



# BUILT WITH PASSION FOR THE PROFESSION

*THE WORKER IS KING*







# THE WORKER IS KING

Our slogan has its origins in the rich past of GKB. At the time, our work merely revolved around the man in the field. Mainly to chop brushwood and to cut reed and rushes. It was tough work, that was done by hand. The best equipment that was available could make a difference. Just as diligent care for your employees. Our grandfathers and founders of GKB, Jan and Pieter-Arie Kraaijeveld, were immediately aware of this in 1946.

Two generations later, their interpretation of being a good employer resounds through every department of the GKB Group. Our corporate culture is characterised by a strong family relationship. GKB Machines does not only go the extra mile for their own employees. At GKB Machines we place high value on final user of the machines from GKB.

At GKB Machines we do not make a fuss over our secret. On the contrary, we prefer to share our secret with you. Primarily, since we are proud of the way we develop and innovate our business. We do not develop from drawing board, we develop from the experience gain in the field. That is the place where the ideas that GKB Machines implements originate from. The result are the machines that every worker would like to work with. The Worker is King!

DISCOVER THE SECRET  
OF A GKB MACHINE

# BORN IN THE FIELD

**GKB Machines was formed in 1985 as a development division of the GKB Group. The first product that we developed was the frontrunner of the fraise mowing machine that currently enjoys worldwide appreciation. The revolutionary idea of the erstwhile superintendent of the municipality of Rotterdam. His idea was to remove the surface layer of a sports pitch, GKB Machines developed the machine that brought this idea to life.**

In the period between 1986 and 1998 we developed an entire line of machines on behalf of the maintenance of natural turf. Today, these machines are recognized as an essential element of the contemporary concept of field management. In our hands, this concept evolved towards the best method to remove *Poa annua* and additional unwanted surface matter. As a consequence, our machines became a core concept with field managers and superintendents; not just in the Netherlands but around the world. We are still extremely proud of this accomplishment.

Since 2006 the proven fraise mowing machines leave our manufacturing facility under the GKB name. We have changed the colours of our machine into our combination of orange and blue, in addition we have also changed the name of the machine into Combinator. We owe a lot to this machine. Nonetheless, we owe the people in the field a lot more; these people inspire us day in, day out to improve our current machines and develop innovative ideas and machines.





THE CONCEPT OF A WORKER  
EVOLVED IN OUR HANDS  
TOWARDS THE BEST SOLUTION  
AGAINST POA ANNUA.





**GKB**

IT DOES NOT ONLY NEED TO WORK, IT SHOULD  
WITHSTAND ROUGH WORKING CONDITIONS

*THE WORKER IS KING*













# DEVELOPED FROM THE POINT OF VIEW OF THE WORKER

Every product that is developed and manufactured by GKB Machines emerge from a specific demand. From a problem of a field manager that is looking for a solution. Or even when you already have a solution and you are looking for a partner to help realise your idea. We aspire to develop machines that meet the exact expectations and demands of the customer. Therefore, we do not back down from a challenge and we are interested to discuss your ideas.

Our strength is that we have the ability to translate your ideas and insights into practice. This is partially a matter of experience, nevertheless, also a great deal of common sense. We are determined to help you out. In order to find the solution, we prefer to think logically and never lose focus on the demands of our customer. Therefore, we value the fact that we are still working with the tractor and the machines as well. As a result, we are able to identify ourselves with our customers and the problems they might encounter.

We know what makes or breaks a machine, from our experience as a contractor and the feedback from all our customers. Quality and reliability characterise the machines from GKB. As a result of their robust design, they are able to handle harsh working conditions. Consequently, the man in the field can operate effectively, under all circumstances. Year after year.

DO NOT HESITATE TO SCHEDULE  
AN APPOINTMENT TO VISIT OUR  
FACTORY.

## COMBINATOR

Are you confronted with weed grasses, a build-up of black layer and organic matter or is the surface of the sport pitch not even? Do you want to keep your sport pitches in excellent condition? The Combinator will provide you the ultimate solution.

With the Combinator you are in possession of a multifunctional fraise mowing machine. You can use the CombiRotor® with three types of blades or chisels. In order to fraise mow the surface layer of your natural grass sport pitch, you are required to assemble the "L-shaped" fraising blades. When you replace your fraising blades with special hybrid chisels, you are enabled to fraise mow the natural grass and surface layer of a hybrid-grass pitch, without damaging the remaining synthetic fibers on the pitch.

The 'hold down plate' has been developed specifically for the non-stitched hybrid fields. The 'hold down plate' ensures that the hybrid carpet stays on its place, while at the same time 8mm material is removed on every 25mm. By making several work passes and combine this with the Renovator, you can also remove these hybrid fields from unwanted organic material in the top layer

You can directly transport the removed infill material by means of conveyer belts. We have provided the conveyer belts with unique conductors, consequently the conveyer belts will not yield to heavy loads. By means of the patented pendulum system of the conveyer rollers, you can easily control the working depth of the Combinator.







### Specifications

Type	Working width	Working depth	Dimensions (LxWxH)	Weight	Power requirement
CB120	120 cm	0 - 5 cm	125 x 290 x 120 cm	600 kg	35 - 45 hp
CB160	160 cm	0 - 5 cm	160 x 355 x 150 cm	900 kg	40 - 70 hp
CB200	200 cm	0 - 5 cm	170 x 440 x 160 cm	1100 kg	65 - 95 hp
CB240	240 cm	0 - 5 cm	180 x 520 x 180 cm	1400 kg	90 - 110 hp





## COMBISEEDER

Are you looking for a fast and efficient way to seed or overseed your golf course or sports pitch? With the Combiseeder we offer you both solutions, as well as the possibility to seed multiple types of grass.

The Combiseeder has two spiked rollers, that open up the soil and accurately spread seed across the full width of the machine, in and around the holes. Two drag brushes incorporate the seed into the holes. This method results in minimal surface disruption. The Combiseeder is also uniquely equipped with two water tanks that allow you to ballast the machine, to aid spike penetration on harder surfaces.

The seed dosing system gives you the opportunity to accurately divide the amount of seed on the soil. It is possible to seed from 3 up to 50 grams per square meter. Using the lever behind the seed hopper you can adjust the opening for the seed dosing.

The conical spike rollers produce 1500 holes per square meter, opening up the surface, consequently, the seed falls behind the first roller. The spike rings are loosely mounted on a rotor tube so they can move separately, enabling you to make turns without damaging the grass. Behind the rollers, the two brushes sweep seed and topdressing, with the first brush being adjustable for pressure and the second following the contours.







### Specifications

Type	Working width	Acurate distribution seed	Capacity seed hopper	Dimensions (LxWxH)	Weight	Power requirement
CS120	120 cm	3 - 50 gms / m <sup>2</sup>	150 liter	140 x 130 x 100 cm	500 kg	> 35 hp
CS160	160 cm	3 - 50 gms / m <sup>2</sup>	200 liter	140 x 170 x 100 cm	660 kg	> 45 hp
CS200	200 cm	3 - 50 gms / m <sup>2</sup>	250 liter	140 x 210 x 100 cm	830 kg	> 55 hp
CS240	240 cm	3 - 50 gms / m <sup>2</sup>	300 liter	140 x 250 x 100 cm	990 kg	> 65 hp





## ECODRESSER

Do you desire to dress your natural grass sports pitches in a sustainable cost effective method? Does your sports pitch need more aeration? In the beginning of the 1990s, we and the Council of Rotterdam developed the predecessor of the Ecodresser. The purchase and spread of dressing is no longer necessary. The Ecodresser will extract the desired dressing soil from the existing upper layer. Since you are using the dressing soil from your own sports pitch, the supply and cost of bringing in dressing is reduced.

With the Ecodresser you are in possession of the ultimate machine for the maintenance of your sports pitches or golf courses. In just one operation, multiple operations are combined. The turf is intensively aerated (20 cm deep) by means of the combination of cutting discs, coulters and fixed tines. At the same time the dressing is applied to the upper layer the sub layer is aerated. You can level imperfections in your pitch by carrying the recycled dressing on the conveyer belt, following you can scatter it on the desired place. Consequently, this will create excellent seeding conditions. As a result, this will improve the drainage conditions and enhance and develop the rooting.

The Ecodresser is equipped with a cutting roller that is ensuring minimal operating damage to the turf. The adjustable cutting blade rotors extract the soil from the upper layer, the heavy-duty rotor is protected with slipping clutches on each blade flange. The coulters, which ensure the aeration of the upper layer, are spring-loaded. This in order to prevent damage from stones in the pitch. There is an option to equip the Ecodresser with a stone screen and collecting tray, in this way you are able to create a homogeneous upper layer.



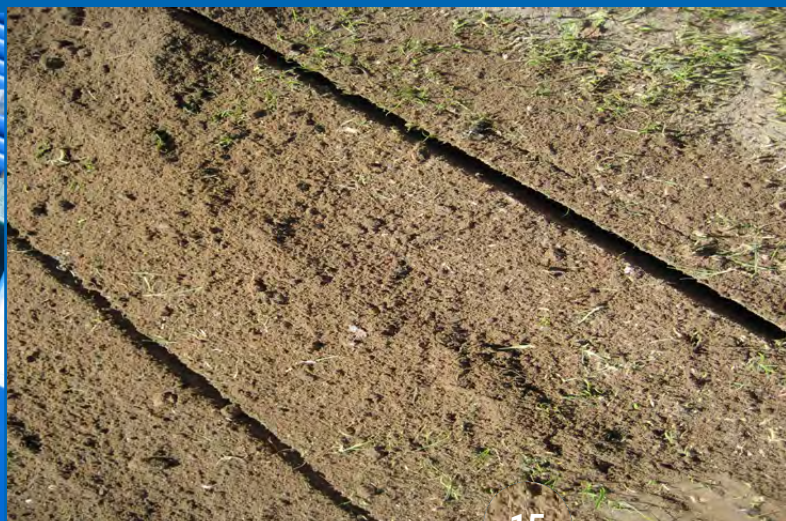




You can level imperfections in your pitch by carrying the recycled dressing soil on the conveyer belt, following you can scatter it on the desired area of the pitch.

#### Specifications

Type	Working width	Working dept	Dimensions (LxWxH)	Weight	Power requirement
ED130	130 cm	0 - 20 cm	170 x 160 x 100 cm	600 kg	30 - 50 hp + creeper gear
ED160	185 cm	0 - 20 cm	245 x 220 x 135 cm	900 kg	65 - 95 hp + creeper gear
ED200	220 cm	0 - 20 cm	245 x 250 x 135 cm	1450 kg	80 - 110 hp + creeper gear
ED240	250 cm	0 - 20 cm	260 x 280 x 135 cm	1650 kg	90 - 120 hp + creeper gear





## VSTRONG

Are you looking for the best available method to deal with weed (bluegrass, moss etc.) or an oily upper layer? Do you want to preserve your sports pitch in excellent condition? The Vstrong is capable of doing all this.

We produce our Vstrong scarifying machine in the same innovative manner as our GKB Combinator, the predecessor of which we and the Council of Rotterdam developed at the end of the 1990's. The method employed of milling the upper turf layer is still in worldwide practice today. With this machine, we not only improve on the already proven technology but also the operating speed (to 12 km/h) and the reliability of the machine is what a professional like you demands. If you are thinking of chemical-free weed management and minimization of waste flows, then you should think of the Vstrong.

Only you know what your sports pitches need. With the Vstrong you are in possession of a robust and reliable scarifying machine. The CombiRotor® is the beating heart of the machine with its generically developed 3 mm carbide scarifying blades. The blades are rigidly attached to the rotor by means of the Quick-Lock® system and in this way you are able to easily attain an operating depth of 5 cm. In combination with the reversed rotation direction, it is guaranteed the Vstrong will never miss a single inch. If you prefer blades of 2 or 4 mm, you have that option. You can also alter the centre-to-centre distance of the scarifying blades.

After the scarified material has dried, you can load or remove the material. Why do we suggest you let the scarified material dry first? Primarily, since every machine that we develop is used by our own green contractor division, we find removing waste material is an expense, therefore, we want as little waste material as possible. Besides, it is a waste of nutrients for the turf if you immediately remove the scarified material.







Because of our patented roller pendulum system you are easily in control of the operating depth. As a unique bonus, we have provided the scarifying machine with a hydraulic adjustable slide. This is ideal when you are required to scarify near the edges and corners of a pitch. Consequently, swiping and cleaning of soiled advertising boards and pathways are history.

#### Specifications

Type	Working width	Working dept	Dimensions (LxWxH)	Weight	Power requirement
VS120	120 cm	0-4 cm	140 x 165 x 100 cm	350 kg	> 40 hp
VS160	160 cm	0-4 cm	160 x 205 x 110 cm	500 kg	> 45 hp
VS200	200 cm	0-4 cm	170 x 245 x 110 cm	750 kg	> 65 hp
VS240	240 cm	0-4 cm	170 x 285 x 110 cm	900 kg	> 90 hp













## SANDSPREADER

Keeping your sports pitch or golf course in prime condition is a tough challenge throughout the entire year. There are multiple reasons for sand filling, during both construction and maintenance. In either case, you want to be able to accurately apply the sand and in varying quantities, depending on the operation. The Sandspreader is the machine to enable you to distribute a great variety of materials, in the appropriate quantities on your sports pitch or golf course.

Furthermore, the Sandspreader is available in four different designs, which range from 1 m<sup>3</sup> to 4 m<sup>3</sup>. The SP100 is suitable for assembling on a turftruck: the ProGator, Truckster or Workman for example. However, it can also be delivered with four pivoting balloon tires. Other designs are provided with four pivoting balloon tires, for the perfect distribution of the weight on your sports pitch or golf course.

With the standard design, you can set the speed of the conveyer belt and the disc spreaders by means of a control unit attached to the Sandspreader. The shape and design of the sand bunker ensures an efficient operation and ensures your clear view along the machine. The sand is transported by means of a conveyer belt to a metering valve, which, optionally, is also available as a hydraulically adjustable metering valve. The double, hydraulically powered, spreading discs are adjustable on multiple points and in this way the Sandspreader enables you to create perfect sand distribution.

The Sandspreader is available with several options. A touchscreen will provide you complete control from the tractor. Moreover, a conveyer belt on the front will enable you to use the Sandspreader as a buffer machine.

Are you making use of the public road? Then you have the optional assembly of hydraulically closeable covers on the top of the machine. Together with the overrun brake and modern LED lighting, the Sandspreader is then ready for use on the public road.







### Specifications

Type	Working width	Capacity seedbunker	Dimensions (LxWxH)	Unladen weight	Power requirement
SP100	variabel	1 m <sup>3</sup> vlak gevuld	190 x 100 x 90 cm	625 kg	> 30 hp
SP230	variabel	2,3 m <sup>3</sup> vlak gevuld	400 x 185 x 160 cm	950 kg	> 40 hp
SP300	variabel	3 m <sup>3</sup> vlak gevuld	470 x 185 x 160 cm	1125 kg	> 50 hp
SP400	variabel	4 m <sup>3</sup> vlak gevuld	470 x 245 x 190 cm	1425 kg	> 65 hp





## TOPDROP

Do you want to provide your sports pitch or golf course with the accurate amount of sand? Do you want to provide your synthetic turf with infill material in a simple way, for instance during the construction? Or do you want to accurately apply another material? With the Topdrop it is possible to accurately apply several materials

The Topdrop is a premium brush dresser, with which you can apply several materials accurately. By means of a conveyer belt, the sand is transported to the mechanical adjustable metering valve. Because the brush is hydraulically powered, and the speed can simply be adjusted, it can ensure that the layer thickness will be accurately determined.

The Topdrop is available in three different designs, from 1.3 m<sup>3</sup> up to 3.3m<sup>3</sup> in size. Every design is provided with four pivoting balloon tires, in order to provide the perfect weight distribution on your sports pitch or golf course.

Are you making use of the public road? Then you should also choose to attach an overrun brake or hydraulically powered brakes. Together with the modern LED lighting, the Topdrop is then ready







Since the brush is hydraulically powered, the quantity of material applied can accurately be determined.

#### Specifications

Type	Working width	Bunker capacity	Dimensions (LxWxH)	Weight	Power requirement
TD130	140 cm	1,3 m <sup>3</sup> vlak gevuld	290 x 170 x 160 cm	775 kg	> 25 hp
TD230	140 cm	2,3 m <sup>3</sup> vlak gevuld	400 x 170 x 160 cm	850 kg	> 35 hp
TD330	200 cm	3,3 m <sup>3</sup> vlak gevuld	400 x 230 x 160 cm	1500 kg	> 50 hp





## STONEBURIER

The creation of the perfect natural grass sports pitch or a unique golf course begins with the appropriate foundations. A homogeneous upper layer can provide the correct starting point for a great grass pitch. Do you encounter areas of your upper layer filled with stones? As a result, does your grass not grow optimally, which results in a low grass density? The Stoneburier provides you with the solution.

The Stoneburier is a premium rotary tiller, in which the strainer behind the rotary tiller ensures that the stones get separated from the finely crumbled ground. It is possible to equip the rotary tiller with two different types of tilling blades. As a result of this operation the stones will be put under the layer of fine, vital soil. The maximum operating depth is 17 cm. The operating depth is simply adjusted by using two spindles on both sides of the machine.

The rear roller presses the milled material and you can fill this roller with water when you want to press the soil more firmly. Optionally the roller can be hydraulically adjusted so you can seamlessly follow your previous operation.

The GKB Stoneburier is essential for the creation of a perfect seeding bed!







### Specifications

Type	Working width	Working dept	Dimensions (LxWxH)	Weight	Power requirement
SB100	100 cm	0 - 15 cm	170 x 130 x 120 cm	450 kg	20 - 40 hp
SB120	120 cm	0 - 17 cm	180 x 160 x 110 cm	500 kg	20 - 40 hp
SB140	140 cm	0 - 17 cm	180 x 180 x 110 cm	600 kg	35 - 50 hp
SB160	160 cm	0 - 17 cm	180 x 200 x 110 cm	700 kg	40 - 55 hp
SB180	180 cm	0 - 17 cm	180 x 220 x 110 cm	800 kg	50 - 70 hp
SB200	200 cm	0 - 17 cm	180 x 250 x 110 cm	885 kg	55 - 75 hp





## SANDFILLER

As a Greenkeeper, you have a primary target; perfection from the Green until the Tee. The SandFiller is able to help you in your aspiration, or aspirations. Every professional that is working on a golf course is aware that scarifying and sand-filling are the perfect combination to attenuate and maintaining and improving of the drainage system. We are combining scarifying, removal and sand-filling in just one operation. Consequently, this working method can be executed by one person. Unlike other working methods which require around 6 people.

As the foundation of the SandFiller we are making use of the clarified principle of the much-praised Combinator. The slitting rotor is provided with carbide scarifying blades and an attachment to the blades that create wind in order to lift the removed material. The blades are available in a thickness of 2, 3 and 4 mm and can be positioned on a centre-to-centre distance of 2, 4, 6 and 8 cm. The scarifying blades are removing the thatch until 4 cm depth. Following the scarified and removed material is immediately distributed to a sideways-tipping container. Consequently, you do not need to brush and dispose the material after the operation. After you have emptied the sideways-tipping container, you can simply refill the container with drainage sand.

The present sand hopper can be filled with dried sand. This pure dried sand is immediately applied to the trench after it has been scarified, by means of a broad hydraulically powered sand conveyer belt and the stainless-steel sand fill unit. As a result of the immediate filling of the scarified trenches, the upper layer can stay stable. After the operation, the fairway will instantly be available for use again.







We are extremely proud of the operation of our SandFiller; proud to contribute to the highest possible qualification of a Green. Green 10/10

#### Specifications

Type	Working width	Bunker capacity	Dimensions (LxBxH)	Weight	Power requirement
SF120	120 cm	120 liter	160 x 180 x 120 cm	620 kg	40 - 60 hp (+ creeper gear)





## DRAINMASTER

Do you have a sports pitch or golf course where surface water is causing an issue? Does your pitch stay wet for too long, due to which you do not achieve the desirable playing hours? Are you not in the possession of the time and budget for a complete renovation? With the Drainmaster we can provide you the ultimate machine to tackle these problems.

The Drainmaster digs two or three trenches of 4 cm width which are positioned perpendicular to the existing underlying drainage. The removed soil will immediately be disposed by means of conveyer belts. Additionally, you can reuse the removed soil as dressing soil.

The trenches are filled with drainage sand to the operating depth of 23 cm during the same operation. The wheels of the Drainmaster will press the drainage sand into the trenches. The sand bunker has been developed in such a way that you can operate the full length of a pitch with one operation, or you can decide to do two operations across the width of the pitch.







The grass will grow on the trenches within a number of weeks. The created drainage network ensures a higher playing capacity. As a result of stronger grass, you will also experience less damage from the activities on the grass. If you combine the operations of our Drainmaster and Combinator you can create an even, well-functioning sports pitch.

#### Specifications

Type	Working width	Working dept	Hopper capacity	Dimensions (LxBxH)	Weight	Power requirement
DM150	150 cm	0 - 23 cm	4 m <sup>3</sup> vlak gevuld	450 x 260 x 260 cm	3300 kg	> 120hp creeper gear





## SANDMOVER

Are you looking for an efficient way to install a sports pitch? Do you want to apply several different layers? Or do you want to fill your drainage trenches? Within the GKB Group we regularly encounter similar challenges when we need to install sports pitches. This has been the primary reason for us to develop the Sandmover, originally in 1986. After continuous modifications, we completely redeveloped the machine in 2012 and today's Sandmover is produced in our brand-new, energy neutral industrial plant.

The Sandmover is the machine you need to apply a layer of sand, lava, split or gravel to your pitch. Moreover, this machine is suitable for filling drainage trenches using the optional, hydraulically adjustable conveyor belt. In the sand bunker, there are two subsoilers positioned to consistently transport the sand to the sand distribution roller. The thickness of the layer that must be applied can easily be installed mechanically, ranging between 2 and 10 cm. Depending on the desired operating width, 1.8 metre or 2.5 metre, the sand bunker can contain 5 m<sup>3</sup> or 6 m<sup>3</sup>.

In the basic design, the Sandmover is an uncomplicated, robust machine on which you, as a contractor, can rely on. We have deliberately chosen to develop the foundation of the machine without hydraulic power requirements or electrical systems, consequently increasing the







The Sandmover rests on four broad balloon tyres, to minimize the risk of possible damage on the pitch. Optionally, you can choose a design in which the machine will rest on radial balloon tires and we can provide the outer wheels with hydraulic brakes. Additionally, you have the option of selecting a trench filler and conveyor belt.

The Sandmover will enable you to accurately prepare the all-important foundations in the construction of the perfect sports pitch.

Specifications:

Type	Working width	Bunker capacity	Dimensions (LxBxH)	Weight	Power requirement
SM180	180 cm	5 m <sup>3</sup> vlak gevuld	375 x 250 x 230 cm	2550 kg	85 - 110 hp
SM250	250 cm	6 m <sup>3</sup> vlak gevuld	375 x 275 x 230 cm	2750 kg	85 - 120 hp





## TOPAIR

As a field manager, your daily activities are focused on maintaining the sports pitch in excellent condition. Since natural grass is not capable to grow without oxygen, the aeration of the upper layer is a necessity. At the same time, you want to have a leveled sports pitch and recover the pitch to excellent condition. With the Topair you are in possession of the ideal machine to combine all these operations.

We have developed the Topair from the desire and ambition to make sports pitch maintenance sustainable. As a family-owned company we think sustainable entrepreneurship and management is extremely important, since we want to pass on a sustainable company to our children. To prove that we do not just stick to words, we are producing the Topair energy neutral in the most sustainable industrial site of the Netherlands.

With the Topair you are in possession of a robust and reliable machine. De Evolvente® blades are developed by GKB in a such a way, that it minimizes the prying effect in the upper layer, so that the upper layer will stay plain. Furthermore, the specific shape and design ensures that there is minimal friction between the blades and the pitch, which will reduce the power usage. The operating speed is thereby around 10 km/h. De maximum operating depth is 16 cm, this can easily be read from the mobile measuring rod.

Within the similar operation there is also a possibility to level out the sports pitch. The pressure roller is hydraulically adjustable, this allows you to aerate and level the pitch or to execute the operations separately. In addition, you are also able to fill the pressure roller with water.







Finally, it is also possible to combat against white grubs when you assemble cutting blades instead of the Evolvente® blades. The combination of operations contributes to the reduction of the CO2 emission and the process of chemical free management of your sports pitch.

#### Specifications

Type	Working width	Working dept	Dimensions (LxBxH)	Weight	Power requirement
TA120	120 cm	0 - 16 cm	160 x 140 x 100 cm	520 kg + 180 kg water	> 30 hp
TA160	160 cm	0 - 16 cm	160 x 180 x 100 cm	650 kg + 240 kg water	> 40 hp
TA200	200 cm	0 - 16 cm	160 x 220 x 100 cm	760 kg + 300 kg water	> 50 hp
TA240	240 cm	0 - 16 cm	160 x 260 x 100 cm	870 kg + 360 kg water	> 60 hp







## DRAGFRAME

Have you just finished renovating your natural grass or hybrid sports pitch? Do you immediately want to level the dressing soil or sand, that makes imperfections in your pitch? Do you want to provide your sports pitch with the finishing touch after the operation? Than the GKB Dragframe is the perfect tool for you.

After the tillage, for instance with the Ecodresser, the pitch will be levelled perfectly by the Dragframe. Optionally we can provide the Dragframe with welded mesh panels, so that you can also use the Dragframe on sand. Subsequently, you are in position to work effective and efficient on several surfaces.

The Dragframe is provided with two folding side decks, which broaden the operating width to 4 m and that can be folded away by an optional hydraulic system. The spiral shaped bars of the Dragframe are developed in such a way that they ensure an even result of your operation.

### Specifications

Type	Working width	Dimensions (LxBxH)	Weight	Power requirement
SR400	400 cm	140 x 410 x 130 cm	200 kg	30 - 50 hp







## CULTIROL

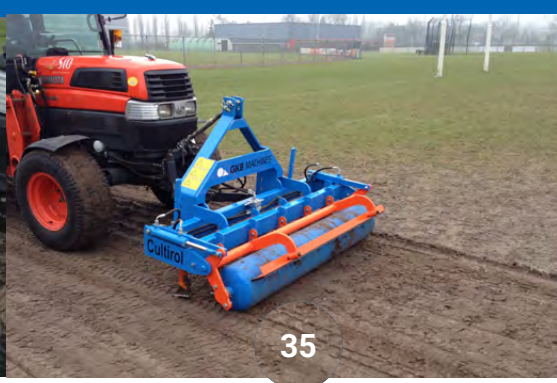
We imagine you are familiar with this problem; heavily compacted, bare goal areas where the grass is not able to grow anymore and where the water stays on the pitch. This area is difficult to keep in top condition without very intensive maintenance activities. Do you want to give this area of the pitch the appearance that it deserves? Then we can provide you with the solution.

At GKB we have a machine developing and production division, as well as our contractor division, which consists of around 150 employees who test and work with our products. Just like you, we prefer to operate as quickly and efficiently as possible. With our Cultitrol you can combine two operations in one, breaking and smoothing the compacted soil.

The Cultitrol can be mounted on the front of your tractor. As you drive forward the mole ploughs will slide into the soil to a depth of 20 cm. Consequently, the heavily compacted soil layers will be broken and mixed. If you drive backwards during the same operation, you can level the soil with the pressure roller. With this operation, you have created a good foundation for overseeding. The goal area will have the appearance and feel it deserves in no time. Of course, you can use the Cultitrol on every area of your natural grass pitch!

### Specifications

Type	Working width	Working dept	Dimensions (LxBxH)	Weight	Power requirement
CR150	150 cm	5 - 20 cm	100 x 160 x 100 cm	285 kg	> 30 hp
CR200	200 cm	5 - 20 cm	100 x 210 x 100 cm	320 kg	> 30 hp





## AERATOR

Compacted synthetic turf pitches are a thorn in the side of the field managers. Synthetic turf pitches are very sensitive to compaction due to intensive usage and contamination. Compaction of the fiber/infill system will lead to compacted pitches and the damping effect of the system will be lost. An additional disadvantage is that the grip of the sport shoes will be reduced, eventually this will cause injuries.

Often, compacted pitches are processed with a brush or tines. However, this is just a quick fix, because you're only decompacting a few millimeters of the upper layer. Nevertheless, the core problem of the compacted field is until the bottom of the fiber.

Decompaction of the entire synthetic turf system can be done with the Aerator. We have equipped the Aerator with rollers that are geared with metal teeth/spikes, these spiked rollers are linked together with a drive chain. As a result of this spiked roller are able to transfer a slight prying effect. Consequently, the compacted pitch will be opened and the technical characteristics from the bottom to the top are returned. The pitch will feel like brand new!

Furthermore, it can also occur that you want to remove the infill material from your pitch. When you decompact your pitch first, you will get your job done a lot faster.

Our decompaction principle has been developed in 2000 together with Desso Sport Systems. Where a regular beam with steel teeth can cause some type of wear by splitting the fiber tips. The possibility of wear with the Aerator is absent. Carbide teeth and synthetic turf pitches might not sound like the best combination at first sight. Nevertheless, because of the slight prying effect (instead of the "scratches" across the pitch from the tines), the Aerator will not damage the fibers.







Because we are contractors as well as machine manufacturers we provide you a “full depth” decompaction machine, with which you can reach an operating speed of 10 km/h. Furthermore, you do not need to stop at the end of a pitch; the Aerator will go where you will go, without shifting the pitch. We can deliver the Aerator in three different types, for further information please regard the product sheets

#### Specifications

Type	Working width	Working dept	Dimensions (LxBxH)	Weight	Power requirement
AR100	100 cm	0 - 3,5 cm	175 x 150 x 50 cm	200 kg (exclusief watertank)	10 - 15 hp
AR150	150 cm	0 - 3,5 cm	110 x 170 x 90 cm	450 kg (exclusief metalen platen)	20 - 40 hp
AR200	200 cm	0 - 3,5 cm	110 x 220 x 90 cm	530 kg (exclusief metalen platen)	30 - 50 hp





## QUICK-CLEAN

Maintenance of synthetic turf, playability and extracting particulates. These are several subjects that frequently pass under review, when it concerns the maintenance of different types of synthetic turf pitches. This is not surprising. A synthetic turf pitch consists of an intelligent system, where the suppliers and contractors adjust the technical characteristics of the pitch to wishes and demands from the sport associations and athletes in the best possible way. With hockey, the pitch characteristics will mainly respond to the ability of a ball to roll and the grip that the athletes experience. Moreover, with football a requirement will be that a sliding tackle must have minimal impact on the fitness of a team.

The Quick-Clean has been developed with 4 requirements in our minds: the quality of the operation after the cleaning, high operating speed, reliability and the price of these requirements must be competitive with the market. Since we are contractors ourselves, as well as being developers of machines, we think that the last three requirements are as important as the first one.

Our synthetic turf cleaner has a straightforward and simple operational principle. Within two minutes the machine is hitched and you can start your operation. Because of the high operating speed (max. 5 km/h) you can finish your operation quickly and effectively. The cleaner operates as follows. The synthetic turf brush will brush the infill material with all the contamination that it is containing and will cast it on a vibrating screen. The coarse dirt will be moved to the collection container, dust and other light-weight dirt will be absorbed by a suction unit with a dust bag. The content of the collection container can be emptied in a regular waste container, the full dust bag can be disposed and replaced.

You can install the operating depth by means of turning in or out the two adjustable front wheels. The rubber wheels ensure that the Quick-Clean will softly roll across the synthetic turf pitch. Depending on the cleaning of the pitch, you attach one of the three types of screens (rough to fine). These are easily changed on site with no additional tools. Since we very much support quality, the entire design and execution of the driving mechanism is robust.







The synthetic turf brush will brush the infill material with all the contamination that it is containing and will cast it on a vibrating screen. Depending on the type of pitch that you are cleaning, you attach one of the three types of screens (rough to fine). The coarse dirt will be moved to the collection container, dust and other lightweight dirt will be absorbed by a suction unit with a dust bag.

We know for a fact that you will be satisfied, as we are a contractor as well.

#### Specifications

Type	Working width	Working dept	Dimensions (LxBxH)	Weight	Power requirement
QC120	120 cm	0 - 3 cm	160 x 180 x 90 cm	390 kg	> 30 hp
QC150	150 cm	0 - 3 cm	160 x 180 x 90 cm	465 kg	> 35 hp
QC180	180 cm	0 - 3 cm	160 x 200 x 90 cm	550 kg	> 40 hp







## RENOVATOR

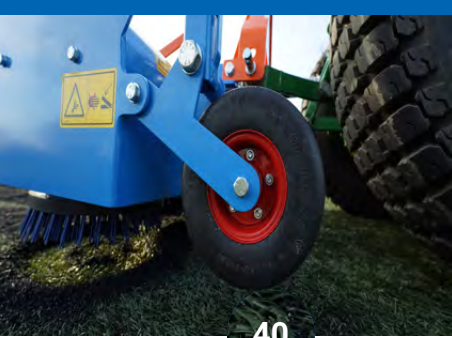
Do you encounter any problems with a compacted synthetic turf pitch? Is the compacted infill layer responsible for a reduced water permeability? Together with the Renovator we are able to provide you the solution.

Together with the Renovator you are in possession of a robust and reliable synthetic turf maintenance machine. Five rotating brushes form the foundation of the machine. Because the brushes hoke in each other, you will not miss a single inch when you are operating on your pitch. The infill material will be situated on the pitch after the operation. Following you can use the Quick-Brush to brush in the infill. Furthermore, it is also possible to use the GKB Infill Remover to dispose the material.

You are able to adjust the operating depth by turning in or out the two adjustable legs. The rubber wheels ensure that the Renovator will softly roll across the synthetic turf pitch. The machine is powered by a power-take off shaft (PTO). Since we are an advocate of soundness, the entire powering system is executed in a robust manner.

### Specifications

Type	Working width	Working dept	Dimensions (LxBxH)	Weight	Power requirement
RV160	160 cm	0 - 5 cm	90 x 180 x 110 cm	240 kg	30 - 45 hp
RV200	200 cm	0 - 5 cm	90 x 180 x 110 cm	300 kg	40 - 55 hp



40





## ROTOBRUSH

Brushing the edges of synthetic turf pitches is important. In general, the most persistent contamination is around the edges, primarily in the form of moss and algae settlements. All this contamination can generate dangerous, slippery situations for the athletes. Besides which, the dirty edges impair the appearance of your pitch. You don't want to give moss and algae a chance to take hold.

If there are dirty green edges or the field lines are becoming less visible, regular cleaning and brushing may not be sufficient. In order to restore the synthetic sports pitch's correct technical characteristics, and the authentic appearance, we recommend you use a Rotobrush.

The Rotobrush will enable you to brush deeper and more effectively where necessary. The rotating brush disc is provided with extra rigid bristles which are pressed into the synthetic turf. Where the functioning of normal brushing and cleaning stops, the Rotobrush will continue! You can also change the brush disc for an axially rotating brush with a collection container. The cleaning of the field lines has never been this easy.

Besides a Rotobrush with an adjustable arm and collection container, there is also a Rotobrush available with extra operating width. The RB120 will provide you an operating width of 120 cm. The two brushes are adjustable in such a way that the entire width will be brushed during the operation, without missing an area.

TIP: Besides the application on sports pitches, our contractor division also applies the Rotobrush to the maintenance of several playgrounds where the synthetic turf is used for fall cushioning. The cleaning of playgrounds can be done in no time.

### Specifications

Type	Working width	Working dept	Dimensions (LxBxH)	Weight	Power requirement
RB40	40 cm	0 - 4 cm	70 x 150 x 70 cm	65 kg	15 - 35 hp
RB60	60 cm	0 - 4 cm	70 x 150 x 70 cm	65 kg	15 - 35 hp
RB120	120 cm	0 - 4 cm	90 x 120 x 80 cm	85 kg	20 - 45 hp







## INFILL REMOVER

Do you want to remove SBR rubber from your artificial sport pitches? Doesn't meet the pitches the sport technical requirements? Or you want to remove the materials of the artificial pitch separately? The Infill Remover provide you the ultimate solution.

You can change the working depth with the two spindles at the front of the machine. The patented pendulum system will change automatically both rollers, which results in an even work result.

The Infill Remover works with an unique brush, the brush is adjustable in stiffness. On this way it is possible to work on both new pitches as well on heavily compacted pitches. Dependent on the pitch, it is possible to remove in one operation the complete layer of infill.

### Specifications

Type	Working width	Working dept	Dimensions (LxBxH)	Weight	Power requirement
IR120	120 cm	0 - 5 cm	125 x 290 x 120 cm	600 kg	35 - 45 hp
IR160	160 cm	0 - 5 cm	160 x 400 x 180 cm	950 kg	40 - 70 hp
IR200	200 cm	0 - 5 cm	170 x 440 x 160 cm	1100 kg	65 - 95 hp
IR240	240 cm	0 - 5 cm	180 x 520 x 180 cm	1400 kg	90 - 110 hp



42







## INFILLER

Are you looking for a way to infill in the construction of your sports field? Do you want to sprinkle sand on your sports field? Or do you have other material such as cork that you want to apply accurately? With the Infiller you can perform these different actions.

The infill material can be applied in two directions. This ensures that multiple types of infill can be applied, such as sand, SBR rubber, TPE rubber and cork. To be able to drive in both directions of work, the driver's seat is rotatable. The bunker mounted on top of the chassis can be enlarged by aluminum extensions. The bunker is increased by these extensions from 1.06 m<sup>3</sup> to 3 m<sup>3</sup>. By means of the dosing valve of the Infiller it can be determined how much Infill material is sprinkled. This valve is hydraulically and manually operable.

### Specifications:

Type	Working width	Bunker capacity	Dimensions (LxBxH)	Weight	Power requirement
IF150	160 cm	3 m <sup>3</sup>	270 x 176 x 220 cm	1440 kg	> 18 hp







## BRUSH

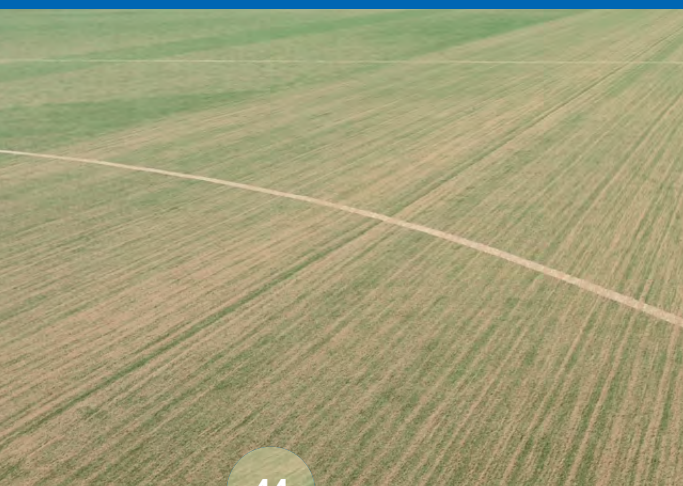
'Efficiency', besides quality is one of the most important terms regarding the construction and maintenance of sports pitches. Based on this philosophy, we have built our largest synthetic turf brush. The primary aim is that you will be able to do your work quickly, properly and efficiently.

Essentially, the Brush comprises a 2 metre broad frame, into which we have assembled rigid brushes. The positioning and rigidity of the brushes, has been developed in such a refined manner so that the infill is evenly distributed across the pitch, in the most efficient way. Moreover, the rejuvenation of the fibres is going to excel your expectations.

We deliver the brush with two extra side-decks as standard. Accordingly, you are able to broaden the operating width to as much as 4 metres. Consequently, you can move to the next pitch twice as fast. Because you can hydraulically fold the side-decks, you can also quickly go from one pitch to another. Have you finished your operation? Then you can put the Brush in the park position to protect your brushes, ready for the next challenge.

### Specifications

Type	Working width	Dimensions (LxBxH)	Weight	Power requirement
BR200	200 cm	120 x 200 x 100 cm	190 kg	20 - 45 hp
BR400	400 cm	120 x 400 x 100 cm	400 kg	35 - 50 hp







## QUICK-BRUSH

There are many different synthetic turf pitches available on the market; football pitches, korfbal pitches, tennis courts, hockey pitches and more. All these pitches demand their own, specific, type of maintenance. With the Quick-Brush you have a modular brush which you can adjust to each specific task. You can choose between a rake, brush, double brush, rubber finishing rag, and you can adjust the height. We can equip the Quick-Brush you have chosen with a three-point linkage (tractor) or a wheel set for towing by another type of vehicle.

The Quick-Brush will also accommodate you with the construction of synthetic turf pitches. With the 'flip-over tool' on the Quick-Brush infill material can be easily added to new fields and it will always orientate itself in the operating direction.

### Specifications

Type	Working width	Dimensions (LxBxH)	Weight	Power requirement
QB200 Basis 3-punt	200 cm	60 x 200 x 80 cm	60 kg	25 - 45 hp







## T-BRUSH

Most sports clubs carry out their own daily maintenance of their synthetic turf. We believe this maintenance should be done with quality equipment, in the same way a contractor would do the work. Since with quality, one will produce quality!

The T-Brush is a triangle brush that can be used for the daily maintenance of your synthetic turf pitches. This, our most straightforward brush, has been constructed with a premium steel frame in combination with completely synthetic brushes. These synthetic brushes provide you with a major advantage, since they will not decay due to the effects of water.

Furthermore, we deliver the T-Brush with wheels and a tow chain as standard.

Are you looking for a triangle brush? We can deliver you the most sustainable triangle brush available on the market.

### Specifications

Type	Working width	Working dept	Dimensions (LxBxH)	Weight	Power requirement
TB140	140 cm	0 - 2 cm	120 x 140 x 15 cm	40 kg	> 10 hp
TB180	180 cm	0 - 2 cm	160 x 180 x 15 cm	60 kg	> 15 hp







## TOPFINISH

The 'finishing touch' will determine the appearance of your synthetic turf pitch. With the Topfinish you can drag every type of synthetic turf pitch. During the operation, you are able to spread the infill and remove possible contamination from the mat structure. Result: a good looking synthetic turf pitch of which you can be proud.

When you operate the Topfinish perpendicular to the brushing direction, the infill material is thoroughly brushed in. Contamination in the of cigarette butts, leaves and small branches are removed during the operation with the Topfinish.

The Topfinish is mounted to a towing vehicle by means of a tow chain. After you have finished your operation, you easily roll up and put away the Topfinish. The Topfinish is manufactured of durable materials. Since we only use steel and rubber, we can ensure you that the Topfinish will assist you year after year!

### Specifications

Type	Working width	Dimensions (LxBxH)	Weight	Power requirement
TF200	200 cm	150 x 300 x 10 cm	40 kg	> 15 hp







# THE FUTURE IS KING

**The specialism and the vision of GKB machines have not been unrecognized. Our machines enjoy the admiration and interest from field managers and superintendent all over the world. In order to distribute and offer our machines to you, we closely cooperate with dealers directly in the Netherlands and abroad, including the dealers of robust brands like John Deere. In doing so, our customers are assured that they receive the best service possible.**

GKB Machines is oriented towards the future generations who come after us. Our growth should not be at the expense of the living environment of our children. During the search to the best and most sustainable solution, we dare to look beyond the machine. More important is how we manufacture our machines. That is where we can make a difference!

Since the summer 2016, GKB Machines is situated in a unique office building and manufacturing facility. The building is one of the most sustainable, future-proof and environmental friendly buildings in the Netherlands. The BREEAM-NL level 5 certification is hereof proof. In addition, we are allowed to carry the NL Greenlabel for the outdoor area.

Due to an almost futuristic energy and power management, we are capable to manufacture our machines entirely energy neutral. In our office, we can even store the body warmth that we emit during the day. With the stored body warmth, the system can keep the building on temperature overnight. Besides, we have also thought about the nature surrounding our building; the animals and plants feel welcomed around our building.

*HAVE YOU BECOME CURIOUS? THE DOOR IS ALWAYS OPEN FOR YOU*





THE FUTURE HAS STARTED AT  
GKB. TODAY IS TOMORROW.





[www.gkbmachines.com](http://www.gkbmachines.com)

*THE WORKER IS KING*