



Product Service

# CERTIFICATE

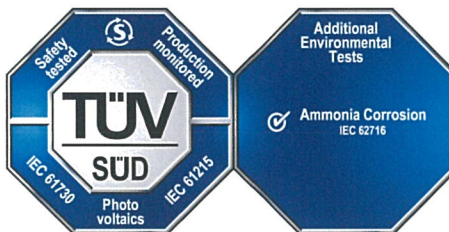
No. Z2 14 09 84700 016

**Holder of Certificate:** **Phono Solar Technology Co., Ltd**

No. 1 Xinghuo Rd.,  
Nanjing Hi-tech Zone,  
210032 Nanjing  
PEOPLE'S REPUBLIC OF CHINA



**Certification Mark:**



**Product:**

**Crystalline Silicon Terrestrial Photovoltaic (PV) Modules  
Mono-Crystalline Silicon Photovoltaic Module**

The product was tested on a voluntary basis and complies with the essential requirements. The certification mark shown above can be affixed on the product. It is not permitted to alter the certification mark in any way. In addition the certification holder must not transfer the certificate to third parties. See also notes overleaf.

**Test report no.:** 704061410904-00

**Valid until:** 2019-09-24

**Date,** 2014-09-29

( Zhulin Zhang )

Page 1 of 2





Product Service

**CERTIFICATE**

**No. Z2 14 09 84700 016**

**Model(s):**

PS280M-24/T, PS285M-24/T, PS290M-24/T, PS295M-24/T,  
 PS300M-24/T, PS305M-24/T, PS310M-24/T, PS315M-24/T,  
 PS320M-24/T, PS325M-24/T, PS330M-24/T, PS335M-24/T,  
 PS340M-24/T, PS255M-22/W, PS260M-22/W, PS265M-22/W,  
 PS270M-22/W, PS275M-22/W, PS280M-22/W, PS285M-22/W,  
 PS290M-22/W, PS295M-22/W, PS300M-22/W, PS305M-22/W,  
 PS310M-22/W, PS215M-20/U, PS220M-20/U, PS225M-20/U,  
 PS230M-20/U, PS235M-20/U, PS240M-20/U, PS245M-20/U,  
 PS250M-20/U, PS255M-20/U, PS260M-20/U, PS265M-20/U,  
 PS270M-20/U, PS275M-20/U, PS280M-20/U, PS195M-18/V,  
 PS200M-18/V, PS205M-18/V, PS210M-18/V, PS215M-18/V,  
 PS220M-18/V, PS225M-18/V, PS230M-18/V, PS235M-18/V,  
 PS240M-18/V, PS245M-18/V, PS250M-18/V, PS255M-18/V,  
 PS130M-12/G, PS135M-12/G, PS140M-12/G, PS145M-12/G,  
 PS150M-12/G, PS155M-12/G, PS160M-12/G, PS165M-12/G,  
 PS170M-12/G, PS170M-24/F, PS175M-24/F, PS180M-24/F,  
 PS185M-24/F, PS190M-24/F, PS195M-24/F, PS200M-24/F,  
 PS205M-24/F, PS210M-24/F.

**Parameters:**

Rated Output Power  
at STC:

280 W, 285 W, 290 W, 295 W,  
 300 W, 305 W, 310 W, 315 W,  
 320 W, 325 W, 330 W, 335 W,  
 340 W, 255 W, 260 W, 265 W,  
 270 W, 275 W, 280 W, 285 W,  
 290 W, 295 W, 300 W, 305 W,  
 310 W, 215 W, 220 W, 225 W,  
 230 W, 235 W, 240 W, 245 W,  
 250 W, 255 W, 260 W, 265 W,  
 270 W, 275 W, 280 W, 195 W,  
 200 W, 205 W, 210 W, 215 W,  
 220 W, 225 W, 230 W, 235 W,  
 240 W, 245 W, 250 W, 255 W,  
 130 W, 135 W, 140 W, 145 W,  
 150 W, 155 W, 160 W, 165 W,  
 170 W, 170 W, 175 W, 180 W,  
 185 W, 190 W, 195 W, 200 W,  
 205 W, 210 W.

Construction:

Framed, with Junction box,  
Cable and Connectors.

Application Class:

Class A

Maximum System Voltage:

1000 V DC

Fire Safety Class:

Class C

**Tested according to:**

IEC 61215:2005  
 IEC 61730-1/A2:2013  
 IEC 61730-2/A1:2011  
 IEC 62716:2013

**Production Facility(ies):**

84700





Product Service

# CERTIFICATE

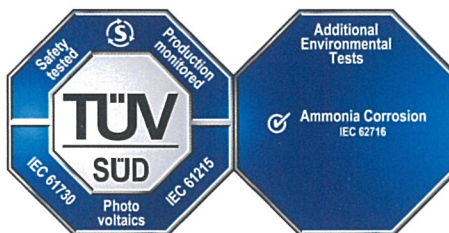
No. Z2 14 09 84700 015

**Holder of Certificate:** **Phono Solar Technology Co., Ltd**

No. 1 Xinghuo Rd.,  
Nanjing Hi-tech Zone,  
210032 Nanjing  
PEOPLE'S REPUBLIC OF CHINA



**Certification Mark:**



**Product:**

**Crystalline Silicon Terrestrial Photovoltaic (PV) Modules  
Poly-Crystalline Silicon Photovoltaic Module**

The product was tested on a voluntary basis and complies with the essential requirements. The certification mark shown above can be affixed on the product. It is not permitted to alter the certification mark in any way. In addition the certification holder must not transfer the certificate to third parties. See also notes overleaf.

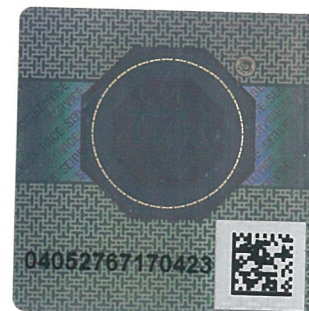
**Test report no.:** 704061410906-00

**Valid until:** 2019-09-24

**Date,** 2014-09-29

( Zhulin Zhang )

Page 1 of 2





**CERTIFICATE**

**No. Z2 14 09 84700 015**

**Model(s):**

PS275P-24/T, PS280P-24/T, PS285P-24/T, PS290P-24/T,  
 PS295P-24/T, PS300P-24/T, PS305P-24/T, PS310P-24/T,  
 PS315P-24/T, PS320P-24/T, PS325P-24/T, PS330P-24/T,  
 PS335P-24/T, PS250P-22/W, PS255P-22/W, PS260P-22/W,  
 PS265P-22/W, PS270P-22/W, PS275P-22/W, PS280P-22/W,  
 PS285P-22/W, PS290P-22/W, PS295P-22/W, PS300P-22/W,  
 PS305P-22/W, PS215P-20/U, PS220P-20/U, PS225P-20/U,  
 PS230P-20/U, PS235P-20/U, PS240P-20/U, PS245P-20/U,  
 PS250P-20/U, PS255P-20/U, PS260P-20/U, PS265P-20/U,  
 PS270P-20/U, PS275P-20/U, PS195P-18/V, PS200P-18/V,  
 PS205P-18/V, PS210P-18/V, PS215P-18/V, PS220P-18/V,  
 PS225P-18/V, PS230P-18/V, PS235P-18/V, PS240P-18/V,  
 PS245P-18/V, PS250P-18/V, PS130P-12/G, PS135P-12/G,  
 PS140P-12/G, PS145P-12/G, PS150P-12/G, PS155P-12/G,  
 PS160P-12/G, PS165P-12/G.

**Parameters:**

Rated Output Power  
 at STC:

275 W, 280 W, 285 W, 290 W,  
 295 W, 300 W, 305 W, 310 W,  
 315 W, 320 W, 325 W, 330 W,  
 335 W, 250 W, 255 W, 260 W,  
 265 W, 270 W, 275 W, 280 W,  
 285 W, 290 W, 295 W, 300 W,  
 305 W, 215 W, 220 W, 225 W,  
 230 W, 235 W, 240 W, 245 W,  
 250 W, 255 W, 260 W, 265 W,  
 270 W, 275 W, 195 W, 200 W,  
 205 W, 210 W, 215 W, 220 W,  
 225 W, 230 W, 235 W, 240 W,  
 245 W, 250 W, 130 W, 135 W,  
 140 W, 145 W, 150 W, 155 W,  
 160 W, 165 W.

Construction:

Framed, with Junction box,  
 Cable and Connectors.

Application Class:

Class A

Maximum System Voltage:

1000 V DC

Fire Safety Class:

Class C

**Tested  
 according to:**

IEC 61215:2005  
 IEC 61730-1/A2:2013  
 IEC 61730-2/A1:2011  
 IEC 62716:2013

**Production  
 Facility(ies):**

84700