



S
SECUMAR®

LIFEJACKETS



SPORTS



HAVE A **SAFE** DAY

SECUMAR.COM



WHICH
LIFEJACKET IS
THE RIGHT
ONE FOR ME?

▶ IN ANY CASE SECUMAR HAS THE RIGHT LIFEJACKET FOR YOU!

The number of lifejacket possibilities is as big as the number of areas in which it can be used, but it can't be all things to all people, so the big question is 'Which is the right lifejacket'? The best way to answer this is to ask what it will be used for.



1 WHERE WILL IT BE USED?

Inland, coastal or offshore?
Canoeing, dinghy sailing, keelboat sailing, motor boating or fishing? Each has its own requirements and will determine the decision over which lifejacket to choose.

2 WHAT CLOTHING WILL BE WORN?

Lightweight sailing kit or heavy foul-weather gear determines how much buoyancy the lifejacket must have. Take a look at the buoyancy classes at the next page for further clarity.

► THE FOUR BUOYANCY CLASSES

50 N BUOYANCY AIDS



For regular swimmers near a beach or means of assistance, **not for unconscious persons**.
This is not a lifejacket!

100 N LIFEJACKETS



Inland and protected waters.
Not suitable for unconscious persons.

150 N LIFEJACKETS



For use in all waters and **for unconscious persons unless wearing heavy or waterproof clothing.**

275 N RETTUNGSWESTEN



For use in all waters and **for unconscious persons, especially in heavy conditions and when wearing heavy or waterproof clothing.**

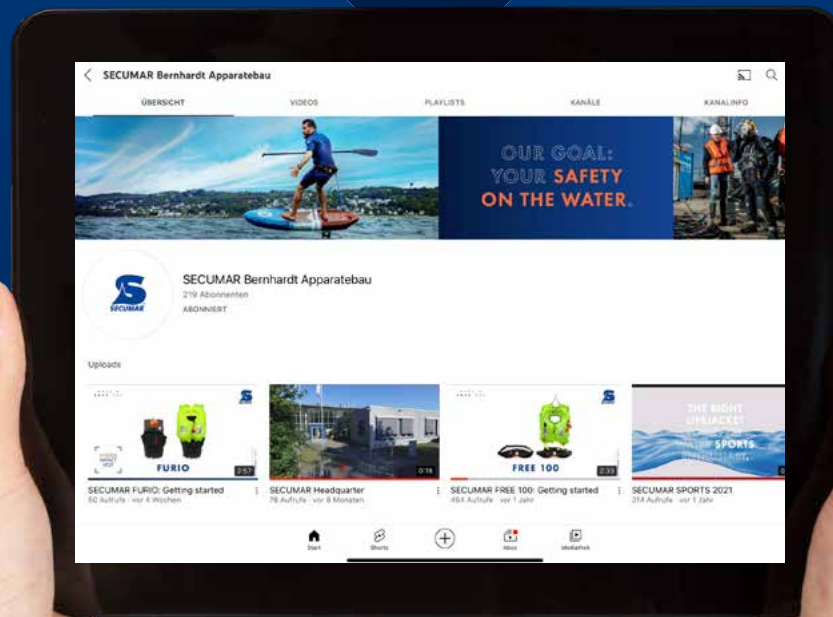
Are you still undecided? Visit our lifejacket advisor
online www.secumar.com/en/lifejacket-advisor

▶ HOW TO RE-PACK YOUR LIFEJACKET

Your lifejacket has successfully inflated and you need help re-packing it?
No problem! On our YouTube® channel you can find instruction videos for re-packing
for all our lifejackets.

Please visit our website or YouTube® channel for further information:

www.youtube.com/BernhardtApparatebau



To the videos

▶ HOW TO BUILD AN INFLATABLE

Padding

Higher wearers comfort.

Inspection Window

Displays the firing mechanism status. Single point 'Green for Go'.

Firing Mechanism

Sensor, when in contact with water, automatically triggers CO₂ inflation, or via manual release.



'Click' Buckle

For easy opening and closing.

Harness

To tether you to the deck.

SECUMAR Service Disc

An inspection sticker indicates the next service date.

THE SELF-SEALING DUO PROTECT BUOYANCY CHAMBER MAKES THE SURVIVAL 275 Duo Protect, MINI and JUNIOR THANKS TO OUR PATENTED SYSTEM THE SAFEST RESCUE EQUIPMENT FOR WATER SPORTS.

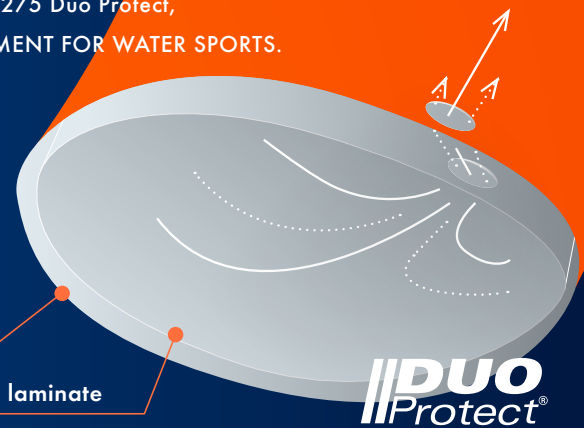
Inside the buoyancy chamber is **another airtight stretch laminate**.

If the outer skin is punctured, **the internal gas pressure will force the inner skin to overlap the hole** and seal the leak.



Outer skin

Inner stretch laminate



SECUMAR LIFEJACKET



Sprayhood

Optional equipment.

Emergency Light

Optional equipment.



Retro-Reflective Strips

For better visibility.

Mouthpiece

For oral inflation and eventual deflation of chamber.

Lifting Becket

For holding alongside or lifting up to 320 kg.

Whistle

To generate attention.



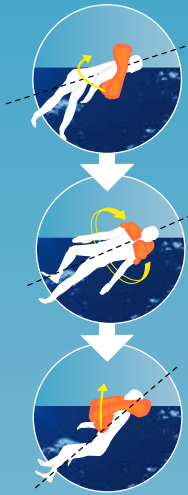
► PLB

Optional equipment;
attached with
a lanyard
and held in a pocket.



► SPRAYHOOD

Protects from spray and
prevents drowning in 'flying
water', keeps head warm.
Optional equipment.



▶ SECUMAR BUOYANCY CHAMBERS

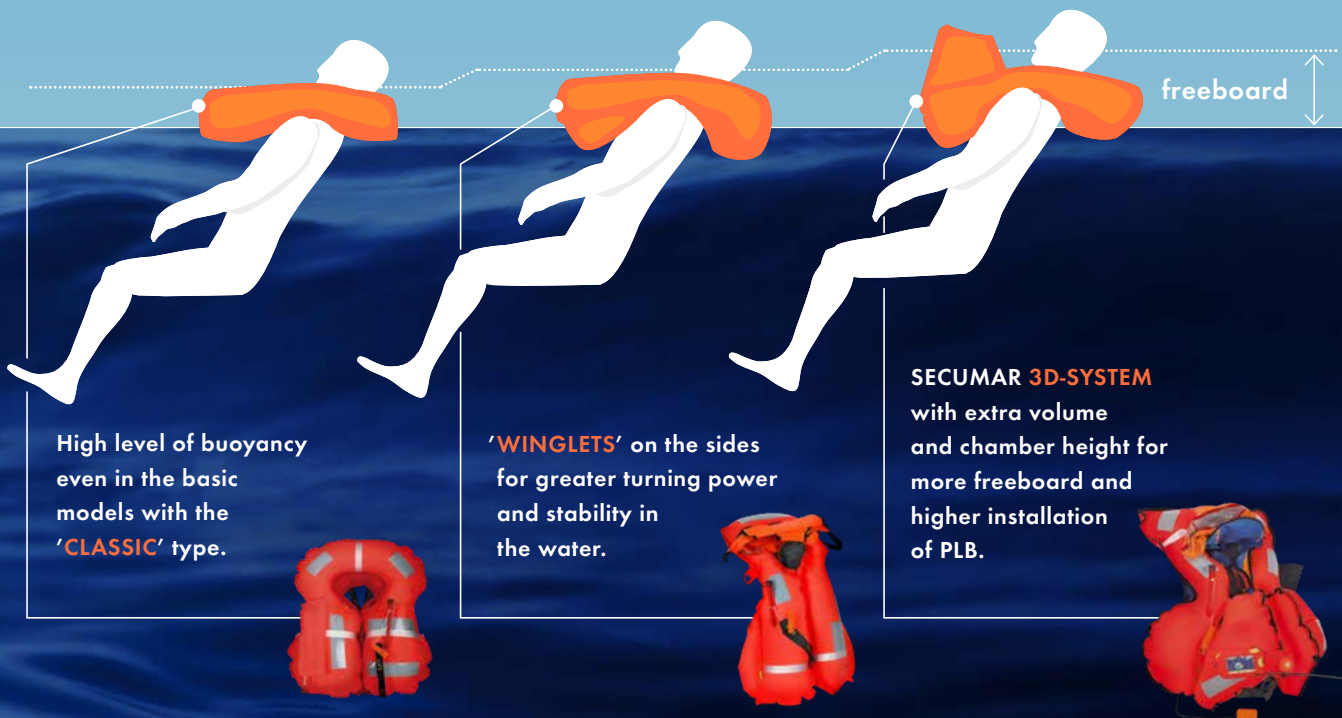
The construction of a buoyancy chamber is decided by its intended performance in water.

The physical distribution of buoyancy should be at the side and behind the head of the lifejacket wearer so they are turned quickly from a potentially deadly position on their front to a stable position on their back with the head supported clear of the water.

CLASSIC

WINGLET

3D



High level of buoyancy even in the basic models with the 'CLASSIC' type.

'WINGLETS' on the sides for greater turning power and stability in the water.

SECUMAR 3D-SYSTEM with extra volume and chamber height for more freeboard and higher installation of PLB.

► SECUMAR FIRING MECHANISMS



The inflator is the heart of the lifejacket. When in contact with water, the small pill of cellulose will disintegrate and will activate the lever mechanism to pierce the CO₂ cylinder, hence inflating the buoyancy chamber. Worst case: a life depends on the functional liability of the inflator.

SECUMATIC 4001 S

Single red/green indicator displays the safety status of the inflator.

Green means:

- The soluble 'pill' is inserted.
 - The CO₂ cylinder is properly screwed in.
 - The manual release cord is properly set.
 - The CO₂ cylinder is full and in order.
- All this can be viewed and checked through the inspection window in the outer cover.

Further advantages:

- Bayonet system allows quick and safe installation of the CO₂ cylinder.



SECUMATIC 3001 S

Three red/green indicators display the safety status of the inflator.

Green means variously:

- The soluble 'pill' is inserted.
- The CO₂ cylinder is properly screwed in.
- The manual release cord is properly set.

Further advantages:

- Unique 'POSITORQUE' screw system ensures secure and 'shakeproof' installation of the CO₂ cylinder.



Also available with **manual override** as option.

PRODUCT OVERVIEW SPORTS



- standard
- optional
- not available

	SCOUT	SURVIVAL 275 Duo Protect	SURVIVAL 275		ARKONA 275	SURVIVAL 220	
P/N	16062	16699	16689 dark blue	16698 black	16376	16696 blue	16690 light grey
Buoyancy chamber type	3D	WINGLET	WINGLET		CLASSIC	WINGLET	
Buoyancy class	275 N	275 N	275 N		275 N	150 N	
Actual buoyancy	290 N	280 N	280 N		280 N	220 N	
Comply to DIN EN ISO	12402-2 and 12401	12402-2 and 12401	12402-2 and 12401		12402-2 and 12401	12402-3 and 12401	
Auto firing mechanism	SECUMATIC 4001S	SECUMATIC 4001S	SECUMATIC 4001S		SECUMATIC 3001S	SECUMATIC 4001S	
CO ₂ -Cylinder (P/N)	60 g Dock (12507)	60 g Dock (12507)	60 g Dock (12507)		56 g (929)	43 g Dock (15239)	
Outer cover closed with	Zip	Zip	Zip		Velcro	Zip	
Integral harness	textile D-Ring	textile D-Ring	textile D-Ring		•	textile D-Ring	
Back section	padded	padded, adjustable	padded, adjustable		Webbing	padded, adjustable	
Sprayhood	GORE®	Polyamid	Polyamid		-	Polyamid	
SOLAS emergency light	•	◦	◦		◦	◦	
Firing mechanism access zip	•	•	•		-	•	
Inspection window	•	•	•		-	•	
Neck area	Softshell	Softshell	Softshell		-	Softshell	
Crutch strap Simple / 2K CLICK 30	2K / ◦	• / ◦	• / ◦		• / ◦	• / ◦	
Integral pocket for PLB	•	•	•		◦	•	
Duo Protect System	-	•	-		-	-	
Hover System	•	-	-		-	-	

INFLATABLE



ARKONA 220	ULTRA 170		ULTRA 170 Harness		SECUFIT	VIVO 100	FURIO	FREE 100
16375	16705 hawaiian	16385 black	16707 hawaiian	16348 black	15732	14224	17214 (60-80 kg) 17215 (70-90 kg) 17216 (80-100 kg) 17217 (90-115 kg)	17164
CLASSIC	CLASSIC		CLASSIC		WINGLET	CLASSIC	CLASSIC	CLASSIC
150 N	150 N		150 N		150 N	100 N	100 N	50 N
220 N	165 N		165 N		160 N	110 N	50N + 110 N	110 N
12402-3 and 12401	12402-3		12402-3 and 12401		12402-3 and -6	12402-4 and -6	12402-4 and -6	12402-5 and -6
SECUMATIC 3001S	SECUMATIC 4001S		SECUMATIC 4001S		SECUMATIC 3001S	SECU 301SM	SECU S31	SECU S31
43g (14344)	32g Dock (11433)		32g Dock (11433)		32g (927)	22g (924)	22g (15866)	22g (15866)
Velcro	Velcro		Velcro		Zip	Velcro	Zip	Velcro
•	-		•		-	-	-	-
Webbing	Webbing		Webbing		padded, adjustable	Webbing	padded	-
-	o		o		-	-	-	-
o	o		o		o	o	o	o
-	-		-		-	-	-	-
-	•		•		-	-	-	-
-	Fleece		Fleece		Softshell	Fleece	-	-
•/o	•/o		•/o		•/o	-/-	-/-	-/-
o	o		o		-	-	-	-
-	-		-		-	-	-	-
-	-		-		-	-	-	-

LIFEJACKETS



KIT FOR KIDS



- standard
- optional
- not available

	MINI	JUNIOR	MIDI	BRAVO	BRAVO PRINT
P/N	15440	15471	16379	see "Body weight / Actual buoyancy"	
Buoyancy chamber type	WINGLET	WINGLET	CLASSIC	-	-
Buoyancy class /comply to	150N/ DIN EN ISO 12402-3 and 12401			100N/ DIN EN ISO 12402-4	
Body weight / Actual buoyancy	15-30 kg / 90 N	20-50 kg / 110 N	20-50kg / 110 N	10-15 kg /30 N P/N 13273	5-10 kg / 30 N P/N 13269
				15-20 kg /40 N P/N 13274	10-15 kg/30 N P/N 13270
				20-30 kg /40 N P/N 13275	15-20 kg/40 N P/N 13271
				30-40 kg /50 N P/N 13276	20-30 kg/40 N P/N 13531
Chest	49 - 72 cm	58 - 82 cm	72 - 90 cm	-	-
Auto firing mechanism / ofixed foam	SECUMATIC 3001S			SECU Foam	SECU Foam Soft
CO ₂ -Cylinder (P/N)	16 g (901)	22 g (925)	22 g (925)	-	-
Whistle	•	•	•	•	•
3M® Retro-reflective strips	300 cm ²	300 cm ²	300 cm ²	100 cm ²	100 cm ²
Integral Harness	•	•	•	-	-
Front closure	CLICK 30	CLICK 30	Metall	Plastic	Plastic
Inspection Window	-	-	-	-	-
Neck area	Micro-Fleece	Micro-Fleece	Fleece	-	-
Back section	Webbing	Webbing	Webbing	Webbing	Webbing
Lifting strop	•	•	•	-	-
SOLAS emergency light	◦	◦	◦	-	-
Crutch strap	•	•	•	double	•
Duo Protect System	•	•	-	-	-



JUMP PRO



JUMP



ECHO



BRAVO



VIVO 50



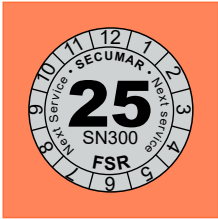
CAMINO

- standard
- optional
- not available

Buoyancy class	50 N	50 N	50 N	100 N	50 N	50 N
comply to	DIN EN ISO 12402-5	DIN EN ISO 12402-5	DIN EN ISO 12402-5	DIN EN ISO 12402-4	DIN EN ISO 12402-5	DIN EN ISO 12402-5
Body weight/ Buoyancy P/N	30-40 kg / 35 N P/N 15196 40-70 kg / 45 N P/N 15197 70-90 kg / 50 N P/N 15198 90-120 kg / 50 N P/N 15199	30-40 kg / 35 N P/N 13263 40-70 kg / 45 N P/N 13264 70-90 kg / 50 N P/N 13265 90-120 kg / 50 N P/N 13266	30-40 kg / 35 N P/N. 11666 40-70 kg / 45 N P/N 11667 70-90 kg / 50 N P/N 11668 90-120 kg / 50 N P/N 11669	40-50 kg / 60 N P/N 11674 50-70 kg / 80 N P/N 11675 70-80 kg / 100 N P/N 11676 80-120 kg / 100 N P/N 11677	> 40 kg / 50 N P/N 14253	30-40 kg / 35 N P/N 16929 40-70 kg / 45 N P/N 16930 70-90 kg / 50 N P/N 16931 90-120 kg / 50 N P/N 16932
Fixed SECU Foam	•	•	•	•	•	SECU Foam Soft
Closure						
... Zip	•	•	•	•	-	•
... Velcro	•	•	-	-	-	-
... Cord	-	•	•	-	-	-
... Plastic buckles	-	-	•	•	-	•
Whistle	-	-	-	•	-	-
3M® Retro-reflective strips	•	•	-	100 cm ²	-	•
Adjustable waist belt	•	•	•	•	•	•
Crutch strap	-	-	-	double	•	-
Front zipped Pocket	•	•	-	-	-	-

FOAM BUOYANCY AIDS

▶ MAINTENANCE AND SERVICE



The **regular inspection** of all equipment that is concerned with the safety of life is essential.

None more, than for lifejackets where the natural ageing process of the materials degrades them causing impairments in their **automatic inflation** and use. This is why your lifejacket should be returned to an authorized service agent or the manufacturer, to be **checked every two years** until the end of its ten year service life.

After a successful service check your lifejacket gets a new **FSR Service Disc** – similar to your car's MOT!

These 10 points
will be checked
every two years
during the
maintenance

- **Visual check for any mechanical damage** (rips, abrasion, porosity etc).
- **16 hr inflation and residual pressure test** with pressure gauge.
- **Water activating the auto inflator** and checking mechanism with specialist tools.
- **Testing manual firing mechanism** with specialist tools.
- **Checking and Testing oral tube and valve for damage**, porosity and air-tightness.
- **Replacing all gaskets.**
- **Replacing firing pill.**
- **Rebuilding, using electronically controlled torque wrench.**
- **Checking seams, webbing and all fastenings.**
- **Checking CO₂ cylinder** for contents und external damage (e.g.: corrosion).



CO₂-CARTRIDGES



PILLS



SECULIFT LWS 25



SECU 17



SECULUX LED II



MANUAL OVERRIDE



DROGUE



ANTI-INVERSION CUSHION



SECULUX L 92



M.O.B. PACK



JUNIOR
SAFETY LANYARD



CLASSIC
SAFETY LANYARD



CRUTCH STRAP 2K CLICK 30

▶ ORIGINAL SECUMAR ACCESSORIES

Detailed information about the ones shown here and about other accessories such as sprayhood, distress transmitter and how to integrate them into your SECUMAR lifejacket can be found at our website.

OUR GOAL: YOUR SAFETY ON THE WATER.

► ABOUT SECUMAR

- Formation of the company
Ingenieur Karl Bernhardt Apparatebau in 1926.
- Early 1950's Bernhardt Apparatebau
started developing lifejackets.
- SECUMAR launched on the market in 1961.
- Auto-inflating SECUMAR BS 8 lifejacket
radically reduced drownings
on European inland shipping in the 1970's.
SECUMAR lifejackets are adopted
by the German Lifeboat, other rescue services
and professionals.
- SECUMAR offers a worldwide service
and distribution network.

SECUMAR is a member of the German association of manufacturers and importers of life-saving and rescue equipment (FSR) an union of suppliers and importers of all water rescue equipment. For further information, see www.fsr.de.com



Bernhardt Apparatebau GmbH u. Co.

Lifesaving Equipment for Sea und Air
PO Box 1190, 25487 Holm, Germany

Tel.: +49-4103-125-0

E-Mail: info@secumar.com

www.secumar.com

📺 [youtube.com/BernhardtApparatebau](https://www.youtube.com/BernhardtApparatebau)

📘 [facebook.com/secumar](https://www.facebook.com/secumar)

📷 [instagram.com/secumar](https://www.instagram.com/secumar)

