



2022

PERFORMANCE



CONTENTS

04	THE LEGACY, THE FUTURE
06	NORTH SAILS PERFORMANCE
08	THE SCIENTIFIC METHOD
10	GORE-TEX® PRO
12	FABRIC TECHNOLOGY
16	4DL
18	DURASEALS
20	DESIGN INSPIRATION
22	OCEAN
28	OFFSHORE
34	INSHORE
40	GP AERO
46	CLOSING THE LOOP
48	MID LAYER
50	SAILOR JACKET
54	SOFTSHELL+
58	SHIRTS
66	PANTS & SHORTS
72	SUPPORTING THE SPORT
74	LUGGAGE
80	ACCESSORIES
84	CUSTOM GEAR
85	SIZING

NORTH SAILS, THE LEGACY, THE FUTURE



**“THE RELENTLESS
PURSUIT OF PERFECTION.”**

Go back sixty years and even Lowell North – the pioneering aerospace engineer who founded North Sails in 1957 – could not have foreseen the incredible progress, the sophistication of the North sails that now dominate the world’s racing fleets.

Lowell knew what he wanted back then. He was driven by the same goals that drive us today – lighter, stronger, more durable, faster shapes. He was the first to bring a scientific approach to material and product testing, as well as analytics-based sail design and performance development.

He didn’t know where this approach would take us or will take us. It was enough to gather brilliant people and set them on a journey of innovation and improvement. We get there one day at a time. Every day, everyone at North Sails tries to find a way to make our sails a little bit better.

The search for better materials led us to laminated polyester and mylar, the aramids, Spectra and carbon fibre. The search for better construction gave us radial panel layouts, moulded sails

and eventually the extraordinary composite membranes of 3Di. The search for better design tools took us into computers and built our unique proprietary design software, Flow and Membrain.

This endless pursuit of better engineering, of better technology is the reason we make the best sails, leading the way across disciplines and across classes from the America’s Cup through ocean and offshore to the Olympics and dinghies – winners of more one design National, World, and Olympic class titles than all other sailmakers combined.

We will still make the best sails on the planet in sixty years’ time. We just can’t tell you what those sails will look like yet.

And now we are bringing this same innovative, analytic, design and development-orientated approach to technical sailing clothes. After all, no one’s performance is optimal when they are wet when they shouldn’t be; or too hot, too cold, or just plain uncomfortable. It was time for foul weather gear for sailors, by sailors. By North Sails.

**“LIGHTER,
STRONGER,
MORE DURABLE.”**



NORTH SAILS PERFORMANCE

“FOUL WEATHER GEAR FOR SAILORS, BY SAILORS.”



“WE PUT A MAN ON THE MOON OVER FIFTY YEARS AGO, SO WHY CAN’T WE MAKE FOUL WEATHER GEAR THAT DOESN’T LEAK?”

Sound familiar? It’s probably not the first time that this rather inexplicable situation has been highlighted. It might have been a thought from someone sat in their own private puddle on the windward rail. Or someone who’s just caught a wave down the back of their neck.

There’s no doubt that modern materials, design and manufacturing have all vastly improved life for sailors since the day when Apollo 11 landed on the moon – but, when people at North were out sailing with folks we were hearing that it all seemed to have hit a plateau,

that there hadn’t been much progress in marine foul weather gear in recent years.

The foulies are good but not great...
It’s all kind of samey...
Same old problems...
Leaky knees and butts and latex seals that don’t last two minutes...

It felt like it was time to fix it. After all, that’s what North Sails do – the relentless pursuit of perfection. When we do something, we do it right. It’s the reason we are sailing’s most trusted brand.

@Yann Riou PolarYSE / PRB

“THE NORTH SAILS TEAM HAVE SAILED A LOT OF MILES WEARING ALL SORTS OF FOULIES OVER THE YEARS. THE NEW LINE INCORPORATES OUR COMBINED EXPERIENCE WITH THAT OF ONE OF THE MOST SUCCESSFUL FOUL WEATHER GEAR DESIGNERS IN THE WORLD – NIGEL MUSTO. WE ARE REALLY EXCITED ABOUT THE RANGE WE HAVE PUT TOGETHER.”

Ken Read - President | North Sails

So when we decided to create our own foul weather gear, we didn’t take it on lightly. We want it to work as advertised – foul weather gear is gear for foul weather, gear that keeps the foul weather out.

We started by getting Nigel Musto to lead the project – you probably recognise the name. Nigel understands the blend of technology, art and craft – along with the intricate design detail – that makes for great foulies, and he was as frustrated as the sailors at the recent lack of progress. He knew that in other extreme sports there had been more innovation in design and technology. There were lessons to be explored from these sports in fabrics, design and detailing.

The first step though was getting GORE-TEX onboard. It was mission critical, as it’s been proven as the only waterproof, breathable material tough enough for a sailboat. The next was to go out to the sailing community, both those within North Sails and those at the very top of the sport; the ranks of America’s Cup, Ocean Race, Vendee Globe and Olympic sailors.

There was no shortage of feedback, ideas or information... the hard part was to distil it down to the fundamentals that needed to change, and how best to change them. It wasn’t easy, but the results are all here in these pages. This is foul weather gear for sailors, by sailors – the best you’ll find. Period. It wouldn’t have our name on it if it wasn’t.

THE SCIENTIFIC METHOD

The scientific method was Lowell North's method. So it should be no surprise that our design work doesn't end when the first prototypes ship out of the factory.



“AFTER SAILING OVER 10,000NM IN THE OCEAN GEAR I CAN SAY IT IS THE MOST COMFORTABLE AND WATERPROOF FOUL WEATHER GEAR I HAVE WORN - THE NEW 4DL REINFORCEMENT IS A GAME CHANGER.”

Kévin Escoffier - skipper PRB



@Yann Riou PolaRYSE / PRB

The scientific method was Lowell North's method. So it should be no surprise that our design work doesn't end when the first prototypes ship out of the factory. This is just the beginning. Every North Sails product is the result of the same extensive process; research, innovate, design, build, test... rinse and repeat. Over, and over, and over again.

The North Sails Apparel range of foul weather gear has already been tested to destruction, and it should not be a surprise that the lead role in this process has been taken by an engineer; Kévin Escoffier.

One of the most experienced and successful ocean racing sailors of his generation, Escoffier has emerged from a backroom role running Team Banque Populaire's design office to win a Jules Verne Trophy and a Volvo Ocean Race.

Now he's been crowned as the new skipper of PRB, following in the footsteps of legends like Isabelle Autissier and Vendée Globe winners Michel Desjoyeaux and Vincent Riou. It was Riou who handed the batten over – as is the tradition for PRB – along with the 2010-designed boat in which Kévin will contest the 2020 Vendée Globe.

Kévin Escoffier has been doing a lot of sea miles to prepare for this new challenge, and he's been doing them while testing North Sails foul weather gear. He has already achieved a second-place finish in the IMOCA class of the Rolex Fastnet Race and the Transat Jacques Vabre. It's been the perfect testing environment for the Ocean range and Kevin's thoughtful, analytical feedback was essential to the refinement of the final designs.

The Offshore and Inshore gear was despatched to the racetracks of the world in the hands of North's experts and sail designers. The Offshore prototypes went south to Sydney for the start of one of the world's classic races, and then on to Hobart aboard overall winner Ichi Ban.

It was worn by sail designer and trimmer Dick Parker, just one of the talented group that had input into the prototypes. He came back from his first Hobart win with plenty of praise and lots more ideas – as did everyone else. Research, innovate, design, build, test... rinse and repeat.

“FOR THE FIRST TIME EVER I WAS DRY THE WHOLE WAY TO HOBART.”

Dick Parker, sail trimmer Ichi Ban, Overall Winner, Rolex Sydney Hobart 2019



GORE-TEX PRO, THE ONLY FABRIC FOR THE JOB

When the goal is to make the toughest foul weather gear on the planet there is only one fabric to choose from – GORE-TEX Pro. GORE-TEX has led the way towards drier, warmer sailing since the company invented breathable fabrics in 1969 – and they continue to do so with a brand new fabric for the first North Sails Apparel foul weather gear.

Back in 1969 the critical innovation was a membrane layer of expanded or stretched polytetrafluoroethylene (PTFE). The membrane had pores that were just the right size to let tiny sweat particles out, while blocking much bigger rain droplets from getting in.

In the 1980s an oleophobic, or oil-repelling chemical was added to stop sunscreen and sweat blocking the pores of the membrane and reducing the breathability. In the 1990s GORE-TEX OCEAN TECHNOLOGY was introduced with a membrane layer three and a half times thicker than standard

GORE-TEX, increasing the durability ten-fold. And now, North Sails Apparel will use the next generation of GORE-TEX materials. GORE-TEX Pro has always been a laminate, with an inner and outer layer of fabric to protect the inside from the abrasion of movement and to protect the outside of the membrane from the world.

The outer layer has a Durable Water Repellent (DWR) coating. DWR does what it says on the tin, it makes the water ‘bead’ and roll off the fabric, rather than being absorbed – a process called wetting out. Wetting out is bad; the clothing is heavier, less comfortable and because the layer of water absorbed into the fabric reduces breathability it’s much more likely to get sweaty and wet inside.

The most effective DWR coating has for many years been a perfluorocarbon (PFC) called perfluorooctanoic acid, or PFOA. Unfortunately, these coatings eventually wear or wash off – it’s one

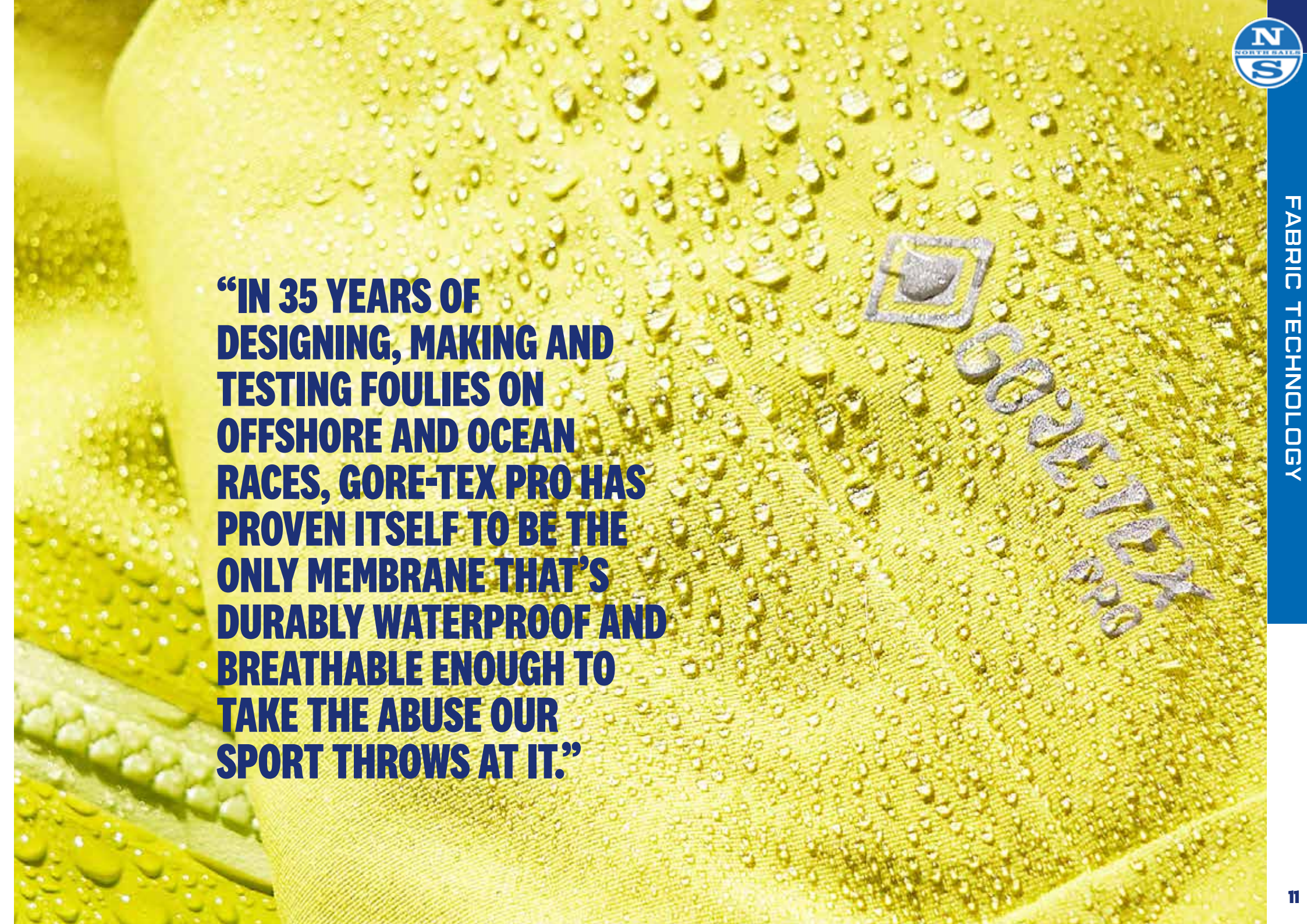
GORE-TEX[®]
PRO

of the reasons why older or well-worn foul weather gear is less good at keeping you warm and dry.

Worse, the PFOA coating is also toxic and once it’s in the environment it doesn’t degrade for a very, very long time. This leads to a toxic build-up in animals, fish and humans. So the EU has banned PFOA from July 2020; a ban that’s soon likely to extend to other countries and other PFCs that are still used as DWR coatings.

Our new fabrics take a different approach, with a construction that uses much thinner threads and much tighter weaves. We call it TightWeave (TW) and it makes fabrics more naturally water repellent, giving them a quality that’s part of the fabric, that won’t wash off. It makes the fabric more durable, so the foul weather gear will perform better for longer. And it isn’t leaching toxic chemicals into the environment. So that’s a win for humans, fish, animals and the oceans.

“IN 35 YEARS OF
DESIGNING, MAKING AND
TESTING FOULIES ON
OFFSHORE AND OCEAN
RACES, GORE-TEX PRO HAS
PROVEN ITSELF TO BE THE
ONLY MEMBRANE THAT’S
DURABLY WATERPROOF AND
BREATHABLE ENOUGH TO
TAKE THE ABUSE OUR
SPORT THROWS AT IT.”





FABRIC TECHNOLOGY

North Sails Performance foul weather gear is called that for a reason. We've refined every detail with performance in mind and that starts with the fabric. The new TightWeave (TW) range has been designed for the optimum mix of capabilities in the different race environments.

There's a focus on weight – with the dry weight of every garment listed on each product page – because we believe that weight is an important part of the performance matrix.

A light-weight garment improves human performance whether running marathons, playing football or trimming sails. Sailing clothes should weigh just enough to keep you warm and dry in the conditions – any further weight is a performance penalty that saps the sailor's speed, endurance, and flexibility. And when it's not being worn the weight of the foul weather gear is a performance penalty

that saps the speed of the boat. No one voluntarily adds weight to the hull, sails or gear of a modern sailboat, so why add it in the foul weather gear stowed down below?

While dry weight is an important performance number, the impact multiplies when it's wet. The minimal water absorption of our TightWeave fabrics and our non-absorbent 4DL Laminated Reinforcements means that the wet weights are as much as half of that of our competitors.

No one willingly adds aerodynamic drag to a racing sailboat these days either. Not everyone is going at Mach 2 with their hair on fire on foils, but every category of boat is quicker than it was a generation ago. The faster you go the more the aero drag hurts you – just ask the America's Cup sailors. North Sails Performance clothes stretch to fit closer than any others – try them.



TIGHTWEAVE™

TWTECH

All our fabrics are based on TightWeave or TW technology that makes the material more naturally water repellent and more durable, minimising water absorption and maximising abrasion resistance. The number we give each fabric is the total weight of the laminate per square meter in grams.

TW240

TW240 is our toughest laminate with GORE-TEX Pro fabric at 240g/m². It's used on our Ocean range of products. When sailing in the most brutal conditions – we're talking Southern Ocean here – it's critical to use a fabric that is heavy enough to maintain a barrier of insulating air inside the garment, and durable enough to resist tears and abrasion from outside. Nothing less than TW240 will cope.

TW160

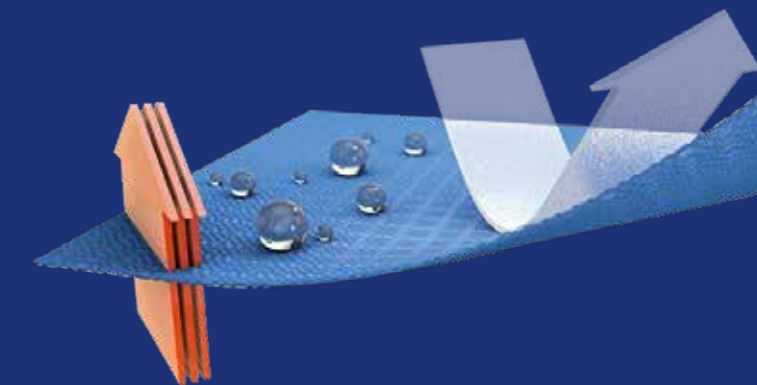
TW160 is our Offshore race laminate using GORE-TEX Pro at 160g/m². When racing inshore or on short offshores (spanning one or a few days), minimising the weight of foul weather gear benefits both human and boat performance. TW160 strikes the perfect balance between performance and the required durability for this environment.

TW140S STRETCH

TW140S is our Inshore race laminate using Pertex Shield Air at 140g/m². The 'S' is for stretch; 30% stretch designed into the laminate for low aero drag. This is the ultimate lightweight, high performance, extremely breathable fabric for those racing inshore at elite level.



Pertex is an extremely breathable technology, first developed in 1979 it relies on moisture moving through the fibre filaments of the fabric via capillary action. Pertex Shield Air is the latest iteration and uses an air permeable nanofibre that's laminated to a lightweight, woven protective layer. The combination creates a very supple material with remarkable stretch properties.



“NORTH SAILS PERFORMANCE FOUL WEATHER GEAR IS CALLED THAT FOR A REASON. WE'VE REFINED EVERY DETAIL WITH PERFORMANCE IN MIND AND THAT STARTS WITH THE FABRIC.”





FABRIC TECHNOLOGY



FIVE STAR SYSTEM



It is never easy to choose one product over another, particularly when there is little agreement on the standards used for comparison. If you want to know a car's fuel economy, there is an agreed measure – miles per gallon – but any test result will depend significantly on the driving conditions. So it is with fabric breathability – only more so...

There are a couple of different units and three different tests used to measure breathability. There is 'moisture vapour perspiration' (MVP) which measures the amount of water that will pass through the fabric. It is measured in grams of water per square meter of fabric in 24 hours (g/m²/24hrs).

A couple of different tests for breathability use this standard. There is the 'upright cup' test where the fabric seals a cup of water and the amount that passes through the cup is measured over a fixed

period. The 'inverted cup' test is similar, but the cup is upside down. Obviously, the results are very dependent on the conditions. The time, the amount of water, the temperature and humidity all need to be carefully controlled – and checked as part of any comparison.

The sweating hot plate test is more complex and is intended to mimic moisture transmission driven by body heat. It uses a hot plate to warm water that must evaporate through the fabric being tested. The rate of evaporation will determine how quickly the water can cool, and so the amount of energy being used to keep the hot plate 'hot' becomes a measure of breathability. It is called 'resistance of evaporation of a textile' (RET) and scales from 0 (completely breathable) to a figure of 30 or more which shows little or no breathability.

Complicated, isn't it? And that's just the breathability, never mind measures of waterproofness or durability of the foul weather gear. Since no one can agree on the tests or the test conditions, comparing the data published by manufacturers is difficult and maybe even pointless.

We didn't want to add to the white noise, and since we can't control what's put out there by other manufacturers we thought that the best approach was to give you an effective way to compare our own products.

We use a simple 5-star system to rate our products for the three main qualities of breathability, waterproofness and durability. The rating is for the whole product, and not just the fabric. For instance, for the durability we have looked at the fabric tear strength, abrasion resistance and the reinforcement patches as well as the design.

No surprise that 5-stars means it is as good as it gets, while 1-star is the lowest rating. We have tried to be as honest and accurate as we can in these ratings so you can effectively match the product to the sailing that you are going to do.

The system only compares the North Sails foulies against each other – it says nothing about their performance against anyone else's gear. The only way to do that is to find an independent review – remembering what we said about the different tests – or to try them all out!

SoftShell+

This is not just a fleece with a finished face fabric – which is what passes for a soft shell for most people. This is North's SoftShell+, made from a bespoke, three-layer laminate. It starts with a flat, knitted face with a DWR finish. The next layer is a membrane that makes the garment breathable and waterproof, while the inner face is a patterned microfleece designed to reduce weight, reduce water absorption, increase loft and air entrapment for extra warmth. It is lightweight, soft to the touch and very comfortable to wear.

It's not just a soft shell, it's SoftShell+.

Weight

The one thing that is not captured by our 5-star rating system is the weight of the garment. The weight is related to the other qualities – in particular, it is easy to make a garment more durable and waterproof if you don't mind making it heavy.

We do mind making it heavy. We publish the weight of all our garments with the ratings so you can see how hard we have worked to keep the weight down. These weights should be compared to our competitors. We think you will find significant differences in the weights to comparable products from other manufacturers, and that will translate into performance: neither humans (when you're wearing it) nor boats (when you are not) go faster when they are carrying unnecessary weight.



Polygiene's technology is the real deal – a fabric treatment that stops the growth of odour-causing bacteria. North Sails Polygiene gear will stay fresh for much longer, and not just when you are wearing it. Polygiene will also stay effective through many more washes than any other anti-bacterial treatment.

The active ingredient is a biocide made of silver chloride, a silver salt that inhibits and guards against the growth of bacteria and fungi. It keeps the material fresh and hygienic – so you can wear it for a couple of days offshore, and not have to worry about the whereabouts of the nearest shower when returning ashore.

Polygiene has a background in the healthcare sector and the treatments have undergone extensive skin sensitivity testing, they don't interfere with the skin's natural bacterial flora. It is applied at the same time as other treatments during the finishing stage of the material and is manufactured in the EU with minimal use of resources and in accordance with strict environmental regulations.

Polygiene Stays Fresh Technology is bluesign® approved, the textile industry's demanding environmental certification with a life-cycle approach. It also has OEKO-TEX Eco Passports approval, it's registered under the EU Biocidal Product Directive (BPD) and approved by the US Environmental Protection Agency (EPA). It also meets the requirements of REACH, the EU's chemicals legislation.



4 LAYER DURABLE LAMINATION

4DL

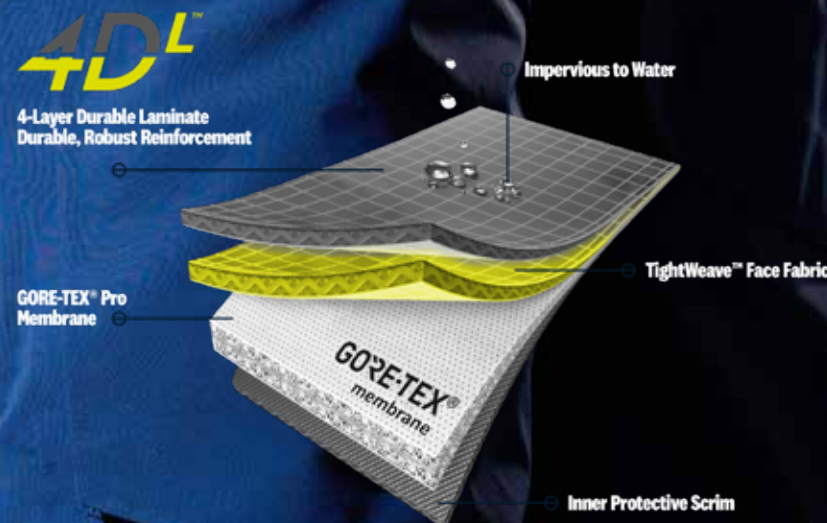


When North Sails talked to the sailing community about what the planet's best foul weather gear should look like, we quickly got a good idea of the two main problems that we needed to fix.

Leaky knees and butts and latex seals that don't last two minutes...

Identifying these issues was the first and easiest step – everyone has had a wet butt and a torn neck seal. Understanding why they were happening would take us down the path to a solution.

Let's take the knees and butts first; sailing puts these parts of the body into contact with abrasive surfaces a lot more than any other sport. If we want the gear to be durable we need to reinforce these areas effectively, and the traditional method has been to stitch a Cordura patch in place.



“THIS IS WHERE IT REALLY HELPED TO BE THE WORLD’S MOST ADVANCED SAILMAKING FIRM WITH A TRACK RECORD FOR INNOVATION IN LAMINATING TECHNOLOGY.”

Our research identified two problems with this method. The first was that Cordura is thick and heavy. It adds weight to the foul weather gear even when it's dry, and as it absorbs water the problem gets worse. The reinforcing patch also creates a pocket between the GORE-TEX Pro and the Cordura that can retain water; so it takes a long while to dry even when it drains efficiently.

The second problem is with the stitched construction; adding the thick Cordura creates a weak point on the seams, because it's difficult to get the waterproofing tape to stick to a lumpy seam. This is often the reason why the seams start leaking.

So we looked at changing both the material and the method of attachment. This is where it really helped to be the world's most advanced

sailmaking firm with a track record for innovation in laminating technology. We found a lighter and much tougher material than Cordura that could be used for the reinforcement. Then we worked out how to laminate it in place as a vital fourth protective layer over the 3-layer GORE-TEX PRO, bringing you 4-Layer Durable Laminated reinforcement (4DL).

The result is much lighter foul weather gear, in the case of the trousers it's a full 30% lighter when dry. When it's wet, there are even greater gains, because 4DL doesn't absorb water, and the lamination makes it impossible for moisture to get trapped.

The seams are much more secure and reliable because the material is laminated straight onto the outer fabric. And finally, the 4DL reinforcement

is completely waterproof. So there is no chance of the breathability reversing and sucking water into the gear when sitting on a particularly hot, wet deck.

If you're thinking, 'it's laminated, so when's it going to delaminate?' then we're ahead of you. We've run this gear in a washing machine for 200 hours without any signs of the 4DL coming unstuck. It's a much more brutal test than even Kévin Escoffier could manage on the Transat Jaques Vabre and the delivery trip home – over 10,000 miles of testing.

There's no doubt that 4DL reinforcement is a remarkable solution to an age-old problem. We can't wait for you to see it, and even better, we can't wait for you to sail in it.

DuraSeal



There was a good reason why latex became the material of choice for seals on drysuits and serious foul weather gear. It's exceptionally flexible, so it gets a watertight grip around necks, wrists and ankles.

Unfortunately, there are several reasons why latex wasn't such a great idea – for one, the material degrades in ultraviolet (UV) light. Latex is also fragile; it can tear from even the tiniest nick. This makes the seals vulnerable to damage as well as high maintenance; demanding careful use, washing and regular replacement.

These are worrying qualities if you are going to be out in tough conditions a long way from repair. A blown neck or wrist seal can turn a drysuit into a cold, wet suit very quickly. Never mind the stress of trimming to size the neck seal of your brand-new smock: tip; don't use nail scissors!

The other problem with latex is that it can produce a skin reaction, and even if you are

not allergic, many people are left with the unflattering and uncomfortable 'garrotted' look after a day on the water.

Overall, we had no doubt that there was room for improvement.

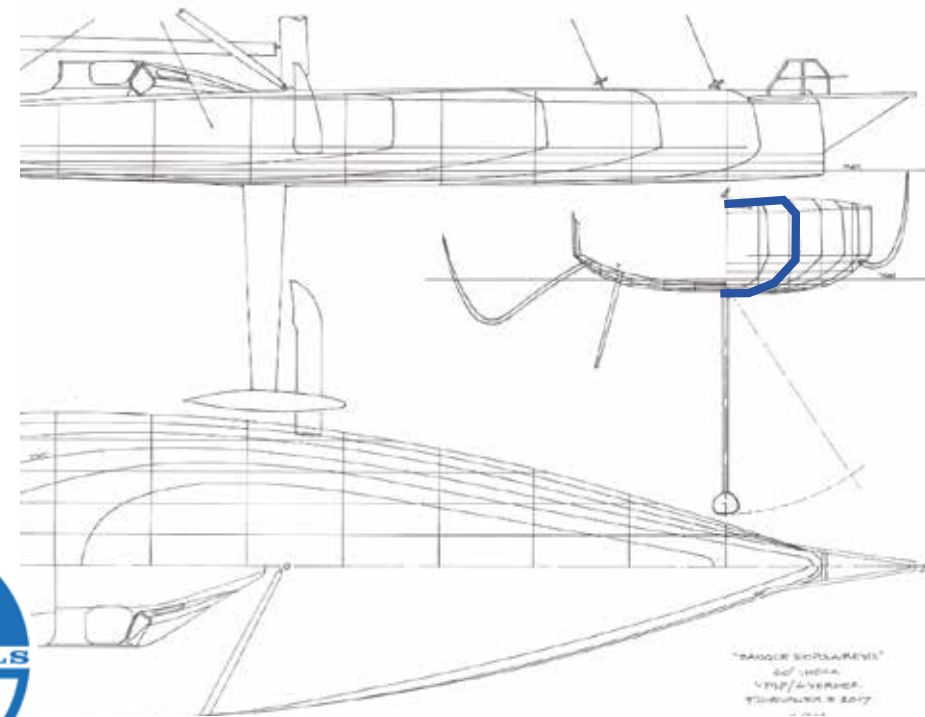
Welcome to the DuraSeal; a brand-new innovation from North Sails Apparel, and the answer to the many problems of latex. The DuraSeal is a super thin, 1.2mm neoprene so it's incredibly stretchy. It's even easier than a latex seal to get on and off. The DuraSeal also has a protective external layer of nylon that makes it much tougher, and keeps the sun off it and stops the UV degradation.

The real magic though is in the DuraSeal finish on the inside, a super smooth rubber that just glides into place and seals. And as it has none of the allergic and irritant properties of latex no one has to come off the water looking like they just escaped the hangman's noose in a bad pirate movie. DuraSeal – make sure your foulies have got one.



“A BLOWN NECK OR WRIST SEAL CAN TURN A DRYSUIT INTO A COLD, WET SUIT VERY QUICKLY.”

DESIGN INSPIRATION



The world has changed; boats are no longer round and curved. Just check out the latest designs from the race circuits where speed is everything, like the Open 60s and the foiling mono-hulls of the America's Cup. There are a lot of hard chines and square corners. Sharp angles maximise righting moment and minimise wetted surface. Sharp angles are fast.

We took these boats as the inspiration for our new designs, specifically (very specifically) the shape of Station 3 of Arkea Paprec (IMOCA 60); built at CDK to a Juan Kouyoumdjian design, and assembled by

Sébastien Simon and Vincent Riou.

This shape is reflected everywhere on our gear, the pockets, collar and hem profiles, tabs and reflectors. The design is clean, with no unnecessary seams. We have kept the external stitching to a minimum by using modern bonding technology. The result is less clutter, and less potential for failure and leakage.

It's also a strikingly contemporary and very fresh look that we know you are going to love.

SPUME VISOR AND HIGH SHAPED COLLAR

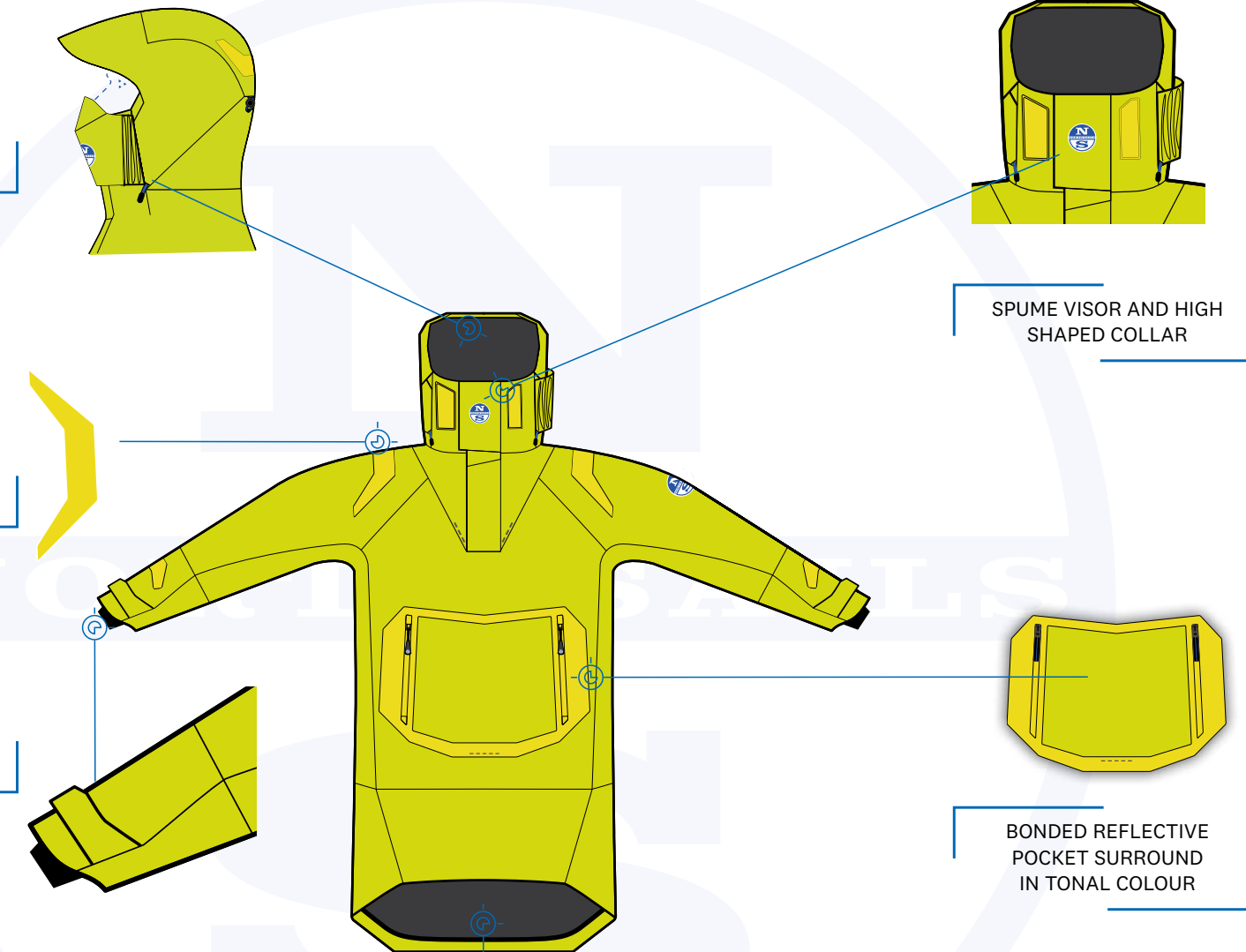
SHOULDER REFLECTOR IN TONAL FOIL APPLICATION BONDED TO FABRIC

ERGONOMIC SHAPED CUFF

SCOOP DROPPED HEM

SPUME VISOR AND HIGH SHAPED COLLAR

BONDED REFLECTIVE POCKET SURROUND IN TONAL COLOUR



OCEAN



Ocean is the choice of those who want the very best, because they are going to face the very worst the ocean can throw at them. If you're headed to wild, deep blue water – perhaps on a trans-oceanic voyage, or a winter crossing of the Bay of Biscay – then you will need what the sailors in the Ocean Race or Vendee Globe need; the North Sails Ocean range.

This is the most breathable, the most waterproof and the most durable gear that we make. We'd tell you that this is the gear for extreme conditions, but everybody says that... so instead, let's just say that this is the gear that will never let you down, no matter how bad it gets.



NEW SOUTHERN OCEAN JACKET 27M028

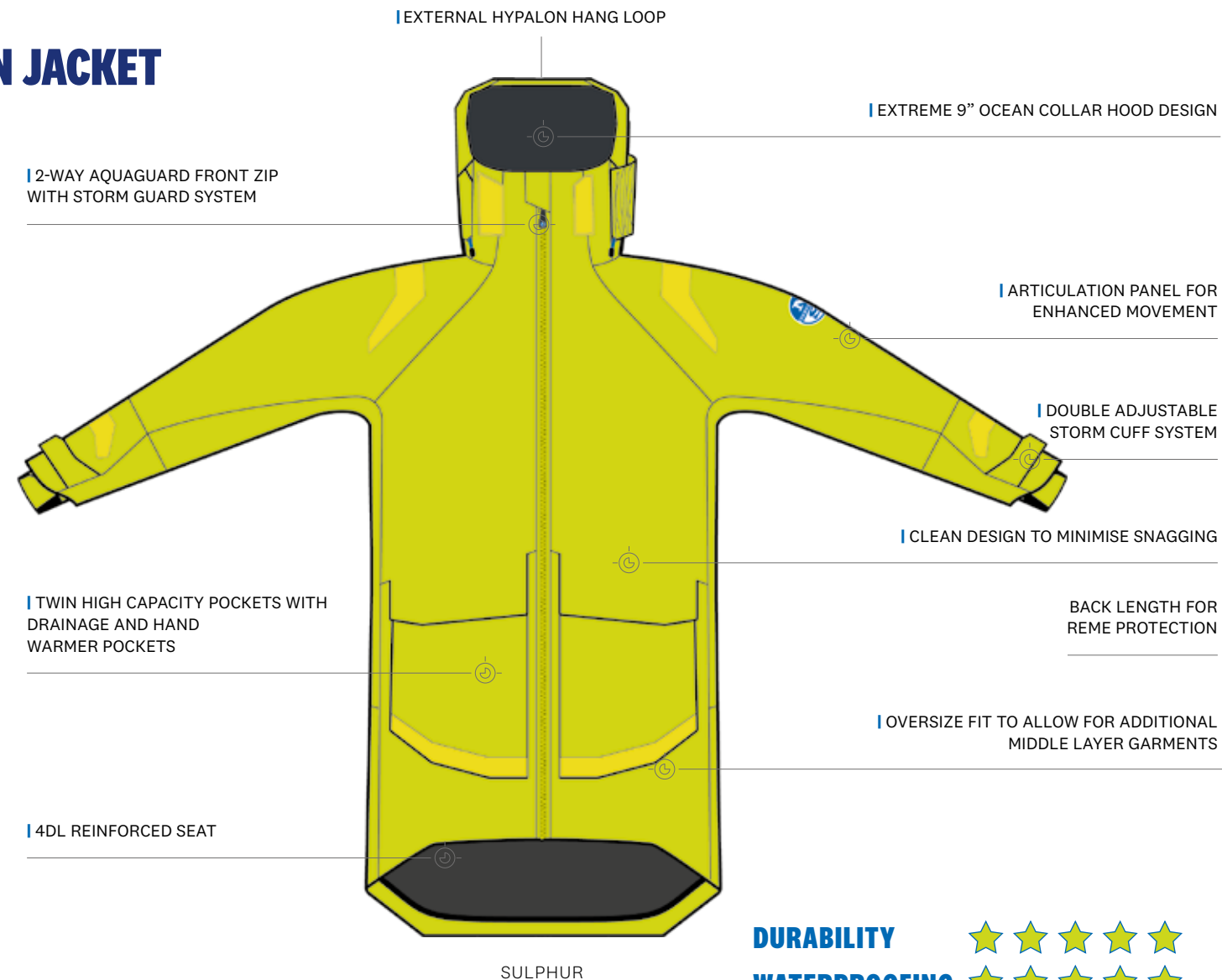
SIZE: S | M | L | XL | XXL



GORE-TEX®
PRO

TW240

4DL



DURABILITY	★★★★★
WATERPROOFING	★★★★★
BREATHABILITY	★★★★★
WEIGHT (Large)	1200g

More details on fabric technology on pages 10 - 18



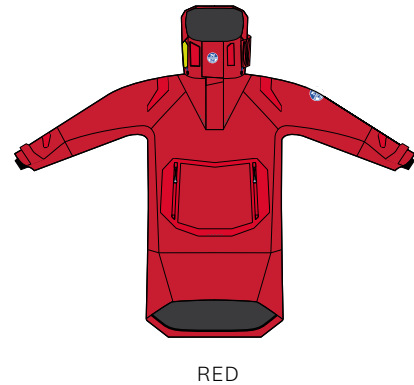
SOUTHERN OCEAN TECHNOLOGY



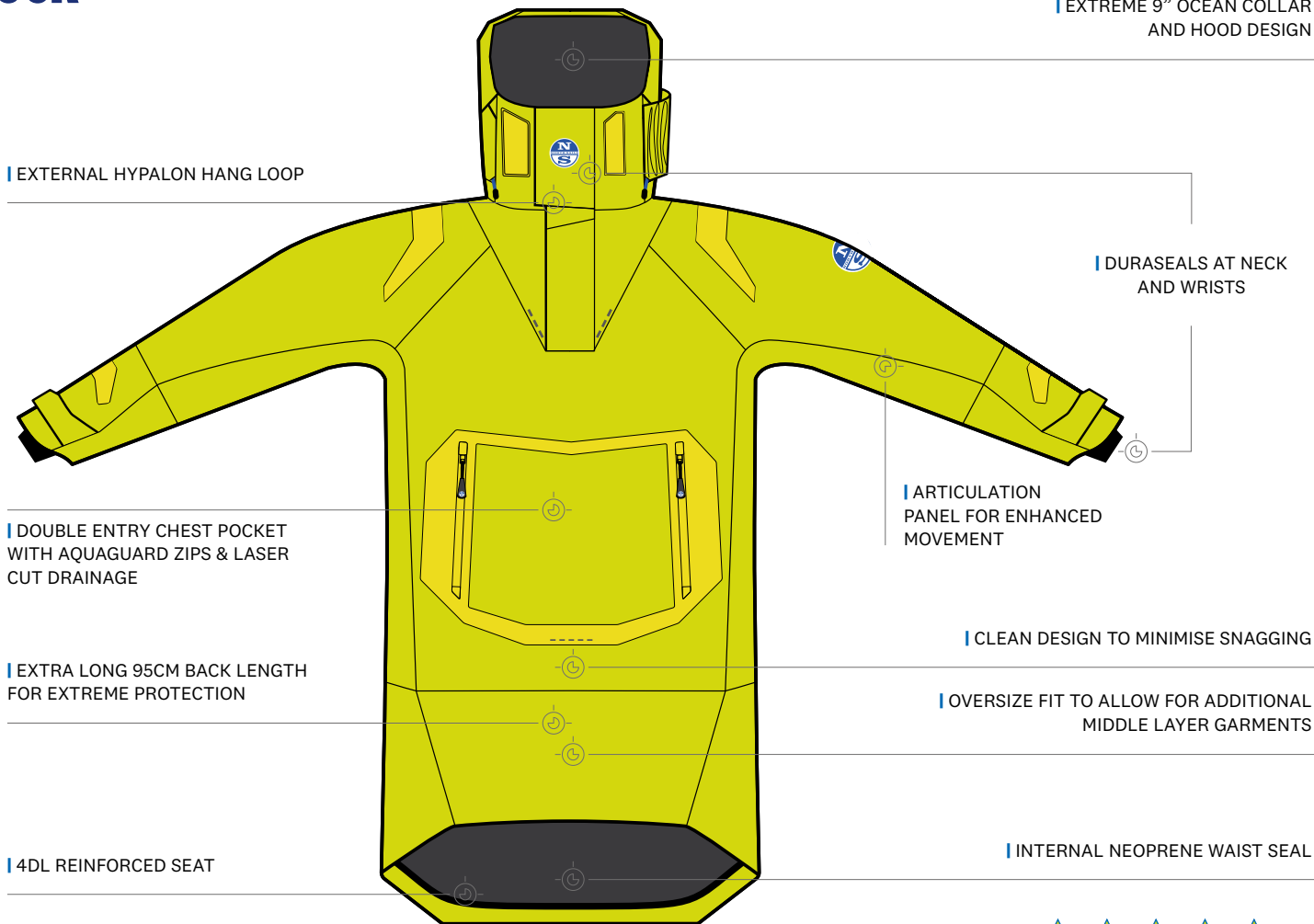
SOUTHERN OCEAN SMOCK

27M020

SIZE: S | M | L | XL | XXL



GO^{RE}-TEX[®] PRO | TW240 | 4D^L | DuraSeal



DURABILITY	★★★★★
WATERPROOFING	★★★★★
BREATHABILITY	★★★★★
WEIGHT (Large)	1230g





ATLANTIC OCEAN SMOCK

27M024

SIZE: S | M | L | XL | XXL



- DURABILITY ★★★★★
- WATERPROOFING ★★★★★
- BREATHABILITY ★★★★★
- WEIGHT (Large) 860g

GORE-TEX® PRO | TW240 | 4DL

OCEAN TROUSER

27M420

SIZE: S | M | L | XL | XXL



- DURABILITY ★★★★★
- WATERPROOFING ★★★★★
- BREATHABILITY ★★★★★
- WEIGHT (Large) 1060g

GORE-TEX® PRO | TW240 | 4DL



OFFSHORE



Think Fastnet, Sydney-Hobart, or the Newport-Bermuda – the classic medium-distance offshore races. Or perhaps cruising in the Western Approaches in the autumn. These are the natural homes for our Offshore range. It's not trans-oceanic gear that will take you through one Southern Ocean storm after another for weeks on end... but it is not far off. Offshore is only dialling it down a notch.

The Offshore range retains the waterproofing and breathability of the Ocean range, but it gives up a little durability in exchange for gains in comfort and a weight saving. This is particularly useful on those offshore races where there isn't time for a full-watch system to kick in. The ones where you live in your foulies for a couple of days; that's when the breathability, waterproofness and extra comfort and lightness of the Offshore range come into their own.



GORE-TEX®
PRO

TW160

4DL

More details on fabric technology on pages 10 - 18



OFFSHORE JACKET 27M045

SIZE: S | M | L | XL | XXL



PHANTOM



RED



SULPHUR

DURABILITY	★★★★☆
WATERPROOFING	★★★★★
BREATHABILITY	★★★★★
WEIGHT (Large)	830g



OFFSHORE - PERFORMANCE



NEW **WOMEN'S OFFSHORE JACKET**
27W045

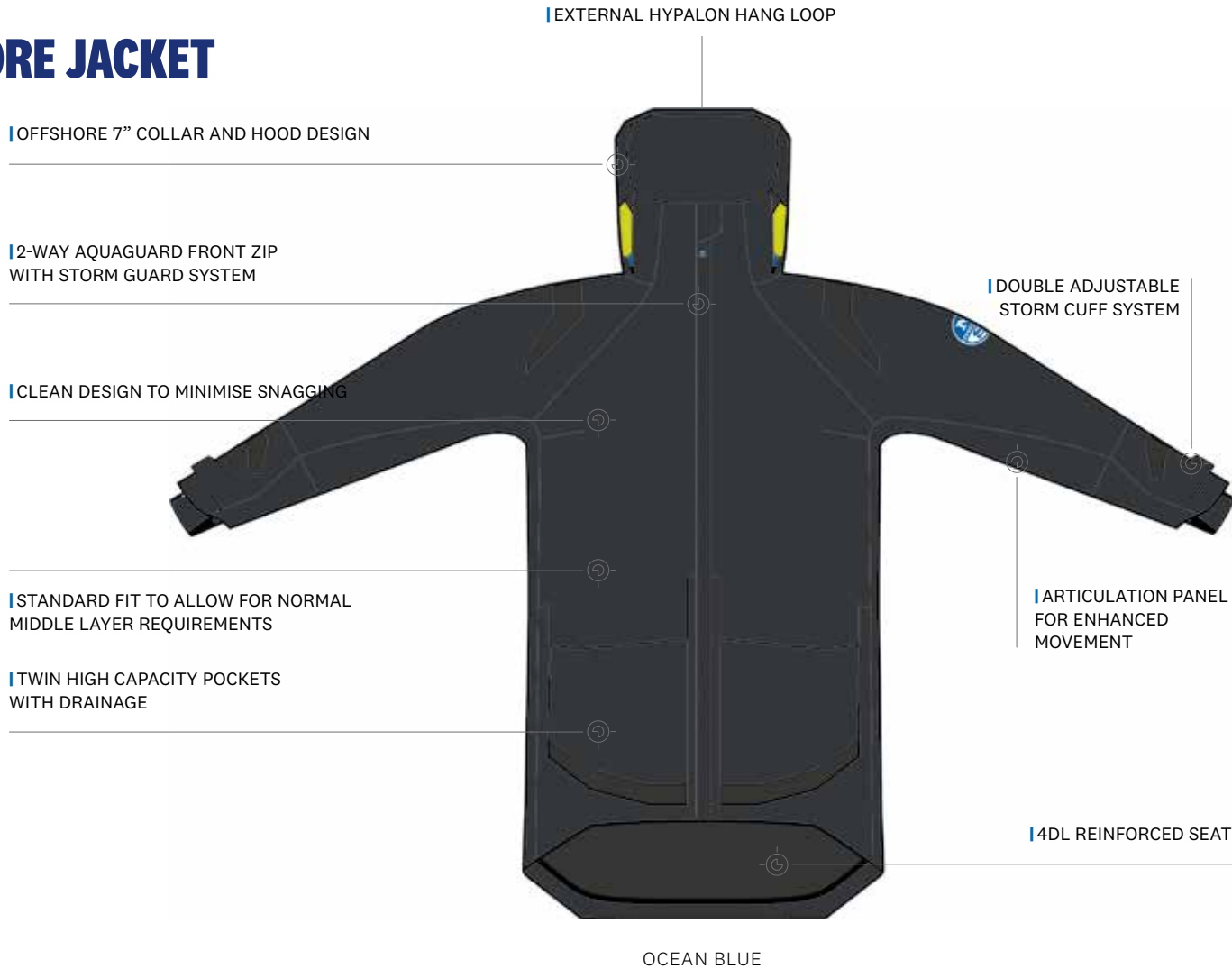
SIZE: XS | S | M | L | XL



OCEAN BLUE

DURABILITY ★★☆☆☆
WATERPROOFING ★★★★★
BREATHABILITY ★★★★★
WEIGHT (Small) 625g

GO^{RE}-TEX[®] PRO | TW160 | 4D^L



OFFSHORE TROUSERS
27M440

SIZE: S | M | L | XL | XXL



PHANTOM

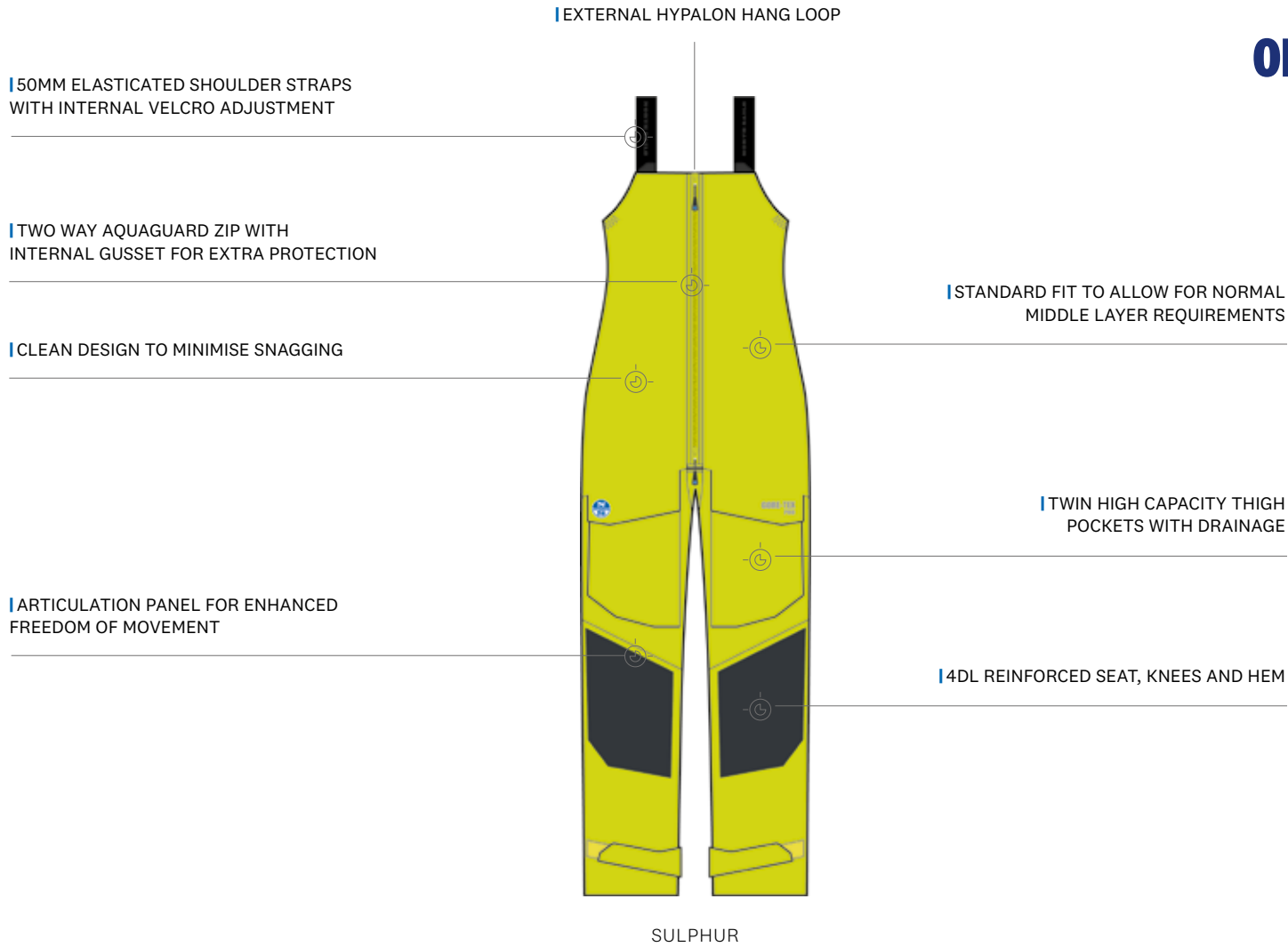


RED



OCEAN BLUE

DURABILITY ★★☆☆☆
WATERPROOFING ★★★★★
BREATHABILITY ★★★★★
WEIGHT (Large) 790g



GO^{RE}-TEX[®] PRO | TW160 | 4D^L



OFFSHORE SMOCK

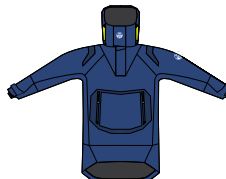
27M040

SIZE: S | M | L | XL | XXL

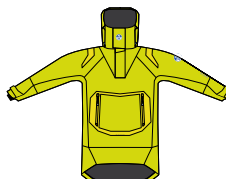
NEW COLOUR



PHANTOM



OCEAN BLUE



SULPHUR

- DURABILITY

WATERPROOFING

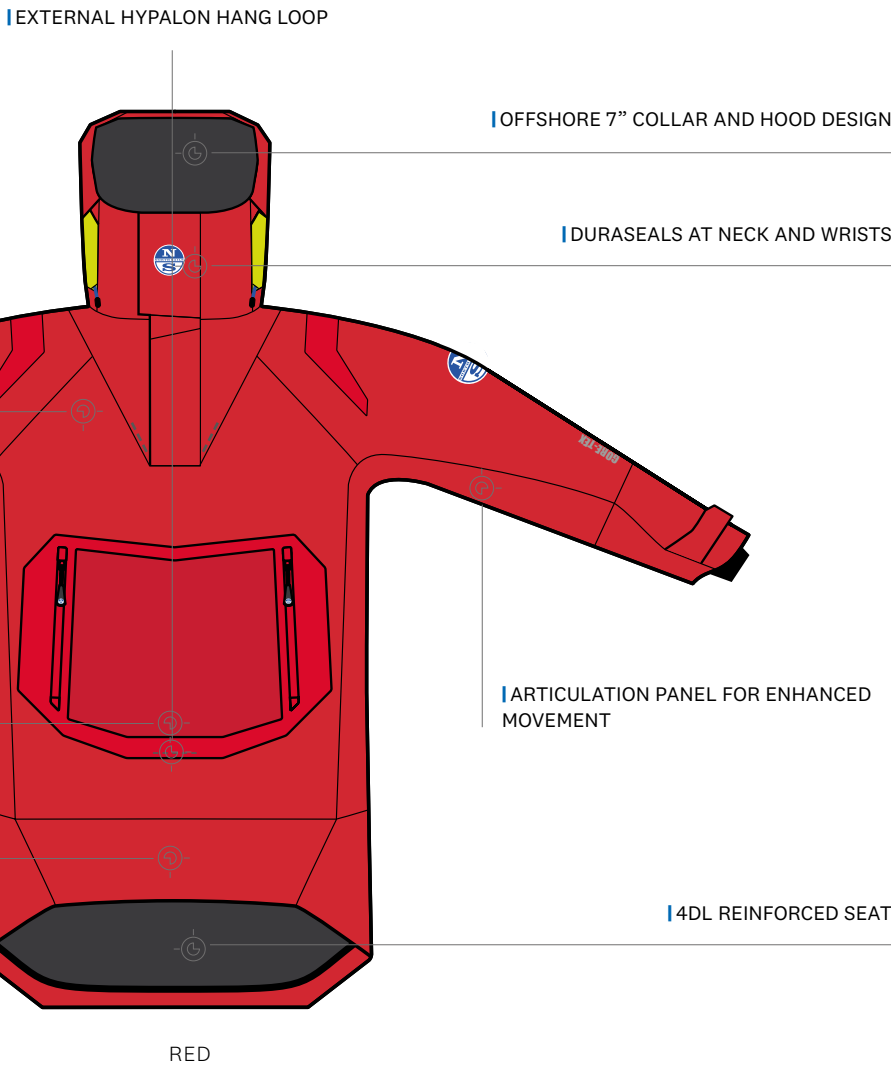
BREATHABILITY

WEIGHT (Large)
- ★ ★ ★ ★ ☆

★ ★ ★ ★ ★

★ ★ ★ ★ ★

800g



GORE-TEX®
PRO

TW160

4DL



WOMEN'S OFFSHORE SMOCK

27W040

NEW

SIZE: XS | S | M | L | XL



OCEAN BLUE

- DURABILITY

WATERPROOFING

BREATHABILITY

WEIGHT (Small)
- ★ ★ ★ ★ ☆

★ ★ ★ ★ ★

★ ★ ★ ★ ★

655g

GORE-TEX®
PRO

TW160

4DL

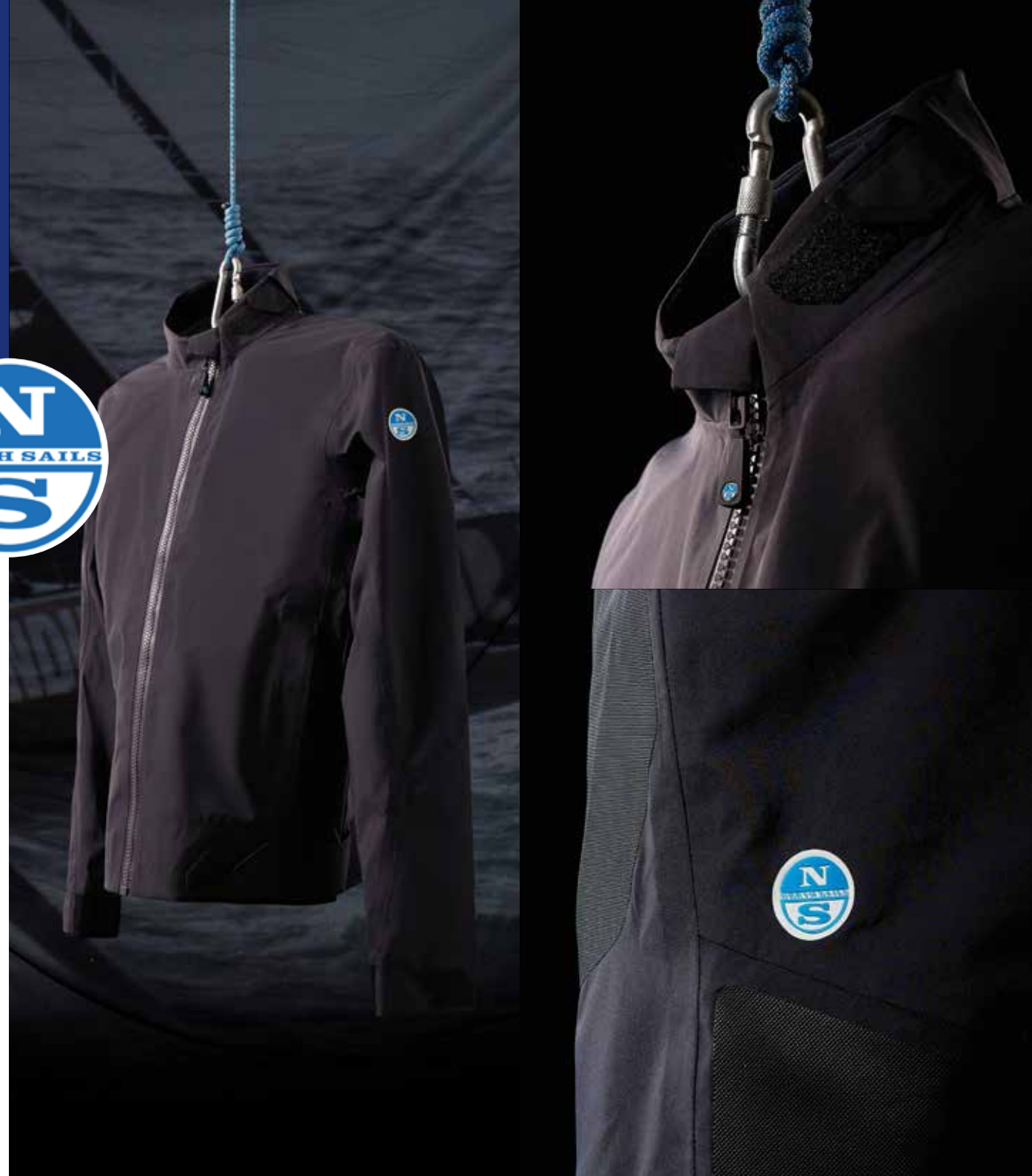


INSHORE



Inshore racing and coastal cruising have a different tempo to their offshore siblings. The proximity of land or the next mark means that things need to happen more quickly; circumstances – and the weather – can change fast.

The Inshore range offers greater flexibility in the design, emphasising movement and lightness over durability and waterproofness. It also offers greater flexibility in the range of garments with a choice of race hybrid, race smock and race jackets to pair with the trousers. So whether it's the bow or the navigatorium, Cowes Week or round the cans in Chesapeake Bay or Auckland Harbour, our Inshore gear will keep you warm, dry and comfortable.



INSHORE RACE HYBRID 27M055

SIZE: S | M | L | XL | XXL

ADJUSTABLE NECK SEAL DESIGN

EXTERNAL HYPALON HANG LOOP

ASYMMETRIC AQUAGUARD FRONT ZIP WITH STORM GUARD SYSTEM

SLIM FIT ALLOWING FOR LIGHT MIDDLE LAYER REQUIREMENTS

CLEAN DESIGN TO MINIMISE SNAGGING

TWIN POCKETS WITH AQUAGUARD ZIPS ARTICULATION PANEL FOR ENHANCED FREEDOM OF MOVEMENT

ADJUSTABLE WAIST SEAL

ADJUSTABLE WRIST SEALS



OCEAN BLUE

NEW COLOUR



RED



PHANTOM

GORE-TEX®
PRO

TW160

DURABILITY ★★☆☆☆
WATERPROOFING ★★☆☆☆
BREATHABILITY ★★★★★
WEIGHT (Large) 480g

More details on fabric technology on pages 10 - 18



INSHORE - PERFORMANCE

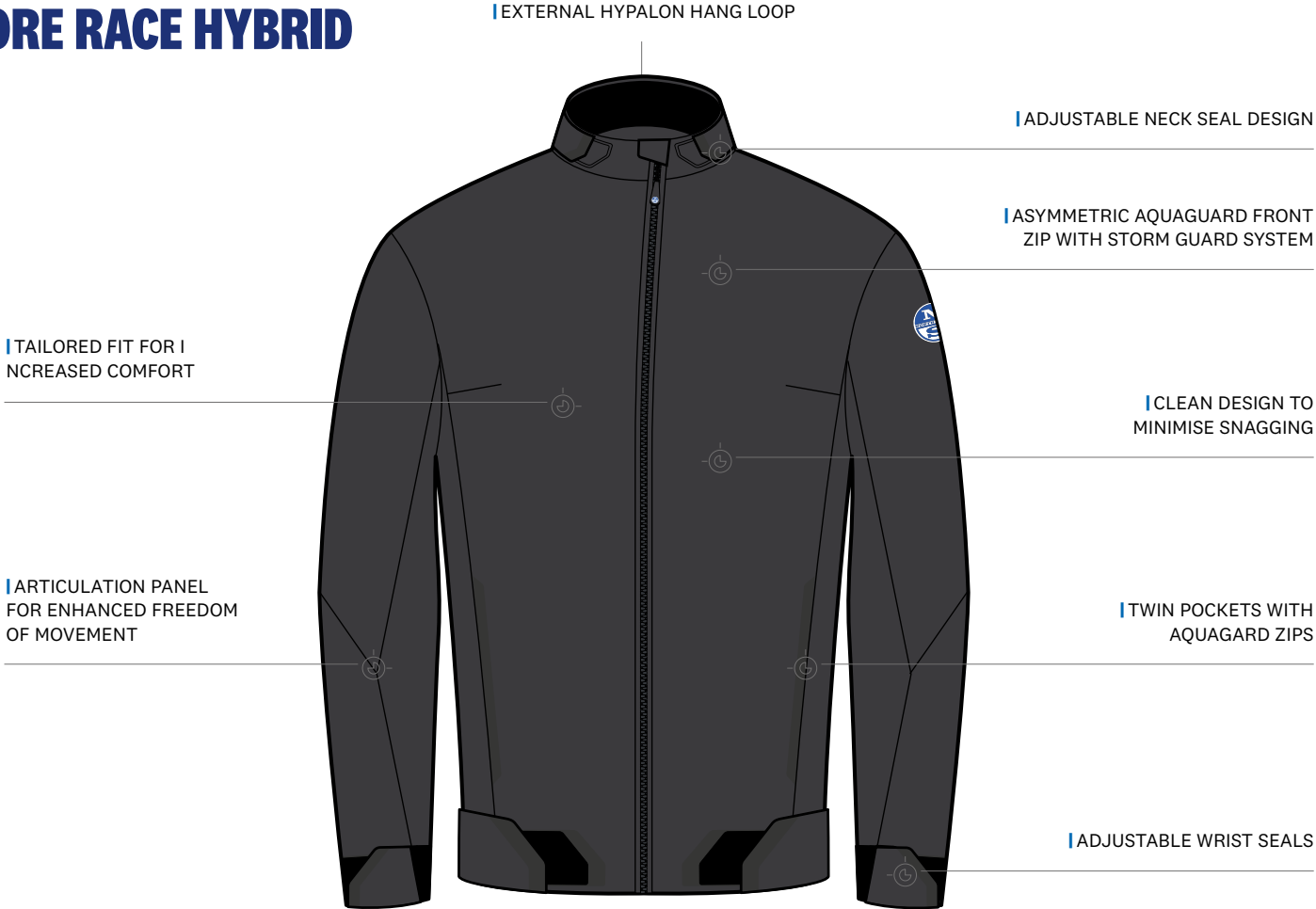


NEW **WOMEN'S INSHORE RACE HYBRID**
27W055

SIZE: XS | S | M | L | XL



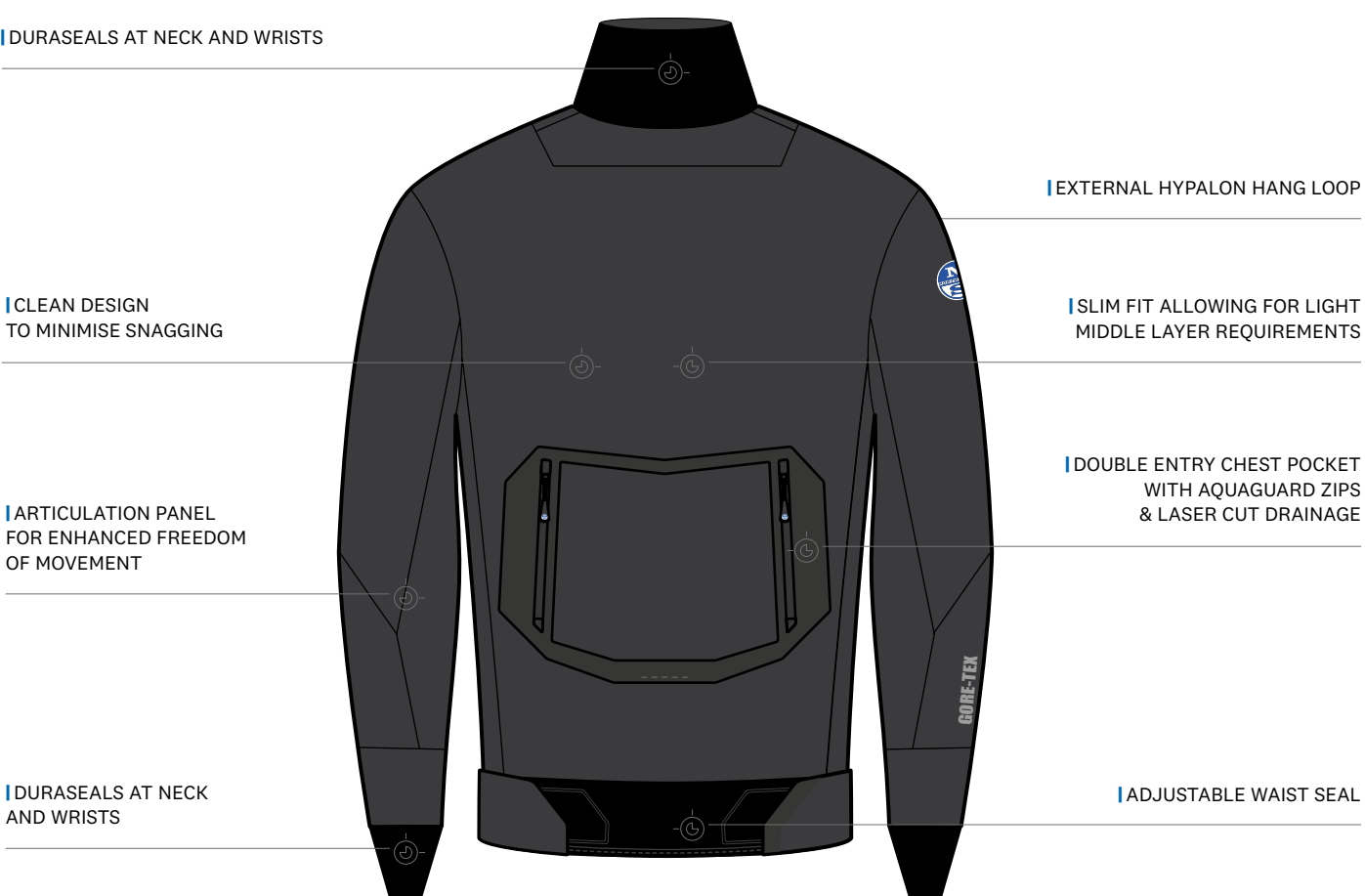
OCEAN BLUE



PHANTOM

DURABILITY ★★☆☆☆
WATERPROOFING ★★☆☆☆
BREATHABILITY ★★★★★
WEIGHT (Small) 370g

GO^{RE}-TEX[®]
PRO | TW160



PHANTOM

GO^{RE}-TEX[®]
PRO | TW160 | DuraSeal

INSHORE RACE SMOCK
27M050

SIZE: S | M | L | XL | XXL



RED



OCEAN BLUE

DURABILITY ★★☆☆☆
WATERPROOFING ★★★★★
BREATHABILITY ★★★★★
WEIGHT (Large) 540g





NEW COLOUR

SIZE: S | M | L | XL | XXL

- + Clean design to minimise snagging
- + Slim fit allowing for light middle layer requirements
- + Inshore 5" collar design with removable hood
- + Aquaguard front zip with Storm Guard system
- + Adjustable outer cuff
- + Chest pocket with Aquaguard zip & laser cut drainage
- + Twin side pockets with Aquaguard zips
- + Articulation panel for enhanced movement
- + External Hypalon hang loop

WEIGHT (Large) 570g



SIZE: XS | S | M | L | XL

- + Clean design to minimise snagging
- + Tailored fit for increased comfort
- + Inshore 5" collar design with removable hood
- + Aquaguard front zip with Storm Guard system
- + Adjustable outer cuff
- + Twin side pockets with Aquaguard zips
- + Articulation panel for enhanced movement
- + External Hypalon hang loop

WEIGHT (Small) 455g



SIZE: S | M | L | XL | XXL

- + Clean design to minimise snagging
- + Slim fit allowing for light middle layer requirements
- + 50mm elasticated shoulder straps with internal velcro adjustment
- + Two way Aquaguard zip with internal gusset for extra protection
- + 4DL reinforced seat, knees and back hem
- + Thigh pocket with drainage
- + Articulation panel for enhanced freedom of movement
- + External Hypalon hang loop

WEIGHT (Large) 700g



SIZE: XS | S | M | L | XL

- + 50mm elastic shoulder straps with internal velcro adjustment
- + Two way aquaguard zip with internal gusset for extra protection
- + Clean design to minimise snagging
- + Articulation panel for enhanced freedom of movement
- + Tailored fit for increased comfort
- + Twin high capacity thigh pockets with drainage
- + 4DL reinforcement seat
- + External hypalon hang loop

WEIGHT (Small) 590g

GP AERO



The GP Aero range epitomises the innovation that you have come to expect from North Sails. This is high-performance race gear. It is for yacht racing as a truly athletic sport, with design inspiration from cycling jackets rather than traditional foulies.

The GP Aero is lighter, more aerodynamic, and more flexible and comfortable than anything else out there. The jacket weighs just 300gms. It pairs with shorts or fast dry trousers and it is not intended to keep you completely dry. Its home is the high-performance race circuits of the Mediterranean, the Caribbean or (sometimes) the Solent (in summer anyway). It will provide the extra protection that you need to stay comfortable and keep your focus when the speed rises, and the spray starts flying.

“I FELL IN LOVE WITH THE GP AERO JACKET AND SHORTS. GREAT TO MOVE ABOUT IN, SUPER BREATHABLE, PERFECT WEIGHT FOR INSHORE RACING. IT’S GOING TO BE REALLY TOUGH TO HAND THEM BACK AFTER TESTING.”

Dave Lenz
North Sails Expert, Gosport, UK

GP AERO WATERPROOF JACKET

27M065

SIZE: S | M | L | XL | XXL

STRETCH BINDING AT NECK

ASYMMETRIC AQUAGUARD FRONT ZIP WITH STORM GUARD SYSTEM

CHEST POCKET WITH AQUAGUARD ZIP

SUPER CLEAN STRETCH AERO FIT TO MINIMISE DRAG AND SNAGGING

ALLOWS FOR MINIMAL MIDDLE LAYER GARMENTS

EXTERNAL HYPALON HANG LOOP

ARTICULATION PANELS AID STRETCH FABRIC TO GIVE EXCEPTIONAL FREEDOM OF MOVEMENT

STRETCH BINDING WRISTS



PHANTOM



RED



OCEAN BLUE

DURABILITY ★★☆☆☆
WATERPROOFING ★★☆☆☆
BREATHABILITY ★★★★★
WEIGHT (Medium) 290g



TW140S
STRETCH

More details on fabric technology on pages 10 - 18



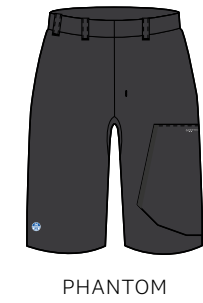
GP - PERFORMANCE



GP WATERPROOF SHORTS

27M565

SIZE: 30 | 32 | 34 | 36 | 38 | 40 | 42



- DURABILITY ★★☆☆☆
- WATERPROOFING ★★☆☆☆
- BREATHABILITY ★★☆☆☆
- WEIGHT (Large) 190g



GP FAST DRY SHORTS

27M505

SIZE: 30 | 32 | 34 | 36 | 38 | 40 | 42

- ADDITIONAL BELT LOOPS TO SECURE KNIFE/MULTITOOL
- ARTICULATION GUSSET FOR ENHANCED FREEDOM OF MOVEMENT
- SIDE OPENING THIGH POCKETS FOR EASY ACCESS WHEN SEATED
- 11" LEG LENGTH



BREATHABLE 4DL REINFORCED SEAT

HIGH STRETCH, FAST DRY, LIGHT WEIGHT FABRIC



GP FAST DRY TROUSERS

27M405

SIZE: 30 | 32 | 34 | 36 | 38 | 40 | 42

- ADDITIONAL BELT LOOPS TO SECURE KNIFE/MULTITOOL
- ARTICULATION GUSSET FOR ENHANCED FREEDOM OF MOVEMENT
- SIDE OPENING THIGH POCKETS FOR EASY ACCESS WHEN SEATED
- BREATHABLE 4DL REINFORCED KNEES



PHANTOM





WHITE

OCEAN BLUE

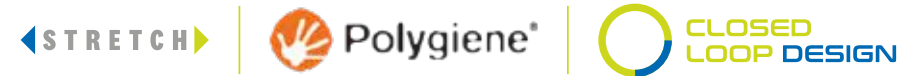
PHANTOM

GP SS SHIRT

27M290

SIZE: S | M | L | XL | XXL

- + High stretch, fast dry, silk weight fabric
- + 92% Recycled Polyester, 8% Elastane
- + Long lasting Polygiene anti bacterial treatment
- + Flat seams for enhanced comfort
- + Laser cut perforations for enhanced ventilation
- + UV 30+ protection



OCEAN BLUE

PHANTOM

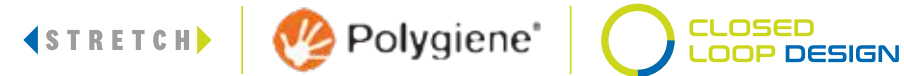
WHITE

GP LS SHIRT

27M295

SIZE: S | M | L | XL | XXL

- + High stretch, fast dry, silk weight fabric
- + 92% Recycled Polyester, 8% Elastane
- + Long lasting Polygiene anti bacterial treatment
- + Flat seams for enhanced comfort
- + Laser cut perforations for enhanced ventilation
- + UV 30+ protection
- + Thumb loops to prevent ride up when layering



CLOSING THE LOOP



“WE ARE AN INNOVATION AND TECHNOLOGY COMPANY; THIS IS WHERE WE CAN AND MUST SHOW LEADERSHIP.”

Planet Ocean is under threat. Runway global warming. Acidification. Coral bleaching. Unstoppable tides of plastic washing onto beaches, swirling in gyres and growing by eight million tonnes a year. The numbers are terrifying and intimidating. It seems hopeless, but change will only come one small step at a time. Alone we can do nothing. Together we have a chance.

We have supported the Ocean Family Foundation for many years now; with up to one percent of our turnover going to fund programmes that will support marine life and ocean health, to assist with research, education and plastic reduction. We are an innovation and technology company; this is where we can and must show leadership.

In a first for sailing, we have specifically designed products to be recycled at the end of their life. It's the first time that closed loop design has been achieved in our sport. All our polyester clothing can now be returned at the end of life and will be recycled into yarn for the manufacture of new fabrics.

It's just one of many initiatives from North Sails Apparel. In 2021, our packaging will only use recycled plastic, while we continue to work on completely plastic-free solutions for 2022. Our "Free the Sea" T-shirt collection is created from upcycled

yarns, 100% recycled cotton and PET bottles. While the spring 2020 collection introduced more recycled materials, organic fibres and low-impact manufacturing processes throughout. The GORE-TEX fabrics we use are bluesign® approved, and OEKO-TEX Standard 100 Class II certified.

Unfortunately, even with all this good work and good news, we have to be honest about some aspects of our clothing. The PTFE from which GORE-TEX is made is not recyclable, in fact it's one of the most stable products known to science. This is also one of the key reasons it's so good as foul weather gear and why it performs better than anything else out there! However, there are also some elements of its manufacture that are unfriendly to the environment. We are addressing some of these issues with new Durable Water Repellent (DWR) solutions (Pages 10-11).

We also strive to make the very best quality garments that we can. This is not single-use or fast fashion; these are clothes that will last. Our hope is that every set of North Sails Apparel foul weather gear will give great service for a decade or more. We know you'll love your North foulies and separation will be heart breaking. When you finally have to say goodbye, it'll only be because you have to...



“OUR POLYESTER CLOTHING CAN NOW BE RETURNED AT THE END OF LIFE AND WILL BE RECYCLED INTO YARN FOR THE MANUFACTURE OF NEW FABRICS.”

MID LAYER



The mid layer has an important but largely unglamorous job; to provide insulation. It is there to trap air that can be warmed to body temperature, reducing the chilling effect of the cold air swirling around the outer layer. We have two different weights; high loft and micro fleece to match the conditions.

There is no shell, or outer fabric on our mid layers. They are not designed as a dual purpose, windproof jacket for the moment when you peel off an outer layer jacket or smock. This is because a shell material on a mid layer significantly restricts breathability and creates a condensation surface next to the outer layer. It will get wet. In fact, it will get so wet that in some conditions it will look like the outer layer is leaking. And we really don't want that, so no shells on the mid layers.



PHANTOM

HIGH LOFT SMOCK 27M310

SIZE: S | M | L | XL | XXL

- + 280 gram/m² High Loft Fleece for maximum heat retention
- + 100% Polyester for fast drying and minimal absorption
- + Designed with no shell to prevent internal condensation build up
- + Offset front zip to reduce bulk around neck
- + Lycra bound hem and cuffs
- + Hypalon hang loop



PHANTOM

MICRO FLEECE SMOCK 27M370

SIZE: S | M | L | XL | XXL

- + 200 gram/m² Micro Fleece
- + Fast drying and minimal absorption
- + 27% recycled content
- + Designed with no shell to prevent internal condensation build up
- + Offset front zip to reduce bulk around neck
- + Lycra bound hem and cuffs
- + Hypalon hang loop



PHANTOM

MICRO FLEECE TROUSERS 27M470

SIZE: S | M | L | XL | XXL

- + 200 gram/m² Micro Fleece
- + Fast drying and minimal absorption
- + 27% recycled content
- + Designed with no shell to prevent internal condensation build up
- + Elasticated waist band
- + Lycra bound ankles



More details on fabric technology on pages 10 - 18

SAILOR JACKET



The Sailor Jacket takes us back to our roots and the greatness of Lowell North in his Olympic heyday. The original – not unlike the one worn by Lowell in the picture – was developed in the 1980s and was North’s first-ever clothing. It was designed as a comfortable replacement for the bulky foul weather jackets of that era. It also took inspiration from the aviator jackets of the early twentieth century – cropped in length with snug cuffs and waistband.

The latest Sailor Jacket combines this iconic look with the practicality that modern materials technology can bring; a breathable, splashproof and water repellent shell with a fleece-lined body. If there is one single garment that exemplifies the North Sails journey it is this classic Sailor Jacket.



THE SAILOR JACKET FLEECE LINED 27M095

SIZE: S | M | L | XL | XXL

CONTOURED COLLAR TO MINIMISE HEAT LOSS

HYPALON ZIP GARAGES

WINDPROOF, SHOWERPROOF
AND BREATHABLE SHELL FABRIC

YKK AQUAGUARD ZIPS

FLEECE LINED BODY AND
WADDED SLEEVE LINING

70% RECYCLED FABRIC CONTENT

SIDE POCKETS AND INTERNAL
SECURITY POCKET

KNITTED HEM AND CUFFS TO
ENSURE A SNUG FIT

HIDDEN LINING ZIP FOR
EASE OF BRANDING



TITANIUM



PHANTOM



NAVY



OCEAN BLUE



More details on fabric technology on pages 10 - 18



RACEWEAR - PERFORMANCE



SAILOR JACKET NET LINED
27M085

SIZE: S | M | L | XL | XXL



PHANTOM



TITANIUM



NAVY

WINDPROOF, SHOWERPROOF AND BREATHABLE SHELL FABRIC

75% RECYCLED FABRIC CONTENT

HYPALON ZIP GARAGES

KNITTED HEM AND CUFFS TO ENSURE A SNUG FIT



OCEAN BLUE

CONTOURED COLLAR

YKK AQUAGUARD ZIPS

MESH LINED BODY AND SMOOTH SLEEVE LINING

SIDE POCKETS AND INTERNAL SECURITY POCKET

HIDDEN LINING ZIP FOR EASE OF BRANDING



SAILOR JACKET NET LINED FW
27W085

SIZE: XS | S | M | L | XL



PHANTOM



TITANIUM



OCEAN BLUE

CONTOURED COLLAR

75% RECYCLED FABRIC CONTENT

WINDPROOF, SHOWERPROOF AND BREATHABLE SHELL FABRIC

HYPALON ZIP GARAGES

KNITTED HEM AND CUFFS TO ENSURE A SNUG FIT



NAVY

YKK AQUAGUARD ZIPS

MESH LINED BODY AND SMOOTH SLEEVE LINING

SIDE POCKETS AND INTERNAL SECURITY POCKET

HIDDEN LINING ZIP FOR EASE OF BRANDING



SOFTSHELL+



The soft shell is one of those go-to pieces of clothing that you will live in. Throw it on when you turn upwind for the last time with the sun getting low in the sky and a new chill in the air. Or throw it on when you head out for a meal at the end of a long day on the water. It will always be useful.

SoftShell+ is not a soft shell as many others interpret it though – a fleece with a finished face fabric. The SoftShell+ uses a bespoke, three-layer laminate that starts with a flat, knitted face and a DWR finish.

The next layer is a membrane that makes the fabric breathable and waterproof, while the inner face is a patterned microfleece designed to reduce weight, reduce water absorption, increase loft and air entrapment for extra warmth.

The result is a set of lightweight, showerproof, breathable and very comfortable garments. It's not just a soft shell, it's SoftShell+.



SOFTSHELL+ JACKET 27M035

SIZE: S | M | L | XL | XXL

CONTOURED COLLAR TO MINIMISE HEAT LOSS

YKK REVERSE COIL AQUAGUARD ZIP

BOUND CUFFS TO ENSURE A SNUG FIT



TITANIUM

4 WAY MECHANICAL STRETCH
FOR COMFORT AND EASE OF
MOVEMENT

WINDPROOF, SHOWERPROOF
AND BREATHABLE LAMINATED
SOFTSHELL+ FABRIC

TWIN SIDE POCKETS



PHANTOM



OCEAN BLUE



NAVY



SoftShell+

More details on fabric technology on pages 10 - 18





SOFTSHELL+ JACKET FW

27W035

SIZE: XS | S | M | L | XL

- + Windproof, showerproof and breathable laminated SoftShell+ fabric
- + 4 way mechanical stretch for comfort and ease of movement
- + Cut and sized for the female form - waisted with bust darts
- + Contoured collar to minimise heat loss
- + YKK reverse coil Aquaguard zip
- + Twin Side pockets
- + Bound cuffs to ensure a snug fit



SOFTSHELL+ VEST

27M038

SIZE: S | M | L | XL | XXL

- + Windproof, showerproof and breathable laminated SoftShell+ fabric
- + 4 way mechanical stretch for comfort and ease of movement
- + Contoured collar
- + YKK reverse coil Aquaguard zip
- + Twin Side pockets



SOFTSHELL+ VEST FW

27W038

SIZE: XS | S | M | L | XL

- + Windproof, showerproof and breathable laminated SoftShell+ fabric
- + 4 way mechanical stretch for comfort and ease of movement
- + Cut and sized for the female form - waisted with bust darts
- + Contoured collar
- + YKK reverse coil Aquaguard zip
- + Hypalon zip garages
- + Twin Side pockets



SOFTSHELL+ HOODY

27M300

SIZE: S | M | L | XL | XXL

- + The ultimate hoody
- + Windproof, showerproof and breathable laminated SoftShell+ fabric
- + 4 way mechanical stretch for comfort and ease of movement
- + Cut-away hood sides for peripheral vision
- + Twin entry pouch pocket with phone safe
- + Bound cuffs to ensure a snug fit
- + North Sails chest branding



SHIRTS



There is a shirt here for every moment of your sailing life – of everyone’s sailing life. We have the perfect crew shirt with the Fast Dry Polos. They use a fantastically comfortable fabric and have the brilliant Polygiene antibacterial treatment. Or there’s the Tech T in long and short sleeves if you are looking for the best value fast dry crew shirt out there.

Apart from rockin’ crew shirts, we have got something for the prize-giving, the crew dinner, for a superyacht crew uniform, or for corporate days. Whatever you need; if it’s a sailing shirt then we have got the answer.



CHAMBRAY



WHITE

PINPOINT OXFORD SHIRT 27M606

SIZE: S | M | L | XL | XXL | XXXL

- + Cotton oxford woven shirt
- + North Sails branded buttons
- + North Sails logo on left sleeve
- + 100% Cotton
- + 140grs/m²



NAVY



WHITE

POPLIN SHIRT 27M605

SIZE: S | M | L | XL | XXL | XXXL

- + Cotton poplin woven shirt with 2% elastane for comfort
- + North Sails branded buttons
- + North Sails logo on left sleeve
- + 98% Cotton / 2% Elastane
- + 115 grs/m²

◀ **STRETCH** ▶



WHITE



NAVY

POPLIN SHIRT FW 27W605

SIZE: XS | S | M | L | XL

- + Cotton poplin woven shirt with 2% elastane for comfort
- + North Sails branded buttons
- + North Sails logo on left sleeve
- + 98% Cotton / 2% Elastane
- + 115 grs/m²

◀ **STRETCH** ▶



SHIRTS - PERFORMANCE



NAVY



PHANTOM



WHITE



OCEAN BLUE

PIQUE POLO
27M105

SIZE: S | M | L | XL | XXL | XXXL

- + Cotton Pique Polo
- + North Sails branded buttons
- + North Sails logo on left sleeve
- + Side vents
- + 100% Cotton
- + 200g/m²



WHITE



PHANTOM



OCEAN BLUE



NAVY

PIQUE POLO FW
27W105

SIZE: XS | S | M | L | XL

- + Cotton Pique Polo with 5% elastane for comfort
- + North Sails branded buttons
- + North Sails logo on left sleeve
- + Side vents
- + 95% Cotton / 5% Elastane Pique
- + 200g/m²

◀STRETCH▶



PHANTOM



WHITE



OCEAN BLUE

JERSEY T
27M205

SIZE: S | M | L | XL | XXXL

- FEATURES**
- + Cotton jersey for comfort
 - + North Sails logo on left sleeve
 - + Side vents
 - + 100% Cotton Jersey
 - + 180g/m²



OCEAN BLUE



WHITE



PHANTOM

JERSEY T FW
27W205

SIZE: XS | S | M | L | XL

- FEATURES**
- + Cotton jersey for comfort
 - + North Sails logo on left sleeve
 - + Side vents
 - + 100% Cotton
 - + 180g/m²



LOGO JERSEY T
899098

SIZE: S | M | L | XL | XXL | XXXL

- + Cotton jersey T-Shirt
- + Large North Sails logo on front
- + 100% Cotton
- + 180g/m²



TACTEL POLO
27M104

SIZE: XS | S | M | L | XL | XXL | XXXL

- + Lightweight, fast dry, wicking & non-iron material
- + UV30+
- + Anti-bacterial treatment
- + Never fading colour
- + North Sails logo on left sleeve
- + 100% Polyamide
- + 195g/m²



TACTEL POLO FW
27W104

SIZE: XS | S | M | L | XL | XXL | XXXL

- + Lightweight, fast dry, wicking & non-iron material
- + UV30+
- + Anti-bacterial treatment
- + Never fading colour
- + North Sails logo on left sleeve
- + 100% Polyamide
- + 195g/m²



FAST DRY POLO
27M106

SIZE: S | M | L | XL | XXL | XXXL

- + UV 50+
- + Pique polo with Polygiene anti-bacterial treatment keeping you fresher for longer
- + Wicking providing extreme moisture management and odour control
- + 100% recycled polyester
- + 220g/m²



FAST DRY POLO FW
27W106

SIZE: XS | S | M | L | XL

- + UV 50+
- + Pique polo with Polygiene anti-bacterial treatment keeping you fresher for longer
- + Wicking providing extreme moisture management and odour control
- + 100% Recycled Polyester
- + 220g/m²





TECH T LONG SLEEVE

27M203

SIZE: S | M | L | XL | XXL | XXXL

- + Polyester jersey
- + UV30+
- + Anti-bacterial treatment
- + Lightweight quick drying & wicking for comfort
- + North Sails logo on left sleeve
- + 100% Polyester
- + 140g/m²



TECH T SHORT SLEEVE

27M202

SIZE: S | M | L | XL | XXL | XXXL

- + Polyester jersey
- + UV30+
- + Anti-bacterial treatment
- + Lightweight quick drying & wicking for comfort
- + North Sails logo on left sleeve
- + 100% Polyester
- + 140g/m²



PANTS & SHORTS



The North Fast Dry shorts will be the most comfortable sailing shorts that you have ever worn. We have chosen a four-way stretch fabric that's very lightweight and super quick to dry. Then we have gone to a whole new level with the design detail.

A couple of examples; we've added a spacious gusset so there's much less restriction when you are stepping up from the cockpit sole to the deck. We've also put the openings to the thigh pockets on the inside edge, so that you can get into them easily when you are hiking on the rail, and we have angled them upwards so they are still accessible when standing. Along with the super-stretchy, fast drying material these shorts exemplify the principle that this is clothing for sailors, by sailors.

“THE MOST COMFORTABLE SAILING SHORTS THAT I HAVE EVER WORN.”



PHANTOM



NAVY



TITANIUM

TRIMMERS FAST DRY SHORTS 27M510

SIZE: 30 | 32 | 34 | 36 | 38 | 40 | 42

- + Fast dry stretch wicking fabric
- + UV 40+ protection
- + Side pockets & two thigh side entry pockets so usable when sat on the rail
- + Belt loops
- + Zip fly with button closure
- + 88% Nylon / 12% Spandex

◀STRETCH▶



NAVY



TITANIUM



PHANTOM

TRIMMERS FAST DRY SHORTS FW 27W510

SIZE: XS | S | M | L | XL

- + Fast dry stretch wicking fabric
- + UV 40+ protection
- + Side pockets & two thigh side entry pockets so usable when sat on the rail
- + Belt loops
- + Zip fly with button closure
- + 88% Nylon / 12% Spandex

◀STRETCH▶



TRIMMERS FAST DRY TROUSERS

SIZE: 30 | 32 | 34 | 36 | 38 | 40 | 42

- + Fast dry stretch wicking fabric
- + UV 40+ protection
- + Side pockets & two thigh side entry pockets so usable when sat on the rail
- + Belt loops
- + Zip fly with button closure
- + 88% Nylon / 12% Spandex

◀ STRETCH ▶



TRIMMERS FAST DRY TROUSERS FW

SIZE: XS | S | M | L | XL

- + Fast dry stretch wicking fabric
- + UV 40+ protection
- + Side pockets & two thigh side entry pockets so usable when sat on the rail
- + Belt loops
- + Zip fly with button closure
- + 88% Nylon / 12% Spandex

◀ STRETCH ▶





NAVY



TITANIUM



PHANTOM

TRIMMERS FAST DRY SKORT

27W506

SIZE: XS | S | M | L | XL

- + Made from the same fast dry stretch fabric as our famous Trimmers shorts
- + Fast dry stretch wicking fabric
- + UV 40+ protection
- + Invisible zipped pocket on waistband
- + 88% Nylon / 12% Spandex

◀STRETCH▶



OCEAN BLUE



PHANTOM

SWIM SHORTS

27M506

SIZE: 30 | 32 | 34 | 36 | 38 | 40 | 42

- + Elasticated and drawstring waistband
- + Side pockets & two thigh side entry pockets so usable when sat on the rail
- + Built in mesh brief for support and comfort
- + Laser cut drainage holes on back pocket
- + 54% Cotton / 46% Polyamide

◀STRETCH▶



BLACK



MARINE BLUE



DK GREY



BEIGE

CHINOS

27M400

SIZE: 32 | 34 | 36 | 38 | 40 | 42

- + Polyester cotton gaberdine with colour fading & abrasion resistance
- + Button and zipped fly
- + Two pockets
- + Belt loops
- + 65% Polyester / 35% cotton



BEIGE



MARINE BLUE



DK GREY



BEIGE

CHINO SHORTS

27M501

SIZE: 32 | 34 | 36 | 38 | 40 | 42

- + Polyester cotton gaberdine with colour fading & abrasion resistance
- + Button and zipped fly
- + Two pockets
- + Belt loops
- + 65% Polyester / 35% cotton



MARINE BLUE



BEIGE

STRETCH SHORTS FW

27W500

SIZE: XS | S | M | L | XL

- + Lightweight, Quick Dry 4-way stretch
- + Belt loops and snap closure waist
- + Hand and back pockets
- + North Sail logo on right thigh
- + 86% Polyamide 14% Polyurethane

◀STRETCH▶

SUPPORTING THE SPORT

At North Sails we love to sail, and we love to race, so it's hardly surprising that we love regattas. We enjoy an association with some of our favourite events and we're particularly proud to be the Official Clothing Partner of the 36th America's Cup, Presented by Prada.

The America's Cup is one of the sport's elite events and North Sails have been used by every winner of the America's Cup since 1988. On this occasion we have launched a special collection of clothing crafted entirely from recycled fabrics, all named after the famous trophy's most important locations.

We also support three of the Mediterranean's most wonderful regattas; the Real Club Nautico de Palma's Copa del Rey, Les Voiles de Saint Tropez, and the 151 Miglia, which is a glorious 151 mile race from Livorno to Punta Ala via Giraglia and the islands of the Tuscan Archipelago. All three of these fantastic events allow us to connect with a wide range of our customers and we look forward to seeing you there.



**WOULD YOU EXPECT
ANYTHING OTHER THAN THE
HIGHEST PERFORMANCE
AND PRODUCT INNOVATION
FROM THE COMPANY WHOSE
SAILS HAVE WON EVERY
AMERICA'S CUP SINCE 1987?**



LUGGAGE



Durability – that’s what we need from luggage first and foremost. It’s going to take a beating getting dragged onto and off boats and thrown around down below. It also needs to be lightweight; no one wants to be lifting extra weight up onto the deck, or onto a luggage rack in a plane or train for that matter. And you certainly don’t want it adding unnecessary weight to the boat once it’s empty. Finally, it needs to be easy to pack – after all, that’s what luggage is for... and we’ve got it all covered.



CREW BAG 70L 27M770

SIZE: ONE SIZE - 70L

- + Large 70cm X 35cm X 35cm 70 litre duffle bag
- + Waterproof fabric
- + North Sails logo on bag end
- + Zipped pocket at one end of bag to secure wet or important items
- + Durable straps with shoulder padding
- + Heavy duty zips
- + 60% Polyester / 40% PVC



PHANTOM





PHANTOM

CREW BAG 40L

27M740

SIZE: ONE SIZE - 40L

- + 40 Litre duffle bag 60cm X 30cm x 30cm
- + Waterproof fabric
- + North Sails logo on bag end
- + Zipped pocket at one end of bag to secure wet or important items
- + Durable straps with shoulder padding
- + Heavy duty zips
- + 60% Polyester / 40% PVC



PHANTOM

CREW BAG 20L

27M721

SIZE: ONE SIZE - 20L

- + 20 Litre duffle bag 50cm X 25cm x 25cm
- + Waterproof fabric
- + North Sails logo on bag end
- + Durable straps with shoulder padding
- + Heavy duty zips
- + 60% Polyester / 40% PVC



PHANTOM

CREW BAG 10L

27M711

SIZE: ONE SIZE - 10L

- + 10 Litre duffle bag 40cm X 20cm x 20cm
- + Waterproof fabric
- + North Sails logo on bag end
- + Durable straps with shoulder padding
- + Heavy duty zips
- + 60% Polyester / 40% PVC



PHANTOM

WASH BAG

27M712

SIZE: ONE SIZE

- + Waterproof fabric wash bag
- + Fold away travel hook for hanging up
- + Zipped internal mesh pocket
- + 25cm X 10cm X 10cm
- + 60% Polyester / 40% PVC



PHANTOM

LAPTOP CASE

27M714

SIZE: ONE SIZE

- + Padded zipped lap top case
- + North Sails branded
- + 33cm X 23cm X 2cm
- + 70% Styrene Butadiene Rubber / 30% Polyester





PHANTOM



PHANTOM



PHANTOM

NEW 30L DRY BAG
27M725

SIZE: ONE SIZE

- + 30l dry backpack
- + Top grab handle
- + Rollover, watertight top secured with buckles

NEW 30L DRY BACK PACK
27M724

SIZE: ONE SIZE

- + 30l dry backpack
- + Rollover, watertight top secured with buckles
- + Padded shoulder straps
- + Sternum strap for maximum comfort
- + Waist strap
- + Zipped external pocket

BACK PACK 22L
27M722

SIZE: ONE SIZE

- + 22L Backpack
- + Internal divider pocket to keep items sperate
- + Padded laptop sleeve
- + Mesh lined zipped compartment
- + Padded back panel with spine channel for wicking and ventilation
- + Two side water bottle pockets
- + Sternum strap for maximum comfort
- + Front side 90% Polyester 10% PVC
- + Back Side 70% Ethylene vinyl acetate 30% Polyester



ACCESSORIES



TITANIUM

NEW FAST DRY BRIMMED HAT 27M715

SIZE: S | M | L | XL

- + Light weight fast dry fabric
- + Drawstring adjuster to secure hat
- + Optional brim popper to turn up brim
- + 100% Polyester



OCEAN BLUE

PHANTOM

TITANIUM

NAVY

COTTON CAP 27M703

SIZE: ONE SIZE - ADJUSTABLE

- + Cotton Twill cap for comfort
- + Adjustable fit
- + Retainer clip
- + North Sails logo on centre front
- + 100% Cotton



| XXL | XXXL |

SIZE: ONE SIZE - ADJUSTABLE

- + Designed with our logo on the side so you can put the most important logo - that of your boat - on the front.
- + Cotton Twill cap for comfort
- + Adjustable fit
- + Retainer clip
- + North Sails logo on centre back
- + 100% Cotton



SIZE: ONE SIZE - ADJUSTABLE

- + 100% Polyester quick dry cap
- + Adjustable fit
- + Retainer clip
- + North Sails logo on centre front
- + 100% Polyester



SIZE: ONE SIZE - ADJUSTABLE

- + 100% Polyester quick dry cap
- + Designed with our logo on the side so you can put the most important logo - that of your boat - on the front.
- + Adjustable fit
- + Retainer clip
- + North Sails logo on centre back
- + 100% Polyester



BEANIE
27M709

SIZE: ONE SIZE

- + Knitted short beanie with fleece internal band for comfort and warmth
- + North Sail logo on front
- + 50% wool 50% acrylic



BELT
27M730

SIZE: 30 - 42 - ADJUSTABLE

- ✚ Adjustable fit
- ✚ Fastens with a D-ring metal buckle for comfort and convenience
- ✚ Robust Technical Jacquard woven with contrasting North Sails branding
- ✚ 100% Polyester

CUSTOM GEAR



North Sails apparel is designed to keep you warm and dry, not to advertise our products. We have kept our logos discrete, so that you can customise your gear with your own branding if you choose. It might feel like a detail, but it's not if you're looking to fit out your sailors and give them a sense of shared identity – to make them a crew.

The garments have been designed so that custom logos can be quickly and easily applied; a service offered by us as well as many of our partners around the world. So there is plenty of space on the left chest, the right arm and the centre of the back.

And while it might seem obvious – needles and waterproofness go together like salt water and electronics – we would really prefer it if you printed the logos on, rather than embroidered them.



Sizing is always an interesting subject to pin down accurately. Much is dependant on the fit preference of the customer – do you want wear it loose or tight fitting – and we have to design for “average” sizes, so those people who don't quite fit the norm - a 195cm man who weighs just 85kg for example – is going to have to make a few compromises.

Below we have given the measurement criteria we use for garment design and fitting. If you fit within all 4 criteria you can be pretty confident in the sizing recommendation – for example if you're a 178cm man with a 102cm chest, a 90cm waist and weigh around 88kg you can be confident our size Large is going to fit you. If you fall outside of more than 1 of the criteria we really recommend you visit a store and check to see which size you're most comfortable in.

SIZING

MEN'S SIZING

	HEIGHT	CHEST	WAIST	WEIGHT
S	5'5"-5'7" 165-170cm	36"-38" 90-96cm	32" 81cm	8.5st-10.5st 60-70kg
M	5'7"-5'9" 170-175cm	38"-40" 96-101cm	34" 86cm	10.5st-12.5st 70-80kg
L	5'9"-5'11" 175-180cm	40"-42" 101-107cm	36" 91cm	12.5st-14st 80-90kg
XL	5'11"-6'1" 180-185cm	42"-44" 107-112cm	38" 96cm	14st-16st 90-100kg
XXL	6'1"-6'3" 185-190cm	44"-46" 112-117cm	40" 101cm	16st-17.5st 100-110kg
XXXL	6'3"-6'5" 190-195cm	46"-48" 117-122cm	42" 106cm	17.5st-19st 110-120kg

WOMEN'S SIZING

	UK	Height	Bust	Waist	Hips
XS	8	5'2"-5'4" 158-163cm	32"-34" 80-86cm	26" 66cm	35"-37" 89-94cm
S	10	5'4"-5'6" 163-168cm	34"-36" 86-90cm	28" 71cm	37"-39" 94-99cm
M	12	5'6"-5'8" 168-173cm	36"-38" 90-96cm	30" 76cm	39"-41" 99-104cm
L	14	5'8"-5'10" 173-178cm	38"-40" 96-101cm	32" 81cm	41"-43" 104-109cm
XL	16	5'10"-6'0" 178-183cm	40"-42" 101-107cm	34" 86cm	43"-45" 109-114cm



PERFORMANCE

TIGHTWEAVE™



GORE-TEX®
PRO

DuraSeal



www.northsails.com/PERFORMANCE