

WARRANTY
10
YEAR



BVCert. 6010761



V-ROYALE-L

Maturing cabinet
Premium pack

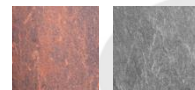
Sliding shelf



ACMSR

GENERAL FEATURES

	Full Glass door
Gross weight packaged (kg)*	340
Empty net weight (kg)	250
Dimensions H x W x D (mm)	1847 x 880 x 617 (rear stop excluded)
Dimensions packaged (mm)	2000 x 970 x 700
Colors / Finishes	Red Earth, Mineral Grey



TECHNICAL FEATURES

REGULATION

- Temperature and hygrometry : 12°C, 70%
- LED screen with sensitive keys
- Electronic internal display and settings
- Temperature display, non adjustable
- Hygrometry display, non adjustable
- Alarms in case of dysfunction (open door, sensor fault, temperature dysfunction, hygrometry dysfunction, need to fill the humidity tank, need to replace charcoal filter)
- Automatic defrost
- Frost protection thermostat (double protection)

HOT – COLD – INSULATION TECHNOLOGIES

- | | |
|----------------------------|--|
| Cold production: | <ul style="list-style-type: none"> • Ventilated • Compressor R600a/R134a (Korea) |
| Cords: | <ul style="list-style-type: none"> • CE/UK/JA/AU/CH/CN/US/C6 |
| Heat production: | <ul style="list-style-type: none"> • Heating element • Automatic |
| Heat release: | <ul style="list-style-type: none"> • 45W heating element |
| Inner material: | <ul style="list-style-type: none"> • Aluminum |
| Exterior coating material: | <ul style="list-style-type: none"> • HPL panel (High pressure laminated) |
| Insulation type: | <ul style="list-style-type: none"> • Injected polyurethane foam (59mm) |

EQUIPMENT & ACCESSORIES

EQUIPMENT

- On/Off/Standby key
- Triple glazed and anti-UV Full Glass door. Not reversible. Right or left opening > Choice when ordering
- Inner lighting: ambient lighting by 4 LED under each shelf and 2 LED under the control panel (3 options: permanent, open door, disabled). 3 levels of light intensity adjustment
- Active charcoal filter 150x150 mm
- 4 adjustable shock-absorbing feet + 4 embellishments
- Autonomous hygrometry regulation tank - « Hydrocontrol System ». Patented system
- Handle integrated in the door profile
- Condensate discharge pipe

ACCESSORIES

- 12 sliding shelves with black tinted ash front
- Sliding shelves equipped with a soft close device
- Total capacity: 106 or 124 bottles**
- Sliding shelf capacity: up to 9 bottles
- 8 mains du Sommelier at the bottom of the cabinet
- 6 removable bottles identifiers per sliding shelf and 1 erasable felt-tip marker
- 1 microfiber cloth
- 1 EuroCave key ring

ENERGY EFFICIENCY & CONSUMPTION

Cords	230V-50Hz	115V-60Hz	Volume utile (litres)
Type of door	Full Glass	Full Glass	
Energy efficiency class	A	-	436
Annual energy consumption AEc*** (Kwh/year)	150	212	
Sound emission (dB(A))	37	37	

* Equipped cellar weight **106 bottles: 86 traditional Bordeaux bottles + 20 Magnums / 124 bottles: 122 traditional Bordeaux bottles + 2 Magnums

*** Calculation based on the result obtained over 24 hrs in standard conditions (25°C / 77°F)