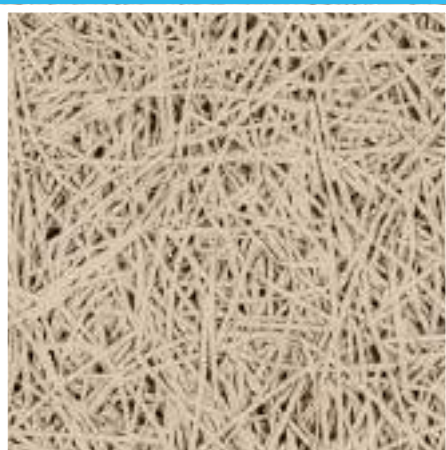


HERADESIGN[®] Superfine

HERADESIGN[®] Superfine is a single layer magnesite bonded wood wool acoustic ceiling and wall panel (fibre width 1mm).

- Fine surface texture
- Building biology recommended
- Cradle to Cradle Certified[®] Gold for white and natural colours only



System	A2.1, A2.2	B2.1, B2.2				C2.1	S2.1							
Edge details	VK-09	GK	AK-02/5	AK-03	SK-04	SY-02								
	VK-10	AK-00	AK-02/10		SK-05									
	VK-10/5	AK-01	AK-02/20		SK-06									
Dimensions [mm]	600 x 600, 625 x 625, 1200 x 600, 1250 x 625, additional sizes on request.													
Thickness [mm]	15		25		35									
Weight [kg/m ²]	7.8		12.6		16.5									
Sound absorption	Thickness [mm]	TCH [mm]	HERADESIGN Acoustic lining [mm]	[kg/m ³]	Frequencies [Hz], α_w					Entire range		Class		
	25	55	0	0	125	250	500	1000	2000	4000	NRC	α_w		
	25	55	25	90	0.10	0.20	0.45	0.70	0.55	0.75	0.50	0.45 (MH)		D
	25	200	0	0	0.25	0.65	0.70	0.60	0.75	0.90	0.70	0.70 (H)		C
	25	200	25	90	0.45	0.95	1.00	1.00	0.95	1.00	1.00	1.00		A
Sound Attenuation	D _{n,f,w} up to 30 dB according to DIN EN ISO 10848-2:2006													
Ball impact safety	Ball impact resistant according to DIN 18 032 /part 3 or class 1A according to EN 13964 annex D													
	Ceiling panelling system B2.1, B2.2, C2.1			Wall panelling system B2.1, B2.2, S2.1										
Fire resistance class	EI 30 (a-b)													
Fire reaction	Euroclass B-s1,d0													
Thermal conductivity	$\lambda = 0.09$ W/mK according to EN 12667													
Humidity resistance	Suitable for rooms with a constant humidity of up to 90%. For applications where there is a constant relative air humidity in excess of 80%, expert advice for building physics is recommended.													
Cleanability														
Sustainability														
Area of application	A decorative and acoustically effective suspended ceiling and wall panel for use in interior spaces as well as roofed outdoor areas that are not directly exposed to environmental influences such as rain or pollutants.													
Installation	The installation of HERADESIGN® acoustic panels should take place during the last phase of the job, and in temperature and humidity controlled conditions. All building activities which create dust must be completed before the start of installation. Store the panels flat and protect against moisture and dirt. The packaging does not protect the products against rain. HERADESIGN® products should be installed in strict accordance with Knauf Ceiling Solutions installation and storage guidelines.													
Designation code	WW-EN 13168-L4-W2-T2-S2-P2-CI3													
Special information	<ul style="list-style-type: none"> Manufacturing tolerances in nominal dimensions: L4, W2, T2: ± 1 mm, for lengths > 1250mm L4: ± 2mm Maximum changes in dimension in standard climate 23°C/50% relative humidity: ± 1% 													
Colours	White similar to RAL 9010	Beige Natural tone 13	Pastel colours	Solid colours	Metallic colours	Special colours								
	●	●	●	●	●	●								
	<ul style="list-style-type: none"> The unique and natural structure of HERADESIGN® wood wool makes it an ideal solution for projects requiring creative colour schemes. Choose from an almost unlimited range of popular RAL and NCS colour systems. Deviations in colour and visual appearance may occur due to the rough fibre and panel surface.. 													

Products may vary from country to country. Please contact your local sales representative. For further information and legal notice, please visit our website.