



WORKSHOP EQUIPMENT
RAILWAY

WILLBRANDT - your one-stop-shop for workshop equipment!



WILLBRANDT.
MORE THAN 25 YEARS IN THE NORDICS,
125 YEARS IN EUROPE.

WILLBRANDT supplies a wide range of products and components for railway. In cooperation with our partners, we have an extensive program, which enables us to supply most of the products needed in the market. Our product specialists have extensive knowledge of the unique requirements for the various trains and bogies and are happy to assist and advise you with any inquiries. We are certified according to ISO 9001 and approved by TransQ.





BERTOLOTTI RAIL is a company committed to design, building and implementing of equipment and tooling for railway depots, metro and tramways. They provide a safe, performing and proven working environment.



The main products are:

- Bogie Press Stands
- Bogie and Axle Drops
- Lifting and Handling Systems
- Transfer Tables
- Special Equipment
- Tailored solutions



BERTOLOTTI RAIL has a certified management system that complies with the following standards:

- ISO 9001 for Quality
- ISO 14001 for Environment
- ISO 45001 for Safety





NITEQ specializes in design and supply of railway transport equipment.

Based in The Netherlands, 45 minutes from Amsterdam airport, Niteq supplies to:

- Europe
- Asia
- Middle East
- South Africa
- North America
- South America
- Australia



All vehicles feature:

- Highly reliable railway quality
- Safety first
- Compact and easy to operate
- Maintenance by local engineers
- High efficiency with AC motor technique
- Interlock with other equipment
- Long life time



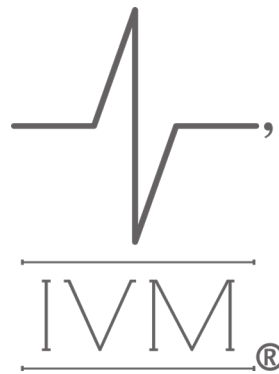
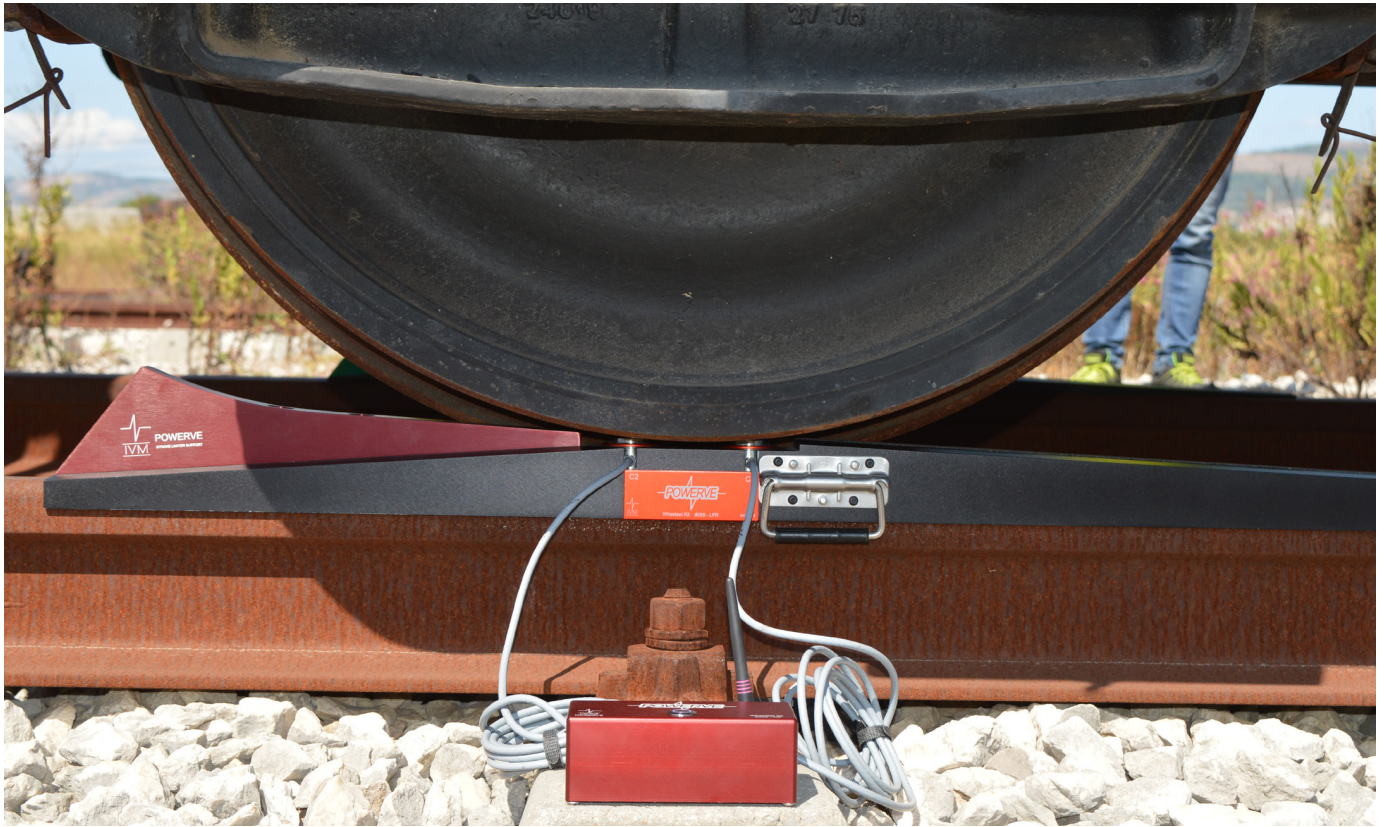
Niteq offers:

- ISO 9001-2015
- Sales
- Input check=risks
- Engineering
- Output check=no risks
- Production
- Factory test (FAT)
- Transport, commissioning, training
- Final test (SAT)



NITEQ started in 1991 and nowadays they mostly create battery and hybrid machines. Since 1997 they are exporting machines all over the world.





IVM POWERVE® is the ideal solution for:

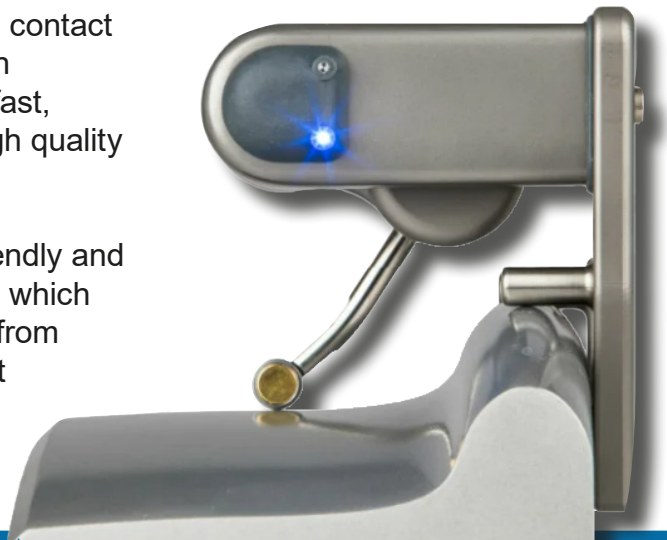
- Testing & Commissioning of new, maintained or modified rolling stock, compliant with the EN 15654-2 and EN 50215
- Workshop or in-field maintenance
- Suspension load adjustment to equalize vertical forces on wheels (leveling)
- Reducing derailment risks, especially on twisted track and at low speed





The Greenwood MiniProf BT system is an excellent full contact measurement system with bluetooth connection for fast, reliable and extremely high quality profile measurements.

Combined with a user-friendly and flexible software package which can be easily configured from basic use to in-depth post measurement analysis.





GEMINIS
MAHER HOLDING

The GEMINIS equipment in our portfolio is specifically designed for machining and reprofiling axles and performing wheel hub borings. In addition, the new equipment integrates an innovative factor such as eco-design, a trend certified by ISO 14001 and ISO 14006 standards and which introduces the environment as a complementary criteria the development of products.



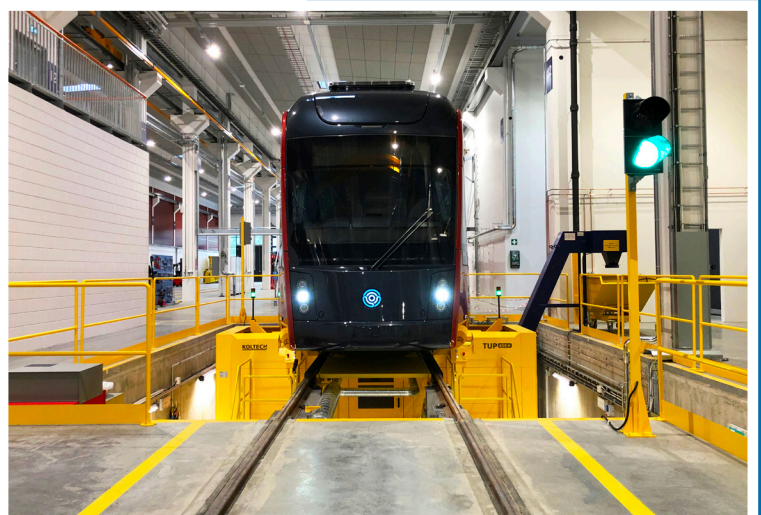


KOLTECH

KOLTECH excels in design and production of special purpose CNC machines and technological devices for the needs of maintenance of rail vehicles in depots and workshops and depots.

They supply a complete range of above and under floor wheel lathes for all types of rolling stock.

They also offer diagnostic stations for measurement and monitoring of wheelsets parameters providing on-track data in realtime.





Irmie produces equipment, systems and test benches to carry out tests of rolling stock and its components.

The company meets the requirements for rolling stock testing, during both the production and maintenance phases.

The reduction gear test bench can be realized in two configurations: for reduction gear testing under no load or in load conditions.

This is normally used for operational testing of the room (with or without bushes), predictive maintenance or for after maintenance testing.

During tests, measurements are taken via a system of external sensors or acquiring signals from internal sensors.

The reduction gear can be tested up to the maximum rotation speed.

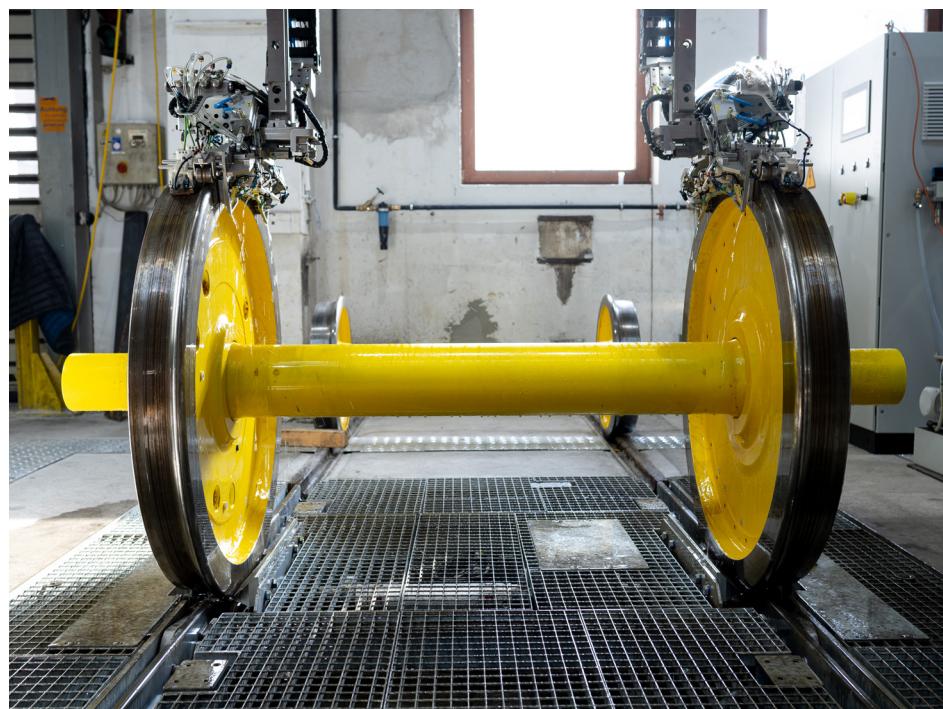
Besides gear test benches, Irmie provides dynamic bogie test benches, pantograph testers, power solutions and much more.





bip technology provides:

- Measuring of wheelsets, wheels and axles
- Ultrasonic flaw detection of axles, wheelsets, in both underfloor, stationary and mobile solutions
- Surface treatment of wheelsets, cleaning, painting, impact protection and coating
- Automation of processes in both light and heavy maintenance operations



Aquafrisch



AQUAFRISCH provides reliable and innovative solutions for rolling stock cleaning and maintenance:

- Mobile and fixed washing of rolling stock
- Modular washing system for trains and locomotives

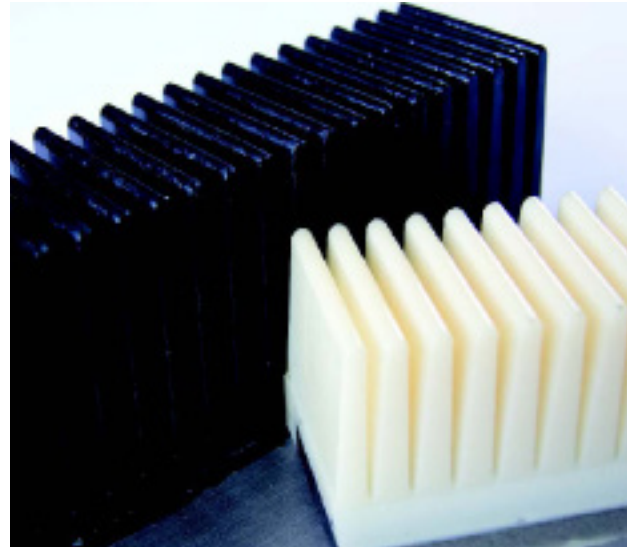
- Fixed and mobile CET Systems for all toilet waste and water suction
- Fixed and mobile sand distribution systems



GAP-Filler

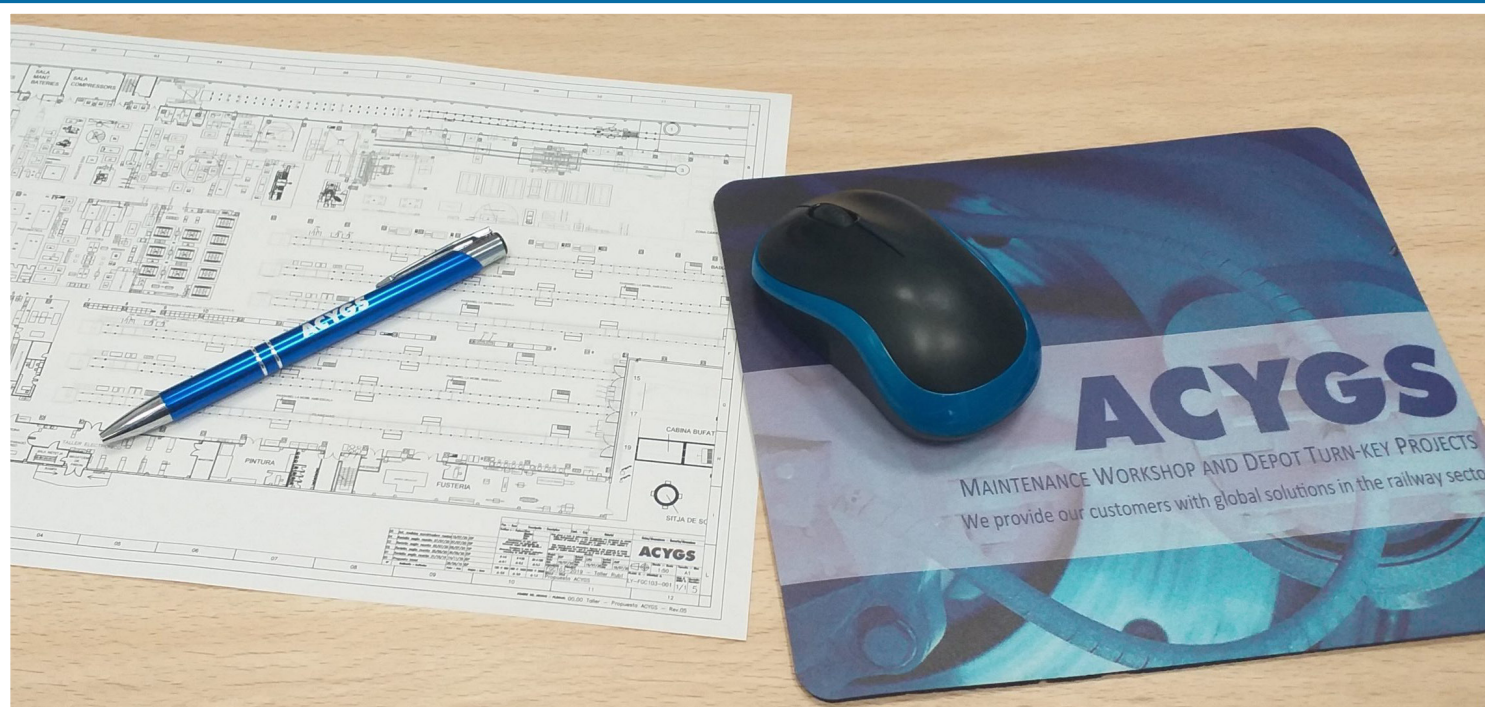
WILLBRANDT GAP-filler is the solution for barrier-free entry and exit at platform edges. GAP fillers make an important contribution to barrier-free development in local public transport.

Due to their special shape, they can support passengers with walking stick, wheelchairs and more. This makes it easier for people with reduced mobility to travel on trains. In the event of a possible contact with a train, the flexible slates move to the sides.



- Service-free and low-wear
- Easy assembly and disassembly
- Robust and hard-wearing
- Different widths to bridge almost any gap
- Easy to adapt to structural conditions (e.g., listed buildings)
- Ideal for curved platforms
- No barrier in the clearance gauge
- Fire protection tested
- Low abrasion
- Different colour variants available



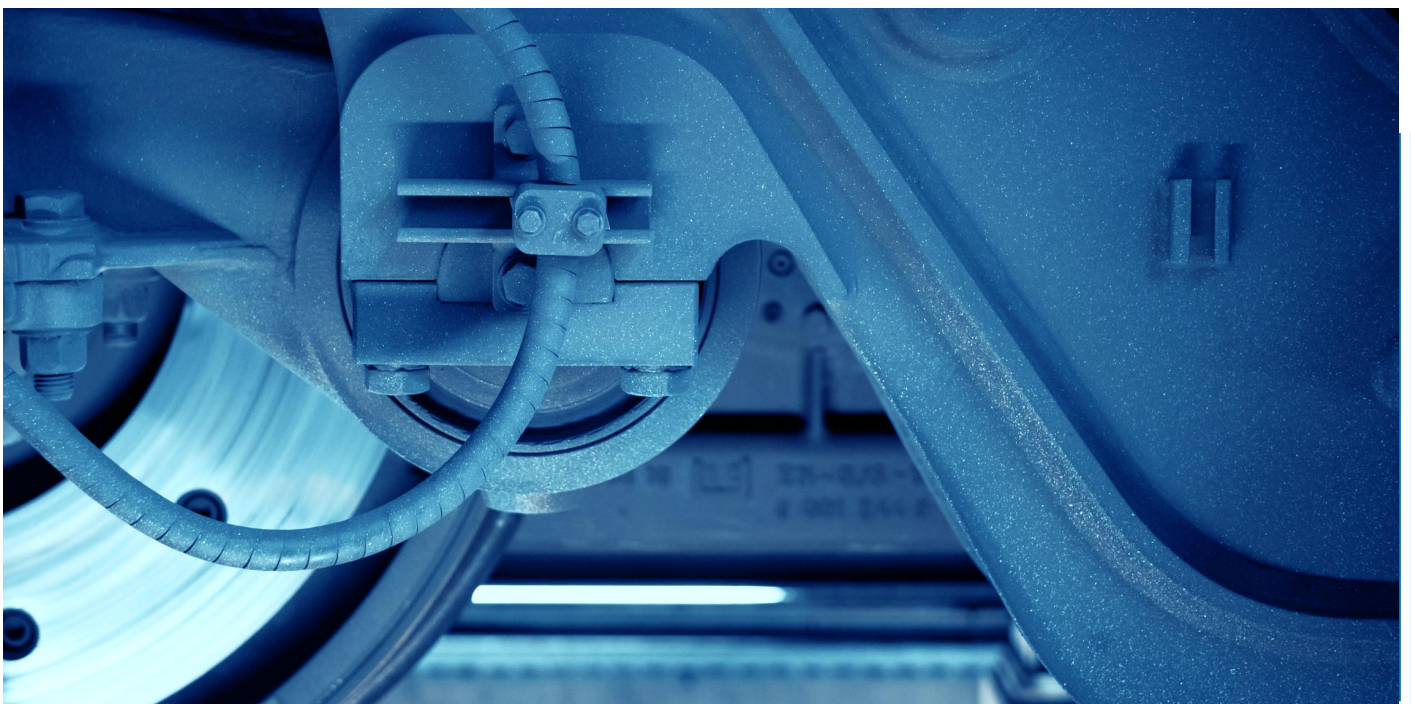


ACYGS

ACYGS offers tailored railway engineering services for its clients, adapting to the needs of their workshops and providing global solutions that build on its long experience in the maintenance of railways.

Based on the rolling stock to be maintained, the level of maintenance and the tasks to be carried out in the workshop, a study of the drawings and lists of equipment received is conducted to see their suitability.

The workflows and components will be optimized for the depot.






Do not hesitate to contact:



Danny Grønbech
Area Manager - Nordics and Baltics
+45 60 22 56 87 - dgr@willbrandt.dk

 +45 56 87 01 64

 info@willbrandt.dk

 www.willbrandt.dk

 www.willbrandt.se

WILLBRANDT
Gummiteknik A/S
Grønlandsgade 9,
DK-4690 Haslev. Denmark

 www.willbrandt.solutions

YOUR INDUSTRY PARTNER:
WILLBRANDT GUMMITEKNIK A/S
is a total supplier for other
industries than the railway
sector:

GENERAL INDUSTRY:
We are one of Europe's leading suppliers of
rubber products for industry, whether it's
compensators, profiles, molded parts, hoses,
gaskets or seals.

DEFENSE & NAVY:
WILLBRANDT is a well known supplier of
elastic suspensions and moulded parts to the
defense and navy industry. We offer
vibration- and shock absorbers which we
have been used successfully for extreme
applications within the above industries.

MARINE & SHIPYARD:
The maritime world is closely connected to
the history of WILLBRANDT. The company
started servicing the harbour and shipyards in
Hamburg and we offer a broad package of
solutions.

HARBOUR:
WILLBRANDT has many years of
experience as a supplier of fencing
systems and sealing profiles for ships and
harbors. Our solutions are designed and
manufactured in accordance with the
regulations of the EAU 2004 and PIANC
2002.

WINTER SERVICES:
For decades WILLBRANDT has been well
known as a reliable supplier of wear parts
and we are always ready when winter sets in.
To ensure a swift delivery, all common sizes
in rubber, PUR and steel, are on stock at our
facilities in Denmark.

AIRPORT:
The use of efficient and high-quality wear
products saves money, time and protects
the environment by reducing the use of grit.
Optimal adjustment to specific surfaces is a
precondition for residue-free snow clearing.

WIND INDUSTRY:
WILLBRANDT cover various elastomers,
including rubber and polyurethane, offering
our customers a 'One stop' solution. Our
logistic solutions combined with large stock,
ensures a swift delivery.