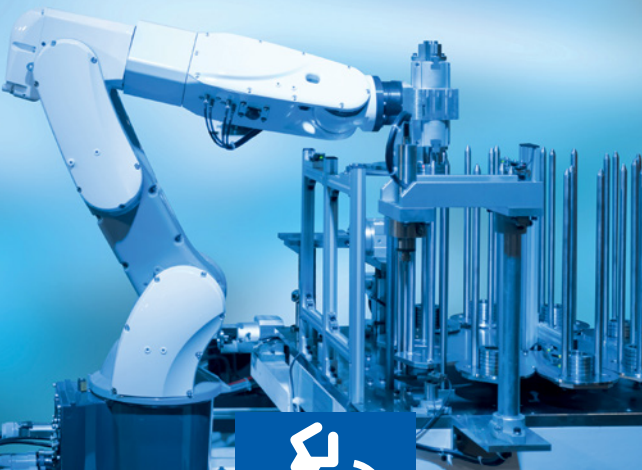


The fourth industrial revolution boosts smart manufacturing while enhancing efficiency and competitiveness. Digicom lives in this environment.



Thermo Access TC-8  
Code 8E4618

## Remote Temperature monitoring

- **Thermal camera for remote temperature measurement**
- **LDC 8" screen 1280x800 resolution**
- **Accuracy +/- 0.3 ° C**
- **2M binocular video sensor**
- **Mask presence recognition**
- **Face recognition (Face ID)**
- **Welcome voice message**
- **Voice message of temperature OK/Fail**
- **Ease of use in Cloud**
- **Android operating system**

COVID-19 emergency requires the maximum attention in **monitoring the body temperature** of people entering companies, offices, schools, subways and stations.

Digicom, always ready with technological solutions, has created the Thermo Access Line to monitor the temperature with remote thermographic systems that respect the person, guaranteeing the "comfort" distance.

Thermo Access TC-8 is a **termographic scanner** able to detect the body temperature by facial scanning with an excellent degree of precision at distance (from 0,5 to 1,5 meters).

Furthermore TC-8 can also detect and signal the worn mask condition.

TC-8 has a relay output to authorize the **opening of doors and turnstiles**.

It is also equipped with facial recognition (Face-ID) with a binocular sensor system for a better precision.

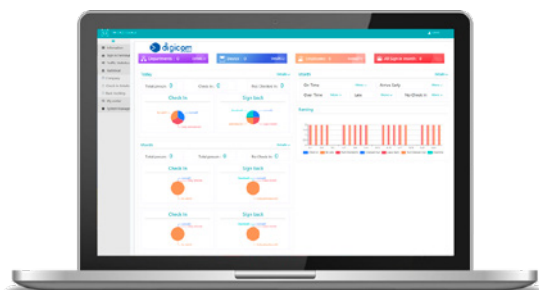
Thanks to the use of algorithms for facial recognition and of the thermal sensor TC-8 is able to detect the temperature analyzing specific facial areas.

TC-8 plays back audio messages to inform about the correct temperature or about eventual anomalies.

TC-8 has multiple interfaces for use after Phase 2 and to be integrated into access control as it is equipped with a double Wiegand interface (typical of access control system).

Thermo Access TC-8 Digicom is the only one in **Cloud** that allows you to always have the situation controlled. It's based on the **Android** platform for which the thermo scanner application is managed as an APP. In this way it is also possible to manage other applications in an easier and faster way.

*The product is not a medical device. It is not to be used for medical purposes or for diagnosis, prevention, monitoring, forecasting, prognosis, treatment or mitigation of diseases. The information provided by the device should not be used to determine people's health or to take any decisions about it. The product should not be used as a substitute for a medically certified thermometer.*



8E4618 THERMO ACCESS TC-8 07/10/2020

Tutte le altre marche, prodotti e marchi appartengono ai loro rispettivi proprietari. Il contenuto di questo depliant può essere modificato senza preavviso.

 **digicom**  
B810 GROUP

A **range of accessories** is available for the various installations (desktop or floor) with different heights.

The supports equipped with passage for internal cables and LED bar make Thermo Access TC-8 ideal even for installations in restaurants, hotels.

#### PACKAGE CONTENT

- 8E4618 Thermo Access TC-8
- Power supply 110-240 Vac - 12VDC / 3A
- Quick Guide

#### ACCESSORIES (not included in the package)

- 8E4621 Black desktop support wired with light
- 8E4624 Inox desktop support Basic
- 8E4619 Floor support wired with light, Height 110 cm
- 8E4623 Inox floor support Basic, Height 110 cm
- 8E4625 Inox floor support, Height 125 cm



8E4621



8E4624



8E4619



8E4623



8E4625

## TECHNICAL FEATURES

- Thermo Scanner
- 2M binocular camera sensor
- Distance: 0,5-1,5 meters (ideal 0,7-1 m.)
- Precision: +/- 0,3°C
- IR illuminator
- Facial recognition (Face ID)
- Single and multiple facial recognition
- 8" LCD screen
- Screen resolution 1280x800
- Temperature detection
- Worn mask detection
- Abnormal temperature reporting
- Mask missing reporting
- Interfaces:
  - Wireless Wi-Fi
  - 1 10/100 LAN port
  - 1 RS232 serial port
  - 1 Wiegand IN port
  - 1 Wiegand OUT port
  - 1 USB Host port
  - 1 USB OTG port
  - 1 2 wires Relay Output (N.O.)
- Integrated speaker
- Power supply 12VDC (max 13,5W)
- Operating temperature: -10°C / +40°C
- Size: 355x 133x 62 mm
- Weight: 1,5 Kg
- CE & RoHS

