

ADVANTAGES OF ELASTIC, WATER-PERMEABLE SURFACING SYSTEMS FOR RIDING FACILITIES



Advantages of KOMFORTEX® products



Approved quality

DLG Fokus test



Easy cutting & installation

Cost-efficient installation on drainage-capable, unbounded or bounded subgrade, bonding is possible



Improved surefootedness

Due to softness and elasticity



Weather-proof and frost-proof

Insulating against cold from the ground



High slip resistance

Non-slip surface prevents injuries from horses and riders



Sound reducing properties

Better stable atmosphere due to less noise



Ideal in preventing rheumatic illnesses

Joint-gentle flooring



Long-term resistance to urine



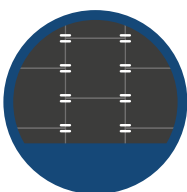
Long shelf life

With almost every type of shoeing



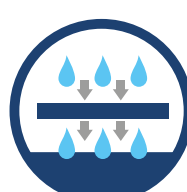
Environment-friendly

Non-toxic, TÜV-tested, recyclable materials



High dimensional stability

Due to pre-installed connectors at KOMFORTEX® elastic slabs, safe and H-paver slabs



Permeable to water

Additional drainage at the bottom side

Outdoor areas and walkways

Winter runs and open stables are standard in many stables. The flooring plays a decisive role here: if it is unsuitable, the horses stand on their own two feet and can fall or become ill. Many (bad weather) runs are former meadows. After a short time, hardly anything grows there, and what remains is natural ground. This is fine in dry weather, but when it rains, it turns into mud on which the four-legged friends are often reluctant or even unable to move. Worse still: germs multiply through excrement and urine. Health disadvantages such as thrush and moulting occur if the animals are kept permanently and over a long period of time on a boggy floor mixed with excrement.



Washing bays

The washing area should be set up in such a way that both horse and rider can stand well and safely, potential accident hazards are eliminated and aids are readily available. The water should be drained well. This is guaranteed by the excellent drainage properties of KOMFORTEX® products.



Test	Unit	Result
Water infiltration rate		
Centre of a tile	mm/h	73
Centre of four tiles	mm/h	3298

Paddocks

A paddock that directly adjoins a box – also known as a small run – should offer the horse additional space and climatic stimuli. It is important to have a surface that can be walked on all year round, is non-slip and easy to clean. Rubber composite paving or rubber slabs, for example, are suitable. The materials should be non-slip and drainable like the KOMFORTEX ® product with a slip resistance of:



Bare hoof, dry	$\mu = 0.82$
Bare hoof, wet	$\mu = 0.81$
Horseshoe, dry	$\mu = 0.68$
Horseshoe, wet	$\mu = 0.54$

Guidance systems

The right floor for the horse walker is a frequent “topic of dispute” among riders is the choice of the right floor for the horse walker. To protect the horse’s tendons and joints, the surface should be neither too hard nor too soft. Ideally, it should also be easy to clean, free of dust and accessible if necessary. The controlled movement that comes with a horse walker offers advantages. Young horses in particular learn to walk more evenly, as they have to adapt to the steady pace of the horse walker. The controlled movement is also good for horses that need to recover from injuries and the movement in the horse walker usually has a positive effect on the healing process. One of the prerequisites for the floor covering is abrasion resistance, as the load is very high. This is also provided by the elastic paving, for example.



The abrasion depth after 5,000 double cycles was approx. 1.45 mm, which corresponds to approx. 3.5 % of the coating height. 0.9 g of the rubbed surface was abraded. The abrasion depth after 10,000 double cycles was approx. 1.71 mm, 4.1 % of the pavement height. A total of 3.0 g was abraded from the abraded surface.

Solarium areas and clinic area

The flooring in a recovery box should not be uneven and must be easy on the joints. The floor covering must also be able to withstand nervous or even aggressive animals in the long term – torn floor coverings are not an option in the hospital area! The joint-friendly cushioning properties of KOMFORTEX ® products were also tested.

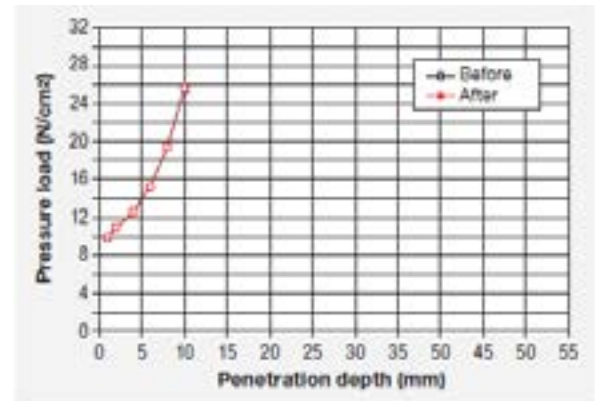


Figure 3: Pressure load for simulation of lying down (joint calotte).

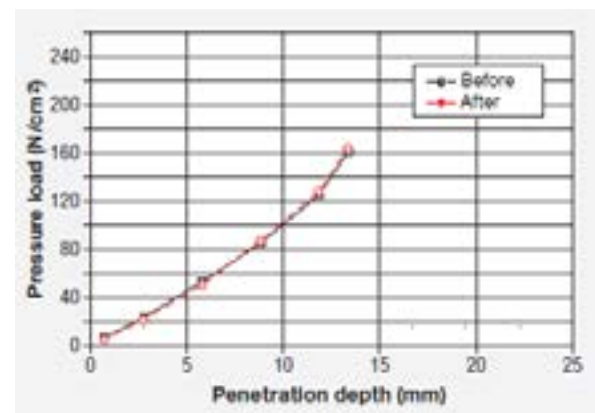
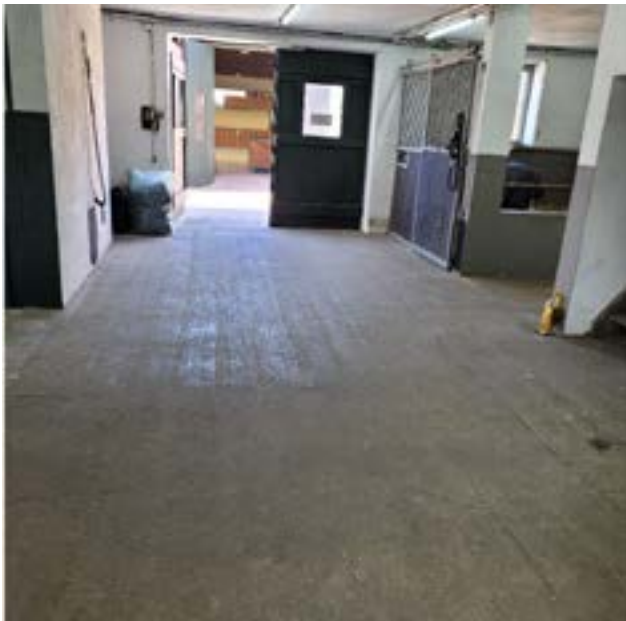


Figure 4: Pressure load for simulation of active movement (horseshoe).

Floor Protection

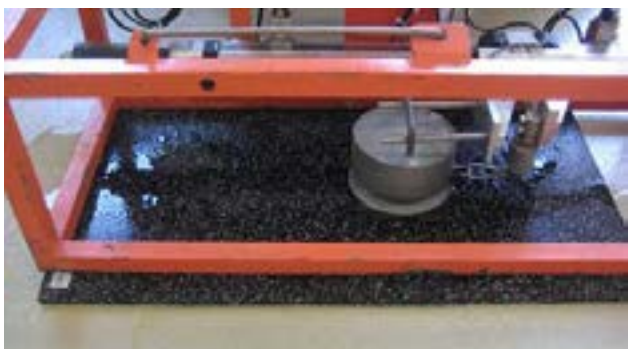


Before installation



After installation

An inexpensive alternative to slabs and elastic paving for indoor use is sheeting. The mechanical properties were also tested.



The measured coefficients of friction (μ) are above the minimum value of $\mu = 0.40$ (DIN 7861) and $\mu = 0.45$

Wall lining

KOMFORTEX® protection is a durable, easy-to clean and water-resistant wall covering used as protection against kicks in horse boxes. KOMFORTEX® protection is available as roll material as standard plates or premium plates and easy to install. Therefore it protects the wall from damages and decreases the risk of injuries to the horses.



Elastic, water-permeable surfacing systems for riding facilities and horse farms.



Visiting address:
Stillestorps Industriväg 8,
SE-443 61 Stenkullen

Postal address: Vibisol AB
Box 3037, SE-443 03
Lerum

Phone: +46 302 77 01 30
E-mail: info@vibisol.se
Website: www.vibisol.se