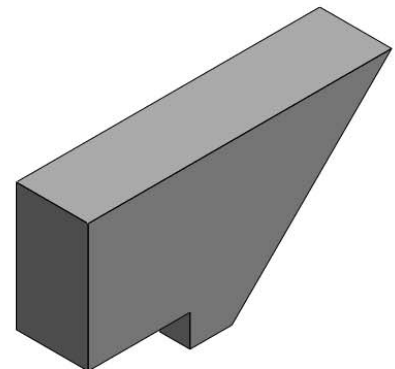
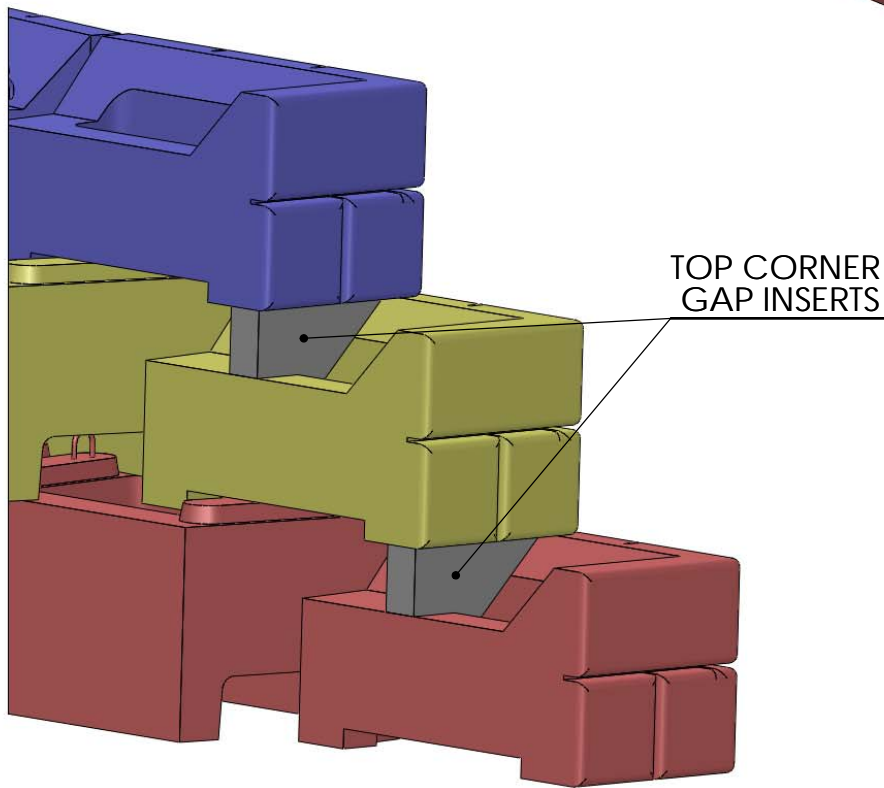
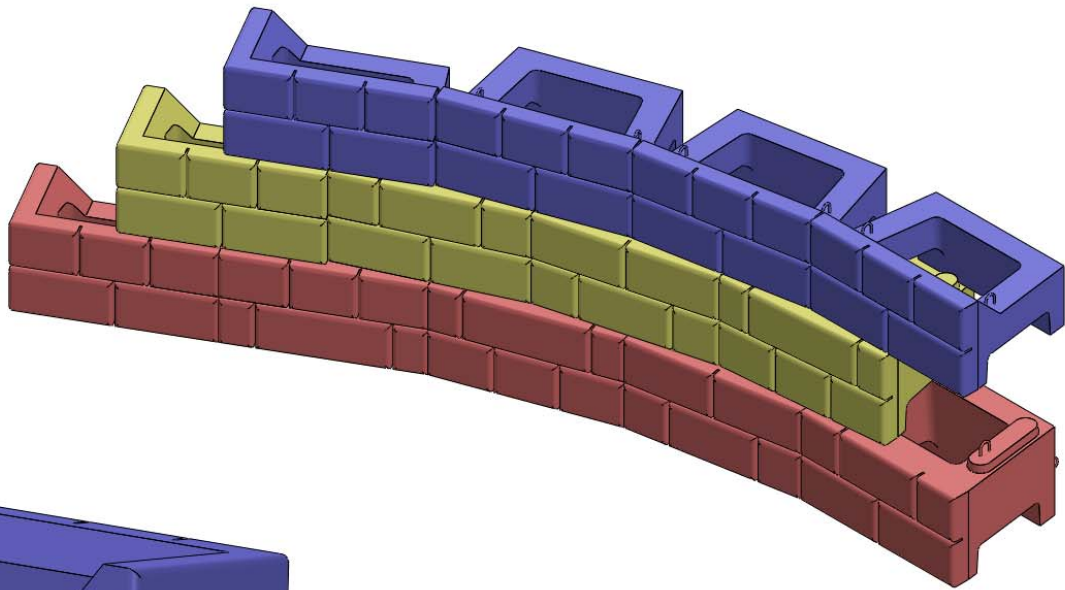


2' STEP DOWN WITH TOP CORNER GAP INSERTS



TOP CORNER GAP INSERT



DRAWN BY	DATE	TITLE:
DAN BALLING	12/12/2013	2' STEP DOWN
16500 SOUTH 500 WEST BLUFFDALE, UTAH 84065 PHONE: (801) 571-2028		DWG NO. WD-8
SCALE: 1: 40		SHEET 1 OF 1