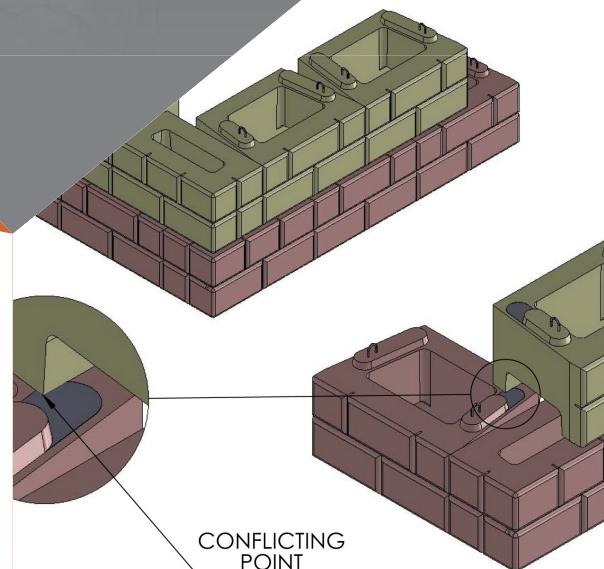


# Design Manual: Construction Drawings

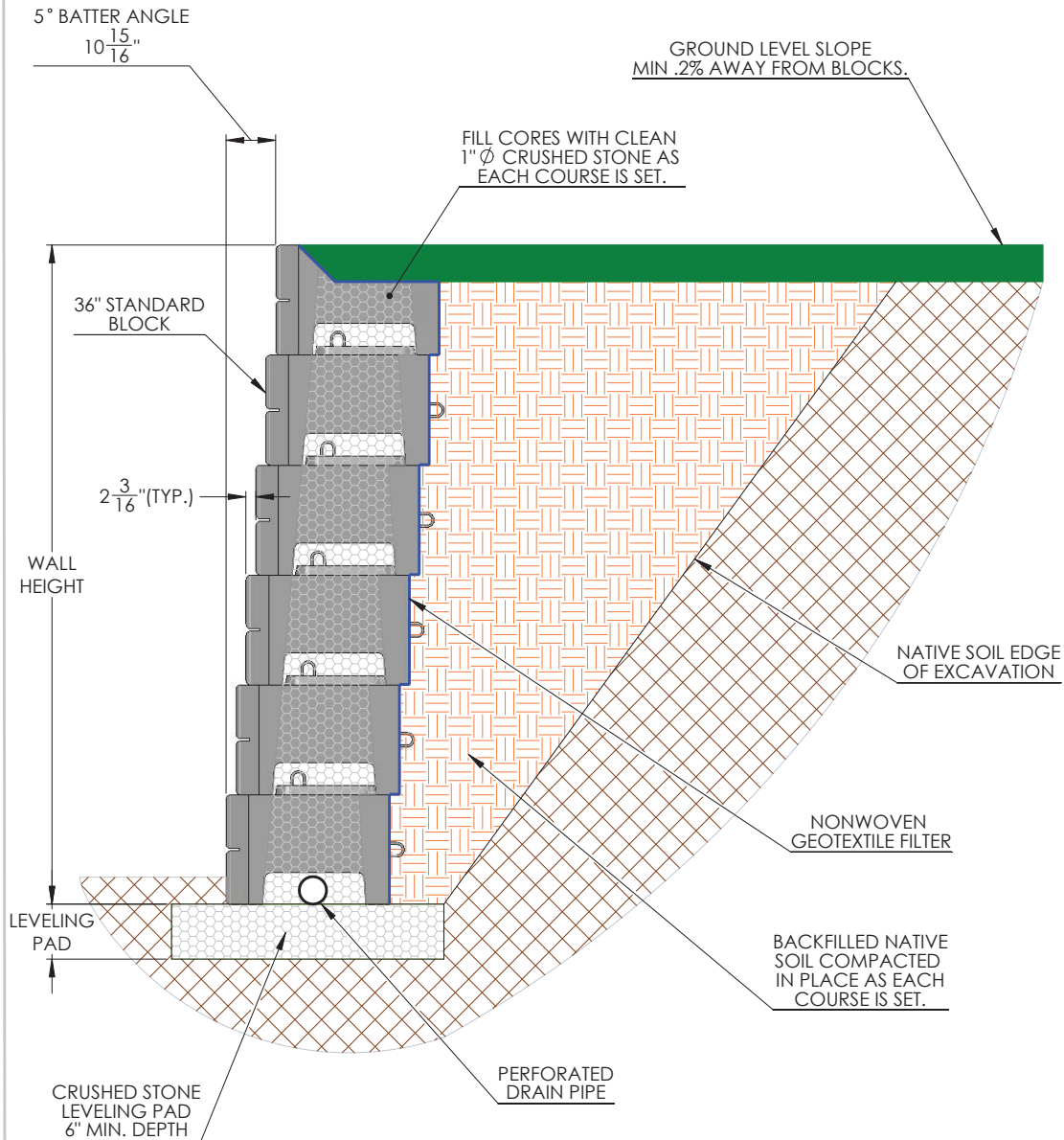
## Section 5



[www.verti-block.com](http://www.verti-block.com)

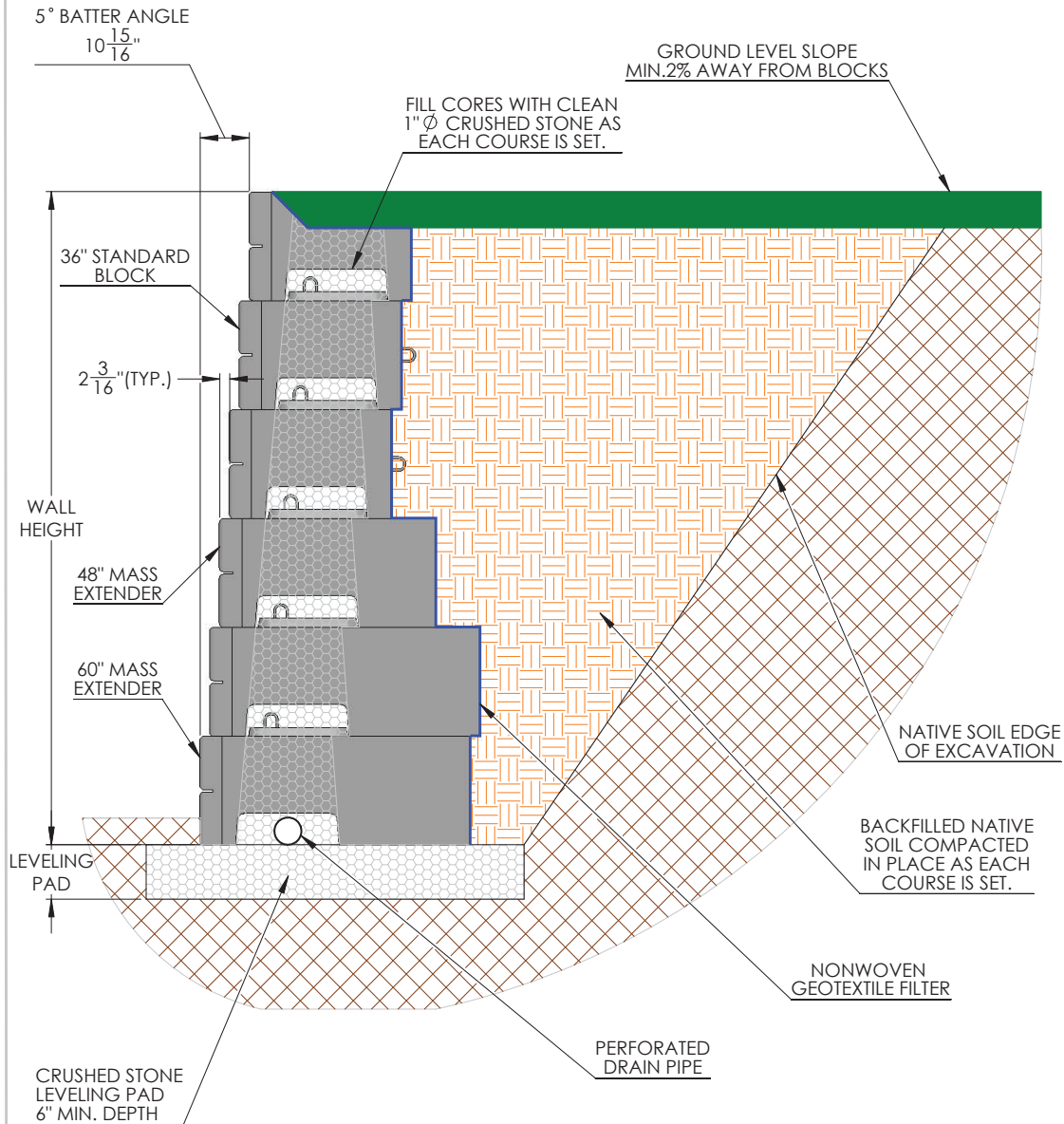


## TYPICAL GRAVITY WALL WITH 36" VERTI-BLOCK



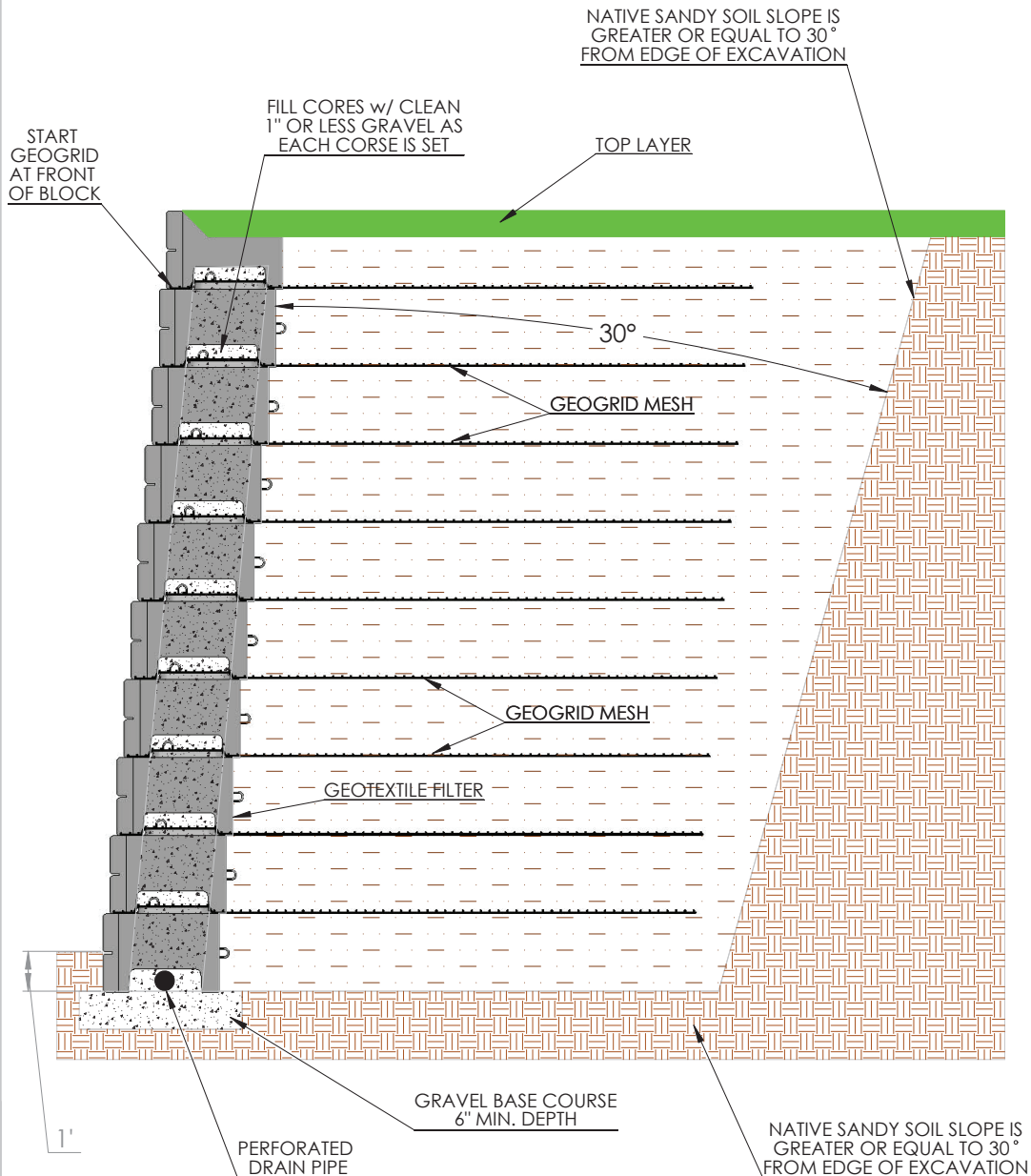
DRAWN BY	DATE	TITLE:
DAN BALLING	12/30/2013	12' RETAINING SECTION
16500 SOUTH 500 WEST BLUFFDALE, UTAH 84065 PHONE: (801) 571-2028	DWG NO.	WD-14
SCALE: 1: 30	SHEET 1 OF 1	

## TYPICAL GRAVITY WALL WITH VERTI-BLOCK MASS EXTENDERS



DRAWN BY	DATE	TITLE:
DAN BALLING	12/30/2013	12' SECTION W/ MASS EXTENDERS
16500 SOUTH 500 WEST BLUFFDALE, UTAH 84065 PHONE: (801) 571-2028		DWG NO.
		WD-15
SCALE: 1: 30		SHEET 1 OF 1

## 20' GEOGRID FRICTION CONNECTION



DRAWN BY	DATE
DAN BALLING	12/12/2013
16500 SOUTH 500 WEST BLUFFDALE, UTAH 84065 PHONE: (801) 571-2028	

TITLE: 20' FRICTION DETAIL

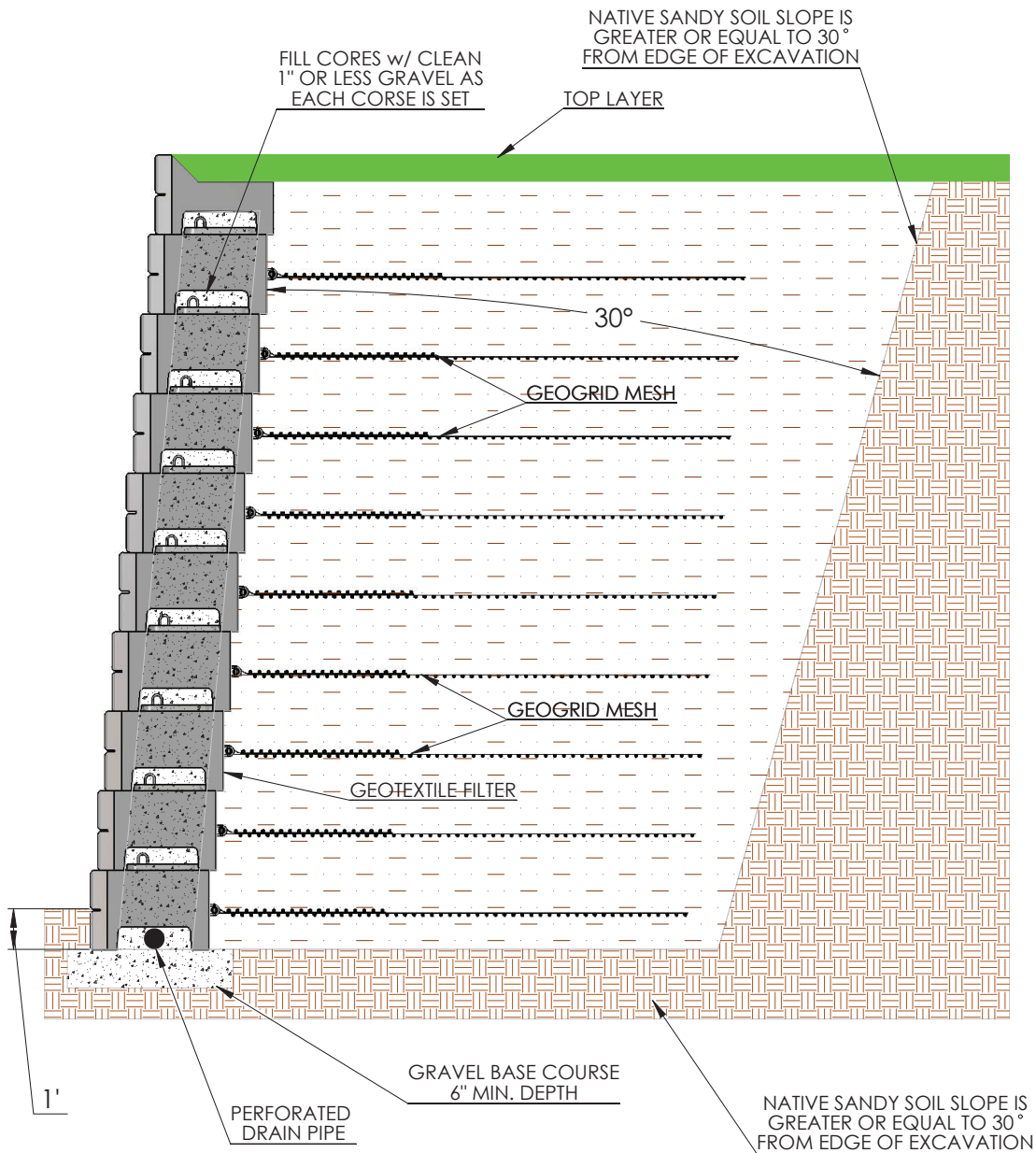
DWG NO. M-03

SCALE: 1: 42

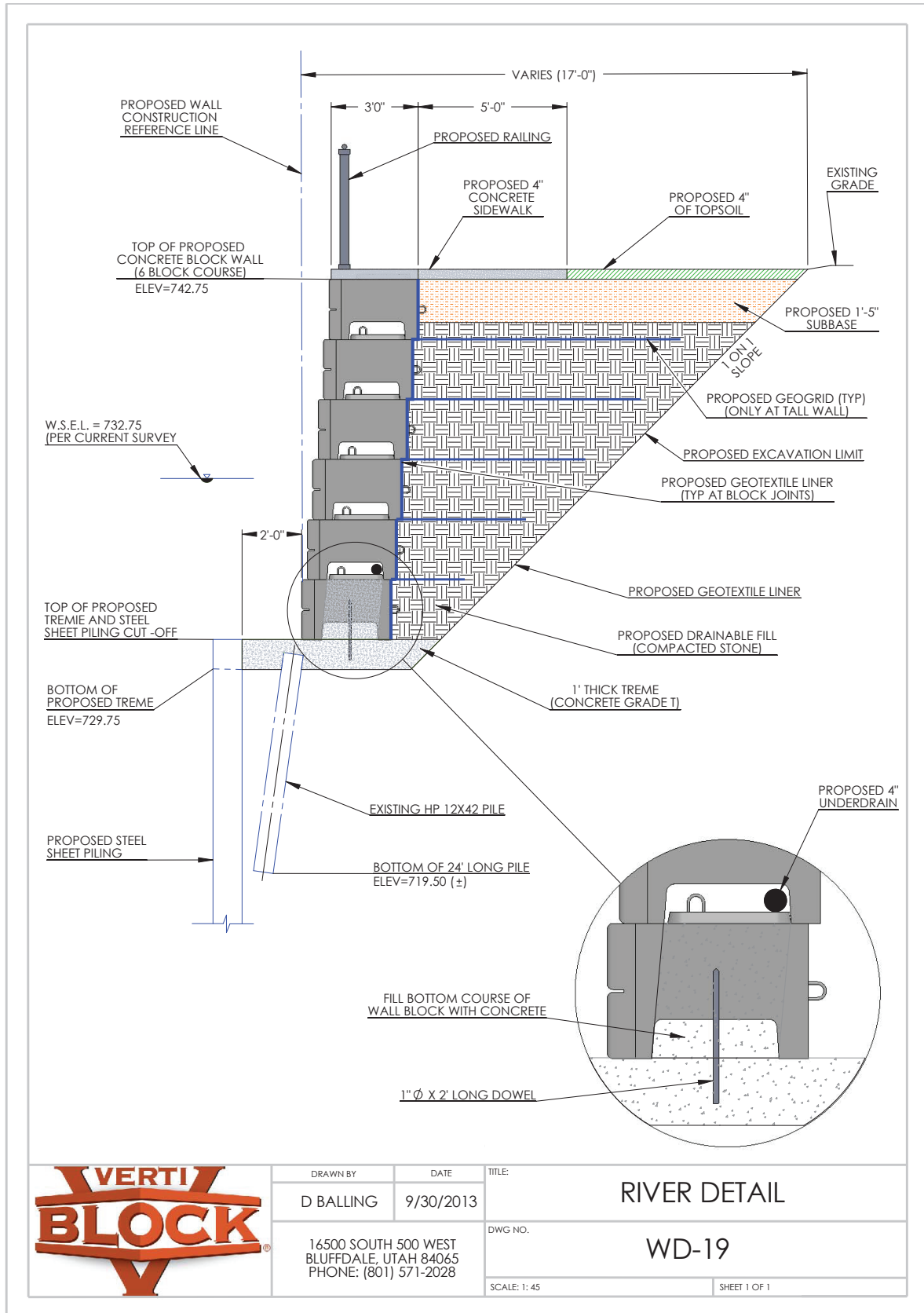
SHEET 1 OF 1

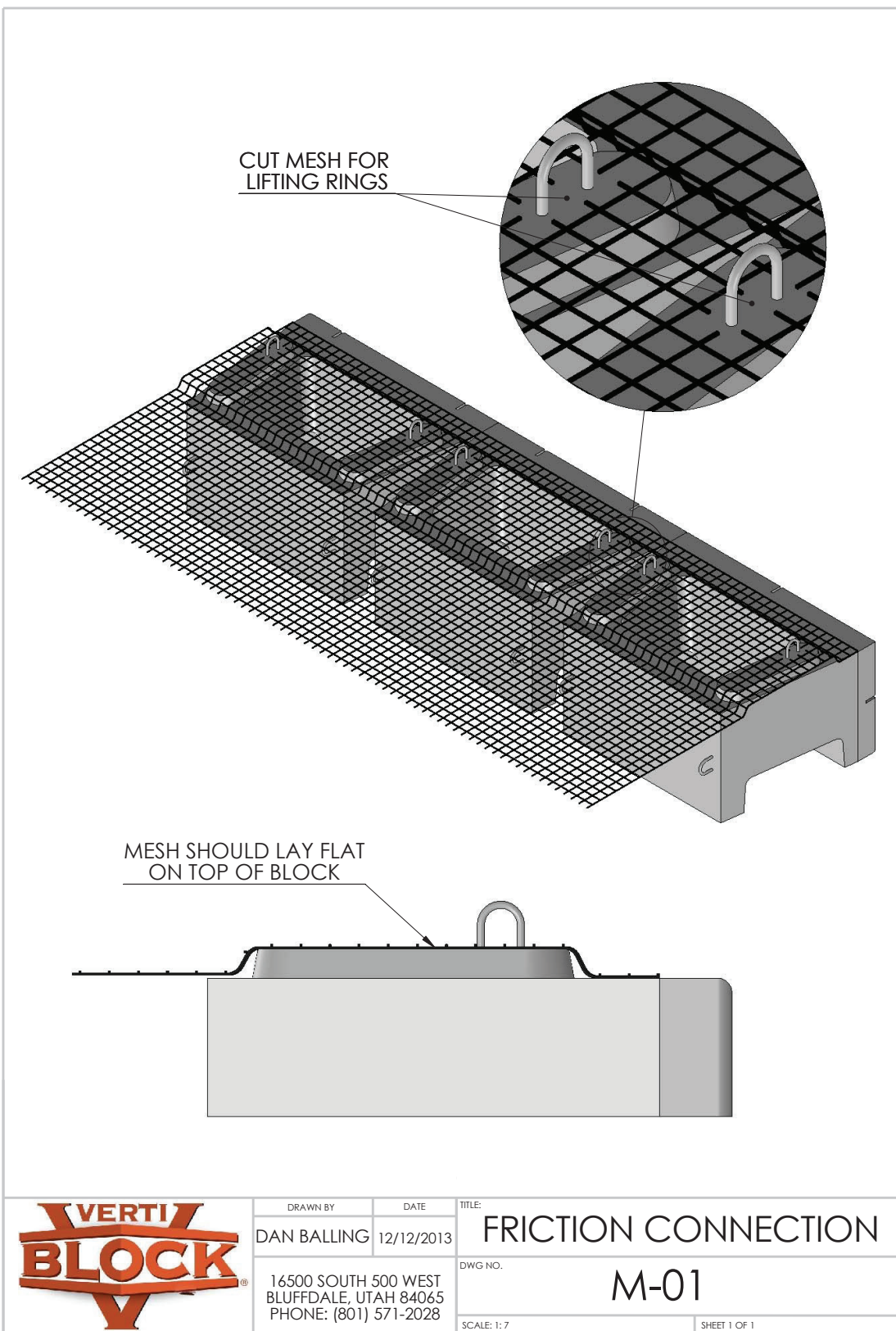


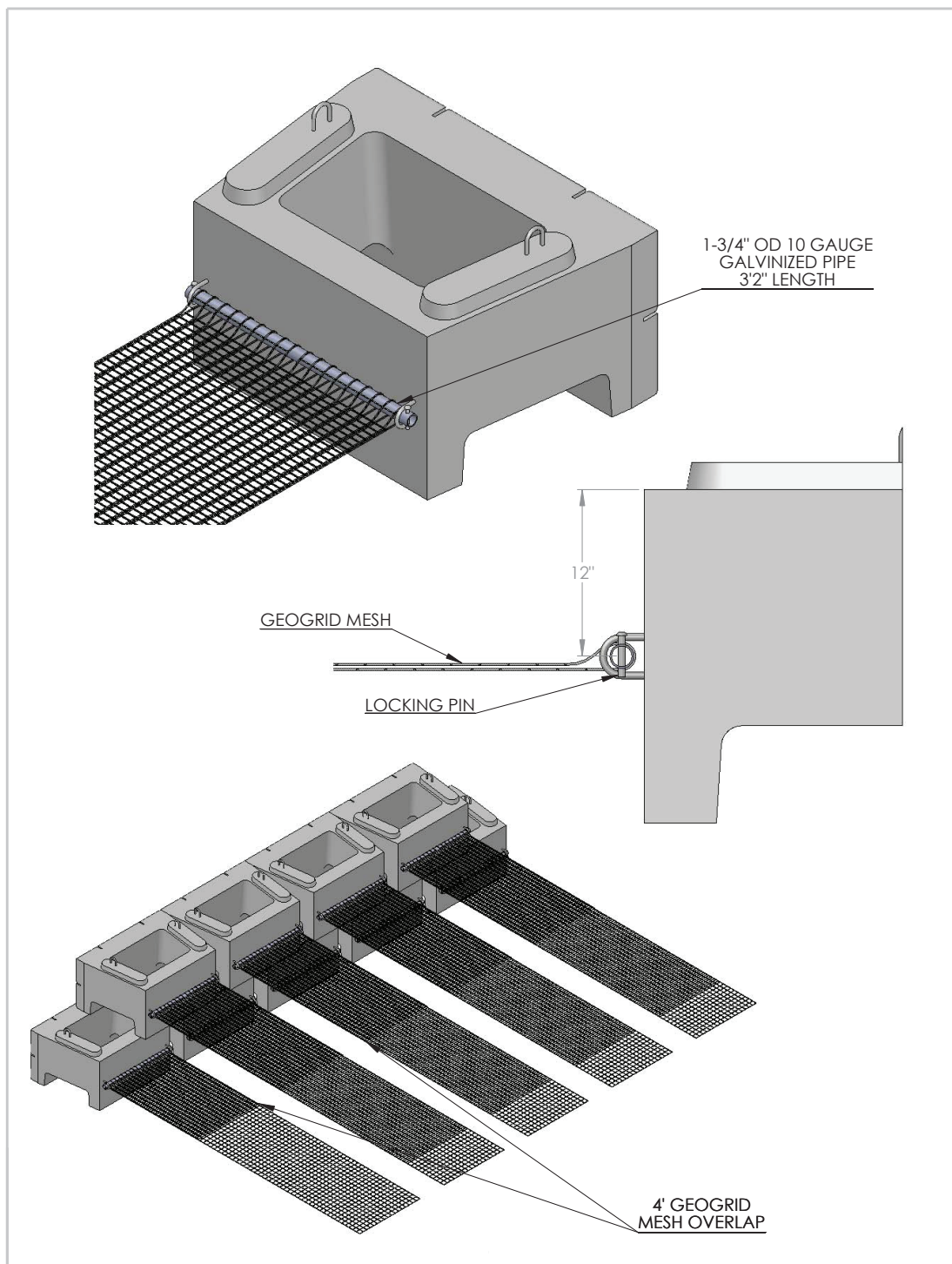
## 20' GEOGRID POSITIVE CONNECTION



DRAWN BY	DATE	TITLE:
DAN BALLING	12/12/2013	20' POSITIVE CONNECTION
16500 SOUTH 500 WEST BLUFFDALE, UTAH 84065 PHONE: (801) 571-2028		DWG NO.
		M-04
SCALE: 1: 15		SHEET 1 OF 1



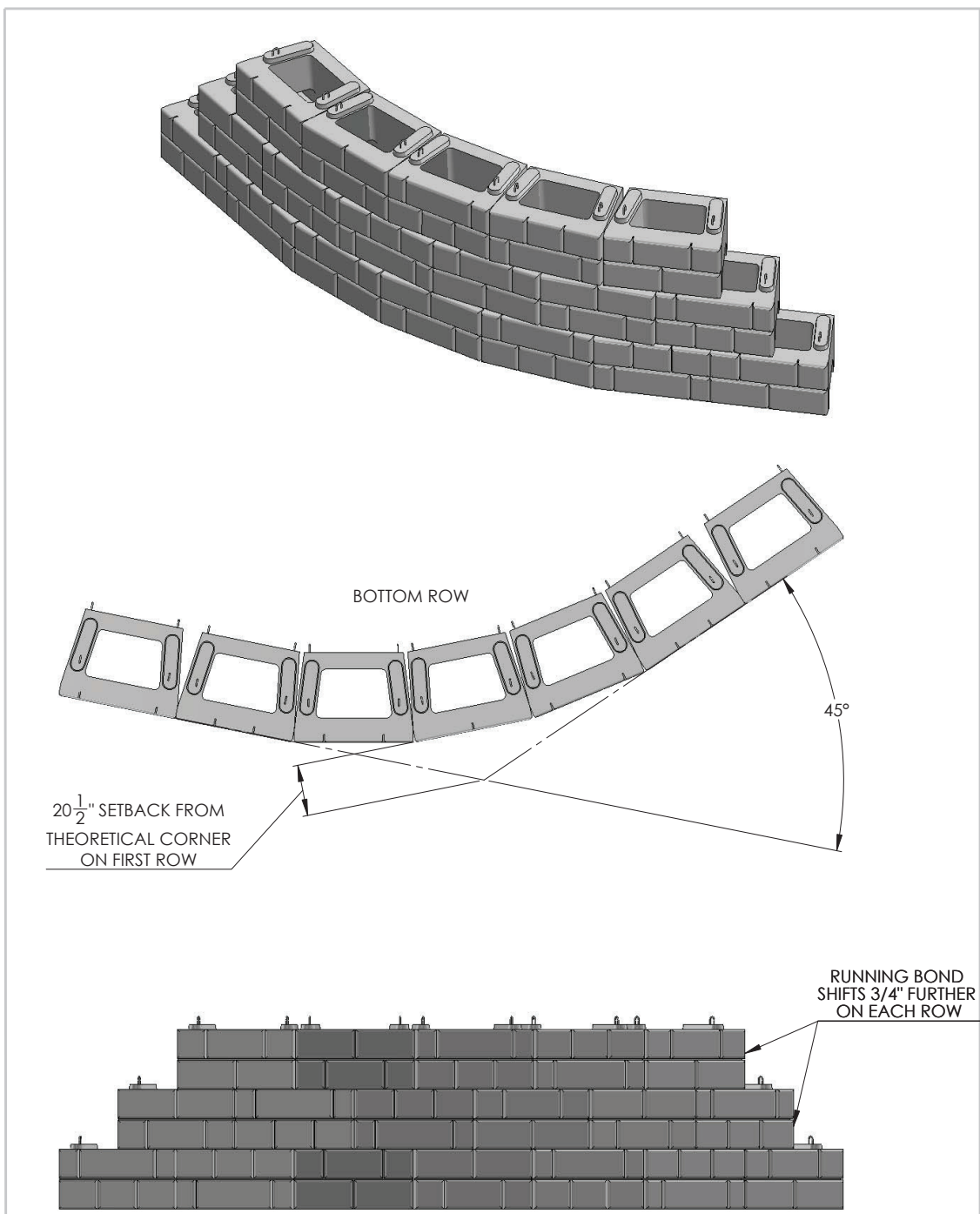





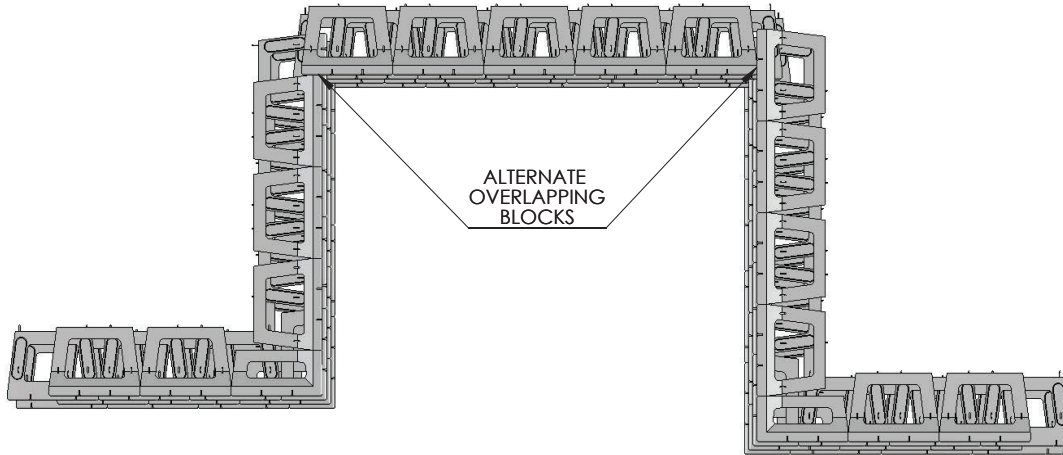
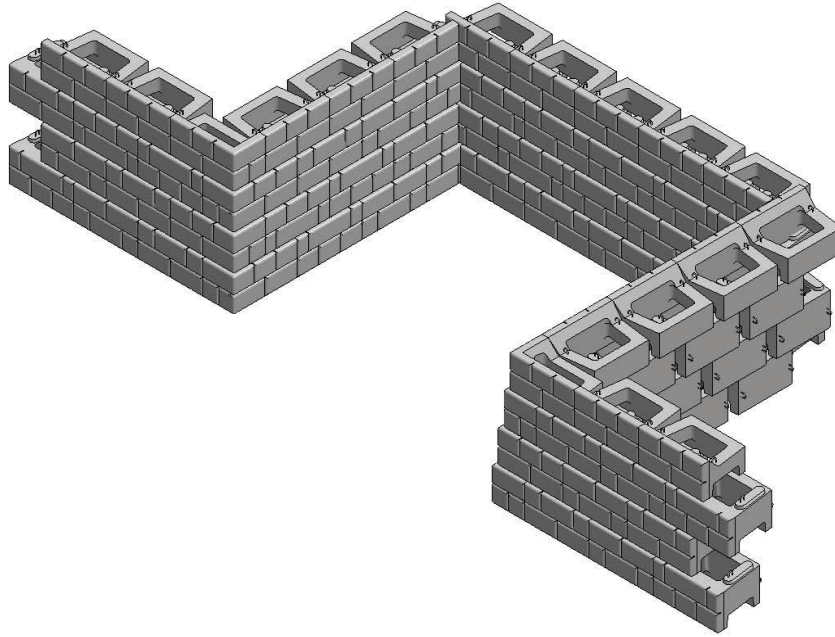
DRAWN BY	DATE
DAN BALLING	12/12/2013
16500 SOUTH 500 WEST BLUFFDALE, UTAH 84065 PHONE: (801) 571-2028	

TITLE:	POSITIVE CONNECTION
DWG NO.	M-02
SCALE: 1: 15	SHEET 1 OF 1

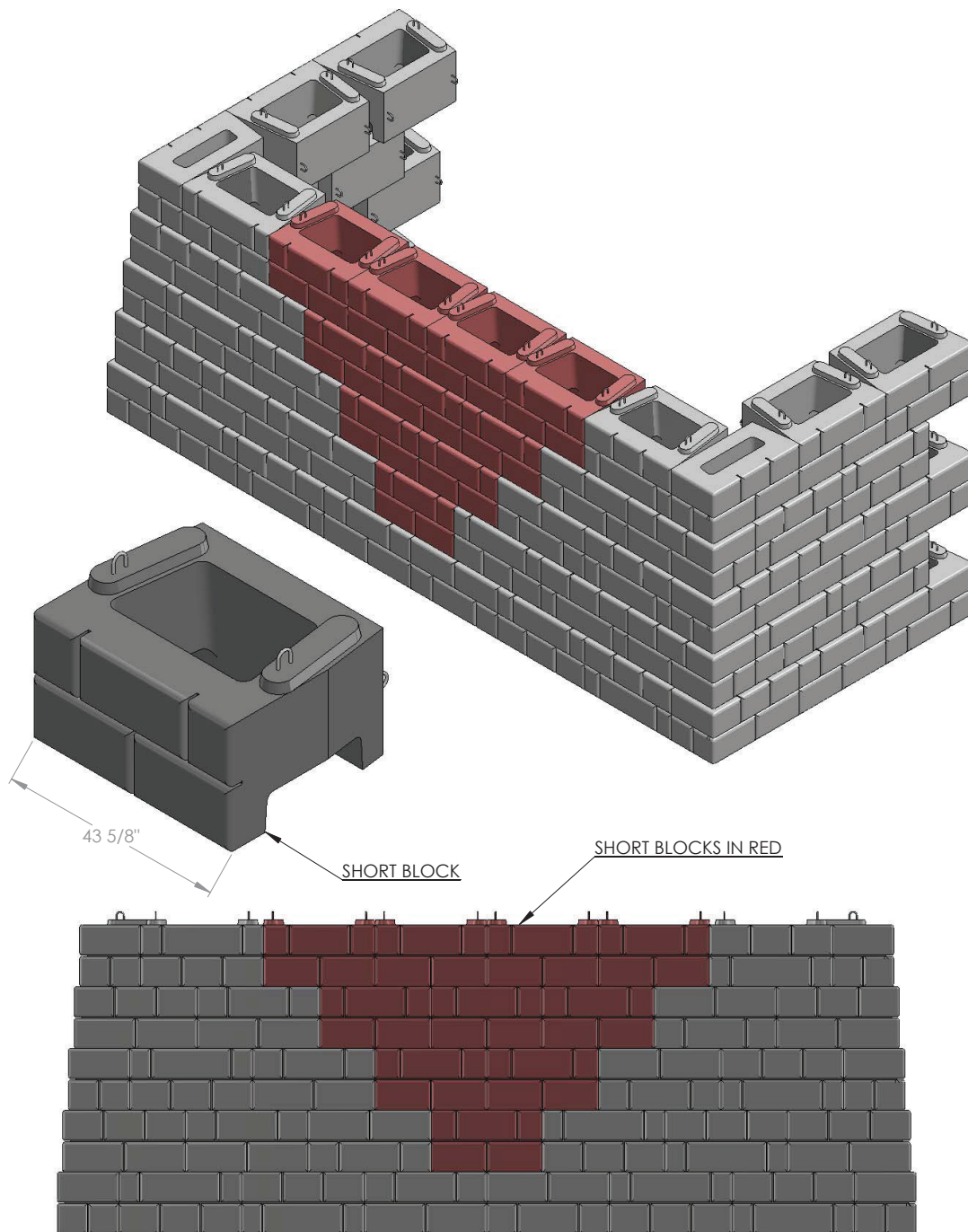




	DRAWN BY	DATE	TITLE:
	DAN BALLING	12/12/2013	45 ° OUTSIDE CORNER
	16500 SOUTH 500 WEST BLUFFDALE, UTAH 84065 PHONE: (801) 571-2028		DWG NO.
			C-01
	SCALE: 1: 50	SHEET 1 OF 1	

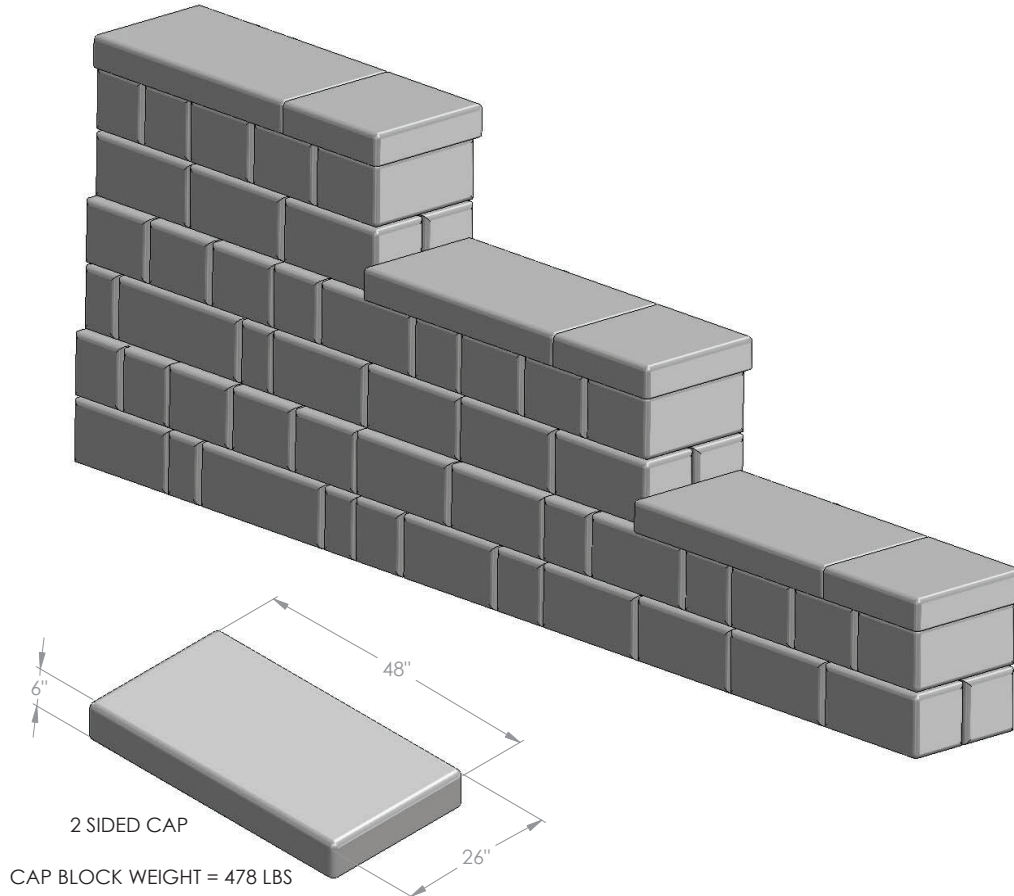


DRAWN BY	DATE	TITLE:
DAN BALLING	12/12/2013	DOUBLE 90° INSIDE CORNER
16500 SOUTH 500 WEST BLUFFDALE, UTAH 84065 PHONE: (801) 571-2028		DWG NO.
		C-02
SCALE: 1: 50		SHEET 1 OF 1

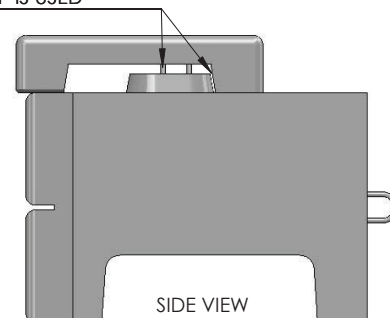
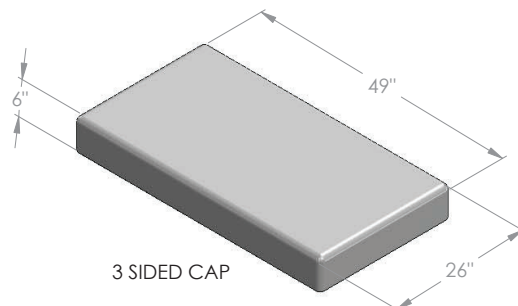


DRAWN BY	DATE	TITLE:
DAN BALLING	12/12/2013	DOUBLE 90° OUTSIDE CORNER
16500 SOUTH 500 WEST BLUFFDALE, UTAH 84065 PHONE: (801) 571-2028		DWG NO.
		C-03
SCALE: 1: 50		SHEET 1 OF 1

## 6 INCH CAP STEP-DOWN

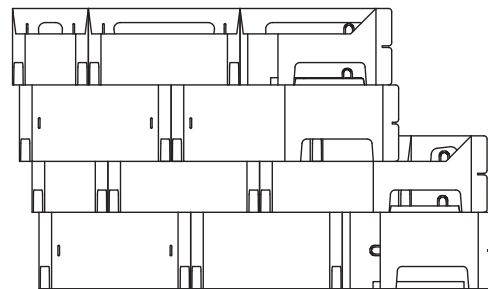
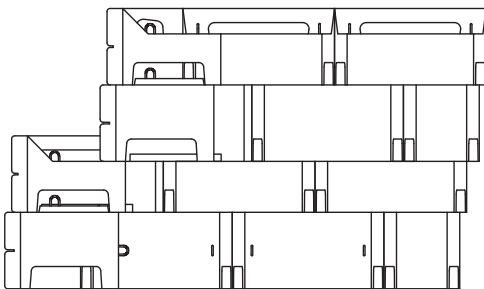
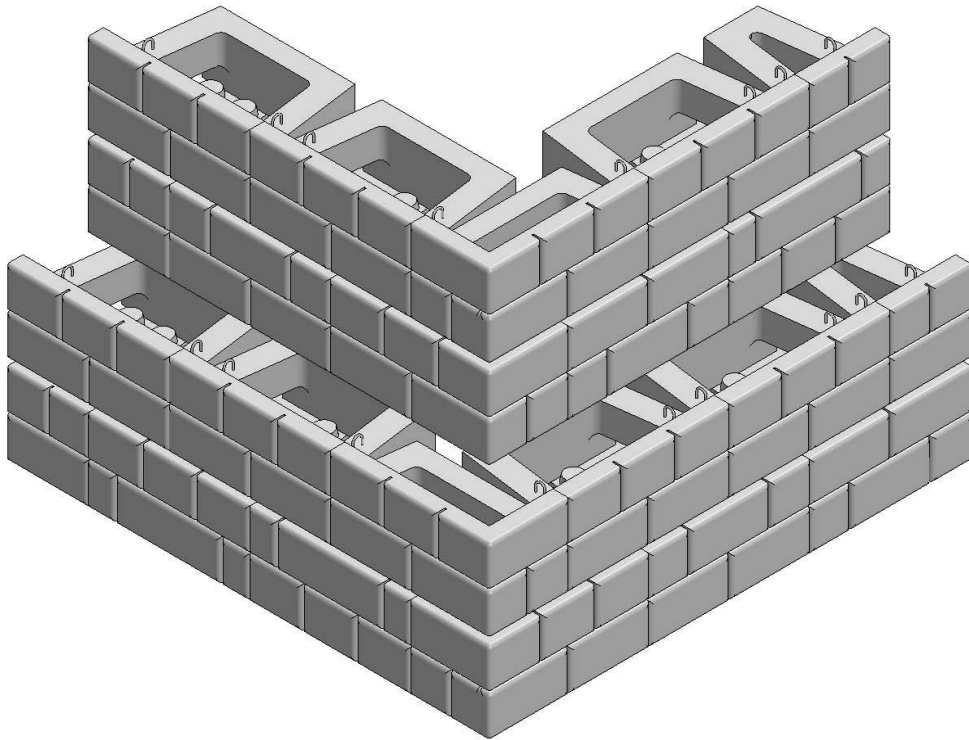


CONFLICTING AREA WILL REQUIRE THE USE OF  
A 13" NUB BLOCKOUT OR SAW CUT AND REMOVAL  
OF PICK POINT WHEN CAP IS USED



DRAWN BY	DATE	TITLE:
DAN BALLING	12/18/2013	6" CAP BLOCK SCENARIO
16500 SOUTH 500 WEST BLUFFDALE, UTAH 84065 PHONE: (801) 571-2028		DWG NO.
		CB-01
SCALE: 1: 4		SHEET 1 OF 1



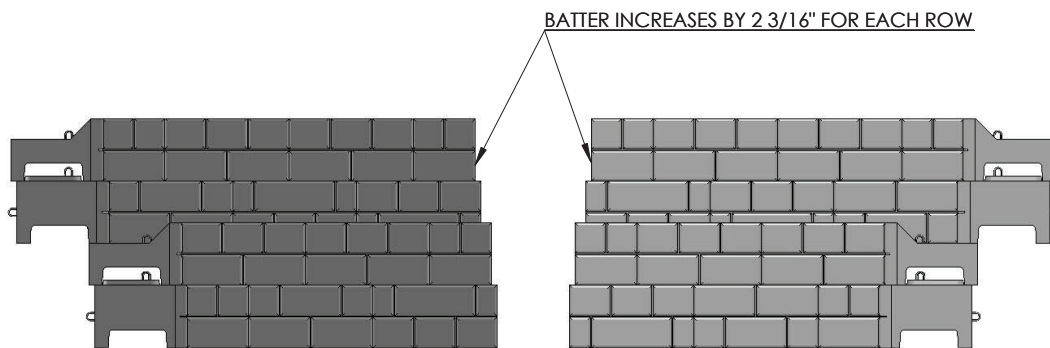
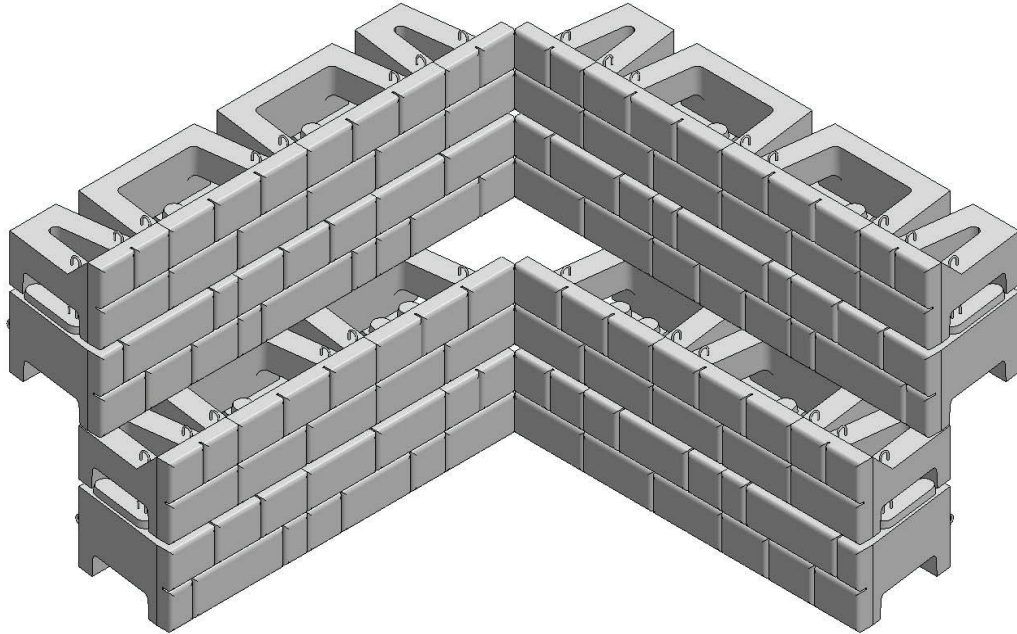


BACK SIDE VIEWS

NOTE:  
REFERENCE OUTSIDE CORNER DETAIL ON NUB BLOCKOUT

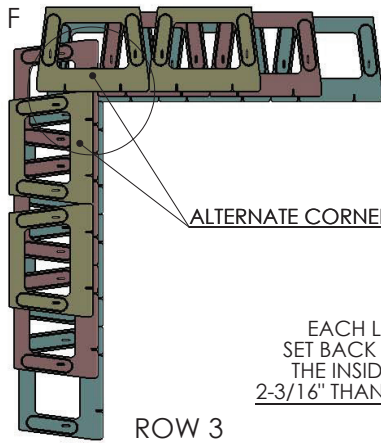
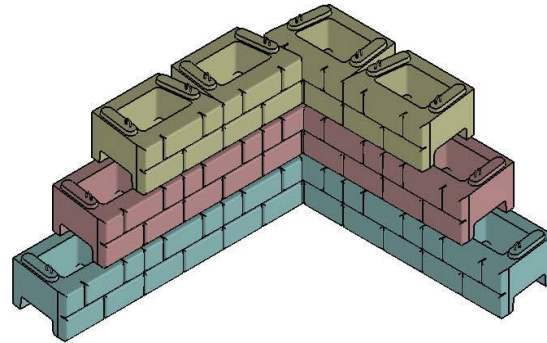


DRAWN BY	DATE	TITLE:
DAN BALLING	12/12/2013	PLANTER ROW OUTSIDE CORNER
16500 SOUTH 500 WEST BLUFFDALE, UTAH 84065 PHONE: (801) 571-2028		DWG NO.
		PR-02
SCALE: 1: 4		SHEET 1 OF 1

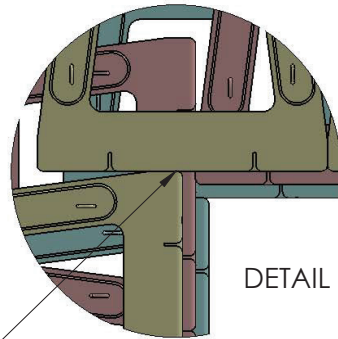


DRAWN BY	DATE	TITLE:
DAN BALLING	12/12/2013	PLANTER ROW INSIDE CORNER
16500 SOUTH 500 WEST BLUFFDALE, UTAH 84065 PHONE: (801) 571-2028		DWG NO.
		PR-03
SCALE: 1: 4		SHEET 1 OF 1

## INTERLACED INSIDE CORNER DETAIL



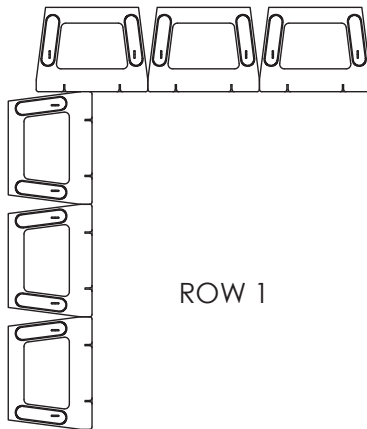
ALTERNATE CORNER OVERLAP



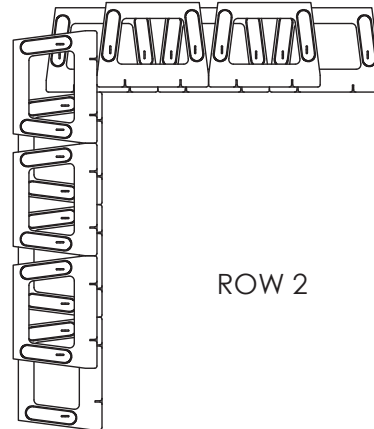
DETAIL F

EACH LEVEL WILL BE  
SET BACK AND TOWARD  
THE INSIDE CORNER BY  
2-3/16" THAN THE ONE BELOW

ROW 3



ROW 1

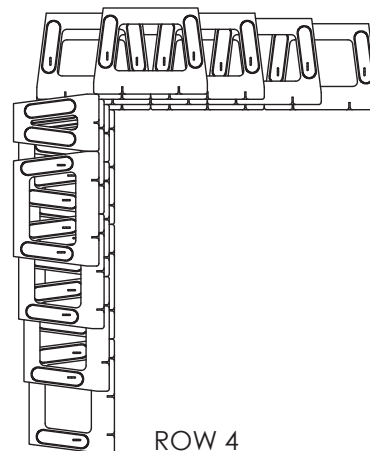
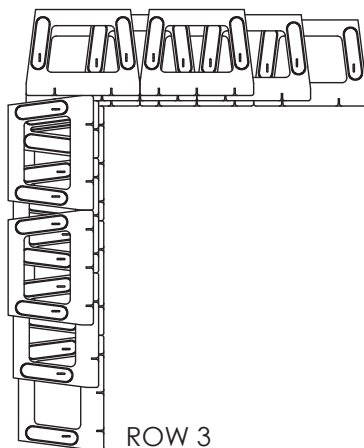
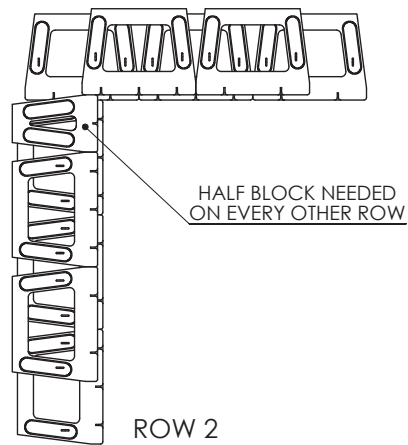
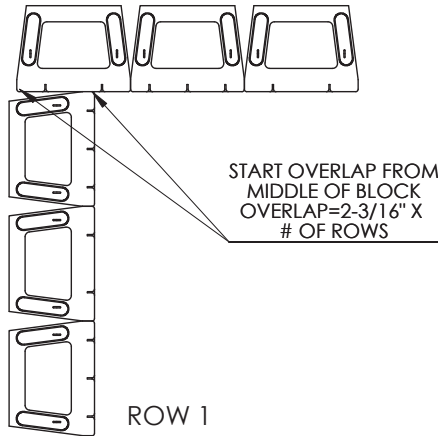
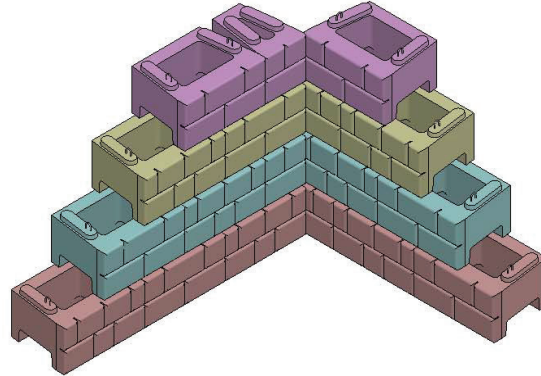


ROW 2



DRAWN BY	DATE	TITLE:
DAN BALLING	12/12/2013	INTERLACED INSIDE CORNER
16500 SOUTH 500 WEST BLUFFDALE, UTAH 84065 PHONE: (801) 571-2028		DWG NO.
		WD-1
SCALE: 1: 60		SHEET 1 OF 1

## BUTT-JOINT INSIDE CORNER DETAIL

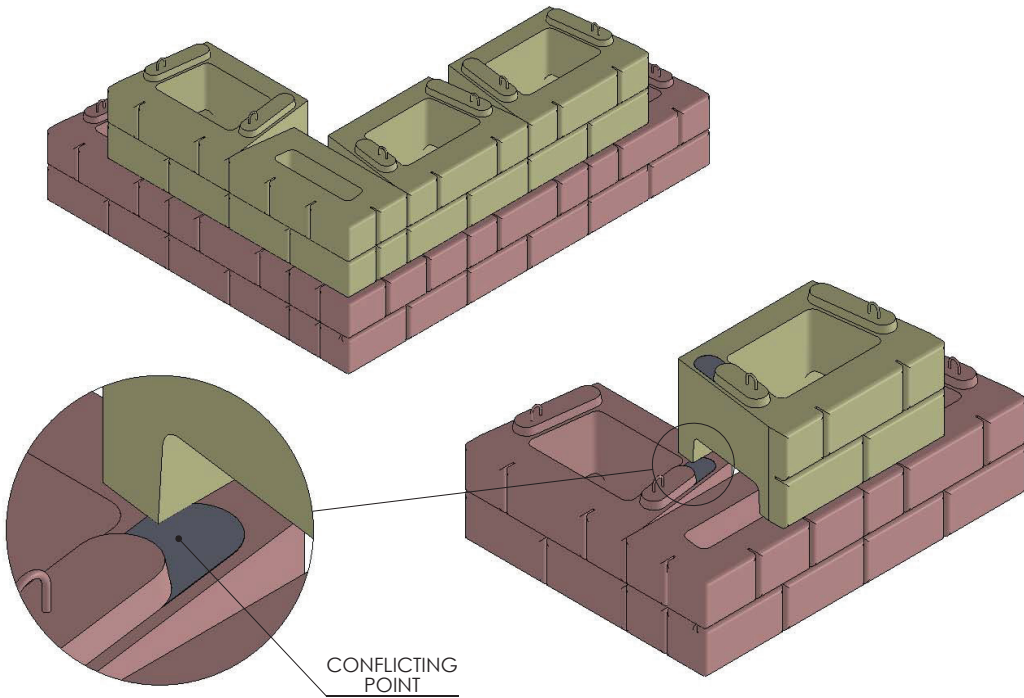


DRAWN BY	DATE
DAN BALLING	12/12/2013
16500 SOUTH 500 WEST BLUFFDALE, UTAH 84065 PHONE: (801) 571-2028	

TITLE:	BUTT-JOINT INSIDE CORNER
DWG NO.	WD-2
SCALE: 1: 60	SHEET 1 OF 1

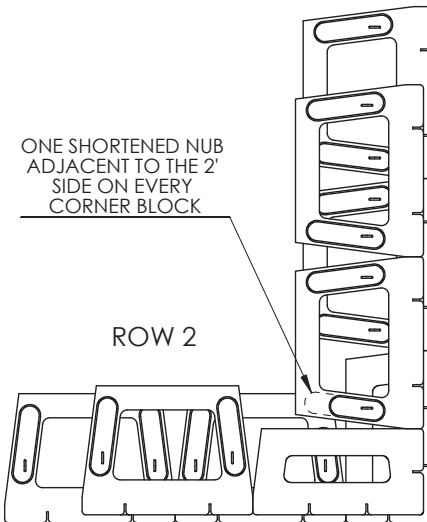


## OUTSIDE CORNER DETAIL



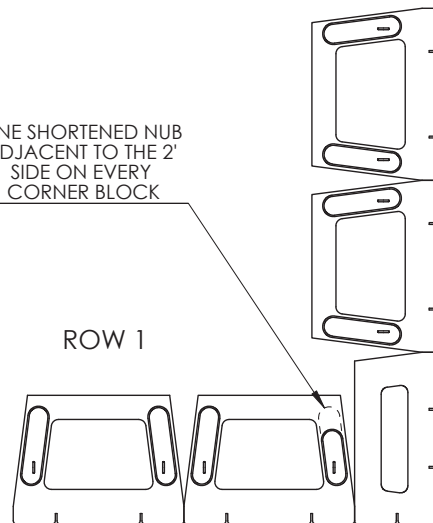
ONE SHORTENED NUB  
ADJACENT TO THE 2'  
SIDE ON EVERY  
CORNER BLOCK

ROW 2



ONE SHORTENED NUB  
ADJACENT TO THE 2'  
SIDE ON EVERY  
CORNER BLOCK

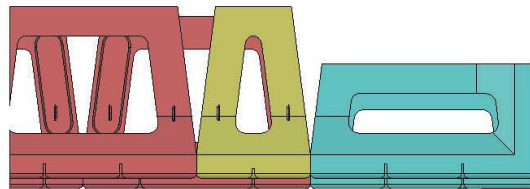
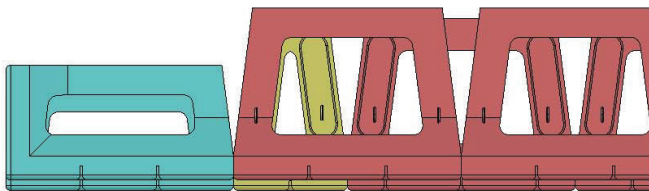
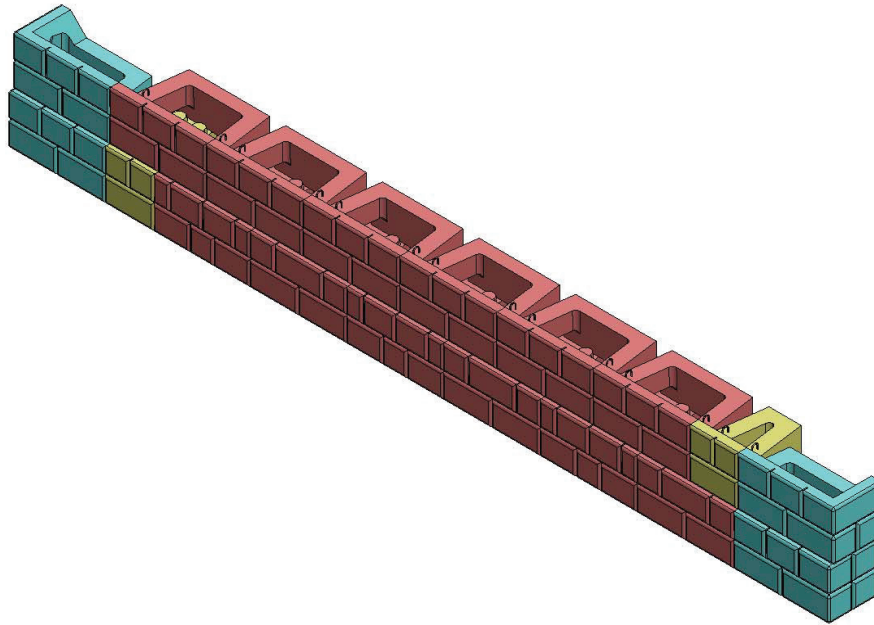
ROW 1



DRAWN BY	DATE	TITLE:
DAN BALLING	12/12/2013	OUTSIDE CORNER
16500 SOUTH 500 WEST BLUFFDALE, UTAH 84065 PHONE: (801) 571-2028		DWG NO.
SCALE: 1: 40		SHEET 1 OF 1

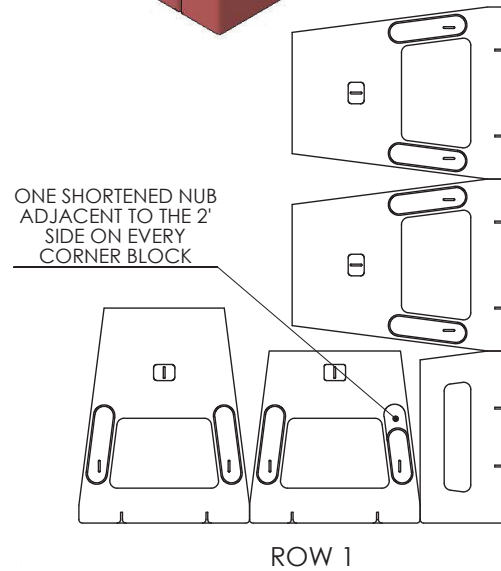
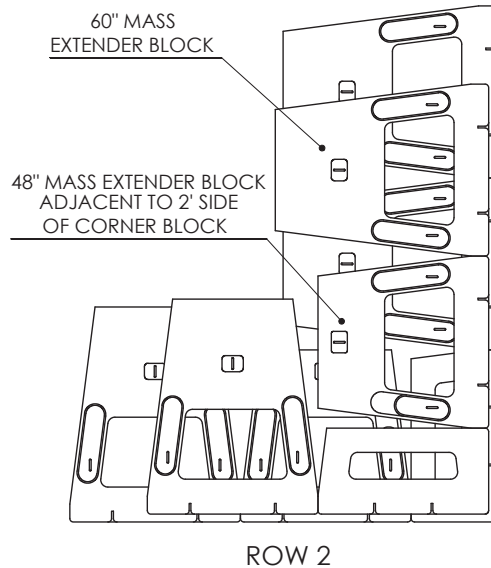
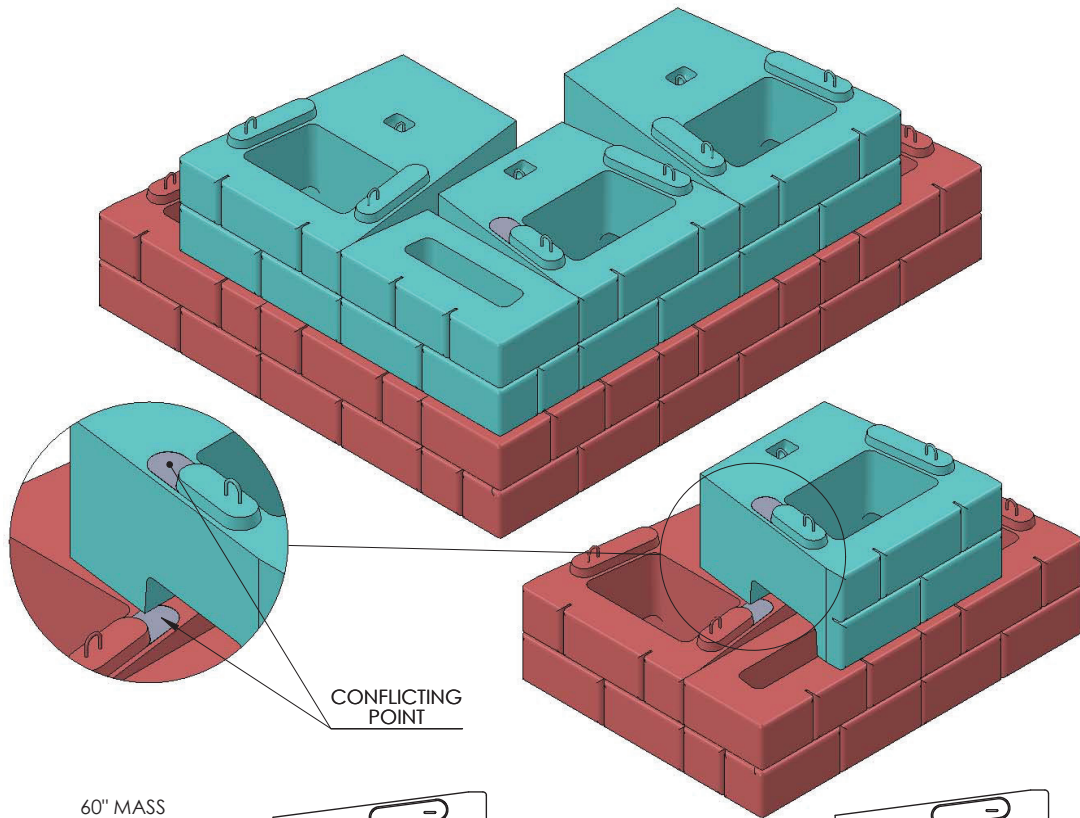
WD-3

## STRAIGHT FACE WITH SIMPLE 2' RETURNS



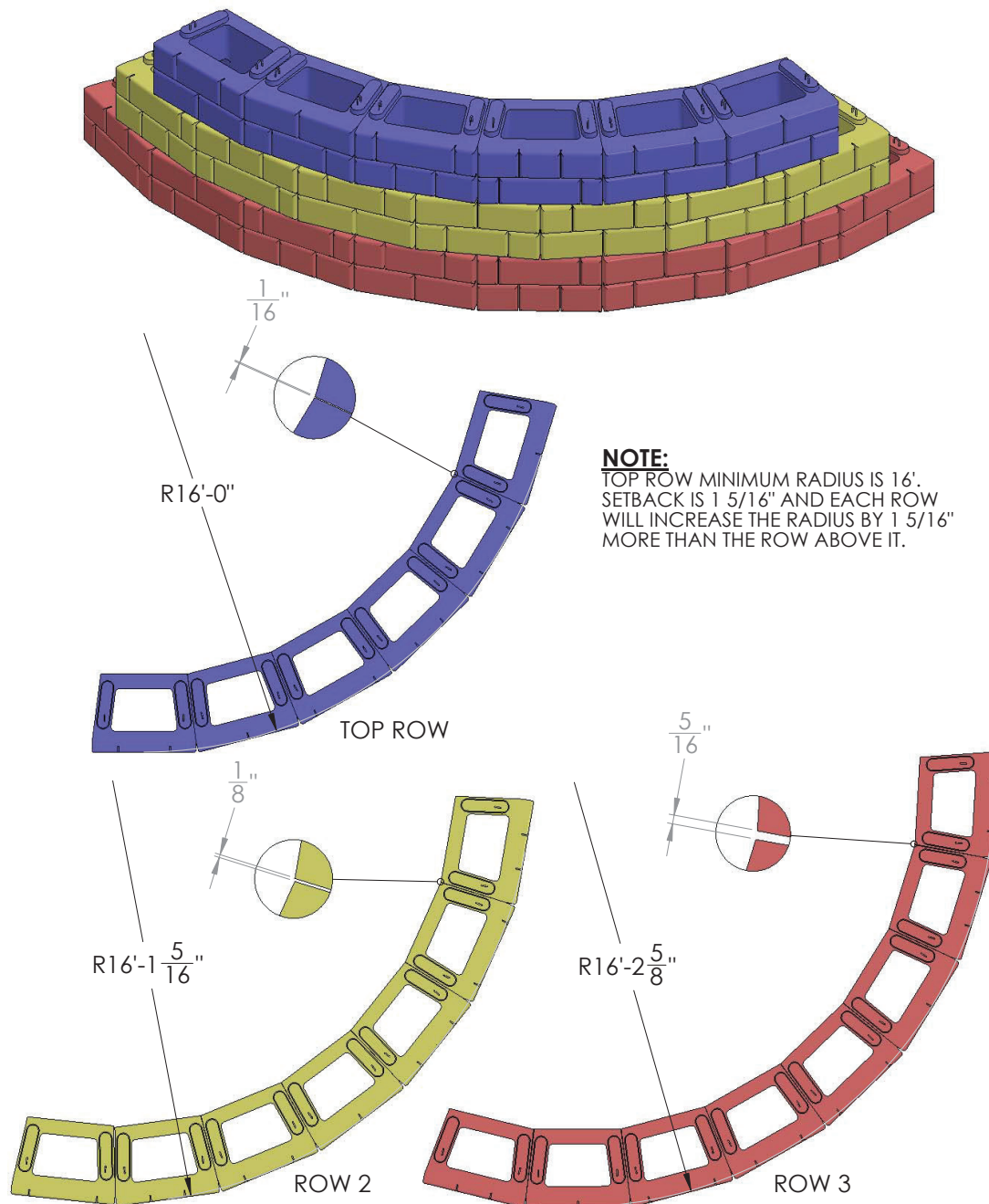
DRAWN BY	DATE	TITLE:
DAN BALLING	12/12/2013	2' RETURN
16500 SOUTH 500 WEST BLUFFDALE, UTAH 84065 PHONE: (801) 571-2028		DWG NO.
		WD-4
SCALE: 1: 40		SHEET 1 OF 1

## OUTSIDE CORNER WITH MASS EXTENDERS DETAIL



DRAWN BY	DATE	TITLE
DAN BALLING	12/12/2013	OUTSIDE CORNER w/ ME
16500 SOUTH 500 WEST BLUFFDALE, UTAH 84065 PHONE: (801) 571-2028		DWG NO.
		WD-5
SCALE: 1: 40		SHEET 1 OF 1

## OUTSIDE CURVE DETAIL

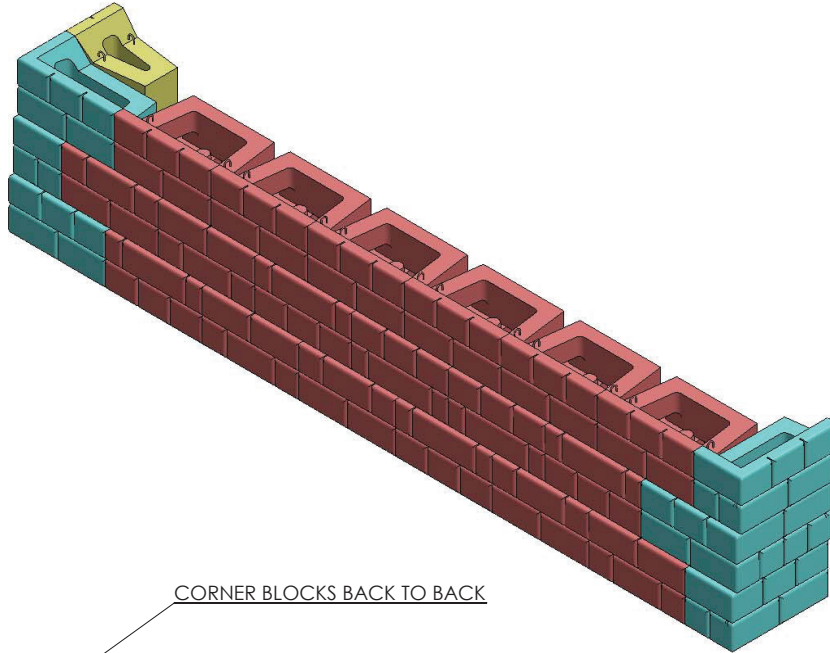


DRAWN BY	DATE
DAN BALLING	12/12/2013
16500 SOUTH 500 WEST BLUFFDALE, UTAH 84065 PHONE: (801) 571-2028	

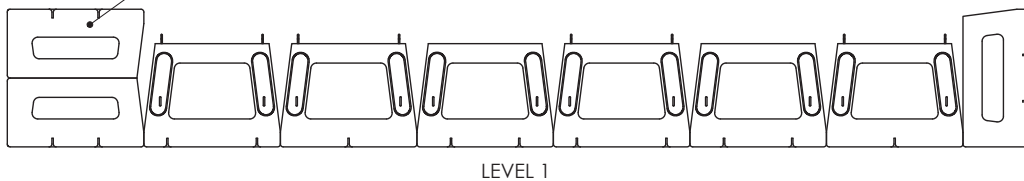
TITLE:	OUTSIDE CURVE
DWG NO.	WD-6
SCALE: 1: 40	SHEET 1 OF 1



## STRAIGHT FACE WITH SIMPLE 4' RETURNS

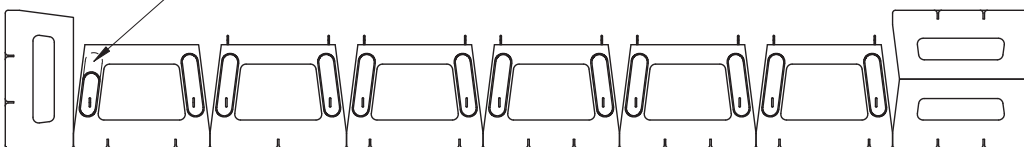


CORNER BLOCKS BACK TO BACK



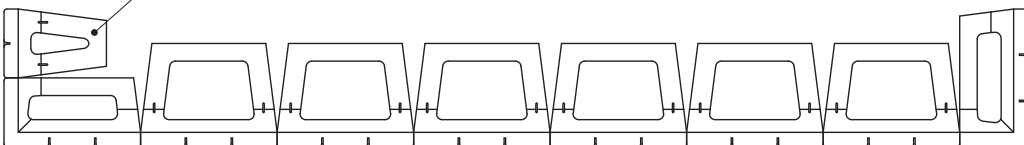
LEVEL 1

6-1/2" NUB BLOCKOUT NEEDED



LEVEL 2

HALF TOP BLOCK REQUIRES  
BLOCKOUT ON BLOCK BELOW

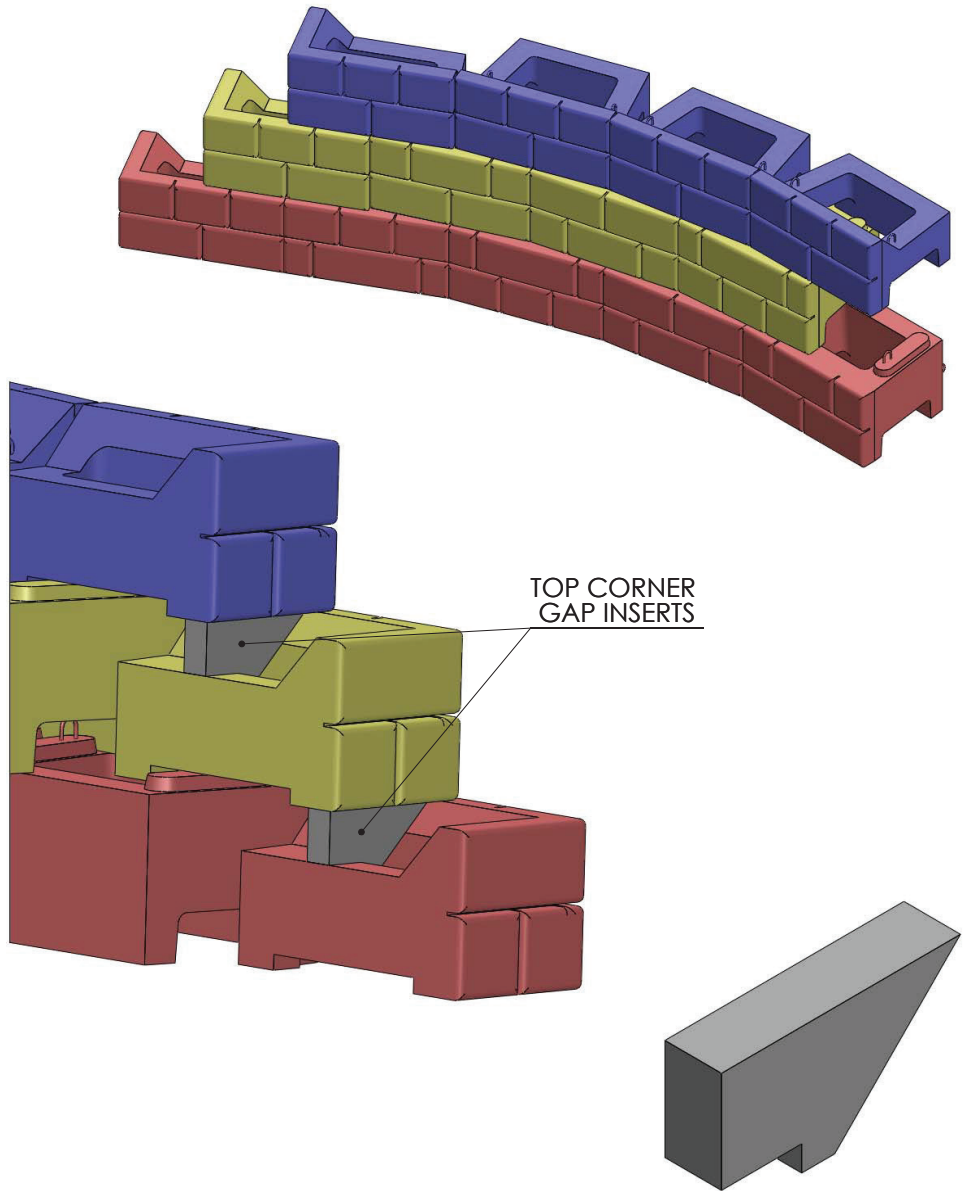


LEVEL 3



DRAWN BY	DATE	TITLE:
DAN BALLING	12/12/2013	4' RETURN
16500 SOUTH 500 WEST BLUFFDALE, UTAH 84065 PHONE: (801) 571-2028		DWG NO.
		WD-07
SCALE: 1: 4		SHEET 1 OF 1

## 2' STEP DOWN WITH TOP CORNER GAP INSERTS

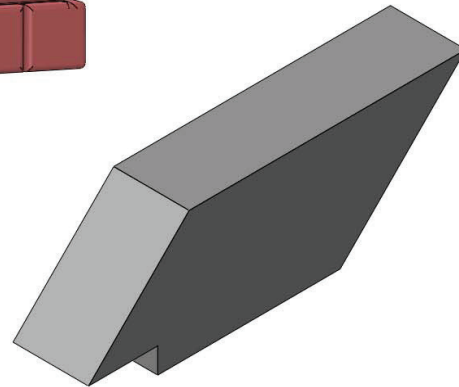
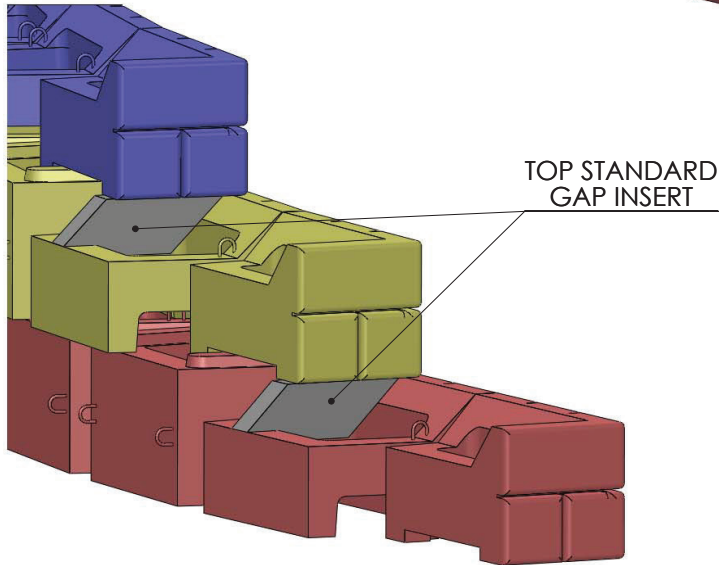
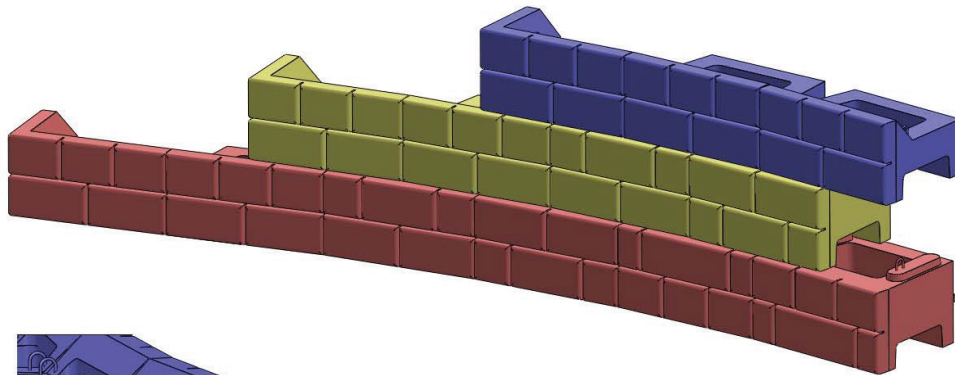


TOP CORNER GAP INSERT



DRAWN BY	DATE	TITLE:
DAN BALLING	12/12/2013	2' STEP DOWN
16500 SOUTH 500 WEST BLUFFDALE, UTAH 84065 PHONE: (801) 571-2028		DWG NO.
		WD-8
SCALE: 1: 40		SHEET 1 OF 1

## 6' STEP DOWN WITH TOP STANDARD GAP INSERT

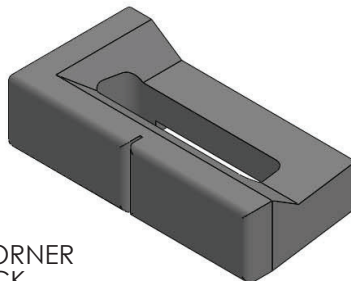
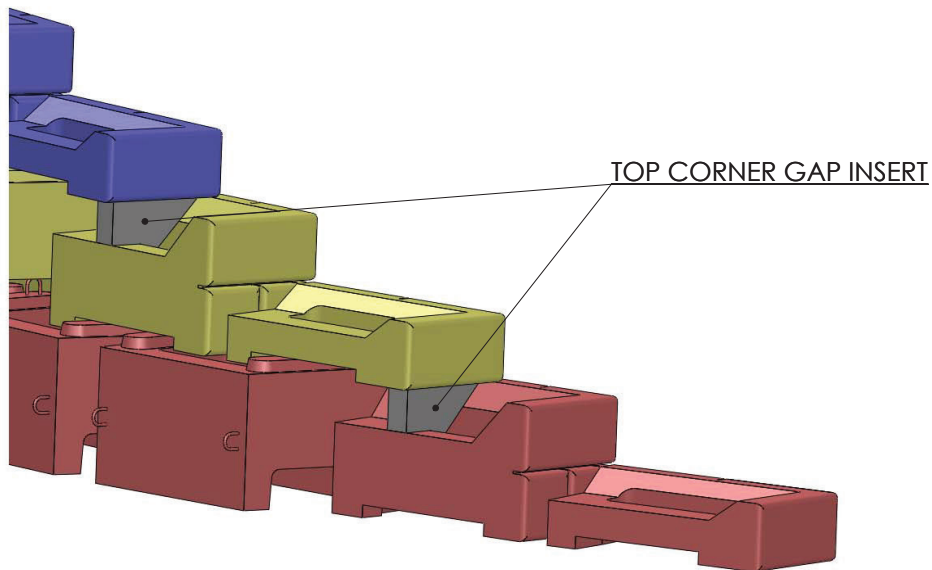
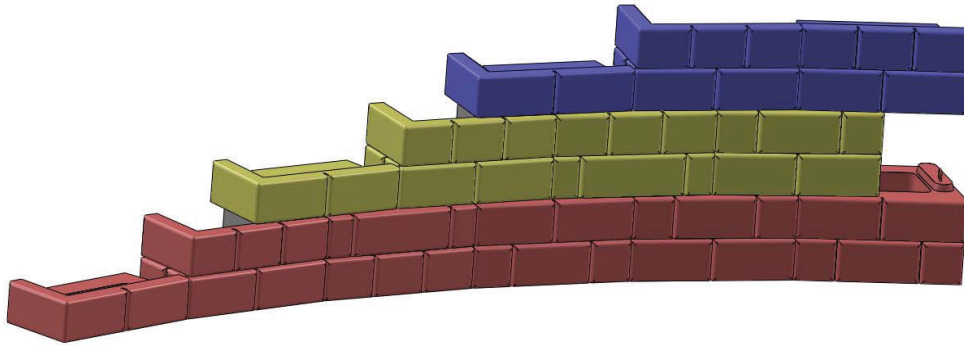


TOP STANDARD GAP INSERT

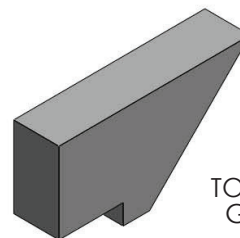


DRAWN BY	DATE	TITLE:
DAN BALLING	12/12/2013	6' STEP DOWN
16500 SOUTH 500 WEST BLUFFDALE, UTAH 84065 PHONE: (801) 571-2028		DWG NO.
		WD-9
SCALE: 1: 40		SHEET 1 OF 1

## 6' STEP DOWN WITH HALF-STEP BLOCK AND TOP CORNER GAP INSERT



HALF-STEP CORNER  
TOP BLOCK



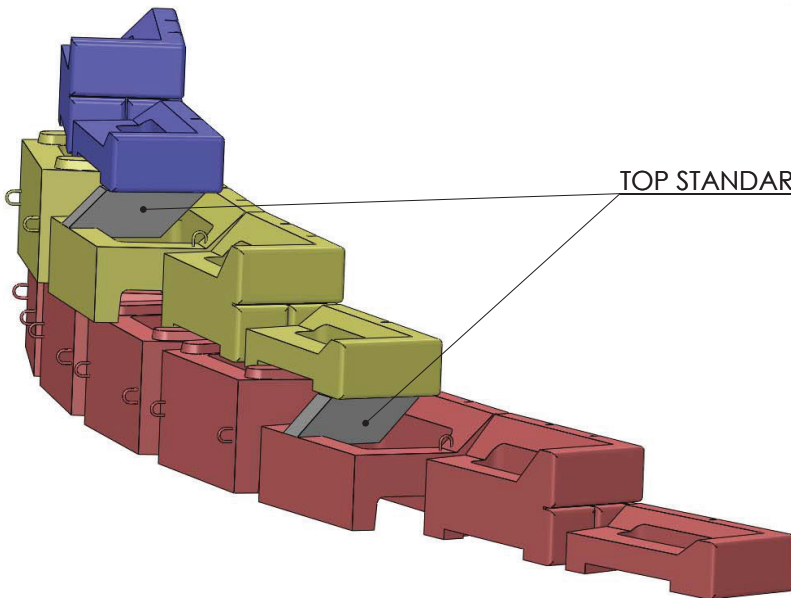
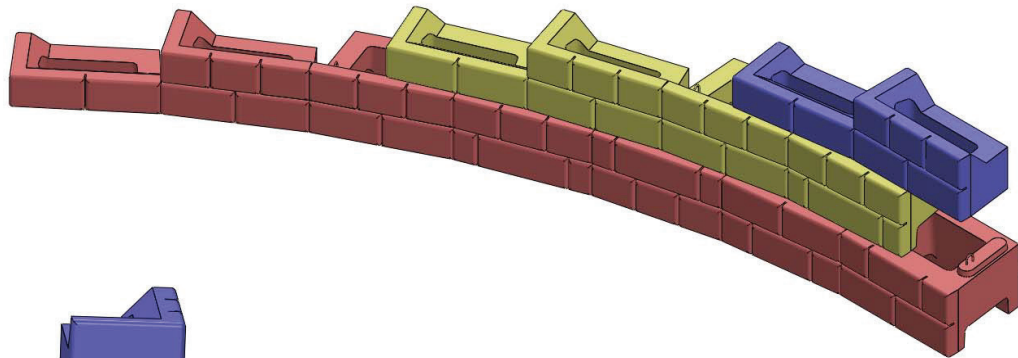
TOP CORNER  
GAP INSERT



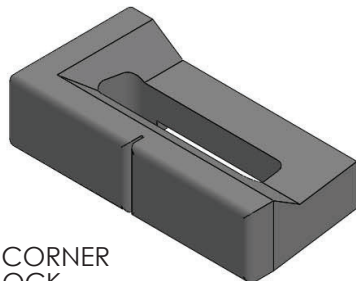
DRAWN BY	DATE	TITLE:
DAN BALLING	12/12/2013	6' STEP W/ HALF STEP BLOCK
16500 SOUTH 500 WEST BLUFFDALE, UTAH 84065 PHONE: (801) 571-2028		DWG NO.
		WD-10
SCALE: 1: 40		SHEET 1 OF 1



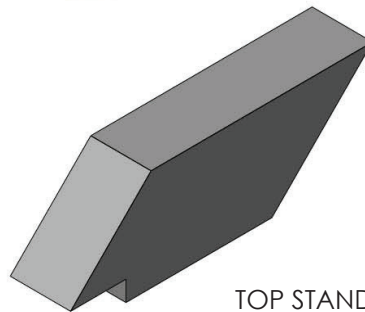
## 10' STEP DOWN WITH HALF-STEP BLOCK AND TOP STANDARD GAP INSERT



TOP STANDARD GAP INSERT



HALF-STEP CORNER  
TOP BLOCK

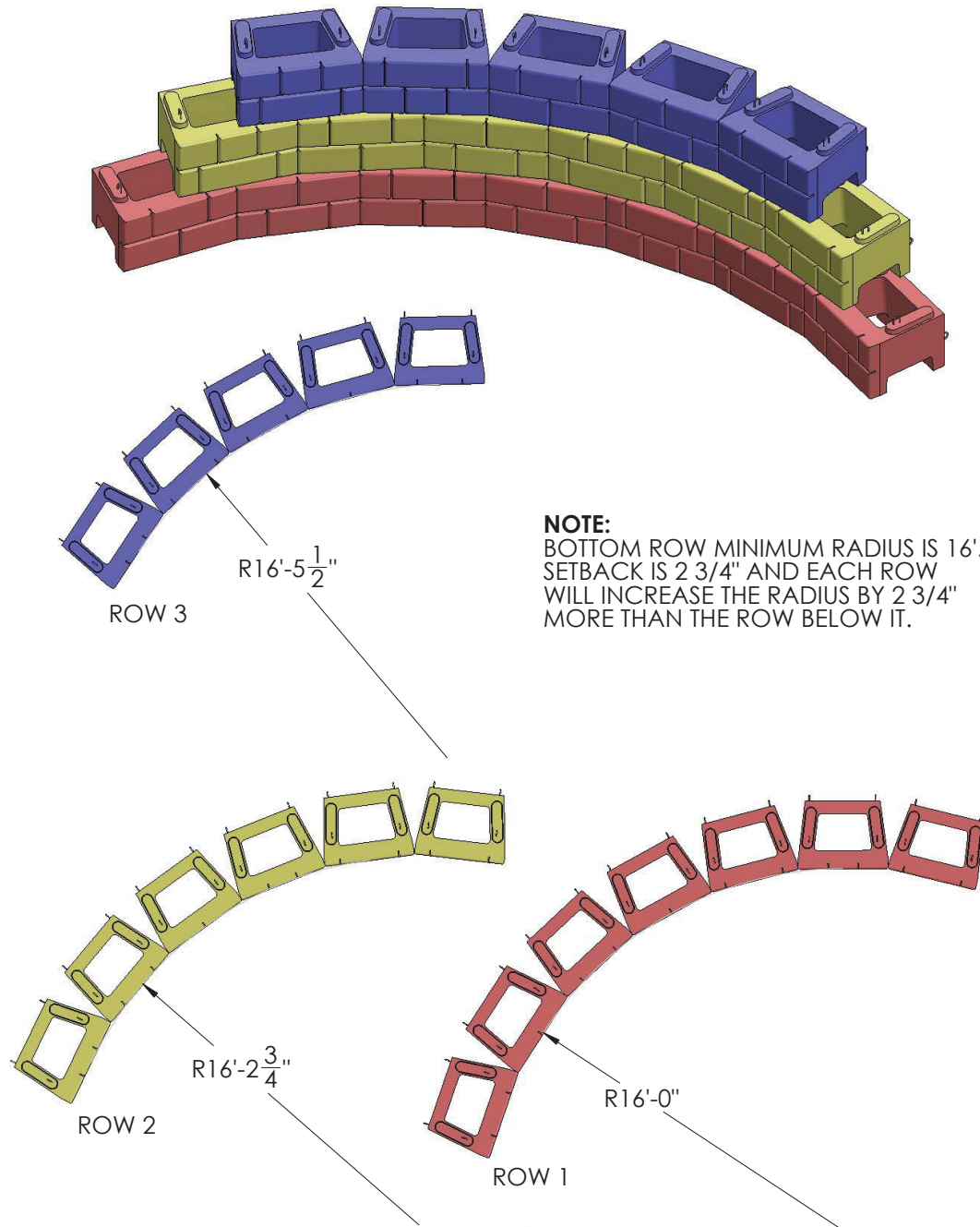


TOP STANDARD  
GAP INSERT



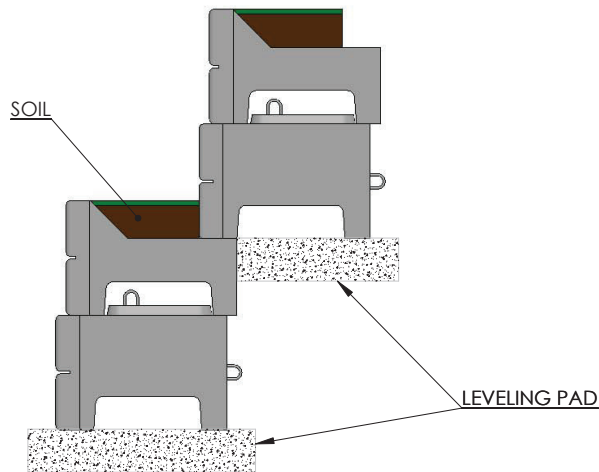
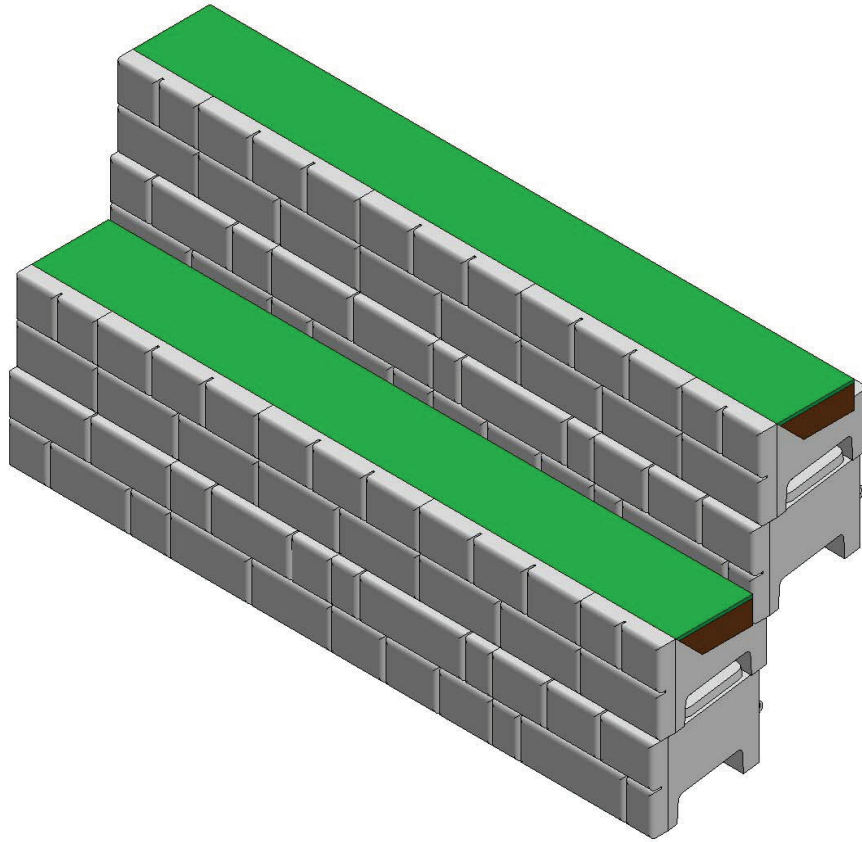
DRAWN BY	DATE	TITLE:
DAN BALLING	12/12/2013	10' STEP W/ HALF STEP BLOCK
16500 SOUTH 500 WEST BLUFFDALE, UTAH 84065 PHONE: (801) 571-2028		DWG NO.
		WD-11
SCALE: 1: 40		SHEET 1 OF 1

## INSIDE CURVE DETAIL



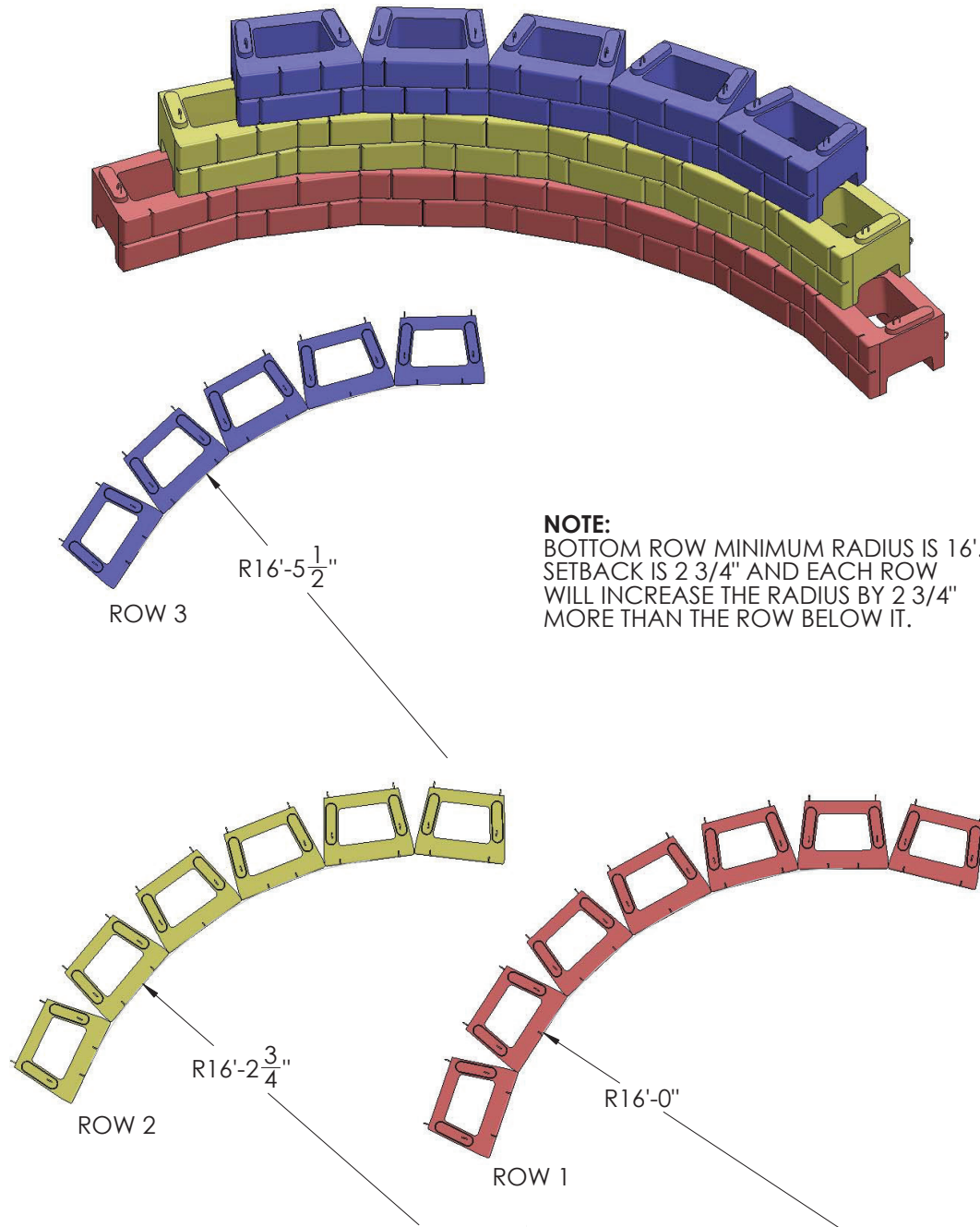
DRAWN BY	DATE
DAN BALLING	12/12/2013
16500 SOUTH 500 WEST BLUFFDALE, UTAH 84065 PHONE: (801) 571-2028	

TITLE:	INSIDE CURVE
DWG NO.	WD-12
SCALE: 1: 40	SHEET 1 OF 1



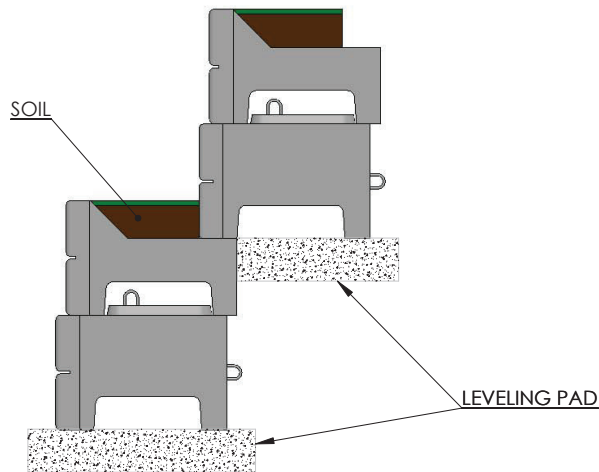
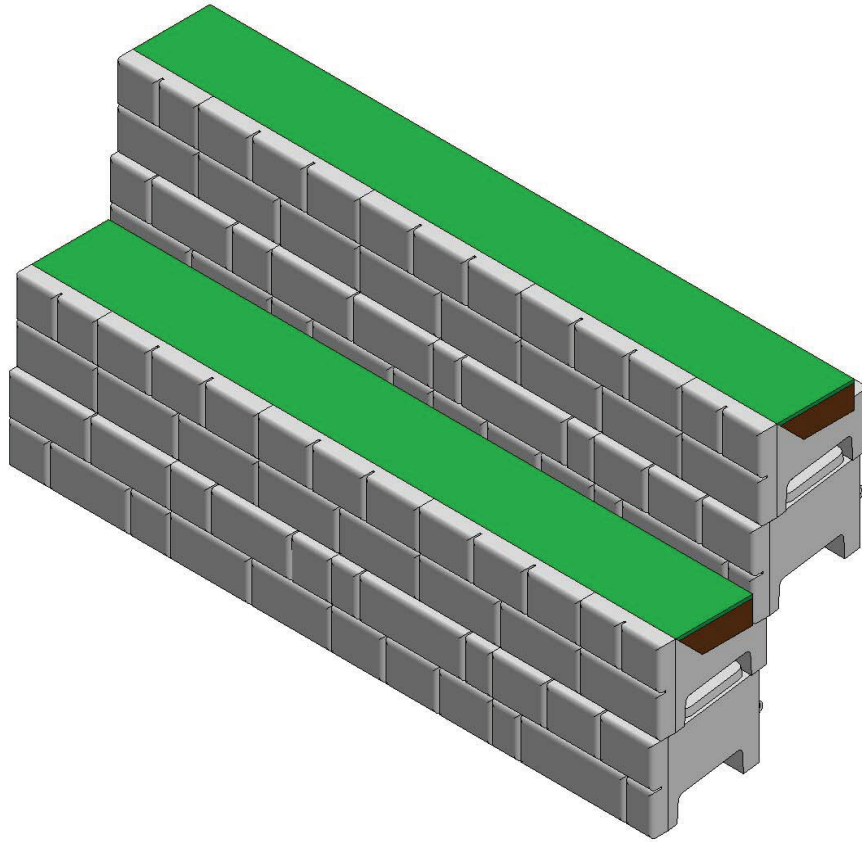
DRAWN BY	DATE	TITLE:
DAN BALLING	12/12/2013	PLANTER ROW WALL
16500 SOUTH 500 WEST BLUFFDALE, UTAH 84065 PHONE: (801) 571-2028		DWG NO.
		PR-01
SCALE: 1: 4		SHEET 1 OF 1

## INSIDE CURVE DETAIL

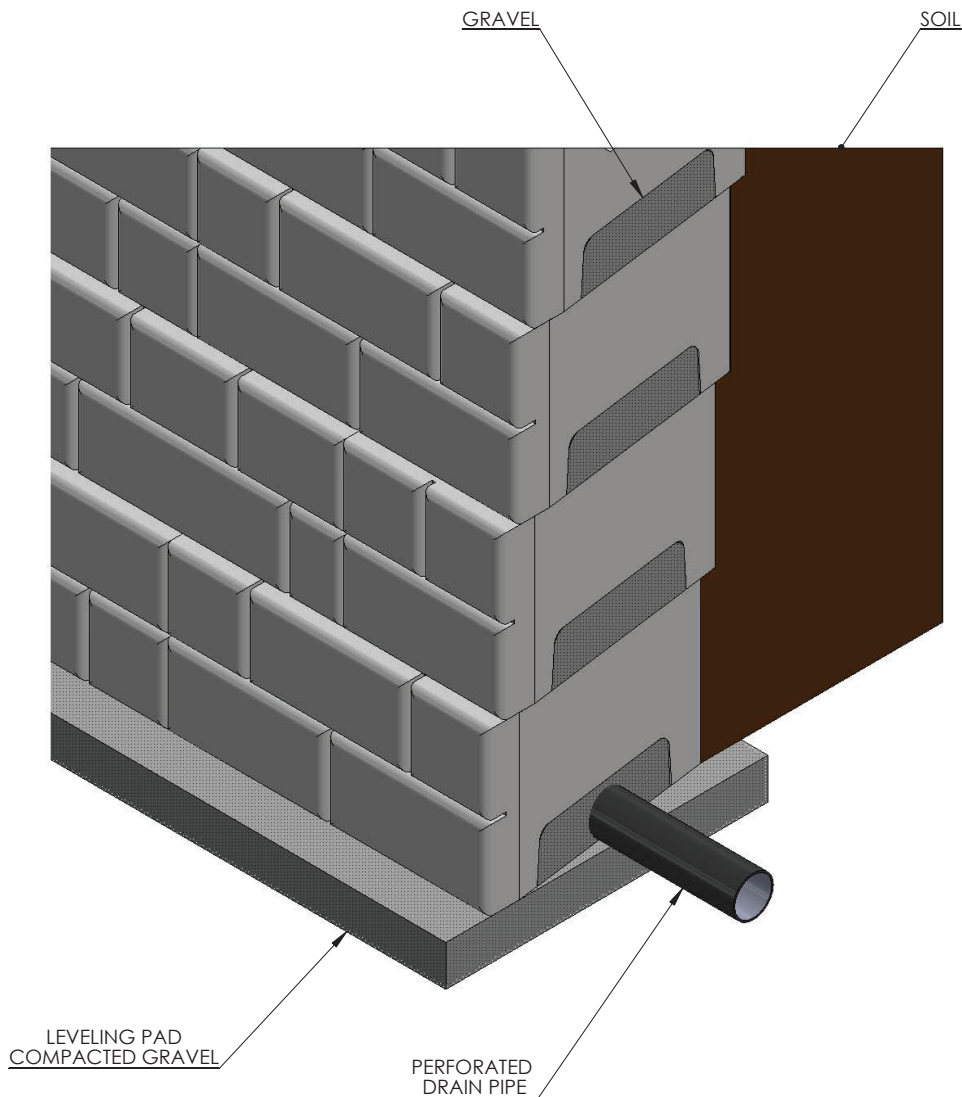


DRAWN BY	DATE	TITLE:
DAN BALLING	12/12/2013	INSIDE CURVE
16500 SOUTH 500 WEST BLUFFDALE, UTAH 84065 PHONE: (801) 571-2028		DWG NO.
		WD-12
SCALE: 1: 40		SHEET 1 OF 1





DRAWN BY	DATE	TITLE:
DAN BALLING	12/12/2013	PLANTER ROW WALL
16500 SOUTH 500 WEST BLUFFDALE, UTAH 84065 PHONE: (801) 571-2028		DWG NO.
		PR-01
SCALE: 1: 4		SHEET 1 OF 1

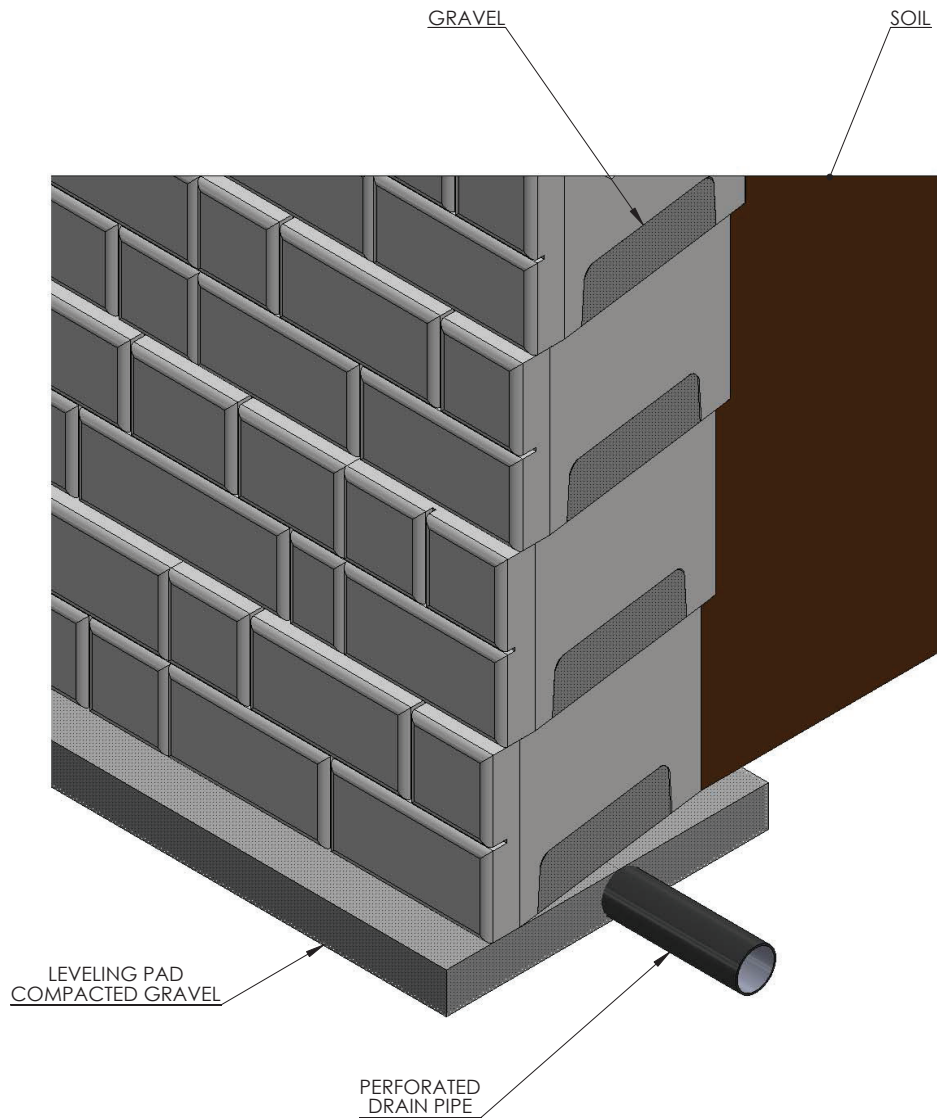


DRAIN PIPE IS PLACED INSIDE GAP AT THE BOTTOM OF THE BLOCK AND ON TOP OF THE LEVELING PAD THEN COVERED WITH GRAVEL.

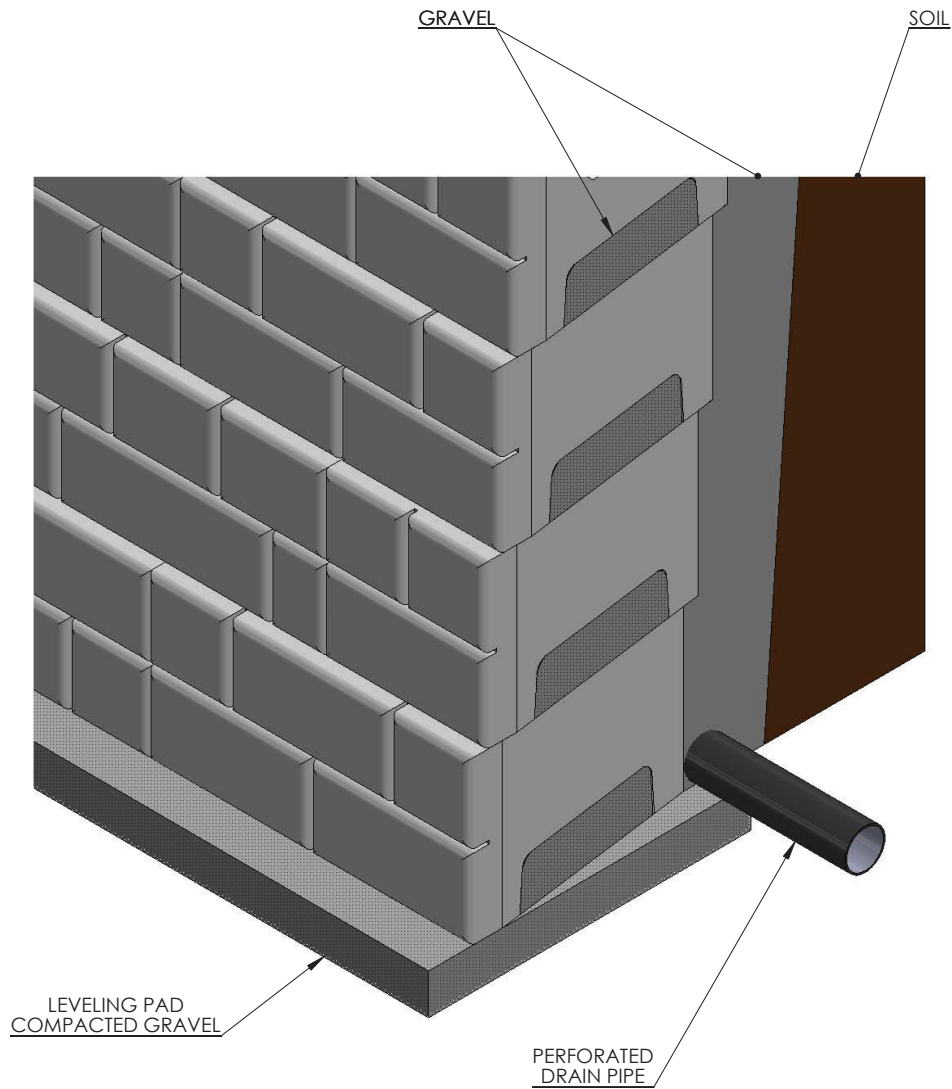


DRAWN BY	DATE
DAN BALLING	12/18/2013
16500 SOUTH 500 WEST BLUFFDALE, UTAH 84065 PHONE: (801) 571-2028	

TITLE:	DRAIN PLACEMENT-OPTION #1
DWG NO.	WD-16
SCALE: 1: 20	SHEET 1 OF 1



DRAWN BY	DATE	TITLE:
DAN BALLING	12/12/2013	DRAIN PLACEMENT-OPTION #2
16500 SOUTH 500 WEST BLUFFDALE, UTAH 84065 PHONE: (801) 571-2028		DWG NO.
		WD-17
SCALE: 1: 20		SHEET 1 OF 1



DRAIN PIPE IS PLACED BEHIND THE BLOCK AND ON TOP OF THE LEVELING PAD.  
THIS OPTION REQUIRES 1' OF LOOSE GRAVEL BEHIND THE WALL.  
IF DRAINAGE IS A MAJOR CONCERN FOR AN APPLICATION THIS OPTION  
MAY BE USED ALONG WITH OPTION 1 OR 2



DRAWN BY	DATE	TITLE:
DAN BALLING	12/18/2013	DRAIN PLACEMENT-OPTION #3
16500 SOUTH 500 WEST BLUFFDALE, UTAH 84065 PHONE: (801) 571-2028		DWG NO.
		WD-18
SCALE: 1: 20		SHEET 1 OF 1