

2020 Poole Bay 100
Offshore Powerboat Race
Race Instructions



2020 Poole Bay 100 Offshore Powerboat Race

Round 1 – UKOPRA World Championships

Offshore Classes 1,2,3E,3D,3C,3B, 4

Hosted by:

Poole Quay, Poole, Dorset BH15 1HD

Organised by:



Event Communications:

Kerry Bobin
+44 7973 632767
info@ukopra.co.uk

With Thanks to:



2020 Poole Bay 100
Offshore Powerboat Race
Race Instructions

Risk Statement:

Powerboat Racing is by its nature a dangerous sport and therefore inherently involves an element of risk.

By participating in or becoming involved either as a participant, team member or otherwise individuals agree and acknowledge that:

- (i) they are aware of the inherent risk involved in the sport and accept responsibility for exposing themselves to such inherent risk, including risks to their person, their property, drowning, hypothermia, collision injuries burns and other physical injuries as well as possible death
- (ii) they have satisfied themselves that they have the necessary skill and knowledge to take part in the event and deal with the conditions that may arise in the course of a race
- (iii) they will not participate in the event whilst under the undue influence of alcohol, drugs or whilst otherwise unfit to participate
- (iv) they are responsible for the safety of themselves their crew their boat and their property whether afloat or ashore
- (v) the management of their boat including insurance is solely their responsibility
- (vi) scrutineering does not constitute a condition survey of the boat and it is solely their responsibility to decide whether or not to start or to continue in any powerboat race.
- (vii) ensuring the efficiency and suitability of the helmets and racing vests worn is solely their responsibility
- (viii) the provision of a race management team, patrol boats and other volunteers by the event organisers does not relieve them of their responsibilities
- (ix) the provision of patrol boat cover is limited to such assistance particularly in extreme weather conditions as can be practically provided in the circumstances
- (x) to be bound by the conditions of the Race Entry Form and Racing Instructions
- (xi) they will accept the decisions of the organising committee and officials nominated by the organising committee.

Indemnity:

Participants in the event will be required on signing on to the event to save harmless and keep indemnified:

- (a) The owners of the premises at which the event is held;
- (b) The organising club and their respective officials, servants and agents; and,
- (c) The other boat owners, drivers, passengers or mechanics engaged in the meeting, (together with the "Indemnified Parties") AGAINST all actions, claims, costs, expenses and demands in respect of loss of or damage to the property of or personal injury sustained to the Indemnified Parties to the extent caused by the participants, their crew, their boat, their mechanics, support team, representatives or agents.

THE RESPONSIBILITY TO PARTICIPATE IN THIS RACE IS THE TEAM'S DECISION

COVID SECURE INFORMATION

This sporting event is being run whilst Government Guidelines exist regarding transmission of the CV-19 virus. Participation in the event does not impart any right of the participant to not adhere to Government directives. Please ensure that at all times you respect the social distancing guidelines of 2 metre spacing and if there is a need to reduce below ensure that a face covering is worn. Please do not congregate in large groups as we must at all times that a gathering of more

2020 Poole Bay 100
Offshore Powerboat Race
Race Instructions

than 30 people is avoided.

Our sport is blessed with being an open air sport with a large distance between participants and the only area where this may be compromised will be on the pontoons. Poole Quay Marina have been good enough to host our pre-race mooring of vessels, so please respect their Guideline

Scrutineering, sign-on and briefing functions will be carried out in the open air with 2 metre distancing exercised. All participants will be requested to confirm prior to racing whether they have had or are awaiting a test for/or are exhibiting any symptoms of the presence of CV-19.

We have fully trained medical personnel on site and available to advise anyone with concerns.

YOUR SAFETY HAS ALWAYS BEEN THE BYWORD OF UKOPRA WHETHER AT SEA OR NOT

2020 Poole Bay 100
Offshore Powerboat Race
Race Instructions

Event Timetable:

Saturday 29th August

From 10.00 Poole Quay Boats to arrive at Poole Quay by sea Launching location Cobbs Quay by arrangement.

From 10.00 – 13:00 Poole Quay Sign on and Scrutineering

12.00 Briefings – to be advised on day

14.00 Leave for muster

15.00 Start Line* Race 1 Start

Approximately 15.45 return to pontoons

Sunday 30th August

10.00 Briefings – to be advised on day

11.00 Leave for muster

12:00 Start Line* Race 2 Start

Approximately 13.30 return to pontoons

Competitors are advised that Soho by Day will serve morning coffees, snacks, meals and refreshments during the course of the weekend for participants without the requirement to pre book

2020 Poole Bay 100
Offshore Powerboat Race
Race Instructions

Tide Timetable:

| | | | | | |
|----------|-------|-------|-------|-------|-------|
| Friday | Low | | High | Low | High |
| | Time | 00:58 | 06:30 | 13:31 | 18:52 |
| | Depth | 1.21m | 1.79m | 1.35m | 1.90m |
| Saturday | Low | | High | Low | High |
| | Time | 02:11 | 07:39 | 14:37 | 19:43 |
| | Depth | 1.09m | 1.86m | 1.16m | 1.97m |
| Sunday | Low | | High | Low | High |
| | Time | 03:03 | 08:24 | 15:22 | 20:24 |
| | Depth | 0.94m | 1.94 | 1.04m | 2.04m |

2020 Poole Bay 100
Offshore Powerboat Race
Race Instructions

Race Officials:

| | |
|---------------------------|---|
| Officer of the Day | Kerry Bobin |
| Deputy Officer of the Day | Nikki Gray |
| Safety Officer | Martin Raby |
| Safety Team | Bob Turnbull/Nik Keyser/Kerry Bobin |
| Medical | Jerry Pocknell/John Atkins |
| Race Secretary | Elaine Bobin/Tracey Sheldon |
| Scrutineers | Dave Sheldon/Charlie Williams/Kerry Bobin |
| Chief Timekeeper | Nikki Gray |
| Pit Marshalls | Brian Pelham/Dave Sheldon |

Event Communications:

Please contact Kerry Bobin for information regarding this Event:

07973 632767

info@ukopra.co.uk

Race Day:

Safety VHF channel M37 (It is strongly recommended that all Class 3 craft carry a VHF radio, this may be of the handheld type).

Martin Raby:

07917 128150

2020 Poole Bay 100
Offshore Powerboat Race
Race Instructions

Rules and Regulations:

These races will be run as stated in these Race Instructions, 2019 UKOPRA Class rules/2020 classes and any other instructions issued before or at Drivers' Briefings or in Race Bulletins.

Racing rules: <https://www.ukopra.co.uk/wp-content/uploads/2019/04/UKOPRA-Rules-2019.pdf>

OPCGB in conjunction with the OOD, Safety Officer and Scrutineers have the right to refuse any boat which they consider unsuitable and/or which does not conform to the requirements of the present Rules.

OPCGB, the OOD and Safety Officer reserve the right to change these Instructions at any time for safety reasons, provided that any change will be in accordance with the current rules. Any changes will be notified to competitors in a Race Bulletin and, if possible, announced at Drivers' Briefing.

Any infringement of the Rules or of the Race Instructions, or instructions issued at Drivers' Briefings or in Race Bulletins may lead to disqualification or other penalties being applied by the OOD and / or OPCGB.

Race Licences:

All competitors will be required to hold an UKOPRA Offshore Powerboat Racing licence.

Licence application: <https://licenses.ukopra.co.uk/>

All race boats must be registered with UKOPRA.

Class rules requiring Immersion Certificates and/or Sea Survival and First Aid must produce valid evidence to the Technical Inspector.

Awards:

OPCGB Awards will be made for the placings of the total two races in the following UKOPRA classes.

Race crews must remain with their boats on return from second race where the awards will be made directly to your boat by OPCGB. No official prize giving will take place.

2020 Poole Bay 100
Offshore Powerboat Race
Race Instructions

The classes will be:

- Offshore 1
- Offshore 2
- Offshore 3B
- Offshore 3C
- Offshore 3D
- Offshore 3E
- Offshore 4

Competitors Responsibility:

Competitors must read the Risk Statement, Indemnity and safety information in these instructions.

THERE WILL BE NO SIGNING ON FORM AND THIS WILL BE REPLACED BY APPROACH FROM THE RACE OFFICIALS FOR COMPETITORS VERBAL AGREEMENT TO THE BELOW.

By signing the race entry form and the official signing on form at the event all competitors must be aware of:

- Collision regulations, SOLAS regulations.
- Start procedures
- Overtaking rules
- Flag procedures
- Emergency assist procedures
- Responsible for the choice and fit of helmet
- The choice and efficiency of a racing vest being the sole responsibility of the wearer
- Competitors are reminded that Safety takes precedence over racing at all times

2020 Poole Bay 100
Offshore Powerboat Race
Race Instructions

Event Safety Cover:

Safety cover will be provided by the race organisers in accordance with the event risk assessment and safety deployment plan.

A mobile unit on East Overcliff Drive, near the Cumberland Hotel.

Full details of safety cover will be given to all competitors at Drivers' Briefing.

MCA will be informed of the event and kept up to date with race information during the races.

Competitors are reminded that Classes Offshore 1&2 (Marathon) is for sea worthy offshore craft capable of undertaking independent extended offshore passages in unprotected waters.

All competitors running boats with cockpit safety cells and restraints are reminded that they are responsible for their own safety and that, in the event of a capsize, their survival depends on their ability to extract themselves from the boat.

Limited safety cover at the event may be able to assist, but all crews must accept that this assistance cannot be relied upon and should be considered as secondary to their own capacity for self-extraction.

Timing / Courses:

All marks will be observed either from land or sea.

Official Mark Boats will fly a flag to be described at Briefing.

All Offshore competitors using electronic chart plotters should enable the tracking function using settings suitable for recording their track throughout the race at an update rate of no less than one point per minute.

In the event of any dispute regarding their correct completion of the course, failure to make this tracking information available to the OOD or Race Jury may reduce the competitor's chance of successfully avoiding a penalty or disqualification.

2020 Poole Bay 100
Offshore Powerboat Race
Race Instructions

Retirement:

All competitors are reminded that they must inform the Event Safety Officer or, if this is not possible, a race official as soon as they retire from the race. Competitors are also reminded that, where practical, they must raise their ORANGE FLAG to indicate they have retired from the race. Retiring boats with canopies must turn on their strobe light.

In the event of retirement, boats must report immediately to 'Safety Control' on VHF Channel 37, or by telephone to the Event Safety Officer, or, if possible, to the nearest Safety/Observer boat.

When reaching port, they should immediately make contact with Race Administration in person, or by telephone to 'sign off'.

Any competitor calling for assistance via recognised distress procedures or from Safety Control will be considered to have retired.

Finishing:

When the leading boat in each race crosses the finish line (as described in the course details) they will be shown the CHECKERED FLAG, to be described at Briefing.
All following boats will then be flagged as finishers.

On receiving the FINISH FLAG, race boats must come off the plane after crossing the above line, and within 100 metres of such.

It is not permitted to continue racing after receiving the FINISH FLAG.

Boats should then turn to starboard, towards the centre of the course, and proceed towards the Committee Boat where they may be further instructions given.

When it is safe to do so, all race boats should make their way back to Poole Quay, observing all Harbour speed limits.

To qualify as a finisher, competitors must complete the correct course within the stated time limit, within the rules and in accordance with Race Instructions, Race Bulletins and any further instructions given at Drivers' Briefing.

Any competitor who disobeys instructions from the local authorities will be subject to civil prosecution and may be disqualified.

2020 Poole Bay 100
Offshore Powerboat Race
Race Instructions

Post-Race Declaration:

The Driver or Co-Driver must verbally sign off at race administration as soon as possible after returning to Poole Quay.

Failure to do so within one hour of returning to Poole Quay may result in exclusion from the results.

Protests against another competitor must be lodged by signing off time.

All Crew Members must sign off at race administration before the end of the event.

Post-Race Technical Inspection:

To be classified as a finisher:

- All crew members must be available with their craft and all relevant mandatory equipment required by class rules for post-race scrutineering if required, up to one hour after the posting of the results
- One or more engines may be checked, and fuel sampling may take place

Protest / Race Jury:

A Race Jury will be formed from UKOPRA members in the event of a protest.

A fee of £250 must be lodged in cash prior to the Protest Hearing to the Race Secretary.

The Race Jury's decision is full, final and binding.

There is no right of appeal or subsequent redress.

Race Cancellation:

OPCGB may cancel or postpone the event or a race at any time in the event of bad weather, equipment failure or otherwise.

The entry fee is not refundable unless specified by OPCGB.

Registration:

Sign-On will commence on Saturday 29TH August 2020 from 10:00am.

2020 Poole Bay 100
Offshore Powerboat Race
Race Instructions

Technical Inspection:

Pre-race Technical Inspection will take place in the pit area in accordance with class specific rules. Competitors are reminded of the following points:

- Competitors are responsible for the seaworthiness and condition of their own craft and that they are carrying all equipment required to race within the rules.
- All craft will receive a basic safety check over with random specific checks pre-race.
- Prior to racing all competitors are to sign to confirm that their craft comply with minimum class weight limits, craft may be weighed post-race, failure to meet minimum weight may result in disqualification from the results.

Fuelling Arrangements:

REFUELLING BETWEEN RACES AND POST RACE HAS BEEN ARRANGED WITH COBBS QUAY MARINA.

CREWS ARE TO LIAISE WITH KERRY BOBIN WHO WILL BE IN DIRECT CONTACT WITH FUEL BERTH AND YOU WILL BE RELEASED TO THE FUEL BERTH ONLY BY PRIOR ARRANGEMENT.

Competitors should arrive at Poole Quay fully fuelled for the race.

Be aware of the distance from Poole Quay to the start line and ensure boats have enough fuel to get out, race and return without assistance.

Competitors are reminded that no transfer of fuel is permitted in the Poole Quay wet pits.

All smoking, of any type, is prohibited in the pit and launching areas.

Practice:

There will be no official practice for this event.

2020 Poole Bay 100
Offshore Powerboat Race
Race Instructions

Noise and Speed Restrictions:

Competitors should familiarise themselves with and must obey the local regulations and Bye Laws relating to excessive speed and noise >> <https://www.phc.co.uk/>

Any competitor speeding will be disqualified.

All competitors are requested to refrain from starting their engines unless absolutely necessary before proceeding to the race.

Penalties:

Smoking of any kind, including vaping, in any non-designated area will incur a £250 penalty.

Any driver deemed by the OOD or Safety Officer to be driving in a dangerous or reckless manner will be disqualified from the race with no points awarded and referred to UKOPRA for further training.

2020 Poole Bay 100
Offshore Powerboat Race
Race Instructions

Courses and Procedures:

Race 1 Saturday

Offshore 1 & 2 will be Start Lap A, Lap C, Lap B, Lap C

Total: 43.4 NM

Offshore 3B,3C,3D, 3E & 4 will be Start Lap A, Lap C, Lap B

Total: 32.0 NM

Race 2 Sunday

Offshore 1 & 2 will be Start Lap A, Lap E, Lap C, Lap E, Lap B

Total: 88.8 NM

Offshore 3B,3C,3D,3E & 4 will be Start Lap A, Lap C, Lap C, Lap B, Lap C, Lap B

Total: 63.1 NM

Muster Area

- An area south west of Alum Outfall.
- Muster Anti clockwise.

Start Run

- All boats to form up in a line on the Port side of the start boat and 30 metres aft.
- Start Line When the fleet is in line the green flag will be dropped some distance West of the Bournemouth Pier line.
- Start Procedure as per UKOPRA rules.

Lap / Finish Line

- Between Bournemouth Pier Outfall Buoy and 30 Metres North of the Committee Boat, approximately 400 metres wide.

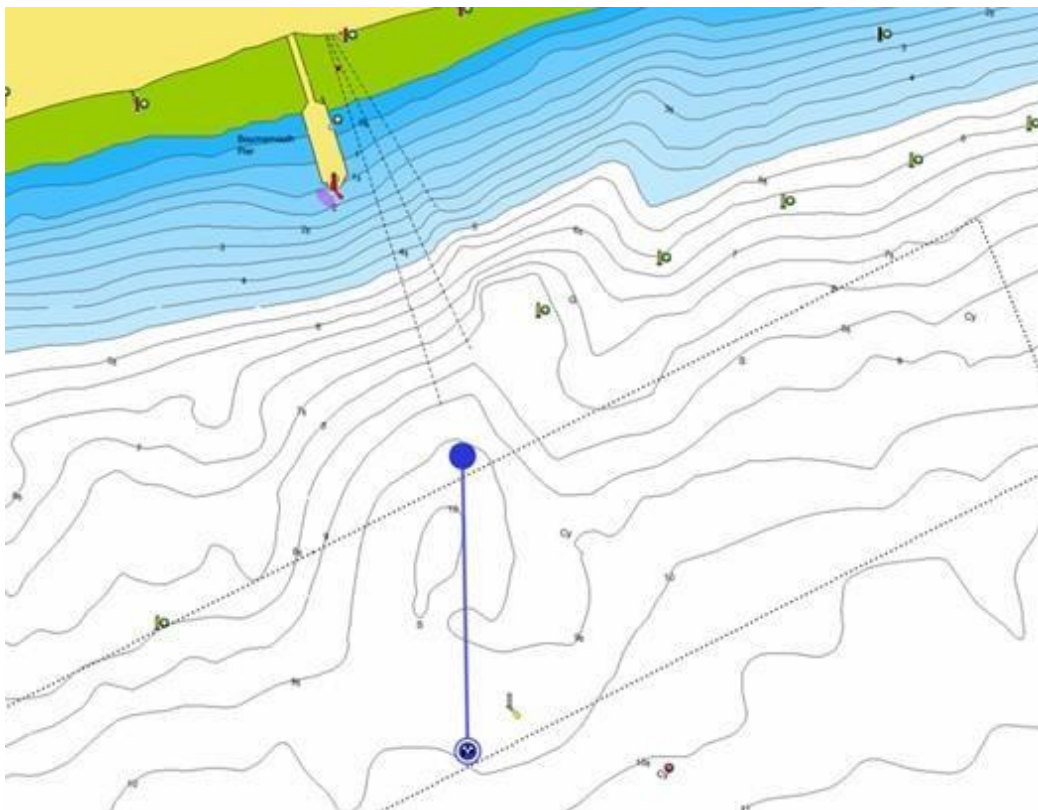
Start / Lap Line:

2020 Poole Bay 100 organised by Offshore Powerboat Club of Great Britain and sanctioned by
UKOPRA

2020 Poole Bay 100
Offshore Powerboat Race
Race Instructions

A line running due South from Bournemouth Pier Yellow Buoy to 30M north of the Committee boat

| | | Northerly | Westerly |
|-----------------------|-----------------|-----------|----------|
| Bournemouth Pier Buoy | Yellow Buoy | 50 42 605 | 1 52 303 |
| Committee Boat | To be described | 50 42 338 | 1 52 303 |

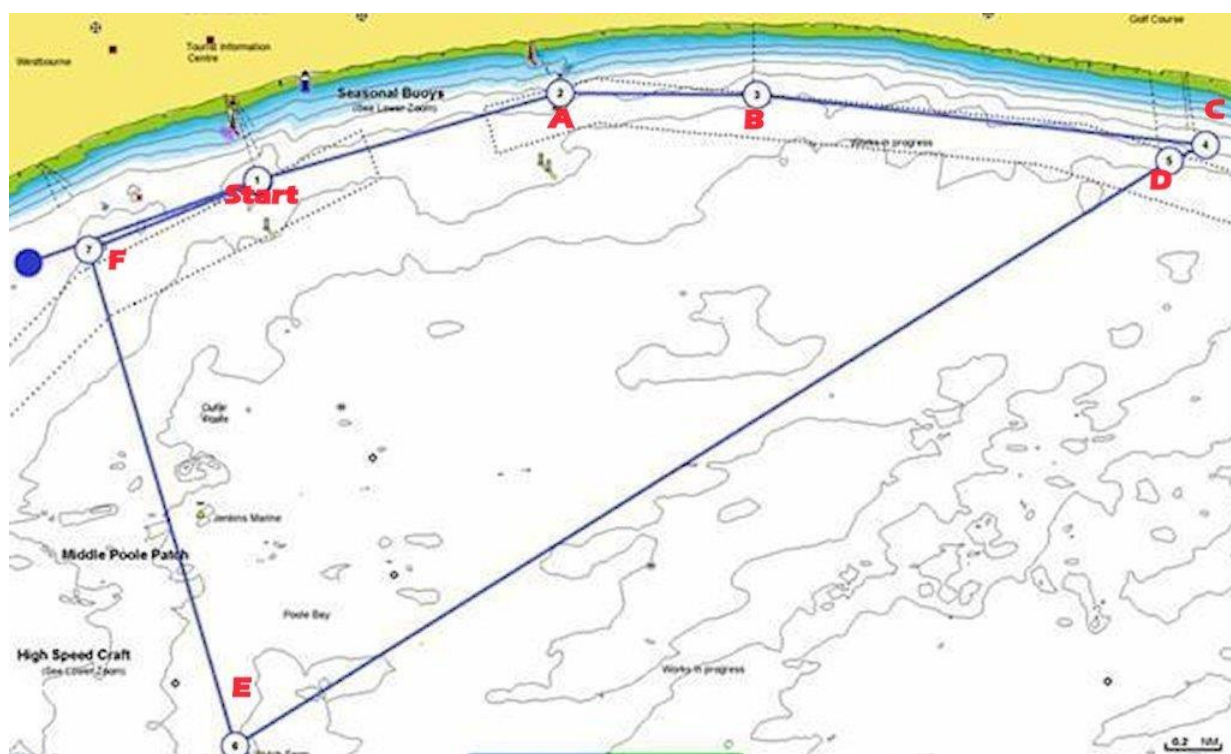


Start Lap A Class 3 (12.30 NM):

2020 Poole Bay 100 organised by Offshore Powerboat Club of Great Britain and sanctioned by UKOPRA

2020 Poole Bay 100
Offshore Powerboat Race
Race Instructions

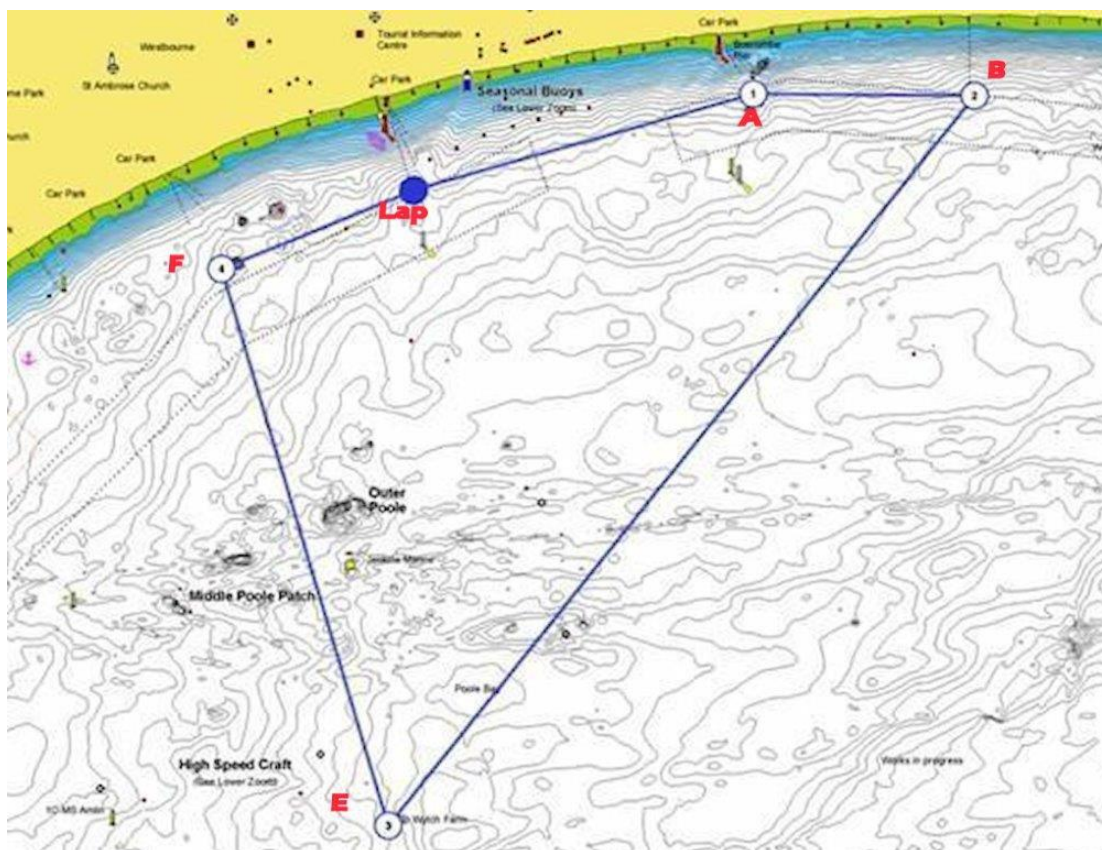
| | | | | | |
|-------------|---------------------|-------------|---|-----------|----------|
| Muster Area | W of Alum Outfall | Yellow Can | | 50 42 167 | 1 53 642 |
| Start Line | Bournemouth Pier | Yellow Buoy | P | 50 42 605 | 1 52 303 |
| Mark A | Boscombe Pier | Yellow Buoy | S | 50 42 891 | 1 50 400 |
| Mark B | Southbourne 1 | Yellow Can | S | 50 42 948 | 1 49 121 |
| Mark C | Southbourne 2 | Yellow Can | S | 50 42 747 | 1 46 246 |
| Mark D | Southbourne Outfall | Yellow Can | S | 50 42 679 | 1 46 487 |
| Mark E | Perenco Wytch Farm | Yellow Can | S | 50 40 304 | 1 52 450 |
| Mark F | Alum Outfall Buoy | Yellow Can | S | 50 42 320 | 1 53 401 |
| Lap Line | Bournemouth Pier | Yellow Buoy | P | | |



2020 Poole Bay 100
Offshore Powerboat Race
Race Instructions

Lap B (8.30 NM):

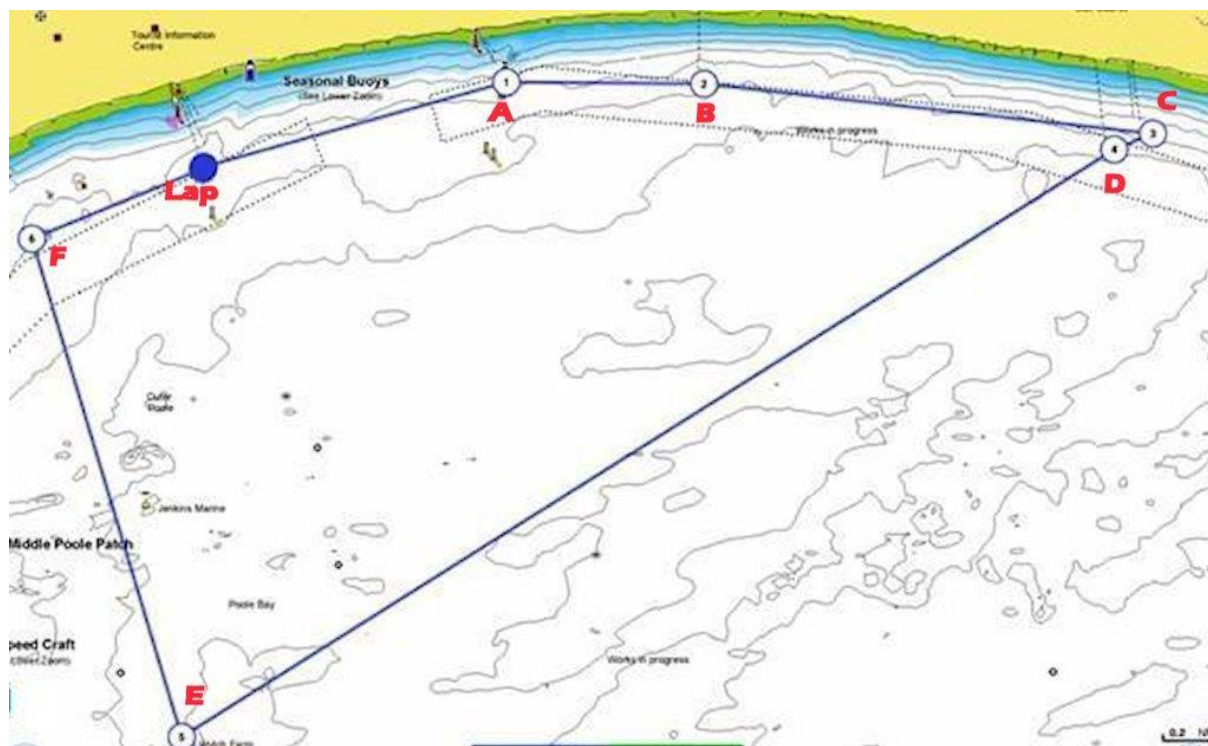
| | | | |
|------------|--------------------|-------------|---|
| Start Line | Bournemouth Pier | Yellow Buoy | P |
| Mark A | Boscombe Pier | Yellow Buoy | S |
| Mark B | Southbourne 1 | Yellow Can | S |
| Mark E | Perenco Wytch Farm | Yellow Can | S |
| Mark F | Alum Outfall Buoy | Yellow Can | S |
| Lap Line | Bournemouth Pier | Yellow Buoy | P |



2020 Poole Bay 100
Offshore Powerboat Race
Race Instructions

Start Lap C (11.40 NM):

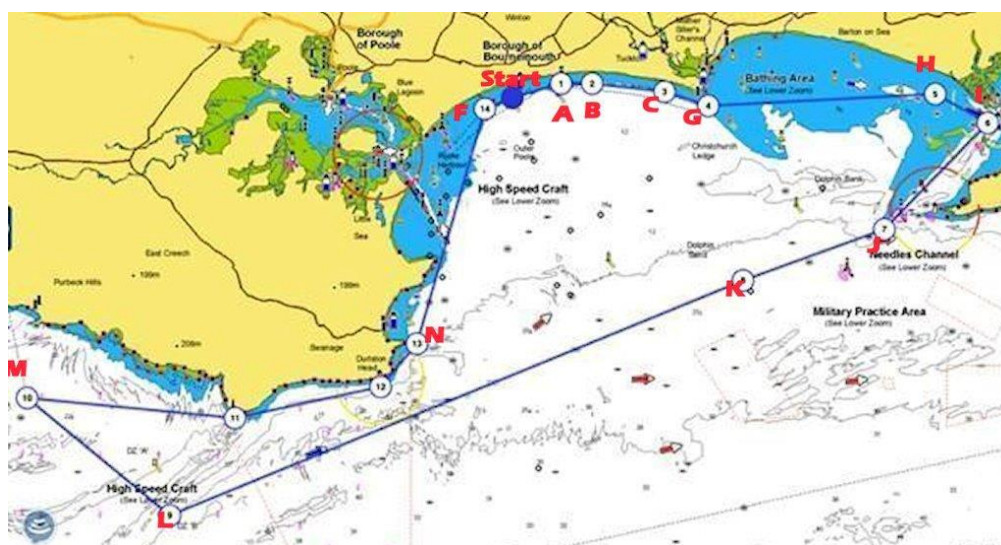
| | | | |
|------------|---------------------|-------------|---|
| Start Line | Bournemouth Pier | Yellow Buoy | P |
| Mark A | Boscombe Pier | Yellow Buoy | S |
| Mark B | Southbourne 1 | Yellow Can | S |
| Mark C | Southbourne 2 | Yellow Can | S |
| Mark D | Southbourne Outfall | Yellow Can | S |
| Mark E | Perenco Wytch Farm | Yellow Can | S |
| Mark F | Alum Outfall Buoy | Yellow Can | S |
| Lap Line | Bournemouth Pier | Yellow Buoy | P |



2020 Poole Bay 100
Offshore Powerboat Race
Race Instructions

Start Lap D (58.80 NM):

| | | | | | |
|-------------|----------------------|------------------|---|-----------|----------|
| Muster Area | W of Poole Rocks | Yellow Buoy | | | |
| Start Line | Bournemouth Pier | Yellow Buoy | P | | |
| Mark A | Boscombe Pier | Yellow Buoy | S | | |
| Mark B | Southbourne 1 | Yellow Can | S | | |
| Mark C | Southbourne 2 | Yellow Can | S | | |
| Mark G | Hengistbury Head | Yellow Can | P | 50 42 385 | 1 44 518 |
| Mark H | North Head | Green Buoy | S | 50 42 691 | 1 35 519 |
| Mark I | North East Shingles | Cardinal Mark | S | 50 41 961 | 1 33 409 |
| Mark J | South West Shingles | Red Buoy | S | 50 39 290 | 1 37 520 |
| Mark K | 3 Buoys | 3 X Yellow Buoys | S | 50 38 010 | 1 43 129 |
| Mark L | DZ B | Yellow Can | S | 50 32 047 | 2 6 013 |
| Mark M | Atomic, (Arish Mell) | Yellow Can | S | 50 35 032 | 2 11 627 |
| | St Alban's Head | Rock | P | | |
| | Anvil Point | Rock | P | | |
| Mark N | Peveril Ledge | Red Can | P | 50 36 409 | 1 56 099 |
| Mark F | Alum Outfall Buoy | Yellow Can | S | | |
| Lap Line | Bournemouth Pier | Yellow Can | P | | |



2020 Poole Bay 100
Offshore Powerboat Race
Race Instructions

Lap E (28.40 NM):

| | | | |
|------------|---------------------|---------------|---|
| Start Line | Bournemouth Pier | Yellow Buoy | P |
| Mark A | Boscombe Pier | Yellow Buoy | S |
| Mark B | Southbourne 1 | Yellow Can | S |
| Mark C | Southbourne 2 | Yellow Can | S |
| Mark G | Hengistbury Head | Yellow Can | P |
| Mark H | North Head | Green Buoy | S |
| Mark I | North East Shingles | Cardinal Mark | S |
| Mark J | South West Shingles | Red Buoy | S |
| Mark E | Perenco Wytch Farm | Yellow Can | S |
| Mark F | Alum Outfall Buoy | Yellow Can | S |
| Lap Line | Bournemouth Pier | Yellow Can | P |

