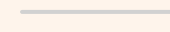
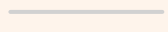



# Amira District



A modern, multi-story building with a curved facade and balconies, each featuring a wooden slat railing and a small garden. The building is set against a vibrant blue sky with scattered white clouds. In the foreground, a swimming pool is visible, surrounded by a lush garden of various tropical plants, including palm trees and smaller shrubs. The overall scene conveys a sense of balance and freedom.

BECAUSE TRUE BALANCE  
IS TO FLOW WITH FREEDOM

**Giada Development presents:**

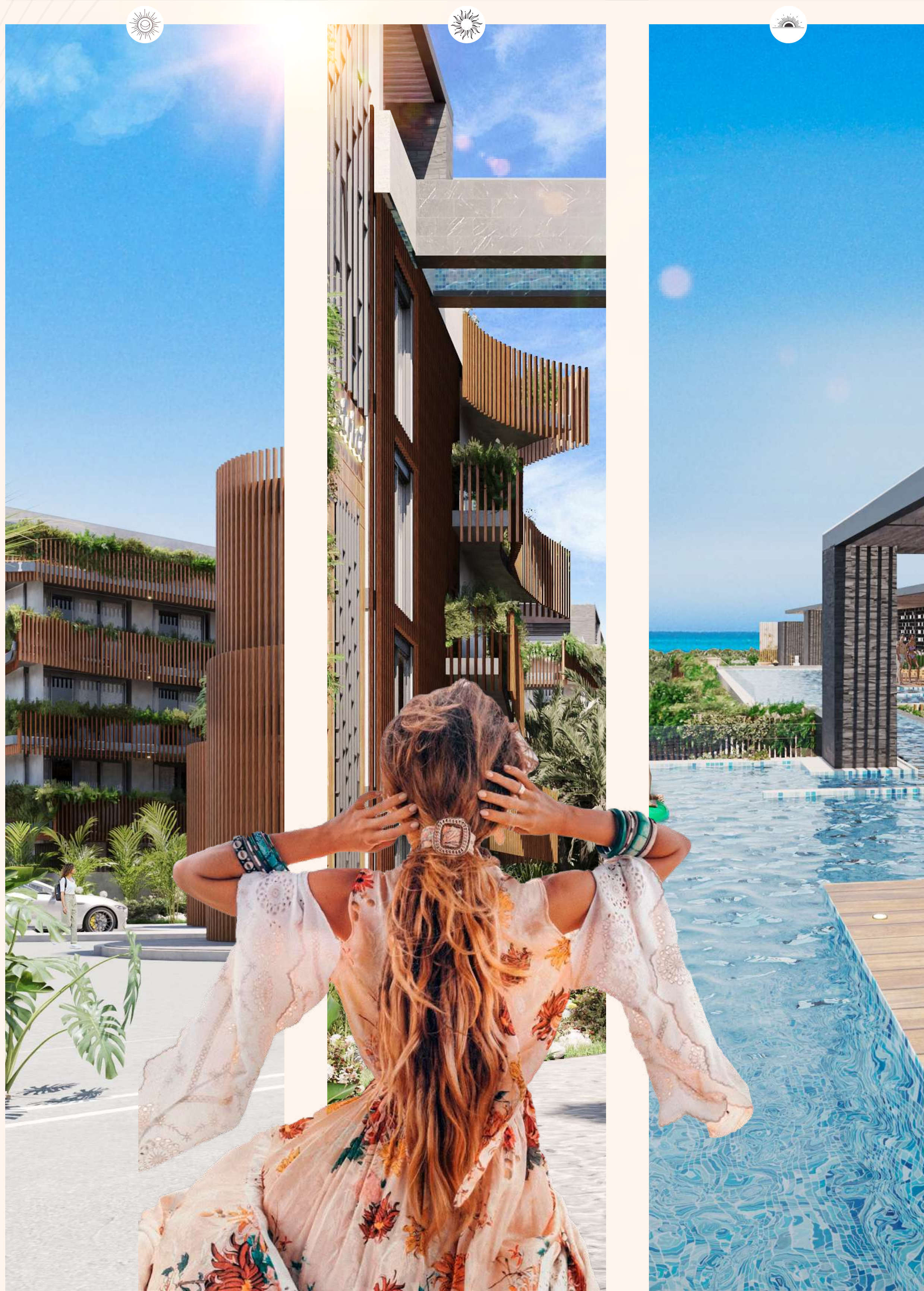
The most coveted private development in Tulum

Investment with the most capital gains

In perfect harmony with nature

A life to truly live it ...

**Amira District**



SELVA ZAMÁ

Amira District  
FASE I



## A privileged location in the Mexican Caribbean



Mexico

Yucatán Peninsula

Tulum

Selva Zamá

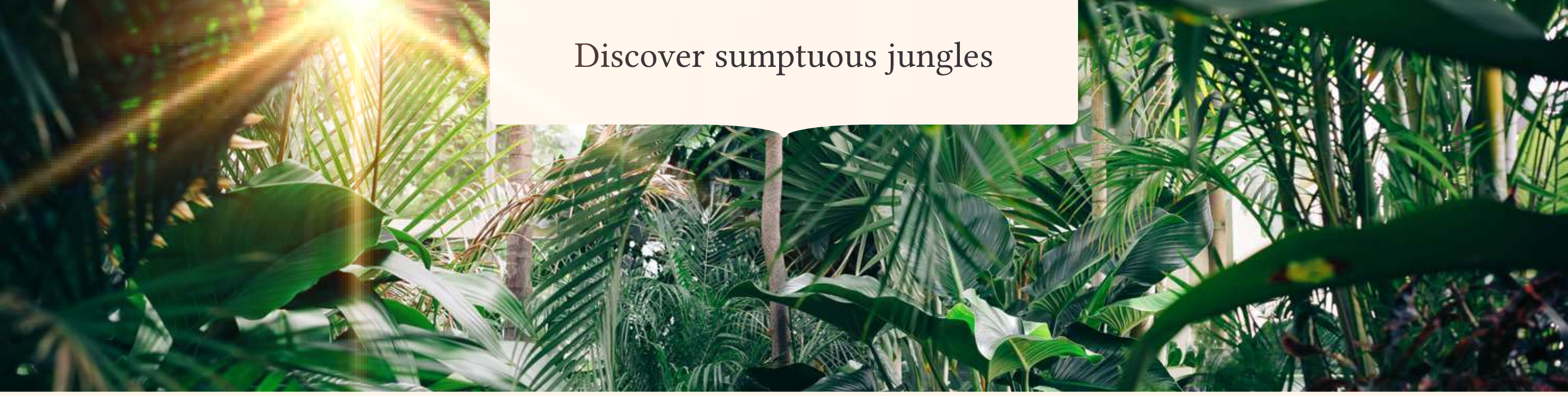
# Experience Tulum and it's surroundings



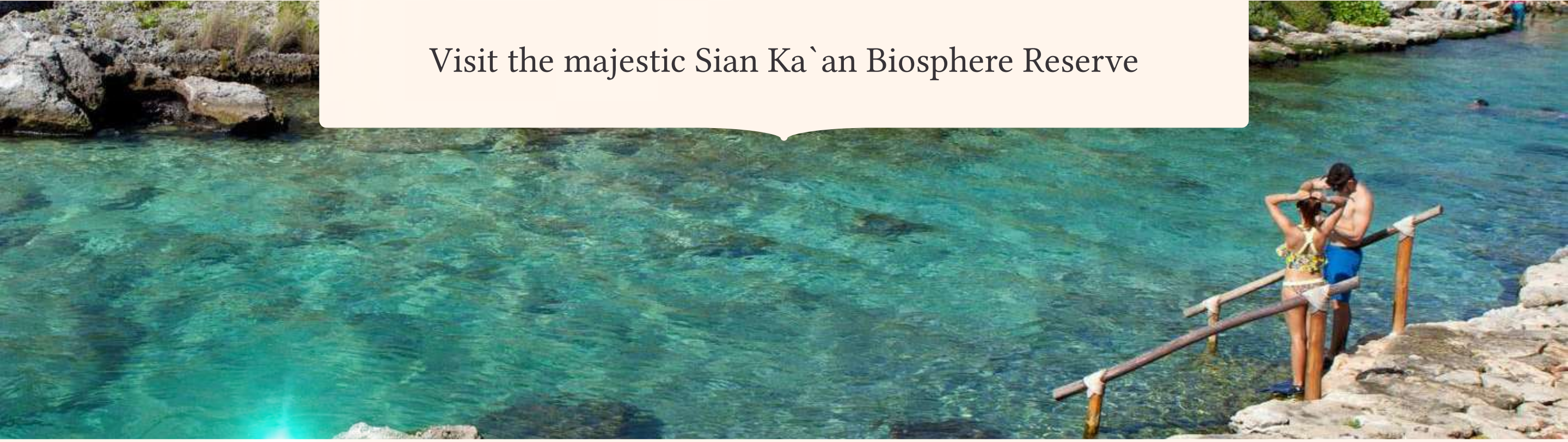
A five minute walk from a fine white sand beach and turquoise sea.



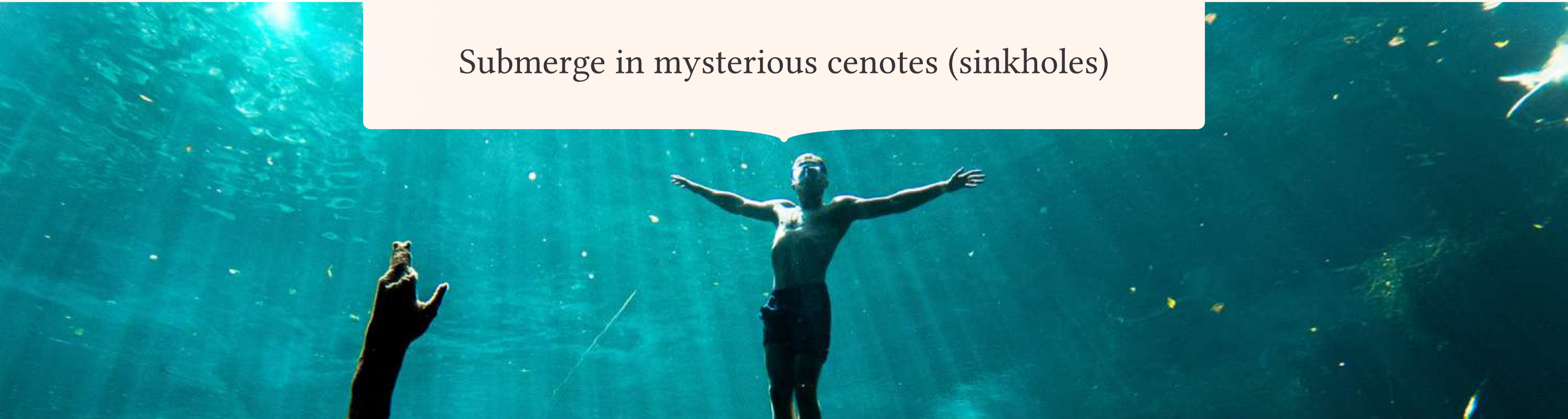
Discover sumptuous jungles



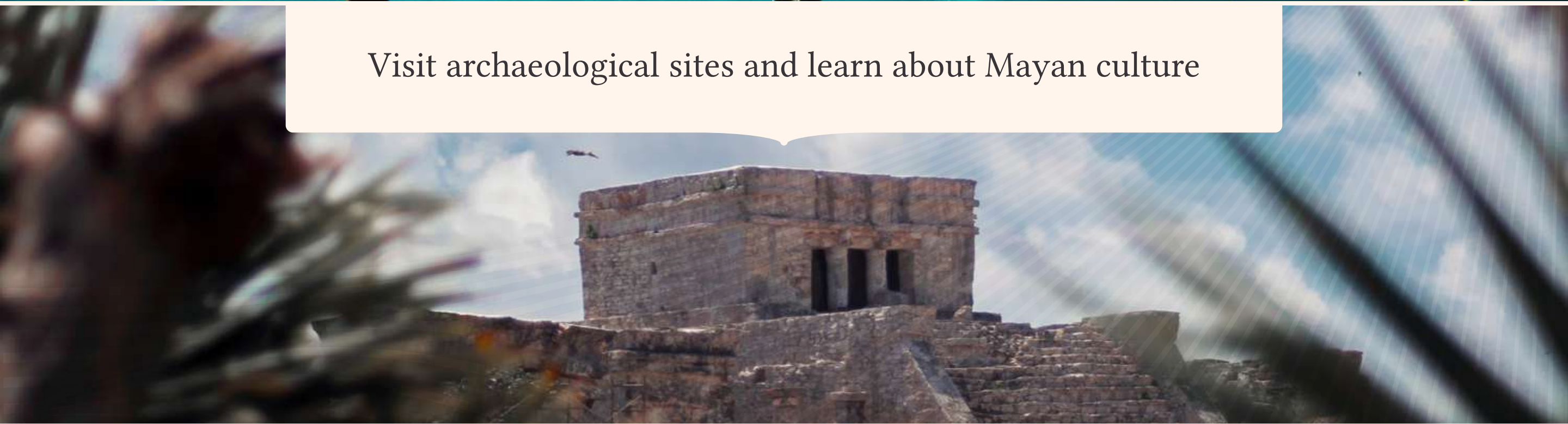
Visit the majestic Sian Ka'an Biosphere Reserve



Submerge in mysterious cenotes (sinkholes)



Visit archaeological sites and learn about Mayan culture



Discover vibrant Magical Towns (pueblos mágicos)





# Visualize the future



A new airport a few minutes from Tulum

The Mayan Train, connecting the Yucatan Peninsula



# A design that embraces what's natural



Innovative architectonic proposal, designed by DNA Barcelona.

Inspired by nature and it's organic forms.

A W A R D S



THE ARCHITECTURE COMMUNITY  
Winner of World Design Awards 2021

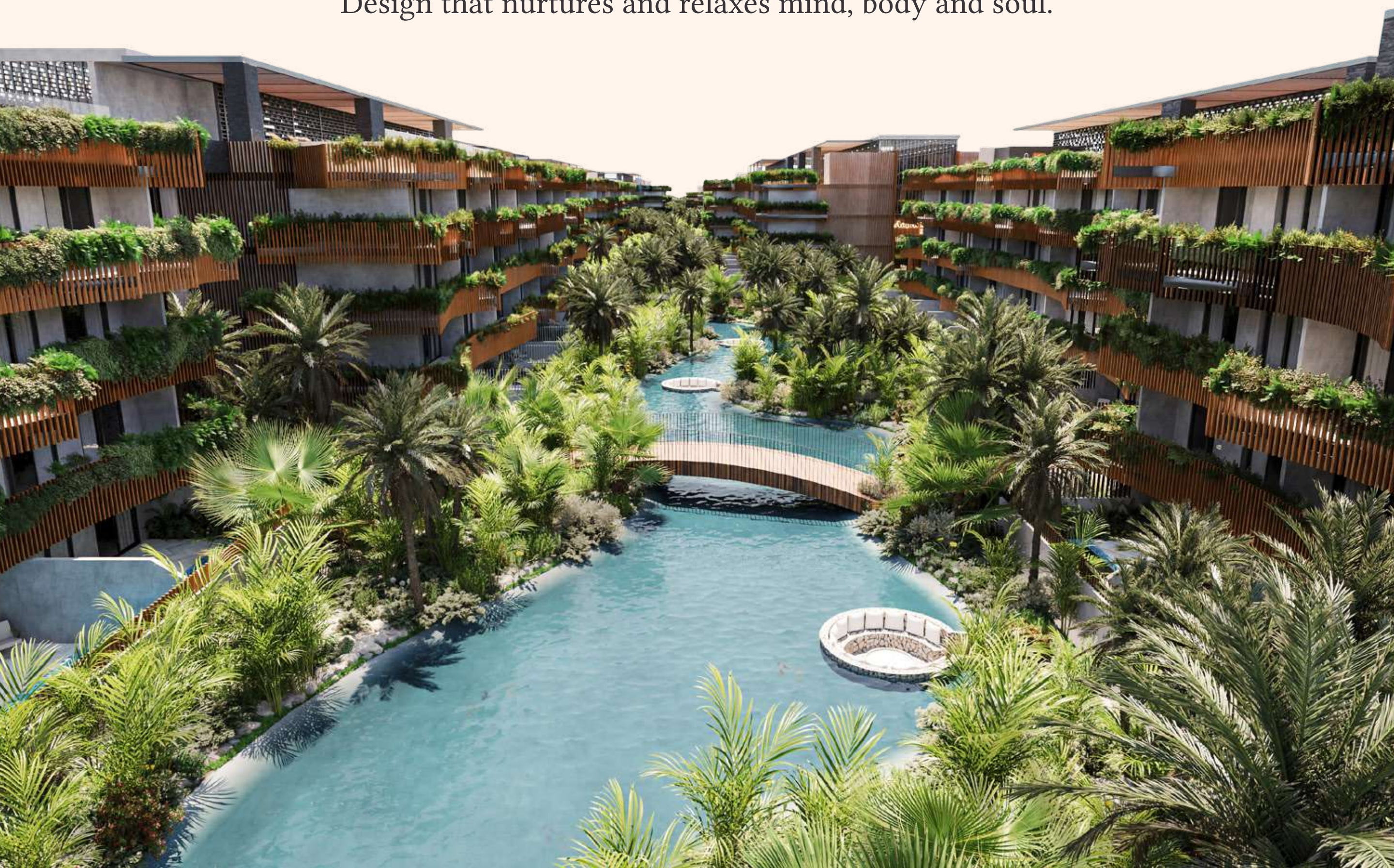


AWARDS.RE  
Rethinking The Future Awards 2021

Residential complex surrounded by vegetation, that provides unique sensations.

An oasis of peace and tranquility, inserted in a Jungle environment.

Design that nurtures and relaxes mind, body and soul.





## A renowned Developer you can trust

- ☉ - Proven experience with 16 developments in Tulum and the Mayan Riviera.
- ☉ - A philosophy of sustainability and support for the environment.
- ☉ - Efficient use of energy and natural resources.
- ☉ - Timely delivery and absolute client satisfaction.







# Takes Ecology and Sustainability into consideration



“Dry” construction system.



Uses low environmental impact natural materials.



Rainwater recovery for wastewater treatment.



Construction that blends with the forms of the natural environment.



Use of solar panels to save energy.



# Amenities

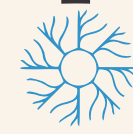
Environments to nurture  
**mind, body and soul.**

- ✧ Outdoor pools connected to a manmade river
- ✧ Rooftop pools, with connecting bridges
- ✧ Exclusive beach club
- ✧ Jungle gardens
- ✧ Hammock area
- ✧ Bonfire area
- ✧ Multipurpose pavilions
- ✧ Kids Club (daycare)
- ✧ Gym / Yoga
- ✧ Spa
- ✧ Bar
- ✧ Restaurant
- ✧ Laundry
- ✧ Internet in common areas
- ✧ 24/7 security
- ✧ Concierge
- ✧ Parking





## Cool and quiet spaces



Close to the sea: sea breeze that brings humidity.

Private and secure complex.

Orientation and separation of buildings.

Balconies with endemic vegetation.

Crossed ventilation.

Wall insulation system

Double glass pane PVC windows.



# Typologies

Make your space a sensory retreat

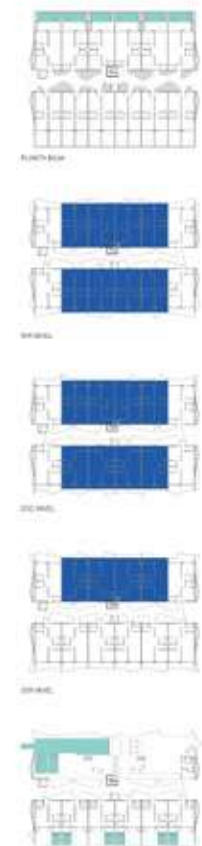
DEPARTAMENTO TIPO  
**1 HABITACIÓN**  
VISTA PERSPECTIVA  
TIPOLOGÍA MAR



DEPARTAMENTO TIPO  
**1 HABITACIÓN GARDEN**  
VISTA PERSPECTIVA  
TIPOLOGÍA MAR



DEPARTAMENTO TIPO  
**2 HABITACIONES**  
VISTA PERSPECTIVA  
TIPOLOGÍA MAR



DEPARTAMENTO TIPO  
**2 HABITACIONES ESQUINA**  
VISTA PERSPECTIVA  
TIPOLOGÍA MAR



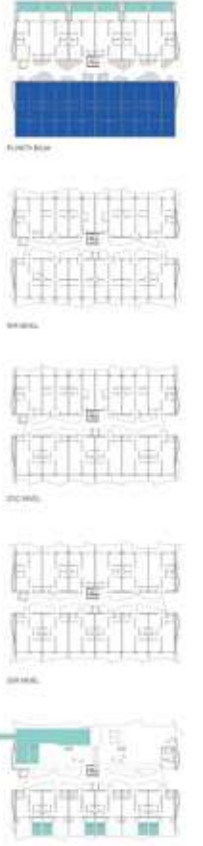
DEPARTAMENTO TIPO  
**PENTHOUSE**  
VISTA PERSPECTIVA  
TIPOLOGÍA MAR



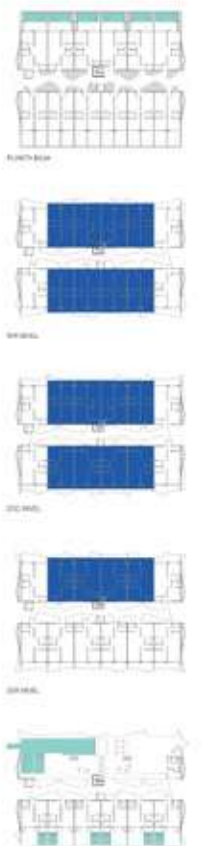
DEPARTAMENTO TIPO  
**1 HABITACIÓN**  
VISTA PERSPECTIVA  
TIPOLOGÍA SELVA



DEPARTAMENTO TIPO  
**1 HABITACIÓN GARDEN**  
VISTA PERSPECTIVA  
TIPOLOGÍA SELVA



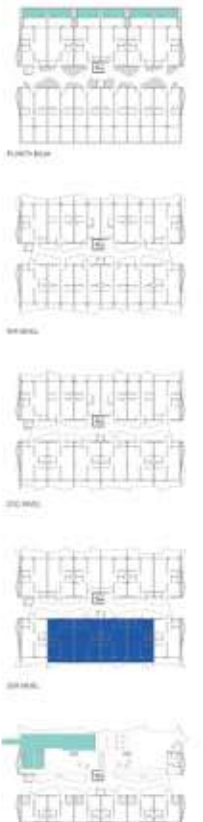
DEPARTAMENTO TIPO  
**2 HABITACIONES**  
VISTA PERSPECTIVA  
TIPOLOGÍA SELVA



DEPARTAMENTO TIPO  
**2 HABITACIONES ESQUINA**  
VISTA PERSPECTIVA  
TIPOLOGÍA SELVA



DEPARTAMENTO TIPO  
**PENTHOUSE**  
VISTA PERSPECTIVA  
TIPOLOGÍA SELVA



DEPARTAMENTO TIPO  
**PENTHOUSE ESQUINA**

VISTA PERSPECTIVA  
TIPOLOGIA MAR



DEPARTAMENTO TIPO  
**PENTHOUSE ESQUINA**

VISTA PERSPECTIVA  
TIPOLOGIA SELVA

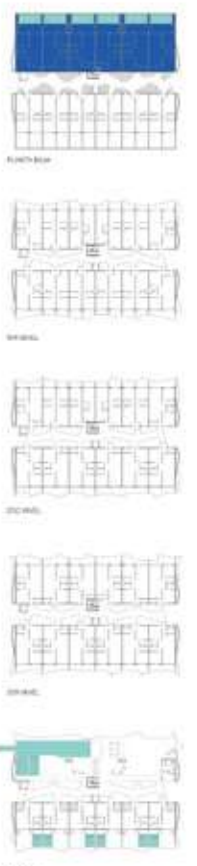


DEPARTAMENTO TIPO  
**2 HABITACIONES SWIMUP**

VISTA PERSPECTIVA  
TIPOLOGIA MAR



**SOLD OUT**

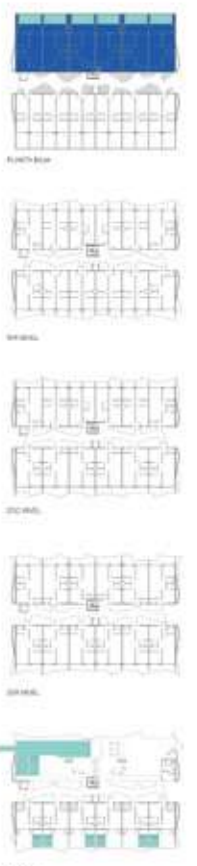


DEPARTAMENTO TIPO  
**2 HABITACIONES SWIMUP**

VISTA PERSPECTIVA  
TIPOLOGIA SELVA



**SOLD OUT**



DEPARTAMENTO TIPO  
**PENTHOUSE ROOF ESQUINA**

VISTA PERSPECTIVA  
TIPOLOGIA MAR



DEPARTAMENTO TIPO  
**PENTHOUSE ROOF ESQUINA**

VISTA PERSPECTIVA  
TIPOLOGIA SELVA



DEPARTAMENTO TIPO  
**PENTHOUSE ROOF**

VISTA PERSPECTIVA  
TIPOLOGIA MAR



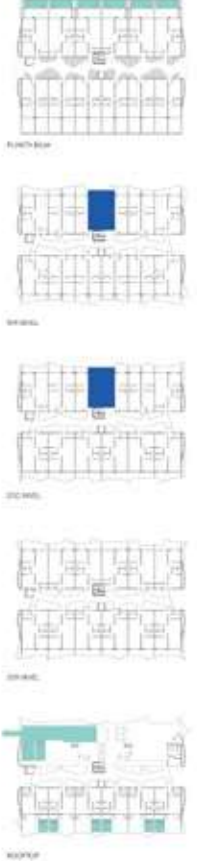
DEPARTAMENTO TIPO  
**PENTHOUSE ROOF**

VISTA PERSPECTIVA  
TIPOLOGIA SELVA



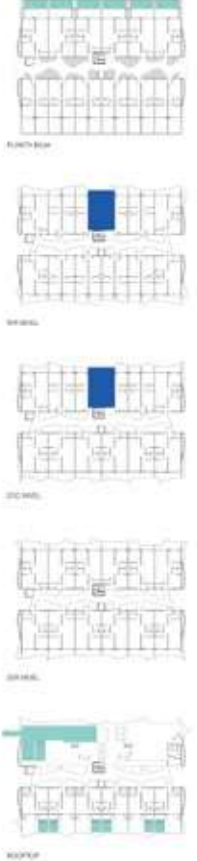
DEPARTAMENTO TIPO  
**ESTUDIO**

VISTA PERSPECTIVA  
TIPOLOGIA MAR



DEPARTAMENTO TIPO  
**ESTUDIO**

VISTA PERSPECTIVA  
TIPOLOGIA SELVA





Amira (“Princess” in Arabic)

is the crown jewel of

Giada Group and Giada Development

Amira District is for you

Live in luxury on the beach

Really live ...

