

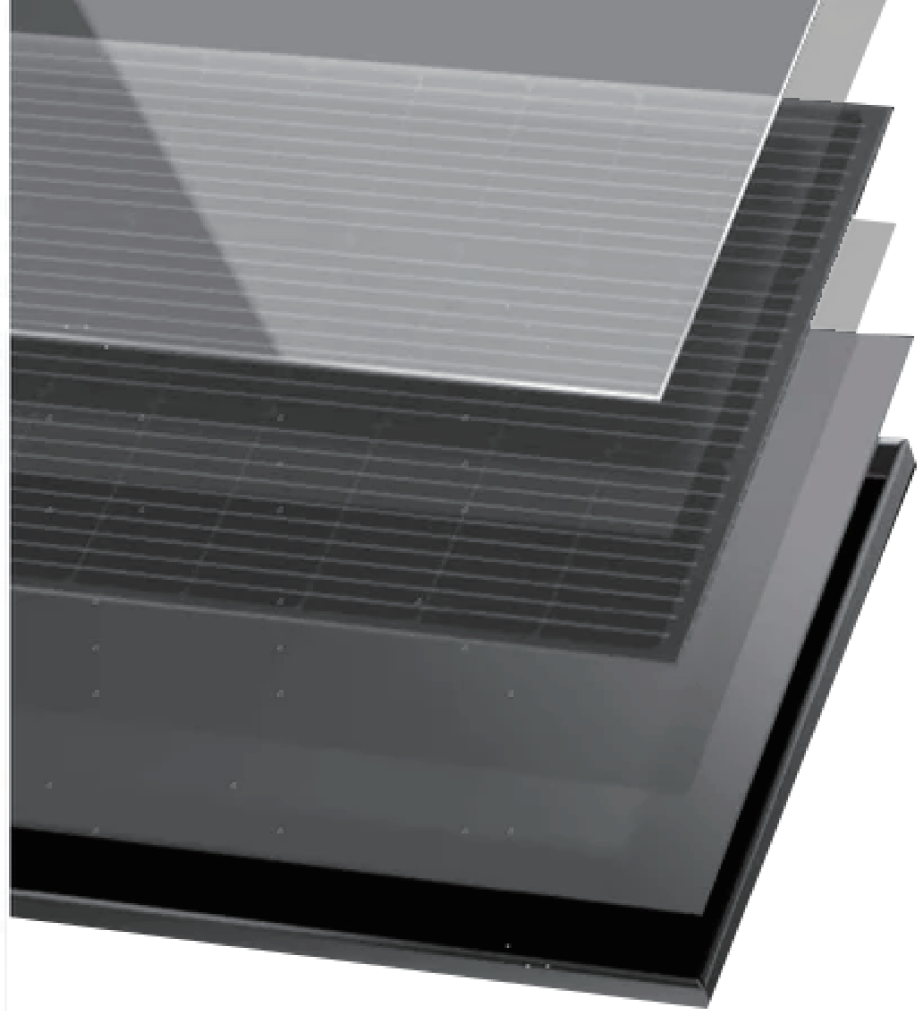
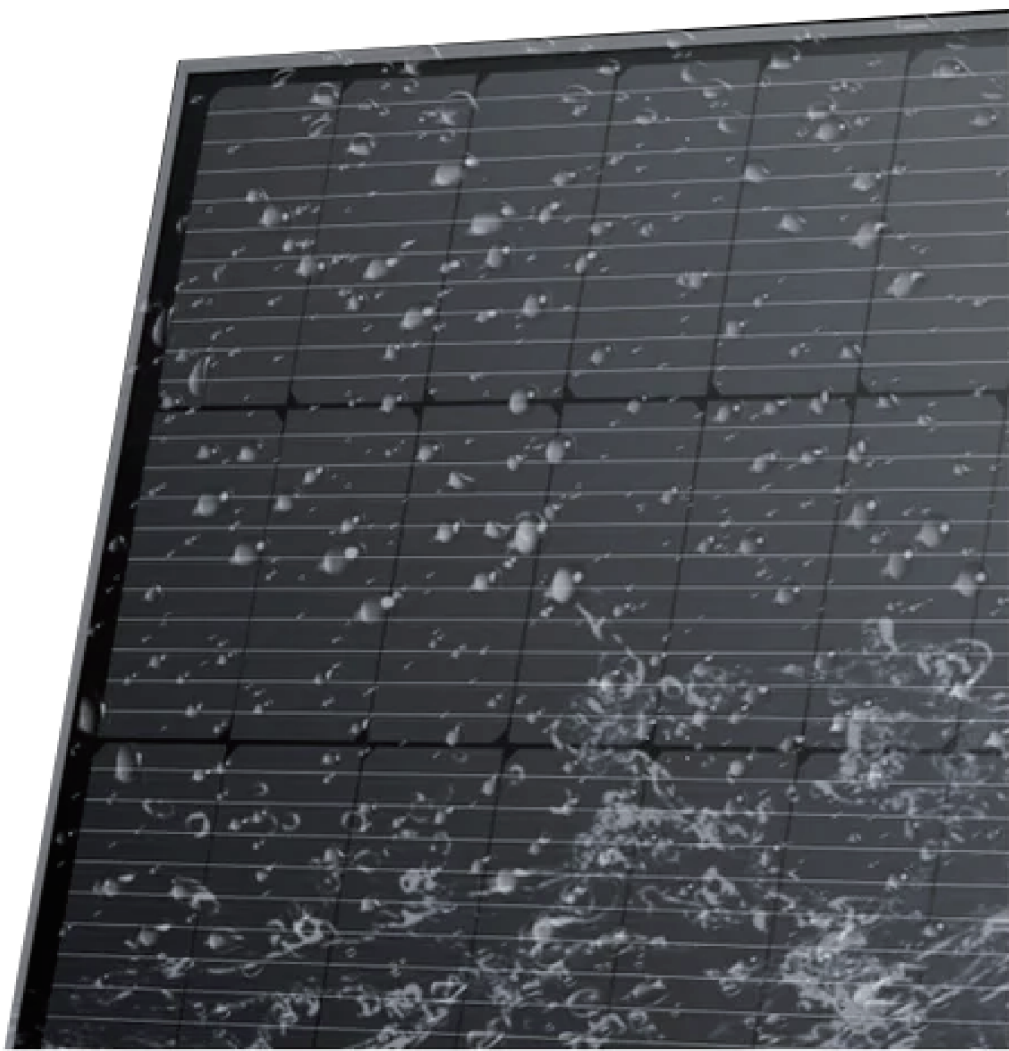


TULIP

TSF200
SOLAR PANEL



IP68 WATERPROOF



LATEST SOLAR TECHNOLOGY



**POWER FROM
EVERY BALCONY**



TSF200 SOLAR PANEL

Monocrystalline Module

Single Glass

180W-200W

200W

Maximum Power Output

19.90%

Maximum Module Efficiency

0~+3%

Power Output Guarantee



High quality silicon wafers guarantee high power module output and excellent cost-effectiveness, making it an ideal choice for solar units

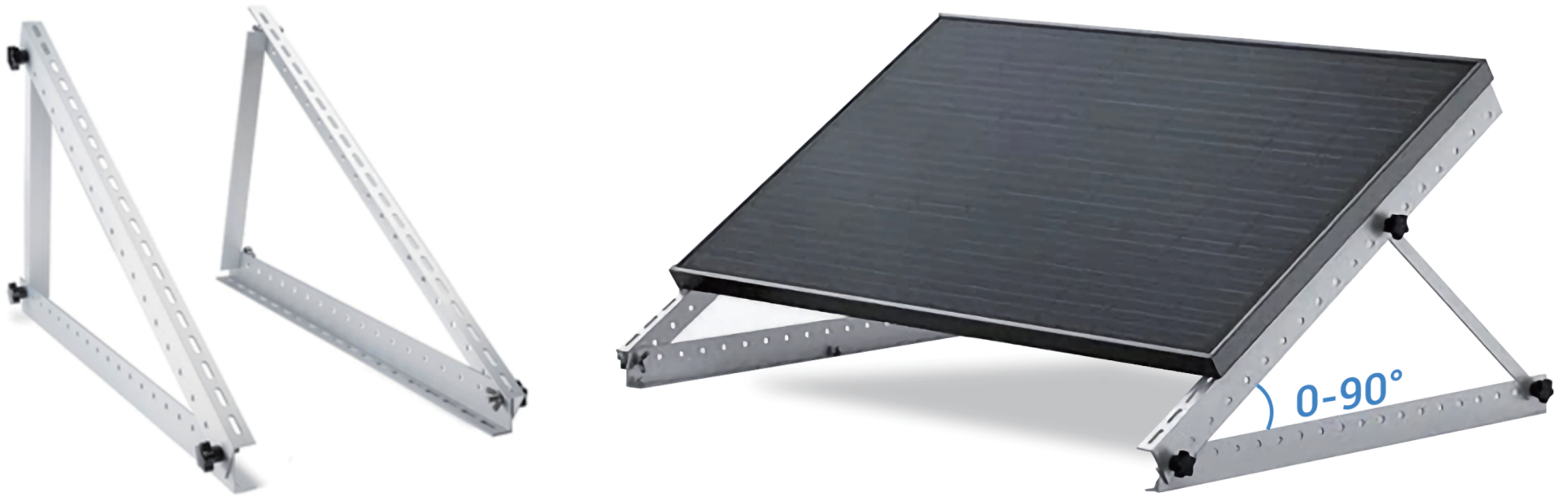


Adapt to harsh outdoor environments through weather resistance tests such as sand and dust, salt spray, and ammonia gas

Deliver Reliable Performance Over Time

- manufacturer of crystalline silicon photovoltaic modules
- Fully automatic facility and world-class technology
- Rigorous quality control to meet the highest standard: ISO9001:2015, ISO14001: 2015 and ISO 45001:2008
- Tested for harsh environments (salt mist, ammonia corrosion, sand blowing test, and PID test: IEC 61701, IEC 62716)
- Long term reliability tests
- 2×100% EL inspection ensuring defect-free modules

TSF200 SOLAR PANEL BRACKET





2 x short L-shaped adjustment rods



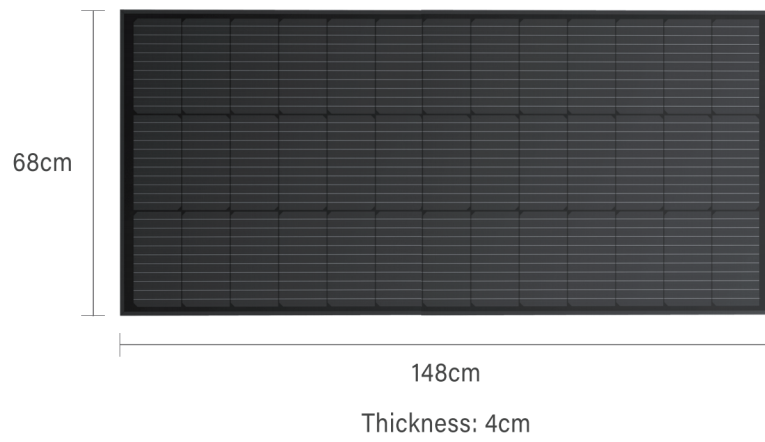
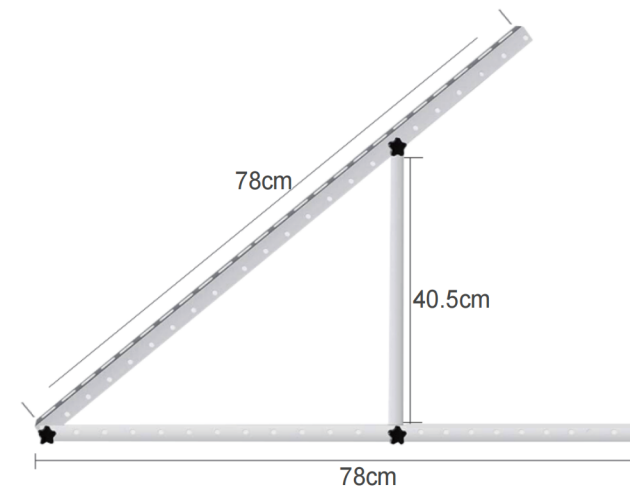
6 x M8 hexagonal plastic handle bolts

6 x M8 wing nuts

4 x M6*20 hexagonal bolts

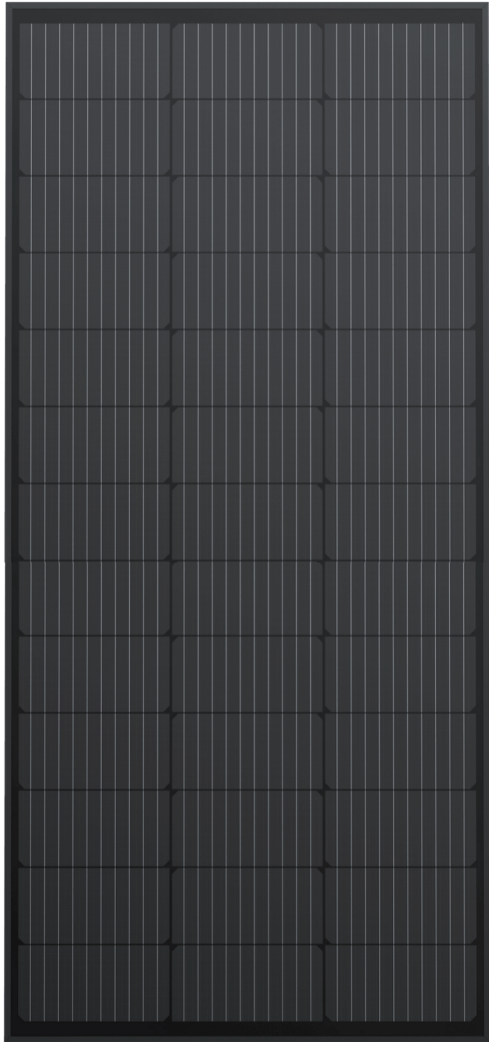
6 x ST5.5*38 stainless steel self-tapping screws

4 x L-shaped beams



Note: Fasteners for mounting on the floor, roof, or balcony are not included

ALUMINUM ALLOY 6005



XT-90 MC4 Cable: 6m