



This project has received funding
from the European Union's
Horizon 2020 research and
innovation programme under
grant agreement No 723390



Transition Areas for Infrastructure-Assisted Driving

Dr. Sven Maerivoet
Transport & Mobility Leuven, Belgium

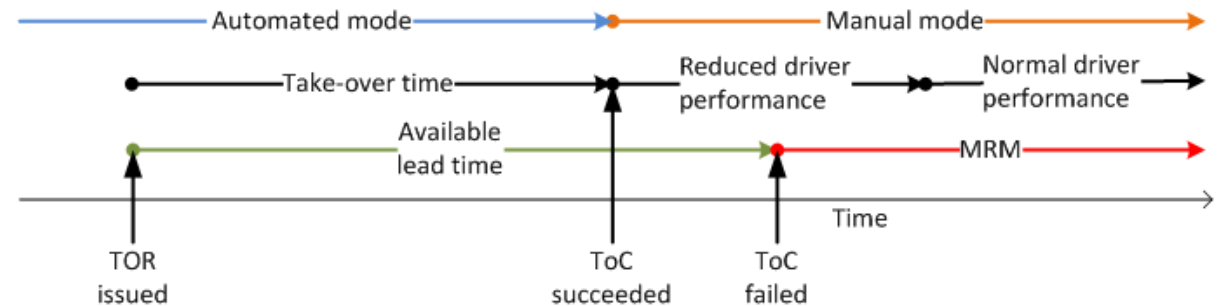


SCOPE AND BACKGROUND

- Different SAE levels, (C)AVs, legacy vehicles... sharing the road
- Missing sensor inputs, high complexity situations, ...

→ Transition Areas

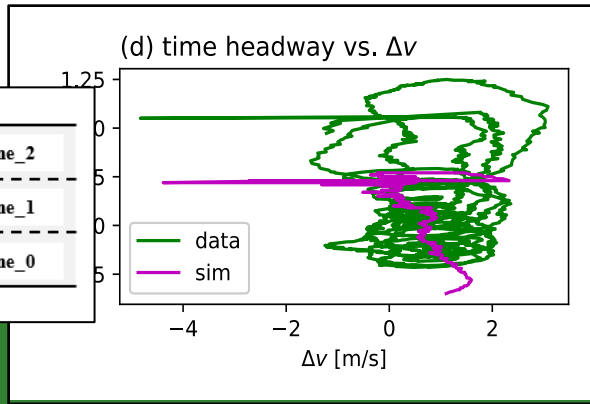
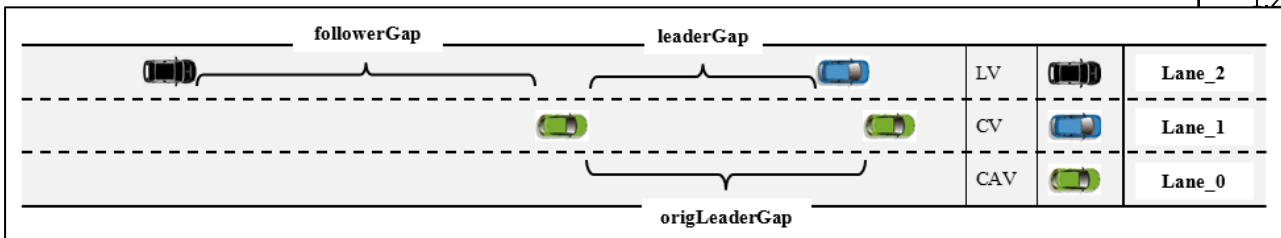
- Change level of automation
 - Transition of control (ToC)
 - Minimum risk manoeuvres (MRM)
- TransAID focuses on:
 - Realistic driver/vehicle behaviour and V2X communications
 - Hierarchical traffic management procedures for transition areas
 - Field tests in The Netherlands and Germany
 - Guidelines and roadmap for stakeholders (OEMs, authorities, cities, ...)

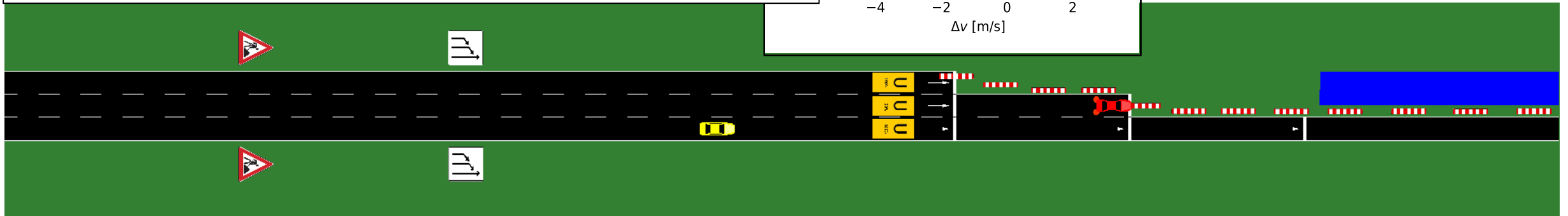


SIMULATION ENVIRONMENT

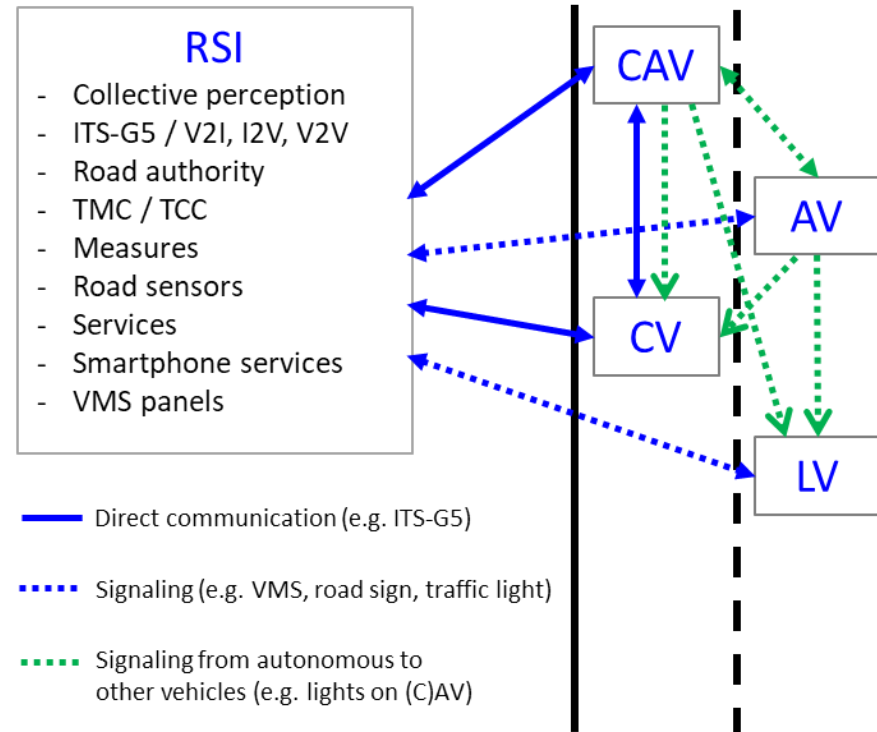
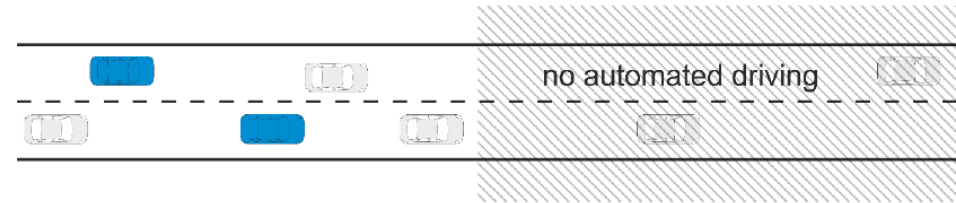
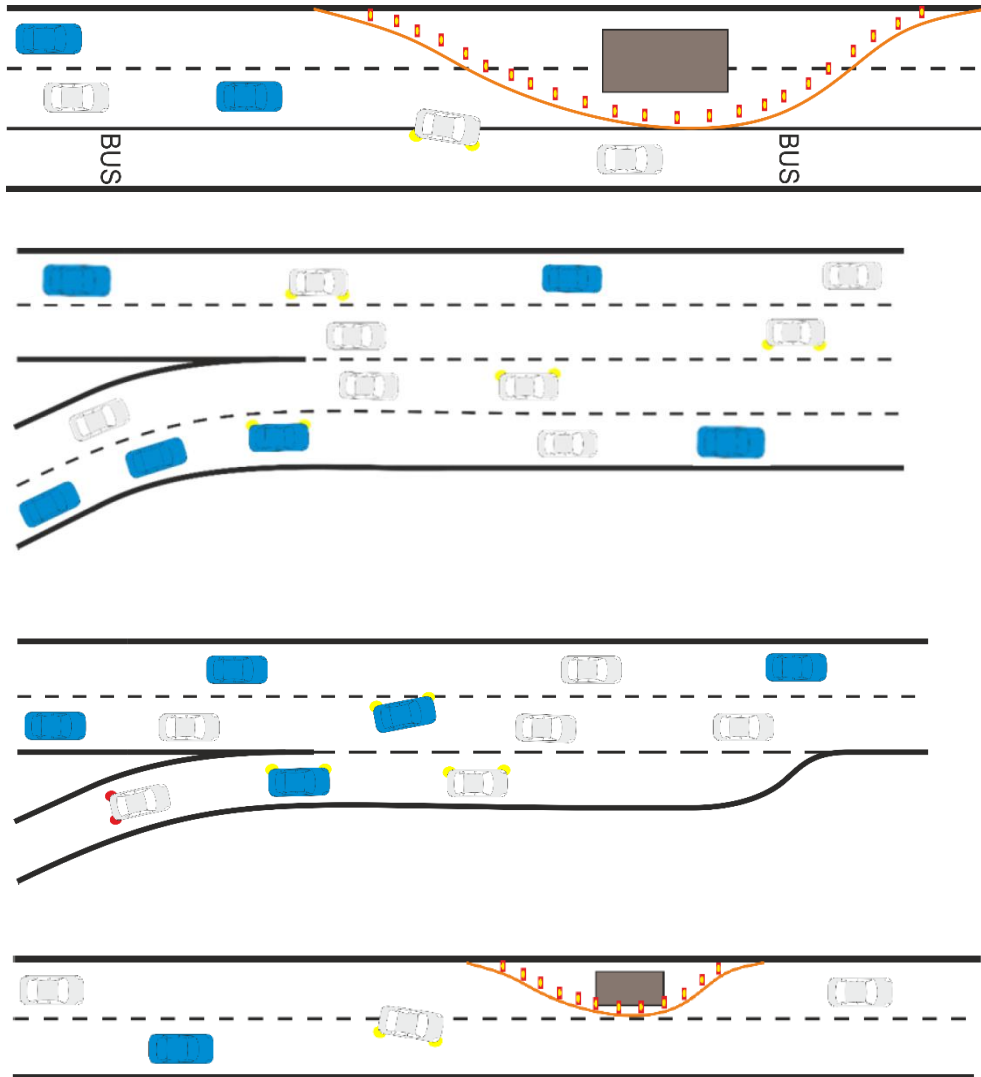



SUMO
Simulation of Urban MObility





SERVICES AND USE CASES



LET'S STAY IN TOUCH



• Contact:

- julian.schindler@dlr.de (DLR, project coordinator)
- sven.maerivoet@tmleuven.be (TML)

• Social media:

- Website: www.transaid.eu
- Twitter: [@transaid_h2020](https://twitter.com/transaid_h2020)
- LinkedIn: <https://www.linkedin.com/groups/13562830/>
- Facebook: <https://www.facebook.com/transaidh2020/>

• Subscribe to our newsletters!