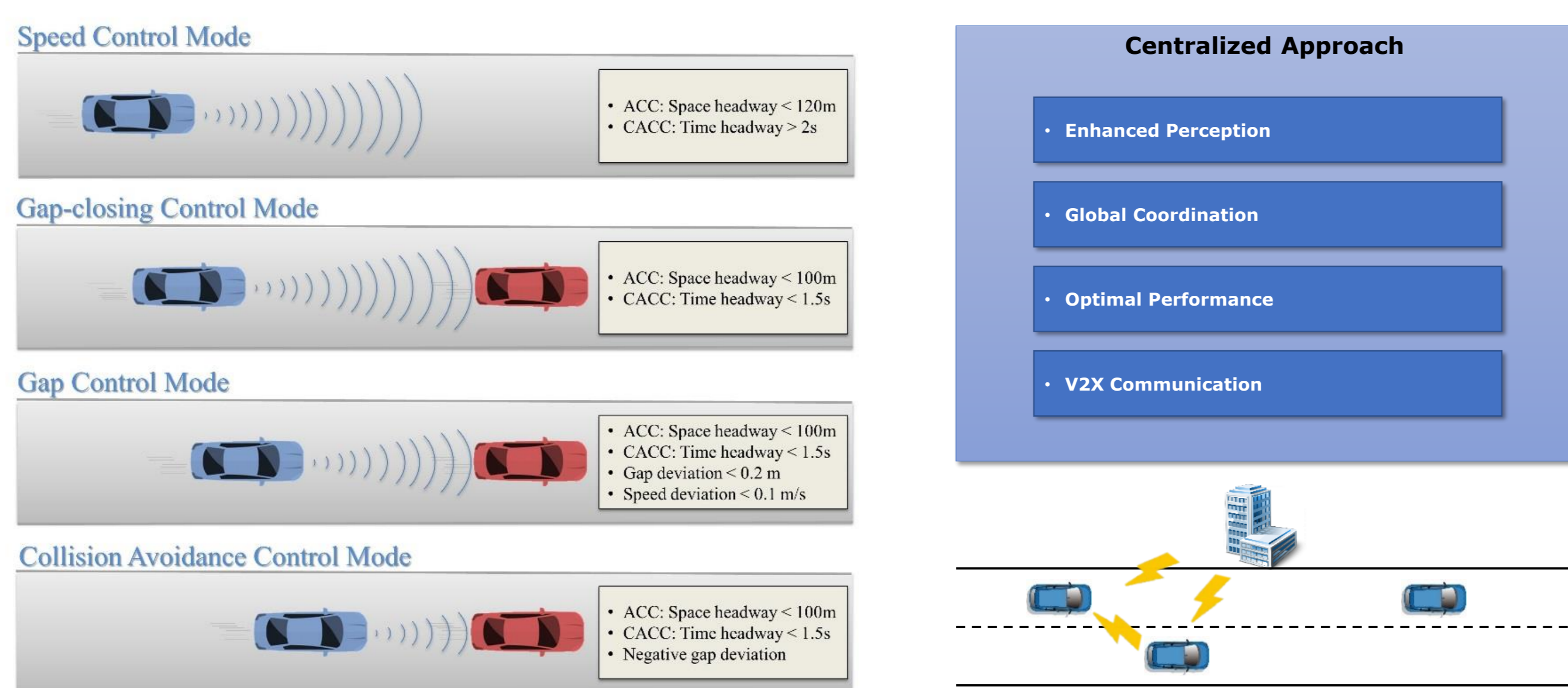


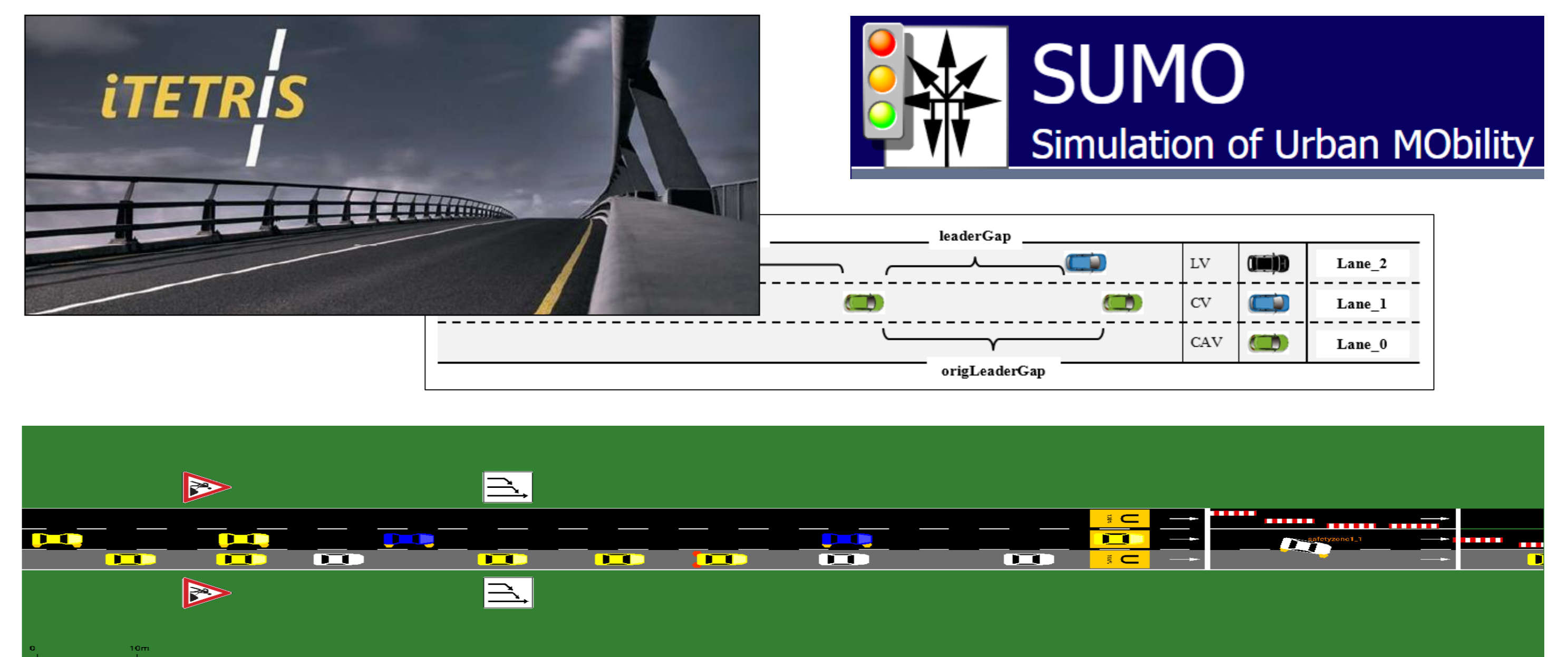
Joint Stakeholder Workshop - Graz, 9th Oct 2019

# Modelling Automated Driving

## Cooperative Manoeuvring



## Simulation Toolchain



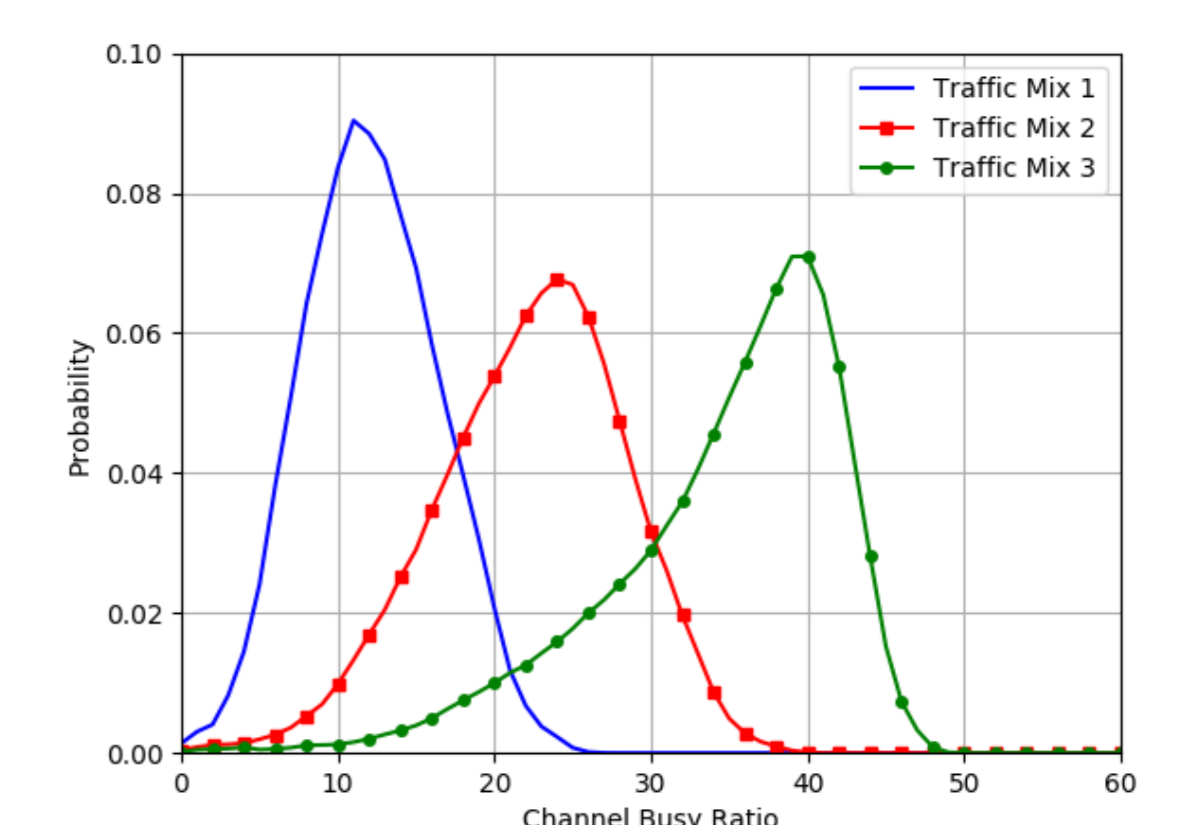
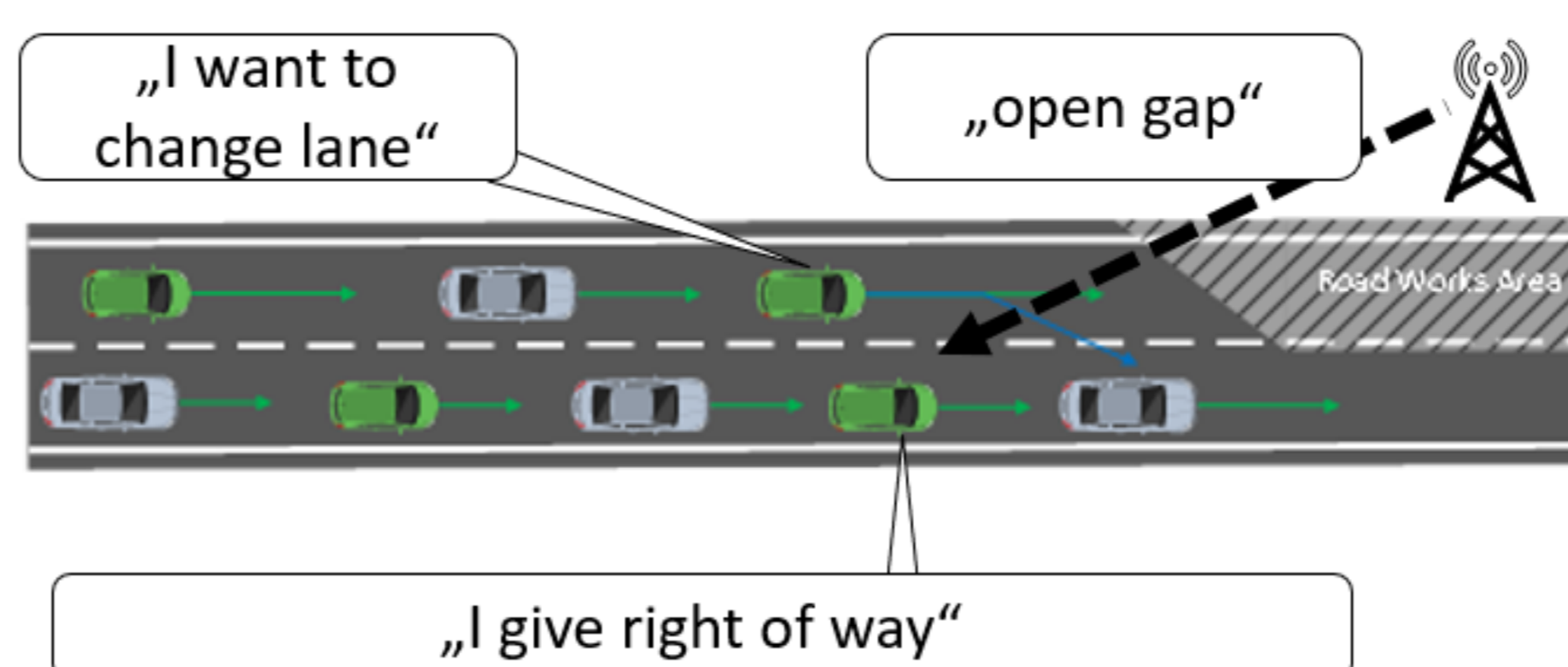
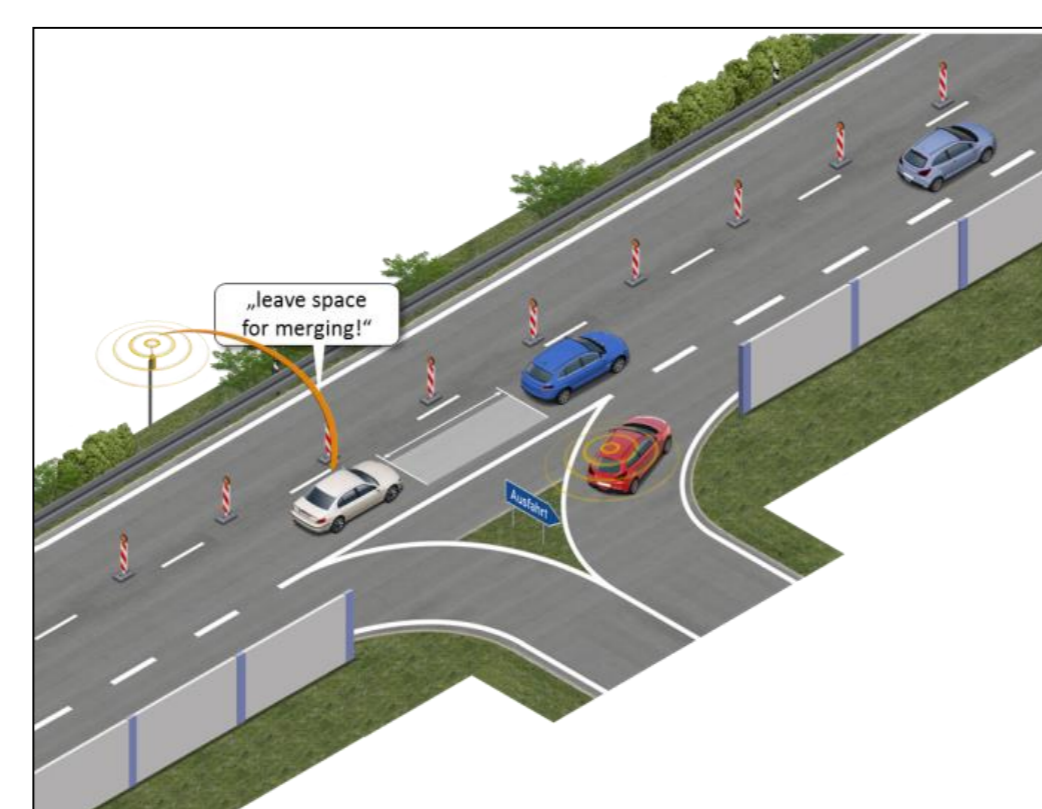
## Increasing Realism and Applicability

	LOS A	LOS B	LOS C
Urban (50km/h) – 1500 veh/h/l	525	825	1155
Rural (80 km/h) – 1900 veh/h/l	665	1045	1463
Motorway (120 km/h) – 2100 veh/h/l	735	1155	1617
Intensity / Capacity (IC) ratio	0.35	0.55	0.77

Vehicle Mix	Class 1	Class 1 (Conn.)	Class 2	Class 2 (Conn.)	Class 3	Class 3 (Conn.)	Class 4	Class 4 (Conn.)
1	60%	10%	-	15%	-	10%	-	5%
2	40%	10%	-	25%	-	15%	-	10%
3	10%	10%	-	40%	-	25%	-	15%

Class Name	Class Type	Vehicle Capabilities
Class 1	Manual Driving	- Legacy Vehicles
		- (C)AVs/CVs (any level of driving automation)
Class 2	Partial Automation	- Driving Automation: Off
		- AVs/CVs equipped with Level 1/2 driving automation systems
		- Instant ToC (driver responsible for monitoring road environment)
Class 3	Conditional Automation	- Emergency braking in case of distracted driving
		- (C)AVs equipped with Level 3 driving automation systems
		- Driving Automation: On
Class 4	High Automation	- Basic ToC (normal duration)/MRM capability (ego lane)
		- (C)AVs equipped with Level 4 driving automation systems
		- Driving Automation: On
		- Proactive ToC (prolonged duration)/MRM capability (right-most lane)

## V2X Communication



Social media:

- [www.transaid.eu](http://www.transaid.eu)
- [@transaid\\_h2020](https://twitter.com/transaid_h2020)
- [www.linkedin.com/groups/13562830/](https://www.linkedin.com/groups/13562830/)
- [www.facebook.com/transaidh2020/](https://www.facebook.com/transaidh2020/)

This project has received funding from the European Union's Horizon 2020 research and innovation programme under grant agreement No 723390.

