

FEATURES

Caratteristiche

Premium components

Componenti premium

Electric motors

Motori elettrici

4 poles
Voltage: Δ/Y 230/400V - 50Hz
Protection: I.C.I.F - IP69k - IC410
Efficiency: IE3 (IEC60034-30, IEC60034-2-1, Pn ≥ 0,75kW)
Duty cycle: S1
Other features: INVERTER DUTY, HYGIENIC, PTO PROTECTION INCLUDED

CLEAN-GEARTECH



INNOVATIVE PRODUCT RANGE



HYGIENIC DESIGN

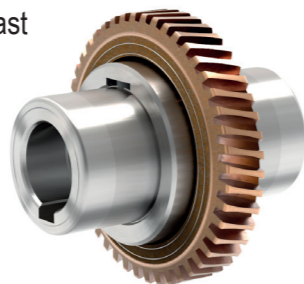
Twin viton seals with stainless steel 316L shield.

Doppio anello di tenuta in viton con schermo protettivo in acciaio inox AISI 316L.



CuSn12Ni (C91700) Nickel bronze worm gears are centrifugally cast onto an iron hub for maximum strength and superior life. Removable hollow shaft with key for safe torque transmissions.

Corona in bronzo al Nickel CuSn12Ni (C91700) centrifugato e mozzo in acciaio inox per massima resistenza e durata superiore. Albero cavo removibile con chiave mozzo/corona.



APM series
Aluminum premium electric motors

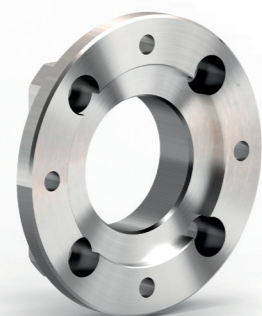
Motori elettrici in alluminio



Motor	kW	IE3	rpm (min-1)	Nm	A (400V)	COS (φ)
63A	0.12		1440	0.80	0.44	0.57
63B	0.18		1440	1.19	0.58	0.62
71A	0.25		1440	1.66	0.72	0.64
71B	0.37		1440	2.45	1.10	0.64
80A	0.55		1460	3.60	1.50	0.67
80B	0.75	IE3 PREMIUM EFFICIENCY	1460	4.91	2.10	0.67
90S	1.1	IE3 PREMIUM EFFICIENCY	1460	7.20	2.90	0.70
90L	1.5	IE3 PREMIUM EFFICIENCY	1460	9.81	4.00	0.70

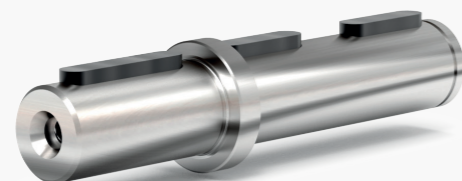
Fully modular IEC flanges and compact NEMA C motor flanges.

Flange IEC e NEMA completamente modulari.



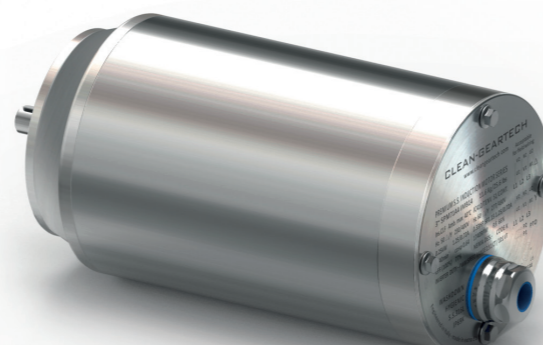
Output shaft is produced in AISI 316L. Special cover assures full protection of oil seals.

Albero in uscita in AISI 316L e coperchietto protettivo per anelli di tenuta.



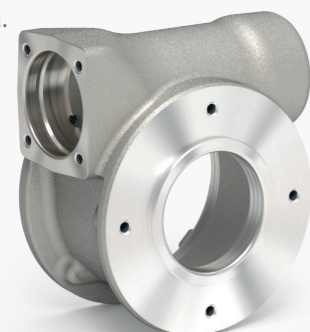
SPM series
Stainless steel premium electric motors

Motori elettrici in acciaio inox

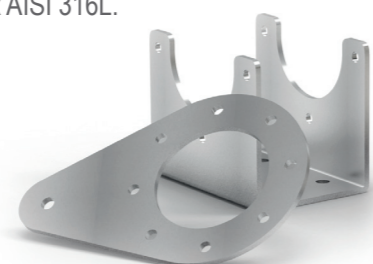


Motor	kW	IE3	rpm (min-1)	Nm	A (400V)	COS (φ)
63A	0.12		1440	0.80	0.44	0.57
63B	0.18		1440	1.19	0.58	0.62
71A	0.25		1440	1.66	0.72	0.64
71B	0.37		1440	2.45	1.10	0.64
80A	0.55		1460	3.60	1.50	0.67
80B	0.75	IE3 PREMIUM EFFICIENCY	1460	4.91	2.10	0.67
90S	1.1	IE3 PREMIUM EFFICIENCY	1460	7.20	2.90	0.70
90L	1.5	IE3 PREMIUM EFFICIENCY	1460	9.81	4.00	0.70
100LA	2.2	IE3 PREMIUM EFFICIENCY	1440	14.6	4.80	0.79

Housing with special smooth surfaces. Cassa con finitura speciale liscia.



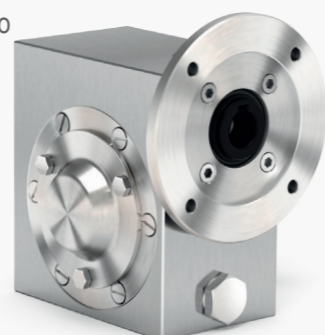
All stainless steel 316L hardware. Viteria e kit in acciaio inox AISI 316L.



Hardened and ground gears. Ingranaggi temprati e rettificati.



Closed protection cap in AISI 316L with o-ring. Coperchietto di protezione chiuso in AISI 316L con o-ring.



Distributed from



I Series

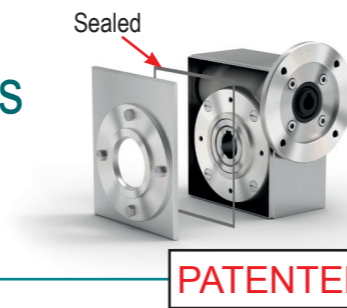
Full stainless steel gearboxes

Riduttori completamente in acciaio inox

L Series

Stainless steel shielded gearboxes

Riduttori schermati in acciaio inox



Z Series

Aluminum gearboxes with NTT treatment

Riduttori in alluminio con trattamento NTT

VFI Series

Stainless steel worm gearboxes

Riduttori a vite senza fine completamente in acciaio inox



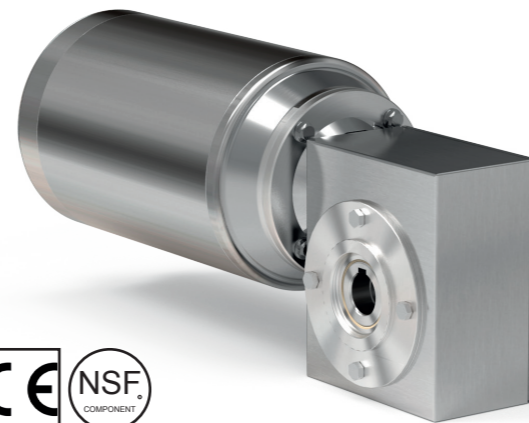
Ratios: 5 ÷ 102

Type Tipo	Torque Coppia	Input power Potenza in entrata
I30	21 Nm	0.06 ÷ 0.18 kW
I45	41 Nm	0.12 ÷ 0.37 kW
I50	72 Nm	0.12 ÷ 0.75 kW
I63	147 Nm	0.37 ÷ 1.8 kW
I85	347 Nm	0.55 ÷ 4.0 kW
I11	651 Nm	1.1 ÷ 4.0 kW

VFL series

Stainless steel shielded worm gearboxes

Riduttori a vite senza fine schermati in acciaio inox



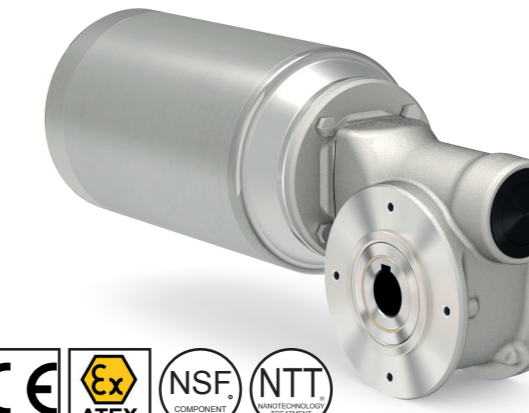
Ratios: 7 ÷ 102

Type Tipo	Torque Coppia	Input power Potenza in entrata
LD45	41 Nm	0.12 ÷ 0.37 kW
LD50	72 Nm	0.12 ÷ 0.75 kW
LD63	147 Nm	0.37 ÷ 1.8 kW
LD85	347 Nm	0.55 ÷ 4.0 kW

VFZ Series

Aluminum worm gearboxes

Riduttori a vite senza fine in alluminio



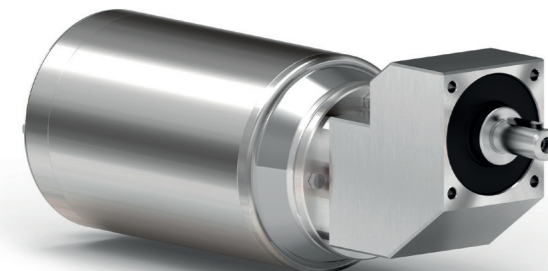
Ratios: 5 ÷ 102

Type Tipo	Torque Coppia	Input power Potenza in entrata
Z30	21 Nm	0.06 ÷ 0.18 kW
Z45	41 Nm	0.09 ÷ 0.37 kW
Z50	72 Nm	0.12 ÷ 0.75 kW
Z63	147 Nm	0.37 ÷ 1.8 kW
Z85	347 Nm	0.55 ÷ 4.0 kW

RCI Series

Stainless steel ratio multiplier

Riduttori ad uno stadio completamente in acciaio inox



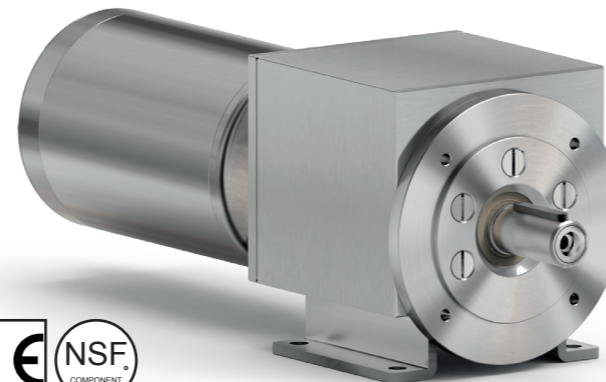
Ratios: 1.57 ÷ 10.86

Type Tipo	Torque Coppia	Input power Potenza in entrata
411I	38 Nm	0.37 ÷ 1.5 kW

RCL series

Stainless steel shielded coaxial gearboxes

Riduttori coassiali schermati in acciaio inox



Ratios: 1.3 ÷ 61.89

Type Tipo	Torque Coppia	Input power Potenza in entrata
411L	38 Nm	0.37 ÷ 1.5 kW
511L	110 Nm	1.1 ÷ 4.0 kW

Ratio multiplier - Riduttori coassiali ad uno stadio

Type Tipo	Torque Coppia	Input power Potenza in entrata
402L	160 Nm	0.37 ÷ 1.5 kW
602L	520 Nm	1.1 ÷ 4.0 kW

Coaxial gearboxes - Riduttori coassiali

RCZ Series

Aluminum ratio multiplier

Riduttori ad uno stadio in alluminio



Ratios: 2.05 ÷ 9.83

Type Tipo	Torque Coppia	Input power Potenza in entrata
211Z	20 Nm	0.25 ÷ 0.37 kW

BVI Series

Stainless steel helical bevel gearboxes

Riduttori a coppia conica completamente in acciaio inox



Ratios: 6.03 ÷ 77.36

Type Tipo	Torque Coppia	Input power Potenza in entrata
X42I	150 Nm	0.25 ÷ 1.5 kW
X62I	410 Nm	0.75 ÷ 4.0 kW

BVL series

Stainless steel shielded helical bevel gearboxes

Riduttori a coppia conica schermati in acciaio inox



Ratios: 4.83 ÷ 77.55

Type Tipo	Torque Coppia	Input power Potenza in entrata
X22L	50 Nm	0.12 ÷ 0.37 kW
X32L	90 Nm	0.25 ÷ 1.5 kW
X42L	150 Nm	0.25 ÷ 1.5 kW
X52L	250 Nm	0.55 ÷ 3.0 kW
X62L	410 Nm	0.75 ÷ 4.0 kW

NTT™ stands for a special surface treatment which results in modified external properties of the complete unit in order to get a smooth surface and an higher corrosion resistance.

NTT™ è uno speciale trattamento che come risultato ha la modifica delle proprietà superficiali del riduttore allo scopo di ottenere una superficie liscia e con maggiore resistenza alla corrosione.