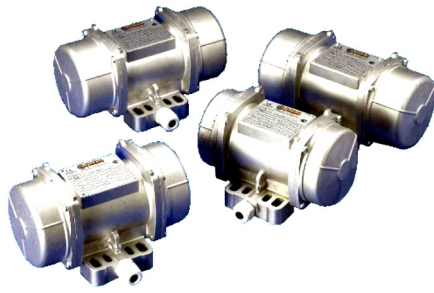


**ELECTRIC VIBRATORS**  
**M3**

**VIBRATECHNIQUES LTD**

20 Cecil Pashley Way, Shoreham Airport, Shoreham by Sea, West Sussex, BN43 5FF  
Tel: +44 (0)1273 430977 Fax: +44 (0)1273 430978 Email: sales@vibtec.com Web: www.vibtec.com



Rotary Vibrator

Protection IP66, IK 08 shock-resistance level

Insulation Class F (155°C)

24V to 690V available

Ambient temperature -20°C to +40°C

ATEX rated as standard for zone 21 & 22

**PERFORMANCE DATA**

MODEL	Static Moment * kgmm		Max Centrifugal Force				Weight Kg		Maximum Input Power Watts		Maximum Current Amps		Ia/In •	
			kg		kN									
	50Hz	60Hz	50Hz	60Hz	50Hz	60Hz	50Hz	60Hz	50Hz	60Hz	50Hz	60Hz	50Hz	60Hz
<b>M3</b>	<b>2 POLES 3000/3600 RPM 115V 1Ph 50/60Hz 3000/3600RPM</b>													
M3/65-S02	6.43	6.43	64.7	93.1	0.635	0.913	4.3	4.3	110	110		1.52		3.90
M3/105-S02	9.64	9.64	97.0	140.0	0.950	1.370	5.2	5.2	165	165		1.52		3.00
M3/205-S02	21.00	21.00	211	304	2.07	2.98	6.0	6.0	165	165		1.52		3.00
M3/305-S02	31.00	31.00	311	305	3.05	2.98	6.3	6.3	165	165		1.52		3.00
<b>M3</b>	<b>2 POLES 3000/3600 RPM 220V 1Ph 50/60Hz 3000/3600RPM</b>													
M3/65-S02	6.43	6.43	64.7	93.1	0.635	0.913	4.3	4.3	110	110	0.56		3.43	
M3/105-S02	9.64	9.64	97.0	140.0	0.950	1.370	5.2	5.2	165	165	0.75		2.68	
M3/205-S02	21.00	21.00	211	304	2.07	2.98	6.0	6.0	165	165	0.75		2.68	
M3/305-S02	31.00	31.00	311	305	3.05	2.98	6.3	6.3	165	165	0.75		2.68	
<b>M3</b>	<b>2 Poles 3000/3600 RPM 400/460V 3Ph 50/60Hz 3000/3600RPM</b>													
M3/65-S02	6.43	6.43	64.7	93.1	0.635	0.913	4.3	4.3	120	120	0.27	0.23	3.43	3.90
M3/105-S02	9.64	9.64	97.0	140.0	0.950	1.370	5.2	5.2	180	180	0.35	0.30	2.68	3.00
M3/205-S02	21.00	21.00	211	304	2.07	2.98	6.0	6.0	180	180	0.35	0.30	2.68	3.00
M3/305-S02	31.00	31.00	311	305	3.05	2.98	6.3	6.3	180	180	0.35	0.30	2.68	3.00
<b>M15</b>	<b>4 POLES 1500/1800 RPM 115V 1Ph 50/60Hz 3000/3600RPM</b>													
M15/36-S02	12.00	12.00	30.2	43.5	0.30	0.43	5.4	5.4	90	100		1.00		1.30
M15/81-S02	31.00	21.00	77.9	76.1	0.76	0.75	6.3	6.3	90	100		1.00		1.30
<b>M15</b>	<b>4 POLES 1500/1800 RPM 220V 1Ph 50/60Hz 3000/3600RPM</b>													
M15/36-S02	12.00	12.00	30.2	43.5	0.30	0.43	5.4	5.4	90	100	0.43		1.20	
M15/81-S02	31.00	21.00	77.9	76.1	0.76	0.75	6.3	6.3	90	100	0.43		1.20	
<b>M15</b>	<b>4 POLES 1500/1800 RPM 400/460V 3Ph 50Hz 3000/3600RPM</b>													
M15/36-S02	12.00	12.00	30.2	43.5	0.30	0.43	5.4	5.4	85	95	0.21	0.20	1.78	1.95
M15/81-S02	31.00	21.00	77.9	76.1	0.76	0.75	6.3	6.3	85	95	0.21	0.20	1.78	1.95

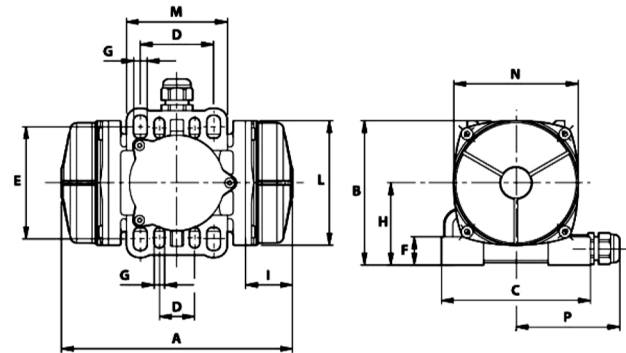
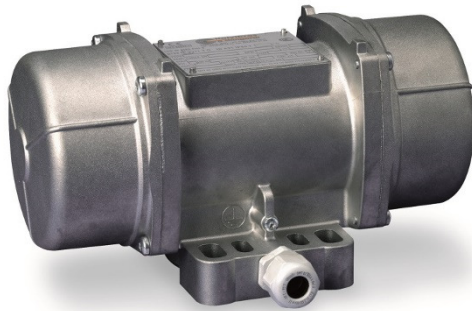
\* Working Moment=2 x Static Moment. • Ia/In Ratio between start up current and maximum current

**VIBRATECHNIQUES LTD**

20 Cecil Pashley Way, Shoreham Airport, Shoreham by Sea, West Sussex, BN43 5FF

Tel: +44 (0)1273 430977 Fax: +44 (0)1273 430978 Email: sales@vibtec.com Web: www.vibtec.com

**DIMENSIONS**



MODEL	A	B	C	Multi-hole		F	ØG	No. Holes	H	I	ØL	M	N	P	Gland
				D	E										
<b>M3</b>	<b>2 POLES 3000/3600 RPM 115V 1Ph 50/60Hz 3000/3600RPM</b>														
M3/65-S02	197	123	127	30-60 65-62	85-100 85-106	24	9	4	70	40	106	86	106	88.5	M20x1.5
M3/105-S02	211									47					
M3/205-S02	235									59					
M3/305-S02	235									59					
<b>M3</b>	<b>2 POLES 3000/3600 RPM 220V 1Ph 50/60Hz 3000/3600RPM</b>														
M3/65-S02	197	123	127	30-60 65-62	85-100 85-106	24	9	4	70	40	106	86	106	88.5	M20x1.5
M3/105-S02	211									47					
M3/205-S02	235									59					
M3/305-S02	235									59					
<b>M3</b>	<b>2 Poles 3000/3600 RPM 400/460V 3Ph 50/60Hz 3000/3600RPM</b>														
M3/65-S02	197	123	127	30-60 65-62	85-100 85-106	24	9	4	70	40	106	86	106	88.5	M20x1.5
M3/105-S02	211									47					
M3/205-S02	235									59					
M3/305-S02	235									59					
<b>M15</b>	<b>4 POLES 1500/1800 RPM 115V 1Ph 50/60Hz 3000/3600RPM</b>														
M15/36-S02	235	123	127	30-60 65-62	85-100 85-106	24	9	4	70	59	106	86	106	88.5	M20x1.5
M15/81-S02	235									59					
<b>M15</b>	<b>4 POLES 1500/1800 RPM 220V 1Ph 50/60Hz 3000/3600RPM</b>														
M15/36-S02	235	123	127	30-60 65-62	85-100 85-106	24	9	4	70	59	106	86	106	88.5	M20x1.5
M15/81-S02	235									59					
<b>M15</b>	<b>4 POLES 1500/1800 RPM 400/460V 3Ph 50Hz 3000/3600RPM</b>														
M15/36-S02	235	123	127	30-60 65-62	85-100 85-106	24	9	4	70	59	106	86	106	88.5	M20x1.5
M15/81-S02	235									59					

\* Working Moment=2 x Static Moment. • Ia/In Ratio between start up current and maximum current

**VIBRATECHNIQUES LTD**

20 Cecil Pashley Way, Shoreham Airport, Shoreham by Sea, West Sussex, BN43 5FF  
Tel: +44 (0)1273 430977 Fax: +44 (0)1273 430978 Email: sales@vibtec.com Web: www.vibtec.com



**MVSI**

The most extensive range of industrial electric vibrators on the market. Approved for potentially explosive dust atmospheres (ATEX, IECEx, GOST). Range from 0 to 67200 lbs.



**MVSI-TS**

MVSI industrial electric vibrators with split covers.



**MVSI-ACC**

MVSI industrial electric vibrators for axial coupling.



**MVSI-E**

"Ex e" increased safety electric vibrators for potentially explosive atmosphere (ATEX, IECEx, GOST). Range up to 24550 lbs.



**MVLS**

Low Speed electric industrial vibrators. Range up to 18000 lbs centrifugal force. RPM from 1200 to 500.



**CDX**

"Ex d" explosion-proof industrial electric vibrators for operation in potentially explosive atmospheres (UL, CSA, ATEX, IECEx, GOST). Range up to 49250 lbs.



**MVTX**

"Ex d" explosion-proof screen electric vibrators for operation in potentially explosive atmospheres. Bear UL, cUL, ATEX and IECEx marking. Range up to 17450 lbs.



**MVCC**

Direct current vibrators (12 or 24 V) designed for continuous duty on mobile machines. Range from 0 to 3350 lbs.



**MVSS**

Electric industrial vibrators in stainless steel AISI 316L for the chemical, petroleum chemistry, food, pharmaceutical processing sectors. Range from 0 to 9520 lbs.



**MICRO**

Electric vibrators designed for continuous service in processes where a lower centrifugal force is required. Range from 0 to 143 lbs.



**M3**

Electric industrial vibrators with multi-holes mounting feet and minimum dimensions. Range up to 684 lbs.



**ITV-VR**

Variable high frequency electric vibrators with fixed or cradle connection for industrial building sector. Range from 0 to 19800 lbs.



**ITVAF**

High frequency electric vibrators with fixed or cradle connection for industrial building sector. Range from 0 to 19800 lbs.



**VU**

Unidirectional linear motion exciters designed for medium and large size vibrating machines. Range up to 6400 in-lbs (102000 lbs).



**MTF**

Vertical electric vibrators with side flange. Range from 0 to 5750 lbs.



**MTF-E**

"Ex e" increased safety vertical electric vibrators with side flange for potentially explosive atmosphere (ATEX, IECEx, GOST).



**VB**

Vertical electric vibrators with double tapered flange. Range from 0 to 11000 lbs.



**VB-E**

Vertical electric vibrators with side flange. Range from 0 to 5750 lbs.



**MVB**

Vertical electric vibrators with side flange and shaft projecting on both sides. Range from 0 to 15400 lbs.



**MVB-FLC**

Vertical electric vibrators with central flange and shaft projecting on both sides. Range from 0 to 15400 lbs.



**MVB-E**

"Ex e" increased safety vertical electric vibrators with side flange and shaft projecting on both sides, for potentially explosive atmosphere (ATEX, IECEx, GOST).



**MVB-E-FLC**

"Ex e" increased safety vertical electric vibrators with central flange and shaft projecting on both sides, for potentially explosive atmosphere (ATEX, IECEx, GOST).