

70 Years Of The UK Singles Chart

the
**record
retailer**
and music industry news

Volume 10 1961

THE NEW MUSICAL EXPRESS
MUSIC CHARTS

BRITAIN'S TOP 50

RR JANUARY 10, 1970

ARTIST	TITLE	LABEL NO.	PUBLISHER	PRODUCER	UK DISTRIBUTORS A-Z
THE BOYS	Roll Harris	Columbia DB 8630	Southern	M. Clarke	All I Have To Do Is Dream - 47C/E
THE TAKE YOUR LOVE TO TOWN	K. Rodgers/First Edition	Reprise RS 20829	Cookaway	Jimmy Bowen	177R
POT Blue Mink		Philips BF 1818			15E
Van Lee M. & Emily M.		MCA MU 1101			13E
Acuff-Rose/Kelly Gordon/AI de Lory		Capitol CL 15619	Witwick		10E
London Tree		RCA 1872			95S
Various		RCA 1900			44E
Mark Lipkin		Columbia DB 8638			29E
Jill Barry		Tamla Motown TMG 717	Island/BC		8E
Green River		Trojan TR 875			23F
Highway Song		Tamla Motown TMG 715	Jobert/Carlin		49E
Witcher A Side		Columbia DB 8613	Valley		21A
Change Your Mind		Decca F 12996			32F
Let It All Hang Out		Decca F 12980			20E
Lipadelator					12E
Lipadelator					49E
Lipadelator					21A
Lipadelator					32F

UP AND COMING

RECORDS listed below were chosen by Record Retailer to make the Top 50.

HELP ME GIRL, Eric Burdon & The Animals

UNUSUAL, Hubert Albert

IF I CAN'T MAKE IT ALONE, The Beatles

REMEMBER OF THE BOOKS, Simon & Garfunkel

AGE DAMAGE, Emaline & The Big Boys

IF I FEELS LIKE, The Beatles

THEY'RE HERE, The Beatles

BRITAIN'S TOP FIFTY

RECORD RETAILER & MUSIC WEEK

1	STRANGERS IN THE NIGHT	18	ONCE THERE WAS A TIME NOT RESPONSIBLE	35	Nancy Sinatra
(1) (3) (12)	Frank Sinatra	Reprise R 23652	Tom Jones	Decca F 12398	(20) (22) (21)
2	PAINT IT BLACK	19	YOU DON'T HAVE TO SAY YOU LOVE ME	36	HOMeward BOUND
(2) (1) (5)	Rolling Stones	Decca F 12395	Dusty Springfield	Philips BF 1482	Simon & Garfunkel
3	WILD THING	20	DAY DREAM	37	NOBODY NEEDS YOUR LOVE
(3) (2) (4)	Troggs	Fontana TF 689	Lavin' Spoonful	Pyo 7N 25361	Gene Pitney
4	SORROW	21	PIED PIPER	38	HIDEAWAY
(4) (5) (9)	Merseys	Fontana TF 691	Crispian St. Peters	Decca F 12359	Dave Dee, Dazy, Beaky, Mick and Tich
5	MONDAY				Fontana TF 711

TOP 75 SINGLES

MUSIC WEEK

WEEK	TITLE	ARTIST	LABEL	WEEK	TITLE	ARTIST	LABEL
1	I JUST CALLED TO SAY I LOVE YOU	Mo'Nique	Mercury	26	TESLA GIRLS	Mercury	Mercury
2	WALK DON'T STOP	Mercury	Mercury	27	HOT WATER	Mercury	Mercury
3	THE MEDICINE SONG	Mercury	Mercury	28	NO MORE LONELY NIGHTS (BALLAD)	Mercury	Mercury
4	PASSINGERS	Mercury	Mercury	29	LIKE TO GET TO KNOW YOU WELL	Mercury	Mercury
5	SKIN DEEP	Mercury	Mercury	30	SELF CONTROL	Mercury	Mercury
6	FEELS LIKE THE FIRST TIME	Mercury	Mercury	31	HEAVENLY CREATURES	Mercury	Mercury
7	SOMETHING WHEN WE TOUCH	Mercury	Mercury	32	BOOGIE SHOES	Mercury	Mercury
8	HEY LORD DON'T ASK ME QUESTIONS	Mercury	Mercury	33	DANCE A LITTLE BIT CLOSER	Mercury	Mercury
9	BOOGIE SHOES	Mercury	Mercury	34	ROSALEIE	Mercury	Mercury
10	JUST FOR YOU	Mercury	Mercury	35	PUMP IT UP	Mercury	Mercury

HIT SINGLES 2

WEEK	TITLE	ARTIST	LABEL	WEEK	TITLE	ARTIST	LABEL
51	AMIGOS PARA SIEMPRE (FRIENDS...)	José Carreras/Sarah Brightman	RCA	57	DANCING QUEEN	Abba	Atlantic
52	CRAZY LOVE	Co Peniston	Mercury	58	THE MIGHTY MIAMI	Brothers Love	Mercury
53	DISCIPLES (EP)	Co Peniston	Mercury	59	SEXY ME/STROLLIN'	Prince & New Power Generation	Mercury
54	WHAT ARE YOU UNDER	Definition Of Sound	Mercury	60	HYPNOSIS	Psychotropic	Mercury
55	GRADUALLY LEARNING	Kingbirds	Mercury				

WEEK	TITLE	ARTIST	LABEL	WEEK	TITLE	ARTIST	LABEL
1	SOMETHING STUPID	Robbie Williams & Nicole Kidman	Chrysalis	13	WORDS ARE NOT ENOUGH	Stacy	Mercury
2	GOTTA GET THRU THIS	Daniel Bedingfield	Mercury	14	HEY BABY	DJ Daz	Mercury
3	HOW WONDERFUL YOU ARE	Gordon Haskell	Mercury	15	BECAUSE I GOT HIGH	Alphaville	Mercury
4	MURDER ON THE DANCEFLOOR	Sophie Ellis-Bextor	Mercury	16	CAN'T GET YOU OUT OF MY HEAD	Kylie Minogue	Mercury
5	HANDBAGS AND GLADRAGS	Stereophonics	Mercury	17	JUST A DAY EP	Fossil	Mercury
6	WILL I - Jan Van Driel		Mercury	18	IN TOO DEEP	Sum 41	Mercury
7	HAVE YOU EVER	3 Club T	Mercury	19	WHO DO YOU LOVE NOW (STRINGER)	Five	Mercury
8	LATELY	Samantha Mumba	Mercury	20	EVERYBODY	Mercury	Mercury
9	WHAT IF	Kate Winslet	Mercury				
10	COUNTRY ROADS	Herman's Herd Band	Mercury				
11	RESURRECTION	Jink	Mercury				
12	I BELIEVE IN CHRISTMAS	Tina Turner	Mercury				

Compiled by
Lonnie Radioff

Contents

Welcome to 1961	4
Milestones	5
Chart Age – Top 130 Weeks	6
Chart Age – Bottom 130 Weeks	8
Number 1's 1961	9
Statistics	16
Most Weeks By Artist – Top 500	17
Most Weeks By Artist – Top 500 – 1960's Decade	25
Most Weeks By Artist – 1961	32
Most Weeks By Title.....	34
The Annual 1961	38
Artist History Details	48
The Artist Analysis	53
Weekly Charts	90
Hit Log – All Entries With Images	143
Hit Log – Top 10 Compressed view	169
Hit Log – Top 20 Compressed view	177
Hit Log – Top 40 Compressed view	186
Disc Awards 1961	199
Alphabetical Title Listing	204

The NME Singles Chart Details

Introduction	208
Chart Age – Top 130 Weeks	209
Chart Age – Bottom 130 Weeks	210
Number 1's 1961	211
Most Weeks By Artist – Top 500	218
Most Weeks By Artist – Top 500 – 1960's Decade	226
Most Weeks By Artist – 1961	231
Most Weeks By Title.....	233
The Annual 1961	236

The Artist Analysis	243
Weekly Charts	275
Hit Log – All Entries With Images	327
Hit Log – Top 10 Compressed view	346
Hit Log – Top 20 Compressed view	354
Alphabetical Title Listing	364

The Melody Maker Singles Chart Details

Introduction	367
Chart Age – Top 130 Weeks	368
Chart Age – Bottom 130 Weeks	369
Number 1's 1961	370
Most Weeks By Artist – Top 500	375
Most Weeks By Artist – Top 500 – 1960's Decade	382
Most Weeks By Artist – 1961	385
Most Weeks By Title.....	386
The Annual 1961	388
The Artist Analysis	392
Weekly Charts	418
Hit Log – All Entries With Images	444
Hit Log – Top 10 Compressed view	456
Alphabetical Title Listing	463

The Disc Singles Chart Details

Introduction	466
Chart Age – Top 130 Weeks	467
Chart Age – Bottom 130 Weeks	468
Number 1's 1961	469
Most Weeks By Artist – Top 500	474
Most Weeks By Artist – Top 500 – 1960's Decade	479

Most Weeks By Artist – 1961	483
Most Weeks By Title.....	484
The Annual 1961	486
The Artist Analysis	490
Weekly Charts	516
Hit Log – All Entries With Images	542
Hit Log – Top 10 Compressed view	554
Alphabetical Title Listing	562

The Melody Maker EP Chart Details

Introduction	565
Chart Age – Top 130 Weeks	566
Chart Age – Bottom 130 Weeks	567
Number 1’s 1961	568
Most Weeks By Artist – Top 500	569
Most Weeks By Artist – Top 500 – 1960’s Decade	570
Most Weeks By Artist – 1961	571
Most Weeks By Title.....	572
The Annual 1961	573
The Artist Analysis	574
Weekly Charts	589
Hit Log – All Entries With Images	602
Alphabetical Title Listing	605

The Record Retailer EP Chart Details

Introduction	606
Chart Age – Top 130 Weeks	607
Chart Age – Bottom 130 Weeks	608
Number 1’s 1961	609
Most Weeks By Artist – Top 500	611
Most Weeks By Artist – 1961	613
Most Weeks By Title.....	614
The Annual 1961	616

The Artist Analysis	619
Weekly Charts	645
Hit Log – All Entries With Images	671
Hit Log – Top 10 Compressed view	679
Alphabetical Title Listing	683

The Disc Singles Bubbling Under Chart Details

Introduction	685
Most Weeks By Artist – Top 500	686
Most Weeks By Artist – Top 500 – 1960’s Decade	690
Most Weeks By Artist – 1961	691
Most Weeks By Title.....	692
The Annual 1961	693
The Artist Analysis	697
Weekly Charts	718
Hit Log – All Entries With Images	722
Alphabetical Title Listing	729

CrossTab Analysis 1961 Singles Charts

Introduction	731
Weekly Top 30 Side By Side.....	732

Welcome to 1961

1961 is a sort of 'holding' year, a bit like 1953. 1952 began the chart, 1954 expanded it and then we get the 1956 when Skiffle happens, Elvis happens and music explodes. 1961 is sort of the same in that 1960 we have chart compilation changes and 1962 we get the first Beatles record. So, nothing much happened in 1961? Well, on the face of it, no, nothing much did happen in 1961; the chart stayed a Top 50, was printed each week, and no real errors abounded in printing. A boring year...?

1961 was another year when the Most Weeks On Chart Artist spent above 100 weeks on the chart. Now, this was for the Shadows who were leading a double chart life as their own chart act and as Cliff Richard's backing band. Second, also over 100, is Geoff Love. Third is thus Elvis, who spent much of 1960 in a recording studio or on a film set. In 1961 he was awarded a plaque disc by RCA Victor for world wide sales of over 75 million. 25 March 1961 though was Elvis' last public performance for 7 years and while he had 4 number 1's in the year, the same as 1962, 1961 is a sort of changing of the guard. 'It's Now Or Never' (which charted at the end of 1960 and into 1961) is his biggest selling UK number 1 as well as his longest at the top of the chart at 8 weeks (9 if you factor in the return to the top in 2005). In August 2017 the Official Charts Company presented a listing of his biggest selling tracks and the Top 10 contain 4 from after 1961 – 'A Little Less Conversation' remix from 2002, 'The Wonder Of You' from 1970, 'Way Down' which reached the top after his death in 1977 and is not a classic by any means but was the song at the right place at the right time and 'Rock A Hula Baby / I Can't Help Falling In Love' from 1962.

1961 saw the start of musical styles changing. In 1961 the Beatles performed at the Cavern Club, including being supported by Priscilla White (later to find fame as Cilla Black) and, after multiple people come asking about the groups German records, Brian Epstein visits the Beatles concerts. Other stalwarts of the last five years are also on the way out as the Beatles are on the way in. Lonnie Donegan, who inspired the Beatles, has only two charting records (ignoring the two that stick around from 1960). While both are Top 10 hits, the first week of the Beatles chart success in 1962 is only two weeks prior to the final chart week of Lonnie Donegan in the Top 75.

245 artists made the chart in 1961, down from 256 in 1960 and up from 168 in 1959 (due in part to the increase in chart size). The highest new entry in the chart was on 2 November for Elvis (at 4 – 'His Latest Flame') which was the only new entry straight into the Top 10 all year (NME had 13). Partially, this was down to sample size and NME had 80 stores reporting in the year, while Melody Maker had 110 and Record Retailer still just 30. More detail on that can be found in the 1960 volume.

Sometimes chart years can be overlooked – with 70 to choose from more exciting stores (did 'Anarchy In The UK get to the top in 1977?) can make some years stand out over others and 1961 would not really be a classic chart year. But we can use this to reflect back on 10 years of UK charts. Coming, as it did, from one man in his office to a massively popular pastime and business tool (which is how the Record Retailer saw their chart) the chart has expanded significantly. Newspapers carried the chart and NME, Melody Maker, Disc, etc were bought in their thousands to see where the record was in the chart. For the next 50 years chart position would make – or break – careers (And I do mean 50 not 60, as currently it is not quite that simple).

10 Years gave us 127 number 1's which averages about 12 a year, a figure the 2020's is edging towards, but the 1990's and 2000's could only dream about. But that's for later volumes...

Chart Milestones

1961 continues the Top 50, with each week being printed in Record Retailer. The chart began as a single page in Record Retailer (See the image of 23 February 1961). The chart has a week ending date of 18 February (Saturday) which is the end of the sales used to calculate the chart.

From 23 November 1961 the chart became a double page pull out in the middle listed as 'Britain's Top 50' in big letters (They were trying hard to make sure that the chart was positioned as a true national chart, despite still having only 30 stores reporting sales).

BRITAIN'S TOP FIFTY week ending FEBRUARY 18th

SAILOR 1 (2) Petula Clark Pye TN 15324	SAILOR 14 (12) Anne Shelton Phillips PB 1095	I LOVE YOU 26 (34) Cliff Richard Columbia DB 4547	SAVE THE LAST DANCE FOR ME 38 (30) The Drifters London HLG 9281
ARE YOU LONESOME TONIGHT 2 (1) Elvis Presley R.C.A. RCA 1216	POETRY IN MOTION 15 (16) Johnny Tillotson London HLA 9231	STAT 27 (26) Maurice Williams Top Rank JAR 526	SAMANTHA 39 (—) Kenny Ball and His Jazz Band Pye TN3 2040
EBONY EYES WALK RIGHT BACK 3 (8) Everly Brothers Warner Bros. WB 23	NEW ORLEANS 16 (17) U.S. Bonds Top Rank JAR 527	A SCOTTISH SOLDIER 28 (24) Andy Stewart Top Rank JAR 512	WHAT TO DO 40 (32) Buddy Holly Coral Q 72419
YOU'RE SIXTEEN 4 (3) Johnny Burnette London HEG 9254	PILTOWN RIDES AGAIN 17 (14) The Piltdown Men Capitol CL 15175	SWAY 29 (21) Bobby Rydell Columbia DB 4545	THE WORLD IN MY ARMS 41 (38) Nat 'King' Cole Capitol CL 15176
WHO AM I, THIS IS IT 5 (13) Adam Faith Parlophone R 4735	MANY TEARS AGO 18 (15) Connie Francis M-G-M MGM 1151	WHEELS 30 (—) The String-A-Longs London HE 9279	CORINNE CORINNA 42 (42) Ray Peterson London HLG 9246
F.R.I. 6 (6) The Shadows Columbia DB 4586	LET'S JUMP THE BROOM-STICK 19 (21) Brenda Lee Brunswick 45823	ARE YOU SURE 31 (—) The Allisons Fontana F 204	NORTH TO ALASKA 43 (39) Johnny Horton Phillips PB 1062
RUBBER BALL 7 (4) Bobby Vee London HLG 9255	A THOUSAND STARS 20 (20) Billy Fury Decca F 11351	FIRST TASTE OF LOVE 32 (28) Ben E. King London HLG 9258	BLACK BEAR 44 (44) Frank Cordell H.M.V. POP 834
WILL YOU LOVE ME TOMORROW 8 (18) The Shirelles Top Rank JAR 540	COUNTING TEARDROPS 21 (15) Emile Ford Pye TN 15354	SHINE 33 (34) Joe Brown Pye TN 15322	C'EST SI BON 45 (—) Courty Telly M-G-M MGM 1158
PEPE 9 (5) Danny Eddy London HEW 9257	GATHER IN THE MUSHROOMS 22 (34) Benny Hill Pye TN 15327	IT'S NOW OR NEVER 34 (25) Elvis Presley R.C.A. RCA 1207	CHARLOT 46 (49) Rhet Stoller Decca F 11362
CALENDAR GIRL 10 (24) Neil Sedaka R.C.A. RCA 1220	PEPE 23 (22) Russ Conway Columbia DB 4564	GINCHY 35 (37) Bert Weedon Top Rank JAR 537	AFRICAN WALTZ 47 (—) Johnny Thanker Columbia DB 4590
NOONA SERA 11 (7) Mr. Acker Bilk Columbia DB 4544	RIDERS IN THE SKY 24 (—) The Ramrods London III 9282	DOLL HOUSE 36 (33) King Brothers Parlophone R 4725	AS LONG AS HE NEEDS ME 48 (48) Shirley Bassey Columbia DB 4490
PORTRAIT OF MY LOVE 12 (11) Nat Mono Parlophone R 4734	MYSTERY GIRL 25 (31) Jess Conrad Decca F 11352	PERFIDIA 37 (27) The Ventures London HED 9232	GTPSY BEAT 49 (—) The Packbeat Parlophone R 4729
RUBBER BALL 13 (9) Marty Wilde Phillips PB 1101			HAW FROM MADRID 50 (—) Tony Osborne H.M.V. POP 837

Average Chart Age

The next page details a listing of the Top 130 chart weeks, detailed by age of the chart. So, what exactly does this mean? Each chart week contains a number of records, all of which have been on the chart for varying lengths – the week count. Taking an average of the week count provides a measure of how old the chart is. A low number means it is quite young, whilst a high number is quite old. In 1993, for example, the average age was about 3 weeks – meaning that a record would, on average, spend three weeks on the chart. A chart in November 2021 has an average age of 23 weeks, so this can be used as a measure of the speed of the chart. In September 2018, for example, the Billboard Hot 100 had an average age of 11 weeks, which was up from a fairly consistent average of 7 or 8 weeks during much of the 1970's.

The listing on the next page shows these ranked, first by largest average age and then, on the following, by youngest. Any weeks in the current year that make the listing will always be highlighted in yellow. The list will change over time, and readers can use this as a guide to how the chart is changing and evolving. The listing also shows how many new entries, re-entries, climbers, fallers and non movers the chart has that week, as well as the number of positions in the chart.

Average Chart Age - Top 130 Chart Weeks

To calculate this statistic, each week has the week count added up and then this is divided by the number of positions on that weeks chart. The result is the average age of the chart. A low number means that the chart is full of new entries; a high number means the chart is full of older hits, or records that have been around for a while. This showcases the Top 130 weeks from the start of the charts existence to the current year, 1961, arranged from highest average downwards. Those dates in the current year are highlighted.

#	Date	Age	# Pos	None	Down	Up	New	RE	#	Date	Age	# Pos	None	Down	Up	New	RE	#	Date	Age	# Pos	None	Down	Up	New	RE
1	16.10.1953	11.920	12	3	3	4	2	0	46	19.08.1955	8.500	20	6	6	6	1	1	91	26.10.1956	7.810	31	2	13	10	5	1
2	09.10.1953	11.670	12	3	5	3	0	1	47	17.08.1961	8.460	50	4	21	20	4	1	92	20.03.1953	7.800	15	3	4	6	2	0
3	14.08.1953	11.000	12	0	7	4	1	0	48	12.08.1955	8.450	20	5	8	5	1	1	93	18.10.1957	7.800	30	4	15	8	2	1
4	07.08.1953	10.920	13	4	5	2	1	1	49	21.09.1956	8.430	30	3	13	8	4	2	94	03.04.1959	7.800	30	3	17	7	1	2
5	11.09.1953	10.860	14	4	5	3	0	2	50	03.12.1954	8.400	20	1	10	7	2	0	95	17.07.1959	7.800	30	9	12	6	1	2
6	02.10.1953	10.670	12	5	4	1	1	1	51	12.10.1956	8.400	30	2	10	14	3	1	96	20.02.1953	7.770	13	2	6	4	1	0
7	04.09.1953	10.460	13	2	5	4	1	1	52	08.07.1955	8.350	20	7	6	5	1	1	97	19.09.1958	7.770	30	6	13	9	1	1
8	11.01.1957	10.330	30	1	15	7	4	3	53	11.06.1954	8.330	12	5	4	2	1	0	98	09.09.1955	7.760	21	6	7	5	3	0
9	28.08.1953	10.250	12	2	5	4	1	0	54	27.08.1954	8.330	12	2	5	3	2	0	99	28.09.1961	7.760	50	2	22	18	8	0
10	25.09.1953	10.250	12	6	3	2	1	0	55	17.08.1956	8.330	30	2	13	10	3	2	100	10.07.1953	7.750	12	4	3	3	2	0
11	21.08.1953	10.150	13	3	4	4	1	1	56	10.08.1961	8.280	50	6	16	24	3	1	101	20.11.1953	7.750	12	2	4	4	2	0
12	18.09.1953	10.000	13	3	3	4	2	1	57	07.09.1956	8.270	30	6	11	9	3	1	102	18.11.1955	7.750	20	3	7	7	3	0
13	31.07.1953	9.920	13	3	3	6	0	1	58	19.10.1956	8.270	30	2	12	12	4	0	103	13.10.1960	7.740	50	4	24	18	4	0
14	24.07.1953	9.580	12	2	4	5	1	0	59	25.10.1957	8.270	30	3	16	9	2	0	104	26.12.1958	7.730	30	6	10	11	3	0
15	18.01.1957	9.530	30	3	15	7	4	1	60	14.01.1955	8.250	20	0	8	11	0	1	105	18.05.1956	7.700	30	4	12	11	3	0
16	13.11.1953	9.250	12	1	6	4	0	1	61	16.08.1957	8.230	30	3	14	12	1	0	106	03.01.1958	7.700	30	5	10	11	1	3
17	28.05.1954	9.250	12	4	2	5	0	1	62	10.01.1958	8.200	30	1	10	14	4	1	107	08.12.1960	7.700	50	4	24	16	6	0
18	23.07.1954	9.170	12	4	4	3	1	0	63	28.09.1956	8.130	30	4	11	9	5	1	108	10.04.1953	7.690	13	1	5	6	1	0
19	07.05.1954	9.080	12	0	6	5	1	0	64	01.11.1957	8.130	30	1	16	8	5	0	109	27.03.1953	7.670	12	3	7	1	1	0
20	20.08.1954	9.080	12	4	4	4	0	0	65	18.06.1954	8.080	12	5	4	1	1	1	110	21.05.1954	7.670	12	2	5	4	0	1
21	04.01.1957	9.030	30	4	11	12	1	2	66	13.08.1954	8.080	12	1	6	4	1	0	111	08.03.1957	7.670	30	6	9	13	2	0
22	17.09.1954	9.000	12	2	4	6	0	0	67	14.09.1961	8.080	50	4	26	12	7	1	112	17.04.1959	7.670	30	6	12	9	1	2
23	25.01.1957	8.930	30	2	11	12	4	1	68	04.12.1953	8.070	14	2	3	5	3	1	113	15.09.1960	7.640	50	5	24	16	4	1
24	01.02.1957	8.930	30	6	10	9	4	1	69	08.11.1957	8.070	30	6	13	6	5	0	114	13.09.1957	7.630	30	5	13	10	2	0
25	20.09.1957	8.930	30	5	11	11	2	1	70	31.07.1959	8.060	31	3	12	13	2	1	115	07.11.1958	7.630	30	3	14	9	4	0
26	03.09.1954	8.920	12	7	2	2	1	0	71	01.10.1954	8.050	20	4	6	2	5	3	116	30.04.1954	7.620	13	3	5	3	2	0
27	24.08.1961	8.920	50	4	24	17	4	1	72	05.01.1961	8.040	50	3	22	20	4	1	117	12.10.1961	7.620	50	4	24	18	2	2
28	30.08.1957	8.900	30	3	13	10	3	1	73	03.08.1961	8.020	50	3	22	21	3	1	118	19.10.1961	7.620	50	6	20	19	5	0
29	31.08.1961	8.900	50	4	23	17	6	0	74	27.02.1953	8.000	12	2	4	4	1	1	119	23.11.1956	7.600	30	5	10	10	4	1
30	30.10.1953	8.830	12	2	6	2	1	1	75	26.06.1953	8.000	12	1	4	7	0	0	120	21.08.1959	7.600	30	3	11	12	4	0
31	07.09.1961	8.800	50	8	20	16	6	0	76	10.09.1954	8.000	12	1	4	4	3	0	121	30.07.1954	7.580	12	5	3	2	1	1
32	21.09.1961	8.800	50	4	23	19	4	0	77	12.11.1954	8.000	20	3	7	6	3	1	122	22.03.1957	7.570	30	6	14	8	2	0
33	16.07.1954	8.750	12	3	4	4	1	0	78	02.09.1955	8.000	20	5	6	7	2	0	123	02.01.1959	7.570	30	4	11	11	3	1
34	24.09.1954	8.750	12	4	4	3	1	0	79	10.07.1959	8.000	30	4	12	10	4	0	124	15.07.1955	7.550	20	0	11	6	3	0
35	17.07.1953	8.670	12	6	2	3	1	0	80	26.11.1954	7.950	20	3	8	6	2	1	125	12.01.1961	7.540	50	2	23	16	9	0
36	26.08.1955	8.670	21	2	10	6	3	0	81	24.06.1955	7.950	21	0	10	8	2	1	126	09.11.1956	7.530	30	2	11	12	5	0
37	17.04.1953	8.620	13	3	5	4	1	0	82	02.11.1956	7.930	30	3	12	12	3	0	127	11.10.1957	7.530	30	2	14	11	3	0
38	10.08.1956	8.610	31	4	11	13	1	2	83	05.10.1956	7.900	30	2	13	11	1	3	128	18.07.1958	7.520	31	1	12	14	3	1
39	19.11.1954	8.600	20	1	9	7	1	2	84	15.11.1957	7.900	30	5	14	7	4	0	129	01.12.1960	7.520	50	2	24	18	5	1
40	23.08.1957	8.600	30	4	12	11	2	1	85	03.07.1959	7.870	30	5	13	9	1	2	130	31.12.1954	7.500	22	22	0	0	0	0
41	06.08.1954	8.580	12	3	4	5	0	0	86	07.08.1959	7.870	30	6	11	9	4	0	131	05.08.1955	7.500	20	5	8	6	1	0
42	13.03.1953	8.570	14	1	5	5	2	1	87	22.09.1960	7.860	50	6	19	19	5	1	132	03.08.1956	7.500	30	2	14	11	0	3
43	06.03.1953	8.540	13	2	5	4	1	1	88	21.01.1955	7.850	20	2	7	6	3	2	133	14.12.1956	7.500	30	4	10	10	3	3
44	03.07.1953	8.500	12	2	4	5	1	0	89	09.07.1954	7.830	12	5	2	3	1	1	134	01.09.1960	7.500	50	6	20	18	5	1
45	23.10.1953	8.500	12	0	5	4	3	0	90	10.04.1959	7.830	30	6	10	10	4	0	135	29.09.1960	7.500	50	3	23	17	5	2

The Number Ones

It's Number One – it's Pick Of The Pops!

All the chart countdown shows presented on any radio station would end with the biggest seller, and would spend their allotted duration teasing the listener as to who would be number 1. I, personally, remember listening to Mark Goodier count down the Radio 1 Top 40 in the early 2000's and teasing the new number 1. Getting to the top was the goal of all chart artists – making their way to the top to be the best seller of the last seven days.

Over the years a range of eclectic records have held the top spot – from the first in 1952 all the way through to almost a new number a week in the early 2000's, to an average of about 15 or so as the charts draw towards their 70th birthday. All that is of course helped by chart rules of inclusion and what the public are buying and, more recently, streaming.

This listing is the full listing of each and every number 1 record that hit the top during this year, in order, starting with the first one at the start of the year, listing how many weeks at the top and then the number of the number 1 in the sequence from the first in 1952, the title, the artist and, for the first time, an image of the cover (or the label for the 78 or 45's before 1992). It should be noted that while all records are listed with the 78 RPM number, if such was issued, a number of records are shown with a cover from the 45 release, to give variety to the images shown.

Number 1 List for The Official UK Singles Chart for 1961.

Entry Date: 05.01 1 week at the top.

Number: 110

Title: I Love You
Artist: Cliff Richard and the Shadows



Entry Date: 26.01 4 weeks at the top.

Number: 112

Title: Are You Lonesome Tonight?
Artist: Elvis Presley with The Jordanaires



Entry Date: 12.01 2 weeks at the top.

Number: 111

Title: Poetry In Motion
Artist: Johnny Tillotson



Entry Date: 23.02 1 week at the top.

Number: 113

Title: Sailor
Artist: Petula Clark, Peter Knight Orchestra and Chorus



The Statistics

Over the course of the 70 years that make up this series almost 60,000 records have charted (if you include the full Top 200 where available) made by thousands upon thousands of artists, groups, bands or cartoon characters. One of the things I like is to look at how the list of the Most Weeks On Chart Artists changes over time.

The listing showcases firstly, the ranking in the previous year and then the current year (with symbols for climb or drop) and then the artists peak reached that year, followed by the weeks they spent on the chart. Also shown are weeks added this calendar year and if that has changed their overall peak (with the previous year's peak shown for comparison). The entry and exit dates for the artist are shown, with those exiting in the current year shown in bold. An artist exiting this year with a similar peak and week count is always ranked higher than one exiting at an earlier date. Watch as your favourite artist climbs (or fails to climb!) this listing. The database compiles the entire listing, so once over 500 artists have charted, climbs into the 500 will be recorded and the last week column will show positions in the previous year from outside the Top 500.

Following this, we list a second Top 500 listing, focusing on just weeks on chart during the 1960's. The previous decades position is included, with the climbs or falls shown, together with the change in weeks on chart and peak position this decade over the previous also highlighted. Artists very definitely have era's when they were at their peak and charting regularly – Elvis for example has a period of this in 1956-1964 before a decline and then comeback (hence the 'Comback' special in the late 60's). This clearly shows this rise and fall as we move through the decade as we shall see in this and future volumes.

Lastly for this section is a listing of the most weeks on chart for a record in this year.

The Top 500 Most Weeks On Chart Artists

The listing here is the Top 500 Artists based on weeks in the chart (defined as the full charts as listed in the database), sorted by total weeks, then by most recent exit date, with a more recent exit ranked higher than an older one, and finally alphabetically by artist. Rank in the previous year, 1960, is shown as is the additional weeks currently charting artists have added over last year, and any change in peak position.

Rank		Peak		Wks	Artist	Entry Date	Exit Date	Changes In	
1960	1961							Weeks	Peak
2	1	↑ 1	1	428	Elvis Presley	11.05.1956	28.12.1961	88	
1	2	↓ 1	1	379	Frank Cordell	14.11.1952	04.05.1961	10	
8	3	↑ 5	1	341	Geoff Love	28.01.1955	28.12.1961	108	
10	4	↑ 6	1	308	The Shadows	12.09.1958	28.12.1961	118	
3	5	↓ 2	1	297	Wally Stott	15.05.1953	16.03.1961	9	
5	6	↓ 1	1	294	Lonnie Donegan	06.01.1956	09.11.1961	30	
4	7	↓ 3	1	282	Frankie Laine	14.11.1952	11.05.1961	1	
6	8	↓ 2	1	272	Nelson Riddle	14.11.1952	01.06.1961	9	
7	9	↓ 2	1	256	Pat Boone	18.11.1955	28.12.1961	14	
13	10	↑ 3	1	239	The Jordanaires	10.05.1957	23.11.1961	52	
21	11	↑ 10	1	225	Cliff Richard	12.09.1958	28.12.1961	64	
16	12	↑ 4	1	222	Connie Francis	04.04.1958	28.12.1961	54	
14	13	↑ 1	1	220	The Everly Brothers	12.07.1957	09.11.1961	44	
9	14	↓ 5	1	205	Perry Como	16.01.1953	26.05.1960		
11	15	↓ 4	1	190	David Whitfield	02.10.1953	24.11.1960		
12	16	↓ 4	1	189	Hugo Winterhalter	02.01.1953	08.03.1957		
17	17	↔	2	187	Nat "King" Cole	14.11.1952	28.12.1961	19	
26	18	↑ 8	1	179	Norrie Paramor	19.12.1952	28.12.1961	25	
15	19	↓ 4	1	173	Bill Haley	17.12.1954	29.03.1957		
27	20	↑ 7	1	168	Frank Sinatra	09.07.1954	07.12.1961	20	
18	21	↓ 3	1	166	Johnnie Ray	14.11.1952	05.02.1960		
19	22	↓ 3	1	166	Billy Vaughn	27.01.1956	05.12.1958		
20	23	↓ 3	1	165	Guy Mitchell	14.11.1952	17.03.1960		
24	24	↔	1	160	Don Costa	09.08.1957	28.12.1961	3	
32	25	↑ 7	1	159	Russ Conway	29.11.1957	28.12.1961	29	
23	26	↓ 3	1	159	The Ray Charles Singers	30.12.1955	26.05.1960		
22	27	↓ 5	1	159	Mitchell Ayres	30.12.1955	26.05.1960		
25	28	↓ 3	1	157	Paul Weston	14.11.1952	24.02.1956		
73	29	↑ 44	1	154	Rita Williams	09.08.1957	28.12.1961	79	2
30	30	↔	1	148	Frankie Vaughan	29.01.1954	28.12.1961	8	
28	31	↓ 3	1	148	Ray Conniff	25.11.1955	25.10.1957		
29	32	↓ 3	1	147	Tommy Steele	26.10.1956	14.09.1961	5	
31	33	↓ 2	1	139	Ray Martin	14.11.1952	07.12.1956		
55	34	↑ 21	2	137	Duane Eddy	05.09.1958	19.10.1961	43	
61	35	↑ 26	1	132	Adam Faith	20.11.1959	28.12.1961	48	
68	36	↑ 32	1	129	Mike Sammes	03.05.1957	19.10.1961	53	
33	37	↓ 4	1	128	Mitch Miller	14.11.1952	30.12.1955		
67	38	↑ 29	1	126	Shirley Bassey	15.02.1957	28.12.1961	49	
34	39	↓ 5	1	124	Doris Day	14.11.1952	26.09.1958		
59	40	↑ 19	1	119	Anthony Newley	01.05.1959	21.09.1961	34	
35	41	↓ 6	1	119	Dean Martin	18.09.1953	28.11.1958		
47	42	↑ 5	2	118	Tony Osborne	25.11.1955	26.10.1961	13	
36	43	↓ 7	1	117	Percy Faith	14.11.1952	29.09.1960		
37	44	↓ 7	1	117	Winifred Atwell	12.12.1952	08.01.1960		
38	45	↓ 7	3	116	Roland Shaw	22.04.1955	24.11.1960		
39	46	↓ 7	1	114	Ruby Murray	03.12.1954	09.10.1959		
40	47	↓ 7	1	113	Ronnie Hilton	26.11.1954	04.09.1959		
41	48	↓ 7	1	112	Buddy Cole	14.11.1952	30.08.1957		
48	49	↓ 1	1	110	Alma Cogan	19.03.1954	25.05.1961	6	
42	50	↓ 8	1	109	Paul Anka	09.08.1957	15.09.1960		
43	51	↓ 8	1	109	Dick Jacobs	01.04.1955	01.09.1960		
44	52	↓ 8	1	108	Jack Pleis	02.07.1954	27.02.1959		
49	53	↓ 4	2	108	Max Bygraves	14.11.1952	29.06.1961	5	
75	54	↑ 21	1	107	Bobby Darin	01.08.1958	28.12.1961	34	
45	55	↓ 10	3	106	Malcolm Vaughan	01.07.1955	12.06.1959		
60	56	↑ 4	1	105	Buddy Holly	06.12.1957	05.10.1961	20	
46	57	↓ 11	1	105	Eddie Fisher	02.01.1953	08.03.1957		
50	58	↓ 8	3	102	Ray Ellis	12.07.1957	26.05.1960		
89	59	↑ 30	1	100	Petula Clark	11.06.1954	28.12.1961	38	4

The Top 500 Most Weeks On Chart Artists Of The 1960's So Far

The listing here is the Top 500 Artists based on weeks in the chart (defined as the full charts as listed in the database), sorted by total weeks, then by most recent exit date, with a more recent exit ranked higher than an older one, and finally alphabetically by artist. Rank in the previous decade is shown as is the additional weeks currently charting artists have added since the start of this decade, and any change in peak position.

Rank 1950's	1960's	Peak	Wks	Artist	This Decades		Changes In		
					Entry Date	Exit Date	Weeks	Peak	
52	1	↑ 51	1	226	The Shadows	01.01.1960	28.12.1961	144	
15	2	↑ 13	1	185	Geoff Love	01.01.1960	28.12.1961	29	
53	3	↑ 50	1	143	Cliff Richard	01.01.1960	28.12.1961	61	
2	4	↓ 2	1	130	Elvis Presley	12.02.1960	28.12.1961	-168	
144	5	↑ 139	1	128	Rita Williams	31.03.1960	28.12.1961	102	19
362	6	↑ 356	1	126	Adam Faith	01.01.1960	28.12.1961	120	
35	7	↑ 28	2	109	Connie Francis	01.01.1960	28.12.1961	-4	1
33	8	↑ 25	1	106	The Everly Brothers	12.02.1960	09.11.1961	-8	
97	9	↑ 88	2	96	Duane Eddy	01.01.1960	19.10.1961	55	6
NE	10		4	95	John Barry	04.03.1960	08.06.1961	95	
20	11	↑ 9	1	93	The Jordanares	07.04.1960	23.11.1961	-53	
120	12	↑ 108	1	88	Anthony Newley	15.01.1960	21.09.1961	57	3
7	13	↓ 6	1	81	Lonnie Donegan	24.03.1960	09.11.1961	-132	
303	14	↑ 289	2	80	Billy Fury	10.03.1960	28.12.1961	70	18
305	15	↑ 290	1	79	Emile Ford	01.01.1960	06.07.1961	70	
NE	16		5	79	Mr. Acker Bilk	22.01.1960	28.12.1961	79	
86	17	↑ 69	1	77	Shirley Bassey	31.03.1960	28.12.1961	28	
79	18	↑ 61	1	76	Mike Sammes	01.01.1960	19.10.1961	23	5
249	19	↑ 230	3	75	Johnny and the Hurricanes	01.01.1960	24.08.1961	62	
NE	20		4	68	Brenda Lee	17.03.1960	30.11.1961	68	
47	21	↑ 26	7	67	Russ Conway	01.01.1960	28.12.1961	-25	1
NE	22		8	66	Stan Applebaum	24.03.1960	24.08.1961	66	
92	23	↑ 69	2	65	Bobby Darin	01.01.1960	28.12.1961	23	1
NE	24		1	64	Roy Orbison	28.07.1960	16.11.1961	64	
414	25	↑ 389	2	59	Joe Sherman	01.01.1960	09.02.1961	55	22
NE	26		1	57	Helen Shapiro	23.03.1961	28.12.1961	57	
180	27	↑ 153	3	56	Neil Sedaka	01.01.1960	28.12.1961	36	
NE	28		19	54	Andy Stewart	15.12.1960	19.10.1961	54	
NE	29		19	53	Bernard Ebbinghouse	12.01.1961	19.10.1961	53	
NE	30		3	52	Bobby Vee	19.01.1961	28.12.1961	52	
29	31	↓ 2	11	50	Frank Sinatra	10.03.1960	07.12.1961	-68	1
137	32	↑ 105	4	48	Craig Douglas	22.01.1960	28.09.1961	22	1
NE	33		1	47	Jimmy Jones	17.03.1960	13.04.1961	47	
NE	34		1	46	Johnny Preston	12.02.1960	29.12.1960	46	
NE	35		3	45	Johnny Burnette	29.09.1960	07.09.1961	45	
6	36	↓ 30	10	45	Nelson Riddle	10.03.1960	01.06.1961	-182	1
172	37	↑ 135	1	43	Eddie Cochran	22.01.1960	21.12.1961	21	6
281	38	↑ 243	4	43	Harry Robinson	22.01.1960	09.11.1961	32	13
427	39	↑ 388	9	43	Glenn Osser	29.01.1960	02.02.1961	40	20
59	40	↑ 19	2	42	Tony Osborne	19.05.1960	26.10.1961	-34	4
NE	41		7	42	Bobby Rydell	10.03.1960	04.05.1961	42	
NE	42		1	41	The Temperance Seven	30.03.1961	28.12.1961	41	
101	43	↑ 58	9	41	Johnny Mathis	29.01.1960	02.02.1961	1	4
NE	44		3	40	Matt Monro	15.12.1960	12.10.1961	40	
111	45	↑ 66	4	40	The King Brothers	14.04.1960	11.05.1961	6	6
4	46	↓ 42	5	40	Wally Stott	29.01.1960	16.03.1961	-217	1
19	47	↓ 28	10	40	Nat "King" Cole	12.02.1960	28.12.1961	-107	2
77	48	↑ 29	11	39	Fats Domino	01.01.1960	30.11.1961	-20	6
NE	49		1	38	Del Shannon	27.04.1961	28.12.1961	38	
76	50	↑ 26	1	38	Petula Clark	26.01.1961	28.12.1961	-24	4
NE	51		12	38	Jim Reeves	24.03.1960	28.12.1961	38	
260	52	↑ 208	15	38	Gene Vincent	08.01.1960	21.09.1961	25	16
341	53	↑ 288	3	37	Freddy Cannon	01.01.1960	18.05.1961	29	17
NE	54		8	36	Ken Dodd	07.07.1960	26.10.1961	36	
NE	55		14	36	The Piltdown Men	08.09.1960	27.04.1961	36	
NE	56		3	35	Kenny Ball	23.02.1961	28.12.1961	35	
73	57	↑ 16	7	35	Marty Wilde	01.01.1960	07.12.1961	-29	2
NE	58		3	33	Clarence 'Frogman' Henry	04.05.1961	28.09.1961	33	
397	59	↑ 338	7	33	Sam Cooke	07.07.1960	26.10.1961	28	23
63	60	↑ 3	12	33	Buddy Holly	28.04.1960	05.10.1961	-39	1

Most Weeks On Chart

245 artists made the chart during the year 1961. The full listing is presented below, sorted by most weeks on chart (highest first), then by peak position, entry date, last week on the chart and finally, in the event of a tie, alphabetically by artist name.

#	Entry	Wks	Peak	Artist credit	#	Entry	Wks	Peak	Artist credit	#	Entry	Wks	Peak	Artist credit
1	05.01	118	1	The Shadows	43	05.01	23	8	Johnny and the Hurricanes	85	31.08	13	14	Don Gibson
2	05.01	108	1	Geoff Love	44	05.01	23	9	Marty Wilde	86	02.03	13	17	Buzz Clifford
3	05.01	88	1	Elvis Presley	45	20.04	23	9	Craig Douglas	87	02.03	13	17	Tony Piano
4	05.01	79	1	Rita Williams	46	13.04	22	1	Floyd Cramer	88	23.02	13	23	Tony Osborne
5	05.01	64	1	Cliff Richard	47	29.06	22	21	Joe Loss	89	05.01	12	1	Johnny Tillotson
6	23.03	57	1	Helen Shapiro	48	02.02	22	27	Ben E. King	90	23.02	12	8	The Ramrods
7	05.01	54	5	Connie Francis	49	23.02	21	2	The Allisons	91	28.09	12	9	Laurie Johnson
8	12.01	53	19	Bernard Ebbinghouse	50	23.02	21	9	Johnny Dankworth	92	05.01	12	25	Dave Cavanaugh
9	12.01	53	19	Mike Sammes	51	25.05	20	1	Danny Williams	93	05.10	11	5	Carol King
10	12.01	53	19	Andy Stewart	52	26.01	20	12	Buddy Holly	94	05.10	11	5	Tony Orlando
11	05.01	52	1	The Jordanaires	53	05.01	20	15	Frank Sinatra	95	05.01	11	6	Sophia Loren
12	19.01	52	3	Bobby Vee	54	15.06	20	15	Eddie Cochran	96	05.01	11	6	Peter Sellers
13	19.01	50	2	Billy Fury	55	05.01	19	8	Nina and Frederik	97	14.09	11	6	Cliff Parman
14	05.01	49	1	Shirley Bassey	56	05.01	19	14	The Piltdown Men	98	19.10	11	6	The Raelets
15	05.01	48	4	Adam Faith	57	12.01	19	19	The King Brothers	99	19.10	11	17	Hayley Mills
16	12.01	46	8	Stan Applebaum	58	05.01	19	25	Nat "King" Cole	100	19.01	11	23	Johnny Horton
17	05.01	45	6	Mr. Acker Bilk	59	05.01	18	4	Emile Ford	101	06.04	11	23	Pearl Carr
18	05.01	44	1	The Everly Brothers	60	15.06	18	28	Ken Dodd	102	06.04	11	23	Teddy Johnson
19	05.01	43	2	Duane Eddy	61	05.01	17	1	Peter Knight	103	23.03	11	26	Gene Pitney
20	30.03	41	1	The Temperance Seven	62	13.04	17	1	The Marcells	104	26.10	10	2	Jimmy Dean
21	26.01	38	1	Petula Clark	63	07.09	17	1	The Highwaymen	105	26.10	10	6	Dave Brubeck
22	27.04	38	1	Del Shannon	64	09.03	17	6	Ferrante And Teicher	106	19.01	10	11	Dion
23	05.01	37	3	Matt Monro	65	05.01	17	12	Bobby Rydell	107	26.01	10	18	Jess Conrad
24	23.02	35	3	Kenny Ball	66	23.02	16	8	The String-A-Longs	108	14.09	10	21	The Viscounts
25	16.03	34	2	Bobby Darin	67	05.01	15	2	The Drifters	109	24.08	10	23	Dorothy Squires
26	05.01	34	5	Anthony Newley	68	09.02	15	4	Luther Dixon	110	13.04	10	24	The Outlaws
27	04.05	33	3	Clarence 'Frogman' Henry	69	09.02	15	4	The Shirelles	111	16.02	10	25	Frank Cordell
28	01.06	32	1	Eden Kane	70	05.01	15	6	Ray Charles	112	21.09	10	25	Ral Donner
29	05.01	32	9	Roy Orbison	71	31.08	15	16	The Springfields	113	30.03	10	27	Chubby Checker
30	05.01	31	3	Johnny Burnette	72	01.06	15	22	Gene Vincent	114	07.09	10	29	Terry Lightfoot
31	22.06	31	8	Karl Denver	73	06.07	14	4	Pat Boone	115	16.02	10	30	Brook Benton
32	05.01	30	6	Lonnie Donegan	74	30.03	14	5	Tony Hatch	116	16.02	10	30	Belford Hendricks
33	05.01	29	7	Russ Conway	75	18.05	14	7	Linda Scott	117	09.03	10	33	The Krew Kats
34	02.02	28	8	Neil Sedaka	76	27.07	14	7	Sam Cooke	118	05.01	9	10	Wally Stott
35	19.01	27	12	Brenda Lee	77	27.07	14	7	René Hall	119	02.11	9	11	Glen Stuart
36	03.08	26	1	John Leyton	78	04.05	14	10	Jerry Lee Lewis	120	05.01	9	14	Maurice Williams
37	20.04	26	9	Harry Robinson	79	16.02	14	12	Benny Hill	121	05.01	9	14	the Zodiacs
38	28.09	25	1	Norrie Paramor	80	05.01	14	27	Mark Wynter	122	05.01	9	20	Nelson Riddle
39	30.03	24	5	The Brook Brothers	81	05.01	13	4	The Ventures	123	02.11	9	22	Troy Shondell
40	19.01	24	7	Gary (U.S.) Bonds	82	14.09	13	5	Cleo Laine	124	27.07	9	29	The Fireballs
41	01.06	23	2	Ricky Nelson	83	05.01	13	14	Mike Preston	125	09.11	8	1	Frankie Vaughan
42	05.01	23	4	John Barry	84	05.01	13	14	Charlie Drake	126	26.01	8	10	Anne Shelton

Most Weeks On Chart By Record

338 records made the chart during the year 1961. The full listing is presented below, sorted by most weeks on chart (highest first), then by peak position, entry date, last week on the chart and finally, in the event of a tie, alphabetically by record title.

#	Entry	Wks	Peak	Title - Artist
1	12.01	40	19	A Scottish Soldier (Green Hills Of Tyrol) - Andy Stewart with The Michael Sammes Singers, Orchestra conducted by Bernard Ebbinghouse
2	09.03	27	1	Wooden Heart - Elvis Presley
3	29.06	23	1	You Don't Know - Helen Shapiro
4	11.05	23	3	Halfway To Paradise - Billy Fury
5	27.04	22	1	Runaway - Del Shannon
6	01.06	21	1	Well I Ask You - Eden Kane
7	23.02	21	9	African Waltz - Johnny Dankworth And His Orchestra
8	29.06	21	21	Wheels - Cha Cha - Joe Loss and His Orchestra
9	23.03	20	3	Don't Treat Me Like A Child - Helen Shapiro
10	11.05	20	3	The Frightened City - The Shadows
11	22.06	20	8	Marcheta - Karl Denver
12	04.05	19	3	But I Do - Clarence 'Frogman' Henry
13	09.02	19	6	F.B.I. - The Shadows
14	27.07	18	1	Reach For The Stars / Climb Ev'ry Mountain - Shirley Bassey with Geoff Love And His Orchestra
15	01.06	18	2	Hello Mary Lou - Ricky Nelson
16	15.06	18	28	Once In Every Lifetime - Ken Dodd
17	15.06	17	4	Pasadena - The Temperance Seven
18	09.03	17	6	Theme From "Exodus" - Ferrante And Teicher
19	11.05	17	6	You'll Never Know - Shirley Bassey with the Rita Williams Singers and Geoff Love and His Orchestra
20	13.07	17	7	That's My Home - Mr. Acker Bilk and his Paramount Jazz Band
21	09.02	16	1	Walk Right Back / Ebony Eyes - The Everly Brothers
22	30.03	16	1	You're Driving Me Crazy - The Temperance Seven
23	23.02	16	2	Are You Sure - The Allisons
24	13.04	16	4	More Than I Can Say / Staying In - Bobby Vee
25	23.02	16	8	Wheels - The String-A-Longs
26	15.06	16	15	Weekend - Eddie Cochran
27	19.01	15	1	Are You Lonesome Tonight? - Elvis Presley with The Jordanaires
28	26.01	15	1	Sailor - Petula Clark, Peter Knight Orchestra and Chorus
29	25.05	15	1	Surrender (Torna a Surriento) - Elvis Presley with The Jordanaires
30	15.06	15	1	Temptation - The Everly Brothers
31	03.08	15	1	Johnny Remember Me - John Leyton
32	13.07	15	3	Romeo - Petula Clark
33	09.02	15	4	Will You Love Me Tomorrow - The Shirelles conducted by Luther Dixon
34	11.05	15	8	Have A Drink On Me - Lonnie Donegan and his Group
35	25.05	15	9	Runnin' Scared - Roy Orbison
36	19.01	15	12	Let's Jump The Broomstick - Brenda Lee
37	23.02	15	13	Samantha - Kenny Ball And His Jazz Band
38	13.04	14	1	On The Rebound - Floyd Cramer
39	07.09	14	1	Michael - The Highwaymen
40	28.09	14	1	Walkin' Back To Happiness - Helen Shapiro with Accompaniment designed by Norrie Paramor
41	12.01	14	2	Pepe - Duane Eddy
42	02.03	14	3	Theme For A Dream - Cliff Richard and the Shadows
43	22.06	14	3	A Girl Like You - Cliff Richard and the Shadows

#	Entry	Wks	Peak	Title - Artist
44	30.03	14	4	Gee Whiz It's You - Cliff Richard and the Shadows
45	09.02	14	5	Who Am I? - Adam Faith
46	16.03	14	5	Where The Boys Are / Baby Roo - Connie Francis
47	30.03	14	5	Warpaint - The Brook Brothers with the Tony Hatch Group
48	05.01	14	7	Buona Sera - Mr. Acker Bilk and his Paramount Jazz Band
49	27.07	14	7	Cupid - Sam Cooke, Orchestra Conducted by Rene Hall
50	02.02	14	8	Calendar Girl - Neil Sedaka With Stan Applebaum And His Orchestra
51	29.06	14	9	Time - Craig Douglas With Harry Robinson And His Orchestra
52	04.05	14	10	What'd I Say - Jerry Lee Lewis
53	06.07	14	12	Baby I Don't Care - Buddy Holly
54	13.04	13	1	Blue Moon - The Marcels
55	16.03	13	2	Lazy River - Bobby Darin
56	05.01	13	3	Portrait Of My Love - Matt Monro
57	14.09	13	5	You'll Answer To Me - Cleo Laine
58	18.05	13	7	I've Told Every Little Star - Linda Scott
59	20.07	13	7	Quarter To Three - U.S. Bonds
60	03.08	13	10	How Many Tears - Bobby Vee
61	31.08	13	14	Sea Of Heartbreak - Don Gibson
62	02.03	13	17	Baby Sittin' Boogie - Buzz Clifford, Orchestra conducted by Tony Piano
63	05.10	13	23	Sucu - Sucu - Nina & Frederik
64	01.06	13	28	The Battle's O'er - Andy Stewart with The Michael Sammes Singers, Orchestra conducted by Bernard Ebbinghouse
65	07.09	12	1	Kon - Tiki - The Shadows
66	07.09	12	2	Jealousy - Billy Fury
67	12.01	12	3	You're Sixteen - Johnny Burnette
68	07.09	12	4	Wild In The Country / I Feel So Bad - Elvis Presley with The Jordanaires / Elvis Presley
69	09.03	12	5	My Kind Of Girl - Matt Monro
70	16.03	12	6	And The Heavens Cried - Anthony Newley
71	13.07	12	6	You Always Hurt The One You Love - Clarence 'Frogman' Henry
72	14.09	12	6	Hats Off To Larry - Del Shannon
73	23.02	12	8	Riders In The Sky - The Ramrods
74	18.05	12	9	Little Devil - Neil Sedaka With Stan Applebaum And His Orchestra
75	28.09	12	9	Sucu Sucu - The Laurie Johnson Orchestra
76	13.04	12	12	Little Boy Sad - Johnny Burnette
77	05.01	11	1	I Love You - Cliff Richard and the Shadows
78	19.10	11	3	When The Girl In Your Arms Is The Girl In Your Heart - Cliff Richard With Norrie Paramor And His Orchestra
79	19.01	11	4	Rubber Ball - Bobby Vee
80	05.10	11	5	Bless You - Tony Orlando, Arranged and Conducted by Carol King
81	31.08	11	6	Michael, Row The Boat / Lumbered - Lonnie Donegan and his Group
82	14.09	11	6	Together - Connie Francis, Orchestra conducted by Cliff Parman
83	19.10	11	6	Hit The Road Jack - Ray Charles and His Orchestra (Vocal by Ray Charles with The Raelets)
84	19.10	11	8	Mexicali Rose - Karl Denver
85	14.09	11	10	Get Lost - Eden Kane
86	12.10	11	10	You Must Have Been A Beautiful Baby - Bobby Darin

The Official UK Singles Chart

1961

Entry	Date of		Weeks on			Rank	Title	Peak	Artist	Length	Label	Cat Number
	Peak	Exit	CH	75	40							
1												
09.03	23.03	07.09	27	27	22	11	6	1	Wooden Heart	01:58	RCA	7": 45-RCA-1226
03.08	31.08	09.11	15	15	15	10	4	2	Johnny Remember Me	02:39	Top Rank	7": JAR 577
02.11	09.11	28.12	9	9	9	8	4	3	(Marie's The Name) His Latest Flame / Little Sister	02:06	RCA	7": 45-RCA 1258
25.05	01.06	31.08	15	15	15	7	4	4	Surrender (Torna a Surriento)	01:51	RCA	7": 45-RCA 1227
19.01	26.01	27.04	15	15	14	7	4	5	Are You Lonesome Tonight?	03:06	RCA	7": 45-RCA 1216
29.06	10.08	30.11	23	23	20	12	3	6	You Don't Know	02:41	Columbia	7": 45-DB 4670
27.04	29.06	21.09	22	22	19	12	3	7	Runaway	02:20	London	7": 45-HLX 9317
09.02	02.03	25.05	16	16	16	11	3	8	Walk Right Back / Ebony Eyes	02:19	Warner Bros.	7": 45-WB.33
28.09	19.10	28.12	14	14	14	11	3	9	Walkin' Back To Happiness	02:30	Columbia	7": 45-DB 4715
09.11	07.12	28.12	8	8	7	6	3	10	Tower Of Strength	02:09	Philips	7": PB 1195
15.06	20.07	21.09	15	15	14	9	2	11	Temptation	02:08	Warner Bros.	7": 45-WB.42
13.04	04.05	06.07	13	13	12	7	2	12	Blue Moon	02:15	Pye International	7": 7N 25073
05.01	12.01	09.03	10	10	10	7	2	13	Poetry In Motion	02:30	London	7": 45-HLA 9231
01.06	03.08	19.10	21	21	19	11	1	14	Well I Ask You	02:17	Decca	7": 45-F 11353
27.07	21.09	30.11	18	18	17	8	1	15	Reach For The Stars / Climb Ev'ry Mountain	02:57	Columbia	7": 45-DB 4685
30.03	25.05	13.07	16	16	16	7	1	16	You're Driving Me Crazy	03:59	Parlophone	7": 45-R 4757
26.01	23.02	04.05	15	15	14	7	1	17	Sailor	02:57	Pye	7": 7N 15324
07.09	05.10	30.11	12	12	12	7	1	18	Kon - Tiki	01:54	Columbia	7": 45-DB 4698
02.11	28.12	28.12	9	9	8	6	1	19	Moon River	02:40	HMV	7": 45-POP 932
13.04	18.05	13.07	14	14	13	5	1	20	On The Rebound	02:05	RCA	7": 45-RCA 1231
07.09	12.10	07.12	14	14	12	5	1	21	Michael	02:45	HMV	7": 45-POP 910
05.01	05.01	16.03	11	11	10	5	1	22	I Love You	02:04	Columbia	7": 45-DB 4547

2

23.02	09.03	08.06	16	16	16	10	6	23	Are You Sure	02:04	Fontana	7": H 294
01.06	06.07	28.09	18	18	18	12	2	24	Hello Mary Lou	02:21	London	7": 45-HLP 9347
05.10	26.10	07.12	10	10	10	5	2	25	Wild Wind	02:13	Top Rank	7": JAR 585
26.10	23.11	28.12	10	10	10	7	1	26	Big Bad John	02:57	Philips	7": PB 1187
12.01	02.02	13.04	14	14	13	6	1	27	Pepe	01:57	London	7": 45-HLW 9257
07.09	05.10	23.11	12	12	11	5	1	28	Jealousy	02:49	Decca	7": 45-F 11384
16.03	27.04	08.06	13	13	11	4	1	29	Lazy River	02:30	London	7": 45-HLK 9303
05.01	05.01	02.03	9	9	8	4	1	30	Save The Last Dance For Me	02:30	London	7": 45-HLK 9201

3

11.05	01.06	21.09	20	20	18	9	3	31	The Frightened City	02:20	Columbia	7": 45-DB 4637
02.03	16.03	01.06	14	14	13	7	3	32	Theme For A Dream	02:07	Columbia	7": 45-DB 4593
11.05	03.08	12.10	23	23	21	15	2	33	Halfway To Paradise	02:28	Decca	7": 45-F 11349
26.10	14.12	28.12	10	10	10	7	2	34	Take Good Care Of My Baby	02:27	London	7": 45-HLG 9438
19.10	02.11	28.12	11	11	11	6	2	35	When The Girl In Your Arms Is The Girl In Your Heart	02:23	Columbia	7": 45-DB 4716
05.01	19.01	30.03	13	13	10	5	2	36	Portrait Of My Love	02:46	Parlophone	7": 45-R 4714
04.05	22.06	07.09	19	19	19	7	1	37	But I Do	02:18	Pye International	7": 7N 25078
13.07	24.08	19.10	15	15	14	7	1	38	Romeo	02:41	Pye	7": 7N 15361
23.03	11.05	03.08	20	20	18	6	1	39	Don't Treat Me Like A Child	02:35	Columbia	7": 45-DB 4589
22.06	20.07	21.09	14	14	14	6	1	40	A Girl Like You	02:33	Columbia	7": 45-DB 4667
12.01	16.02	30.03	12	12	12	6	1	41	You're Sixteen	01:56	London	7": 45-HLG 9254
09.11	28.12	28.12	8	8	7	4	1	42	Midnight In Moscow	03:02	Pye Jazz	7": 7NJ 2049

The Official UK Singles Chart

Listing, sorted alphabetically by artist, every record to chart between 5 January 1961 and 28 December 1961

Chart History For The Official UK Singles Chart Between 5 January 1961 and 28 December 1961

Entry Peak Weeks on chart, Title (Number 1 Number) (Awards symbols, if any for this record in this period) (*Composer*) *Full artist credit (if different)* B-Side (Or EP/Album track listing if any charted on this chart) Label (Catalogue Number) Duration. Notes are presented below the title for some entries. Entries are sorted by artist, then by entry date and finally, in the event of ties, by peak position and finally weeks on chart. All re-entries are shown as separate entries, but track listings of any albums or EP's which re-entered the chart are not shown for their re-entries. BPI Awards are shown after the weeks on chart, if appropriate, as follows: ♦ = Silver Award; * = Gold Award, ◆ = Platinum Award (with following numbers to denote multi-platinum levels). Disc Awards are shown as ⊙ for a Silver Award (250,000 sales) and * for a Gold Award (1 million sales). Awards are only shown if awarded prior to the final chart date of this book.

A

			The Allisons				Entry: 23.02.1961	Hits: 2	Peak: 2	Weeks: 21
23.02.1961	2	16	⊙	Are You Sure (<i>Bob Allison / John Allison</i>)		There's One Thing More			Fontana 7": H 294	02:04
18.05.1961	34	5		Words (<i>Bobby Day / John Alford</i>)		Blue Tears			Fontana 7": H 304	02:14
			Bobby Angelo				Entry: 10.08.1961	Hits: 1	Peak: 30	Weeks: 6
10.08.1961	30	6		Baby Sittin' (<i>Myron Wachendorf</i>)	<i>Bobby Angelo and The Tuxedos</i>	Skinny Lizzie			HMV 7": 45-POP 892	02:02
			Stan Applebaum				Entry: 12.01.1961	Hits: 4	Peak: 8	Weeks: 46
12.01.1961	12	9		Many Tears Ago (<i>Winfield Scott</i>)	<i>Connie Francis, Orcherstra conducted by Stan Applebaum</i>	Senza Mama (With No One)			MGM 7": 45-MGM-1111	01:53
02.02.1961	8	14		Calendar Girl (<i>Howard Greenfield / Neil Sedaka</i>)	<i>Neil Sedaka With Stan Applebaum And His Orchestra</i>	The Same Old Fool			RCA 7": 45-RCA 1220	02:32
18.05.1961	9	12		Little Devil (<i>Howard Greenfield / Neil Sedaka</i>)	<i>Neil Sedaka With Stan Applebaum And His Orchestra</i>	I Must Be Dreaming			RCA 7": 45-RCA 1236	02:42
15.06.1961	12	11		Breakin' In A Brand New Broken Heart (<i>Howard Greenfield / Jack Keller</i>)		Someone Else's Boy			MGM 7": 45-MGM-1136	02:35
				<i>Connie Francis, Orchestra conducted by Stan Applebaum</i>						
			The Avons				Entry: 26.01.1961	Hits: 1	Peak: 30	Weeks: 4
26.01.1961	30	4		Rubber Ball (<i>Aaron Schroeder / Anne Orlowski</i>)		Cool And Cosy			Columbia 7": 45-DB 4569	02:13

Chart For The Week Ending 5 January 1961										This chart contains 50 entries with 22 falling, 20 climbing, 3 non-movers, 1 re-entry and 4 new entries. The average age of chart entries is 8.04 weeks.				
6	1	1	↔	I Love You (N1 #110) - Cliff Richard and the Shadows	Columbia 7": 45-DB 4547	02:04	1	01.12.1960	⊙	29.12.1960				
10	5	2	↑3	Save The Last Dance For Me - The Drifters	London 7": 45-HLK 9201	02:30	2	03.11.1960	⊙	01.12.1960				
6	6	3	↑3	Poetry In Motion - Johnny Tillotson	London 7": 45-HLA 9231	02:30	1	01.12.1960		12.01.1961				
8	7	4	↑3	Lonely Pup (In A Christmas Shop) - Adam Faith with the children and accomp. Directed by John Barry	Parlophone 7": 45-R 4708	01:47	4	17.11.1960		22.12.1960				
7	3	5	↓2	Strawberry Fair - Anthony Newley	Decca 7": 45-F 11295	02:21	3	24.11.1960		15.12.1960				
10	2	6	↓4	It's Now Or Never (O Sole Mio) - Elvis Presley with The Jordanaires	RCA 7": 45-RCA 1207	03:16	1	03.11.1960	*	03.11.1960				
9	13	7	↑6	Goodness Gracious Me! - Peter Sellers & Sophia Loren	Parlophone 7": 45-R 4702	03:01	4	10.11.1960		01.12.1960				
8	4	8	↓4	Little Donkey - Nina and Frederik With The Jørn Grauengaard Quintet	Columbia 7": 45-DB 4536	03:16	3	17.11.1960	⊙	08.12.1960				
6	12	9	↑3	Perfidia - The Ventures	London 7": 45-HLG 9232	02:03	4	01.12.1960		19.01.1961				
15	8	10	↓2	Rocking Goose - Johnny and the Hurricanes	London 7": 45-HLX 9190	01:47	3	29.09.1960	⊙	17.11.1960				
5	14	11	↑3	Counting Teardrops - Emile Ford And The Checkmates	Pye 7": 7N 15314	02:18	4	08.12.1960		26.01.1961				
4	16	12	↑4	Portrait Of My Love - Matt Monro	Parlophone 7": 45-R 4714	02:46	3	15.12.1960		19.01.1961				
9	9	13	↓4	Man Of Mystery / The Stranger - The Shadows	Columbia 7": 45-DB 4530	01:58	5	10.11.1960		01.12.1960				
7	15	14	↑1	Lively - Lonnie Donegan and his Group	Pye 7": 7N 15312	03:18	13	24.11.1960		08.12.1960				
10	10	15	↓5	My Heart Has A Mind Of It's Own - Connie Francis, Orchestra Conducted by Joe Sherman	MGM 7": 45-MGM-1100	02:33	3	03.11.1960		24.11.1960				
6	11	16	↓5	Gurney Slade - Max Harris with His Group	Fontana 7": H 282	02:07	11	01.12.1960		29.12.1960				
14	21	17	↑4	My Love For You - Johnny Mathis with Orchestra arranged and conducted by Glenn Osser	Fontana 7": H 267	03:04	9	06.10.1960		10.11.1960				
4	24	18	↑6	Like Strangers - The Everly Brothers	London 7": 45-HLA 9250	01:59	11	15.12.1960		19.01.1961				
11	19	19	↔	Blue Angel - Roy Orbison	London 7": 45-HLU 9207	02:49	11	27.10.1960		22.12.1960				
7	20	20	↔	Ol' Mac Donald - Frank Sinatra, Orchestra Conducted by Nelson Riddle	Capitol 7": 45-CL 15168	02:36	11	24.11.1960		08.12.1960				
23	17	21	↓4	As Long As He Needs Me - Shirley Bassey and The Rita Williams Singers with Geoff Love and His Orchestra	Columbia 7": 45-DB 4490	03:00	2	04.08.1960	⊙	27.10.1960				
11	23	22	↑1	Mr. Custer - Charlie Drake	Parlophone 7": 45-R 4701	03:07	12	27.10.1960		24.11.1960				
15	18	23	↓5	Dreamin' - Johnny Burnette	London 7": 45-HLG 9172	02:21	5	29.09.1960		10.11.1960				
4	28	24	↑4	Sway - Bobby Rydell	Columbia 7": 45-DB 4545	02:25	12	15.12.1960		26.01.1961				
9	22	25	↓3	Just As Much As Ever - Nat King Cole, Orchestra Conducted by Dave Cavanaugh	Capitol 7": 45-CL 15163	02:15	18	10.11.1960		24.11.1960				
23	33	26	↑7	Only The Lonely (Know How I Feel) - Roy Orbison	London 7": 45-HLU 9149	02:27	1	28.07.1960	⊙	20.10.1960				
14	25	27	↓2	Milord - Edith Piaf, Orchestra directed by Robert Chauvigny	Columbia 7": 45-DC 754	03:08	24	12.05.1960		22.12.1960				
7	27	28	↓1	Even More Party Pops - Russ Conway, Accompaniment Directed by Geoff Love	Columbia 7": 45-DB 4535	02:31	27	24.11.1960		29.12.1960				
3	26	29	↓3	Little Girl - Marty Wilde	Philips 7": PB 1078	01:40	16	22.12.1960		19.01.1961				
5	31	30	↑1	Buona Sera - Mr. Acker Bilk and his Paramount Jazz Band	Columbia 7": 45-DB 4544	03:37	7	08.12.1960		16.02.1961				
9	45	31	↑14	Kommotion - Duane Eddy	London 7": 45-HLW 9225	02:51	13	10.11.1960		24.11.1960				
9	30	32	↓2	Kickin' Up The Leaves - Mark Wynter	Decca 7": 45-F 11279	02:02	24	10.11.1960		01.12.1960				
3	34	33	↑1	Strawberry Blonde (The Band Rocked On) - Frank D'Rone, Orchestra Conducted by David Carroll	Mercury 7": 45-AMT 1123	01:43	24	22.12.1960		12.01.1961				
5	29	34	↓5	Georgia On My Mind - Ray Charles, Orchestra & Chorus Conducted by Ralph Burns	HMV 7": 45-POP 792	03:38	24	01.12.1960		15.12.1960				
1	NE	35		Till - Tony Bennett, Music by De Vol	Philips 7": PB 1079	02:55	35	05.01.1961		05.01.1961				
1	NE	36		Stay - Maurice Williams & the Zodiacs	Top Rank 7": JAR 526	01:38	14	05.01.1961		26.01.1961				
2	43	37	↑6	Let's / Serenata - Sarah Vaughan with Joe Reisman's Orchestra and Chorus	Columbia 7": 45-DB 4542	02:15	37	29.12.1960		05.01.1961				
2	RE	38		Onward Christian Soldiers - The Harry Simeone Chorale	Ember 7": EMB S118	02:40	35	22.12.1960		22.12.1960				
12	44	39	↑5	Never On Sunday (Jamais Le Dimanche) - Makadopoulos And His Greek Serenaders	Palette 7": PG 9005	02:26	36	20.10.1960		22.12.1960				
5	32	40	↓8	The Virgin Mary - Lonnie Donegan	Pye 7": 7N 15315	02:21	27	08.12.1960		22.12.1960				
3	47	41	↑6	Togetherness - Mike Preston	Decca 7": 45-F 11287	02:28	41	22.12.1960		05.01.1961				
1	NE	42		Must Be Santa - Joan Regan and Dr. Barnardo's Children with The Peter Knight Orchestra	Pye 7": 7N 15303	03:02	42	05.01.1961		05.01.1961				
3	41	43	↓2	Little White Berry - Roy Castle with Wally Stott and his Orchestra and Chorus	Philips 7": PB 1087	02:43	40	22.12.1960		22.12.1960				
18	36	44	↓8	Let's Think About Living - Bob Luman	Warner Bros. 7": 45-WB.18	02:06	6	08.09.1960		27.10.1960				
5	37	45	↓8	Black Stockings - The John Barry Seven	Columbia 7": 45-DB 4554	02:21	27	08.12.1960		12.01.1961				
5	49	46	↑3	Deep Feeling - Mike Sagar and The Cresters	HMV 7": 45-POP 819	02:00	44	08.12.1960		15.12.1960				
1	NE	47		My Girl Josephine - Fats Domino	London 7": 45-HLP 9244	02:00	32	05.01.1961		19.01.1961				
18	35	48	↓13	McDonald's Cave - The Piltdown Men	Capitol 7": 45-CL 15149	02:26	14	08.09.1960		10.11.1960				
11	48	49	↓1	Sorry Robbie - Bert Weedon	Top Rank 7": JAR 517	02:13	28	27.10.1960		24.11.1960				
12	38	50	↓12	Top Teen Baby - Garry Mills, Orchestar Conducted by Johnny Douglas	Top Rank 7": 45-JAR 500	02:12	24	20.10.1960		03.11.1960				

The Hit Log

The Hit Log lists, in order of first entry date and then entry position, every record to appear in the chart since it began. This list shows all entries that charted during the year 1961, meaning entries that first charted in prior years are also shown. The information is sorted by number in the sequence of charting records, so entries that may have charted at the end of 1961 may be shown before entries charting earlier, it all depends when the record first hit the chart. Entry position is the entry position when first charting, while both Peak Position and weeks on chart refer to the records entire chart run, sometimes across multiple years. Images are shown for almost all entries and are almost always the charting version unless this proves impossible to locate.

12 May 1960

1,186 Milord - *Edith Piaf, Orchestra directed by Robert Chauvigny (Columbia)*



Entry: 41 Peak: 24 15 wks total, 10 wks Top 40, 15 wks Top 50.

28 Jul 1960

1,261 Only The Lonely (Know How I Feel) - *Roy Orbison (London)*



Entry: 36 Peak: 1 24 wks total, 10 wks Top 10, 16 wks Top 20, 23 wks Top 40, 24 wks Top 50.

04 Aug 1960

1,267 As Long As He Needs Me - *Shirley Bassey and The Rita Williams Singers with Geoff Love and His Orchestra (Columbia)*



Entry: 40 Peak: 2 30 wks total, 14 wks Top 10, 20 wks Top 20, 26 wks Top 40, 30 wks Top 50.

08 Sep 1960

1,298 Let's Think About Living - *Bob Luman (Warner Bros.)*



Entry: 40 Peak: 6 18 wks total, 6 wks Top 10, 9 wks Top 20, 16 wks Top 40, 18 wks Top 50.

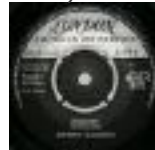
1,299 McDonald's Cave - *The Piltdown Men (Capitol)*



Entry: 45 Peak: 14 18 wks total, 6 wks Top 20, 15 wks Top 40, 18 wks Top 50.

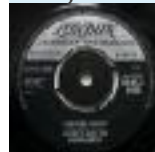
29 Sep 1960

1,314 Dreamin' - *Johnny Burnette (London)*



Entry: 41 Peak: 5 16 wks total, 5 wks Top 10, 10 wks Top 20, 15 wks Top 40, 16 wks Top 50.

1,315 Rocking Goose - *Johnny and the Hurricanes (London)*



Entry: 48 Peak: 3 20 wks total, 11 wks Top 10, 15 wks Top 20, 18 wks Top 40, 20 wks Top 50.

06 Oct 1960

1,317 My Love For You - *Johnny Mathis with Orchestra arranged and conducted by Glenn Osser (Fontana)*



Entry: 38 Peak: 9 18 wks total, 3 wks Top 10, 11 wks Top 20, 18 wks Top 40, 18 wks Top 50.

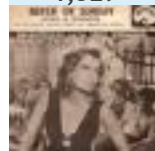
20 Oct 1960

1,328 Top Teen Baby - *Garry Mills, Orchestar Conducted by Johnny Douglas (Top Rank)*



Entry: 39 Peak: 24 12 wks total, 10 wks Top 40, 12 wks Top 50.

1,329 Never On Sunday (Jamais Le Dimanche) - *Makadopoulos And His Greek Serenaders (Palette)*



Entry: 40 Peak: 36 14 wks total, 7 wks Top 40, 14 wks Top 50.

27 Oct 1960

1,337 Mr. Custer - *Charlie Drake (Parlophone)*



Entry: 46 Peak: 12 12 wks total, 6 wks Top 20, 11 wks Top 40, 12 wks Top 50.

The Hit Log - Top 10 Entries

The Hit Log lists, in order of first entry date and then entry position, every record to appear in the Top 10 of the chart since it began. This list shows all entries that charted during the year 1961, meaning entries that first charted in prior years are also shown. The information is sorted by number in the sequence of charting records, so entries that may have charted at the end of 1961 may be shown before entries charting earlier, it all depends when the record first hit the chart. Entry position is the entry position when first charting, while both Peak Position and weeks on chart refer to the records entire chart run, sometimes across multiple years.

01 Sep 1960

566 As Long As He Needs Me - *Shirley Bassey and The Rita Williams Singers with Geoff Love and His Orchestra* (Columbia) Entry: 9 Peak: 2 30 wks total, 14 wks Top 10, 20 wks Top 20, 26 wks Top 40, 30 wks Top 50.

22 Sep 1960

571 Only The Lonely (Know How I Feel) - *Roy Orbison* (London) Entry: 5 Peak: 1 24 wks total, 10 wks Top 10, 16 wks Top 20, 23 wks Top 40, 24 wks Top 50.

20 Oct 1960

578 Let's Think About Living - *Bob Luman* (Warner Bros.) Entry: 7 Peak: 6 18 wks total, 6 wks Top 10, 9 wks Top 20, 16 wks Top 40, 18 wks Top 50.

03 Nov 1960

579 It's Now Or Never (O Sole Mio) - *Elvis Presley with The Jordanaires* (RCA) Entry: 1 Peak: 1 19 wks total, 12 wks Top 10, 15 wks Top 20, 18 wks Top 40, 19 wks Top 50.

580 Rocking Goose - *Johnny and the Hurricanes* (London) Entry: 4 Peak: 3 20 wks total, 11 wks Top 10, 15 wks Top 20, 18 wks Top 40, 20 wks Top 50.

581 Dreamin' - *Johnny Burnette* (London) Entry: 6 Peak: 5 16 wks total, 5 wks Top 10, 10 wks Top 20, 15 wks Top 40, 16 wks Top 50.

10 Nov 1960

582 My Love For You - *Johnny Mathis with Orchestra arranged and conducted by Glenn Osser* (Fontana) Entry: 9 Peak: 9 18 wks total, 3 wks Top 10, 11 wks Top 20, 18 wks Top 40, 18 wks Top 50.

17 Nov 1960

583 My Heart Has A Mind Of It's Own - *Connie Francis, Orchestra Conducted by Joe Sherman* Entry: 6 Peak: 3 15 wks total, 5 wks Top 10, 10 wks Top 20, 13 wks Top 40, 15 wks Top 50.

584 Man Of Mystery / The Stranger - *The Shadows* (Columbia) Entry: 7 Peak: 5 15 wks total, 9 wks Top 10, 10 wks Top 20, 13 wks Top 40, 15 wks Top 50.

585 Save The Last Dance For Me - *The Drifters* (London) Entry: 8 Peak: 2 18 wks total, 11 wks Top 10, 13 wks Top 20, 17 wks Top 40, 18 wks Top 50.

24 Nov 1960

586 Goodness Gracious Me! - *Peter Sellers & Sophia Loren* (Parlophone) Entry: 8 Peak: 4 14 wks total, 8 wks Top 10, 11 wks Top 20, 14 wks Top 40, 14 wks Top 50.

01 Dec 1960

587 Little Donkey - *Nina and Frederik With The Jørn Grauengaard Quintet* (Columbia) Entry: 8 Peak: 3 10 wks total, 6 wks Top 10, 8 wks Top 20, 9 wks Top 40, 10 wks Top 50.

08 Dec 1960

588 I Love You - *Cliff Richard and the Shadows* (Columbia) Entry: 4 Peak: 1 16 wks total, 9 wks Top 10, 11 wks Top 20, 15 wks Top 40, 16 wks Top 50.

The Hit Log - Top 20 Entries

The Hit Log lists, in order of first entry date and then entry position, every record to appear in the Top 20 of the chart since it began. This list shows all entries that charted during the year 1961, meaning entries that first charted in prior years are also shown. The information is sorted by number in the sequence of charting records, so entries that may have charted at the end of 1961 may be shown before entries charting earlier, it all depends when the record first hit the chart. Entry position is the entry position when first charting, while both Peak Position and weeks on chart refer to the records entire chart run, sometimes across multiple years.

18 Aug 1960

921 As Long As He Needs Me - *Shirley Bassey and The Rita Williams Singers with Geoff Love and His Orchestra* (Columbia) Entry: 20 Peak: 2 30 wks total, 14 wks Top 10, 20 wks Top 20, 26 wks Top 40, 30 wks Top 50.

01 Sep 1960

925 Only The Lonely (Know How I Feel) - *Roy Orbison* (London) Entry: 15 Peak: 1 24 wks total, 10 wks Top 10, 16 wks Top 20, 23 wks Top 40, 24 wks Top 50.

06 Oct 1960

936 Let's Think About Living - *Bob Luman* (Warner Bros.) Entry: 12 Peak: 6 18 wks total, 6 wks Top 10, 9 wks Top 20, 16 wks Top 40, 18 wks Top 50.

13 Oct 1960

939 Rocking Goose - *Johnny and the Hurricanes* (London) Entry: 20 Peak: 3 20 wks total, 11 wks Top 10, 15 wks Top 20, 18 wks Top 40, 20 wks Top 50.

20 Oct 1960

940 Dreamin' - *Johnny Burnette* (London) Entry: 16 Peak: 5 16 wks total, 5 wks Top 10, 10 wks Top 20, 15 wks Top 40, 16 wks Top 50.

941 McDonald's Cave - *The Piltdown Men* (Capitol) Entry: 19 Peak: 14 18 wks total, 6 wks Top 20, 15 wks Top 40, 18 wks Top 50.

942 My Love For You - *Johnny Mathis with Orchestra arranged and conducted by Glenn Osser* (Fontana) Entry: 20 Peak: 9 18 wks total, 3 wks Top 10, 11 wks Top 20, 18 wks Top 40, 18 wks Top 50.

03 Nov 1960

944 It's Now Or Never (O Sole Mio) - *Elvis Presley with The Jordanaires* (RCA) Entry: 1 Peak: 1 19 wks total, 12 wks Top 10, 15 wks Top 20, 18 wks Top 40, 19 wks Top 50.

10 Nov 1960

946 My Heart Has A Mind Of It's Own - *Connie Francis, Orchestra Conducted by Joe Sherman* Entry: 12 Peak: 3 15 wks total, 5 wks Top 10, 10 wks Top 20, 13 wks Top 40, 15 wks Top 50.

947 Mr. Custer - *Charlie Drake* (Parlophone) Entry: 17 Peak: 12 12 wks total, 6 wks Top 20, 11 wks Top 40, 12 wks Top 50.

17 Nov 1960

948 Man Of Mystery / The Stranger - *The Shadows* (Columbia) Entry: 7 Peak: 5 15 wks total, 9 wks Top 10, 10 wks Top 20, 13 wks Top 40, 15 wks Top 50.

949 Save The Last Dance For Me - *The Drifters* (London) Entry: 8 Peak: 2 18 wks total, 11 wks Top 10, 13 wks Top 20, 17 wks Top 40, 18 wks Top 50.

950 Kommotion - *Duane Eddy* (London) Entry: 16 Peak: 13 10 wks total, 4 wks Top 20, 8 wks Top 40, 10 wks Top 50.

951 Goodness Gracious Me! - *Peter Sellers & Sophia Loren* (Parlophone) Entry: 18 Peak: 4 14 wks total, 8 wks Top 10, 11 wks Top 20, 14 wks Top 40, 14 wks Top 50.

952 Blue Angel - *Roy Orbison* (London) Entry: 20 Peak: 11 16 wks total, 10 wks Top 20, 14 wks Top 40, 16 wks Top 50.

The Hit Log - Top 40 Entries

The Hit Log lists, in order of first entry date and then entry position, every record to appear in the Top 40 of the chart since it began. This list shows all entries that charted during the year 1961, meaning entries that first charted in prior years are also shown. The information is sorted by number in the sequence of charting records, so entries that may have charted at the end of 1961 may be shown before entries charting earlier, it all depends when the record first hit the chart. Entry position is the entry position when first charting, while both Peak Position and weeks on chart refer to the records entire chart run, sometimes across multiple years.

28 Jul 1960

1,221 Only The Lonely (Know How I Feel) - *Roy Orbison* (London) Entry: 36 Peak: 1 24 wks total, 10 wks Top 10, 16 wks Top 20, 23 wks Top 40, 24 wks Top 50.

04 Aug 1960

1,224 As Long As He Needs Me - *Shirley Bassey and The Rita Williams Singers with Geoff Love and His Orchestra* (Columbia) Entry: 40 Peak: 2 30 wks total, 14 wks Top 10, 20 wks Top 20, 26 wks Top 40, 30 wks Top 50.

08 Sep 1960

1,246 Let's Think About Living - *Bob Luman* (Warner Bros.) Entry: 40 Peak: 6 18 wks total, 6 wks Top 10, 9 wks Top 20, 16 wks Top 40, 18 wks Top 50.

22 Sep 1960

1,253 McDonald's Cave - *The Pittdown Men* (Capitol) Entry: 40 Peak: 14 18 wks total, 6 wks Top 20, 15 wks Top 40, 18 wks Top 50.

06 Oct 1960

1,258 Rocking Goose - *Johnny and the Hurricanes* (London) Entry: 25 Peak: 3 20 wks total, 11 wks Top 10, 15 wks Top 20, 18 wks Top 40, 20 wks Top 50.

1,259 Dreamin' - *Johnny Burnette* (London) Entry: 30 Peak: 5 16 wks total, 5 wks Top 10, 10 wks Top 20, 15 wks Top 40, 16 wks Top 50.

1,260 My Love For You - *Johnny Mathis with Orchestra arranged and conducted by Glenn Osser* (Fontana) Entry: 38 Peak: 9 18 wks total, 3 wks Top 10, 11 wks Top 20, 18 wks Top 40, 18 wks Top 50.

20 Oct 1960

1,268 Top Teen Baby - *Garry Mills, Orchestar Conducted by Johnny Douglas* (Top Rank) Entry: 39 Peak: 24 12 wks total, 10 wks Top 40, 12 wks Top 50.

1,269 Never On Sunday (Jamais Le Dimanche) - *Makadopoulos And His Greek Serenaders* (Palette) Entry: 40 Peak: 36 14 wks total, 7 wks Top 40, 14 wks Top 50.

03 Nov 1960

1,274 It's Now Or Never (O Sole Mio) - *Elvis Presley with The Jordanaires* (RCA) Entry: 1 Peak: 1 19 wks total, 12 wks Top 10, 15 wks Top 20, 18 wks Top 40, 19 wks Top 50.

1,275 Mr. Custer - *Charlie Drake* (Parlophone) Entry: 25 Peak: 12 12 wks total, 6 wks Top 20, 11 wks Top 40, 12 wks Top 50.

1,276 My Heart Has A Mind Of It's Own - *Connie Francis, Orchestra Conducted by Joe Sherman* Entry: 28 Peak: 3 15 wks total, 5 wks Top 10, 10 wks Top 20, 13 wks Top 40, 15 wks Top 50.

1,277 Blue Angel - *Roy Orbison* (London) Entry: 29 Peak: 11 16 wks total, 10 wks Top 20, 14 wks Top 40, 16 wks Top 50.

1,278 Milord - *Edith Piaf, Orchestra directed by Robert Chauvigny* (Columbia) Entry: 35 Peak: 24 15 wks total, 10 wks Top 40, 15 wks Top 50.

1,279 Save The Last Dance For Me - *The Drifters* (London) Entry: 39 Peak: 2 18 wks total, 11 wks Top 10, 13 wks Top 20, 17 wks Top 40, 18 wks Top 50.

1,280 Sorry Robbie - *Bert Weedon* (Top Rank) Entry: 40 Peak: 28 11 wks total, 6 wks Top 40, 11 wks Top 50.

Disc Awards - 1961

This shows the Disc Awards that were awarded for the year 1961, arranged by date of award. Chart date refers to either the main Singles, Albums or EP charts. It should be noted that the chart data refers to the version charting at the time the award was made. Chart data combines all re-entries into a single entry. Awards are shown as follows: ☉ = Silver Award; * = Gold Award.

07 January 1961

☉ Silver

24.11.1960	3	11	Strawberry Fair - <i>Anthony Newley</i> Decca 7": 45-F 11295 (Nolly Clapton / Traditional) A Boy Without A Girl	Single	02:21
01.12.1960	1	15	Poetry In Motion - <i>Johnny Tillotson</i> London 7": 45-HLA 9231 (Mike Anthony / Paul Kaufman) Princess, Princess	Single	02:30

14 January 1961

☉ Silver

03.11.1960	3	15	My Heart Has A Mind Of It's Own - <i>Connie Francis, Orchestra Conducted by Joe Sherman</i> MGM 7": 45-MGM-1100 (Howard Greenfield / Jack Keller) Malagueña (Connie Francis with Geoff Love and his Orchestra)	Single	02:33
10.11.1960	4	14	Goodness Gracious Me! - <i>Peter Sellers & Sophia Loren</i> Parlophone 7": 45-R 4702 (Dave Lee / Herbert Kretzmer) Grandpa's Grave (Peter Sellers)	Single	03:01
17.11.1960	4	11	Lonely Pup (In A Christmas Shop) - <i>Adam Faith with the children and accomp. Directed by John Barry</i> Parlophone 7": 45-R 4708 (Arthur Alexander) Greenfinger	Single	01:47

21 January 1961

☉ Silver

10.11.1960	5	15	Man Of Mystery / The Stranger - <i>The Shadows</i> Columbia 7": 45-DB 4530 (Michael Carr / Bill Crompton / Morgan Jones) The Stranger	Single	01:58
------------	---	----	---	--------	-------

11 February 1961

☉ Silver

26.01.1961	1	15	Sailor - <i>Petula Clark, Peter Knight Orchestra and Chorus</i> Pye 7": 7N 15324 (David West / Fini Busch / Norman Newell / Werner Scharfenberger) My Heart (Amor)	Single	02:57
------------	---	----	--	--------	-------

18 February 1961

☉ Silver

09.02.1961	1	16	Walk Right Back / Ebony Eyes - <i>The Everly Brothers</i> Warner Bros. 7": 45-WB.33 (John D. Loudermilk / Sonny Curtis) Ebony Eyes	Single	02:19
------------	---	----	--	--------	-------

Title Listing For 1961

This is an alphabetical listing of titles, sorted by their first letters. Any title starting with "A" or "The" is listed under the second word. The peak and the day/month of first chart entry of the title is shown. Where the same title charted in the same year, the entries are sorted by the highest position reached by that track. In the unlikely event of two or more records reaching the same position, they are listed alphabetically by artist, although the artist is not sorted alphabetically.

Peak Entry Title (Artist)

A

- 9 23/02 African Waltz (Johnny Dankworth And His Orchestra)
- 13 24/08 Ain't Gonna Wash For A Week (The Brook Brothers)
- 43 08/06 Ambush (The Outlaws)
- 38 05/10 Amor, Amor (Ben E. King)
- 6 16/03 And The Heavens Cried (Anthony Newley)
- 1 19/01 Are You Lonesome Tonight? (Elvis Presley with The Jordanaires)
- 2 23/02 Are You Sure (The Allisons)
- 21 05/01 As Long As He Needs Me (Shirley Bassey and The Rita Williams Singers with Geoff Love and His Orchestra)
- 35 13/04 Asia Minor (Kokomo, His Piano And Orchestra)

B

- 12 06/07 Baby I Don't Care (Buddy Holly)
- 30 10/08 Baby Sittin' (Bobby Angelo and The Tuxedos)
- 17 02/03 Baby Sittin' Boogie (Buzz Clifford, Orchestra conducted by Tony Piano)
- 30 14/12 Baby's First Christmas (Connie Francis with Orchestra Conducted by Don Costa)
- 16 16/11 Bambino (The Springfields)
- 22 12/01 Bangers and Mash (Peter Sellers & Sophia Loren)
- 28 01/06 The Battle's O'er (Andy Stewart with The Michael Sammes Singers, Orchestra conducted by Bernard Ebbinghouse)
- 36 01/06 The Bells Of Avignon (Max Bygraves with the Corona Children, Chorus and Orchestra directed by Eric Rogers)
- 2 26/10 Big Bad John (Jimmy Dean)
- 43 04/05 Billy Boy (Dick Charlesworth and His City Gents)
- 44 16/02 Black Bear (Frank Cordell and His Orchestra)
- 27 05/01 Black Stockings (The John Barry Seven)
- 5 05/10 Bless You (Tony Orlando, Arranged and Conducted by Carol King)
- 14 05/01 Blue Angel (Roy Orbison)
- 1 13/04 Blue Moon (The Marcels)
- 30 13/07 The Boll Weevil Song (Brook Benton, Orchestra conducted by Belford Hendricks)
- 31 31/08 Breakaway (The Springfields)
- 12 15/06 Breakin' In A Brand New Broken Heart (Connie Francis, Orchestra conducted by Stan Applebaum)
- 7 05/01 Buona Sera (Mr. Acker Bilk and his Paramount Jazz Band)
- 3 04/05 But I Do (Clarence Frogman Henry)

Peak Entry Title (Artist)

C

- 8 02/02 Calendar Girl (Neil Sedaka With Stan Applebaum And His Orchestra)
- 36 12/01 Can't You Hear My Heart (Danny Rivers)
- 42 05/10 Caravan (Part 1) (Duane Eddy)
- 40 23/02 C'est Si Bon (It's So Good) (Conway Twitty)
- 26 12/01 Chariot (Rhet Stoller)
- 22 07/12 The Charleston (The Temperance Seven)
- 39 23/11 The Coffee Song (Frank Sinatra, Orchestra conducted by Johnny Mandel)
- 41 19/01 Corrine, Corrina (Ray Peterson)
- 4 05/01 Counting Teardrops (Emile Ford And The Checkmates)
- 37 20/04 Cowboy Jimmy Joe (Alma Cogan with Geoff Love & His Orchestra and The Rita Williams Singers)
- 25 21/09 Cryin' (Roy Orbison)
- 7 27/07 Cupid (Sam Cooke, Orchestra Conducted by Rene Hall)

D

- 46 05/01 Deep Feeling (Mike Sagar and The Cresters)
- 21 12/01 Doll House (The King Brothers and The Rita Williams Singers)
- 50 14/09 Don't Bet Money Honey (Linda Scott with the Hutch Davie Orchestra)
- 17 07/12 Don't Bring Lulu (Dorothy Provine)
- 40 29/06 Don't Jump Of The Roof Dad (Tommy Cooper)
- 3 23/03 Don't Treat Me Like A Child (Helen Shapiro)
- 40 27/04 Don't Worry (Billy Fury and The Four Kestrels)
- 12 20/07 Don't You Know It? (Adam Faith)
- 27 09/03 Dream Girl (Mark Wynter)
- 22 05/01 Dreamin' (Johnny Burnette)
- 30 14/09 Drivin' Home (Duane Eddy)
- 22 20/07 Dum Dum (Brenda Lee with Chorus and Orchestra Directed by Owen Bradley)
- 12 27/04 Easy Going Me (Adam Faith)
- 45 06/04 Emotions (Brenda Lee)

E

Peak Entry Title (Artist)

- 37 23/03 Entry Of The Gladiators (Nero and The Gladiators)
- 28 05/01 Even More Party Pops (Russ Conway, Accompaniment Directed by Geoff Love)
- 23 16/11 Everlovin' (Ricky Nelson)
- 32 08/06 Exclusively Yours (Mark Wynter)
- 25 16/03 Exodus - Main Theme (Semprini (Piano) with Orchestra arranged and conducted by Frank Cordell)

F

- 6 09/02 F.B.I. (The Shadows)
- 27 02/02 First Taste Of Love (Ben E. King)
- 38 16/11 Fool No. 1 (Brenda Lee)
- 50 16/02 Fools Rush In (Where Angels Fear To Tread) (Brook Benton, Orchestra conducted by Belford Hendricks)
- 3 11/05 The Frightened City (The Shadows)

G

- 12 16/02 Gather In The Mushrooms (Benny Hill)
- 4 30/03 Gee Whiz It's You (Cliff Richard and the Shadows)
- 34 05/01 Georgia On My Mind (Ray Charles, Orchestra & Chorus Conducted by Ralph Burns)
- 10 14/09 Get Lost (Eden Kane)
- 35 02/02 Ginchy (Bert Weedon)
- 3 22/06 A Girl Like You (Cliff Richard and the Shadows)
- 37 10/08 Girls (Johnny Burnette)
- 44 28/09 Gonna Build A Mountain (Matt Monro)
- 42 23/03 Good Time Baby (Bobby Rydell)
- 34 14/12 Goodbye Cruel World (James Darren)
- 6 05/01 Goodness Gracious Me! (Peter Sellers & Sophia Loren)
- 18 09/03 Goodnight Mrs. Flintstone (The Pittdown Men)
- 15 28/09 Granada (Frank Sinatra with Billy May and his Orchestra)
- 49 04/05 The Great Snow Man (Bob Luman)
- 50 11/05 Gunslinger (Frankie Laine, Orchestra and Chorus conducted by Johnny Williams)
- 16 05/01 Gurney Slade (Max Harris with His Group)
- 49 23/02 Gypsy Beat (The Packabests)
- 41 07/12 The Gypsy Rover (The Whistling Gypsy) (The Highwaymen)

NME 1961 Singles Charts

This decade will showcase various other charts from the 1960's, allowing the reader to see how they all stack up against each other. This section showcases the NME chart, a Top 30 with no weeks where the chart was not compiled in 1961.

Number 1 List for The NME Singles Charts for 1961.

Entry Date: 01.09 1 week at the top.

Number: 119 (1)

Title: You Don't Know
Artist: Helen Shapiro



Entry Date: 29.09 1 week at the top.

Number: 120 (1)

Title: Johnny Remember Me
Artist: John Leyton



Entry Date: 22.09 1 week at the top.

Number: 121

Title: Wild In The Country
Artist: Elvis Presley with The Jordanaires



Entry Date: 06.10 1 week at the top.

Number: 122

Title: Michael
Artist: The Highwaymen



The Top 500 Most Weeks On Chart Artists

The listing here is the Top 500 Artists based on weeks in the chart (defined as the full charts as listed in the database), sorted by total weeks, then by most recent exit date, with a more recent exit ranked higher than an older one, and finally alphabetically by artist. Rank in the previous year, 1960, is shown as is the additional weeks currently charting artists have added over last year, and any change in peak position.

Rank		Peak	Wks	Artist	Entry Date	Exit Date	Changes In	
1960	1961						Weeks	Peak
2	1	↑ 1	1	426 Elvis Presley	11.05.1956	29.12.1961	71	
1	2	↓ 1	1	369 Frank Cordell	14.11.1952	10.11.1961	4	
8	3	↑ 5	1	284 Geoff Love	28.01.1955	29.12.1961	71	
3	4	↓ 1	1	284 Wally Stott	15.05.1953	03.03.1961	6	
4	5	↓ 1	1	278 Frankie Laine	14.11.1952	04.03.1960		
13	6	↑ 7	1	274 The Shadows	12.09.1958	22.12.1961	92	
6	7	↓ 1	1	266 Lonnie Donegan	06.01.1956	13.10.1961	19	
5	8	↓ 3	1	254 Nelson Riddle	14.11.1952	26.05.1961	4	
7	9	↓ 2	1	252 Pat Boone	18.11.1955	29.12.1961	13	
10	10	↔	1	233 The Jordanaires	10.05.1957	03.11.1961	40	
24	11	↑ 13	1	204 Cliff Richard	12.09.1958	29.12.1961	52	
18	12	↑ 6	1	204 The Everly Brothers	12.07.1957	27.10.1961	40	
9	13	↓ 4	1	202 Perry Como	16.01.1953	06.05.1960		
15	14	↑ 1	1	199 Connie Francis	04.04.1958	22.12.1961	33	
11	15	↓ 4	1	189 David Whitfield	02.10.1953	15.08.1958		
12	16	↓ 4	1	189 Hugo Winterhalter	02.01.1953	08.03.1957		
26	17	↑ 9	1	173 Norrie Paramor	19.12.1952	29.12.1961	25	
14	18	↓ 4	1	173 Bill Haley	17.12.1954	29.03.1957		
16	19	↓ 3	1	166 Johnnie Ray	14.11.1952	05.02.1960		
17	20	↓ 3	1	166 Billy Vaughn	27.01.1956	05.12.1958		
20	21	↓ 1	2	165 Nat "King" Cole	14.11.1952	08.12.1961	3	
19	22	↓ 3	1	163 Guy Mitchell	14.11.1952	04.03.1960		
21	23	↓ 2	1	157 Paul Weston	14.11.1952	24.02.1956		
23	24	↓ 1	1	156 The Ray Charles Singers	30.12.1955	06.05.1960		
22	25	↓ 3	1	156 Mitchell Ayres	30.12.1955	06.05.1960		
25	26	↓ 1	1	153 Don Costa	09.08.1957	22.12.1961	2	
27	27	↔	1	148 Ray Conniff	25.11.1955	25.10.1957		
30	28	↑ 2	1	145 Frank Sinatra	09.07.1954	03.11.1961	10	
31	29	↑ 2	1	141 Frankie Vaughan	29.01.1954	29.12.1961	8	
29	30	↓ 1	1	140 Tommy Steele	26.10.1956	01.09.1961	3	
28	31	↓ 3	1	139 Ray Martin	14.11.1952	07.12.1956		
35	32	↑ 3	1	133 Russ Conway	29.11.1957	29.12.1961	16	
32	33	↓ 1	1	128 Mitch Miller	14.11.1952	30.12.1955		
33	34	↓ 1	1	124 Doris Day	14.11.1952	26.09.1958		
34	35	↓ 1	1	119 Dean Martin	18.09.1953	28.11.1958		
36	36	↔	1	117 Winifred Atwell	12.12.1952	08.01.1960		
37	37	↔	3	115 Roland Shaw	22.04.1955	07.02.1958		
64	38	↑ 26	1	114 Adam Faith	20.11.1959	22.12.1961	39	
39	39	↔	1	114 Ronnie Hilton	26.11.1954	10.11.1961	1	
38	40	↓ 2	1	114 Ruby Murray	03.12.1954	09.10.1959		
40	41	↓ 1	1	112 Buddy Cole	14.11.1952	30.08.1957		
73	42	↑ 31	1	110 Shirley Bassey	15.02.1957	29.12.1961	39	
41	43	↓ 2	1	108 Jack Pleis	02.07.1954	27.02.1959		
80	44	↑ 36	1	107 Rita Williams	09.08.1957	29.12.1961	42	2
59	45	↑ 14	2	106 Duane Eddy	05.09.1958	22.09.1961	25	
42	46	↓ 4	3	106 Malcolm Vaughan	01.07.1955	12.06.1959		
43	47	↓ 4	1	105 Eddie Fisher	02.01.1953	08.03.1957		
48	48	↔	4	104 Tony Osborne	25.11.1955	06.10.1961	5	
44	49	↓ 5	1	102 Alma Cogan	19.03.1954	19.08.1960		
45	50	↓ 5	1	100 Percy Faith	14.11.1952	03.06.1960		
46	51	↓ 5	1	100 Paul Anka	09.08.1957	26.02.1960		
47	52	↓ 5	1	100 Mantovani	19.12.1952	28.02.1958		
50	53	↓ 3	2	99 Max Bygraves	14.11.1952	16.06.1961	1	
49	54	↓ 5	1	98 Dick Jacobs	01.04.1955	17.07.1959		
63	55	↑ 8	1	97 Anthony Newley	01.05.1959	08.09.1961	21	
51	56	↓ 5	2	97 Little Richard	14.12.1956	03.07.1959		
52	57	↓ 5	1	95 Carl Fischer	14.11.1952	03.12.1954		
72	58	↑ 14	3	95 Ricky Nelson	21.02.1958	24.11.1961	23	
81	59	↑ 22	1	93 Bobby Darin	01.08.1958	29.12.1961	29	

The NME Singles Charts

1961

Entry	Date of			Weeks on			Rank	Title	Peak	Artist	Length	Label	Cat Number
	Peak	Exit	CH	75	40	10							
1													
04.08	25.08	20.10	12	12	12	9	5	1	Johnny Remember Me	John Leyton	02:39	Top Rank	7": JAR 577
20.01	27.01	07.04	12	12	12	8	5	2	Are You Lonesome Tonight?	Elvis Presley with The Jordanaires	03:06	RCA	7": 45-RCA 1216
28.04	19.05	01.09	19	19	19	14	4	3	Runaway	Del Shannon	02:20	London	7": 45-HLX 9317
07.07	04.08	27.10	17	17	17	11	4	4	You Don't Know	Helen Shapiro	02:41	Columbia	7": 45-DB 4670
29.09	13.10	29.12	14	14	14	11	4	5	Walkin' Back To Happiness	Helen Shapiro with Accompaniment designed by Norrie Paramor	02:30	Columbia	7": 45-DB 4715
26.05	26.05	18.08	13	13	13	8	4	6	Surrender (Torna a Surriento)	Elvis Presley with The Jordanaires	01:51	RCA	7": 45-RCA 1227
10.11	01.12	29.12	8	8	8	7	4	7	Tower Of Strength	Frankie Vaughan	02:09	Philips	7": PB 1195
10.03	24.03	16.06	15	15	15	11	3	8	Wooden Heart	Elvis Presley	01:58	RCA	7": 45-RCA-1226
10.02	03.03	05.05	13	13	13	10	3	9	Walk Right Back	The Everly Brothers	02:19	Warner Bros.	7": 45-WB.33
03.11	10.11	29.12	9	9	9	7	3	10	(Marie's The Name) His Latest Flame	Elvis Presley	02:06	RCA	7": 45-RCA-1258
06.01	06.01	24.02	8	8	8	6	3	11	Poetry In Motion	Johnny Tillotson	02:30	London	7": 45-HLA 9231
02.06	21.07	06.10	19	19	19	11	2	12	Well I Ask You	Eden Kane	02:17	Decca	7": 45-F 11353
24.02	07.04	19.05	13	13	13	9	2	13	Are You Sure	The Allisons	02:04	Fontana	7": H 294
07.04	05.05	23.06	12	12	12	7	2	14	Blue Moon	The Marcells	02:15	Pye International	7": 7N 25073
27.10	01.12	29.12	10	10	10	9	1	15	Take Good Care Of My Baby	Bobby Vee	02:27	London	7": 45-HLG 9438
31.03	28.04	23.06	13	13	13	8	1	16	You're Driving Me Crazy	The Temperance Seven	03:59	Parlophone	7": 45-R 4757
16.06	14.07	08.09	13	13	13	8	1	17	Temptation	The Everly Brothers	02:08	Warner Bros.	7": 45-WB.42
08.09	06.10	10.11	10	10	10	7	1	18	Michael	The Highwaymen	02:45	HMV	7": 45-POP 910
03.11	29.12	29.12	9	9	9	7	1	19	Moon River	Danny Williams with Geoff Love and His Orchestra and The Rita Williams Singers	02:40	HMV	7": 45-POP 932
08.09	22.09	03.11	9	9	9	6	1	20	Wild In The Country	Elvis Presley with The Jordanaires	01:53	RCA	7": 45-RCA-1244

2

27.01	03.02	07.04	11	11	11	8	5	21	Sailor	Petula Clark, Peter Knight Orchestra and Chorus	02:57	Pye	7": 7N 15324
06.10	13.10	24.11	8	8	8	4	2	22	Wild Wind	John Leyton	02:13	Top Rank	7": JAR 585
03.03	17.03	05.05	10	10	10	7	1	23	Theme For A Dream	Cliff Richard and the Shadows	02:07	Columbia	7": 45-DB 4593
20.10	27.10	29.12	11	11	11	6	1	24	When The Girl In Your Arms Is The Girl In Your Heart	Cliff Richard With Norrie Paramor And His Orchestra	02:23	Columbia	7": 45-DB 4716
06.01	13.01	24.02	8	8	8	5	1	25	I Love You	Cliff Richard and the Shadows	02:04	Columbia	7": 45-DB 4547
06.01	06.01	03.02	5	5	5	4	1	26	Save The Last Dance For Me	The Drifters	02:30	London	7": 45-HLK 9201
01.12	29.12	29.12	5	5	5	3	1	27	Stranger On The Shore	Mr. Acker Bilk with the Leon Young String Chorale	02:57	Columbia	7": 45-DB 4750

3

12.05	02.06	25.08	16	16	16	8	2	28	The Frightened City	The Shadows	02:20	Columbia	7": 45-DB 4637
26.05	07.07	15.09	17	17	17	7	2	29	Hello Mary Lou	Ricky Nelson	02:21	London	7": 45-HLP 9347
08.09	15.09	17.11	11	11	11	7	2	30	Kon - Tiki	The Shadows	01:54	Columbia	7": 45-DB 4698
28.04	12.05	23.06	9	9	9	6	2	31	On The Rebound	Floyd Cramer	02:05	RCA	7": 45-RCA 1231
27.01	10.02	17.03	8	8	8	5	2	32	Rubber Ball	Bobby Vee	02:17	London	7": 45-HLG 9255
16.06	30.06	08.09	13	13	13	10	1	33	Pasadena	The Temperance Seven	03:05	Parlophone	7": 45-R 4781
05.05	16.06	18.08	16	16	16	9	1	34	But I Do	Clarence 'Frogman' Henry	02:18	Pye International	7": 7N 25078
10.02	03.03	28.04	12	12	12	8	1	35	Will You Love Me Tomorrow	The Shirelles conducted by Luther Dixon	02:41	Top Rank	7": JAR 540
04.08	01.09	20.10	12	12	12	7	1	36	Reach For The Stars	Shirley Bassey with Geoff Love And His Orchestra	02:50	Columbia	7": 45-DB 4685
17.03	21.04	19.05	10	10	10	7	1	37	Lazy River	Bobby Darin	02:30	London	7": 45-HLK 9303
27.10	17.11	29.12	10	10	10	6	1	38	Big Bad John	Jimmy Dean	02:57	Philips	7": PB 1187
06.01	27.01	03.03	9	9	9	6	1	39	Portrait Of My Love	Matt Monro	02:46	Parlophone	7": 45-R 4714
08.09	13.10	24.11	12	12	12	5	1	40	You'll Answer To Me	Cleo Laine	02:35	Fontana	7": H 326

4

23.06	30.06	15.09	13	13	13	9	2	41	A Girl Like You	Cliff Richard and the Shadows	02:33	Columbia	7": 45-DB 4667
-------	-------	-------	----	----	----	---	---	----	-----------------	-------------------------------	-------	----------	----------------

The NME Singles Charts

Listing, sorted alphabetically by artist, every record to chart between 6 January 1961 and 29 December 1961

Chart History For The NME Singles Charts Between 6 January 1961 and 29 December 1961

Entry Peak Weeks on chart, Title (Number 1 Number) (Awards symbols, if any for this record in this period) (*Composer*) *Full artist credit (if different)* B-Side (Or EP/Album track listing if any charted on this chart) Label (Catalogue Number) Duration. Notes are presented below the title for some entries. Entries are sorted by artist, then by entry date and finally, in the event of ties, by peak position and finally weeks on chart. All re-entries are shown as separate entries, but track listings of any albums or EP's which re-entered the chart are not shown for their re-entries. BPI Awards are shown after the weeks on chart, if appropriate, as follows: ♦ = Silver Award; * = Gold Award, ◆ = Platinum Award (with following numbers to denote multi-platinum levels). Disc Awards are shown as ⊙ for a Silver Award (250,000 sales) and * for a Gold Award (1 million sales). Awards are only shown if awarded prior to the final chart date of this book.

A

The Allisons

Entry: **24.02.1961** Hits: **2** Peak: **1** Weeks: **15**

24.02.1961	1	13	⊙	Are You Sure (N1 #112) (<i>Bob Allison / John Allison</i>)	There's One Thing More	Fontana 7": H 294	02:04
12.05.1961	25	2		Words (<i>Bobby Day / John Alford</i>)	Blue Tears	Fontana 7": H 304	02:14

Stan Applebaum

Entry: **13.01.1961** Hits: **4** Peak: **8** Weeks: **31**

13.01.1961	12	7		Many Tears Ago (<i>Winfield Scott</i>)	<i>Connie Francis, Orchestra conducted by Stan Applebaum</i>	Senza Mama (With No One)	MGM 7": 45-MGM-1111	01:53
10.02.1961	8	9		Calendar Girl (<i>Howard Greenfield / Neil Sedaka</i>)	<i>Neil Sedaka With Stan Applebaum And His Orchestra</i>	The Same Old Fool	RCA 7": 45-RCA 1220	02:32
19.05.1961	9	8		Little Devil (<i>Howard Greenfield / Neil Sedaka</i>)	<i>Neil Sedaka With Stan Applebaum And His Orchestra</i>	I Must Be Dreaming	RCA 7": 45-RCA 1236	02:42
16.06.1961	16	7		Breakin' In A Brand New Broken Heart (<i>Howard Greenfield / Jack Keller</i>)	<i>Connie Francis, Orchestra conducted by Stan Applebaum</i>	Someone Else's Boy	MGM 7": 45-MGM-1136	02:35

Chart For The Week Ending 13 January 1961

This chart contains 30 entries with 10 falling, 10 climbing, 3 non-movers, 0 re-entries and 7 new entries. The average age of chart entries is 5.6 weeks.

8	1	1	↔	Poetry In Motion (N1 #108) - <i>Johnny Tillotson</i> London 7": 45-HLA 9231	02:30	1	25.11.1960 ☉	06.01.1961
7	3	2	↑ 1	I Love You - <i>Cliff Richard and the Shadows</i> Columbia 7": 45-DB 4547	02:04	2	02.12.1960 ☉	13.01.1961
11	2	3	↓ 1	Save The Last Dance For Me - <i>The Drifters</i> London 7": 45-HLK 9201	02:30	2	04.11.1960 ☉	25.11.1960
11	4	4	↔	It's Now Or Never (O Sole Mio) - <i>Elvis Presley with The Jordanaires</i> RCA 7": 45-RCA 1207	03:16	1	04.11.1960 *	04.11.1960
8	8	5	↑ 3	Perfidia - <i>The Ventures</i> London 7": 45-HLG 9232	02:03	5	25.11.1960	13.01.1961
4	13	6	↑ 7	Portrait Of My Love - <i>Matt Monro</i> Parlophone 7": 45-R 4714	02:46	3	23.12.1960	27.01.1961
5	12	7	↑ 5	Counting Teardrops - <i>Emile Ford And The Checkmates</i> Pye 7": 7N 15314	02:18	7	16.12.1960	13.01.1961
8	5	8	↓ 3	Lonely Pup (In A Christmas Shop) - <i>Adam Faith with the children and accomp. Directed by John Barry</i> Parlophone 7": 45-R 4708	01:47	4	25.11.1960	30.12.1960
10	7	9	↓ 2	Goodness Gracious Me! - <i>Peter Sellers & Sophia Loren</i> Parlophone 7": 45-R 4702	03:01	3	11.11.1960	25.11.1960
11	11	10	↑ 1	Blue Angel - <i>Roy Orbison</i> London 7": 45-HLU 9207	02:49	10	04.11.1960	13.01.1961
16	6	11	↓ 5	Rocking Goose - <i>Johnny and the Hurricanes</i> London 7": 45-HLX 9190	01:47	4	30.09.1960 ☉	25.11.1960
5	16	12	↑ 4	Buona Sera - <i>Mr. Acker Bilk and his Paramount Jazz Band</i> Columbia 7": 45-DB 4544	03:37	8	16.12.1960	27.01.1961
4	16	13	↑ 3	Sway - <i>Bobby Rydell</i> Columbia 7": 45-DB 4545	02:25	12	23.12.1960	20.01.1961
10	10	14	↓ 4	Man Of Mystery - <i>The Shadows</i> Columbia 7": 45-DB 4530	01:58	6	11.11.1960	02.12.1960
8	9	15	↓ 6	Strawberry Fair - <i>Anthony Newley</i> Decca 7": 45-F 11295	02:21	3	25.11.1960 ☉	02.12.1960
6	14	16	↓ 2	Little Girl - <i>Marty Wilde</i> Philips 7": PB 1078	01:40	14	09.12.1960	06.01.1961
2	19	16	↑ 3	Stay - <i>Maurice Williams & the Zodiacs</i> Top Rank 7": JAR 526	01:38	10	06.01.1961	27.01.1961
1	NE	18		Pepe - <i>Duane Eddy</i> London 7": 45-HLW 9257	01:57	4	13.01.1961	27.01.1961
4	23	18	↑ 5	Like Strangers - <i>The Everly Brothers</i> London 7": 45-HLA 9250	01:59	16	23.12.1960	20.01.1961
3	14	20	↓ 6	Strawberry Blonde (The Band Rocked On) - <i>Frank D'Rone, Orchestra Conducted by David Carroll</i> Mercury 7": 45-AMT 1123	01:43	14	30.12.1960	06.01.1961
1	NE	21		North To Alaska - <i>Johnny Horton</i> Philips 7": PB 1062	02:46	21	13.01.1961	13.01.1961
7	18	22	↓ 4	Gurney Slade - <i>Max Harris with His Group</i> Fontana 7": H 282	02:07	10	02.12.1960	09.12.1960
9	21	23	↓ 2	Little Donkey - <i>Nina and Frederik With The Jørn Grauengaard Quintet</i> Columbia 7": 45-DB 4536	03:16	5	18.11.1960 ☉	16.12.1960
2	30	23	↑ 7	Black Stockings - <i>The John Barry Seven</i> Columbia 7": 45-DB 4554	02:21	23	06.01.1961	13.01.1961
1	NE	25		Many Tears Ago - <i>Connie Francis, Orcherstra conducted by Stan Applebaum</i> MGM 7": 45-MGM-1111	01:53	12	13.01.1961	10.02.1961
1	NE	26		You're Sixteen - <i>Johnny Burnette</i> London 7": 45-HLG 9254	01:56	4	13.01.1961	10.02.1961
2	26	26	↔	Chariot - <i>Rhet Stoller</i> Decca 7": 45-F 11302	02:10	26	06.01.1961	06.01.1961
1	NE	28		Doll House - <i>The King Brothers and The Rita Williams Singers</i> Parlophone 7": 45-R 4715	02:09	15	13.01.1961	20.01.1961
1	NE	29		Bangers and Mash - <i>Peter Sellers & Sophia Loren</i> Parlophone 7": 45-R 4724	02:35	21	13.01.1961	20.01.1961
1	NE	30		Pepe - <i>Russ Conway with John Barry & His Orchestra</i> Columbia 7": 45-DB 4564	02:16	18	13.01.1961	10.02.1961

The Hit Log

The Hit Log lists, in order of first entry date and then entry position, every record to appear in the chart since it began. This list shows all entries that charted during the year 1961, meaning entries that first charted in prior years are also shown. The information is sorted by number in the sequence of charting records, so entries that may have charted at the end of 1961 may be shown before entries charting earlier, it all depends when the record first hit the chart. Entry position is the entry position when first charting, while both Peak Position and weeks on chart refer to the records entire chart run, sometimes across multiple years. Images are shown for almost all entries and are almost always the charting version unless this proves impossible to locate.

05 Aug 1960

1,205 As Long As He Needs Me - *Shirley Bassey and The Rita Williams Singers with Geoff Love and His Orchestra* (Columbia)



Entry: 23 Peak: **2** 23 wks total, 14 wks Top 10, 22 wks Top 20, 23 wks Top 40, 23 wks Top 50.

30 Sep 1960

1,232 Rocking Goose - *Johnny and the Hurricanes* (London)



Entry: 22 Peak: **4** 17 wks total, 11 wks Top 10, 15 wks Top 20, 17 wks Top 40, 17 wks Top 50.

07 Oct 1960

1,235 Dreamin' - *Johnny Burnette* (London)



Entry: 20 Peak: **3** 14 wks total, 6 wks Top 10, 12 wks Top 20, 14 wks Top 40, 14 wks Top 50.

14 Oct 1960

1,241 My Love For You - *Johnny Mathis with Orchestra arranged and conducted by Glenn Osser* (Fontana)



Entry: 25 Peak: **10** 13 wks total, 1 wk Top 10, 11 wks Top 20, 13 wks Top 40, 13 wks Top 50.

04 Nov 1960

1,251 It's Now Or Never (O Sole Mio) - *Elvis Presley with The Jordanaires* (RCA)



Entry: **1** Peak: **1** 15 wks total, 12 wks Top 10, 14 wks Top 20, 15 wks Top 40, 15 wks Top 50.

04 Nov 1960

1,252 My Heart Has A Mind Of It's Own - *Connie Francis, Orchestra Conducted by Joe Sherman* (MGM)



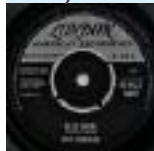
Entry: 15 Peak: **5** 10 wks total, 4 wks Top 10, 8 wks Top 20, 10 wks Top 40, 10 wks Top 50.

1,253 Save The Last Dance For Me - *The Drifters* (London)



Entry: 19 Peak: **2** 14 wks total, 12 wks Top 10, 14 wks Top 20, 14 wks Top 40, 14 wks Top 50.

1,254 Blue Angel - *Roy Orbison* (London)



Entry: 24 Peak: **10** 12 wks total, 1 wk Top 10, 8 wks Top 20, 12 wks Top 40, 12 wks Top 50.

11 Nov 1960

1,257 Goodness Gracious Me! - *Peter Sellers & Sophia Loren* (Parlophone)



Entry: 11 Peak: **3** 12 wks total, 9 wks Top 10, 12 wks Top 20, 12 wks Top 40, 12 wks Top 50.

1,258 Man Of Mystery - *The Shadows* (Columbia)



Entry: 16 Peak: **6** 12 wks total, 7 wks Top 10, 10 wks Top 20, 12 wks Top 40, 12 wks Top 50.

18 Nov 1960

1,263 Little Donkey - *Nina and Frederik With The Jørn Grauengaard Quintet* (Columbia)



Entry: 17 Peak: **5** 9 wks total, 5 wks Top 10, 7 wks Top 20, 9 wks Top 40, 9 wks Top 50.

Melody Maker 1961 Singles Charts

This decade will showcase various other charts from the 1960's, allowing the reader to see how they all stack up against each other. This section showcases the Melody Maker chart, a Top 20 with no weeks where the chart was not compiled in 1961.

The Top 500 Most Weeks On Chart Artists

The listing here is the Top 500 Artists based on weeks in the chart (defined as the full charts as listed in the database), sorted by total weeks, then by most recent exit date, with a more recent exit ranked higher than an older one, and finally alphabetically by artist. Rank in the previous year, 1960, is shown as is the additional weeks currently charting artists have added over last year, and any change in peak position.

Rank		Peak	Wks	Artist	Entry Date	Exit Date	Changes In		
1960	1961						Weeks	Peak	
1	1	↔	1	359	Elvis Presley	19.05.1956	30.12.1961	57	
6	2	↑ 4	1	227	The Shadows	04.10.1958	30.12.1961	80	
2	3	↓ 1	1	208	Lonnie Donegan	31.03.1956	28.10.1961	13	
3	4	↓ 1	1	203	The Jordanaires	11.05.1957	28.10.1961	34	
9	5	↑ 4	1	171	Cliff Richard	04.10.1958	30.12.1961	46	
7	6	↑ 1	1	165	The Everly Brothers	13.07.1957	14.10.1961	31	
4	7	↓ 3	1	163	Wally Stott	28.07.1956	04.03.1961	5	
5	8	↓ 3	1	157	Pat Boone	21.04.1956	30.12.1961	5	
13	9	↑ 4	1	150	Geoff Love	22.06.1957	30.12.1961	43	
11	10	↑ 1	1	139	Connie Francis	12.04.1958	28.10.1961	22	
8	11	↓ 3	1	128	Frank Cordell	21.04.1956	25.07.1959		
10	12	↓ 2	1	123	Billy Vaughn	07.04.1956	25.10.1958		
12	13	↓ 1	2	116	Tommy Steele	03.11.1956	20.08.1960		
14	14	↔	1	107	Don Costa	17.08.1957	02.07.1960		
20	15	↑ 5	1	95	Frankie Vaughan	10.11.1956	30.12.1961	7	
17	16	↑ 1	1	95	Mitchell Ayres	21.04.1956	23.04.1960		
16	17	↓ 1	1	95	Perry Como	21.04.1956	23.04.1960		
15	18	↓ 3	1	95	The Ray Charles Singers	21.04.1956	23.04.1960		
18	19	↓ 1	1	94	Ray Conniff	31.03.1956	28.09.1957		
29	20	↑ 9	1	92	Adam Faith	28.11.1959	30.12.1961	34	
19	21	↓ 2	3	92	Bill Haley	31.03.1956	16.03.1957		
21	22	↓ 1	1	84	The Platters	08.09.1956	19.03.1960		
26	23	↑ 3	1	82	Anthony Newley	02.05.1959	15.07.1961	16	
35	24	↑ 11	1	81	Shirley Bassey	02.03.1957	30.12.1961	27	
22	25	↓ 3	1	80	Paul Anka	17.08.1957	02.01.1960		
32	26	↑ 6	3	76	Duane Eddy	04.10.1958	22.07.1961	19	
24	27	↓ 3	1	74	Russ Conway	03.01.1959	30.12.1961	7	
23	28	↓ 5	2	71	Little Richard	16.02.1957	02.05.1959		
25	29	↓ 4	1	67	Dick Jacobs	07.04.1956	11.07.1959		
37	30	↑ 7	3	66	Ricky Nelson	16.08.1958	25.11.1961	16	
27	31	↓ 4	4	66	Ray Ellis	03.08.1957	21.05.1960		
31	32	↓ 1	1	65	Buddy Holly	14.12.1957	02.09.1961	8	
30	33	↓ 3	3	62	Marty Wilde	19.07.1958	18.02.1961	4	
45	34	↑ 11	1	60	Bobby Darin	16.08.1958	30.12.1961	14	
28	35	↓ 7	2	60	Malcolm Vaughan	17.11.1956	25.04.1959		
33	36	↓ 3	1	56	Johnnie Ray	20.10.1956	28.09.1957		
34	37	↓ 3	3	56	Nelson Riddle	31.03.1956	24.12.1960		
53	38	↑ 15	1	55	Craig Douglas	02.05.1959	09.09.1961	16	
42	39	↑ 3	2	54	Johnny and the Hurricanes	17.10.1959	29.07.1961	7	
36	40	↓ 4	1	53	Harry Belafonte	02.03.1957	03.01.1959		
84	41	↑ 43	2	53	Rita Williams	04.01.1958	30.12.1961	28	
82	42	↑ 40	2	53	Petula Clark	17.08.1957	30.12.1961	27	5
83	43	↑ 40	1	51	Norrie Paramor	07.04.1956	30.12.1961	25	11
38	44	↓ 6	1	49	Guy Mitchell	08.12.1956	27.02.1960		
39	45	↓ 6	1	49	Joe Lipman	12.04.1958	24.01.1959		
40	46	↓ 6	3	48	Tony Osborne	12.05.1956	29.10.1960		
41	47	↓ 6	1	47	Archie Bleyer	14.04.1956	27.09.1958		
43	48	↓ 5	2	47	Roland Shaw	31.03.1956	23.03.1957		
65	49	↑ 16	3	47	Neil Sedaka	02.05.1959	08.07.1961	16	
44	50	↓ 6	1	46	Percy Faith	15.09.1956	04.06.1960		
46	51	↓ 5	4	46	Johnny Mathis	27.09.1958	31.12.1960		
47	52	↓ 5	2	45	Max Bygraves	09.06.1956	07.05.1960		
58	53	↑ 5	4	44	John Barry	05.03.1960	18.02.1961	8	
54	54	↔	3	43	Frank Sinatra	31.03.1956	21.10.1961	4	
48	55	↓ 7	1	42	Ronnie Hilton	21.04.1956	26.04.1958		
49	56	↓ 7	1	41	Michael Holliday	14.04.1956	05.03.1960		
50	57	↓ 7	1	41	The Crickets	28.09.1957	06.09.1958		
60	58	↑ 2	1	40	Emile Ford	31.10.1959	18.02.1961	7	
51	59	↓ 8	1	40	Frankie Laine	15.09.1956	20.02.1960		

Chart For The Week Ending 7 January 1961										This chart contains 20 entries with 11 falling, 4 climbing, 1 non-mover, 0 re-entries and 4 new entries. The average age of chart entries is 7 weeks.				
6	6	1	↑5	Poetry In Motion (N1 #62) - Johnny Tillotson	London 7": 45-HLA 9231	02:30	1	03.12.1960	⊙	07.01.1961				
6	1	2	↓1	I Love You - Cliff Richard and the Shadows	Columbia 7": 45-DB 4547	02:04	1	03.12.1960	⊙	31.12.1960				
10	2	3	↓1	It's Now Or Never (O Sole Mio) - Elvis Presley with The Jordanaires	RCA 7": 45-RCA 1207	03:16	1	05.11.1960	*	05.11.1960				
10	3	4	↓1	Save The Last Dance For Me - The Drifters	London 7": 45-HLK 9201	02:30	2	05.11.1960	⊙	03.12.1960				
6	4	5	↓1	Lonely Pup (In A Christmas Shop) - Adam Faith with the children and accomp. Directed by John Barry	Parlophone 7": 45-R 4708	01:47	4	03.12.1960		31.12.1960				
7	5	6	↓1	Little Donkey - Nina and Frederik With The Jørn Grauengaard Quintet	Columbia 7": 45-DB 4536	03:16	4	26.11.1960	⊙	10.12.1960				
9	11	7	↑4	Man Of Mystery / The Stranger - The Shadows	Columbia 7": 45-DB 4530	01:58	4	12.11.1960		03.12.1960				
8	7	8	↓1	Goodness Gracious Me! - Peter Sellers & Sophia Loren	Parlophone 7": 45-R 4702	03:01	5	19.11.1960		03.12.1960				
7	8	9	↓1	Strawberry Fair - Anthony Newley	Decca 7": 45-F 11295	02:21	5	26.11.1960	⊙	10.12.1960				
13	13	10	↑3	Rocking Goose - Johnny and the Hurricanes	London 7": 45-HLX 9190	01:47	2	01.10.1960	⊙	26.11.1960				
4	9	11	↓2	Perfidia - The Ventures	London 7": 45-HLG 9232	02:03	5	17.12.1960		14.01.1961				
4	12	12	↔	Counting Teardrops - Emile Ford And The Checkmates	Pye 7": 7N 15314	02:18	5	17.12.1960		21.01.1961				
6	10	13	↓3	Gurney Slade - Max Harris with His Group	Fontana 7": H 282	02:07	9	03.12.1960		24.12.1960				
1	NE	14		Sway - Bobby Rydell	Columbia 7": 45-DB 4545	02:25	13	07.01.1961		14.01.1961				
1	NE	15		Buona Sera - Mr. Acker Bilk and his Paramount Jazz Band	Columbia 7": 45-DB 4544	03:37	10	07.01.1961		21.01.1961				
1	NE	16		Portrait Of My Love - Matt Monro	Parlophone 7": 45-R 4714	02:46	4	07.01.1961		28.01.1961				
1	NE	17		Strawberry Blonde (The Band Rocked On) - Frank D'Rone, Orchestra Conducted by David Carroll	Mercury 7": 45-AMT 1123	01:43	17	07.01.1961		07.01.1961				
12	19	18	↑1	Dreamin' - Johnny Burnette	London 7": 45-HLG 9172	02:21	4	22.10.1960		19.11.1960				
8	14	19	↓5	Blue Angel - Roy Orbison	London 7": 45-HLU 9207	02:49	11	12.11.1960		24.12.1960				
20	17	20	↓3	As Long As He Needs Me - Shirley Bassey and The Rita Williams Singers with Geoff Love and His Orchestra	Columbia 7": 45-DB 4490	03:00	2	13.08.1960	⊙	29.10.1960				

Chart For The Week Ending 14 January 1961										This chart contains 20 entries with 9 falling, 6 climbing, 3 non-movers, 0 re-entries and 2 new entries. The average age of chart entries is 6.4 weeks.				
7	1	1	↔	Poetry In Motion (N1 #62) - Johnny Tillotson	London 7": 45-HLA 9231	02:30	1	03.12.1960	⊙	07.01.1961				
7	2	2	↔	I Love You - Cliff Richard and the Shadows	Columbia 7": 45-DB 4547	02:04	1	03.12.1960	⊙	31.12.1960				
11	4	3	↑1	Save The Last Dance For Me - The Drifters	London 7": 45-HLK 9201	02:30	2	05.11.1960	⊙	03.12.1960				
11	3	4	↓1	It's Now Or Never (O Sole Mio) - Elvis Presley with The Jordanaires	RCA 7": 45-RCA 1207	03:16	1	05.11.1960	*	05.11.1960				
5	11	5	↑6	Perfidia - The Ventures	London 7": 45-HLG 9232	02:03	5	17.12.1960		14.01.1961				
5	12	6	↑6	Counting Teardrops - Emile Ford And The Checkmates	Pye 7": 7N 15314	02:18	5	17.12.1960		21.01.1961				
7	5	7	↓2	Lonely Pup (In A Christmas Shop) - Adam Faith with the children and accomp. Directed by John Barry	Parlophone 7": 45-R 4708	01:47	4	03.12.1960	⊙	31.12.1960				
10	7	8	↓1	Man Of Mystery / The Stranger - The Shadows	Columbia 7": 45-DB 4530	01:58	4	12.11.1960		03.12.1960				
9	8	9	↓1	Goodness Gracious Me! - Peter Sellers & Sophia Loren	Parlophone 7": 45-R 4702	03:01	5	19.11.1960	⊙	03.12.1960				
2	16	10	↑6	Portrait Of My Love - Matt Monro	Parlophone 7": 45-R 4714	02:46	4	07.01.1961		28.01.1961				
14	10	11	↓1	Rocking Goose - Johnny and the Hurricanes	London 7": 45-HLX 9190	01:47	2	01.10.1960	⊙	26.11.1960				
8	9	12	↓3	Strawberry Fair - Anthony Newley	Decca 7": 45-F 11295	02:21	5	26.11.1960	⊙	10.12.1960				
2	14	13	↑1	Sway - Bobby Rydell	Columbia 7": 45-DB 4545	02:25	13	07.01.1961		14.01.1961				
1	NE	14		Stay - Maurice Williams & the Zodiacs	Top Rank 7": JAR 526	01:38	12	14.01.1961		28.01.1961				
2	15	15	↔	Buona Sera - Mr. Acker Bilk and his Paramount Jazz Band	Columbia 7": 45-DB 4544	03:37	10	07.01.1961		21.01.1961				
9	19	16	↑3	Blue Angel - Roy Orbison	London 7": 45-HLU 9207	02:49	11	12.11.1960		24.12.1960				
8	6	17	↓11	Little Donkey - Nina and Frederik With The Jørn Grauengaard Quintet	Columbia 7": 45-DB 4536	03:16	4	26.11.1960	⊙	10.12.1960				
1	NE	18		Like Strangers - The Everly Brothers	London 7": 45-HLA 9250	01:59	11	14.01.1961		21.01.1961				
7	13	19	↓6	Gurney Slade - Max Harris with His Group	Fontana 7": H 282	02:07	9	03.12.1960		24.12.1960				
2	17	20	↓3	Strawberry Blonde (The Band Rocked On) - Frank D'Rone, Orchestra Conducted by David Carroll	Mercury 7": 45-AMT 1123	01:43	17	07.01.1961		07.01.1961				

Disc 1961 Singles Charts

This decade will showcase various other charts from the 1960's, allowing the reader to see how they all stack up against each other. This section showcases the Disc chart, a Top 20 with no weeks where the chart was not compiled in 1961.

29 Jul A revised chart is printed the following week due to a printing error when number 6 was missed out.

Chart For The Week Ending 7 January 1961

This chart contains 20 entries with 7 falling, 5 climbing, 3 non-movers, 0 re-entries and 5 new entries. The average age of chart entries is 5 weeks.

6	1	1	↔	'D' In Love (N1 #41) - <i>Cliff Richard and the Shadows</i> Columbia 7": 45-DB 4547	02:34	1	03.12.1960	24.12.1960
5	3	2	↑1	Poetry In Motion - <i>Johnny Tillotson</i> London 7": 45-HLA 9231	02:30	1	10.12.1960	⊙ 14.01.1961
6	4	3	↑1	Lonely Pup (In A Christmas Shop) - <i>Adam Faith with the children and accomp. Directed by John Barry</i> Parlophone 7": 45-R 4708	01:47	3	03.12.1960	07.01.1961
10	2	4	↓2	It's Now Or Never (O Sole Mio) - <i>Elvis Presley with The Jordanaires</i> RCA 7": 45-RCA 1207	03:16	1	05.11.1960	* 05.11.1960
9	5	5	↔	Save The Last Dance For Me - <i>The Drifters</i> London 7": 45-HLK 9201	02:30	2	12.11.1960	⊙ 10.12.1960
1	NE	6		Strawberry Fair - <i>Anthony Newley</i> Decca 7": 45-F 11295	02:21	6	07.01.1961	⊙ 07.01.1961
7	7	7	↔	Little Donkey - <i>Nina and Frederik With The Jørn Grauengaard Quintet</i> Columbia 7": 45-DB 4536	03:16	4	26.11.1960	⊙ 17.12.1960
5	9	8	↑1	Perfidia - <i>The Ventures</i> London 7": 45-HLG 9232	02:03	3	10.12.1960	14.01.1961
5	10	9	↑1	Gurney Slade - <i>Max Harris with His Group</i> Fontana 7": H 282	02:07	9	10.12.1960	07.01.1961
4	12	10	↑2	Counting Teardrops - <i>Emile Ford And The Checkmates</i> Pye 7": 7N 15314	02:18	5	17.12.1960	21.01.1961
8	8	11	↓3	Goodness Gracious Me! - <i>Peter Sellers & Sophia Loren</i> Parlophone 7": 45-R 4702	03:01	4	19.11.1960	03.12.1960
1	NE	12		Portrait Of My Love - <i>Matt Monro</i> Parlophone 7": 45-R 4714	02:46	5	07.01.1961	28.01.1961
1	NE	13		Strawberry Blonde (The Band Rocked On) - <i>Frank D'Rone, Orchestra Conducted by David Carroll</i> Mercury 7": 45-AMT 1123	01:43	11	07.01.1961	14.01.1961
14	11	14	↓3	Rocking Goose - <i>Johnny and the Hurricanes</i> London 7": 45-HLX 9190	01:47	4	08.10.1960	⊙ 05.11.1960
1	NE	15		Sway - <i>Bobby Rydell</i> Columbia 7": 45-DB 4545	02:25	11	07.01.1961	21.01.1961
8	13	16	↓3	Man Of Mystery / The Stranger - <i>The Shadows</i> Columbia 7": 45-DB 4530	01:58	2	19.11.1960	03.12.1960
2	16	17	↓1	Like Strangers - <i>The Everly Brothers</i> London 7": 45-HLA 9250	01:59	16	31.12.1960	31.12.1960
3	14	18	↓4	Little Girl - <i>Marty Wilde</i> Philips 7": PB 1078	01:40	14	24.12.1960	31.12.1960
3	17	19	↓2	Black Stockings - <i>The John Barry Seven</i> Columbia 7": 45-DB 4554	02:21	17	24.12.1960	31.12.1960
1	NE	20		Buona Sera - <i>Mr. Acker Bilk and his Paramount Jazz Band</i> Columbia 7": 45-DB 4544	03:37	11	07.01.1961	18.02.1961

Chart For The Week Ending 14 January 1961

This chart contains 20 entries with 7 falling, 9 climbing, 2 non-movers, 1 re-entry and 1 new entry. The average age of chart entries is 5.75 weeks.

6	2	1	↑1	Poetry In Motion (N1 #42) - <i>Johnny Tillotson</i> London 7": 45-HLA 9231	02:30	1	10.12.1960	⊙ 14.01.1961
7	1	2	↓1	'D' In Love - <i>Cliff Richard and the Shadows</i> Columbia 7": 45-DB 4547	02:34	1	03.12.1960	24.12.1960
6	8	3	↑5	Perfidia - <i>The Ventures</i> London 7": 45-HLG 9232	02:03	3	10.12.1960	14.01.1961
7	3	4	↓1	Lonely Pup (In A Christmas Shop) - <i>Adam Faith with the children and accomp. Directed by John Barry</i> Parlophone 7": 45-R 4708	01:47	3	03.12.1960	⊙ 07.01.1961
10	5	5	↔	Save The Last Dance For Me - <i>The Drifters</i> London 7": 45-HLK 9201	02:30	2	12.11.1960	⊙ 10.12.1960
11	4	6	↓2	It's Now Or Never (O Sole Mio) - <i>Elvis Presley with The Jordanaires</i> RCA 7": 45-RCA 1207	03:16	1	05.11.1960	* 05.11.1960
5	10	7	↑3	Counting Teardrops - <i>Emile Ford And The Checkmates</i> Pye 7": 7N 15314	02:18	5	17.12.1960	21.01.1961
2	12	8	↑4	Portrait Of My Love - <i>Matt Monro</i> Parlophone 7": 45-R 4714	02:46	5	07.01.1961	28.01.1961
2	6	9	↓3	Strawberry Fair - <i>Anthony Newley</i> Decca 7": 45-F 11295	02:21	6	07.01.1961	⊙ 07.01.1961
6	9	10	↓1	Gurney Slade - <i>Max Harris with His Group</i> Fontana 7": H 282	02:07	9	10.12.1960	07.01.1961
2	13	11	↑2	Strawberry Blonde (The Band Rocked On) - <i>Frank D'Rone, Orchestra Conducted by David Carroll</i> Mercury 7": 45-AMT 1123	01:43	11	07.01.1961	14.01.1961
9	11	12	↓1	Goodness Gracious Me! - <i>Peter Sellers & Sophia Loren</i> Parlophone 7": 45-R 4702	03:01	4	19.11.1960	⊙ 03.12.1960
2	15	13	↑2	Sway - <i>Bobby Rydell</i> Columbia 7": 45-DB 4545	02:25	11	07.01.1961	21.01.1961
15	14	14	↔	Rocking Goose - <i>Johnny and the Hurricanes</i> London 7": 45-HLX 9190	01:47	4	08.10.1960	⊙ 05.11.1960
9	16	15	↑1	Man Of Mystery / The Stranger - <i>The Shadows</i> Columbia 7": 45-DB 4530	01:58	2	19.11.1960	03.12.1960
4	18	16	↑2	Little Girl - <i>Marty Wilde</i> Philips 7": PB 1078	01:40	14	24.12.1960	31.12.1960
2	20	17	↑3	Buona Sera - <i>Mr. Acker Bilk and his Paramount Jazz Band</i> Columbia 7": 45-DB 4544	03:37	11	07.01.1961	18.02.1961
1	NE	18		North To Alaska - <i>Johnny Horton</i> Philips 7": PB 1062	02:46	18	14.01.1961	14.01.1961
3	17	19	↓2	Like Strangers - <i>The Everly Brothers</i> London 7": 45-HLA 9250	01:59	16	31.12.1960	31.12.1960
6	RE	20		Blue Angel - <i>Roy Orbison</i> London 7": 45-HLU 9207	02:49	17	26.11.1960	26.11.1960

Melody Maker 1961 EP Charts

Chart Milestones

Melody Maker began a Top 10 EP chart in 1959 and this continued until mid 1963. No chart weeks went un-compiled during 1961, so all are shown. Record Retailer also showcased an EP chart during this period, as can be seen later in the volume.

Record Retailer 1961 EP Charts

Chart Milestones

Record Retailer began an EP chart in 1960 and continued this until the end of 1967. Chart dates have been re-dated to a Saturday date, two days after the issue date and approximately 7 days after the compilation period. While some will dispute the reasons for doing this, the dating has been in use since the first Albums book in 1983 by Guinness. It is, therefore, what most expect to see.

The chart was a Top 20 for the entire year, with no charts not compiled.

Disc Singles Bubbling Under 1961 Charts

Chart Milestones

Disc listed a breakers chart during much of its life, and those used in 1961 are listed here. Usually the chart listed either 1, 2 or 3 records, and how many and which week is shown below.

7 Jan	1 breaker listed this week	8 Jul	2 breakers listed this week
14 Jan	1 breaker listed this week	15 Jul	2 breakers listed this week
21 Jan	3 breakers listed this week	22 Jul	2 breakers listed this week
28 Jan	2 breakers listed this week	29 Jul	2 breakers listed this week
4 Feb.....	1 breaker listed this week	5 Aug	2 breakers listed this week
11 Feb.....	2 breakers listed this week	12 Aug	1 breaker listed this week
18 Feb.....	1 breaker listed this week	26 Aug	1 breaker listed this week
25 Feb.....	1 breaker listed this week	2 Sept.....	1 breaker listed this week
4 Mar	2 breakers listed this week	9 Sept.....	2 breakers listed this week
11 Mar	2 breakers listed this week	16 Sept.....	1 breaker listed this week
18 Mar	1 breaker listed this week	23 Sept.....	2 breakers listed this week
25 Mar	2 breakers listed this week	30 Sept.....	2 breakers listed this week
1 Apr	2 breakers listed this week	7 Oct	2 breakers listed this week
8 Apr	1 breaker listed this week	14 Oct	2 breakers listed this week
15 Apr	2 breakers listed this week	21 Oct	1 breaker listed this week
22 Apr	3 breakers listed this week	28 Oct	1 breaker listed this week
29 Apr	2 breakers listed this week	4 Nov	2 breakers listed this week
6 May.....	1 breaker listed this week	11 Nov	3 breakers listed this week
13 May.....	2 breakers listed this week	18 Nov	1 breaker listed this week
20 May.....	1 breaker listed this week	25 Nov	1 breaker listed this week
27 May.....	2 breakers listed this week	2 Dec.....	2 breakers listed this week
3 Jun	2 breakers listed this week	9 Dec.....	2 breakers listed this week
10 Jun	2 breakers listed this week	16 Dec.....	2 breakers listed this week
17 Jun	2 breakers listed this week	23 Dec.....	2 breakers listed this week
24 Jun	2 breakers listed this week	30 Dec.....	1 breaker listed this week
1 Jul	2 breakers listed this week		

CrossTab Analysis 1961 Charts

The final pages here showcase the weekly Top 30's of 1961 from the now official chart of the 1960's, Record Retailer, the NME, Disc, Melody Maker and Record Mirror. The aim is to showcase the similarities and the differences. Records are ranked by their peak in that week across all the charts shown. Only those records in the Top 30 on any chart are shown, with any positions outside the Top 30 shown as appropriate.

This feature will only appear in the 1960's decade.

Weekly Charts Side By Side

Lists all the records to appear on the charts shown, linked to show each track once. When the title as listed on the different charts is different (for example if a record was a double A-Side or a single side for the majority of the run) then the record will be listed on a different line. Some charts may be shown in the header with no data if none is included for the specific week shown. Data is sorted by highest position across all the charts, then by Artist and finally title.

Chart For The Week Ending 7 January 1961

	The Official UK Singles Chart	The NME Singles Charts	Disc Singles	Melody Maker Singles Chart	Record Mirror Single Charts
D' In Love (Cliff Richard and the Shadows) <i>Columbia</i>			1		
I Love You (Cliff Richard and the Shadows) <i>Columbia</i>	1	3		2	3
Poetry In Motion (Johnny Tillotson) <i>London</i>	3	1	2	1	1
Save The Last Dance For Me (The Drifters) <i>London</i>	2	2	5	4	2
Lonely Pup (In A Christmas Shop) (Adam Faith with the children and accomp. Directed by John Barry) <i>Parlophone</i>	4	5	3	5	5
It's Now Or Never (O Sole Mio) (Elvis Presley with The Jordanaires) <i>RCA</i>	6	4	4	3	4
Strawberry Fair (Anthony Newley) <i>Decca</i>	5	9	6	9	7
Rocking Goose (Johnny and the Hurricanes) <i>London</i>	10	6	14	10	14
Little Donkey (Nina and Frederik With The Jørn Grauegaard Quintet) <i>Columbia</i>	8	21	7	6	11
Perfidia (The Ventures) <i>London</i>	9	8	8	11	6
Goodness Gracious Me! (Peter Sellers & Sophia Loren) <i>Parlophone</i>	7	7	11	8	9
Man Of Mystery / The Stranger (The Shadows) <i>Columbia</i>	13		16	7	8
Counting Teardrops (Emile Ford And The Checkmates) <i>Pye</i>	11	12	10	12	9
Gurney Slade (Max Harris with His Group) <i>Fontana</i>	16	18	9	13	
Man Of Mystery (The Shadows) <i>Columbia</i>		10			
Blue Angel (Roy Orbison) <i>London</i>	19	11		19	18
Portrait Of My Love (Matt Monro) <i>Parlophone</i>	12	13	12	16	12
Strawberry Blonde (The Band Rocked On) (Frank D'Rone, Orchestra Conducted by David Carroll) <i>Mercury</i>	33	14	13	17	15
Wild Side Of Life (Josh MacRae) <i>Pye</i>					13
Lively (Lonnie Donegan and his Group) <i>Pye</i>	14	25			
Sway (Bobby Rydell) <i>Columbia</i>	24	16	15	14	
Little Girl (Marty Wilde) <i>Philips</i>	29	14	18		17
Buona Sera (Mr. Acker Bilk and his Paramount Jazz Band) <i>Columbia</i>	30	16	20	15	20
My Heart Has A Mind Of It's Own (Connie Francis, Orchestra Conducted by Joe Sherman) <i>MGM</i>	15	24			
Ten Swingin' Bottles (Pete Chester And The Consulates) <i>Pye</i>					16
Like Strangers (The Everly Brothers) <i>London</i>	18	23	17		20
My Love For You (Johnny Mathis with Orchestra arranged and conducted by Glenn Osser) <i>Fontana</i>	17	30			
Dreamin' (Johnny Burnette) <i>London</i>	23	27		18	
Black Stockings (The John Barry Seven) <i>Columbia</i>	45	30	19		
Stay (Maurice Williams & the Zodiacs) <i>Top Rank</i>	36	19			19
As Long As He Needs Me (Shirley Bassey and The Rita Williams Singers with Geoff Love and His Orchestra) <i>Columbia</i>	21	20		20	
Ol' Mac Donald (Frank Sinatra, Orchestra Conducted by Nelson Riddle) <i>Capitol</i>	20				
It's You That I Love (Marion Ryan with Tony Osborne and his Orchestra) <i>Columbia</i>		28			
Till (Tony Bennett, Music by De Vol) <i>Philips</i>	35	22			
Mr. Custer (Charlie Drake) <i>Parlophone</i>	22				
Just As Much As Ever (Nat King Cole, Orchestra Conducted by Dave Cavanaugh) <i>Capitol</i>	25				
Only The Lonely (Know How I Feel) (Roy Orbison) <i>London</i>	26				
Chariot (Rhet Stoller) <i>Decca</i>		26			
Milord (Edith Piaf, Orchestra directed by Robert Chauvigny) <i>Columbia</i>	27				
Even More Party Pops (Russ Conway, Accompaniment Directed by Geoff Love) <i>Columbia</i>	28				
G.I. Blues (OST) (Elvis Presley) <i>RCA</i>		28			