

VISIT LOFSDALEN

ACTIVITIES & ACCOMMODATION 2025



Co-funded by
the European Union

REGION
JÄMTLAND
HÄRJEDALEN



ACCOMMODATION

SKI LODGE 1125

AVAILABILITY & PRICING:

Summer only (week 23-39).

Price example week 27-32

7 nights: 16 116 SEK (approximately €1414.43*)

Sun-Thur: 8058 SEK (approximately €706*)

Thur-sun: 12 089 SEK (approximately €1060*)

Per night: 2686 SEK (approximately €235*)



*All prices in Euros are approximate and based on the exchange rate of 1 SEK = €0.088 as of today 2024-03-22. Please note that the final price in Euros may vary according to the exchange rate at the time of payment.

SIZE: 12+2 BEDS

At the top of the area Fjällterrassen you will find Ski Lodge 1125. Here you live in an exclusive and large accommodation with modern and luxurious lodge feeling. You have ski slopes and downhill slopes outside the door.

Ski Lodge 1125 consists of 10 apartments in semi-detached houses that are newly built for the 19/20 season. The cottages are 145 sqm large and have 12 + 2 beds, two living rooms with smart TV and basic channels, a toilet and two bathrooms (one with sauna and shower and one with shower). All cottages have a cozy atmosphere with nice dark tones, wood paneling and wooden floors in all rooms with the exception of bathrooms and halls that have stone floors. The large panoramic windows offer soothing views of the mountains and the cottages have a south-facing terrace. Sauna, wood-burning stove, drying cabinet, washing machine, dryer and Wi-Fi are available in the cottages.

Pets and smoking are not allowed in the cottages.

website: <https://www.lofsdalen.com/en/stays/village/1783377>



UTSIKTEN HÖGLANDET

AVAILABILITY & PRICING:

Summer (week 23-39) and winter (week 2-8,10-17)

Price example 4 beds, week 27-32

7 nights: 9258 SEK (approximately €814.7*)
Sun-Thur: 4629 SEK (approximately €407.35*)
Thur-Sun: 6946 SEK (approximately €611.25*)
Per night: 1543 SEK (approximately €135.78*)



Price example 4 beds, week 5-6

7 nights (sun-sun, sat-sat): 9433 SEK (approximately €830.1*)
Sun-Thur: 4714 SEK (approximately €414.83*)
Thur-Sun: 7080 SEK (approximately €623.04*)

Price example 8 beds, week 27-32

7 nights: 12,638 SEK (approximately €1112.14*)
Sun-Thur: 6320 SEK (approximately €556.16*)
Thur-Sun: 9477 SEK (approximately €833.98*)
Per night: 2106 SEK (approximately €185.33*)

Price example 8 beds, week 5-6

7 nights (sun-sun, sat-sat): 13,489 SEK (approximately €1187.03*)
Sun-Thur: 6745 SEK (approximately €593.56*)
Thur-Sun: 10,120 SEK (approximately €890.56*)

*All prices in Euros are approximate and based on the exchange rate of 1 SEK = €0.088 as of today 2024-03-22. Please note that the final price in Euros may vary according to the exchange rate at the time of payment.

SIZE: 4+2 BEDS

Top modern house with an amazing location on top of Högländet. High ceilings and big windows with a mileswide view over the mountains. The houses are located with an immediate connection to everything you need for an active summer or winter vacation.

Utsikten has a total of 67 square meters on two floors. The house has a total of 4+2 beds divided into two bedrooms.

You are welcomed by a hall with suspension and technical part followed by entrance to bathroom with sauna and a lovely master bedroom with a double bed. To the south is the entrance to a large cottage with an open-plan kitchen and dining area, panoramic windows and high ceilings provide wonderful light and space. Wood-burning stove and exit to veranda. A spiral staircase leads up to a cozy living room with TV and sofa bed where the two extra beds are, followed by another bedroom with 2 beds.

SIZE: 8 BEDS

Top modern house with an amazing location on top of Högländet. High ceilings and big windows with a mileswide view over the mountains. The houses are located with an immediate connection to everything you need for an active summer or winter vacation.

Utsikten is a house of 98 square meters. The house has 8 beds, two floors and three bedrooms.

On the first floor you find a spacious hallway with a wardrobe and a drying cabinet. From the hallway you enter the master bedroom, that has a double bed in it and there is also a bathroom with a shower on this

floor. Straight forward from the hallway you find the fully equipped kitchen and dining room with high ceilings. You can enter the terrace from here as well. One floor down there is a lounge and TV, two bedrooms and a bathroom with shower and sauna. One of the bedrooms consists out of four beds, a bunk bed with a wider underbed (160 cm) and one single bed. The other bedroom on this floor has one double bed.

Website: <https://www.lofsdalen.com/en/stays/village/1926810>



FJÄLLTERRASSEN

AVAILABILITY & PRICING:

Summer only (week 23-39) Price example week 27-32

7 nights: 7629 SEK (approximately €671.35*)

Sun-Thur: 3812 SEK (approximately €335.46*)

Thur-Sun: 5723 SEK (approximately €503.62*)

Per night: 1270 SEK (approximately €111.76*)

*All prices in Euros are approximate and based on the exchange rate of 1 SEK = €0.088 as of today 2024-03-22. Please note that the final price in Euros may vary according to the exchange rate at the time of payment.



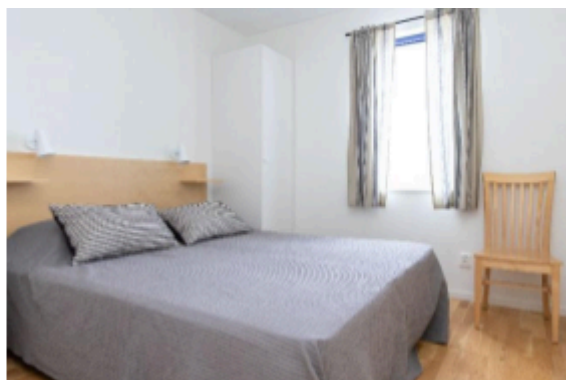
SIZE: 8 BEDS

Large and spacious apartments, perfect for families with children. From this lodging you have access to alpine skiing, cross-country trails, playgrounds and restaurants.

The apartments are modern and spacious situated near the lifts. You have close access to alpine skiing for children as well as adults, great cross-country trails, and several restaurants. Playground for Children is available outdoors and inside at Aktivitetshuset which is right next door. The modern and airy apartments have 8 beds.

During the summer you have Lofsdalen Bike Park around the corner.

website: <https://www.lofsdalen.com/en/stays/village/1386940>



LOFSDALENS FJÄLLHOTELL

AVAILABILITY & PRICING:

Summer of 2025 (week 19-49) is the hotel closed due to interior update and renovation.

Winter 24/25 starts December 13th and ends after easter, April 21th.

Price examples – Category Double room

All prices includes Buffet breakfast and full hotel service

Week 2-6 (rack rate)

Per night: 1 290 – 1 990 SEK
(approximately € 113.50 - € 175*)

Week 7-8 and 10-12 (rack rate)

Per night: 1 490 – 2 990 SEK
(approximately € 131 - € 263*)

Price examples – Category Family room (2+2 persons)

All prices includes Buffet breakfast and full hotel service;

Week 2-6

Per night: 1 790 – 2 790 SEK (approximately € 157 - € 245*)

Week 7-8 and 10-12

Per night: 1 790 – 3 490 SEK (approximately € 157 - € 307*)

Offers & discounts

3 nights stay gives 5% discount

4-5 nights stay gives 10% discount

6-7 nights stay gives 15% discount

**All prices in Euros are approximate and based on the exchange rate of 1 SEK = €0.088 as of today 2024-03-22.*

Please note that the final price in Euros may vary according to the exchange rate at the time of payment.

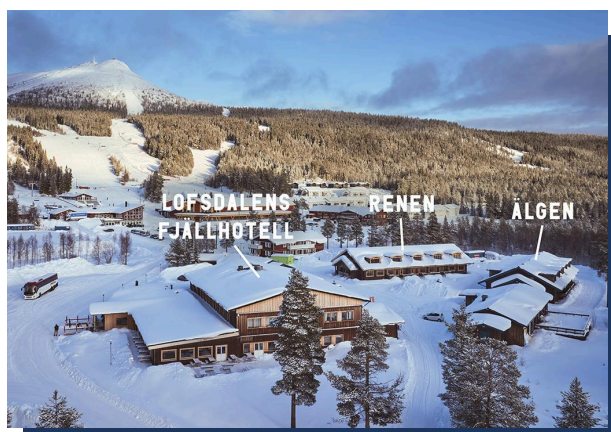
ABOUT LOFSDALENS FJÄLLHOTELL

Welcome to our very cosy newly renovated mountain hotel with lots of activities and an extraordinary dining experience. The hotel offers a stay where you can live and discover the Scandinavian design and interiors with a combination of function and “retro feeling”.

Enjoy the sun on the terrace overlooking the Lofsdalen ski area and mountains, or have a glass of wine in our cosy lounge. At the same time, the kids can enjoy our skating rink, play table tennis, billiards or watch a movie.

Walking distance to the ski lifts and almost 500 vertical metres of alpine skiing, plus newly groomed cross-country skiing tracks around the knot. Or rent a scooter, play bowling or padel.

Lofsdalens Fjällhotell has 21 hotel rooms in the main building, 20 hotel rooms/studios in an adjacent annex and 10 apartments for groups of up to six people in another annex.



ROOM CATEGORIES:



Double room - Standard

Room for 2 people with a twin bed. The room has a small but functional bathroom with shower/wc. Free Wi-Fi.

Double room – Plus 2 (including bed sofa)

Room for 2 people with a twin bed and an extra sofa bed for 2 extra children. The room has a small but functional bathroom with shower/wc. Free Wi-Fi.

Family room

Room for 2 adults in a double bed and a bunk bed for 2 extra children. The rooms have a small but functional bathroom with shower/wc. Free Wi-Fi.

More info

Website: <https://www.lofsdalen.com/sv/stays/hotel/2026972>

FOOD, BEVERAGES & LOUNGES



Our restaurant offers European Alps inspired food in a Swedish style with a lot of vegetarian options. High quality without being pretentious, so to speak. Lots of heart, high ambition and of course cooked from scratch with ingredients from local and selected producers.

More info and menus, take a shortcut and visit web: <https://lofsdalensfjallhotell.se/en/meny>

HOTELLBYN APARTMENTS – Part of Lofsdalens Fjällhotell

AVAILABILITY & PRICING:

Summer season includes week 19-49, all our apartments are updated and renovated within the last two years and available to book with optional arriving, no minimum stay.

Winter 24/25 starts December 13th and ends after easter, April 21th.

Category Älgen 4 beds - Price examples week 27-32

Per night: 999 SEK (approximately € 88 *)

Category Älgen 4 beds - Price examples week 2-6

7 nights (sun-sun, sat-sat): 6 490 SEK (approximately € 571*)

Sun-Thur: 3 495 SEK (approximately € 308*)

Thur-Sun: 4 795 SEK (approximately € 422*)

Category Älgen 4 beds - Price examples week 10-12

7 nights (sun-sun, sat-sat): 8 990 SEK (approximately € 791*)

Sun-Thur: 4 990 SEK (approximately € 439*)

Thur-Sun: 6 690 SEK (approximately € 589*)

Category Renen 6 beds - Price examples week 27-32

Per night: 1 242 SEK (approximately €109 *)

Category Renen 6 beds - Price examples week 5-6

7 nights (sun-sun, sat-sat): 8 980 SEK (approximately € 790*)

Sun-Thur: 4 895 SEK (approximately € 431*)

Thur-Sun: 6 695 SEK (approximately € 589*)

Category Renen 6 beds - Price examples week 10-12

7 nights (sun-sun, sat-sat): 12 490 SEK (approximately € 1 099*)

Sun-Thur: 6 995 SEK (approximately € 616*)

Thur-Sun: 9 495 SEK (approximately € 836*)

**All prices in Euros are approximate and based on the exchange rate of 1 SEK = €0.088 as of today 2024-03-22. Please note that the final price in Euros may vary according to the exchange rate at the time of payment.*



CATEGORY: ÄLGEN 4 BEDS & ÄLGEN 4+2 BEDS - APARTMENTS

Apartment for 4 people with kitchenette, always including departure cleaning. The apartment is directly adjacent to Lofsdalen's Fjällhotell and within walking distance of the ski area.

Apartment for 4 people of approx. 40 square meters in direct connection to Lofsdalen's Fjällhotell. The apartment is arranged with a bedroom with a bunk bed, a sleeping loft/bedroom with two single beds, a simple but functional bathroom with shower/wc, a kitchenette for easier cooking and a seating area. Free Wi-fi.

Add on - bed linen and hotel breakfast and get the best of both worlds - your own mountain studio where you can socialize and cook while you can sleep an extra hour while we prepare breakfast.

During the periods the hotel is open, the guests have access to the hotel's lovely social areas, which together with the restaurant and bar create a fantastic overall experience.

More info, web: <https://www.lofsdalen.com/sv/stays/cabindetail/2588350?> - Pls note, images shows these apartments from before updating and renovating, in process summer of 2024.

CATEGORY: RENEN 6 BEDS BEDS APARTMENTS

Apartment for 6 people of approx. 64 square meters on the first floor, always including departure cleaning. The apartment is directly adjacent to Lofsdalen's Fjällhotell and within walking distance of the ski area.

Our six-bed apartments are ten completely newly renovated and well-planned apartments, right next to both the ski slopes and the cross-country trail with full access to all the hotel's amenities.

The apartments have spacious entrances with associated drying rooms, brand new and fully equipped kitchens, new modern bathrooms, three cozy bedrooms and well-thought-out living areas.

Here you comfortably stay six people and can feed yourself while you can enjoy everything the hotel has to offer. Sleep an extra hour in the morning and have a hotel breakfast, slip into a glass of wine at the bar or a beer on the veranda, or take it easy in the lounge while the kids play ping pong or hang out in the pillow cinema. Free Wi-fi.

More info, web: <https://www.lofsdalen.com/sv/stays/cabindetail/2588356>



SPECIALTY ACCOMMODATION

UPVALLENS FÄBOD SUMMER GLAMPING

SIZE: 2 BEDS PER TENT

PRICING:

2190 SEK per night (approximately €192.72*).

The price includes:

- A made-up double bed.
- Wood for the stove in the tent.
- Breakfast.
- Access to a wood-fired sauna and stream bath.
- Final cleaning.

Add on: Extra beds for children: 200 SEK per bed (approximately €17.60*).



Uppvallens Fäbod is a traditional mountain pasture situated in the heart of Lofsdalen. Rich in history and cultural significance, it offers visitors an authentic taste of the region's past.

The Fäbod is not just a scenic spot but a living testament to the area's agricultural heritage, where visitors can enjoy a hot sauna and a dip in the cold mountain creek, taste local delicacies, and even experience the serene beauty of staying overnight in its wonderful glamping tents.

Contact: carola.arnaryd@gmail.com

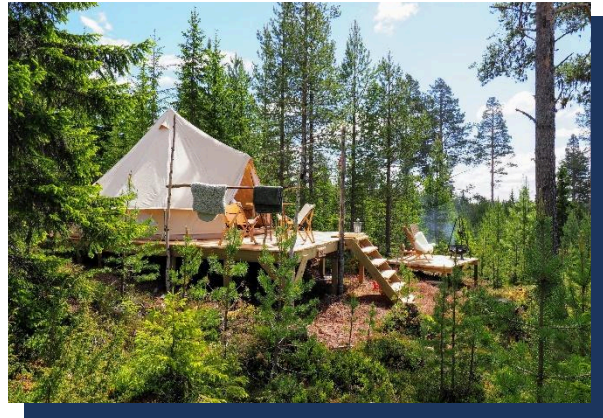
*All prices in Euros are approximate and based on today's exchange rate of 1 SEK = €0.088. Please note that the final price in Euros may vary according to the exchange rate at the time of payment. All prices are exclusive of VAT.

VAARTOE ADVENTURE CAMP

**BACK TO NATURE CAMP WITH TWO
FURNISHED TENTS AND A COZY CABIN**

SIZE: 2-4 BEDS PER ACCOMMODATION

PRICING: FROM 1150 SEK INCL BREAKFAST



Vaartoe Adventure Camp is a place where you can momentarily leave behind the stress of normal life. The main activities here involve chopping wood, enjoying the sounds of the surrounding forest, ensuring the fire under the grill is nice and hot, and indulging in a relaxing steam in the sauna. You can stay at one of the campsites or in a cosy Swedish cabin. Please note: we're not a glamping, so leave your trolley at home! The tents at our campsites come with a comfortable bed, but you'll need to heat your own water for the outdoor shower (real heroes, of course, shower cold) and for a warm fire in the tent on colder nights. It's back to basics here!

More info: www.vaartoe.com/adventure-camp

ACTIVITIES

LOFSDALEN'S WAFFLE HUT

One of Lofsdalen's must see highlights: enjoy a delicious Swedish waffle high up the mountain with great views over Lofsdalen.

ACTIVITIES & PRICING:

Summer Offer:

M/S Lofsdalen - Sauna Boat on the Beautiful Lofssjön

- Duration: July 10th to the end of September.
- Experience: Wood-fired sauna on Lofssjön. Try fishing for trout including a fishing license.
- Bear sausage tasting. Grilled dinner excluding drinks.
- Price: 1300 SEK per person (minimum 4 people) (approximately €114.4*).

Winter Offer:

Tracked Vehicle Tour with Lunch at the Mountain at Våffelstugan.

- Available: Week 2-7 and week 11-15.
- Price: 550 SEK per person (approximately €48.4*).



*Prices in Euros are based on the exchange rate of 1 SEK = €0.088. The final price in Euros may vary according to the exchange rate at the time of payment.

SKOTERHUSET LOFSDALEN

Lofsdalen's biggest snowmobile rental and snowmobile safari provider.

ACTIVITIES & PRICING:

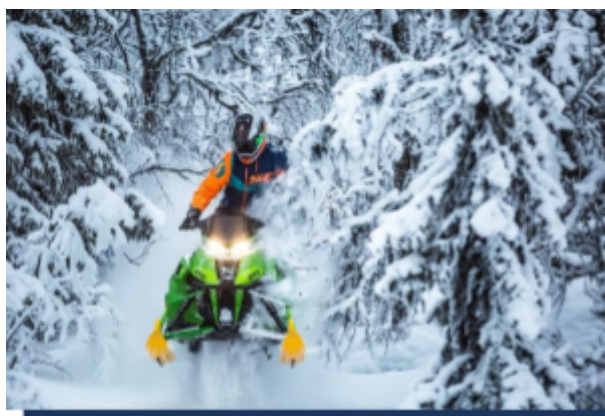
Snowmobile: FAMILY TOUR

Our incredibly popular snowmobile tour for the whole family. We take a trip around the mountains in Lofsdalen, and if time permits, we stop by the Waffle Hut to warm up with a waffle. This tour is tailored for those who want to travel at a more leisurely pace and/or who have not driven motor vehicles much before. Maximum 2 people per snowmobile.

The tour is approximately 30 kilometers.

Price: 862 SEK per snowmobile (approximately €75.86*).

*The price in Euros is based on the exchange rate of 1 SEK = €0.088. The final price in Euros may vary according to the exchange rate at the time of payment.



Wilderness Experience:

Join us for an adventure with your family, friends, or colleagues! The tour begins at the Snowmobile House with a journey around the mountain and concludes with an overnight stay in a meadow on the mountain. The package includes a snowmobile, a sleeping spot with bed linens, a towel, and access to the sauna.

Optional extras include meals (dinner and breakfast) from 450 SEK per person and a hot tub for 2500 SEK.

Price: 2285 SEK per person (excluding optional extras) (approximately €201.08*).

The tour requires a minimum of 8 persons and can accommodate up to 12 persons. The tour runs from Wednesday 15:00 to Thursday 09:00.

*The price in Euros is based on the exchange rate of 1 SEK = €0.088. The final price in Euros may vary according to the exchange rate at the time of payment.

Additionally, the Snowmobile House offers guided bike tours. For more information and pricing, please contact us or them directly. These tours provide an excellent opportunity to explore the scenic landscapes of the area in a unique and exciting way, guided by experienced professionals who know the best trails and spots to ensure a memorable experience. Whether you're looking for a leisurely ride or a more challenging adventure, they have options to suit all preferences and skill levels.

More info: www.skoterhuset.se

LOFSDALEN OUTDOOR

Become one with yourself and nature in Lofsdalen Outdoors.

ACTIVITIES & PRICING:

Activity box

All gym memberships provide access to Lofsdalen Outdoor's training box between 06:30-21:00 every day all year round, as well as scheduled group training sessions. The price for this membership is 150 SEK (approximately €13.20*).



*The price in Euros is based on the exchange rate of 1 SEK = €0.088. The final price in Euros may vary according to the exchange rate at the time of payment.

More info: www.lofsdalenoutdoor.com

NORTHLAND ON DEMAND

Feel free to reach out if you have any questions. If you want some other activities we can most likely provide it.

AVAILABILITY & PRICING:

Winter:

Mountain Loop - Guided Snowmobile Tour Half Day (Approx. 4 Hours):



This guided snowmobile tour takes us on a slightly longer journey around Lofsdalen, sticking to the trails that venture further out. The pace on this tour is a bit faster, and being an experienced driver is recommended. Along the way, we'll stop at a suitable location where our guide will prepare a simple meal. A minimum of an AM driving license is required for the guided tour. Track fee is an additional 150 SEK per snowmobile.

Price: 2396 SEK ex VAT per snowmobile (max 2 per snowmobile) (approximately €210.85*)

Sauna tent with ice hole on the lake (Approx. 4 Hours):

Recommended for 4-8 people.

Price: 3996 SEK ex VAT (approximately €351.65*)

Summer:

Sauna tent (approx. 4 Hours): Recommended for 4-8 people.

Price: 3996 SEK ex VAT (approximately €351.65*)

Summer fishing trip with boat:

Includes a light lunch.

Price per person: 1480 SEK ex VAT (approximately €130.24*)

*All prices in Euros are approximate and based on today's exchange rate of 1 SEK = €0.088. Please note that the final price in Euros may vary according to the exchange rate at the time of payment.

More info: www.northlandondemand.com

VAARTOE ADVENTURE CAMP

Vaartoe Adventure Camp offers family friendly guided tours in the Swedish Wilderness. You learn about the local plants and animals and maybe even spot some wildlife! A benefit for the Dutch and Belgian market is that the guides speak Dutch.



ACTIVITIES & PRICING:

- Half-day mountain tour: 2,972 SEK (approximately €260.67*) for 4 people
- Whole day tour Lofsdalen/Sonfjället: 4,199 SEK (approximately €368.29*) for 4 people
- Half-day snowshoe hike waffle hut: 1,840 SEK (approximately €161.38*) for 4 persons, including snowshoe rental and waffle menu
- Whole day backcountry ski touring: 6,815 SEK (approximately €599.72*) for 4 persons, including snow cat ride and ski rental

*Prices in Euros are based on the exchange rate of 1 SEK = €0.088. The final price in Euros may vary according to the exchange rate at the time of payment.

More info: www.vaartoe.com

WINTER SAUNA AND STREAM BATH

Uppvallens Fäbod is a traditional mountain pasture situated in the heart of Lofsdalen. Rich in history and cultural significance, it offers visitors an authentic taste of the region's past.

ACTIVITIES & PRICING:

Price: 750 SEK for 2 hours for 2 people (approximately €66.00*).

Additional guests: 240 SEK each (approximately €21.12*).

Children under 15 years: 80 SEK each (approximately €7.04*).

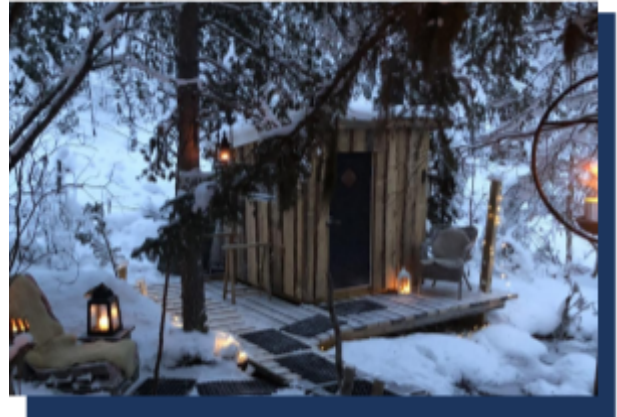
The price includes:

Heated wood-fired sauna.

Decorations with torches and pelts

Bath in a natural mountain stream.

Contact: carola.arnaryd@gmail.com



LOFSDALEN SKYBAR

Enjoy 360 degrees views while enjoying a Swedish whiskey or local craft beer in Sweden's highest whiskey storage.

ACTIVITIES & PRICING:

Whisky Tasting: 585 SEK per person (approximately €51.48*).

This event is held at Lofsdalen Skybar, situated 1125 meters above sea level.



*The price in Euros is approximate and based on today's exchange rate of 1 SEK = €0.088. Please note that the final price in Euros may vary according to the exchange rate at the time of payment.

More info: www.mpxgruppen.com/lofsdalen-skybar

DOG SLEDDING - NEW!

- One-hour sled tour including refreshments: 1500 SEK per person (approximately €132.00*).

- Three-hour sled tour including refreshments: 2050 SEK per person (approximately €180.40*).



PRICES SKIPASS 2023/2024

SKIPASS PURCHASED ONLINE OR AT THE SKIPASS CASHIER	YOUTH 8-15 YEARS SENIOR FR 65 YEARS	ADULT FR 16 YEARS	SKIPASS PURCHASED AT THE SKIPASS CASHIER	YOUTH 8-15 YEARS SENIOR FR 65 YEARS	ADULT FR 16 YEARS
AM 09.00-12.30	280 SEK	370 SEK	Parent skipass 6 days		2805 SEK
PM 12.00-16.00	330 SEK	415 SEK	Evening (wednesday) 17.00 - 20.00	165 SEK	200 SEK
1 day	380 SEK	465 SEK	9 days or more	230 SEK per day	20 SEK per day
2 days	720 SEK	900 SEK	5 av 7 days	1570 SEK	1945 SEK
3 days	1060 SEK	1320 SEK	3 av 7 days	1105 SEK	1365 SEK
4 days	1260 SEK	1575 SEK	10 points	525 SEK	650 SEK
5 days	1460 SEK	1815 SEK	1 point	60 SEK	70 SEK
6 days	1600 SEK	1995 SEK			
7 days	1720 SEK	2140 SEK			
8 days	1845 SEK	2305 SEK			
Seasonal skipass	3910 SEK	4835 SEK			



COMPARISON SKIPASS PRICES 2023-2024. PRICES IN SEK.

SKI RESPORT	1 DAY	6 DAYS	SEASON
Lofsdalen	465:-	1995:-	4835:-
Kläppen	490:-	2230:-	6170:-
Bränås	510:-	2295:-	5795:-
Idre Fjäll	557:-	2550:-	5730:-
Hemavan & Tärnaby			6495:-
Stöten	566:-	2427:-	6995:-
Sälen	534:-	2566:-	8475:-
Tännadalen	560:-	3047:-	6980:-
Ramundberget	560:-	2650:-	7150:-
Vemdalen	534:-	2566:-	8475:-
Åre	611:-	2934:-	8685:-