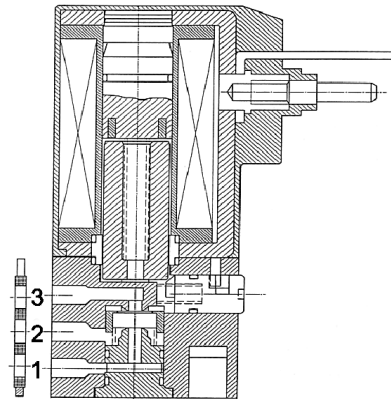


direct operated solenoid valves

coil 15 mm

general information	
ambient temperature	- 10°C to + 50°C
response time	3- 5 ms
mounting	in any position
standard seal materials*	NBR
dimensions	see page 2/3
coil data	see page 2/3
connector data	see page 2/3
sub-base	see page 3/3

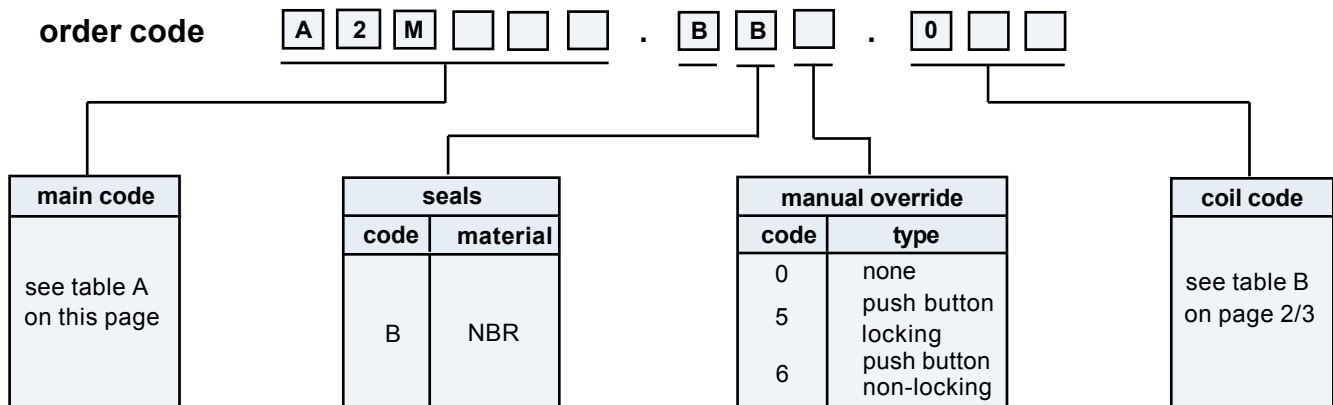
inlet port for:  
normally open 3  
normally closed 1



\* other seal materials on request

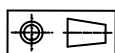
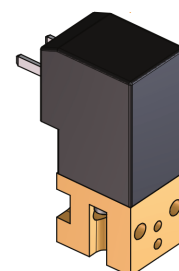
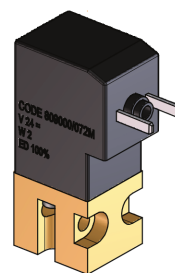
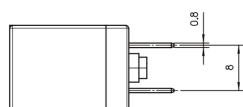
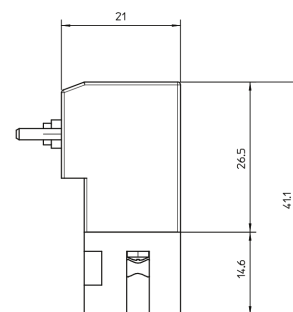
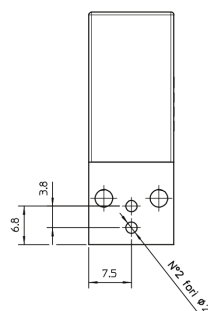
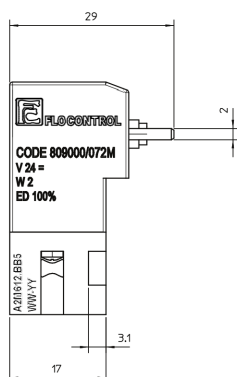
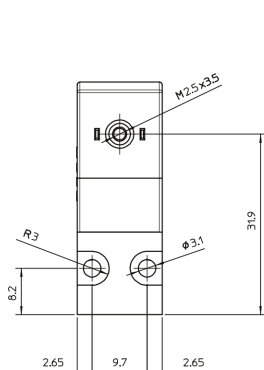
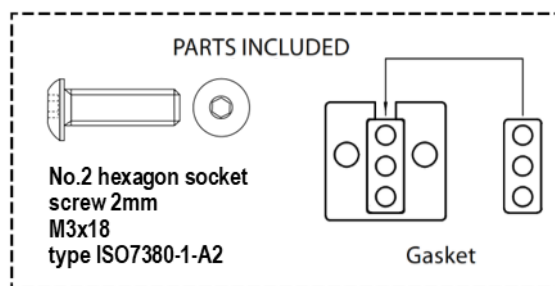
function	symbol	orifice mm	*Kv	pressure range (bar)			nominal power		TABLE A main code	
				min.	max. DC	max. AC	Watt DC	V.A. AC inr. hol.		
<b>2/2 normally closed (NC)</b> 		0.8	0.28	0	10	-	1	-	-	<b>A2M608</b>
		1.2	0.40	0	10	-	1.5	-	-	<b>A2M612</b>
		1.5	0.55	0	5	-	2	-	-	<b>A2M615</b>
<b>2/2 normally open (NO)</b> 		0.8	0.28	0	10	-	1	-	-	<b>A2M708</b>
		1.2	0.40	0	10	-	1.5	-	-	<b>A2M712</b>
		1.5	0.55	0	5	-	2	-	-	<b>A2M715</b>

\*l/min. of water with ΔP of 1 bar



direct operated solenoid valves

coil 15 mm



**weight** 55 g

coil code	TABLE B				
	*voltages	*	code		
			= DC		
			1 W	1.5 W	2 W
	12	-	067	066	068
	24	-	070	071	073

coil specification	
wire insulation	class H180° C
encapsulation	class H180° C
encapsulation mat.	Crastin
energising duration	100% at 20° C ambient
voltage variation	- 10% +15% of nom. volt.
power consumption	DC 1 - 1.5 - 2 Watt
electrical connection	AMP 2.8 x 0.5 (2P+ earth)
cable connection	Pg 7 (for cable dia. 4-6mm)
protection class	IP 65 (with connector )

\* other voltages and wattages on request

**connector** (not included, must be ordered separately)

**code** Z10029

**FLO CONTROL**

Solenoid Valves



