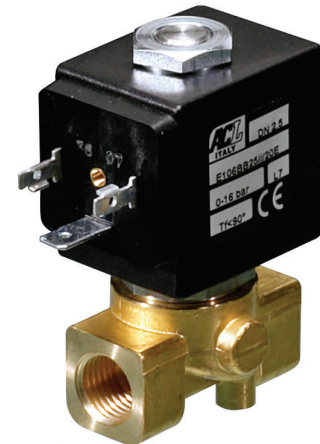


DESCRIPTION

Solenoid valve 2 way normally closed
direct acting poppet type

CONSTRUCTION

Body	Brass
Armature tube	AISI 303
Plunger and core	AISI 430FR
Springs	AISI 302
Seal material	NBR - FPM - EPDM - PTFE

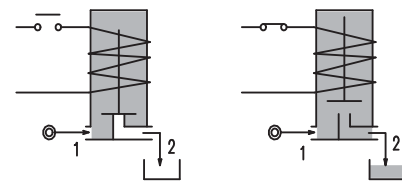
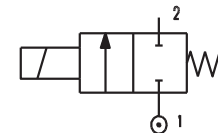


2

FEATURES

Maximum allowable pressure PS 100bar^④
 Maximum fluid viscosity 25cSt (mm²/s)
 Ambient temperature: from -10°C to +80°C according to the coil
 Universal mounting position

- OPTIONS:**
- Manual override
 - Electroless nickel plating
 - Stainless steel seat insert (up to Ø4.5)
 - Versions for use with industrial oxygen
 - UL[®] us certified coils



ON REQUEST: Versions for use with fluid temperature at -40°C

CODE ① ② ③	Connection G ISO 228	Orifice mm	Kv m ³ /h	Differential pressure bar			Nominal power			Coil		Seal ②	Temp. range °C
				Min	Max		AC Inrush	VA Holding	DC Watt	Series	Width		
					AC	DC							
E106... ..10///...	1/8"	1	0.04	0	80	80	20	15	10	2	30	NBR=B	-10 +90
E106... ..12///...		1.2	0.05	0	60	60							
E106... ..15///...		1.5	0.07	0	30	26							
E106... ..20///...		2	0.1	0	22	20							
E106... ..25///...		2.5	0.15	0	16	14							
E106... ..30///...		3	0.25	0	15	10							
E106... ..35///...		3.5	0.32	0	10	8							
E106... ..40///...		4	0.36	0	8	5							
E106... ..45///...		4.5	0.41	0	6.5	3.5							
E106... ..52///...	1/4"	5.2	0.47	0	4	1.8	40	30	27	5	36	EPDM=E	-10 +140
E106... ..64///...		6.4	0.64	0	3	1							
E106... ..10///...		1	0.04	0	100	100							
E106... ..12///...	1/8"	1.2	0.05	0	100	100	40	30	27	5	36	FPM=V	-10 +140
E106... ..15///...		1.5	0.07	0	80	80							
E106... ..20///...		2	0.1	0	50	40							
E106... ..25///...		2.5	0.15	0	35	33							
E106... ..30///...		3	0.25	0	25	24							
E106... ..35///...		3.5	0.32	0	20	19							
E106... ..40///...		4	0.36	0	16	15							
E106... ..45///...		4.5	0.41	0	14	13							
E106... ..52///...		1/4"	5.2	0.47	0	10							
E106... ..64///...	6.4		0.64	0	5	4.5							

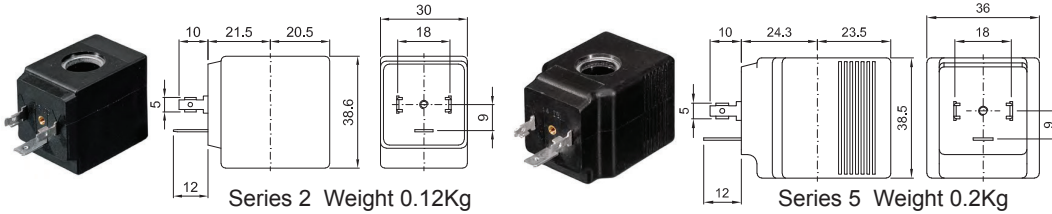
- ① Connection: A=1/8" , B=1/4"
- ② Seal Example: E106BB25///20E NBR seal
- ③ Coil Coil 230V 50/60Hz
- ④ Maximum allowable leakage <0.2NI/h
- ⑤ The maximum allowable pressure PS for steam is 9bar (gauge pressure) with PTFE seals and 2,5bar with EPDM seals

COILS ③	Alternating Current 50/60Hz (V)							Direct Current (V)			Electrical connection	Connectors
	12	24	48	110	220 230	240	380	12	24	48		
Series 2 Width 30	20A	20B	20C	20D	20E	20F	20G	200	201	202	DIN 43650A	PG9 code 10349000
Series 5 Width 36	52A	52B	52C	52D	52E	52F	52G	520	521	522	DIN 43650A	PG11 code 10349001

DESCRIPTION
 Insulation class
 Series 2 =F Series 5=H
 Voltage tolerance
 AC +15% -10%
 DC ± 10%
 Protection class
 IP65 with connector fitted
 IP00 without connector

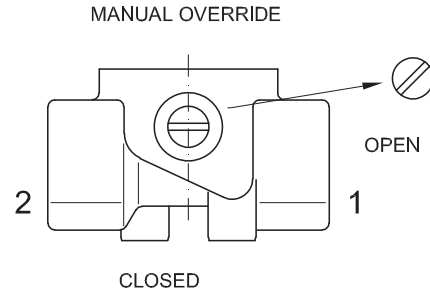
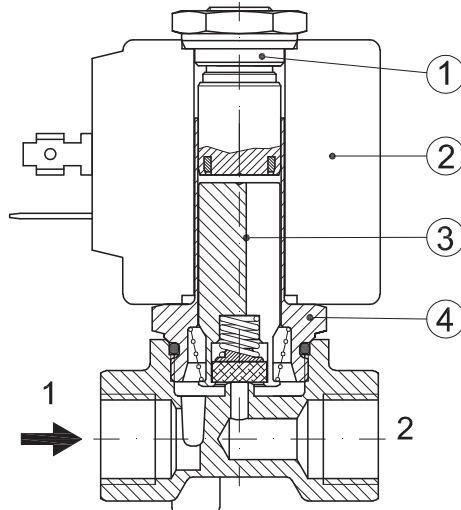
OPTIONS
 Class H insulation (series 2)
 Cable attached
 Special coil voltage
 Special coil powers
 us certified coils

(for coil details see section 8)

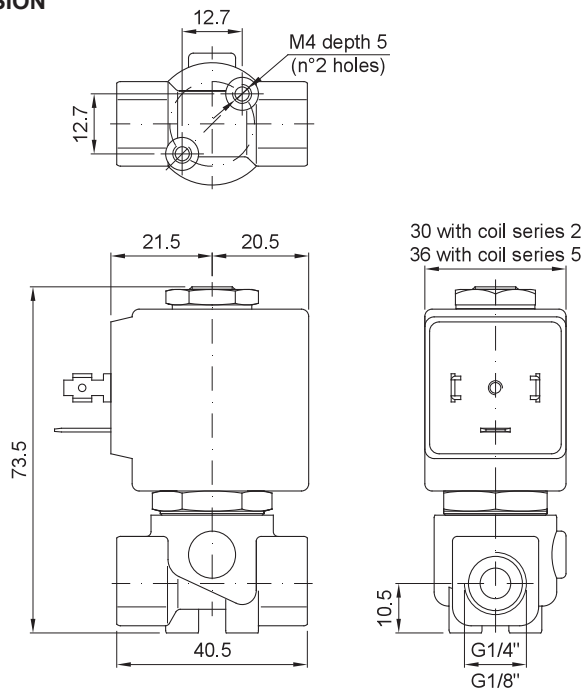


SPARE PARTS LIST

1. Coil fixing nut
2. Coil
3. Plunger
4. Armature tube assembly



OVERALL DIMENSION



Weight with coil series 2=0.30Kg
 Weight with coil series 5=0.38Kg

DESCRIPTION

Solenoid valve 2 way normally closed
direct acting poppet type

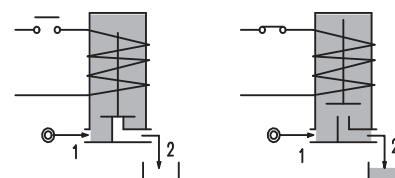
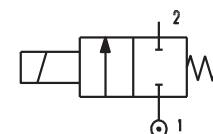
CONSTRUCTION

Body	Brass
Armature tube	AISI 303
Plunger and core	AISI 430FR
Springs	AISI 302
Seal material	NBR - FPM - EPDM - PTFE


2
FEATURES

Maximum allowable pressure PS 100bar^⑤
Maximum fluid viscosity 25cSt (mm²/s)
Ambient temperature: from -10°C to +80°C according to the coil
Universal mounting position

OPTIONS: Electroless nickel plating
Stainless steel seat insert (up to Ø4.5)
Versions for use with industrial oxygen
c us certified coils



ON REQUEST: Versions for use with fluid temperature at -40°C

CODE ① ② ③	Connection G ISO 228	Orifice mm	Kv m ³ /h	Differential pressure bar			Nominal power			Coil		Seal ②	Temp. range °C	
				Min	Max		AC Inrush	VA Holding	DC Watt	Series	Width			
					AC	DC								
E106... ..10///...	3/8"	1	0.04	0	80	80	20	15	10	2	30	NBR=B	-10 +90	
E106... ..12///...		1.2	0.05	0	60	60								
E106... ..15///...		1.5	0.07	0	30	26								
E106... ..20///...		2	0.1	0	22	20								
E106... ..25///...		2.5	0.15	0	16	14								
E106... ..30///...		3	0.25	0	15	10								
E106... ..35///...		1/2"	3.5	0.32	0	10								8
E106... ..40///...			4	0.36	0	8								5
E106... ..45///...			4.5	0.41	0	6.5								3.5
E106... ..52///...			5.2	0.47	0	4								1.8
E106... ..64///...	6.4	0.64	0	3	1									
E106... ..10///...	3/8"	1	0.04	0	100	100	40	30	27	5	36	FPM=V	-10 +140	
E106... ..12///...		1.2	0.05	0	100	100								
E106... ..15///...		1.5	0.07	0	80	80								
E106... ..20///...		2	0.1	0	50	40								
E106... ..25///...		2.5	0.15	0	35	33								
E106... ..30///...		3	0.25	0	25	24								
E106... ..35///...		1/2"	3.5	0.32	0	20								19
E106... ..40///...			4	0.36	0	16								15
E106... ..45///...			4.5	0.41	0	14								13
E106... ..52///...			5.2	0.47	0	10								9
E106... ..64///...	6.4	0.64	0	5	4.5									

① Connection: C=3/8" , D=1/2"

② Seal

Example: E106CB20///20E NBR seal

③ Coil

Coil 230V 50/60Hz

④ Maximum allowable leakage <0.2NI/h

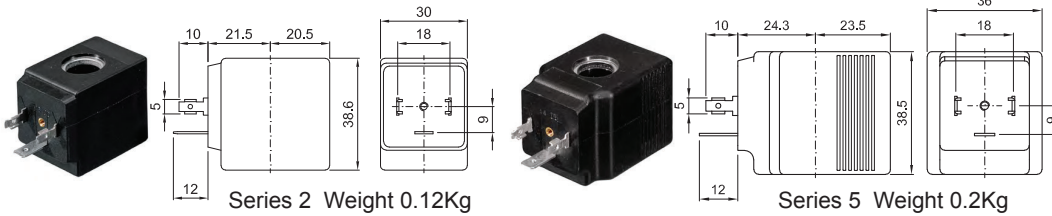
⑤ The maximum allowable pressure PS for steam is 9bar (gauge pressure) with PTFE seals and 2,5bar with EPDM seals

COILS ③	Alternating Current 50/60Hz (V)							Direct Current (V)			Electrical connection	Connectors
	12	24	48	110	220 230	240	380	12	24	48		
Series 2 Width 30	20A	20B	20C	20D	20E	20F	20G	200	201	202	DIN 43650A	PG9 code 10349000
Series 5 Width 36	52A	52B	52C	52D	52E	52F	52G	520	521	522	DIN 43650A	PG11 code 10349001

DESCRIPTION
 Insulation class
 Series 2 =F Series 5=H
 Voltage tolerance
 AC +15% -10%
 DC ± 10%
 Protection class
 IP65 with connector fitted
 IP00 without connector

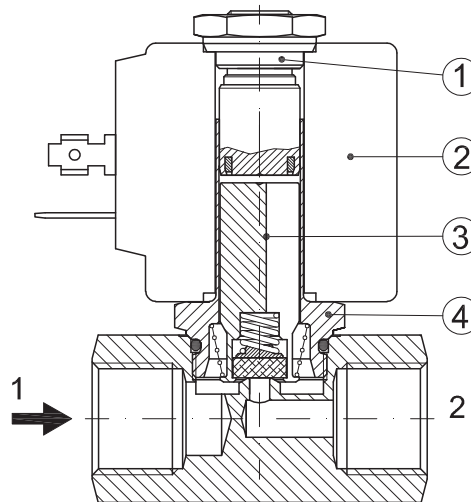
OPTIONS
 Class H insulation (series 2)
 Cable attached
 Special coil voltage
 Special coil powers
 US certified coils

(for coil details see section 8)

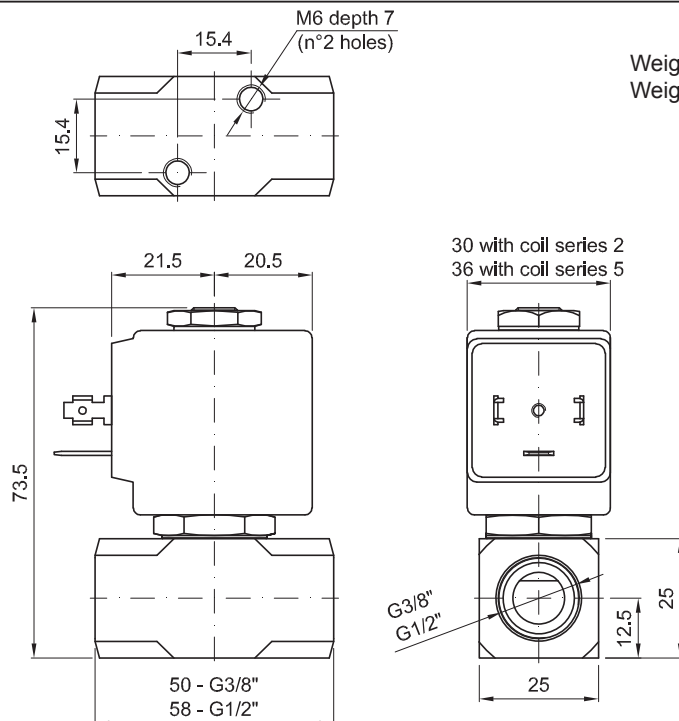


SPARE PARTS LIST

1. Coil fixing nut
2. Coil
3. Plunger
4. Armature tube assembly



OVERALL DIMENSION



Weight with coil series 2=0.36Kg
 Weight with coil series 5=0.44Kg

DESCRIPTION

Solenoid valve 2 way normally closed
direct acting poppet type.

With explosion proof coil certified for hazardous area:

ATEX II 2GDEx d IIC T6 or T5 or T4 Gb

Ex tb IIIC T80°C or T95°C or T130°C Db IP66

Tamb -40°C ÷ +35°C(T6) or +50°C(T5) or +60°C(T4)

CESI 03 ATEX 344 Extension No. 01/12

(other certifications e.g.EAC, INMETRO, CCOE etc. on request)



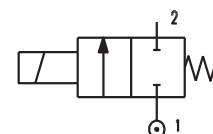
2

VALVE CONSTRUCTION

Body Brass
Seal material NBR - FPM - EPDM

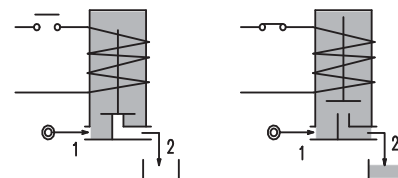
EXPLOSION PROOF COIL CONSTRUCTION

Housing Red colour alloy (painted with epoxy powder)
Electrical connection 1/2" NPT (M20x1.5 on request)



FEATURES

Maximum allowable pressure PS 100bar
Maximum fluid viscosity 25cSt (mm²/s)
Ambient temperature: -40°C ÷ +35°C(T6), +50°C(T5), +60°C(T4)
Mounting position with vertical coil above



- OPTIONS:** Stainless steel coil housing (see coil X6 section 8)
Manual override
Electroless nickel plating
Stainless steel seat insert (up to Ø4.5)

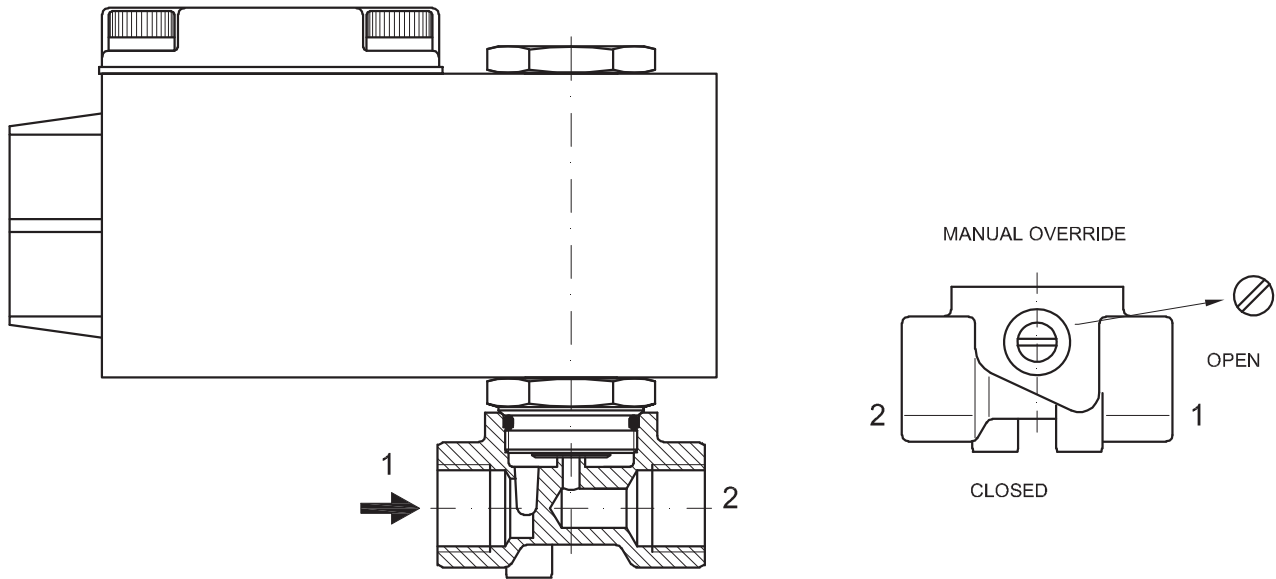
NOTE: The solenoid valve is suitable only with media that are **NOT** potentially explosive

CODE ① ② ③	Connection G ISO 228	Orifice mm	Kv m ³ /h	Differential pressure bar			Nominal power		Coil series	Seal	Temp. range °C	
				Min	Max		AC Holding	DC				
					AC	DC						
A106... ..10/1/...	1/8"	1	0.04	0	80	80	12 VA	8W	A6	NBR=B EPDM=E FPM=V	-10 +80	
A106... ..12/1/...		1.2	0.05	0	60	60						
A106... ..15/1/...		1.5	0.07	0	30	26						
A106... ..20/1/...		2	0.1	0	22	20						
A106... ..25/1/...		1/4"	2.5	0.15	0	16						14
A106... ..30/1/...			3	0.25	0	15						10
A106... ..35/1/...			3.5	0.32	0	10						8
A106... ..40/1/...	1/4"	4	0.36	0	8	5						
A106... ..45/1/...		4.5	0.41	0	6.5	3.5						
A106... ..52/1/...		5.2	0.47	0	4	1.8						
A106... ..64/1/...		6.4	0.64	0	3	1						

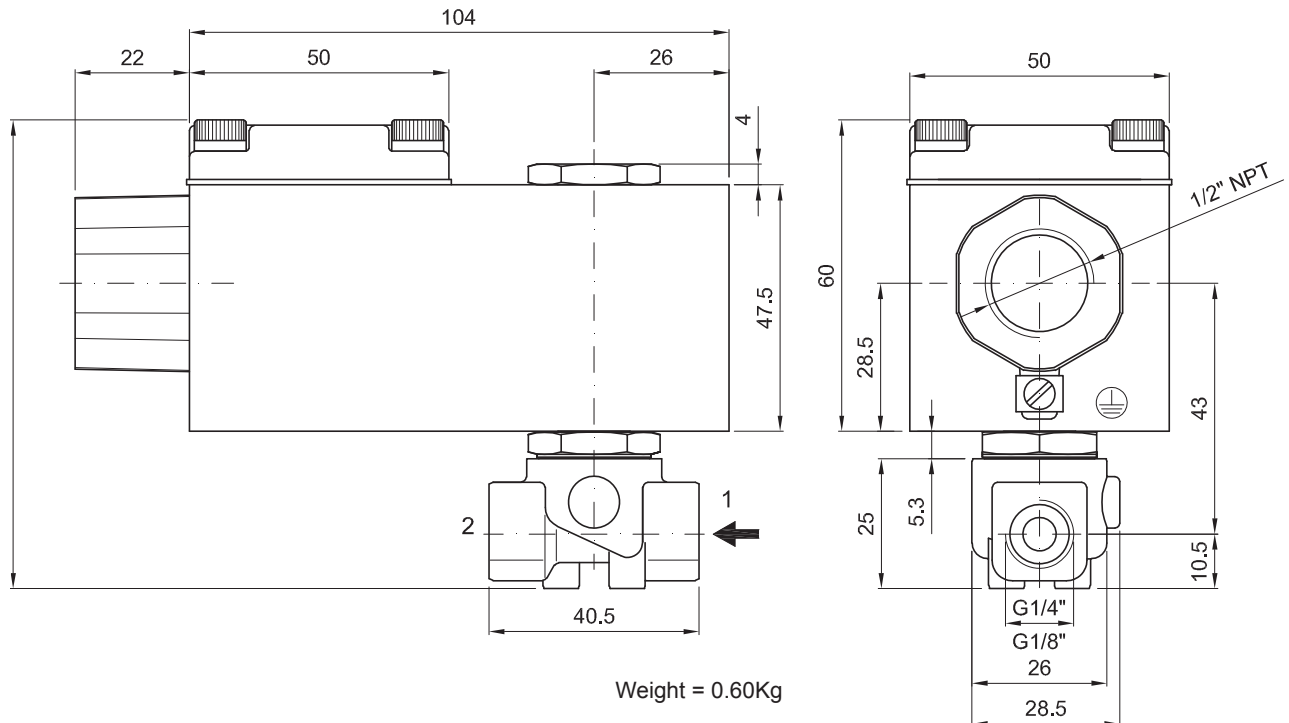
- ① Connection: A=1/8" , B=1/4"
② Seal
③ Coil

COILS ③	Alternating Current 50/60Hz (V)				Direct Current (V)			Electrical connection
	24	48	110	220 230	12	24	48	
Series A6	A6B	A6C	A6D	A6E	A60	A61	A62	1/2" NPT

DESCRIPTION
 Voltage tolerance
 AC +15% -10%
 DC ± 10%
 Protection class IP66
 Continuous service ED100%



OVERALL DIMENSION

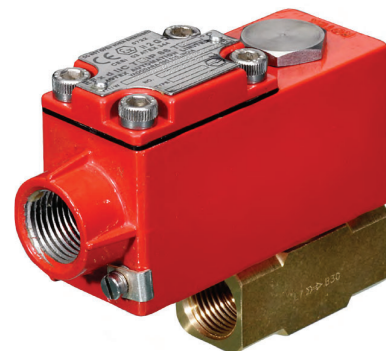


DESCRIPTION

Solenoid valve 2 way normally closed
 direct acting poppet type.
 With explosion proof coil certified for hazardous area:
ATEX II 2GDEx d IIC T6 or T5 or T4 Gb

Ex tb IIIC T80°C or T95°C or T130°C Db IP66
Tamb -40°C ÷ +35°C(T6) or +50°C(T5) or +60°C(T4)
CESI 03 ATEX 344 Extension No. 01/12

(other certifications e.g.EAC, INMETRO, CCOE etc. on request)



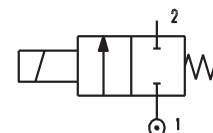
2

VALVE CONSTRUCTION

Body Brass
 Seal material NBR - FPM - EPDM

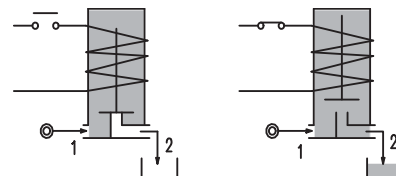
EXPLOSION PROOF COIL CONSTRUCTION

Housing Red colour alloy (painted with epoxy powder)
 Electrical connection 1/2" NPT (M20x1.5 on request)



FEATURES

Maximum allowable pressure PS 100bar
 Maximum fluid viscosity 25cSt (mm²/s)
 Ambient temperature: -40°C ÷ +35°C(T6), +50°C(T5), +60°C(T4)
 Mounting position with vertical coil above



OPTIONS: Stainless steel coil housing (see coil X6 section 8)
 Electroless nickel plating
 Stainless steel seat

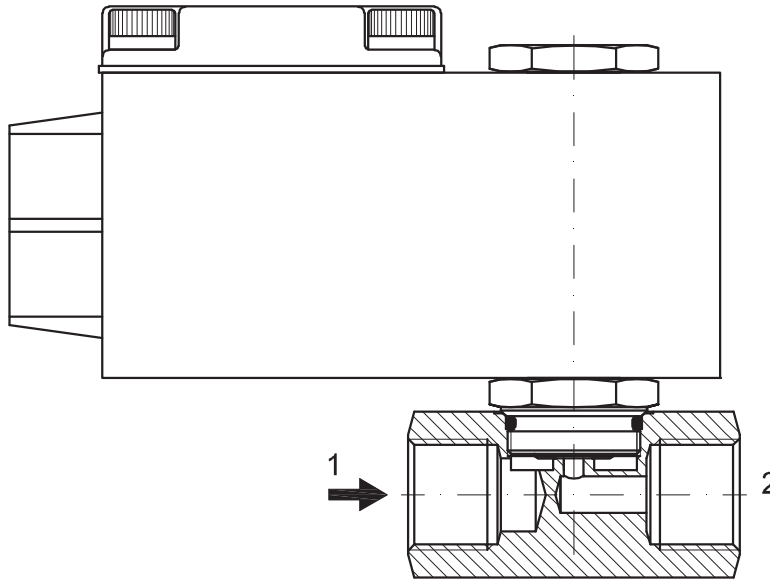
NOTE: The solenoid valve is suitable only with media that are **NOT** potentially explosive

CODE ① ② ③	Connection G ISO 228	Orifice mm	Kv m ³ /h	Differential pressure bar			Nominal power		Coil series	Seal	Temp. range °C	
				Min	Max		AC Holding	DC				
					AC	DC						
A106... ..10/1/...	3/8"	1	0.04	0	80	80	12 VA	8W	A6	NBR=B EPDM=E FPM=V	-10 +80	
A106... ..12/1/...		1.2	0.05	0	60	60						
A106... ..15/1/...		1.5	0.07	0	30	26						
A106... ..20/1/...		2	0.1	0	22	20						
A106... ..25/1/...		2.5	0.15	0	16	14						
A106... ..30/1/...		3	0.25	0	15	10						
A106... ..35/1/...		1/2"	3.5	0.32	0	10						8
A106... ..40/1/...			4	0.36	0	8						5
A106... ..45/1/...			4.5	0.41	0	6.5						3.5
A106... ..52/1/...			5.2	0.47	0	4						1.8
A106... ..64/1/...	6.4		0.64	0	3	1						

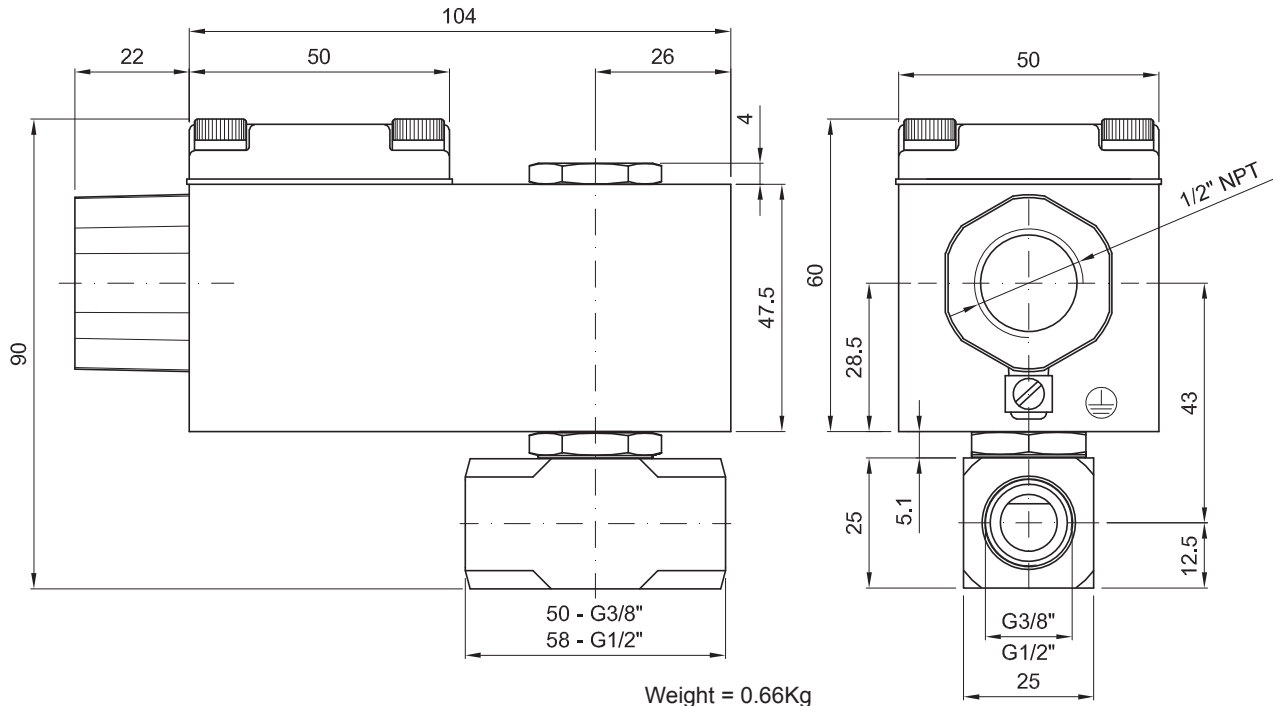
- ① Connection: C=3/8" , D=1/2"
- ② Seal
- ③ Coil

COILS ③	Alternating Current 50/60Hz (V)				Direct Current (V)			Electrical connection
	24	48	110	220 230	12	24	48	
Series A6	A6B	A6C	A6D	A6E	A60	A61	A62	1/2" NPT

DESCRIPTION
 Voltage tolerance
 AC +15% -10%
 DC ± 10%
 Protection class IP66
 Continuous service ED100%



OVERALL DIMENSION



DESCRIPTION

Drain valve

CONSTRUCTION

Solenoid valve series 106 with:

- Filter ball valve in chromium plated brass and stainless steel strainer, NBR seal
Connection : inlet G1/2", outlet G3/8" or G1/2"
- Timer ACL mod.11303000
- Connector DIN 43650A code 1034900A



2

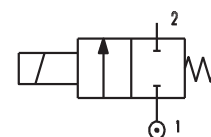
FEATURES

Maximum allowable pressure PS 50bar

Maximum fluid viscosity 25cSt (mm²/s)

Ambient temperature: from -10°C to +80°C according to the coil

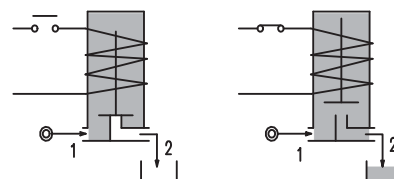
Protection class IP65



OPTIONS: Electroless nickel plating on the valve body

Overmoulded DIN cable connector

us certified coils



CODE ① ②	Connection G ISO 228	Orifice mm	Kv m ³ /h	Differential pressure bar			Nominal power			Coil		Seal ①	Temp. range °C
				Min	Max		AC Inrush	VA Holding	DC Watt	Series	Width		
					AC	DC							
S106BV30///...	1/4"	3	0.18	0	14	6	20	15	10	2	30	FPM=V	-10 +140
S106BV40///...		4	0.26	0	7	3							
S106C...30///...	3/8"	3	0.25	0	15	10	20	15	10	2	30	NBR=B	-10 +90
S106C...35///...		3.5	0.32	0	10	8							
S106C...40///...		4	0.36	0	8	5							
S106C...45///...		4.5	0.41	0	6.5	3.5							
S106D...30///...	1/2"	3	0.25	0	15	10	40	30	27	5	36	NBR=B	-10 +90
S106D...35///...		3.5	0.32	0	10	8							
S106D...40///...		4	0.36	0	8	5							
S106D...45///...		4.5	0.41	0	6.5	3.5							
S106C...30///...	3/8"	3	0.25	0	25	24	40	30	27	5	36	NBR=B	-10 +90
S106C...35///...		3.5	0.32	0	20	19							
S106C...40///...		4	0.36	0	16	15							
S106C...45///...		4.5	0.41	0	14	13							
S106D...30///...	1/2"	3	0.25	0	25	24	40	30	27	5	36	NBR=B	-10 +90
S106D...35///...		3.5	0.32	0	20	19							
S106D...40///...		4	0.36	0	16	15							
S106D...45///...		4.5	0.41	0	14	13							

① Seal

② Coil

Example: S106CB30///20E NBR seal

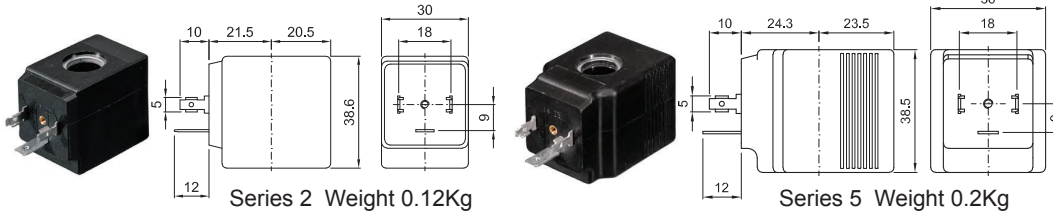
Coil 230V 50/60Hz

COILS ②	Alternating Current 50/60Hz (V)							Direct Current (V)			Electrical connection	Connectors
	12	24	48	110	220 230	240	380	12	24	48		
Series 2 Width 30	20A	20B	20C	20D	20E	20F	20G	200	201	202	DIN 43650A	PG9 code 10349000
Series 5 Width 36	52A	52B	52C	52D	52E	52F	52G	520	521	522	DIN 43650A	PG11 code 10349001

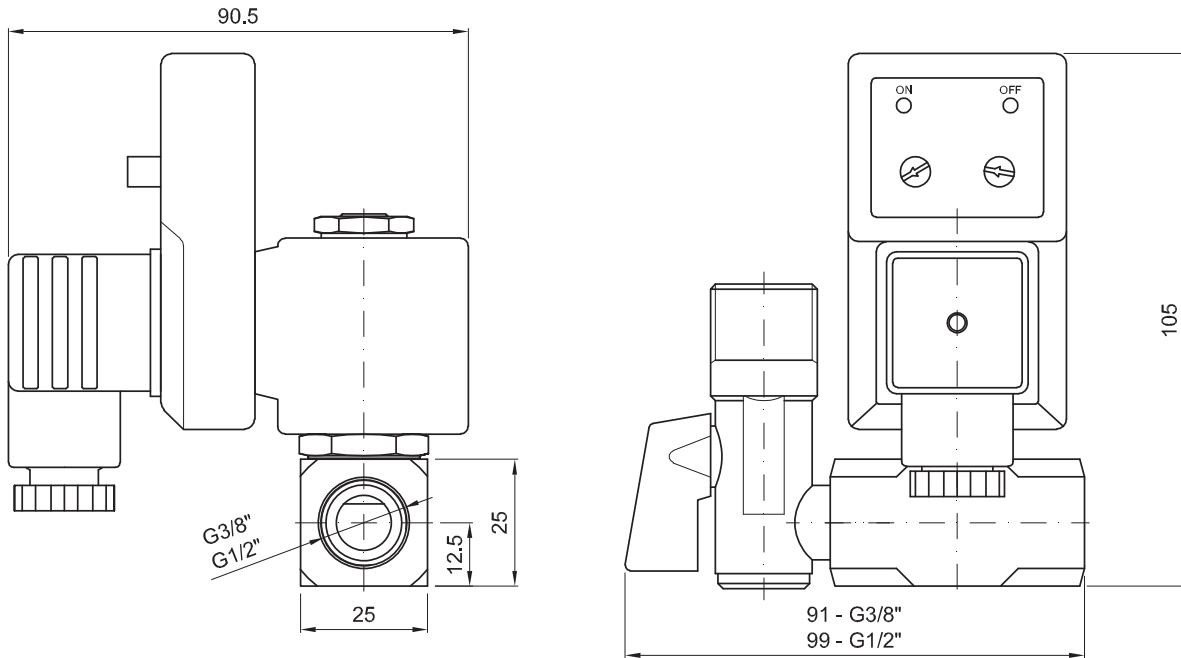
DESCRIPTION
 Insulation class
 Series 2 =F Series 5=H
 Voltage tolerance
 AC +15% -10%
 DC ± 10%
 Protection class
 IP65 with connector fitted
 IP00 without connector

OPTIONS
 Class H insulation (series 2)
 Cable attached
 Special coil voltage
 Special coil powers
 c US certified coils

(for coil details see section 8)



OVERALL DIMENSION



Weight with coil series 2=0.52Kg
 Weight with coil series 5=0.60Kg

DESCRIPTION

Solenoid valve 2 way normally closed
direct acting poppet type

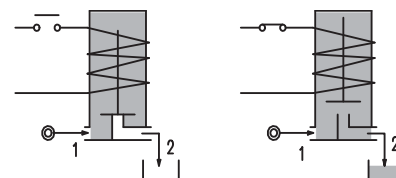
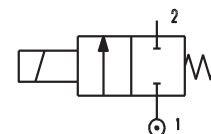
CONSTRUCTION

Body	Brass
Armature tube	Brass
Plunger and core	AISI 430FR
Springs	AISI 302
Seal material	FPM



FEATURES

Maximum allowable pressure PS 50bar
Maximum fluid viscosity 25cSt (mm²/s)
Ambient temperature: from -10°C to +80°C according to the coil
Universal mounting position

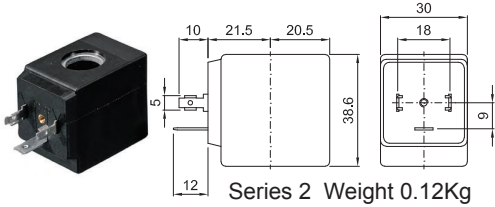


CODE ②	Connection G ISO 228	Orifice mm	Kv m ³ /h	Differential pressure bar			Nominal power			Coil		Seal	Temp. range °C
				Min	Max AC DC		AC Inrush	VA Holding	DC Watt	Series	Width		
W106BV30///...	1/4"	3	0.18	0	14	6	20	15	10	2	30	FPM=V	-10 +140
W106BV40///...		4	0.26	0	7	3							

② Coil

COILS ②	Alternating Current 50/60Hz (V)							Direct Current (V)			Electrical connection	Connectors
	12	24	48	110	220 230	240	380	12	24	48		
Series 2 Width 30	20A	20B	20C	20D	20E	20F	20G	200	201	202	DIN 43650A	PG9 code 10349000

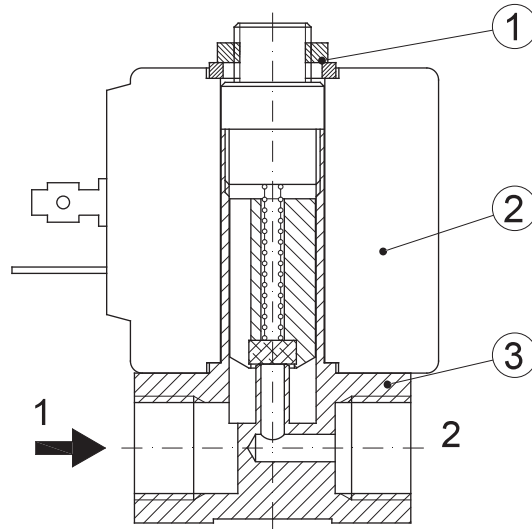
DESCRIPTION
 Class F insulation
 Voltage tolerance
 AC +15% -10%
 DC ± 10%
 Protection class
 IP65 with connector fitted
 IP00 without connector
 Continuous service ED100%



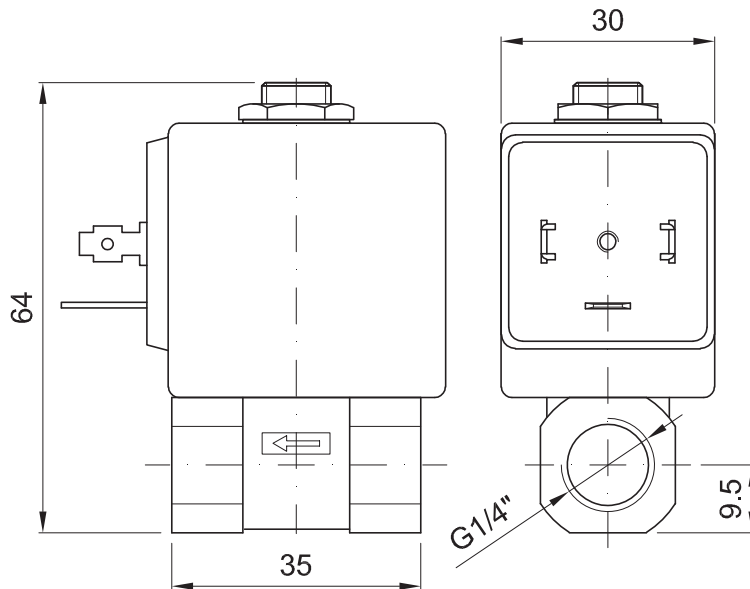
OPTIONS
 Class H insulation
 Cable attached
 Special coil voltage
 Special coil powers

SPARE PARTS LIST

1. Coil fixing nut
2. Coil
3. Valve



OVERALL DIMENSION



Weight=0.22Kg