



# KEIM GRANITAL<sup>®</sup>

---

THE ORIGINAL.  
FIRST-CLASS SILICATE EMULSION PAINT.



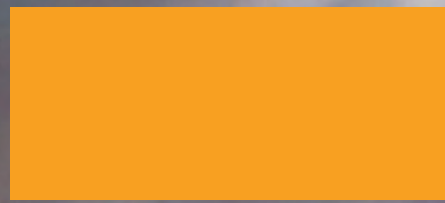
Top quality

Protects built values

Non-combustible

Colour-stable

OBVIO



Permeable

Mineral

UV-resistant

Long-living

# THE ANSWER IS DURABLE AND MINERAL

KEIM Granital stands for high-class quality and sustainable protection for built values.  
Highly durable, wide colour range and particularly friendly for the environment.  
KEIM Granital is an investment in the sense of economic and ecological foresight.







# KEIM GRANITAL® – TOP-NOTCH QUALITY FOR MINERAL SUBSTRATES



## TOP CLASS SILICATE EMULSION PAINT

Very long service life, ideal values from the standpoint of building physics, absolutely light-resistant, UV-stable, economical, environmentally sound and easy application. Over 140 years of expertise and knowhow in research and development of mineral products for building protection are put into KEIM Granital. Basis is the mineral principle of the so-called "silicification". Silicate paints don't form a film on the surface when applied, but they form an insoluble bond with the substrate by a chemical reaction. Countless historic buildings testify impressively the unequalled longevity and vibrancy even after decades. Facades coated with KEIM Granital age gracefully!

## RESPONSIBILITY FOR HUMAN AND NATURE

Sensational durability of the coating extends the renovation interval cycles. This does not only save material, energy and costs – it also has a lower impact on the environment.

## PERFECT FORMULATION

KEIM Granital combines economy with environmental soundness and aesthetics: High-quality raw materials like liquid potassium silicate as binding agent, mineral fillers and absolutely light-resistant, inorganic colour pigments guarantee unequalled durability and colour brilliance. Minimal water absorption and high water vapour permeability provide a low soiling tendency, natural protection against algal and fungal infestation, plus, a lifespan that is about twice as long than common, non-mineral coatings.

**The mineral principle assures  
top-class quality for a lifetime.**

# VERY LARGE COLOUR SELECTION FOR CREATIVE SOLUTIONS

## COLOUR-STABLE OVER A LONG TERM

The appearance of a building is significantly featured by its facade, provided that the colour shade keeps the original beauty and intensity for a long time. For this situation KEIM Granital provides the decisive advantage and ensures long-lasting colour-resistant and clean facades: High-class light-resistant pigments resist sun and rain and guarantee permanently brilliant colours.

An investment that pays off – because facades coated with KEIM Granital have most definitely even after years the same colour shade as on the day they were just painted!

## DIVERSITY OF COLOUR EFFECT

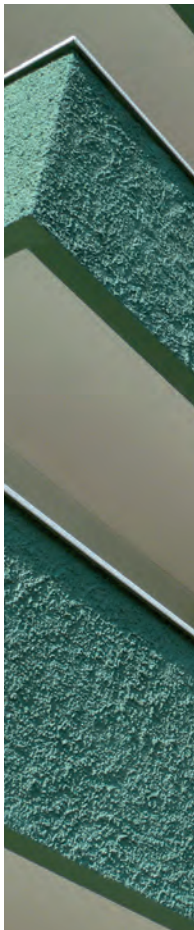
KEIM Granital with its perfectly coordinated formulas is available in full-tone colours and more than 270 standard shades and provides almost unlimited options to perform with various application techniques demanding colour concepts and creative facade designs.

## WORLDWIDE PROVEN

From Finland to South Africa, from California to China – numerous buildings around the globe give impressive proof what makes KEIM Granital so unique: Uncompromising mineral quality for all climate zones.



**Sustainability is a must and  
applies also for the colour  
shade! Learn more at  
[www.keim.com](http://www.keim.com)**













# EXEMPLARY RENOVATION WITH KEIM GRANITAL®

## PREMIUM QUALITY FOR HISTORIC ARCHITECTURE IN BERLIN

The Palace of the Princesses located at "Unter den Linden" Boulevard in Berlin has an eventful history: Once built as residence for various members of the Prussian ruling family, then used as museum and later as very popular opera house café. The oldest wing of this building, also known as Opera Palace (Opernpalais), is from the year 1730 and was refurbished by Karl Friedrich Schinkel one hundred years later. A private investor bought the historic city palace in 2014 and commissioned the British star architect David Chipperfield with the master plan for renovation and conversion. Responsible for the colour design of the facade were the renowned restorers from Howahl Spies in Berlin.



Ralph Spies, graduate restorer (FH),  
Howahl Spies Restauratoren

## INTERVIEW

### Mr. Spies, why do you trust the mineral products from KEIM?

We from Howahl Spies Restauratoren work a lot with KEIM products and we like them especially. KEIM is often times specified by the monument protection authorities, and plus, we are convinced by the excellent quality, reliability and service.

### Was there a particular requirement when renovating the Opera Palace in Berlin?

The architect specified a facade coating with KEIM Granital as three-layer structure: Base coat with KEIM Granital-Grob, tinted intermediate coat with almost opaque KEIM Granital and a semi-transparent top coat with KEIM Granital. To keep the lively look of the facade, we used a wall brush and applied the paints with a subtly shimmering and slightly vibrant interplay of the colours. Beforehand, the colours were sampled and defined based on the KEIM colour swatches.

It was so easy to reorder the paint material thanks to the colour code with a 100% colour shade guarantee! That worked really fantastic. We could order the paint in partial quantities, and like always, we were satisfied with the application quality and efficiency



A cream-coloured shade was selected for wall surfaces and stucco fillings and light grey for the window surrounds and pilasters.

**"It is so important to have a reliable partner like KEIM at your side, especially, when working with valuable building material."** Ralph Spies



# KEIM CONTACT-PLUS – THE PROBLEM SOLVER



Weathered dispersion paint



Base coat/bridging of the existing coating  
with KEIM Contact-Plus



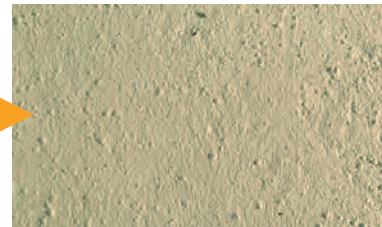
Intermediate or top coat with KEIM Granital



Existing render with cracks



Base coat/crack-filling with KEIM Contact-  
Plus-Grob



Intermediate or top coat with KEIM Granital

## FOR DIFFICULT SUBSTRATE

KEIM Contact-Plus is a perfect problem solver! This renovation bridging coat is the preparation on sound, organically bound or mineral existing coatings for a refinish with KEIM Granital if the existing coatings cannot be removed or if the removal is too cost-intensive or would affect the environment.

KEIM Contact-Plus products are silicate based, closing base coatings according to DIN 18363 par. 2.4.1. with pure acrylate additive, glass fibres and high-quality fillers with balanced grain sizes and shapes.

## KEIM CONTACT-PLUS

KEIM Contact-Plus has optimal crack-bridging and filling properties thanks to the selected fibres and fillers. Existing differences in the texture surfaces, shrinkage and fine hairline cracks up to a width of maximal 0.5 mm can be easily levelled.

## KEIM CONTACT-PLUS-GROB

This highly filled renovation base coat provides also a perfect bridging on synthetic resin bound or mineral existing coatings and/or equalises structural differences in the substrate and closes fine, non-moving cracks that are up to 1.0 mm wide.



**KEIM Contact-Plus – for easy  
bridging of existing coatings.**



# KEIM GRANITAL® PAINT SYSTEM

## KEY FEATURES

- Unequalled durability
- Excellent structural properties
- UV-stable
- Optimally coordinated system components
- Worldwide proven
- First "natureplus" certified facade paint



**SENTINEL HAUS  
INSTITUT**

## SYSTEM COMPONENTS AND TECHNICAL DATA

System	KEIM GRANITAL-SYSTEM	
Product name	KEIM Granital/KEIM Granital-Grob	KEIM Contact-Plus/KEIM Contact-Plus-Grob
W-value	Class III, $w < 0.1 \text{ kg/m}^2\text{h}^{0.5}$	
Sd-value	Class I, $s_d \leq 0.01 \text{ m}$	Class I, $s_d \leq 0.02 \text{ m}$
Colour stability*	A1	
Technology	Silicate technology	
Classification	Ready-to-use, water-repellent, silicate emulsion paint according to VOB/C DIN 18363 par. 2.4.1.	

\* Colour code according to the BFS Technical Information No. 26

## COATING STRUCTURE WITH THE CORRESPONDING SYSTEM COMPONENTS

Coating structure	Standard coating structure for crack-free, mineral substrates.	Slightly filling coating structure with filled silicate emulsion paint as base coat onto difficult substrates (e.g. with hairline cracks and/or slight textural differences).	Medium filling coating structure with highly filled renovation base coat to bridge synthetic resin bound existing coatings and/or to close cracks. Max. grain size 0.5 mm.	Highly filling coating structure with highly filled renovation base coat to bridge synthetic resin bound existing coatings and/or to close cracks. Max. grain size 1.0 mm.
Base coat	KEIM Granital	KEIM Granital-Grob low filling effect	KEIM Contact-Plus medium filling effect	KEIM Contact-Plus-Grob high filling effect
Top coat (undiluted)	KEIM Granital	KEIM Granital	KEIM Granital	KEIM Granital
Dilution for the base coat	KEIM Fixativ, KEIM Spezial-Fixativ			





KEIMFARBEN GMBH

Keimstraße 16/86420 Diedorf/Tel. +49 (0)821 4802-0/Fax +49 (0)821 4802-210

Frederik-Ipsen-Straße 6/15926 Luckau/Tel. +49 (0)35456 676-0/Fax +49 (0)35456 676-38

[www.keim.com/info@keimfarben.de](http://www.keim.com/info@keimfarben.de)

KEIM. COLOURS FOR EVER.