

framkallar bxc4 samma fortsättning genom självblockad av c4. Bivarianten Kxc4 tillför värde genom de ändrade kontrollerna av d2+e2. Därutöver finns en rad icke-tematiska försök som kanske inte är så märkvärdiga men som också de utnyttjar ställningens resurser väl.

1.Sb4+? Kxc4!

1.Tc5? hot 2.Sb4+ Txb4# men 1. – bxc4!

1.Te3+? dxe3 2.Sb4+ Txb4# men 1. – Kxc4!

1.Df3+? Kxc4 2.De2+ d3! (Td3#?)

1.Dg8? hot 2.Sb4+ men 1. – e6!

1.Lxd4 hot 2.Sb2+ Txb2#

1. – bxc4 2.Sb4+ Txb4#

1. – Kxc4 2.De2+ Td3#

6 Omnämmande 12405 – Milomir Babić

Jag ser inga gemensamma motiv eller strategiska poänger, men två helt olika, långa lösningar med detta begränsade material är en god prestation.

1.Te4 Lg8 2.Td4+ Ld5 3.Lg4 Kc5 4.Tb4 Kd6 5.Dd7+ Kc5 6.De7+ Kxc6 7.Ld7+ Kc7 8.Tb7+ Lxb7#

1.Sa5 Lg8 2.Sc4+ Lxc4 3.Dd8+ Kc6 4.La4+ Lb5 5.Td2 Lxa4 6.Df6+ Kc7 7.Dd6+ Kc8 8.Dc6+ Lxc6#

Stockholm juni 2023

Kjell Widlert

Dom Springaren h#2 2021

It was an honor to be invited to judge the short helpmates annual tourney of the magazine. Knowing that *Springaren* is a popular outlet for helpmate composers, I was expecting the tourney to be strong; I was glad with the good number of originals (56 in total), but in terms of quality I dare say I was rather disappointed. Many compositions lacked strategy and interesting play, while other featured familiar ideas. Let me point out some remarks on a few of them:

14747 (Engström): Very familiar knight captures that have been shown with additional pins, see for instance WID 16952, ID 86337, ID 119309, ID 119362, ID 162306, ID 165201, ID 193053, ID 218550, ID 287799.

1736: More interesting are WID 144379, 183229, 183353.

14806 (Grinchenko): Compare to the superior *Mario Parrinello, Springaren 2007* (WID 244102) which has direct pins by the rook too with clever differentiation of the black pieces annihilating a pawn and then blocking a square.

14807 (Pankratiev & Gavryliv): One pair of solutions is well-known, the other lacks balance.

1748 (Kaproš): Economic Zilahi with echo model mates, but a bit thin. In fact, this pair of solutions is one of the three (!) pairs presented in the fantastic TF-helpmate *Michal Dragoun & Ladislav Salai Jr, 1 Pr Šachová skladba 2013* (WID 494845, E96 FIDE Album 2013-15).

14927 (Engström): Too many move repetitions spoil the overall impression.

14929 (Pankratiev): Anticipated by *Almiro Zarur, in memoriam E. Berlingozzo, Jornal do Solucionismo 2000* (WID 162101).

14931 (Pankratiev & Antipin): Economic cyclic Zilahi with model mates, but unbalanced play and untidy twinning.

14933 (Pankratiev): Too many cookstoppers.

14935 (Vasyutjko): Weak presentation of a familiar idea. Here the move Td6 interferes the B-line as well and the mutual interferences of the bDd8/wTh6 do not occur on the same square.

1774 (Jonsson): There are 10 h#2s in the WinChloe database with this setup of white pieces; Benedek seems to be the first in presenting this little idea back in 1980; others (Husserl, 1990 and Loustau, 1994) managed to show it even in miniature using a wK-shift twinning. The closest to 1774 is a rendering by Alaikov in *Thema Danicum 2002* (WID 613879) with the added feature that mates occur on bK's initial square.

Sadly, I could not find a problem worthy of a prize. I propose the following ranking:

1. Hon. Mention: 14876 (Mykola Vasyuchko)

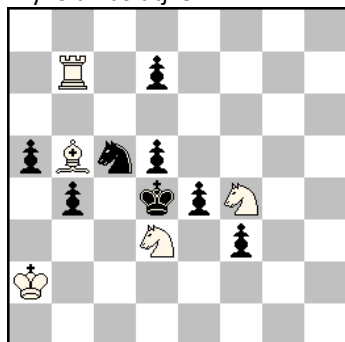
1.Kc3 Sxb4 2.Kxb4 Sxd5#

1.Se6 Sxd5 2.Kxd5 Txd7#

1.d6 Sxc5 2.Kxc5 Se6#

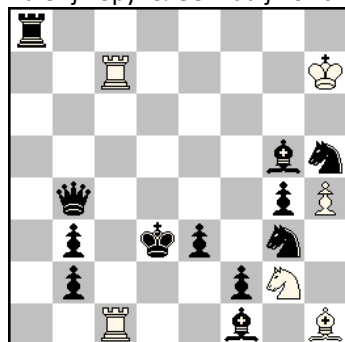
Three Kniest captures/sacrifices with Chumakov and three model mates in decent construction.

1 HO 14876
Mykola Vasiutjko



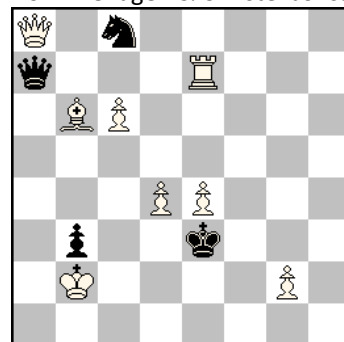
h#2 3 lösn

2 HO 14751
Valerij Kopyl & Gennadij Koziura



h#2 2 lösn

3 HO 1750
Rolf Wiehagen & Christer Jonsson



h#2 2 lösn

2. Hon. Mention: 14751 (Valerij Kopyl & Gennadij Koziura)

1.Le2 Se1+ 2.Dxe1 Txd7#

1.Se2 Sf4+ 2.Dxf4 Td1#

Depending on which black piece blocks the flight preventing one of the two potential mates by the rooks, the white knight selects the appropriate square to play in order to drive the black queen away from the mating lines. An interesting concept of white hide-away sacrifices.

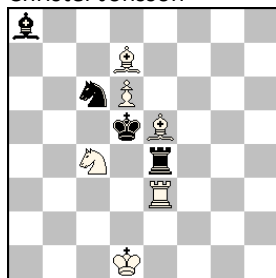
3. Hon. Mention: 1750 (Rolf Wiehagen & Christer Jonsson)

1.Dxb6 (Sxb6?) Da5 2.Kxd4 Dc3#

1.Sxe7 (Dxe7?) Df8 2.Kxe4 Df3#

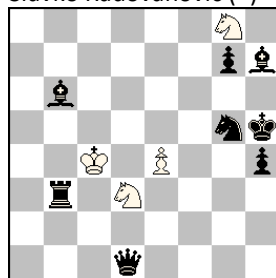
The pawn batteries do not work; instead bD/S capture the rear pieces to provide a flight to the king. The alternative false captures have visual appeal only (there is no dual avoidance), as the B1 moves should open anyway a gate for the wD.

1 Omn 14749
Christer Jonsson



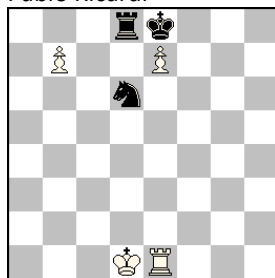
h#2 4 lösner

2 Omn 14810
Slavko Radovanović (†)



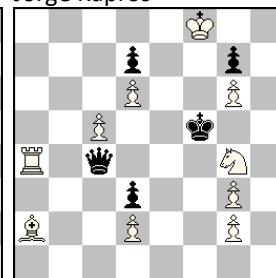
h#2 2 lösner

3 Omn 1761
Pablo Ricardi



h#2 2 lösner

4 Omn 1769
Jorge Kapros



h#2 4 lösner

1. Commend: 14749 (Christer Jonsson)

1.Sd4 Lb5 2.Txe5 Txe5#

1.Sb4 Lc6+ 2.Kxc4 Tc3#

1.Sa5 Tb3 2.Sxc4 Tb5#

1.Txc4 Le8 2.Tc5 Lf7#

Vivid play, involving a capture of a white piece in each solution, and four model mates with 10 pieces only!

2. Commend: 14810 (Slavko Radovanović (†))

1.Kg6 Kd5 2.Dh5 Se5#

1.Lf5 e5 (Kd5?) 2.Lg4 Sf4#

Nice white tempo moves in an airy Meredith setting.

3. Commend: 1761 (Pablo Ricardi)

1.Ta8 bxa8=L 2.Sf7 Lc6#

1.Kd7 e8=S 2.Sc8 b8=S#

Well-crafted miniature with three white promotions.

4. Commend: 1769 (Jorge Kapros)

1.Df4 Tc4 2.Ke6+ Txf4#

1.De6 Lc4 2.Ke4 Lxe6#

1.Db4 Le6+ 2.Ke4 Txb4#

1.Db3 Tf4+ 2.Ke6 Lxb3#

The pair of solutions with the reciprocal battery mates is known from *Mark Erenburg & Ofer Comay, Commend Quick Tourney Dresden 2017* (WID 682197), the added pair with the gate openings is welcome even if not sensational.

Harry Fougiaxis

FIDE International Judge

Athens, February 2023

Red. anm.: WID = WinChloe-ID = nummer i WinChloe-databasen

Participating compositions:

No. 157 (March 2021): 14743-14752, 1736, 1737, 1743 (=13)

No. 158 (June 2021): 14805-14813, 1746, 1748, 1750, 1753 (not original) (=12)

No. 159 (September 2021): 14870, 14871 (=14805), 14872 (=14806), 14873-14878, 1761, 1762, 1764, 1765 (=11)

No. 160 (December 2021): 14923-14937, 1769, 1770, 1774, 1775, 1776 (=20)