

## Dom Springaren h#1,5-2 2022

In the period 2022, 28 problems by 20 composers from 10 countries were published.

I would like to thank Rolf Wiehagen for checking the award-worthy problems for predecessors and Franz Pachl for his help in the decision-making process.

The improvements **14982v** (Eligiusz Zimmer) by Rolf Uppström and **15153v** (Vladimir Koci & Dmitri Grintjenko) were considered.

The version Danstrup from **15091** (Rolf Uppström) was not taken into account because the symbolism is missing.

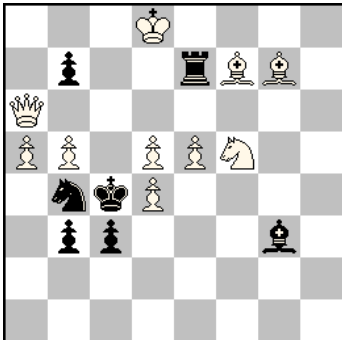
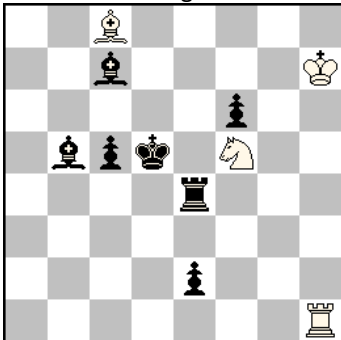
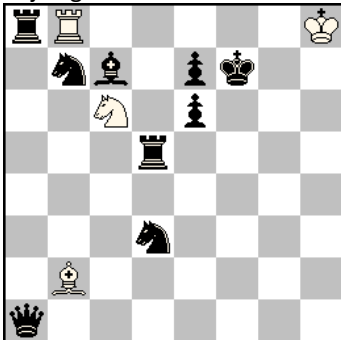
**14980** by Mykola Vasiutjko: I like P1235958 by Zoran Janev, 2841 Best Problems 62 04/2012, better because of the pinning mates and the alternating capture of the pinned piece.

Predecessors were involved in the following problems:

**14976** by Kaj Engström: Anticipated by P0537224, Christopher John Feather, 24 Moultings 1 10/1990.

**15089** by Karol Mlynka †: P0507864, Ladislav Salai jr. 4642 Magyar Sakkelet 12/1982, shows the same four solutions with four bB promotions.

I have chosen the following ranking:

1 Pr 15090 Abdelaziz Onkoud	2 Pr 15155 L Salai jr, E Klemanić, L Packa & M Dragoun	1 HO 15040 Kaj Engström
		
h#2 2 lösn	h#2 3 lösn	h#2 2 lösn

### 1st Prize: 15090 by Abdelaziz Onkoud

Twice an active sacrifice by black and ambush moves by wQ/wB. The wPe5 must be captured to clear the way (annihilation) and bBg3/bRe7 exchange their function, model mates. Thematically the most demanding helpmate and clear winner.

1.R×e5 Bg6 2.Re3 S×e3#  
1.B×e5 Qg6 2.Bd6 S×d6#

### 2nd Prize: 15155 by Ladislav Salai jr, Emil Klemanić, Ladislav Packa & Michal Dragoun

A very harmonious helpmate with a consistent strategy. Cyclic change of function of the three black officers: the first makes a critical move to an active block via a square that the bK will enter on the next move, the second is a passive block piece, the third is not used in the respective solution. A Meredith with wide play in excellent construction.

1.Rb4 Rh3 2.Kc4 Be6#  
 1.Bf4 Rc1 2.Ke5 Rxc5#  
 1.Bd7 Rb1 2.Kc6 Bb7#

**1st Honourable Mention: 15040** by Kaj Engström

In the PDB there were some comparative problems with anticritical moves by wR/wB, but none with anticritical Pelle moves and a damaging Bristol-effect to the mating squares. Since the Pelle-effect does not come into play, one should have avoided it and aimed for model mates, e.g. wK to h3, b) bPe6-g6.

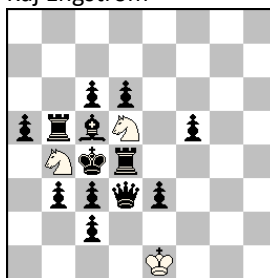
1.Rd6 Bg7 2.Sb2 Se5#  
 1.Sd6 Rg8 2.Bb8 Sd8#

**2nd Honourable Mention: 14977** by Kaj Engström

A HOTF with four model mates. Unfortunately, apart from the Zilahi in solutions I) and III), there are no change of functions by the wSS in solutions II) and IV).

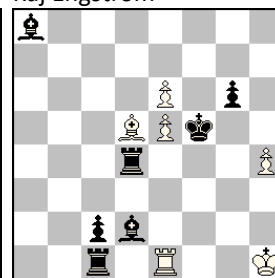
1.Qe2+ Kxe2 2.axb4 Sxe3#  
 1.Re4 Sb6+ 2.Kd4 Sxc6#  
 1.cxd5 Sxc2 2.Rb4 Sa3#  
 1.Bb6 Sxe3+ 2.Kc5 Sa6#

2 HO 14977  
 Kaj Engström



h#2 4 lösn

3 HO 15039  
 Kaj Engström



h#2 2 lösn

**3rd Honourable Mention: 15039** by Kaj Engström

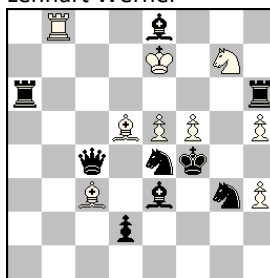
A good analogy. Rook and bishop move to the same square. Grimshaw with Pelle moves liberations by Umnov moves and function exchange between white and black. It is a pity that there is no second model mate.

1.Bf4 Bg2 2.Rd5 Bh3#  
 1.Rf4 Rg1 2.Be1 Rg5#

**4th Honourable Mention: 15159** by Lennart Werner

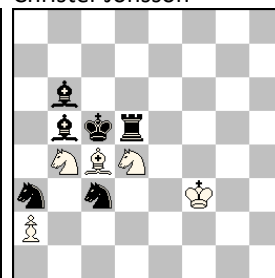
Interesting strategy. So that White can give mate on e6 and d2, both black rooks in a) and the black bishop in b) must be interfered. The failing attempts 1.Bc6 and 1.Ba7 with uniform damage (the bSe4 blocks a line of the white rook) enhance the problem. If you place the wBd5 on a8 and replace the bQ with an bP, the twinning is unnecessary and, in both cases, the wPh5 is superfluous.

4 HO 15159  
 Lennart Werner



h#2 B: Ld5>a8

1-2 Omn 15151  
 Kaj Engström &  
 Christer Jonsson



h#2 3 lösn

a) 1.Bg6 Rf8 2.Sd6 Se6# (not 1.Bc6? Rf8 2.Sf6 Se6 3.Kxf5!)  
 b) 1.Bg1 Rb5 2.Sf2 Bxd2# (not 1.Ba7? Rb5 2.Sc5 Bxd2 3.Kxe5!)

**1st-2nd Commendation: 15151 and 15152** by Kaj Engström & Christer Jonsson

Both problems show cyclic Zilahi with self-blocks and model mates in economic form as Meredith.

In 15151 Bc4, Sd4 and Sb4 are captured on one row and mate.

1.Sxc4 a3 2.Rd6 Sb3# 1.Kxd4 Bxb5 2.Bc5 Sc6# 1.Kxb4 Sc6+ 2.Ka4 Bb3#

In **15152** Sc6, Re8 and Bb7 are captured and mate.

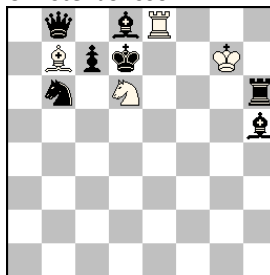
1.c×d6 Ba6 2.Bc7 Bb5#  
1.B×e8 Bc8+ 2.Ke7 Sf5#  
1.Q×b7 Sf7 2.Kc8 R×d8#

**3rd Commendation: 15153v**  
by Vladimir Koci & Dmitri Grintjenko

The improvement has been successful. Nice Meredith with two model mates and a pinned black queen.

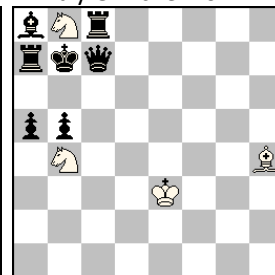
1.Kb6 Bd8 2.Bb7 Sd7#  
1.Kxb8 Bg3 2.Rb7 Sc6#

1-2 Omn 15152  
Kaj Engström &  
Christer Jonsson



h#2 3 lösn

3 Omn 15153v  
Vladimir Koci &  
Dmitry Grinchenko



h#2 2 lösn

I would like to thank Kjell Widlert and Christer Jonsson for their confidence and to assign to me the job as Judge, and I congratulate all those honoured.

Rainer Kuhn, Germany, April 2024

## *Dom* Springaren h#n 2022

In the period 2022, 39 problems by 15 composers from 13 countries were published.

I would like to thank Rolf Wiehagen for checking the award-worthy tasks for predecessors and Franz Pachl for his help in the decision-making process.

The improvement of **15163** by Carlos de la Fé Dahlin by Indrek Aunver was not considered.

The Original by Indrek Aunver in connection with **15170** (Carlos de la Fé Dahlin) was not considered because it was not described as part of the tournament. Also there exist similar problems.

Predecessors were involved in the following problems:

**15110** by Kaj Engström & Carlos de la Fé Dahlin is anticipated by Josef Kricheli, 1435 Diagramme und Figuren, 29.12.1965, H#5, 2 Solutions, wKg3, wBd5, sKe5, sBb6.

**15057** by Zlatko Mihajloski. P0500122 by Leon Loewenton. 191 Die Schwalbe 7, p. 101, 01/1960, P0503825 by Yuri Bilokin, 1361 The Problemist 07/1989 and P1074323, by Leon Loewenton (4) feenschach, p. 399, 10-12/2000 uses the same scheme.

**15169** by Zlatko Mihajloski is essentially an economisation of P1394398 by the same author, 3618 Variantim 83, 04/2021 and a move shorter.

I have chosen the following ranking:

**1st Prize: 15166** by Marko Ylijoki

A great dedication problem with promotions in wQ/wR/wB and an amazingly clear position. The three solutions are creatively invented, with the two tempo moves of the pinned wQ standing out. Of the black officers, only the bSf2 exclusively prevents cooks.

1.- a8=R 2.Rg3 Ra2 3.Sf3 Kb3 4.Rg4 Kc4 5.Rf4 Re2#