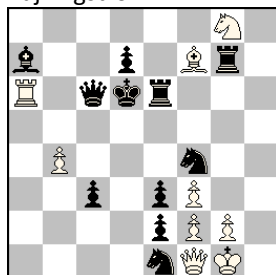


should choose which problems he is going to send.

1.Lf6 Lb2,Lc3 2.Th2 Ld4 3.Le5 Lc3 4.Ld4 Lb2 5.Lc3 Ka2 6.f8=D+ Ka1 7.Da8 Lxc3#

5 HO

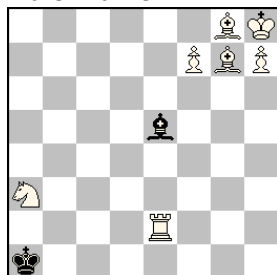
Kaj Engström



h#2 B: Ta6>h6

1 Omn

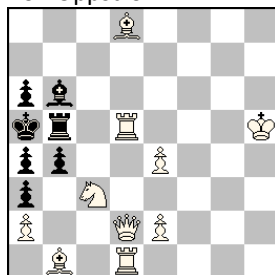
Indrek Aunver



s#7

2 Omn

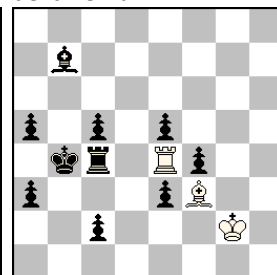
Rolf Uppström



#2

3 Omn Carlos

de la Fé Dahlin



h#3 3 lösn

## 2 Commended nr 1 – Rolf Uppström

15 Pelle moves, which is quite an achievement in a 2-mover. The position itself is a shame, because there is needed a wTd1 to stop a cook. Otherwise the play is good

1.Tg5 Tc5/Td5/Te5/Tf5/Txg5/Lc7/Ld8/bxc3/b3

2 Txc5/Txd5/Txe5/Txf5/Dxg5/Lxc7/Dxd8/Dxc3/Sxb5#

## 3 Commended nr 37 – Carlos de la Fé Dahlin

Three nice solutions. Very basic mates. White pieces don't have much space to move. It would be nice if white's first moves could be made without black pawns.

1.a4 Txe5 2.Tc3 Lc6 3.c4 Tb5#

1.Ka4 Txf4 2.Tb4 Le4 3.Tb3 Lc6#

1.Kb5 Txe3 2.Ta4 Ld5 3.Kb4 Tb3#

## 4 Commended nr 18 – Kaj Engström

Pin mates horizontally and diagonally. Also here White doesn't have many moves to make although the play is good.

1.c6 Txg5 2.Tf5 Txf5#, 1.c5 Lg2 2.Lf3 Lxf3#

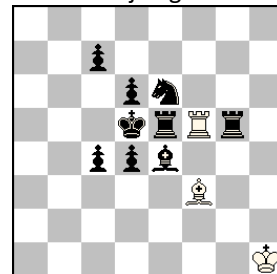
In Hyvinkää

26.11.2023

Kenneth Solja

International Judge for Chess Compositions

4 Omn Kaj Engström



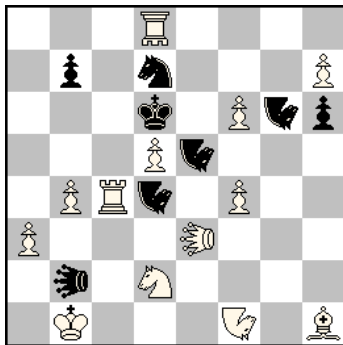
h#2 2 lösn

# Dom Springaren Sommar-T 2023

This year's Summer Tourney offered slim pickings: 16 entries from 9 authors, but the number of eligible problems was in effect smaller, since several of them were alternative versions of the same idea. Further exclusion of some problems that only superficially met the tourney criteria – that is, the pins were partly irrelevant to the solution, or “weasles”, as we say – meant that the award will be short and sweet.

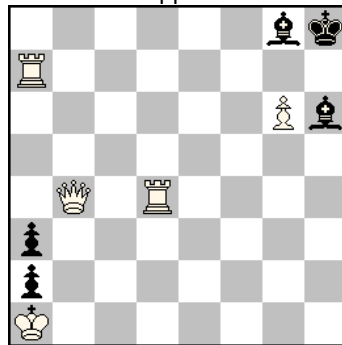
I have awarded one Prize, two Honourable Mentions and four Mentions, as follows:

Pr Juraj Lörinc &  
Emil Klemanič



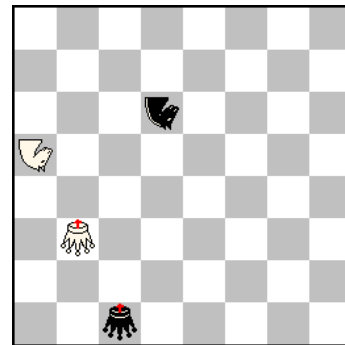
#2 1+3 nattryttare, 1+1 Leo,  
Girlscout d8

1 HO Indrek Aunver &  
Rolf Uppström



s#8

2 HO  
Neal Turner



ser- s=6 SAT Duplex

**Prize:** Juraj Lörinc & Emil Klemanič

The most interesting entry, by some margin. 1.Se4? gives up a flight on d5, so White needs to overprotect it by opening a line for Nf1, activating the threat. In each phase, the Leo pins one of Black's nightriders, and the other two defend by pinning the mating piece in turn, but concede other weaknesses. This all amounts to a cycle of defences and mates, technically known as the "Carousel" theme, and the basic scheme of pins and counter-pins serves as a strong thematic foundation.

A *nightrider* moves with 5 steps on straight lines. A *leo* moves without capture like a Q, but captures by first jumping over a hurdle. A *girlscout* moves on orthogonal zigzag lines, such as GSd8-c8-c7xb7 or GSd8-e8-e7-f7.

1.LEg3? (2.Se4#) Ndf3 (a) 2.GSc7# (A), 1. – Nh4 (b) 2.h8=N# (B) but 1. – Nxf6!

1.LEd3? (2.Se4#) Nh4 (b) 2.GSe7# (C), 1. – Nef3 (c) 2.GSc7# (A) (1. – Sxf6 2.GSe6#) but 1. – LEc2!

1.LExh6 (2.Se4#) Nef3 (c) 2.h8=N# (B), 1. – Ndf3 (a) 2.GSe7# (C), (1. – Sxf6/Sc5 2.Se4/bxc5#)

**1st Hon. Men.:** Indrek Aunver & Rolf Uppström

Two closely related versions were entered. This one has one more moves and greater scope for the black Bishop. Both versions are laden with transpositions and side variations that sort of cloud the main idea, which is a duel between the black Bishop on the one hand and the white Queen, seconded by the Rook, on the other. In particular, it is unfortunate that 1...Bg7/Bf8, which can be thought of as the main lines, do not produce equal (full-length) variations. Nevertheless, an effort worth rewarding.

(I should mention as a point of order that the stipulation calls for the creation of pins, not moves along existing pin lines. Although the mutual pin on the long diagonal is the primus motor of the problem, few moves are actually thematic.)

1.Rd8 Bg7+ 2.Qc3! Bf6 3.Re8! Bg7 4.Qd4 Bf6 5.Rf8! Bg7 6.Qe5 Bf6 7.Rfa8 Bg7 8.Qf6 Bxf6# (3. – Be5 4.Rf8! Bf6 5.Qd4 Bg7 [5...Be5 6.Rfa8] 6.Qe5 Rf6 7.Rea8 Bg7 8.Qf6)

(2. – Be5 3.Rf8! Bg7 [3. – Bd4 4.Rfa8; 3. – Bf6 4.Qd4 Be5 5.Rfa8] 4.Qe5 Bf6 5.Rfa8 Bg7 6.Qf6)

(1. – Bc1/Bd2 2.Qb2+/Qc3+; 1. – Be3 2.Qh4+ Bh6 3.Qf6+ Bg7 4.Rda8; 1. – Bf8 2.Qd4+! Bg7 3.Re8 Bf6 [3. – Be5 4.Rea8] 4.Rf8 Bg7 [4. – Be5 5.Rfa8] 5.Qe5 Bf6 6.Rfa8 Bg7 7.Qf6)

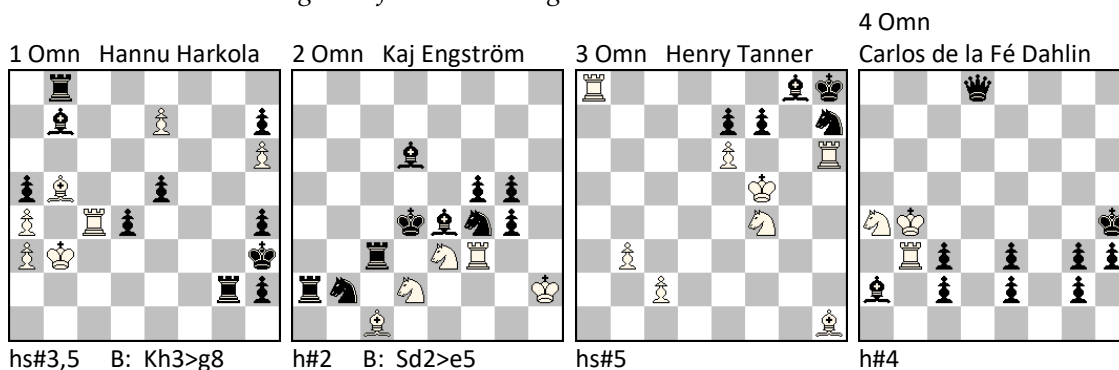
**2nd Hon. Men.:** Neal Turner

Two precise lines in super-miniature form. I can't honestly say that I have enough expe-

rience with this particular fairy condition to determine which patterns might be considered “standard” or “exceptional”, but evidently a checkless sequence is an unusual achievement. However, because the pinning theme is not prominently featured, I hesitate to place the problem any higher.

**SAT:** A K is in check if he has a flight-square according to orthodox rules. If he can't annul this, he is mated. A **royal grashopper** moves like a G can can be checked and mated like a K.

1.Ne7 2.Nc8 3.Nb6 4.rGb7 5.rGb5 6.Nf4+ Nf5=  
1.Ne4 2.Nc5 3.rGc6 4.Ng7 5.Nf5 6.Nh1 zz Ng2=



**1st Mention:** Hannu Harkola

One of two help-selfmates with roughly comparable content; a questionable twinning worked against the other one, so this was given preference. Despite the complex interaction of line pieces, only the moves 2...R8g3 and 3.Bc4 are thematic. A good scheme.

a) 1. – Rbg8 2.Rc3+ R8g3 3.Bc4 Bc8 4.Be6 Bxe6#  
b) 1. – Ra8 2.Rb4 Bd5+ 3.Bc4 Bf7 4.Rb8+ Rxb8#

**2nd Mention:** Kaj Engström

Technically and thematically the best h#2. Two solutions could be achieved, either by Sd2>a5 (C+), which I think would somewhat dilute the general impression of the problem, or, more interestingly, by removing Pg4 (and g5) and replacing the Bd6 by bQc7, which gives Sf3# instead of Sc6# (C+). Given the theme, however, the twin form with pins of the wS on the first move in both phases certainly seems justified.

a) 1.Sbd3 Bb2 2.Be5 Sb3# b) 1.Sfd3 Rf4 2.Bc5 Sc6#

**3rd Mention:** Henry Tanner

Platzwechsel of the two unpinned Black pieces, ultimately followed by the reappearance of the other white Rook on h6 with Zugzwang. An attractive idea, but the cook-stopping pawns on b3 and c2 are annoying.

1.Rg6 Sf6 2.Ra1 Bh7 3.Be4 Sg8 4.Rh1 f6 5.Rh6 Sxh6#

**4th Mention:** Carlos de la Fé Dahlin

Single-line clearing of obstacles on the third rank to create a pin mate. A nice enough idea.

1.h2 Sxc3 2.Kh3 Se4 3.Qh4 Rxe3 4.Bc4 Sf2#

Stockholm, 29th of November  
Lennart Werner