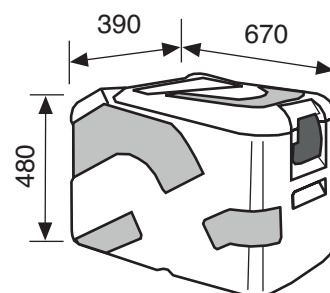


SPHERA GROUP

EPRF 32HC P

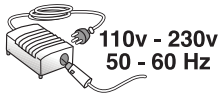
PORTABLE REFRIGERATOR / FREEZER

- **Structure:** completely in undeformable (UVA resistant), shock-proof, plastic material grey colour outside and aluminium coated white colour inside. All the internal corners are rounded to make easy any cleaning operation
- **Insulation:** high density (40 Kg/m³) foamed-in-place polyurethane, with a thickness of 65 mm. CFC-free. Thanks to the high thickness value, the portable maintains the internal temperature for long time (also when it is not connected to any electrical source)
- **Handles:** Nr 2, with grooves at the sides of the structure, allowing an easy handling of the portable
- **Insulated lid:** Nr 1, hinged, made with the same material and insulation as the rest of the structure (plastic material grey colour). The lid is fitted up with a perimetric gasket to assure a perfect sealing and with a special locking hanging-levers
- **Control panel:** located in the upper part of the structure (at the right side of the lid) is compounded by the following controls:
 - Main switch : appliance's ON/OFF switch, adjustable in 2 positions
 - Digital electronic thermostat with incorporated alarm : microprocessor operating, with 4 switches, allowing the control of all the portable functions (maintaining of the set temperature, compressor and fans functioning). The internal temperature is displayed with a LED display, with red colour, bright indication and an accuracy of 1°C. Into its functions, the thermostat includes even an alarm, both acoustic (with a buzzer) and visual (with indication LED dots) for temperature deviations, both over or below than the programmed one, with limits that remains adjustable according to the user needs. The acoustic alarm can be even muted through a special switch
 - Error warning lamp : signalling abnormal working situation (i.e. condenser or compressor temperature too high, vehicle battery discharged, wrong electrical connection, etc.)
- **Cooling unit:** mounted in the right part of the box, with the condensing unit compounded by Nr 1 hermetic compressor and Nr 1 finned condenser, air cooled through a fan. Also, the internal walls of the storage chamber are the evaporator, for a direct cooling of the stored material and granting a better temperature uniformity and stability due to the fact that the cold comes from 4 sides. All the mounted components are industrial grade to grant the maximum reliability
- **Refrigerant:** R134a CFC-free
- **Defrosting:** manual
- **Heating resistance:** electrical type, mounted in 4 sides, between the evaporator and the inner-walls of the portable structure granting a better temperature uniformity and stability due to the fact that the heat comes from 4 sides. All the mounted components are industrial grade to grant the maximum reliability
- **Refrigeration/heating:** static with the evaporator/resistance in 4 sides of the internal chamber, granting the maximum temperature uniformity and stability inside the box
- **Temperature range:** infinitely adjustable between -24°C / +40°C
- **Voltage (V):** 12 and 24
- **Plug:** the portable includes an electrical cord ending with the cigar lighter connector
- **Net capacity (litres):** 32
- **Dimensions (W x D x H cm):** 67 x 39 x 48
- **Net weight (Kg):** 19
- **Packed dimensions (W x D x H cm):** 78 x 47 x 57 (0,21 m³)
- **Gross weight (Kg):** 27



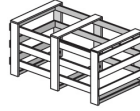
PORTABLE REFRIGERATOR / FREEZER

ACCESSORIES AVAILABLE



110v - 230v
50 - 60 Hz

Mains adapter



Wooden crate packing



ISO 9001:2015



EN ISO 13485:2016



VERS. 07.20

* The declared performances are referred at +35°C ambient temperature, relative humidity of 70% and without any internal thermal mass (empty cabinet).

* Should it be necessary or useful without undermining any model essential features, technical and stylistic characteristics are subject to be changed without manufacturer's previous notice.

SPHERA GROUP s.r.o.

info@spha-group.cz

Tel: +420 226 886 248

Průmyslová 7 Business Park

102 00 Praha, Czech Republic



SPHERA GROUP