

KIVA II ULTRA-COMPACT MODULAR LINE SOURCE



- + 6 dB SPL vs. Kiva
- High amplifier density (16 ohms)
- Sturdy cabinet
- Smooth polar response (K Grill)

ELECTRO-ACOUSTICS



The Kiva II is an ultra-compact WST® modular line source designed for long-throw sound reinforcement applications with minimum visual impact. The Kiva II features two 6.5" speakers in a bass-reflex cabinet and a 1.75" diaphragm compression driver loaded by a DOSC waveguide and L-Fins.

Kiva II features an outstanding SPL/format ratio thanks to the excursion and power capability of the transducers. The amplifier density is maximized with 16 ohm impedance.

The Kiva II operates from 70 Hz to 20 kHz. The coplanar transducer arrangement and the new K front grill produce a 100° symmetric horizontal directivity output with a smooth tonal response free of secondary lobes over the entire frequency range. In accordance with the WST coupling criteria to preserve the wave front coherency, the maximum inter-element angle is 15°.

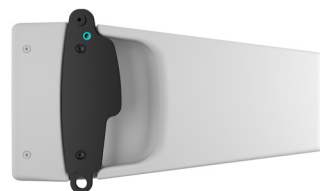
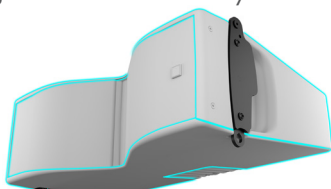
The internal passive crossover network uses custom filters. The L-Acoustics amplified controllers ensure the linearization and the protection of the transducers (L-Drive).



As a WST line source Kiva II features a long throw capability. The SPL is evenly spread from front to rear of the audience.

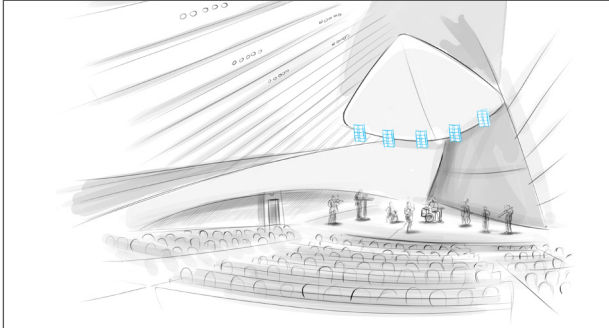
PHYSICAL

The cabinet is made of a new composite material, with a high immunity to moisture and shocks and remarkable acoustic properties. Kiva II weighs a mere 14 kg (31 lbs.) and its compact elegance makes for an easy integration in any situation. Available in white or custom RAL CLASSIC, it melts into any architecture. The enclosure is rated IP 55. The flush-fitted rigging features a visual safety check.

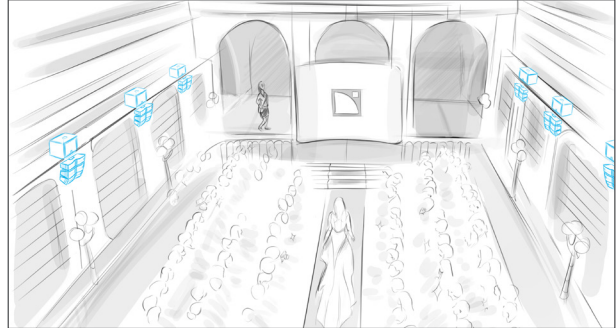


APPLICATIONS AND BENEFITS

Kiva II is particularly suited to multi-channel L-ISA systems in performing art centers or for sound reinforcement of special events. These fixed installations or rental projects demand an impactful and immersive sound system yet with a compact footprint to give room for either video displays, visual effects or preserve the architectural aspects of the venue.



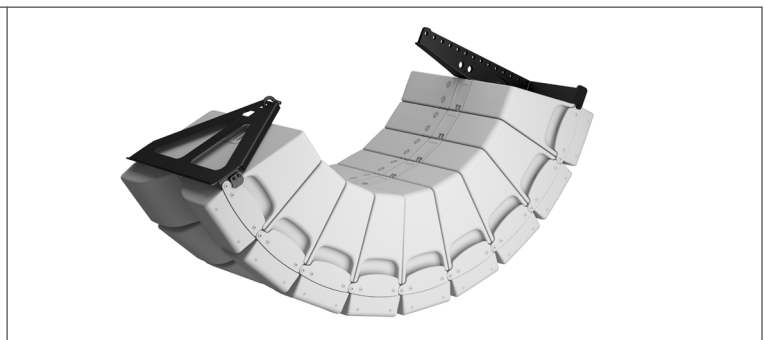
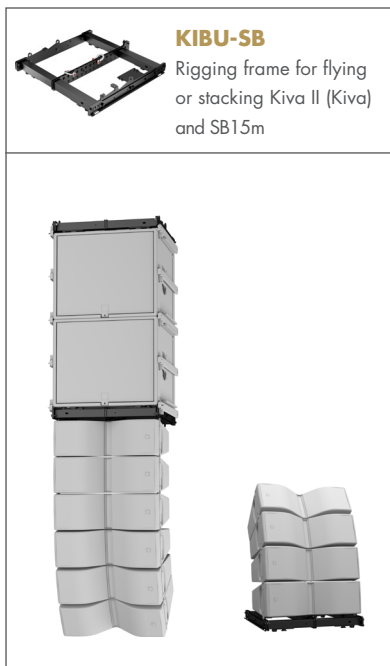
L-ISA multi-channel system



Special event distributed system

RIGGING

Kiva II can be flown as a standalone system or with the SB15m. Under-balcony, pole-mount and pullback arrangements are also possible.

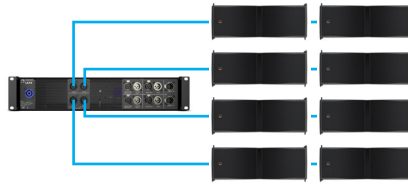


AMPLIFIED CONTROLLERS

LA4X: amplified controller with DSP



4 x 1000 W/8 ohms or 4 ohms
4 inputs x 4 outputs architecture
Max 8 enclosures per amplified controller



LA8: amplified controller with DSP



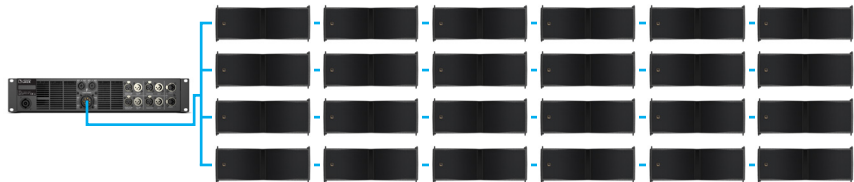
4 x 1800 W/4 ohms or 2.7 ohms
2 inputs x 4 outputs architecture
Max 16 enclosures per amplified controller



LA12X: amplified controller with DSP



4 x 3300 W/ 2.7 ohms
4 inputs x 4 outputs architecture
Max 24 enclosures per amplified controller



SUBWOOFER

SB15m: ultra-compact subwoofer (1x15")

System bandwidth: 40 Hz - 20 kHz



Ratio of 1 SB15m to 3 KIVA II
Contour reinforced
by 8 db at 100 Hz



Ratio of 1 SB15m to 2 KIVA II
Contour reinforced
by 10 db at 100 Hz



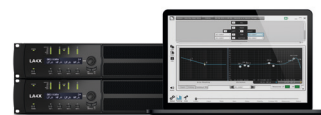
SOFTWARE

Soundvision: simulation software



3D electro-acoustic & mechanical
simulation software

LA Network Manager: control & monitoring software



Real-time control and
monitoring up to 253 units
Multiple network topologies



K series: modular vs. full range variable curvature line sources

The K range comprises modular and large format line sources adapted to long throw applications in rental productions and fixed installations.

Modular line sources (Kiva II/Kara(i)) can be deployed with or without their dedicated subwoofer extension, based on bandwidth/footprint priority requirement.

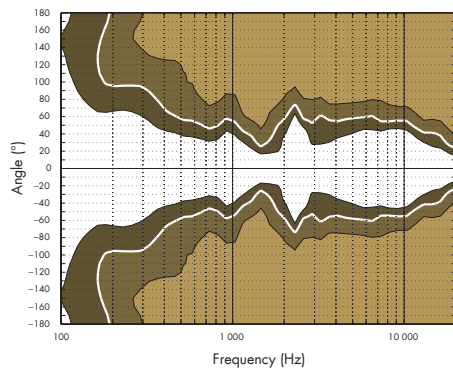
Large format line sources (K2/K1) are true full range systems with a maximized coherence due to the closeness of their LF/HF driver acoustic centers. Additionally, these systems can be deployed with K1-SB to boost the LF throw.

SPECIFICATIONS

Description	Passive 2-way WST enclosure amplified by LA4X / LA8 / LA12X
Usable bandwidth (-10 dB)	70 Hz - 20 kHz ([KIVA II])
Maximum SPL¹	138 dB ([KIVA II])
Nominal directivity	Horizontal: 100° Vertical: depending on the number of elements and array curvature
Transducers	LF: 2 x 6.5" neodymium HF: 1 x 1.75" neodymium compression driver
Acoustical load	LF: Bass-reflex enclosure HF: DOSC waveguide and L-Fins
Nominal impedance	16 Ω
Connectors	IN: 1 x 4-point speakON® LINK: 1 x 4-point speakON®
Rigging and handling	Flush fitting 3-point rigging system Inter-enclosure angles [deg]: 0, 1, 2, 3, 4, 5, 7.5, 10, 12.5, 15 2 handles
Weight (net)	14 kg / 31 lbs
Cabinet	Composite sandwich structure
Front	Composite grill with anti-corrosion coating Acoustically neutral 3D fabric
Rigging components	High grade steel
Finish	Dark grey brown PANTONE® 426C Pure white RAL 9010 Custom RAL CLASSIC code on special order
IP	IP 55

1- Peak level at 1 m under free field conditions using pink noise with crest factor 4 (preset specified in brackets).

DIRECTIVITY/BEAMWIDTH



DIMENSIONS

