

# SOLID SOLUTION DESIGNS

## Projectile Information

### Name

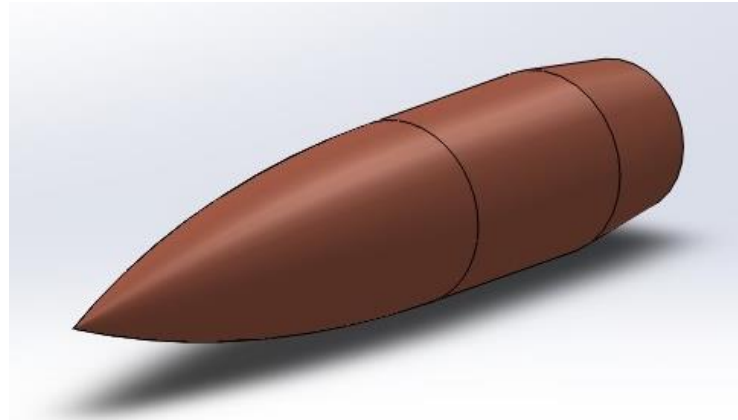
SSD 419 grain Empire

### Caliber & Twistrate

.408 use with 1:13 twist or faster

### Effective range:

2.800 m (supersonic range)



| Comparison with other bullets |                   |
|-------------------------------|-------------------|
|                               | <i>True BC G1</i> |
| SSD 419 grain                 | 0.815             |

### Accuracy to be expected:

'Hole-in-hole' at 100m. Use the SSD-Field Test plan to find the correct OAL for the rifle used.

### Suggested OAL

The bullet should never be seated deeper than the beginning of the ogive. Also the bullet should not touch the lands and fields of the barrel, in order to prevent overpressure.

### Examples:

.408

Minimal: 108,3 mm

Maximum: 121,5 mm (should not touch the rifling)

| Quickload information |               |             |
|-----------------------|---------------|-------------|
| BC G1                 | 0.815         |             |
| Weight                | 419 grain     | 27,15 g     |
| Length                | 51,82 mm      | 2.04"       |
| Velocity band         | 2800-3000 fps | 853-914 m/s |

### Suggested Powder

RS80/N570

| Rifle: .408 Barrel: 30 inch Twist: 1 in 13"   |                  |                     |                 |                |
|---|------------------|---------------------|-----------------|----------------|
| Primers: Large Rifle Magnum                   |                  |                     |                 |                |
| Cases: H&H , trim-to length 77,21 mm (3,039") |                  |                     |                 |                |
|   | OAL              | Powder              | Velocity        | Velocity       |
| <b>.408</b>                                   | <b>111,97 mm</b> | <b>148 gr RS 80</b> | <b>3067 fps</b> | <b>934 m/s</b> |
|   | <b>109.8 mm</b>  | <b>133 gr N570</b>  | <b>2890 fps</b> | <b>881 m/s</b> |
|   | <b>111.5 mm</b>  | <b>134 gr N570</b>  | <b>2890 fps</b> | <b>881 m/s</b> |