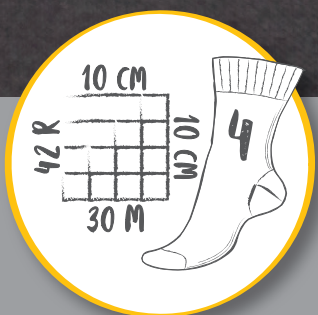


REGIA 
PREMIUM



Shirburn Socks

R0413

schachenmayr.com

Follow us     

MEZ GmbH, 2020. All rights reserved.






R0413

V.1/EW

Shirburn Socks

Knitting Intermediate 

Design: REGIA Designteam

SIZES

32/33, 36/37 und 40/41

Directions for sizes are given in ascending order, separated by commas. Only one figure applies to all sizes.

MATERIALS

REGIA PREMIUM Merino Yak, 100 g ball

07513 (mint meliert), 1 ball

Five US 1-3 [2-3mm] dpn

cable needle

GAUGE

Cable-rib pattern: 31sts and 42 rnds = 4" [10cm];**Stockinette stitch:** st30 sts and 42 rows/rnds = 4" [10cm].

BASIC PATTERN

Rib pattern: Work foll chart below the broken line.**Stockinette stitch:** in rnds K all sts; in rows K RS rows; P WS rows.**Cable-rib pattern:** In odd rnds work foll chart above the broken line; in even rnds work sts as they appear. Rep rnds 1 to 12.

INSTRUCTIONS

With 4 dpn cast on 56 (60, 64) sts evenly across (= 14 (15, 16) sts on each needle) and work 1½" [3cm] rib patt for cuff. For size 32/33 start with P1 (= 3rd st of chart), then ★K2, P2, rep from ★, end with P1. For sizes 36/37 and 40/41 start patt with K1 as shown, then ★P2, K2, rep from ★, end with P1. Cont in cable-rib patt. For size 32/33 only start patt with 3rd st, then 4-st rep 13 times, end with the last two sts of rep. Also, in every 3rd patt rnd at beg of rnd K first st on Needle 1, and at end of rnd cross the last st on Needle 4 with the first st on Needle 1. For sizes 36/37 and 40/41 work patt rep 15 (16) times.

When leg measures about 4¾ (5¾, 6¾)" [12 (15, 16)cm], work another 4 rnds across Needles 1 and 4 in St st, and across Needles 2 and 3 in cable-rib patt = leg measures about 5¾ (6¾, 6¾)" [13 (16, 17)cm]. For sizes 32/33 and 40/41 cont with cable-rib patt across the 28 (32) sts on Needles 2 and 3; for size 36/37 cont in cable-rib patt across the 28 center sts on Needles 2 and 3, K first st on Needle 2 and the last st on Needle 3. Now work foot with boomerang heel as given in our Sock Guide.

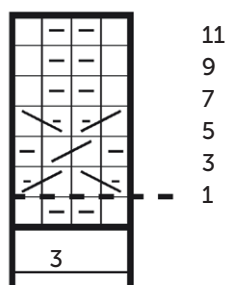
Work the boomerang heel in St st in rows across the 28 (30, 32) sts on Needles 1 and 4, leave sts on Needles 2 and 3 on a holder. After the first half of heel work 2 rnds in St st across Needles 1 and 4, and in cable-rib patt across Needles 2 and 3 as before. At the end of heel cont again in rnds in St st across Needles 1 and 4, and in cable-rib patt as before.

At the end of heel cont again in rnds in St st across Needles 1 and 4, and in cable-rib patt across Needle 2 and 3 as before to start of toes.

When foot measures 6¾ (7¾, 8¾)" [17 (18.5, 21)cm] work toes in St st. Total length of foot about 8¾ (9¾, 10½)" [21 (23.5, 26.5)cm]. Work both socks in the same manner.

Note: The socks can also be worked in all sizes following these instructions, our sock guide, and the table. For leg for sizes 28/29, 30/31, 34/35, 44/45 and 46/47 start rib patt and cable-rib patt with 3rd st; for foot work for sizes 22/23, 24/25, 28/29, 30/31, 38/39 and 44/45 as foll: work 1st st on Needle 2 and the last st on Needle 3 in St st, and the sts in between in cable-rib patt.

CHART FOR CABLE-RIP-PATTERN



4-st rep

- = K1
- ◻ = P1
- ◻ (with diagonal line from top-left to bottom-right) = slip 1 onto a CN and hold at front of work, P1, then K1 from CN
- ◻ (with diagonal line from top-right to bottom-left) = slip 1 onto a CN and hold at back of work, K1, then P1 from CN
- ◻ (with diagonal line from top-left to bottom-right) = slip 1 onto a CN and hold at back of work, K1, then K1 from CN

ABBREVIATIONS

alt	= alternate	patt	= pattern
beg	= beginning	rem	= remaining
CN	= cable needle	rep	= repeat
cont	= continue	RS	= right side
dec	= decrease	st(s)	= stitch(es)
dpn	= double point needles	St st	= stockinette stitch
foll	= follow/s/ing	tog	= together
K	= knit	WS	= wrong side
P	= purl		

Tip

You will find the course „Technique of sock knitting“ at www.schachenmayr.com and regia.de under the design No R0333. Sizing charts can be found at Tips & Tricks at www.schachenmayr.com.

© Did you know that our designs are on Ravelry too? Search for the model number, create your project and link it to our pattern for all Ravelers to see and to admire.

#regiadesign