

Schachenmayr

SINCE 1822



REGIA PREMIUM

R0398

SOCKS WITH
DIAMOND PATTERN



Recommended Yarn

schachenmayr.com

Follow us     

MEZ GmbH, 2019. All rights reserved.





R0398

SOCKS WITH DIAMOND PATTERN

Design: Arne & Carlos

V.1/RB/MD

Knit

Expert



Instructions are for smallest size, with changes for larger sizes noted in different colors. When only one figure is given, it applies to all sizes.

SIZE

34/35 36/37 38/39 40/41 42/43

MATERIALS

REGIA PREMIUM Merino Yak, 100 g ball

approx. 100 g = 400 m

Color 07516 (Gras green)

1 ball

Color 07515 (Nachtblau meliert)

1 ball

Double Pointed Needles 2.5 – 3.0 mm

1 tapestry needle yarn needle for weaving in ends

THE BASICS

Ribbed pattern:

k2, p2 to end of round.

Stockinette stitch:

In rows: RS: knit all st; WS: purl all st.In rounds: knit all st.

Diamond Patterns 1 and 2: Multiples of 8 st. Following Pattern Charts 1 and 2, work in stockinette st using stranded colorwork technique. Always carry the unused threads loosely along the inside of the work. The numbers to the right of the chart indicate the rounds. Exact proportions in length and width are given in the instructions.

GAUGE

Stockinette st, 2.5 – 3.0 mm size needles:

30 st and 42 rows/rounds = 10 x 10 cm.

Diamond pattern, 2.5 – 3.0 mm size needles:

28 st and 32 rows/rounds = 10 x 10 cm.

If your gauge differs from the given gauge, use a hook of a larger or smaller size accordingly.

INSTRUCTIONS

Cast on 56/60/60/64/64 M in Midnight Blue Mélange; divide the st evenly over 4 needles and join to work in the round (= 14/15/15/16/16 st on each needle). For the cuff, work in the ribbed pattern using the following stripe sequence: 3 Rd Midnight Blue Mélange, 6 Rd Grass Green, 7 Rd Midnight Blue Mélange, 6 Rd Grass Green and 3 Rd Mid-

night Blue Mélange. In the last row of the cuff, knit 2 st together on each of the needles /1/1/0/0x = 56/56/56/64/64 st. Then continue working the shaft in Diamond Pattern 1, working the 8-stitch pattern repeat 7/7/7/8/8x in each round. For a better overview, 2 pattern repeats are illustrated here. For the shaft, work Rds 1 – 14 once, then repeat Rds 7 – 14 6x, then work Rds 15 – 19 once.

When the piece measures 21 cm = 67 Rd from the cuff, work a boomerang heel in stockinette st and Grass Green over the 28/28/28/32/32 st on Needles 1 and 4, following the tutorial "Knitting Socks with a Boomerang Heel."

Note: In the first row of the boomerang heel on Needles 1 and 4, make 0/1/1/0/0 right-leaning increase from the bar between two st in the middle of the row = 28/30/30/32/32 st.

Stitch division for boomerang heel: 9/10/9 st 10/10/10 st 10/10/10 st 10/12/10 st 10/12/10 st. In the last Rd of the boomerang heel on Needles 1 and 4, knit 2 st together again in the middle of each needle 0/1/1/0/0x = 28/28/28/32/32.

When you have completed the boomerang heel, work in rounds again over all st following Diamond Pattern 2. Work the 8-stitch pattern repeat 7/7/7/8/8x in each round. For a better overview, 2 pattern repeats are illustrated here. When you have worked 42/42/50/50/50 Rd after completing the boomerang heel, continue working the sock in stockinette st in Grass Green; in the first round, make a right-leaning increase through the bar between two st on each needle 0/1/1/0/0x = 28/30/30/32/32 st (= 14/15/15/16/16 st per needle). When the foot measures 18/19/20/21/22 cm, work the toe shaping over all 56/60/60/64/64 st, following the tutorial "Knitting Socks with a Boomerang Heel." After the 1st decrease round, repeat the toe decreases as follows: 0/1/1/1/1x in the following 4th round, 2x in every following 3rd Rd, 3x in every 2nd round and 6/6/6/7/7x in every Rd.

FINISHING

Thread the working yarn through the 8 remaining stitches and pull to close. Weave in the end.

Work the 2nd sock in the same way.

TIP: You can find the tutorial "Knitting Socks with a Boomerang Heel" under Tips & Tricks on www.schachenmayr.com.

Chart 1

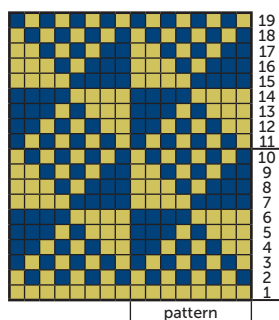
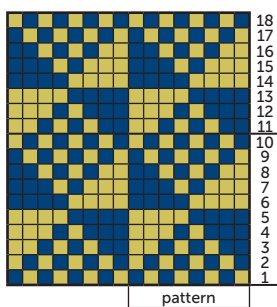


Chart 2



Key

- = 1 st in color 07516 (Gras green)
 = 1 st in color 07515 (Nachtblau meliert)

ABBREVIATIONS

- k = knit
 p = purl
 RS = right side
 st(s) = stitch(es)
 WS = wrong side

Size Table for Socks with Regia 4-ply

Gauge: 30 sts. and 42 rows/rounds st-st, each to 10 cm [4"]

Size	32/33	34/35	36/37	38/39	40/41	42/43	44/45
Stitch cast-on, sts per needle	56/14	56/14	60/15	60/15	64/16	64/16	68/17
Total stitches for heel	28	28	30	30	32	32	34
Length shaft (cm)	14	16	16	18	18	19	19
Boomerang Heel							
Width heel (st)	28	28	30	30	32	32	34
Stitches for round heel	9/10/9	9/10/9	10/10/10	10/10/10	10/12/10	10/12/10	11/12/11
Length foot to start of toes (cm)	17	18	19	20	21	22	22,5
Decreases for toe shaping after 1st decrease round							
On 4th round	0x	0x	1x	1x	1x	1x	1x
On every 3th round	2x	2x	2x	2x	2x	2x	2x
On every 2nd round	3x	3x	3x	3x	3x	3x	4x
On every round	6x	6x	6x	6x	7x	7x	7x
Total length of foot (cm)	21	22	23,5	25	26,5	27,5	28,5