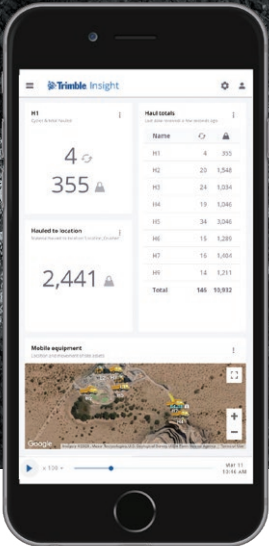




Truck #54

Loads today:	19
Tons today:	640.3 t
Average payload:	33.7 t
Downtime:	02:11:44
Average cycle time:	00:10:19
Miles today:	38.1
Peak speed:	22.1 mph
Average speed:	19.5 mph

Optimize load/haul operations



Trimble Smart Haul

Optimize Load/Haul

Load/haul operations represent real opportunities to improve material moved per shift, lower cost per ton moved and accelerate mass haul operations.

With Trimble Smart Haul, you can track productivity and progress of load/haul operations to ensure you are on target to achieve your goals.

Trimble Smart Haul combines payload data from the excavator scale with haul fleet monitoring and cloud reporting to identify opportunities to move material with greater speed and efficiency.

The system is almost completely automated with only minimal interaction from the excavator operator. Payload is automatically assigned to each truck, and GPS tracking monitors truck movements, so operators can focus on other tasks and you can trust data accuracy.

BENEFITS

- ▶ Real-time visibility of load and haul operations from the site or office
- ▶ Accurate and detailed automatic data collection, not reliant on operators
- ▶ Maximize mobile fleet utilization with run-time and operation delay tracking
- ▶ Identify bottlenecks affecting progress and production
- ▶ Optimized truck loading efficiency
- ▶ Identify over or under-trucking and match to processing demand
- ▶ Mixed-fleet support to centralize production data in one location
- ▶ Clear cycle time and stoppage analysis for each haul road section
- ▶ Material movement traceability to reduce cross-product contamination

REDUCE WASTE

- ▶ Under and over-loading
- ▶ Truck queuing (line-ups)
- ▶ Slow or inconsistent cycle times
- ▶ Truck rollover
- ▶ Excessive tire wear

FASTER AND MORE CONSISTENT CYCLES

Load and Haul Cycle



Optimized with Trimble Smart Haul

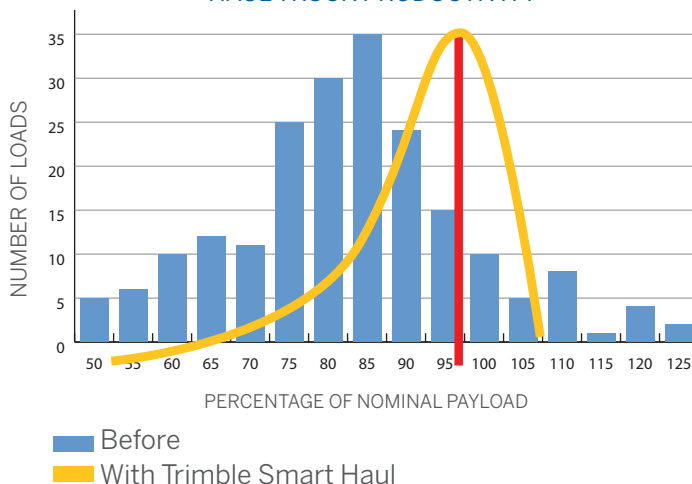


HIGHER PRODUCTION

Trimble Smart Haul systems provide accurate haul totals removing the need for tally sheets and production estimates. Reports help to highlight inefficient material movements. It is also a powerful tool for tracking sub-contractor progress with accurate, real-time, electronic data providing a single source of the truth.

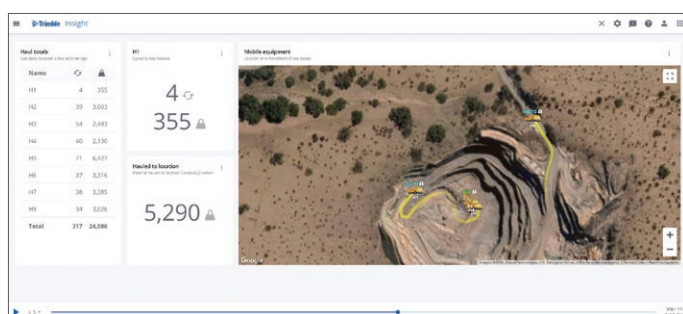
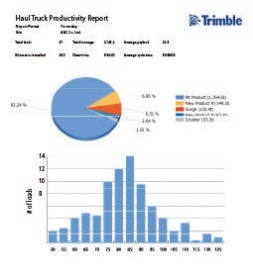
Take control of your payload variance, with accurate loadout. Trimble Smart Haul helps prevent overloading, and reduces underloading, to optimize every truck and maximize total production by increasing tons per shift.

HAUL TRUCK PRODUCTIVITY



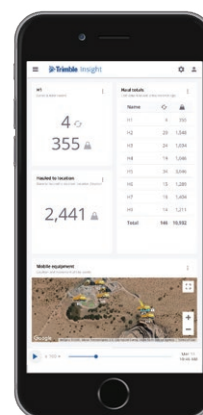
The image displays the i-Tree Eco software interface across four different devices: a desktop monitor, a laptop, a tablet, and a smartphone. Each device shows a different view or data set within the application.

- Desktop Monitor:** Shows a list of trees with columns for Name, Age, DBH, Height, and Species. The summary statistics on the right indicate 4 trees with a total DBH of 355. The map shows a landscape with tree locations marked by colored dots.
- Laptop:** Shows a list of trees with columns for Name, Age, DBH, Height, and Species. The summary statistics on the right indicate 7 trees with a total DBH of 347. The map shows a landscape with tree locations marked by colored dots.
- Tablet:** Shows a list of trees with columns for Name, Age, DBH, Height, and Species. The summary statistics on the right indicate 6 trees with a total DBH of 602. The map shows a landscape with tree locations marked by colored dots.
- Smartphone:** Shows a list of trees with columns for Name, Age, DBH, Height, and Species. The summary statistics on the right indicate 9 trees with a total DBH of 686. The map shows a landscape with tree locations marked by colored dots.



Trimble Smart Haul logs the truck speed to identify speeding events and slow sections of haul roads, ranks and maps the location on a map to make it easy to manage truck speed issues.

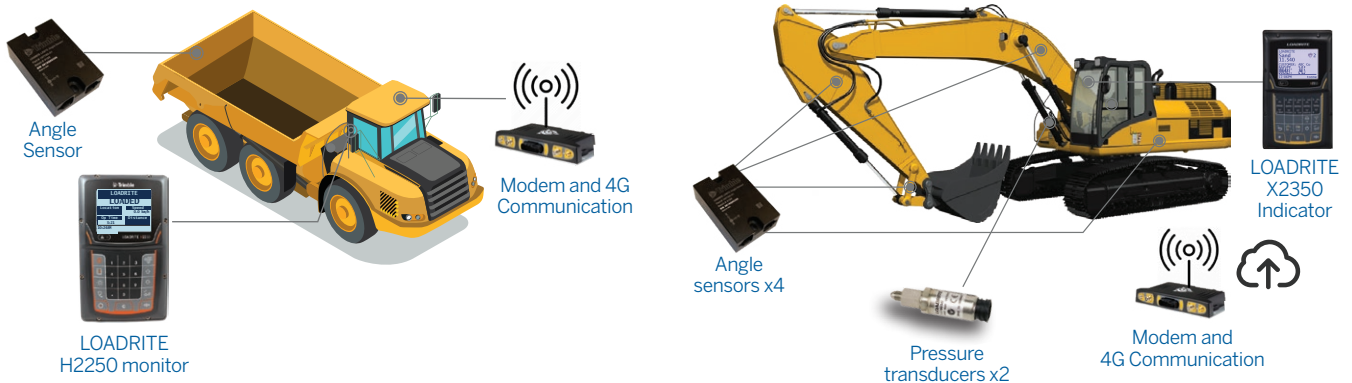
See all of your load and haul productivity data at a glance. Compare operators and check that your haul fleet is meeting plant demand, adjusting to changes in cycle time or that product ratios are meeting targets. Loading efficiency data with an average load and hauling time is also available to view.



How It Works

Payload is measured on the excavator scale and logged as a loading event. Likewise, the haul truck logs the load and dump event and the two events are synchronized in 'InsightHQ' web portal to provide accurate, time-stamped productivity monitoring.

SYSTEM COMPONENTS



Trimble: Transforming the Way the World Works

Trimble® helps increase site profitability, maximize productivity, improve operational efficiency and get control of your inventory. Trimble has a range of LOADRITE loader scales, excavator scales, conveyor belt scales, payload reporting, tractor scales, forklift scales and refuse truck scales.

Learn more at loadritescales.com



YOUR LOCAL DEALER

SITECH

www.sitechsverige.com

Sitech Sverige AB

Radiatorvägen 11
702 27 Örebro

010-456 80 00

info@sitech-sverige.com



Trimble, Inc (Auckland office)

45 Patiki Road, Avondale, Auckland 1026
New Zealand
Tel: +64 9 820 7720
info@loadritescales.com
www.loadritescales.com

