

THE SOUND OF MUSIC

Words by

SELECTION FOR CONCERT BAND

Music by

OSCAR HAMMERSTEIN II

Arranged by

RICHARD RODGERS

ROBERT RUSSELL BENNETT

Basses (Tubas)

Moderato maestoso (in 2)

The musical score for Basses (Tubas) is written in bass clef with a key signature of one flat (Bb) and a 2/4 time signature. It begins with the tempo marking 'Moderato maestoso (in 2)'. The first section consists of three measures of music, each starting with a forte piano (*fp*) dynamic marking and a fermata over the first measure. Measure numbers 13, 21, 29, 37, 45, 53, and 61 are circled. At measure 21, the tempo changes to 'Same tempo (cantabile)'. The dynamics shift to mezzo-piano (*mp*) at measure 29, piano (*p*) at measure 45, and mezzo-piano (*mp*) at measure 61. A 'ten.' (tension) marking is placed above the staff at measure 45. The piece concludes with the instruction 'poco a poco rall. e dim.' (poco a poco rallentando e diminuendo) starting at measure 61, leading to a final forte (*f*) dynamic marking.

Basses (Tubas)

Allegro

Musical score for Basses (Tubas) from measure 75 to 107. The score consists of six staves of music in bass clef with a key signature of one flat and a 2/4 time signature. It features a rhythmic pattern of eighth notes with accents and slurs. Measure numbers 75, 91, and 107 are circled. Dynamics include *f*, *mf*, and *mp*.

Allegretto

Musical score for Basses (Tubas) from measure 123 to 143. The score consists of four staves of music in bass clef with a key signature of one flat and a 2/4 time signature. It features a rhythmic pattern of eighth notes with accents and slurs. Measure numbers 123, 131, and 143 are circled. Dynamics include *mp* and *f*.

Allegro animato (in one)

Musical score for Basses (Tubas) from measure 143 to the end. The score consists of one staff of music in bass clef with a key signature of one flat and a 3/4 time signature. It features a rhythmic pattern of eighth notes with accents and slurs. Measure number 143 is circled. Dynamics include *p* and *f*.

Basses (Tubas)

1

151

159

f

mf

169

177

f

185

193

Moderato

cresc.

ff

mp cantabile, non troppo legato

201

209

217

ff

p subito

Basses (Tubas)

Allegro

233

241

248 *sempre p*

259

267

275

283

ff

Valse moderato

p

Basses (Tubas)

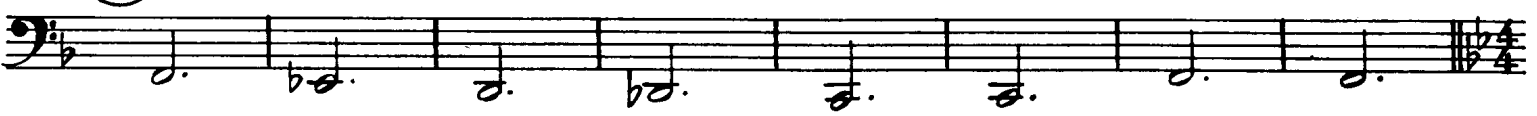
305



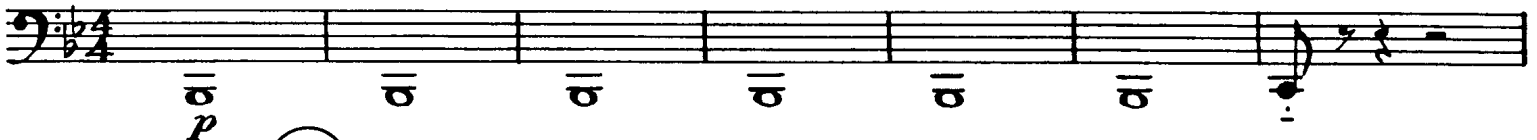
313



321



Moderato con espress.



337



morendo

Allegro non troppo



357



365



373



Basses (Tubas)

381

♩ = ♩ *Con grazia*

393

quiet Chorale

401

407 *with deep feeling*

p

415

423

431

cresc.

Largo

rall.

ff

fff