

CONCERTO in Eb

for trumpet & Strings

Cello

1 - Allegro ♩ = 90

Johann Baptist Georg Neruda (1708 -1780)

Cadenzas & Arr. Michel Rondeau

The musical score for Cello consists of ten staves of music, each beginning with a measure number. The key signature is two flats (Bb and Eb) and the time signature is 2/4. The score includes various dynamics and articulations:

- Staff 1 (measures 1-8): *f* (forte), *simile* (marcato).
- Staff 2 (measures 9-17): *p* (piano).
- Staff 3 (measures 18-26): *cresc...poco a poco* (crescendo...poco a poco), *f* (forte).
- Staff 4 (measures 27-35): *f* (forte), *p* (piano).
- Staff 5 (measures 36-44): *f* (forte), *p* (piano), *mf* (mezzo-forte), *simile* (marcato).
- Staff 6 (measures 45-53): *f* (forte), *mf* (mezzo-forte), *p* (piano), *mf* (mezzo-forte).
- Staff 7 (measures 54-62): *p* (piano), *mf* (mezzo-forte).
- Staff 8 (measures 63-71): *p* (piano), *mf* (mezzo-forte).
- Staff 9 (measures 72-80): *p* (piano), *f* (forte).
- Staff 10 (measures 81-90): *p* (piano), *cresc...poco a poco* (crescendo...poco a poco).

90 *f*

99 *p* **3** *f*

110 *mp*

119 *p* *f* *p*

127 *mf* *p*

135 *f*

144 *p*

153 *cresc...poco a poco* *f* *p*

162 *f*

170 *f* *simile*

J.B.G. Neruda CONCERTO in Eb Cello

179

188

198

207

234

243

249

254

260

265

272

277



282 *Cadenza*



287 *3 - Vivace* $\text{♩} = 120$ *simile*



attacca *f* *p*

293



300



p *f*

306



mf

313



f *p*

321



328



p

335



341



348



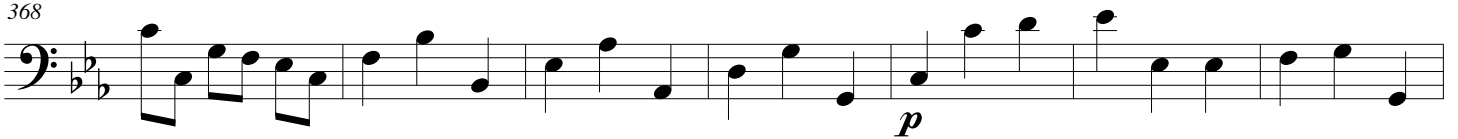
354



361



368



375



381



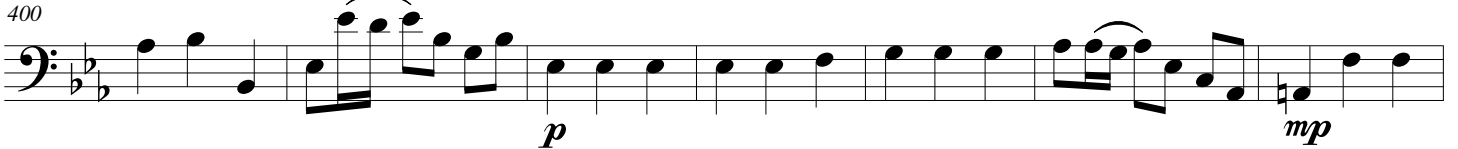
387



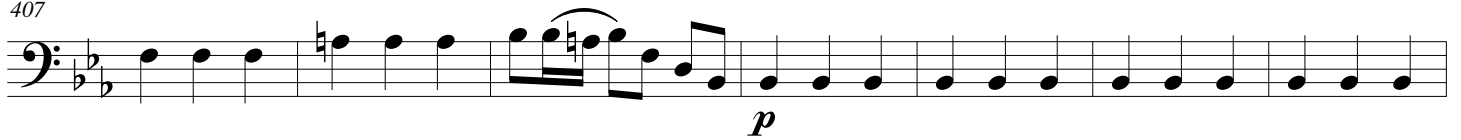
393



400



407



414



422



429



444



450



457



462

