

# SUBLISTAR BREAKTHROUGH STAR IV DTF MACHINE UPGRADING



DTF INK



Variable Sized  
Droplet Technology



Nozzle Resolution



High Durability

EPSON PrecisionCore Printhead



DTF STAR IV

# SPECIFICATION

## STAR IV DTF PET Film Inkjet Printer

Brand		Sublistar		
Item Model		DTF-6002 STAR IV	DTF-6003 STAR IV	DTF-6004 STAR IV
Print Head		Using Epson print head, including 400 nozzles/row*8*lines, high quality up to 1800dpi		
Print Resolution/Speed		4pass: 12m2 /hour	4pass: 22m2	
		6pass: 8m2/hour	6pass: 16m2	
		8pass: 6m2/hour	8pass: 12m2	
Ink	Types	Water Based Ink		
	Capacity	5 Colors: 1.5L*5/color	9 Colors: 1.5L*9/color	5 Colors: 1.5L*5/color
Media	Maximum printing width	600mm		
	Maximum Width	620mm		
	Thickness	1.5mm to 6mm adjustable		
	Max Roll Weight	20kg		
	Types	PP Synthetic Paper, Vinyl Sheet, Film, Coated Paper, Canvas , Adhesive Vinyl Sheet, Banner and so on.		
Media Heater		Front / Rear Heaters (individually controllable)		
Interface		Network Port		
RIP Software		Maintop6.1, Photoprint, CADlink, Print Factory		
Voltage		AC110V+/- 10%, AC220V+/-10%, 50/60+/-HZ		
Operating Environment		Temperature: 20°C- 35°C, Humidity: 35%RH-65%RH		
Power		200w~450w		
Dimensions		1766*750*1513mm (L*W*H)		
Height of Worktable		1062mm		
Package Size		1880*1060*740mm (L*W*H)		
Net Weight		190KG		
Gross Weight		210KG		

# SPECIFICATION

## DTF Powder Shaker and Dryer(S10)

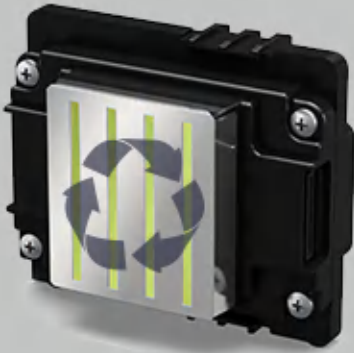
Model	DSP-750 (S10 plus)
Operation Mode	SCM Touch Screen
Max Working Width	750mm
Oven Length	1500mm
Oven Temp.	Adjustable
Voltage	110v/220v,2phase,60Hz
Power	3.5-4Kw
Machine Size	2548*1030*907(L*W*H)

# APPLICATION

## Discover the Print Difference



# DETAILS



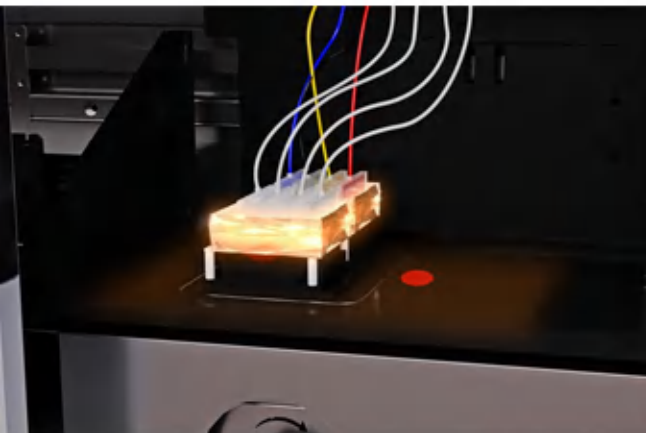
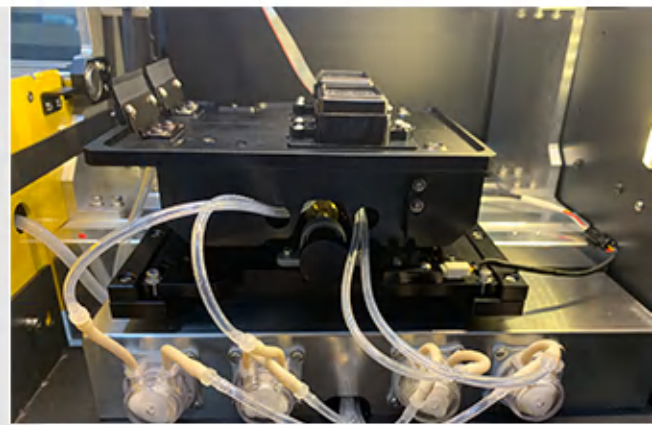
## Automatic In-Line Cleaning System

Support automatic nozzle cleaning at regular intervals. When the printer is online, it automatically load ink and clean automatically, which not only helps reduce overall maintenance costs, but also saves time through automation.

## Automatic In-Line Moisturizing System

In order to prevent ink from clogging the nozzle, the ink cap will eject some moisturizer every once in a while to keep the nozzle clean and moist. This is the automatic in-line moisturizing system.

Which can keep the printer nozzle in the best working state, avoid blocking the nozzle hole due to volatilization of solvent, and prolong the service life of the nozzle.



## Print Head Heating System

By heating the ink damper and the carriage base, the printer can work normally in a lower-temperature environment. In the printing process, ensure good fluidity of the ink.

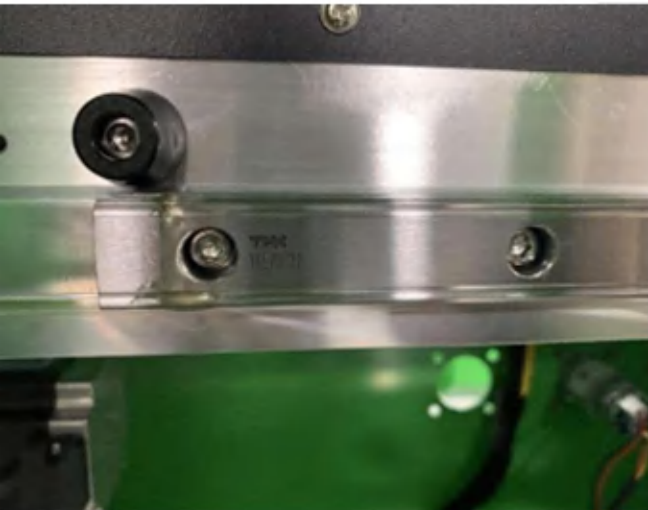
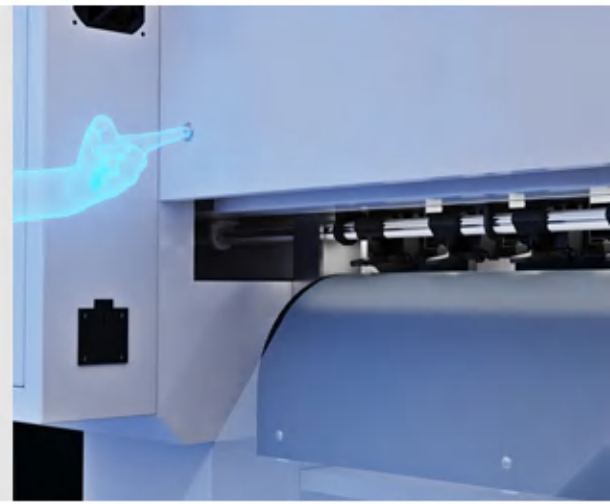
## Front & Rear Heating Devices

The worktable of the new generation DTF printer is equipped with heating devices in the front and rear directions, which can ensure that the printed pattern becomes dry instantly.



## Advanced Pass System

Advanced algorithms and tension-controlled paper feeding are used to reduce visible streaks and uneven color printing, as well as blurred borders of printing.



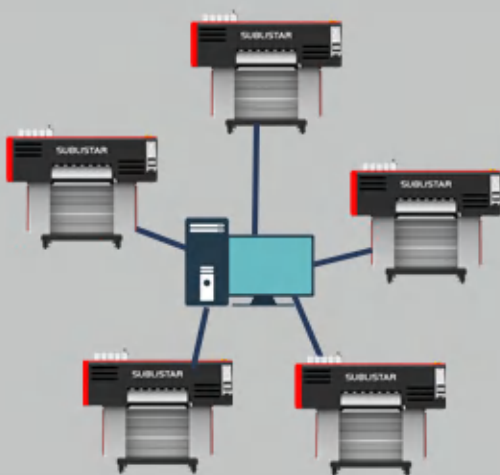
## THK Mute Linear Guide

Stable operation and low noise. The friction between the sliders of the silent guide rail is greatly reduced, and the retention of lubricating grease is improved, thus achieving low noise, high speed, long service life and long-term operation without maintenance.

## White Ink Circulation & Filtration System

Our imported filter not only effectively intercepts large particles, gels and other impurities, but also allows the required pigment dyes to pass through and remain in the ink.

The imported filter has excellent impurity filtering ability and longer service life.



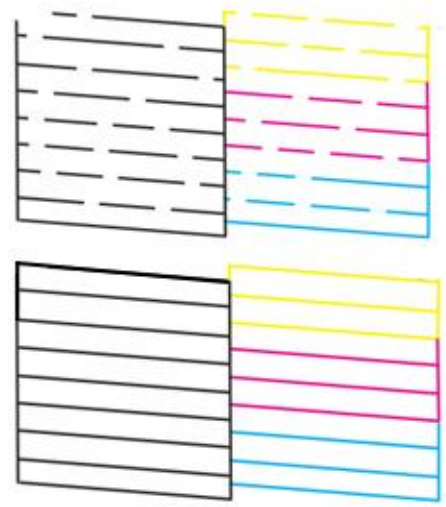
## MPM(Multi-Printer Manager)

One computer can control multiple devices, and different IP manage printing.

MPM (Multi Printer Manager) enables one computer to manage multiple printers, helping workers to control machine production more quickly and further improve production efficiency.

## Nozzle Compensated

When there are discontinuous lines and blank areas, the nozzles will eject larger-sized ink droplets to fill up the missing areas and solve the missing printing problem.



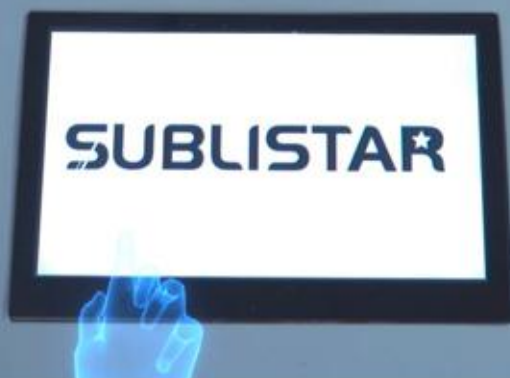
## CCD Camera

High-resolution pixel cameras capture nozzle conditions in time during printing. The bound mobile APP will prompt synchronously. This great technology allows you to know the state of the printer at any time.

It can reduce the production process, improve the production efficiency, cut down the defective rate and the cost.

## Sublistar Mainboard

Different from the mainboard functions of other companies, the one independently developed by Sublistar can provide customized functions according to the needs of customers.



## SCM Shaker Control Panel

Equipped with an easy-to-use touch screen. Navigate the menu by simply touching the desired option.

## Tension Take-up Reel

The paper take-up with tension system allows you to complete production unattended for a simple and precise workflow from printing to loading and feeding through the roll-to-roll securely wound.

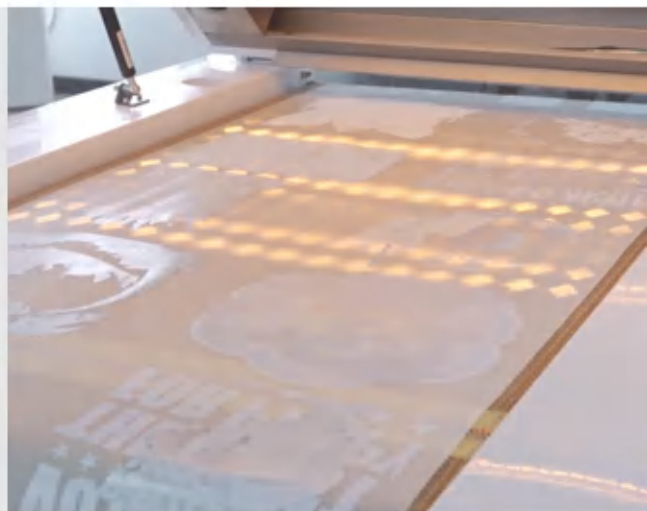


## Energy Saving Cure Oven

The closed oven ensures rapid rise to specified temperature while significantly reducing energy consumption.

## Suction Conveying System

Vacuum adsorption conveying platform, absorbing the print material to ensure that the material does not bulge or run off.



## Integrated Permanent Purifier

Sublistar's self-developed smoke purification treatment technology, no need to replace the filter element regularly. Green environmental protection, humanistic health.