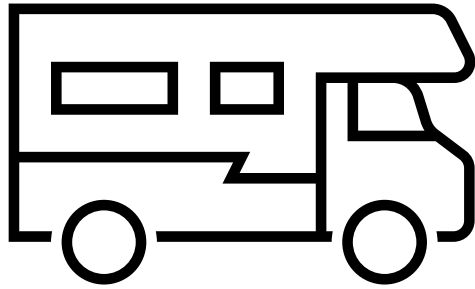


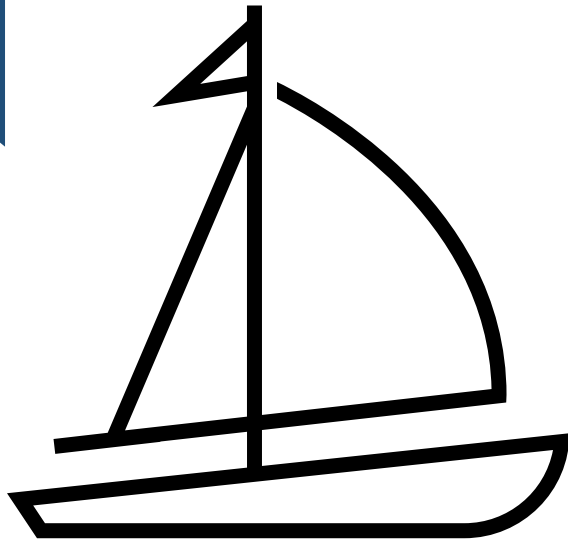
Information RV-parking 2026



Opening: Thursdag April 2nd
Closing: Saturday October 24th

- Included in fee: Electricity, freshwater, servicefacility (incl. toilet/dusch, dishwasher, washingmaschine, dryer and microvawe) and wastehandling for household garbage and septic-disposal (grey/black-water).
- Recycling of glass, paper, plastics and metal to be done at Recycling station (se map). **These must not to be disposed in our facilities!**
- Information/map – please se our info at the entrance.
- Barbeque/grill: Please do so on advised place (see map) – disposable grill is not allowed at our failities.
- We have no possibility to pre-book a spot – only "drop-in" is possible at our RV-parking.
- Tickets are bought in our ticketmachine placed at our clubhouse – only cards accepted. When payment is done – You will recieve a colored label (to be placed in your windshield for easy check by our staff) and a receipt with the code for our servicefacility.
- Only RV:s are allowed at our facilities – no tents or housewagons are allowed – please book a place at some of the campingplaces in Karlsborg.
- Fee: 290 SEK/night
- Welcome to us at CSS and Karlsborg!

Information CSS Guestharbour 2026



Opening: June
Closing: August

- Included in fee: Electricity, freshwater, servicefacility (incl. toilet/dusch, dishwater, washingmaschine, dryer and microwawe) and wastehandling for household garbagde.
- Please note: Our guestharbour is not included in the "Göta Kanal-Ticket"
- Recycling of glass, paper, plastics and metal to be done at Recycling station (se map). **These must not to be disposed in our facilities!**
- Information/map – please se our info at the entrance.
- Barbeque/grill: Please do so on advised place in front of the jetty – disposable grill is not allowed at our failities.
- We have no possibility to pre-book a spot.
- Tickets are bought in our ticketmachine placed at our clubhouse – only card accepted. When payment is done – You will recieve a colored label (to be placed visable on your boat for easy check by our staff) and a receipt with the code for our servicefacility.
- Fee: 290 SEK/night
- Welcome to us at CSS and Karlsborg!



Välkomna!

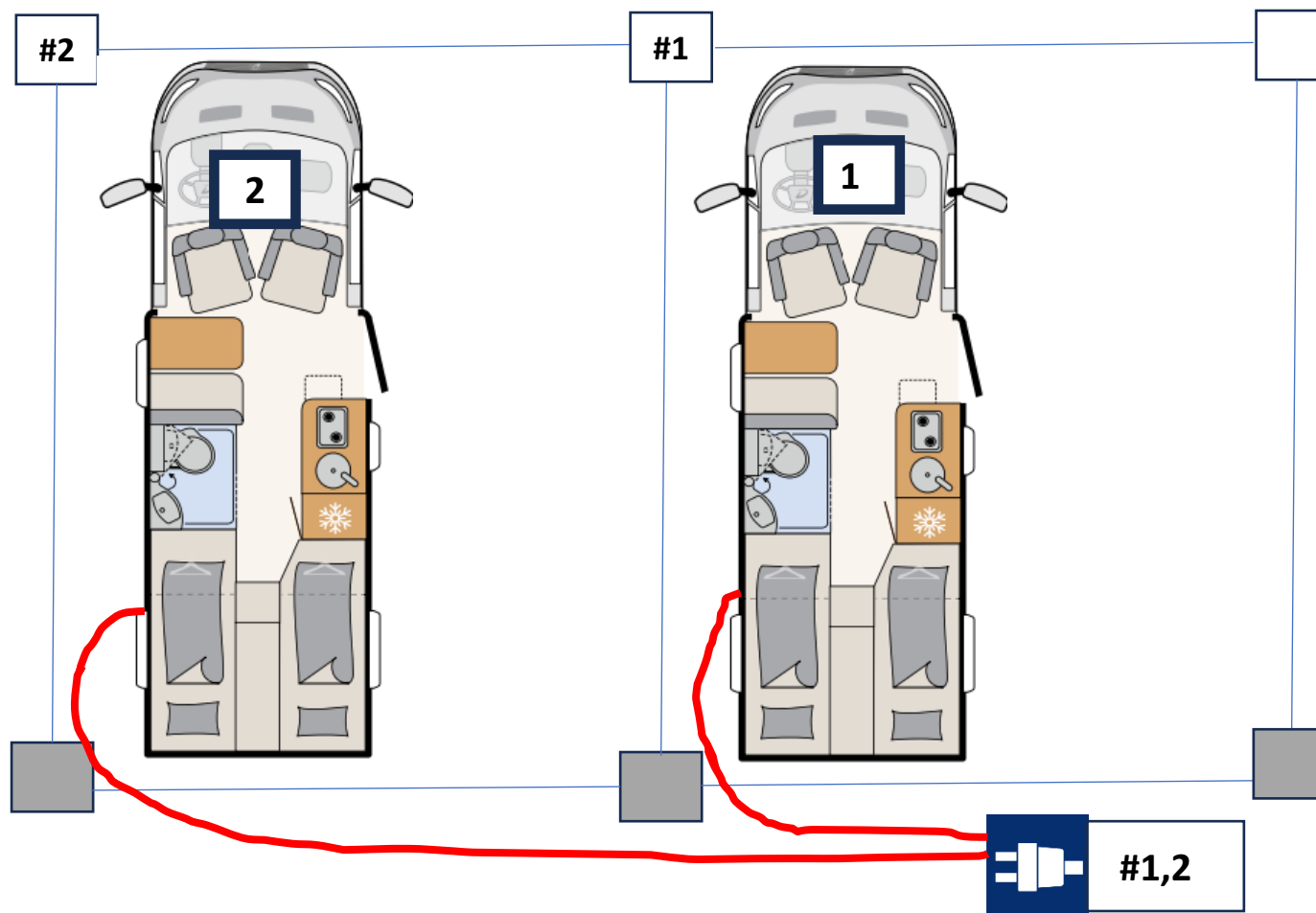
- Vänster framhjul i höjd med vitmålad sten med platsnummer
- Eluttag har platsnummer – se översiktskarta
- Vid behov – använd förlängningskabel max 25 m lång (IP44-klass)
- Håll avstånd till er granne!
- Betalning (med kort), sker vid servicehus i automat.
- Placera färgad biljett i framruta för enkel kontroll

Parkering/Parking/Parkierung - Carlsborgs Segelsällskap



Welcome/Willkommen!

- Left front wheel towards white stone with spotnumber/Vorne rad (links) an der wiesse stein mit platznummer.
- Electric plug are marked with spotnumber/Steckdose hat platznummer.
- If necessary – use extensioncable max 25 m long (IP44). Verlängungskabel max 25 m (IP44) verwenden.
- Keep Distance bewteen RV:s – /Abstand Wohnmobile halten.
- Payment – at Servicebuilding (cards only)/Zahlung – am Servicehaus (nur Karte)
- Ticket (colored) placed in windshield for easy check/Biljett in die Windschutzscheibe gelegt



Internal

Information Carlsborgs Segelsällskap



Endast husbilar får ställas upp hos oss
Mobile homes (RV) only
Nur Wohnmobile



Tält och husvagnar är ej tillåtna
Tents and Caravans not allowed
Wohnwagen und Zelt verboten



Hundar är välkomna men skall hållas kopplade
Dogs are allowed but must be on lead
Hunde willkommen - an der Leine geführt werden



Placering brandsläckare – se karta
Fire extuingisher – see map
Feuerlöscher – siehe Karte



Grillning endast tillåten på grillplatserna – se karta
Grilling/BBQ – only allowed at certain areas - see map
Plätze für Grillen/BBQ– siehe Karte



Svart/gråvatten– **endast på avsedd plats** - se karta
Black/greywater – **only at designated place** – see map
Schwartz/Grauwasser – **nur eine Stelle** – siehe Karte



Badstege finns – OBS: badplats har ingen övervakning
Bathing ladder is available – bathing is at your own risk
Badeleiter ist vorhanden – Baden erfolgt auf eigene Gefahr



34 st eluttag – 230V/10A - märkta med platsnummer
34 pcs – 230V/10A – marked with placenumbers
34 stück – 230V/10A – mit platznummer



34 st platser för husbilar - märkta med platsnummer
34 pcs of spots – marked with placenumbers
34 Ställplätzen– jede mit platznummer



Håll avstånd mellan husbilar
Keep distance when parking your RV
Abstand halten zwischen Wohnmobilen



Endast hushållsavfall får slängas hos oss
Only domestic waste in our garbage bins
Nur Hausmüll im Mülltonne



Glas, metall, plast och papper – slängs på ÅV-station (se karta)
Glass, plastic, metall and cardboard – see map (recycling station)
Glas, kunststoff, metal und papier – see karte (recycling station)



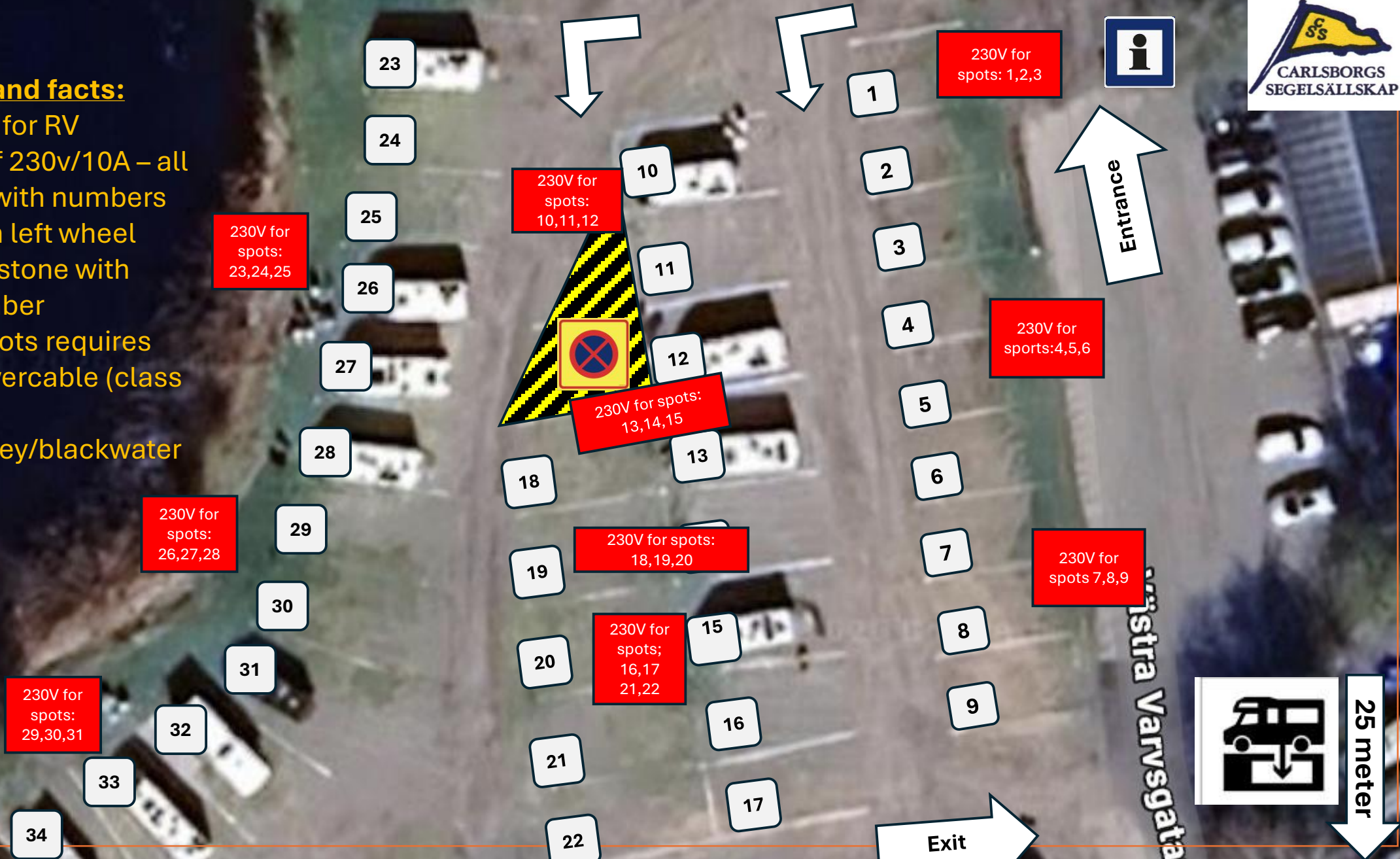
Parkeringsförbud råder på vissa områden - se karta
Parking not allowed on certain areas – see map (red zone)
Parkverbot in bestimmten bereichen – siehe karte (rote Zone)



Dricksvatten – gula slangar på området
Freshwater – yellow hoses
Trinkwasser – gelbe Schläuche

Overview and facts:

- 34 spots for RV
- 34 pcs of 230v/10A – all marked with numbers
- Park with left wheel towards stone with spotnumber
- Some spots requires long powercable (class IP44)
- Empty grey/blackwater after exit





Important parking informations for our Guests:

NO parking allowed on red-marked areas and on the areas around the clubhouse incl. surrounding areas and buildings.

This will affect CSS sailing activities during the season.



Safety and fireprotection at CSS:

- Grill/BBQ only at our grill areas.
- Usage of disposable grill is not allowed at CSS.
- Two fireextinguishers are on our facility – see map for placement.
- Bath – please use bathladder – no supervision in place.
- No diving – shallow area.
- Dogs are welcome but must be on lead.