

# PRECISION SEEDING OF SEAWEED WITH THE SEASEEDER

Gametophytes and small sporophytes of 0,5 mm in size can be effectively seeded on a rope using the SEASEEDER. First the seed is applied and next the adhesive is added, covering the rope fully. This protects the seed from washing off when deploying it to the sea. After a few days the juvenile seaweed adhere themselves to the rope.

## State of the art technology

- Nicely distributed seaweeds over the rope
- Optimal control of seeding density
- Precise dosing of the adhesive, no spilling
- Improved adhesives expected soon for even better emergence %

## The advantages of 2-step direct seeding

- Significant lower costs compared to twine seeding (-80% at 20 km rope)
- Improved attachment of the seaweed seed
- Scalable concept to large scale offshore farming
- Flexible in planning
- Economical and practical in logistics

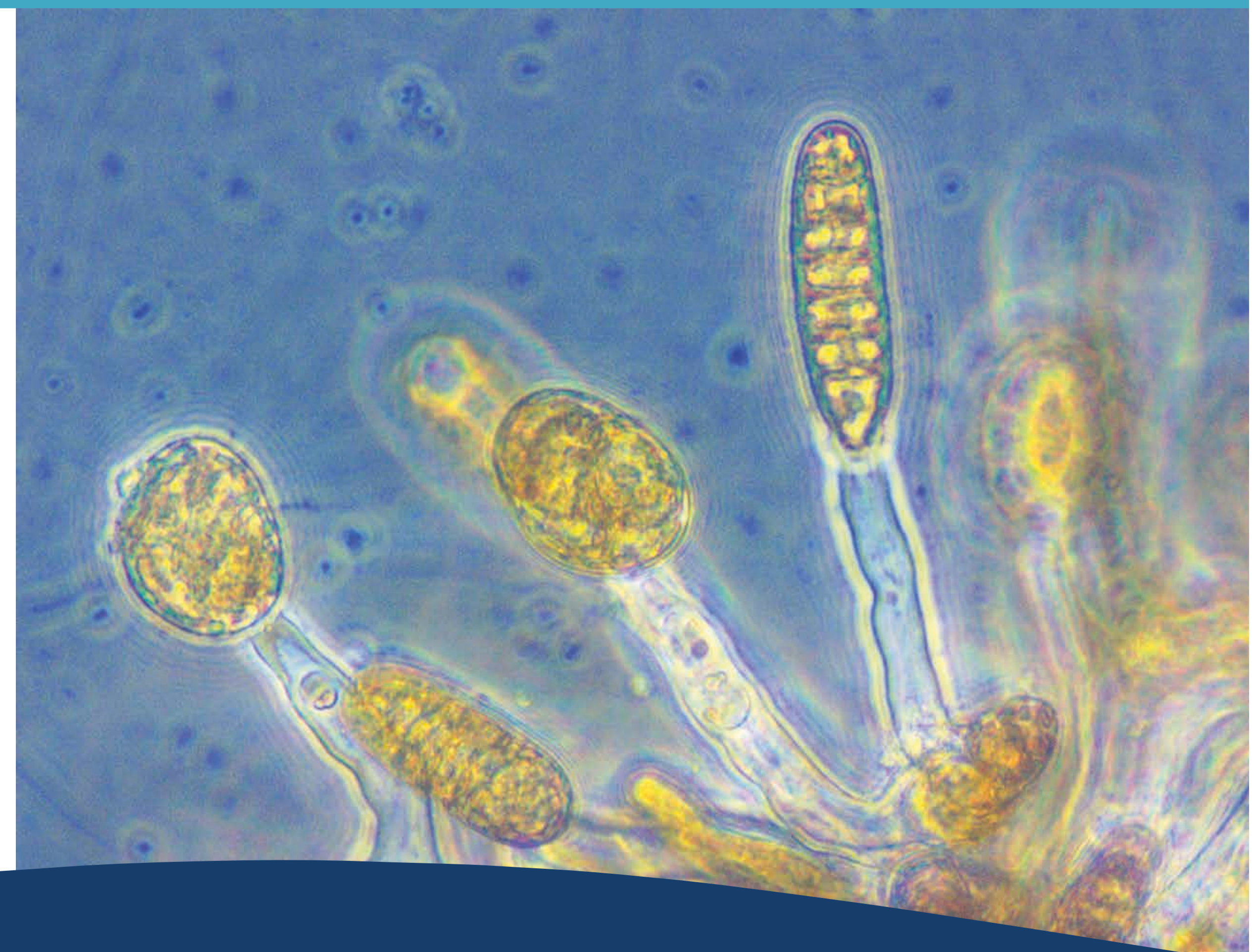
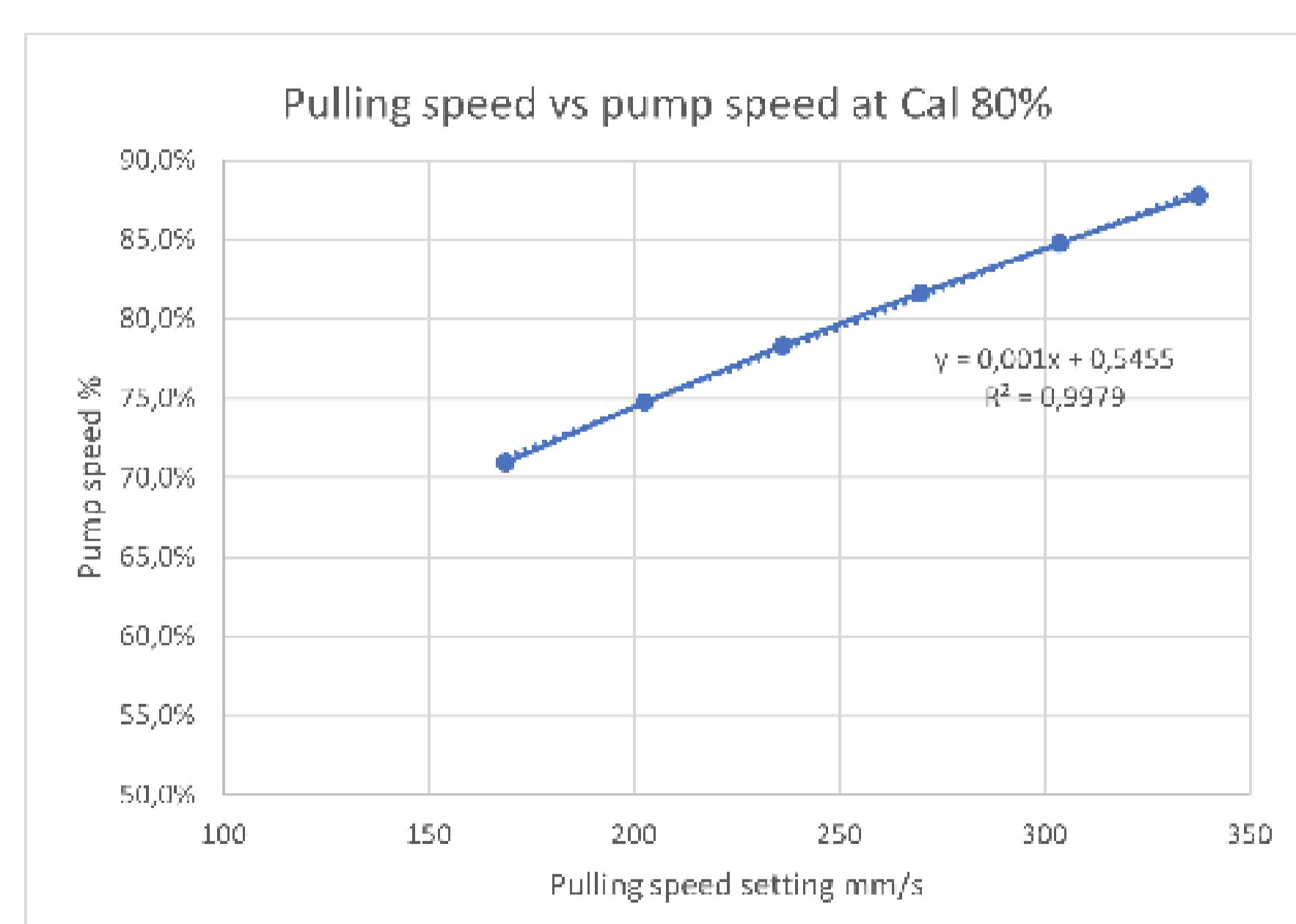


## SEASEEDER: 2-Step Direct Seeding Apparatus

- For seeding of microscopic seaweeds, gametophytes and seaweed fragments at rope substrates
- Continuous and spot seeding
- Manually pulled or optionally motorized
- The motorized SEASEEDER saves 80% labour costs compared to manual direct seeding
- Seeding capacity of 1000 m/hr
- For rope diameters between 8 and 14 mm, also of short pieces of rope and research samples

## Seed and glue dosing

The SEASEEDER is able to adapt the speed of seed and glue dosing to the speed of pulling. Even if pulled by hand, the speed fluctuations are followed precisely in both the seed and the glue dosing. The graph shows the linear compensation of the glue pump to the pulling speed rate.



www.seawiser.com  
job.schipper@seawiser.nl  
+31 6 29 23 78 45

# SEAWISER

