



WITA Fixed-Value Controller SM WR 05 FR/SM WR 10 FR

Product Description

The SM WR FR is a constant or fixed-value temperature controller for heating or cooling systems. Its application area is maintaining of the temperature of the return flow, the regulation of surface heating systems or where constant temperatures are required. It is equipped with a colour display, that shows the basic temperatures during operation. The value displayed on the display constantly adapts to the location, where the fixed-value controller is installed.

Under the control knob for manual operation there are 4 control buttons for setting of the constant or fixed-value temperature controller. When the switch for manual operation is activated, the drive of the temperature controller is switched off to save energy. The drive is equipped with a special assembly flange. By pressing the assembly-/disassembly button, it is possible to easily assemble the fixed-value controller on the mixing valve or other valve or to disassemble it without any extra tools. Due to the pre-assembled connection cables such as mains and temperature sensor, the SM W FR is immediately ready for operation.

The start-up of the controller is carried out with a start-up assistant.

After selecting the parameters, like:

- application (heating or cooling)
- hydraulic system (flow control of return or supply)

the operating parameters can be set.

The controller is designed in such a way, that the regulator is not damaged, even if it is blocked for a long time.

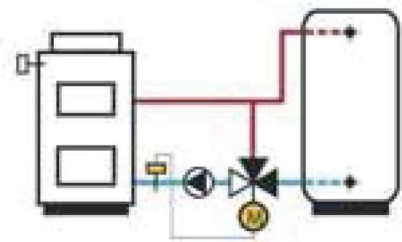


Technical Features

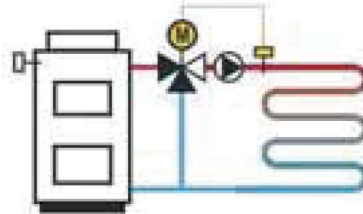
- Easy assembly and setting
- Temperature setting 0 °C - 50 °C
- Any selectable temperature range
- Selection of hydraulic systems
- Selection and setting of the direction of rotation
- Digital display of temperatures
- Setting of heating or cooling mode
- Signalling of the direction of rotation
- Signalling in case of sensor breakage
- PID control of mixing valves and other valves
- Frost and overheating protection
- Blockage resistant

WITA Fixed-Value Controller SM WR 05 FR/SM WR 10 FR

Examples of Application

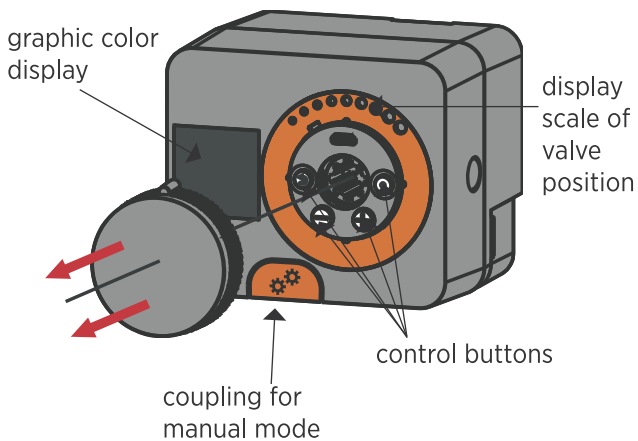


1. Maintaining of return temperature

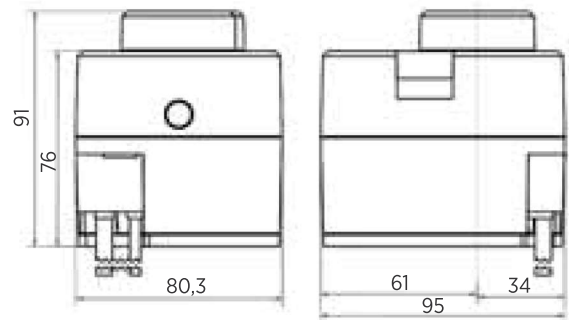


2. Control of surface heating or where constant temperatures are required.

Description



Dimensions



Technical Data

	SM WR 05 FR	SM WR 10 FR
Torque:	5 Nm	10 Nm
Rotation angle:	90°	
Rotation speed:	2 min/90°	
Operating mode:	3-point, PID	
Supply voltage:	230 V AC, 50 Hz	
Power consumption:	max. 5 W	
Standby power consumption:	max. 0.5 W	
Temperature range:	0 °C - 50 °C	
Degree of protection:	I according to EN 60730-1	
Protection class:	IP 42 according to EN 60529	
Dimensions (width x length x height):	95 x 80 x 92 mm	
Weight:	approx. 900 g	
Colour/material:	dark grey/polycarbonate	