

**COURTYARD**<sup>®</sup>  
BY MARRIOTT

Siem Reap Resort



#0609, Road No. 6A, Phum Chongkoesou, Khum Slor Kram (0.02 mi)  
Siem Reap, Siemreab-Otdar Meanchey, Cambodia 17251

+855 63 968 888 | [www.courtyardsiemreap.com](http://www.courtyardsiemreap.com)



GLOBAL LOCATION



CAMBODIA HAS ONE OF THE LARGEST TRAVEL SPEND



ONLY MINIMAL % OF SIEM REAP, CAMBODIA'S LODGING MARKET IS BRANDED

# GLOBAL BRAND. LOCAL SOLUTION.

We are a global hospitality powerhouse, yet we are grounded in the core values of our founder, J. Willard Marriott, Sr. – quality, integrity and the customer. We believe in the strength of relationships – long-term relationships that are mutually beneficial to our associates, our customers and development partners.

As one of the largest lodging market in the world, with only minimal % branded supply, Siem Reap presents products and services that will help modern traveler , **travel brilliantly.**

**COURTYARD**<sup>®</sup>  
BY MARRIOTT

Siem Reap Resort

# SHIFT GEARS TO MORE FUN.

**FOR AMBITIOUS AND ENTERPRISING GUESTS** who see business travel as a driver of personal fulfillment and professional growth, Courtyard by Marriott Siem Reap Resort provides opportunities to shift gears (up or down) to re-energize and be their most creative and successful selves.

COURTYARD BY MARRIOTT SIEM REAP RESORT opened its doors in the historical district of Cambodia as the first Courtyard resort in the country within the Marriott International portfolio.

A resplendent example of MODERN KHMER ARCHITECTURE that radiates contemporary style, the resort is situated near Siem Reap town and the famous Angkor Archeological Park, a UNESCO World Heritage Site

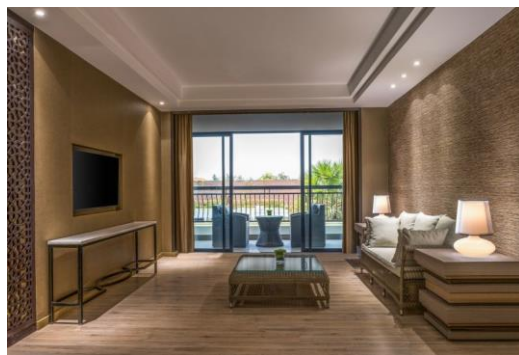
Courtyard by Marriott Siem Reap Resort has 233 stunning guest rooms designed to a CONTEMPORARY STYLE and an exquisite The Angkor Lounge and the resort has 6 state-of-the-art meeting rooms

# Guest Rooms.

GUEST-CENTRED, CONTEMPORARY DESIGN, HIGH QUALITY. Smart value does not mean compromise. This space-efficient, 40-square meter room is not only modern and stylish, it also contains all the essential features that every traveller need to create a haven where they can be productive and restore their energy during their time on the road.

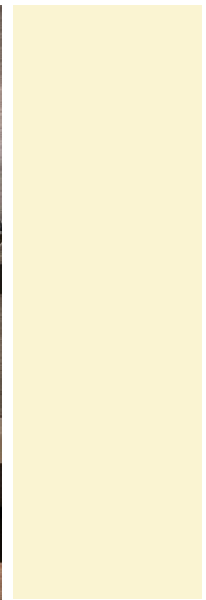
## ALL ROOMS ARE EQUIPPED WITH

- Ultra-comfortable beds for ultimate relaxation
  - 43 inch flat screen television with CNN and movie channels
  - Speaker sound system with Bluetooth connection
  - Wi-Fi access
  - Private balcony with lounge seating
  - Bathroom with separate walk-in-shower
  - Hairdryer
  - Coffee & Tea making facilities
  - Safe deposit box
- 113 Deluxe Rooms
  - 80 Deluxe Pool View Rooms
  - 23 Club Rooms
  - 16 Courtyard Suites
  - One Presidential Suite





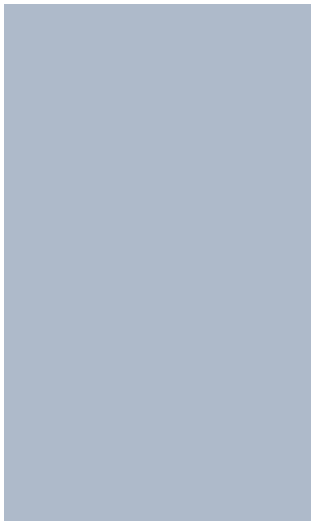
**Deluxe Room**  
40sqm, 65 King, 44 Twin



# Deluxe Room

POOL VIEW

40sqm, 45 King, 39 Twin





# Executive Room

50sqm





# Courtyard Suite

85sqm





# Presidential Suite

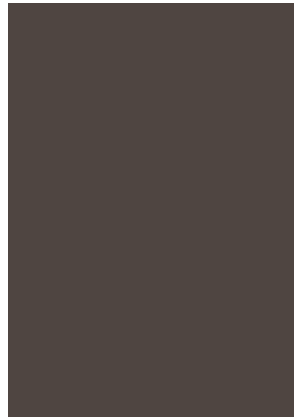
200sqm





# Presidential Suite

LIVING ROOM & DINING ROOM



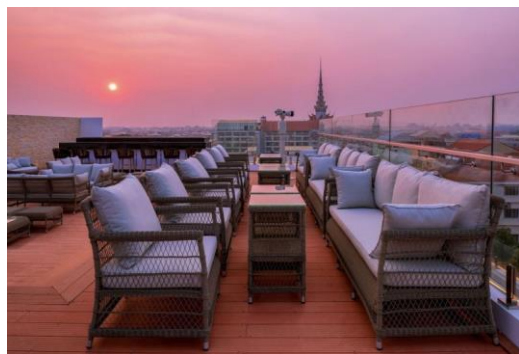
# Public Spaces.

DESIGNED FROM THE GROUND UP FOR THE YOUNG PROFESSIONALS. One of the reasons Courtyard by Marriott Siem Reap Resort have been so successful is that we have an unrelenting focus on understanding the customer, their needs, and designing product and service solutions that exceed their expectations.

Courtyard design is based upon several core needs of the traveller:

- The desire for a **quality product** that they can count on to deliver consistently
- **Stylish and functional room design** that helps guests make the most of their time on the road
- Food & beverage outlet **adapted to local demand**
- **Business support systems**, including modern technology; ample work space in the room; and a meeting facility that helps them be productive on the road
- **Attentive, respectful service** that makes them feel welcome and supported

...All delivered at an exceptional value



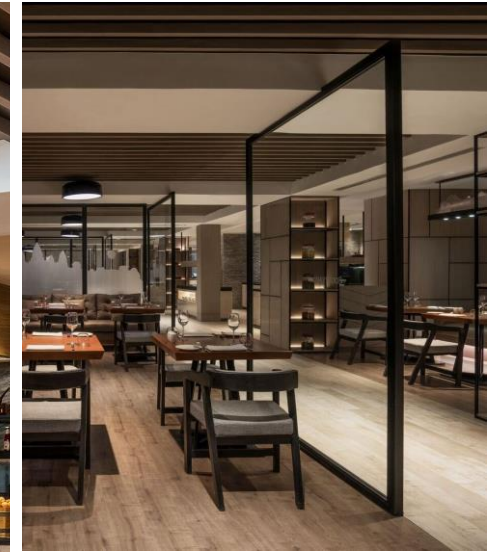
# PUBLIC SPACE OVERVIEW

HIGH-TECH, HIGH-STYLE, GREATER FUNCTIONALITY.



Because the **public space** plays such a critical role in supporting the travelers' needs from dining, to meeting, to socializing, we put extraordinary thought into creating spaces that would exceed their expectations yet also be economical and efficient to build and operate.

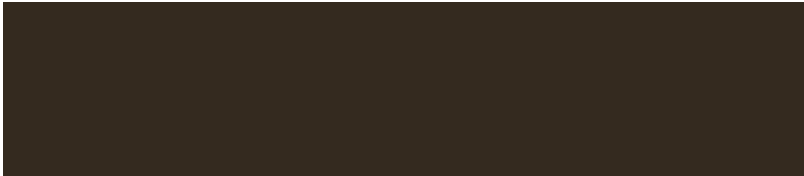




# Lok Lak

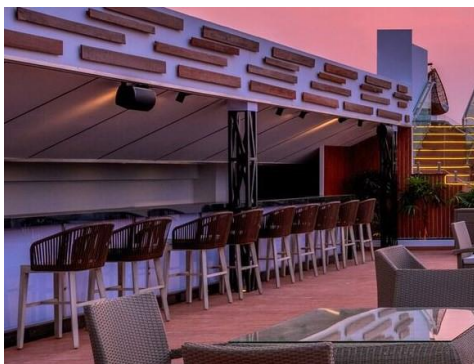
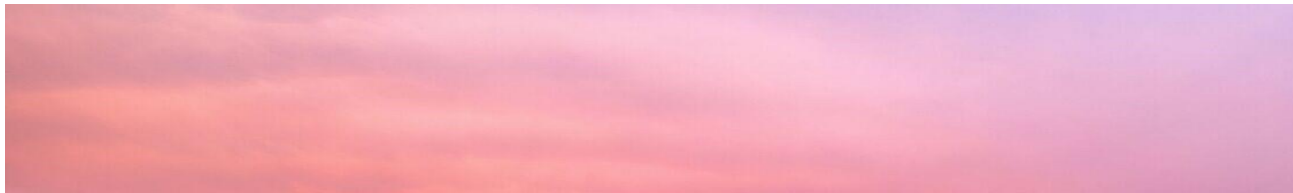
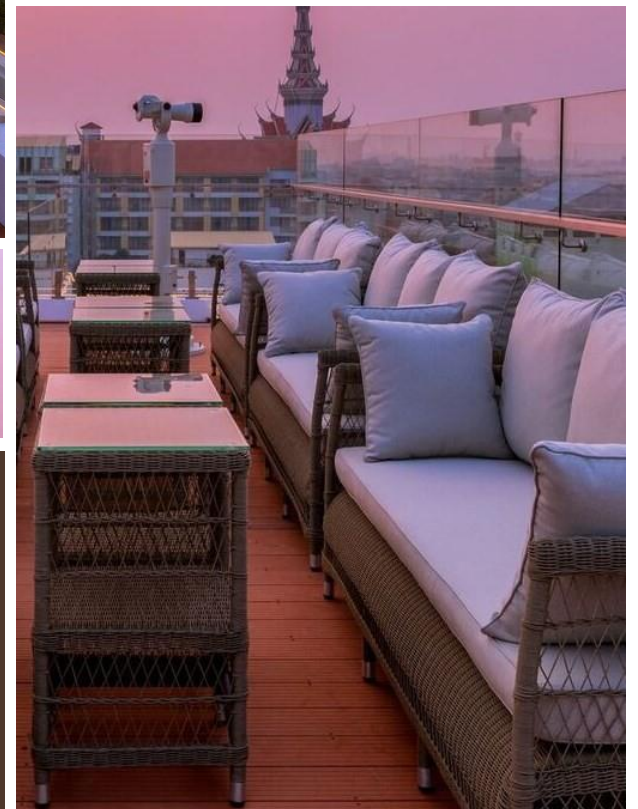
ALL DAY DINING  
RESTAURANT



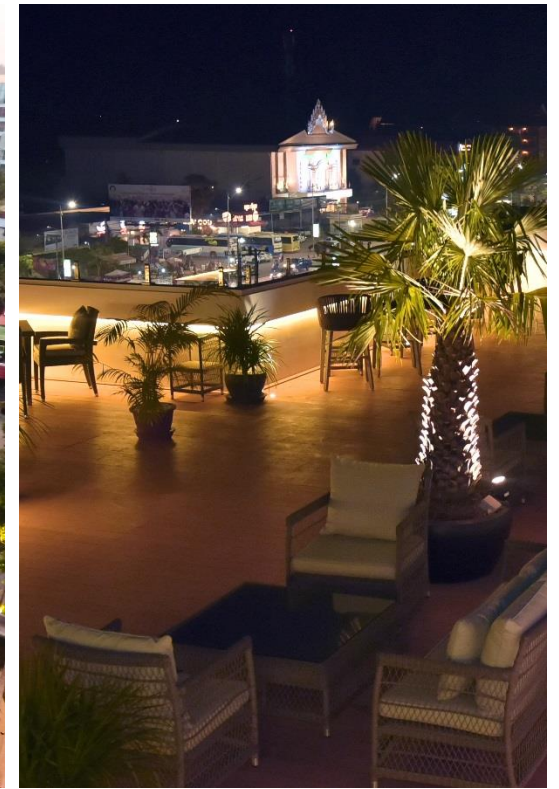


# The Lounge



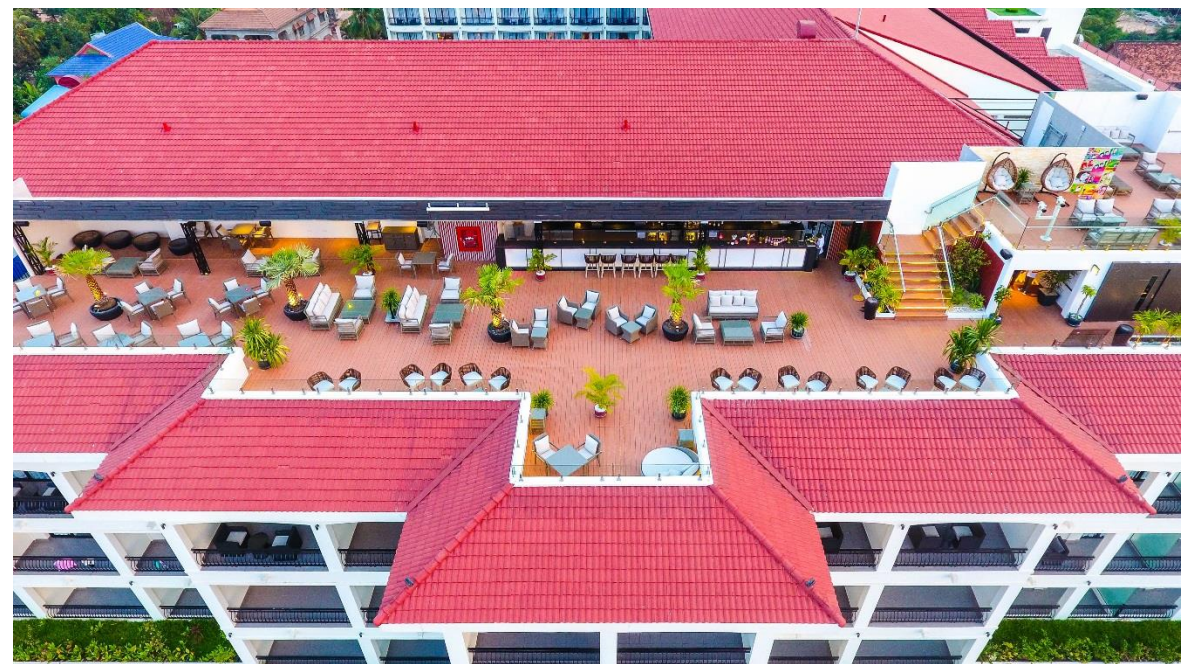


Upperdeck  
ROOF TOP BAR

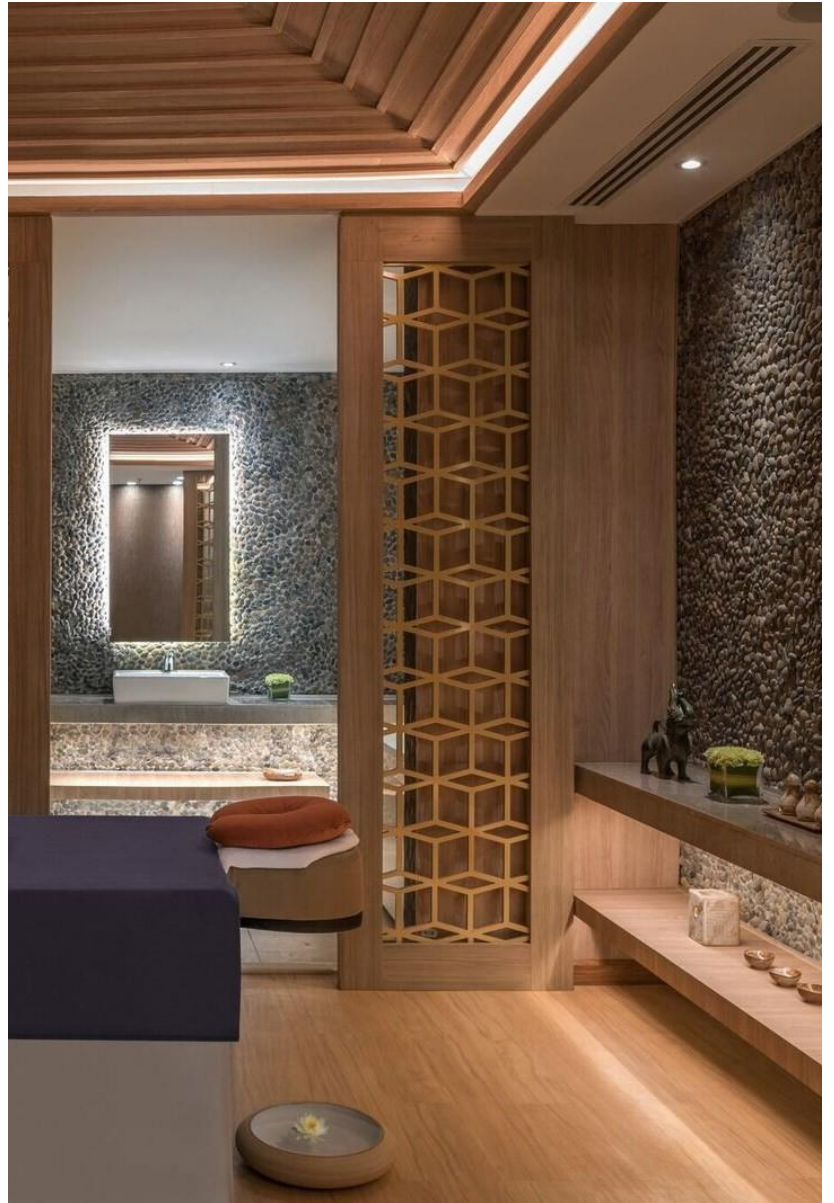
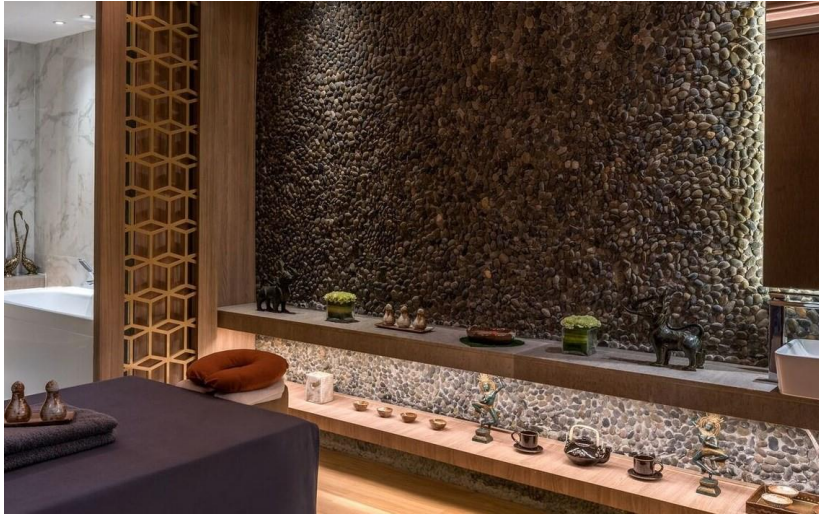


# Upperdeck

ROOF TOP BAR





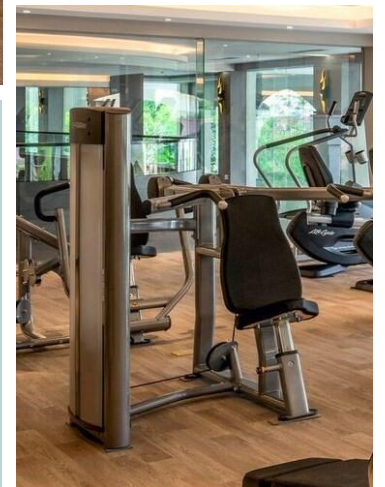


Quan Spa

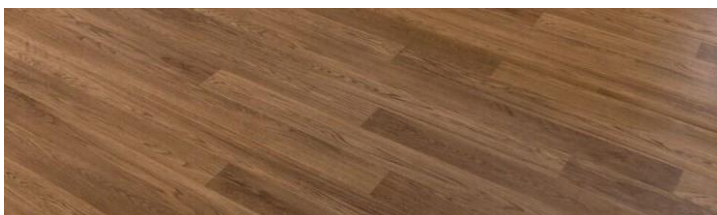




The fitness room contains modern cardiovascular equipment and weights. It is thoughtfully designed with abundant use of natural light, mirrors, and vibrant music.



## Fitness Gym







Swimming Pool



# Meeting Spaces

The 5 THINK SPACES, adjacent to the food & beverage outlet and swimming pool, is designed with modern technology to provide the comfort, privacy and flexibility needed for important meetings.

## FUNCTION ROOM CAPACITY

Room	Dimension (M) (LxW)	Ceiling Height (M)	Area (Sqm)	Banquet Only	Conference	Reception	U Shape	Classroom	Theatre	Cabaret	Bean Bag
The Grand Room + Studio	41.5 x 9.3	5.0	386	230	76	460	74	324	410	270	-
The Grand Room (B)	24 x 9.3	5.0	223	170	76	300	74	180	276	162	-
Studio (A)	17.5 x 9.3	2.5	166	60	96	160	-	120	160	-	-
ThinkSpace 1	8.5 x 6.0	2.5	51	20	18	30	20	30	48	16	16
ThinkSpace 2	12.5 x 6.0	2.5	75	40	24	55	28	42	80	24	20
ThinkSpace 3	8.5 x 7.3	2.5	62	20	18	45	20	45	60	16	16
ThinkSpace 4	12.5 x 6.0	2.5	75	40	30	55	28	42	80	24	20
Board Room	7.15 x 4.6	2.5	33	-	12	-	-	-	-	-	-

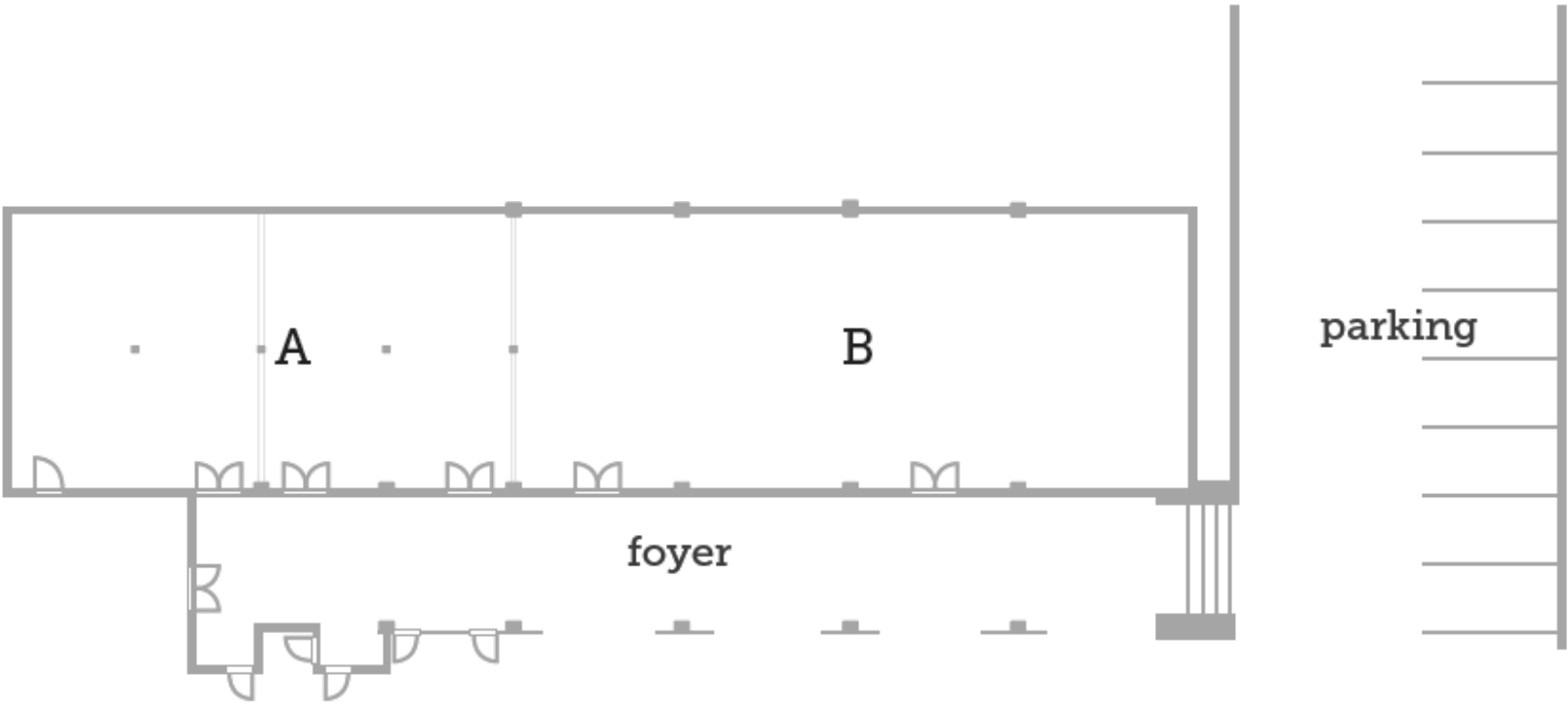
# Grand Room



# Grand Room



# The Grand Room FLOOR PLAN





# Think Space



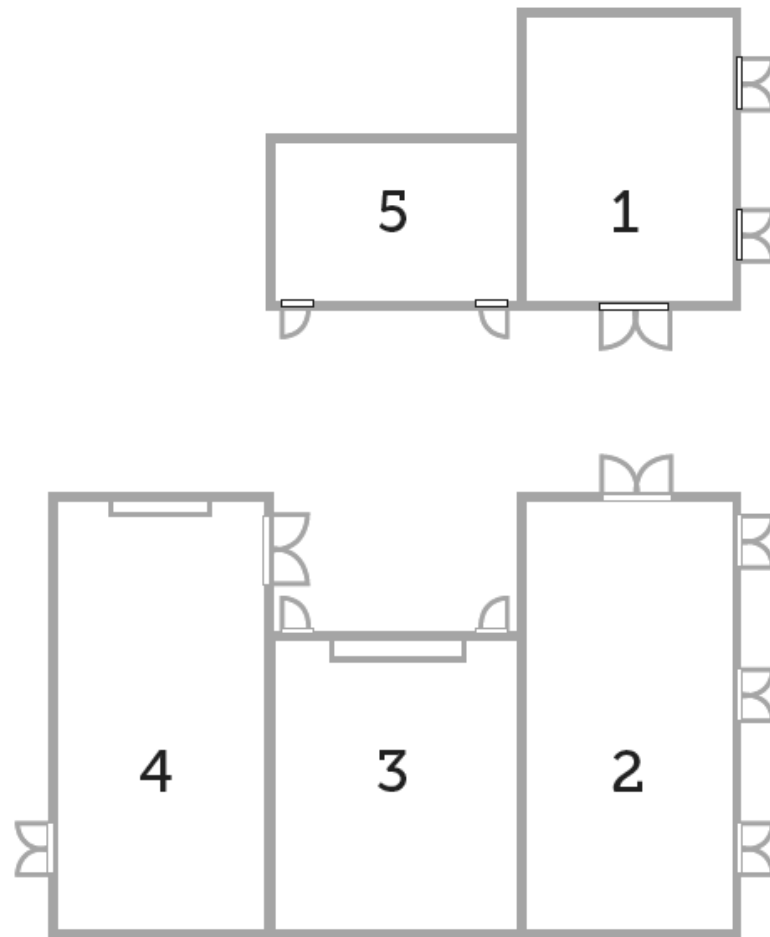
# Think Space

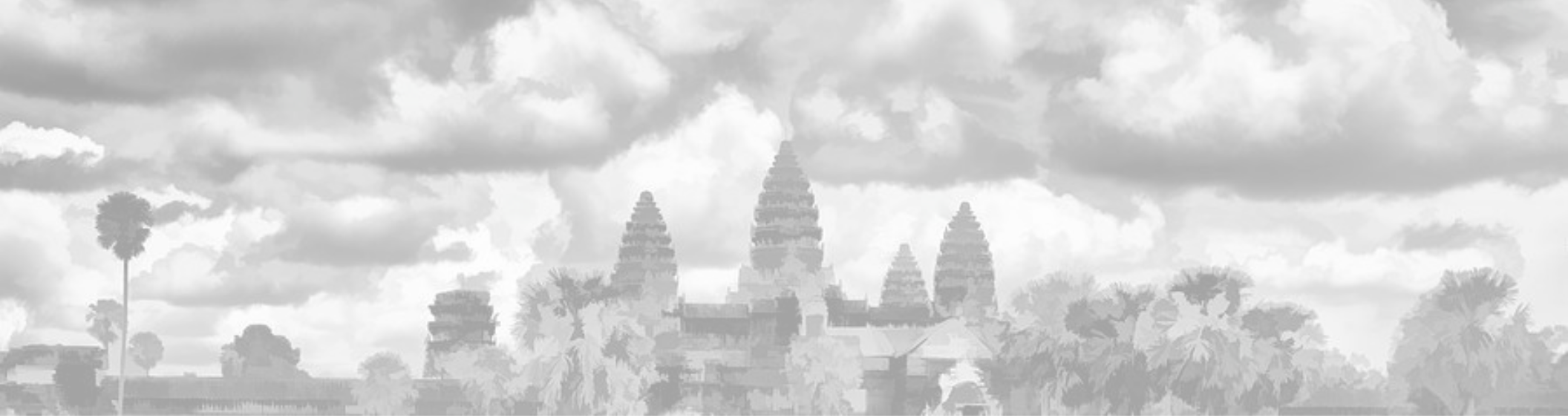


# Think Space



# Think Spaces FLOOR PLAN





**COURTYARD**<sup>®</sup>  
BY MARRIOTT

Siem Reap Resort



#0609, Road No. 6A, Phum Chongkoesou, Khum Slor Kram (0.02 mi)  
Siem Reap, Siemreab-Otdar Meanchey, Cambodia 17251

+855 63 968 888 | [www.courtyardsiemreap.com](http://www.courtyardsiemreap.com)