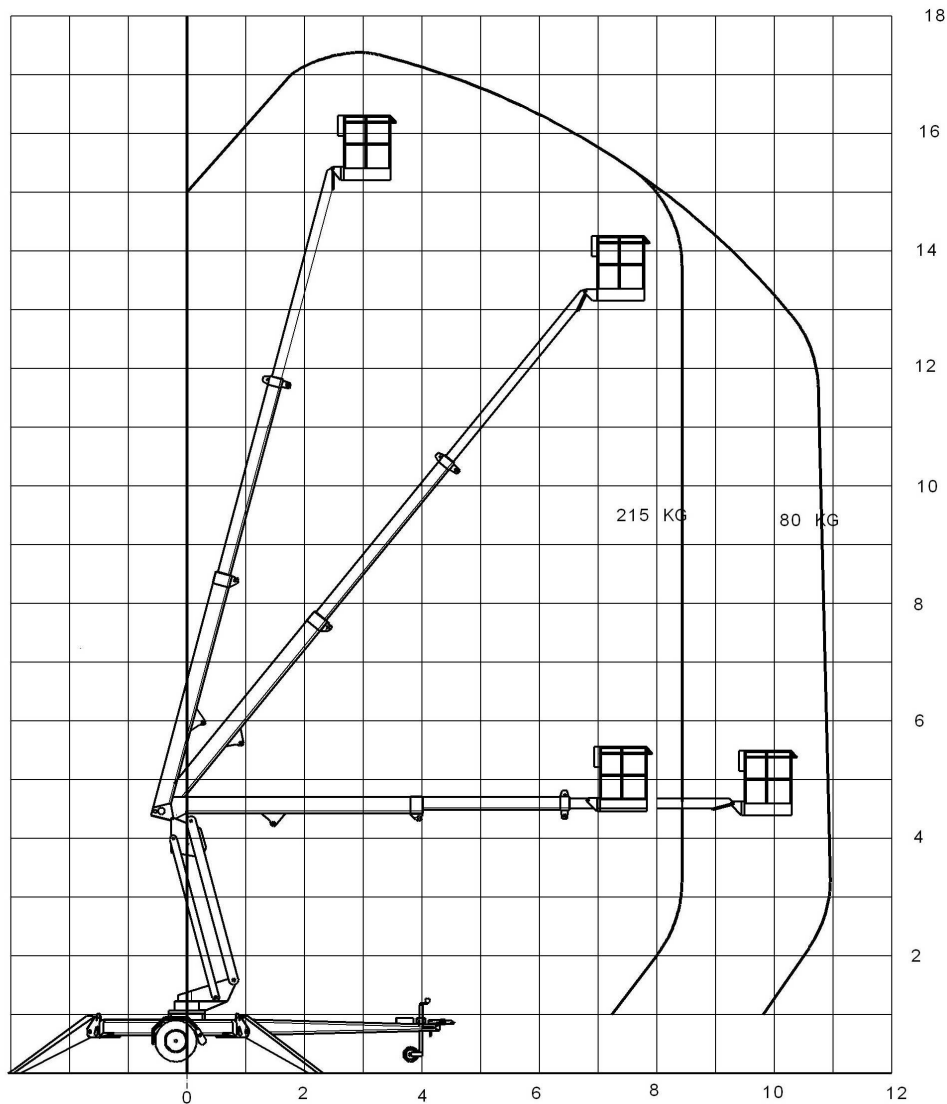


# **DEXTER**



**DEXTER 17 ZA**

# DEXTER 17 ZA



## TECHNICAL SPECIFICATION:

Proportional controls on lift and slewing	
Working height	17.1 m
Platform height	15,1 m
Max safe working load	215 kg / 2 persons
Max outreach 215/80 kg	8 m / 11 m
Cage dimensions / rotation	0,8 x 1,25 m $\pm$ 40°
Power supply	230V / 1,9 kW
Operating width	4,6 m
Transport dimensions L/W/H	6,85 m / 2,05m / 2,35m
Weight	2200 kg

Manufacturer: **JJ-ASENNUS OY, NOKIA, FINLAND**  
Tel. 00 358 3 3422005

[www.jj-asennus.fi](http://www.jj-asennus.fi)