



pagolux® Interieur
metal production



Streckmetalldecke

TE-8 – Nützliche Hinweise

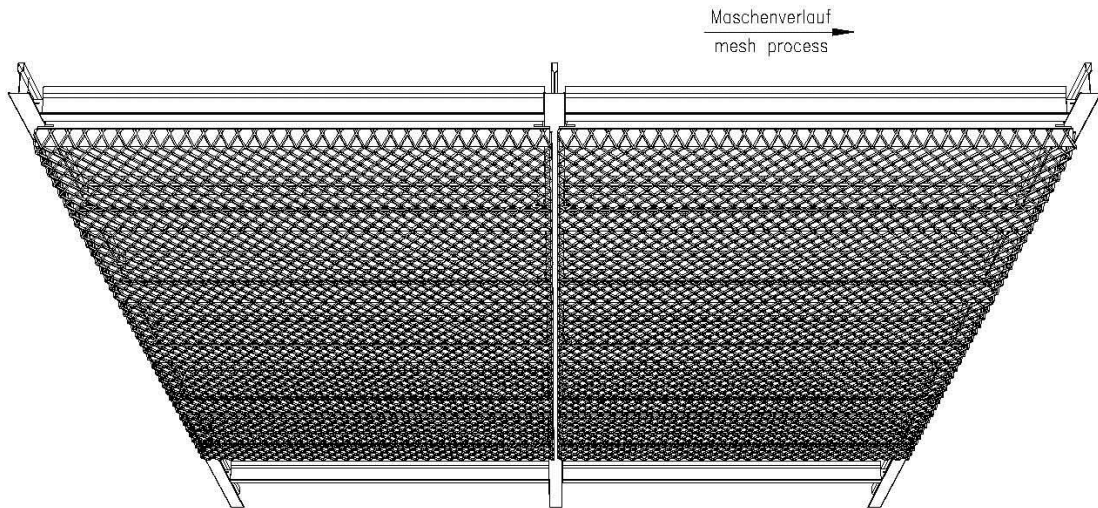
Expanded metal ceiling

TE-8 – Useful advices

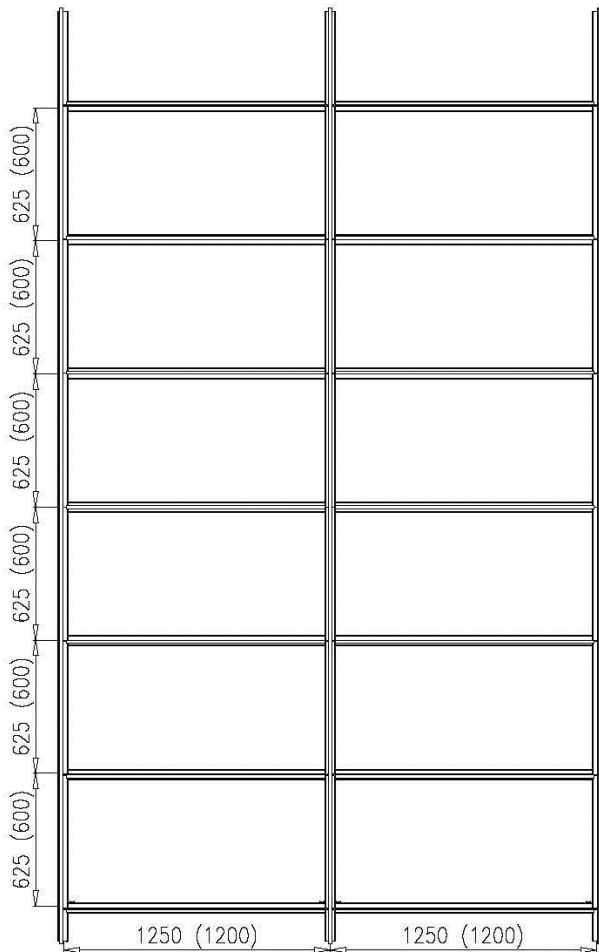
Index

- Structure / main points
- Step-by-Step instruction sheet for installation with wall-bracket
- Determination of cubic measures
- Determination of demand for your calculation
- FAQ – Frequently asked questions

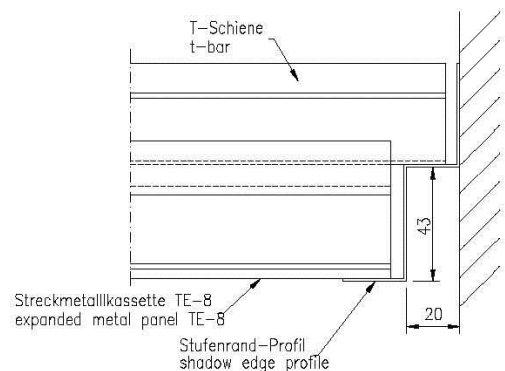
PAGOLUX® Streckmetall - System TE-8 T24
PAGOLUX® expanded metal ceiling TE-8 T24



UK Montage
installation substructure



Detail Wandanschluß mit Stufenrand-Profil
detail wall connection with shadow edge profile



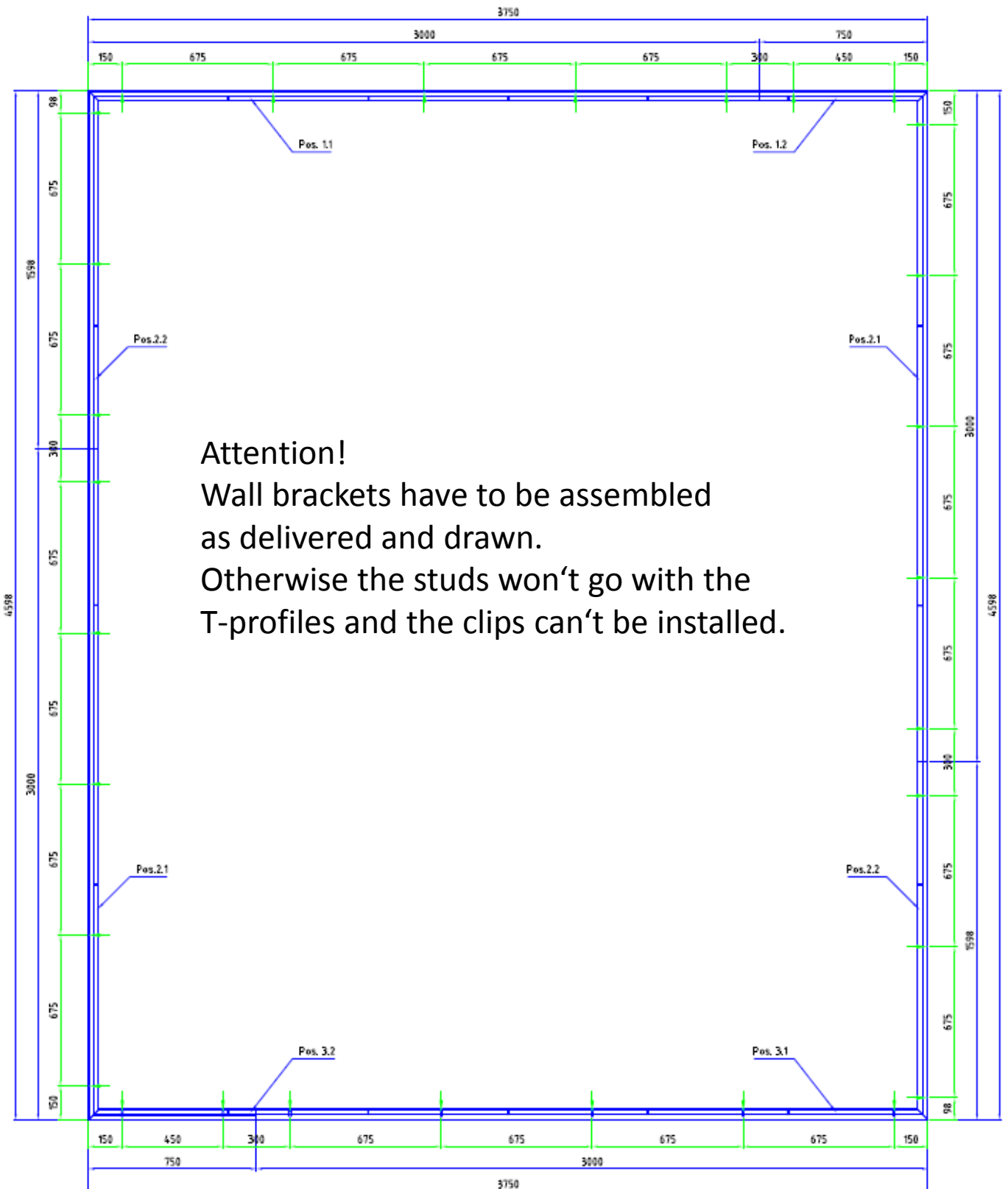
Standard structure with wall-bracket

- 1) Bolt down the wall bracket on the walls
- 2) Then suspend the main bearing profile (3750 mm) and clip in the shorter profiles (1250 mm) to build a grid of 625 x 1250 mm
- 3) Put two traverses on the main bearing profile, but only in areas where you put panels with cutouts later.
- 4) Afterwards put the technical panels on the traverses to fix the lamps
- 5) At last, the panels have to be hooked in the T-profiles.

Step-by-Step instruction sheet

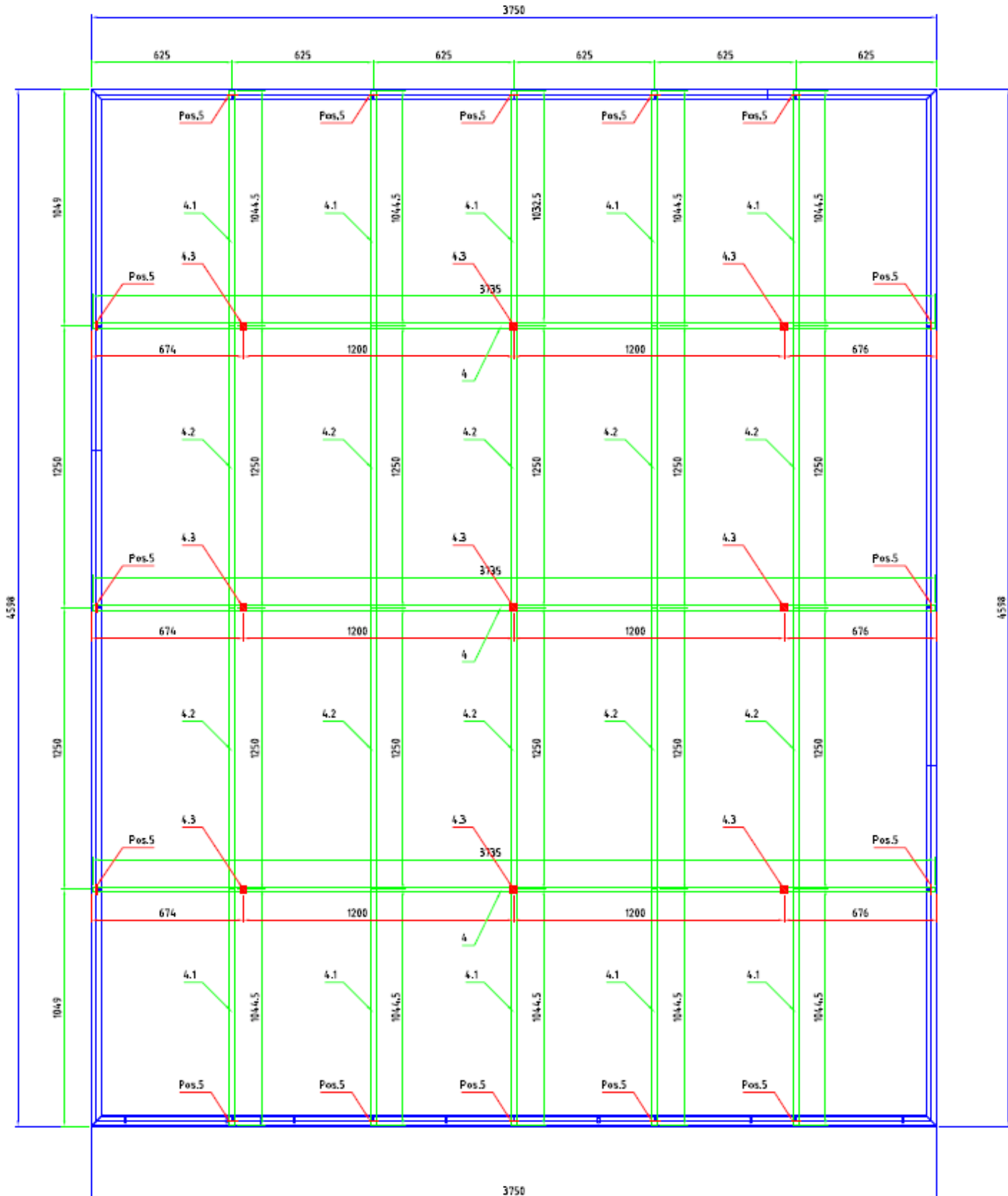
-Attention ! Room size is exemplarily-

Attention!
Wall brackets have to be assembled
as delivered and drawn.
Otherwise the studs won't go with the
T-profiles and the clips can't be installed.



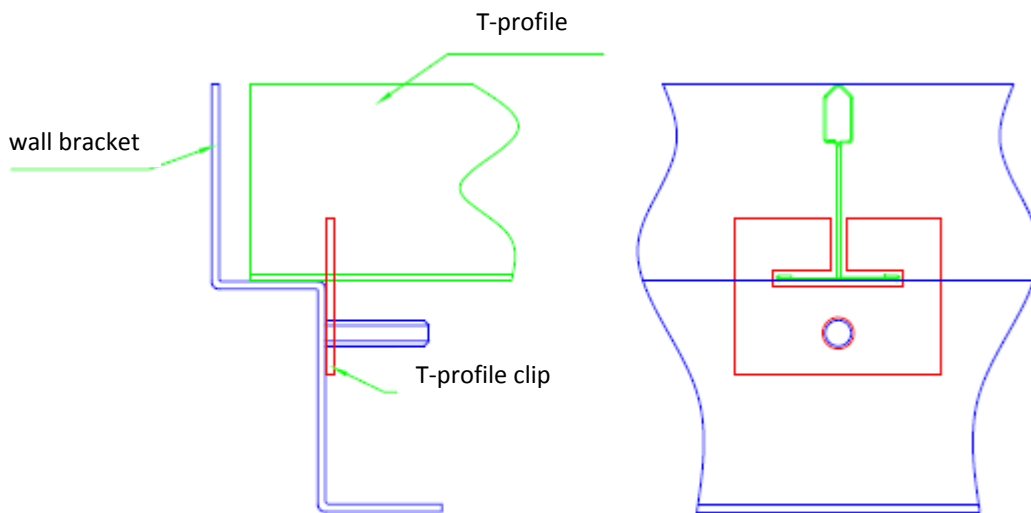
Step-by-Step instruction sheet

-Attention ! Room size is exemplarily-



Step-by-Step instruction sheet

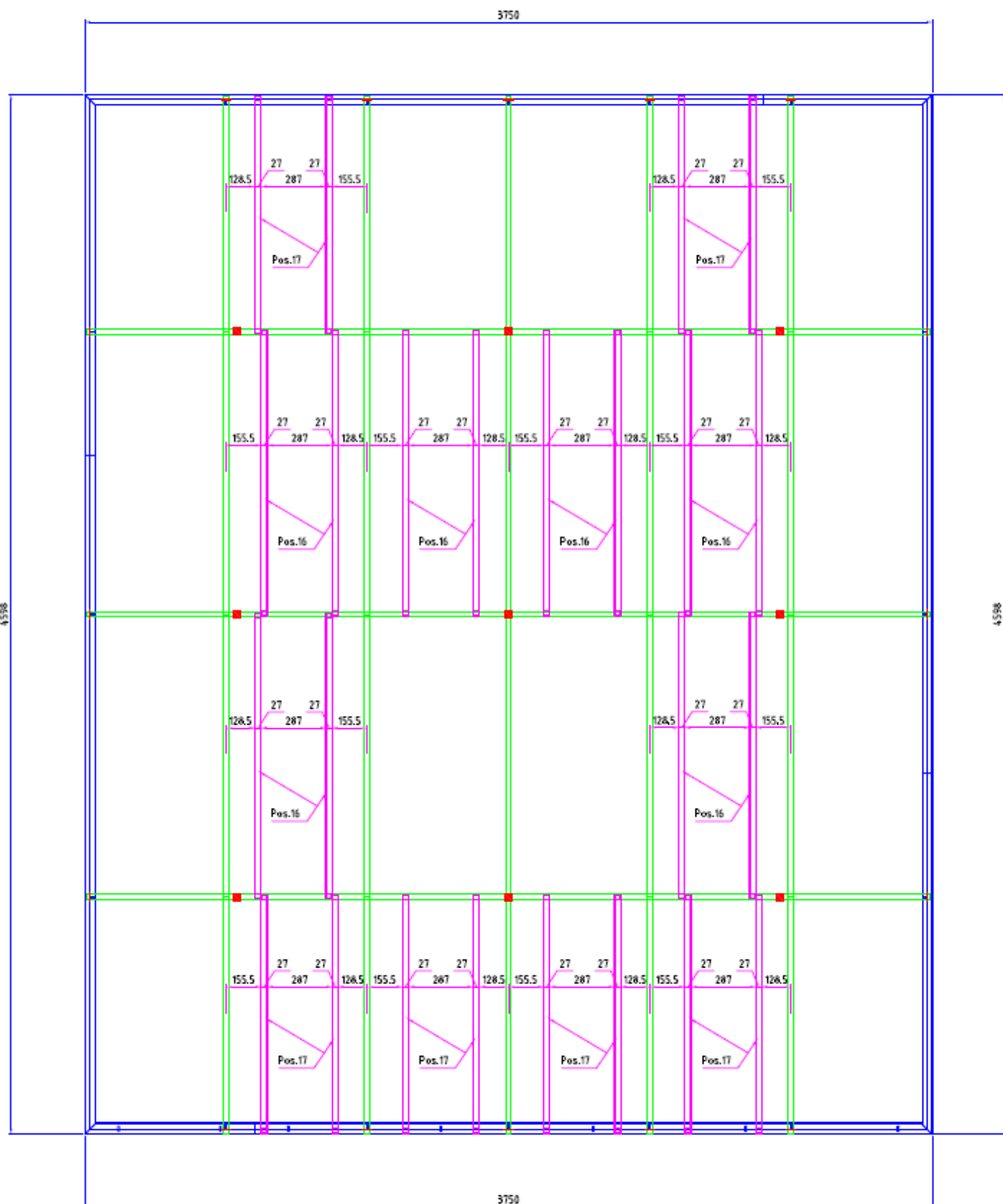
-Attention ! Room size is exemplarily-



To assemble the T-profiles please first slide on the clip and then slide on the clip on the studs and bolt it down.

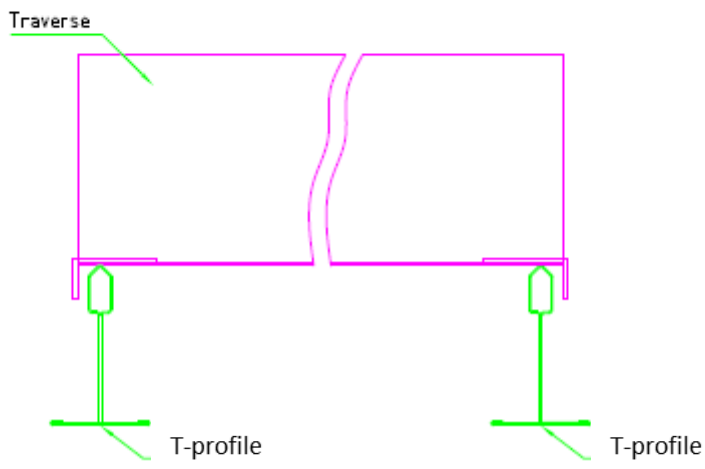
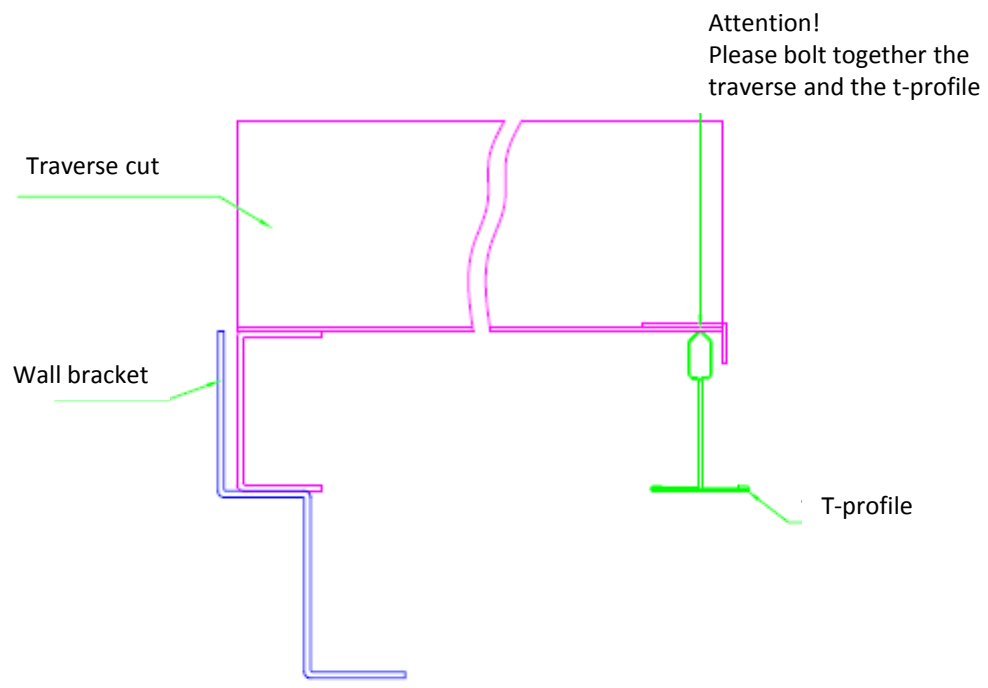
Step-by-Step instruction sheet

-Attention ! Room size is exemplarily-



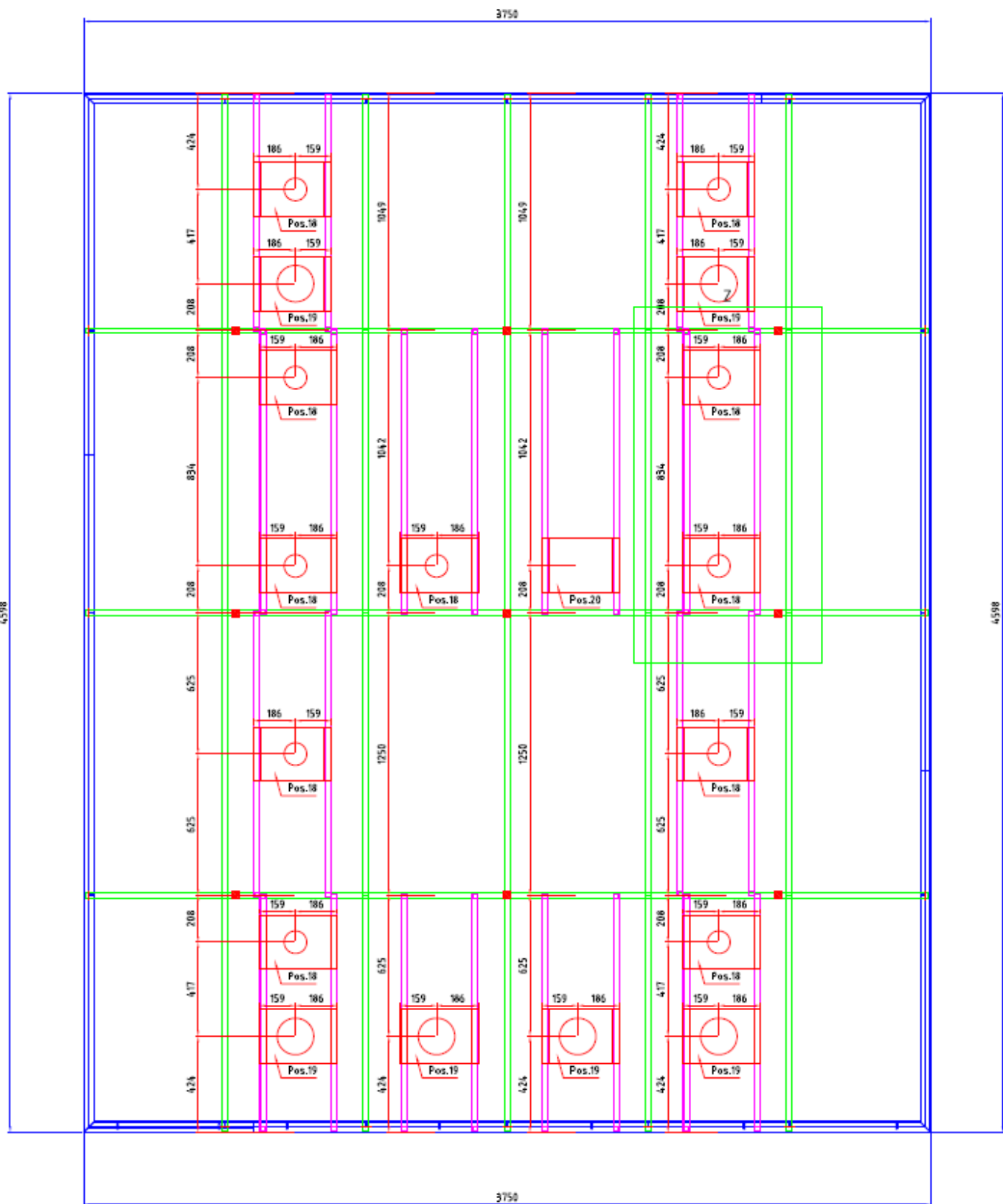
Step-by-Step instruction sheet

-Attention ! Room size is exemplarily-



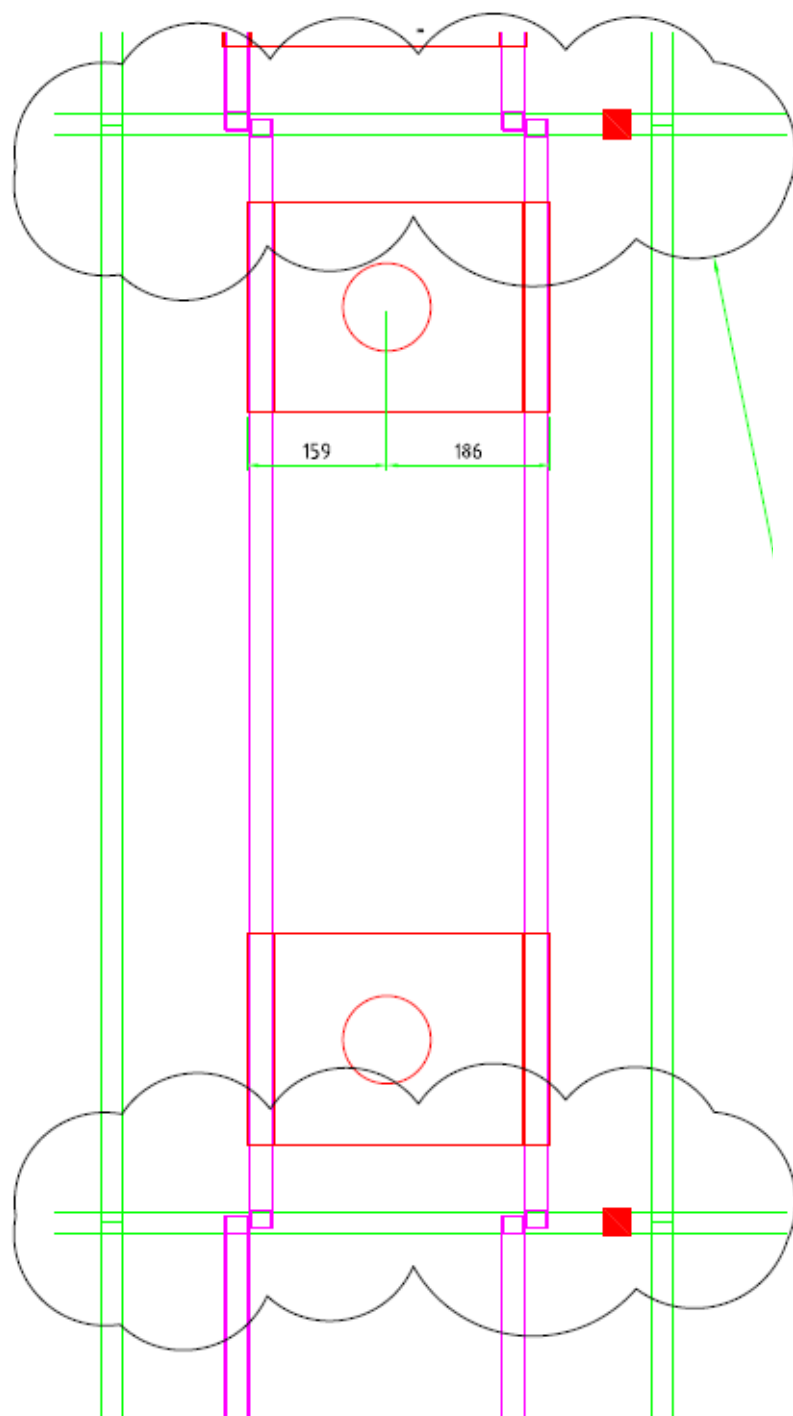
Step-by-Step instruction sheet

-Attention ! Room size is exemplarily-



Step-by-Step instruction sheet

-Attention ! Room size is exemplarily-

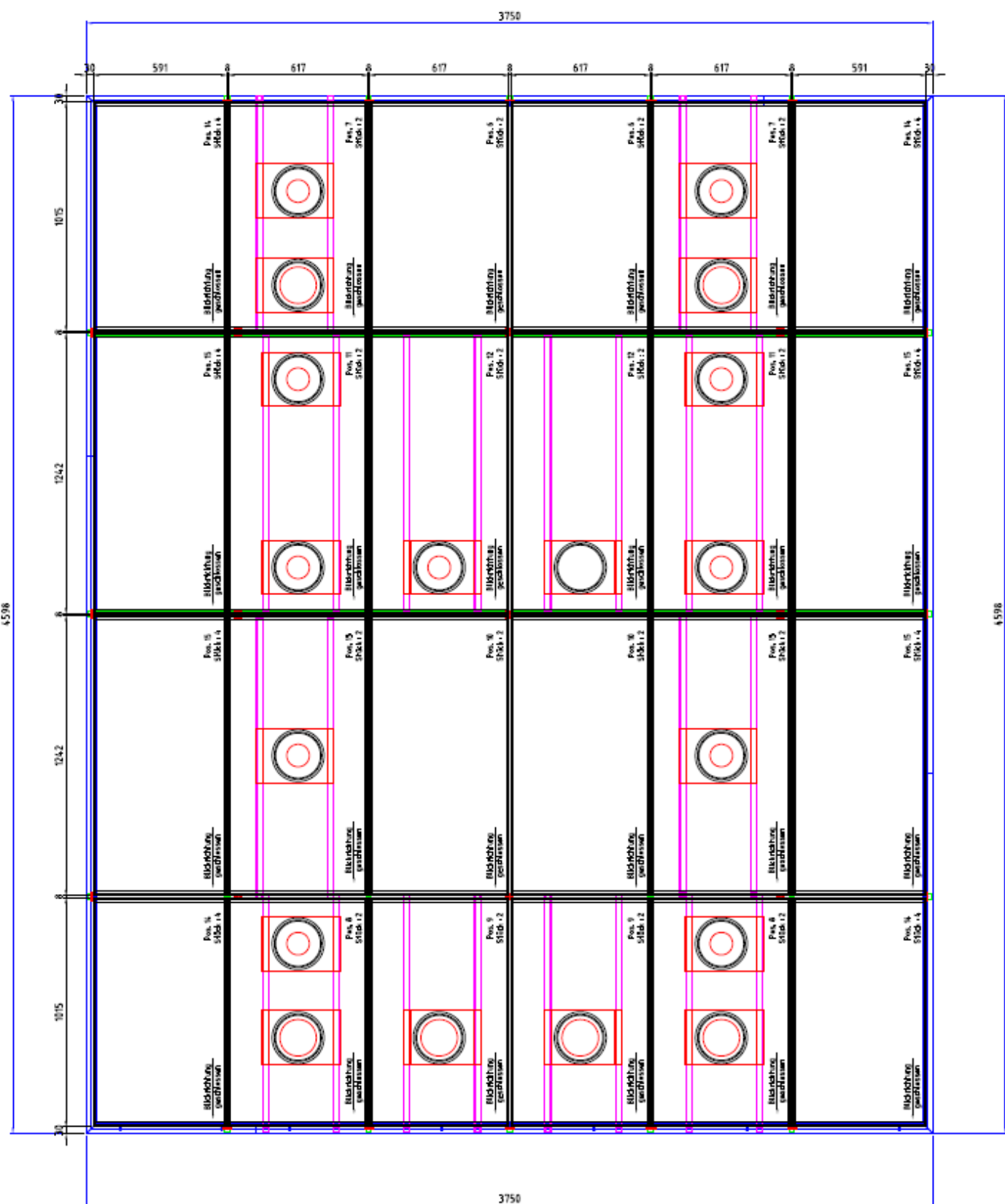


Attention!

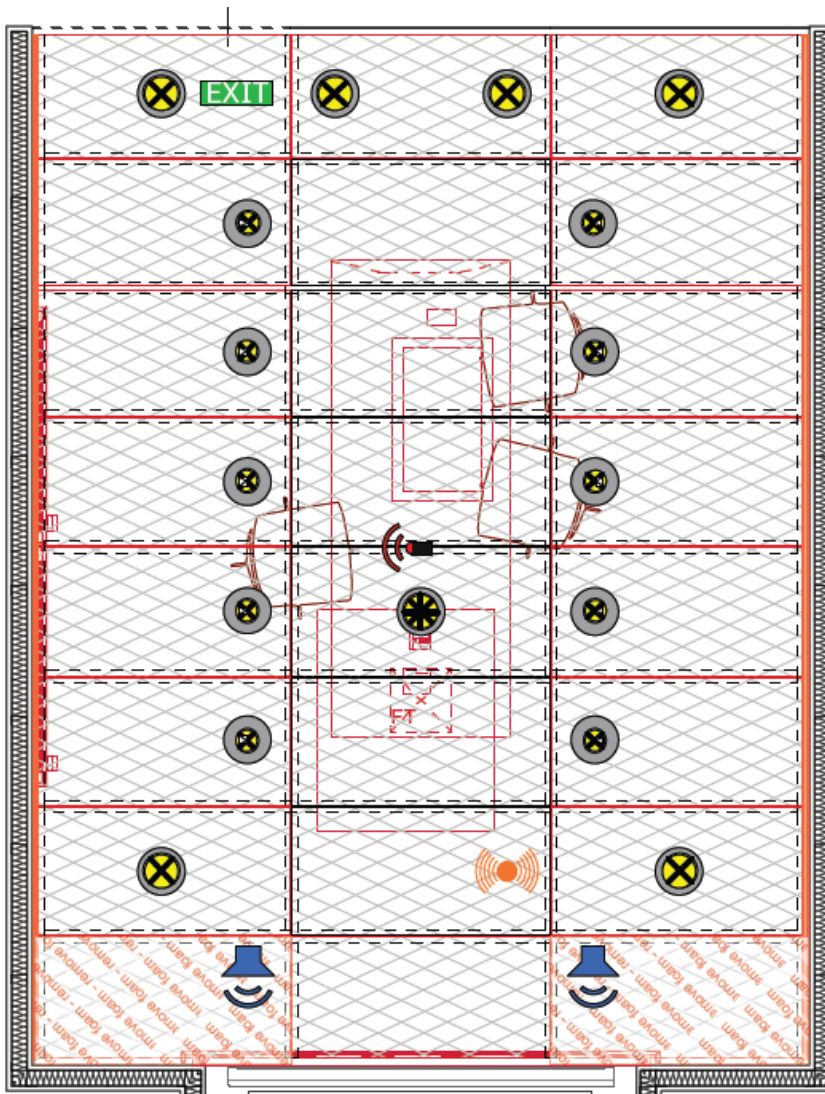
1. The traverses have to be installed staggered.
2. The cutout is not centric.
3. Please consider the direction.

Step-by-Step instruction sheet

-Attention ! Room size is exemplarily-



Determination of cubic measures



In this case there is no wall bracket.

The panels have to be fixed with additional t-profiles.

Please consider, that it's important to connect the T-profile construction with a L-bracket (not included) to hold the construction steady.

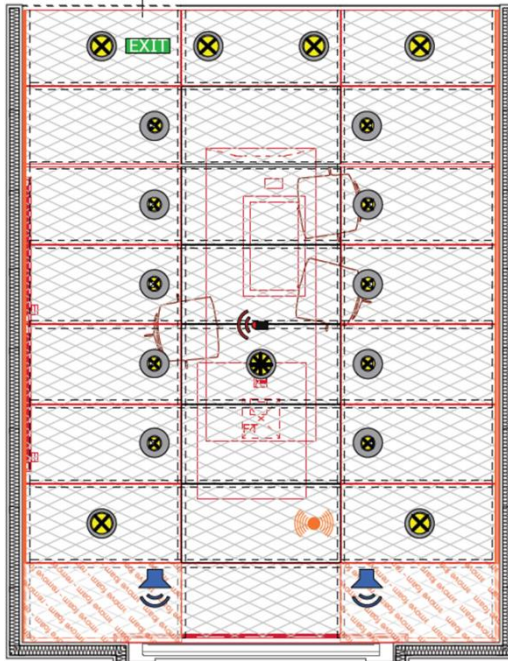
To determine the cubic measures:

size axis a x number of panels + 24 mm (T-profile)

+ 2 x requested wall joint

Example: $625 \text{ mm} \times 3 + 24 \text{ mm} + 2 \times 30 \text{ mm wall joint}$
 $= 1959 \text{ mm}$

Determination of demand for your calculation für Ihre Kalkulation



Expanded metal panels

as shown in the ceiling plan

Change of position
Expanded metal + fleece

main position: centric ; panels with other
cutout positions /combinations = change of position

T24 – main profile 3750 mm

along the short side of the panels
with wall bracket : $16 \times 0,625 = 11,25 \text{ m} = 3 \text{ pcs}$ (rounded up)
without wall bracket: $32 \times 0,625 = 22,5 \text{ m} = 6 \text{ pcs}$ (rounded up)

T24- profile 1250 mm

along the long side of the panels
with SWW: $21 \times 1,25 = 26,25 \text{ m}$
without SWW: $27 \times 1,25 = 33,75 \text{ m}$

Wall bracket 2500 mm:

= circumference of the room
here : $16 \times 0,625 + 6 \times 1,25 = 17,5 \text{ m}$

Technic panel:

one technical panel / cutout

Traverse:

2 pcs / panel with cutout (irrelevant how many)

T-profile clip:

in wall areas, where T-profile and wall bracket meet

FAQ – Frequently asked questions

Which lamps require which technic panel?

According to the AUDI catalogue there are three different Siteco lamps:

- Downlight Customer Room Lunis 2 technic panel 162 mm
- Wallwasher Materialpresentation Lunis 2 technic panel 100 mm
- Table Light Lunis 2 technic panel 100 mm

How can I cut the panels ?

The panels can be cut on site by means of an angle grinder, provided that you use the wall bracket.

If you use t-profiles in the border areas, it's not possible to cut the panels.

How can I integrate an air conditioner?

The panels can be cut on site. What should be checked first is, if there is enough bearing surface, where the panel can be put on.

Of course the installation heights have to match.

How can I cover the view into the ceiling void when using glass walls?

The easiest way is to install a foil (please check if this solution is conform to AUDI guidelines).

How can I calculate the installation of the TE8 ceiling?

For the installation of the TE8 ceiling you can calculate ca. 45 – 60 minutes / sqm.