



# MEDWAY OPEN STUDIOS

& ARTS FESTIVAL  
SAT 6 - SUN 14 JULY 2019  
[MEDWAYOPENSTUDIOS.ORG](http://MEDWAYOPENSTUDIOS.ORG)



Nucleus Arts Centre

# THE GARDEN ARTS CENTRE IN THE HEART OF CHATHAM

Gallery • Café • Studios

272 High St, Chatham ME4 4BP



Nucleus Arts

01634 812108

[www.nucleusarts.com](http://www.nucleusarts.com)

The Halpern Charitable Foundation Registered Charity no. 1096478

## HELLO!

Welcome to the 8th year of Medway Open Studios! We hope you enjoy exploring the venues and meeting the artists at this years Festival.

I started the Festival to prove what amazing talent and creativity there is right here in Medway - it certainly fulfills its aim this year! Open Studios is a perfect way to get to know more about your Towns and the people.

We're thankful to partner again with City of Rochester Society whose support provides a huge boost to the Festival.

**Heather Burgess**, Festival Director  
heather@medwayopenstudios.co.uk

Share your Festival pictures and experiences with us –



Follow us and use our hashtags -  
#mosaf19 #medwayopenstudios

## Prize draw!

### A simple competition to win £100 to spend with your favourite Medway artist

*Visit six or more venues, ask a host artist to sign a box below, then return this page to Medway Open Studios, c/o Sun Pier House, Sun Pier, Medway Street, Chatham, Kent, ME4 4HF. Entries will be entered into a prize draw to win £100 to spend with any artist from the festival. Deadline for entries is 1 August.*

Artist/ venue:

Signed:

Artist/ venue:

Signed:

Artist/ venue:

Signed:

Artist/ venue:

Signed:

Artist/ venue:

Signed:

Artist/ venue:

Signed:

### Your contact details

Name:

Address:

Telephone:

Email:

How did you learn about the Medway Open Studios & Arts Festival?

What did you enjoy the most?

# MEDWAY OPEN STUDIOS

STROOD

ROCHESTER  
CASTLE

ROCHESTER  
CATHEDRAL

ROCHESTER

2  
BORSTAL ST

3  
ST MATTHEWS DRIVE

4  
FRINELL CL

5

SHORTS REACH

8

6

RIDLEY RD

7

LANGDON RD

9

MAIDSTONE RD

VINES LN

12

CROW LN

10

11

CORPORAL

13

HIGH ST

ESPLANDE





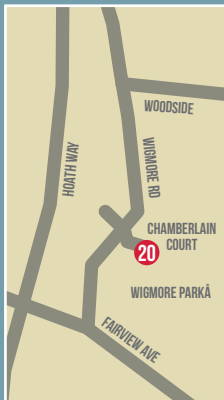
## The Venues!

There are 20 venues taking part in this year's Open Studios. Each venue has its own opening times and access. Please check the listings before visiting and contact the venue in advance if you have any questions.

To view the digital Google Map of all the venues visit the website [www.medwayopenstudios.co.uk](http://www.medwayopenstudios.co.uk)

Maps are not to scale and are a guideline only

# MEDWAY OPEN STUDIOS



To view the digital Google map visit the website –  
[www.medwayopenstudios.co.uk](http://www.medwayopenstudios.co.uk)

**MEDWAY  
OPEN  
STUDIOS**  
& ARTS FESTIVAL

# NEXT YEAR! THE 2020

**MEDWAY OPEN STUDIOS  
FESTIVAL** will take place on  
**SAT 4 to SUN 12 July!**

*Registration will open January 2020 on the website  
[www.medwayopenstudios.org](http://www.medwayopenstudios.org)*

**MAP 1****LINDA J SMITH****9 Weston Road, Strood, ME2 3EZ**

My work is inspired initially by shapes, colours, textures and tones found in land and seascapes. I make notes and sketches then return to my studio to organise compositions. Colours, tones and painting methods take over until I feel I have created a satisfactory response.

	SAT	SUN	MON	TUE	WED	THU	FRI	SAT	SUN
FROM	10am	10am	X	X	10am	X	X	10am	10am
UNTIL	5pm	5pm	X	X	8pm	X	X	5pm	5pm

✉ [smith.weston@talktalk.net](mailto:smith.weston@talktalk.net) ☎ 01634 724683**MAP 1****PETER SMITH****9 Weston Road, Strood, ME2 3EZ**

The paintings on show are inspired by visits to coastal locations, where memory and record of visual events translate to the canvas in a personal way. Experiment and freedom to practice over time, and where colour and form change constantly.

	SAT	SUN	MON	TUE	WED	THU	FRI	SAT	SUN
FROM	10am	10am	X	X	10am	X	X	10am	10am
UNTIL	5pm	5pm	X	X	8pm	X	X	5pm	5pm

✉ [smith.weston@talktalk.net](mailto:smith.weston@talktalk.net) ☎ 01634 724683 **MAP 2****COLONY****10 Borstal Street, Rochester, ME1 3AH**

Colony a community of artists will have paintings, collage, prints, cards, linocuts, photographic prints, books and ceramics on display and available to buy. Colony artists will be available for discussion and tours of the studios.

	SAT	SUN	MON	TUE	WED	THU	FRI	SAT	SUN
FROM	11am	11am	X	X	6pm	X	X	11am	11am
UNTIL	5pm	5pm	X	X	9pm	X	X	5pm	5pm

✉ [colony1017@gmail.com](mailto:colony1017@gmail.com) ColonyArts ColonyArts[www.colony-arts.co.uk](http://www.colony-arts.co.uk) @colony1017





### MAP 3

## YVONNE WHITNELL

15 St Matthews Drive, Borstal, Rochester, ME1 3NW

A new collection of acrylic paintings inspired by the natural world. An exploration of colour shape and texture reflecting the artists thoughts, feelings and emotions.

	SAT	SUN	MON	TUE	WED	THU	FRI	SAT	SUN
FROM	11am	11am	11am	X	X	11am	11am	11am	11am
UNTIL	5pm	5pm	5pm	X	X	7pm	7pm	5pm	5pm

✉ yawhitnell@yahoo.co.uk ☎ 07977419820

Facebook YAW Art-Yvonne Whitnell & NO



### MAP 4

## JACKIE TRINDER

Studio, 28 Fennel Close, The Esplanade, Rochester, ME1 1LW

I paint flora, fauna, landscapes and river scenes in watercolour and mixed media, occasionally in oils. I like to experiment with transparent, vibrant colour and work loosely with the paint. I work in my home studio and run small workshops there. I also go out to larger art groups.

	SAT	SUN	MON	TUE	WED	THU	FRI	SAT	SUN
FROM	11am	11am	X	11am	X	X	11am	11am	11am
UNTIL	6pm	6pm	X	6pm	X	X	7pm	7pm	6pm

✉ trinderjackie@gmail.com ☎ 07714517102 & NO

Facebook jacqueline.trinder.



### MAP 5

## ZAHRA MAJID Avid Explorer

13 Sealand Court, Esplanade, Rochester, ME1 1QH

I do Contemporary Photography balancing a fine edge between Photography & Painting. I print my photo landscapes on premium quality Hahnemuhle Paper for Fine Art Photography & Art Reproductions. I only like to present the best quality to my art collectors and art connoisseurs as something they can frame and keep for life or gift to family and friends. The variety of sizes and prices makes my art loved by all.

	SAT	SUN	MON	TUE	WED	THU	FRI	SAT	SUN
FROM	10am	11am	X	X	X	X	6pm	10am	9am
UNTIL	9pm	6pm	X	X	X	X	9pm	9pm	9pm

☎ 07960 747342 ✉ zahramajid@hotmail.com

Facebook @photoartbyzahra @artimpressionsbyzahramajid  
www.photo4me.com/ZahraMajid & NO



MAP 6

## THE HAZELNUT PRESS

1 Ridley Road, Rochester, ME1 1UL

An inclusive entry that showcases prints created through The Hazelnut Press during the last twelve months. Its purpose is to encourage people to try printmaking as a way to develop their art practice. All prints have been made on short courses here.

	SAT	SUN	MON	TUE	WED	THU	FRI	SAT	SUN
FROM	11am	11am	X	X	X	X	X	11am	11am
UNTIL	6pm	6pm	X	X	X	X	X	6pm	6pm

☎ 07702 269972 ✉ info@hazelnut-press.com

www.hazelnut-press.com 📱 hazelnutpress ♿ NO



MAP 6

## GLORIA HOLDEN

The Hazelnut Press, 1 Ridley Road, Rochester, ME1 1UL

Gloria's work is inspired by the natural world. She is a printmaker, specialising in etching and collagraphs. She also produces detailed layered collages made from fragments of her own prints.

	SAT	SUN	MON	TUE	WED	THU	FRI	SAT	SUN
FROM	11am	11am	X	X	X	X	X	11am	11am
UNTIL	6pm	6pm	X	X	X	X	X	6pm	6pm

✉ gloriaholden@yahoo.co.uk www.gloriaholden-art.com

♿ NO



MAP 6

## HEATHER HAYTHORNTHWAITE

The Hazelnut Press, 1 Ridley Road, Rochester, ME1 1UL

The Hazelnut Press provides Heather with a diverse range of printmaking possibilities. She enjoys the precision of lino cutting and the very different response of wood cut print. She etches on zinc and aluminium, and occasionally screen prints. Recently she has been working at the Artichoke Studio, Brixton too.

	SAT	SUN	MON	TUE	WED	THU	FRI	SAT	SUN
FROM	11am	11am	X	X	X	X	X	11am	11am
UNTIL	6pm	6pm	X	X	X	X	X	6pm	6pm

© 07702 269972 ✉ heatherhtt@mac.com **f** hazelnutpress

© the-hazelnut-press www.hazelnut-press.com &NO



MAP 6

## LIZ HOWE

The Hazelnut Press, 1 Ridley Road, Rochester, ME1 1UL

My art work is varied. I print regularly at The Hazelnut Press, mainly lino cuts, often about my home town, Gravesend. I also make collages with political and/or humorous messages. I love bright colours and enjoy the technique of mixing printed paper surfaces with collage. This makes my life rich.

	SAT	SUN	MON	TUE	WED	THU	FRI	SAT	SUN
FROM	11am	11am	X	X	X	X	X	11am	11am
UNTIL	6pm	6pm	X	X	X	X	X	6pm	6pm

© 07906738165 ✉ lizhowe@blueyonder.co.uk

www.lizow.com **f** liz.howe.94 &NO



MAP 6

## PAT LOCK

The Hazelnut Press, 1 Ridley Road, Rochester, ME1 1UL

I print with The Hazelnut Press and my preferred form is the linocut. Shape, line and pattern are important and linocuts allow me to achieve this. I also enjoy painting icons, using traditional methods and materials - the work again relying on shape, line and pattern.

	SAT	SUN	MON	TUE	WED	THU	FRI	SAT	SUN
FROM	11am	11am	X	X	X	X	X	11am	11am
UNTIL	6pm	6pm	X	X	X	X	X	6pm	6pm

© 01634 865395 ✉ lockpat3@gmail.com

www.hazelnut-press.com &NO



MAP 6

## SEVIYOR JEWELLERY

The Hazelnut Press, 1 Ridley Road, Rochester, ME1 1UL

This years focus has been on creative growth, experimenting with new techniques. Silver will always be my preferred medium and often features alongside natural fibres and in mixed media pieces. 'Easy-to-wear' silver jewellery as well as one of a kind pieces will be on show. Commissions welcomed.

	SAT	SUN	MON	TUE	WED	THU	FRI	SAT	SUN
FROM	11am	11am	X	X	X	X	X	11am	11am
UNTIL	6pm	6pm	X	X	X	X	X	6pm	6pm

☎ 07738 052250 ✉ [Seviyorjewellery@gmail.com](mailto:Seviyorjewellery@gmail.com) &NO  
[www.seviyorjewellery.co.uk](http://www.seviyorjewellery.co.uk) **f** [seviyorjewellery](#) **g+** [Seviyorjewellery](#)



MAP 6

## SHARON PALLENT

The Hazelnut Press, 1 Ridley Road, Rochester, ME1 1UL

My current work explores ancient buildings and landscapes, especially old industrial buildings. I have always been really interested in history and architecture. I work mainly in ink and watercolour and prefer to work outdoors on location. Printmaking is a good extension of my interest in line and form.

	SAT	SUN	MON	TUE	WED	THU	FRI	SAT	SUN
FROM	11am	11am	X	X	X	X	X	11am	11am
UNTIL	6pm	6pm	X	X	X	X	X	6pm	6pm

☎ 07910 521716 ✉ [sharonpallent@blueyonder.co.uk](mailto:sharonpallent@blueyonder.co.uk) &NO  
[www.hazelnut-press.com](http://www.hazelnut-press.com) **f** [hazelnutpress](#) **g+** [the-hazelnut-press](#)



MAP 7

## NIKKI PRICE

27 Ridley Road, Rochester, ME11UL

Nikki's work is inspired by her research into family memories.

	SAT	SUN	MON	TUE	WED	THU	FRI	SAT	SUN
FROM	12am	11am	X	X	X	X	X	12am	11am
UNTIL	5pm	3pm	X	X	X	X	X	5pm	3pm

✉ [nikkipricephotography@gmail.com](mailto:nikkipricephotography@gmail.com)  
[www.nikkipricephotography.com](http://www.nikkipricephotography.com) **f** [NikkiPricePhotography](#)  
**g+** [nikki\\_price\\_photography](#) **t** [@NikkiP\\_Photo](#) &NO



#### MAP 8

### ST. ANDREW'S SCHOOL

24-28 Watts Avenue, Rochester, ME1 1SA

The work on show is a collection of work from year 2-6 pupils from St Andrew's school in Rochester. This includes Aboriginal Art, self-portraits, and artwork to represent the formal elements of art.

	SAT	SUN	MON	TUE	WED	THU	FRI	SAT	SUN
FROM	1pm	X	X	X	X	X	X	X	X
UNTIL	4pm	X	X	X	X	X	X	X	X

☎ 01634 843479 ✉ [hstone@st-andrews.rochester.sch.uk](mailto:hstone@st-andrews.rochester.sch.uk)  
[www.st-andrews.rochester.sch.uk](http://www.st-andrews.rochester.sch.uk) ♿ NO



#### MAP 9

### ANN PALMER

1 King Edward Road, Rochester, ME1 1UA

Ann is inspired by nature painting landscapes and coastal scenes at various times of day and year, state of the tide and weathers, the morning mist, the light on the horizon, the clouds. Her style is impressionistic, representative tending towards abstraction and expressionism. Buy oil paintings, prints and cards

	SAT	SUN	MON	TUE	WED	THU	FRI	SAT	SUN
FROM	X	10am	2pm	X	10am	11am	2pm	10am	10am
UNTIL	X	6pm	6pm	X	6pm	8pm	8pm	8pm	6pm

☎ 07831547811 ✉ [ann.loire@gmail.com](mailto:ann.loire@gmail.com) **f** @annpalmerartist  
[www.annpalmerartist.com](http://www.annpalmerartist.com) **📷** @annpalmerartist  
**🐦** @annpalmerartist ♿ NO



#### MAP 10

### KENT ASSOCIATION FOR THE BLIND MEDWAY ART GROUP

Rochester Cathedral, Boley Hill, Rochester, ME1 1SX

My Self - a group show exploring identity by artists with sight loss. Featuring paintings, mixed media and sculpture. This is part of a collaboration with the MESS ROOM and Sun Pier House. Funded Arts Council National Lottery Project Grant Funding. This exhibition is open until 30th August.

	SAT	SUN	MON	TUE	WED	THU	FRI	SAT	SUN
FROM	X	X	10am	X	11am	10am	12am	10am	12am
UNTIL	X	X	4pm	X	4pm	4pm	4pm	4pm	4pm

☎ 07989264768 ✉ [mail@wendydaws.co.uk](mailto:mail@wendydaws.co.uk)  
**f** kabmedwayartgroup **🐦** @wendydaws ♿ Yes



MAP 10

## KENT ASSOCIATION FOR THE BLIND GRAVESEND ART GROUP

Rochester Cathedral, Boley Hill, Rochester, ME1 1SX

A selection of artworks by artists with sight loss. Created over several months this body of work demonstrates what can be achieved regardless of sight. The exhibition is open until 30th August.

	SAT	SUN	MON	TUE	WED	THU	FRI	SAT	SUN
FROM	X	X	10am	X	11am	10am	12am	10am	12am
UNTIL	X	X	4pm	X	4pm	4pm	4pm	4pm	4pm

☎ 07989264768 ✉ mail@wendydaws.co.uk

📘 kabmedwayartgroup 🐦 @wendydaws ♿ NO



MAP 10

## SENSING CULTURE: THE BEANEY

Rochester Cathedral, Boley Hill, Rochester, ME1 1SX

A selection of artworks by artists with sight loss who meet at The Beaney House of Art & Knowledge, Canterbury. This artwork is directly inspired by the museum collections. The exhibition is open until 30th August.

	SAT	SUN	MON	TUE	WED	THU	FRI	SAT	SUN
FROM	X	X	10am	X	11am	10am	12am	10am	12am
UNTIL	X	X	4pm	X	4pm	4pm	4pm	4pm	4pm

☎ 07989264768 [www.canterburymuseums.co.uk/sensing-culture](http://www.canterburymuseums.co.uk/sensing-culture)

📘 TheBeaney 🎧 The\_Beaney 🐦 The\_Beaney ♿ Yes



MAP 11

## HUGUENOT MUSEUM

95 High Street, Rochester, ME1 1LX

Using our handling collection, which is not usually on display, sketch, create and write and bring stories to life! Step inside the Huguenot Museum, which shares the story of Britain's first refugees, and take part in a range of self-guided drop-in activities in our galleries.

	SAT	SUN	MON	TUE	WED	THU	FRI	SAT	SUN
FROM	10am	X	X	X	10am	10am	10am	10am	10am
UNTIL	5pm	X	X	X	5pm	5pm	5pm	5pm	5pm

Last Admissions at 16:15 ☎ 01634789347 ✉ learning@huguenot-museum.org [www.huguenotmuseum.org](http://www.huguenotmuseum.org) 📘 huguenotmuseum

🎧 huguenot\_museum 🐦 @huguenotmuseum ♿ Yes



## MAP 12

### ADELE LOVE

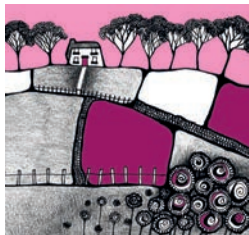
The Moat House Coffee Shop, The Moat House, 8 Crow Lane, Rochester, ME1 2RF

Adele paints spontaneously, referencing memories of drawing in the landscape, the sensation of being there, the colours, edges of forms, growth and decay and her own emotional growth as she moves through various life stages. Adele is exhibiting alongside Celia Hyland and Olivia Schlevogt. Originals, prints and cards for sale.

	SAT	SUN	MON	TUE	WED	THU	FRI	SAT	SUN
FROM	10.30am	12am	10am	10am	10am	10am	10am	10.30am	12am
UNTIL	3pm	4pm	3pm	3pm	3pm	3pm	3pm	3pm	4pm

☎ 07759 663015 ✉ [adeleloveart@gmail.com](mailto:adeleloveart@gmail.com)

[www.adelelove.com](http://www.adelelove.com) ♿ Yes



## MAP 12

### CELIA HYLAND

The Moat House Coffee Shop, The Moat House, 8 Crow Lane, Rochester, ME1 2RF

Mixed-media artist Celia is influenced by the beauty and chaos found in nature. Layers and texture feature prominently in her quirky and whimsical illustrations and textile pieces using embroidery, paper, wire and cloth. Celia is exhibiting alongside Adele Love and Olivia Schlevogt. Originals, framed prints and cards for sale.

	SAT	SUN	MON	TUE	WED	THU	FRI	SAT	SUN
FROM	10.30am	12am	10am	10am	10am	10am	10am	10.30am	12am
UNTIL	3pm	4pm	3pm	3pm	3pm	3pm	3pm	3pm	4pm

☎ 07970 638425 ✉ [celiahyland@gmail.com](mailto:celiahyland@gmail.com)

[www.celiahyland.co.uk](http://www.celiahyland.co.uk)  [celiahylandartist](#)  [celiahyland](#)

♿ Yes



#### MAP 12

### OLIVIA SCHLEVOGT JEWELLERY

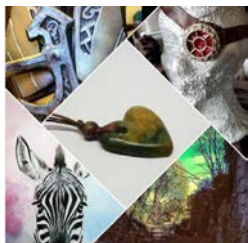
The Moat House Coffee Shop, The Moat House,  
8 Crow Lane, Rochester, ME1 2RF

Olivia's jewellery is made in silver and detailed with fused yellow and white gold ornamentations, adding interesting and unusual stones to her contemporary and unique designs. Olivia has been a jeweller for 30 years, won many prizes for her designs and is exhibiting her work for the first time in her home town of Rochester.

	SAT	SUN	MON	TUE	WED	THU	FRI	SAT	SUN
FROM	10.30am	12am	X	X	X	X	X	10.30am	12am
UNTIL	3pm	4pm	X	X	X	X	X	3pm	4pm

✉ [olivia@oliviaschlevogt.com](mailto:olivia@oliviaschlevogt.com) [www.oliviaschlevogt.com](http://www.oliviaschlevogt.com)

📍 [oliviaschlevogtjewellery](https://www.facebook.com/oliviaschlevogtjewellery) ♿ Yes



#### MAP 13

### THE NEW GROUP OF MISFITS

Rochester Adult Education Centre, Room 19, Eastgate,  
Rochester, ME1 1EW

We are 5 independent artists, a bohemian lapidary Jeweller, a Steampunk Queen, a watercolour and sketch animal lover, the urban photographer and abstract artist and costume maker. We are working our first exhibit and festival together to build each other up with our jewellery, accessories and prints.

	SAT	SUN	MON	TUE	WED	THU	FRI	SAT	SUN
FROM	9am	9am	9am	9am	9am	9am	9am	9am	X
UNTIL	5pm	5pm	5pm	5pm	5pm	5pm	5pm	5pm	X

📍 [MedwayLittleMisfits](https://www.facebook.com/MedwayLittleMisfits) ♿ Yes





#### MAP 14

### GLASSMANIA

INTRA, 337-341 High Street, Rochester, ME1 1DA

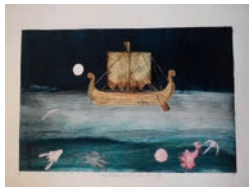
Karen has been producing glass work for many years, creating installations for both private and commercial clients. A variety of glass techniques will be exhibited including lead working, fusing, copper foiling, mosaics and lamp working. Students work will also be on display, from Glassmania courses at INTRA and Karen's studio.

	SAT	SUN	MON	TUE	WED	THU	FRI	SAT	SUN
FROM	10am	10am	10am	X	11am	10am	6pm	10am	10am
UNTIL	4pm	4pm	4pm	X	6pm	4pm	9pm	4pm	4pm

☎ 07968 090275 ✉ karen@glassmania.co.uk

www.glassmania.co.uk 📺 glassmania.co.uk 📍 glassmaniaart

♿ Yes 3" step at entrance, ramp available



#### MAP 14

### JANE FURST

INTRA, 337-341 High Street, Rochester, ME1 1DA

My printmaking concentrates on mezzotint (editioned) and dry point monotypes. My subject matter is often inspired by Northern Renaissance artists and the 19th century naturalist Ernst Haeckel. I'm interested in metaphor and poetic narrative. Some of my recent dry points use ancient vessels as a central image.

	SAT	SUN	MON	TUE	WED	THU	FRI	SAT	SUN
FROM	10am	10am	10am	X	11am	10am	6pm	10am	10am
UNTIL	4pm	4pm	4pm	X	6pm	4pm	9pm	4pm	4pm

✉ janecopus44@gmail.com nwww.janefurst.co.uk 📍 jane\_t\_furst

♿ Yes 3" step at entrance, ramp available



MAP 14

## NEW SAD

INTRA, 337-341 High Street, Rochester, ME1 1DA

NEW SAD is a Medway-born collaboration between Ben Sad and Adam Newton, featuring irreverent paintings, collages and sculptures influenced by current events, punk aesthetics and tattoo culture. Offensive content likely.

	SAT	SUN	MON	TUE	WED	THU	FRI	SAT	SUN
FROM	10am	10am	10am	X	11am	10am	6pm	10am	10am
UNTIL	4pm	4pm	4pm	X	6pm	4pm	9pm	4pm	4pm

☎ 07810 464545 ✉ adam@adamnewtonart.com

www.adamnewtonart.com/new-sad 📺 newsadstudio

♿ Yes 3" step at entrance, ramp available



MAP 14

## PAUL JEROME

INTRA, 337-341 High Street, Rochester, ME1 1DA

I love pubs! This is a selection of screen printed inn signs, both imaginary and real, exploring heraldic beasts and imagery across Kent. Pop in for a visit to the Red Lion, White Hart and Black Swan.

	SAT	SUN	MON	TUE	WED	THU	FRI	SAT	SUN
FROM	10am	10am	10am	X	11am	10am	6pm	10am	10am
UNTIL	4pm	4pm	4pm	X	6pm	4pm	9pm	4pm	4pm

☎ 07986 076792 ✉ pauljohnjerome@yahoo.co.uk

📺 pejelinoprint ♿ Yes 3" step at entrance, ramp available



MAP 14

## UNRAVEL & UNWIND CIC

INTRA, 337-341 High Street, Rochester, ME1 1DA

A community space to create and craft in like-minded company. Meet new people, have fun and learn new skills such as crochet, felting, paper crafts or sewing with our creative workshops. You can drop in and craft anytime on Mon, Thur, Sat or Sun from 10am to 4pm.

	SAT	SUN	MON	TUE	WED	THU	FRI	SAT	SUN
FROM	10am	10am	10am	X	11am	10am	6pm	10am	10am
UNTIL	4pm	4pm	4pm	X	6pm	4pm	9pm	4pm	4pm

www.unravelandunwind.co.uk 📘 unravelandunwind

📺 @unravel\_unwind 🐦 @unravel\_unwind ♿ Yes 3" step at entrance, ramp available



#### MAP 14

### XTINA LAMB

INTRA, 337-341 High Street, Rochester, ME1 1DA

Xtina is known as a printmaker but uses many different approaches to making art. She is showing prints on paper, artists books, artworks made from sea plastic, printed textiles, illustrations cut in brightly coloured vinyl and works in progress. Her studio is a densely packed cabinet of curiosities.

	SAT	SUN	MON	TUE	WED	THU	FRI	SAT	SUN
FROM	10am	10am	10am	X	11am	10am	6pm	10am	10am
UNTIL	4pm	4pm	4pm	X	6pm	4pm	9pm	4pm	4pm

✉ [xtinalamb@gmail.com](mailto:xtinalamb@gmail.com) [www.xtinalamb.co.uk](http://www.xtinalamb.co.uk)

📘 [printedwonders](#) 📺 [xtinalamb](#) 🐦 [printedwonders](#)

♿ Yes 3" step at entrance, ramp available



#### MAP 14

### MEDWAY FINE PRINTMAKERS

INTRA, 337-341 High Street, Rochester, ME1 1DA

An artist-run not-for-profit print studio offering courses and open access sessions. On show are screen prints, etchings, linocuts, collagraphs, photopolymer / solar plate prints, monoprints, textiles, letterpress and Risograph work. Some members will be printing at the weekends, so come and see our presses in action.

	SAT	SUN	MON	TUE	WED	THU	FRI	SAT	SUN
FROM	10am	10am	10am	X	11am	10am	6pm	10am	10am
UNTIL	4pm	4pm	4pm	X	6pm	4pm	9pm	4pm	4pm

☎ 01634 753299 ✉ [medwayfineprintmakers@gmail.com](mailto:medwayfineprintmakers@gmail.com)

[www.medwayfineprintmakers.co.uk](http://www.medwayfineprintmakers.co.uk) 📺 [medwayfineprintmakers](#)

♿ Yes 3" step at entrance, ramp available



MAP 15

## WENDY DAWS

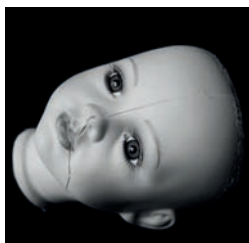
The Tack Room, Hulkes Lane, Rochester, ME1 1EE

Another chance to pop by the Tack Room and if the weather is kind, sit and gaze at the Medway. A 'Memory Blanket' will grow throughout open studios. Visitors can help it grow by adding from my supply of perspex memories. Trust me, it will make sense when you visit.

	SAT	SUN	MON	TUE	WED	THU	FRI	SAT	SUN
FROM	10am	10am	X	X	X	10am	3am	10am	10am
UNTIL	5pm	5pm	X	X	X	5pm	9pm	5pm	5pm

☎ 07989 264768 ✉ mail@wendydaws.co.uk

www.wendydaws.co.uk 📱 @wendy\_daws 🐦 @wendydaws ♿️🇳🇴



MAP 15

## LAURA FISHER

The Tack Room, Hulkes Lane, Rochester, ME1 1EE

This body of work documents the fragility of mental health. We are all flawed. We all endure trauma, bumps and scrapes. At times we are broken and cracked. Each image reflects that although broken, we can still be beautiful.

	SAT	SUN	MON	TUE	WED	THU	FRI	SAT	SUN
FROM	10am	10am	X	X	X	10am	3am	10am	10am
UNTIL	5pm	5pm	X	X	X	5pm	9pm	5pm	5pm

☎ 07751 114516 ✉ laurafisher007@sky.com

📱 @LFisherFoto 📱 @laurafisherfoto 🐦 @laurafisher007 ♿️🇳🇴



MAP 15

## RIKARD ÖSTERLUND

The Tack Room, Hulkes Lane, Rochester, ME1 1EE

Professional photographer and teacher Rikard will show prints from an ongoing personal project exploring his homeland Sweden. His autobiographical work combines different photographic processes including digital, video and wet plate collodion.

	SAT	SUN	MON	TUE	WED	THU	FRI	SAT	SUN
FROM	10am	10am	X	X	X	10am	3am	10am	10am
UNTIL	5pm	5pm	X	X	X	5pm	9pm	5pm	5pm

☎ 07990516767 ✉ info@rikard.co.uk www.rikard.co.uk

📱 @rikardolino 🐦 @rikard ♿️🇳🇴



MAP 15

## ZARA CARPENTER

The Tack Room, Hulkes Lane, Rochester, ME1 1EE

In this on-going series Zara takes photographs of herself, this work explores the experience of trauma. Using a range of different materials and techniques to damage and consume the image surface, she releases the trauma and traps it into the image. A defiant act of healing - an act of catharsis.

	SAT	SUN	MON	TUE	WED	THU	FRI	SAT	SUN
FROM	10am	10am	X	X	X	10am	3am	10am	10am
UNTIL	5pm	5pm	X	X	X	5pm	9pm	5pm	5pm

✉ [zaracarpenter@gmail.com](mailto:zaracarpenter@gmail.com) [www.zaracarpenter.com](http://www.zaracarpenter.com)

📍 @zaracarpenter 🐦 @zaracarpenter ♿ NO



MAP 15

## MATILDA FLOOD

The Tack Room, Hulkes Lane, Rochester, ME1 1EE

A collection of A-level and UCA Foundation works from a visual communication student. This collection features favourite pieces that highlight my growth and development as a young creative in 2019. Hunting for inspiration? Come along and have a look.

	SAT	SUN	MON	TUE	WED	THU	FRI	SAT	SUN
FROM	10am	10am	X	X	X	10am	3am	10am	10am
UNTIL	5pm	5pm	X	X	X	5pm	9pm	5pm	5pm

📍 @sillytilyxx ♿ NO



MAP 15

## MATT BRAY

The Tack Room, Hulkes Lane, Rochester, ME1 1EE

Matt Bray and Darrell Hawkins continue their collaboration showing paintings made for the wall alcoves of The Tack Room. They reworked the 18th century painting 'The Swing' by Jean-Honore Fragonard in their own inimitable style. Matt will also be showing his sculptural piece Spookasem, an 8 foot giant.

	SAT	SUN	MON	TUE	WED	THU	FRI	SAT	SUN
FROM	10am	10am	X	X	X	10am	3am	10am	10am
UNTIL	5pm	5pm	X	X	X	5pm	9pm	5pm	5pm

✉ [mattbrayarts@yahoo.co.uk](mailto:mattbrayarts@yahoo.co.uk) **f** Matt Bray - Contemporary Artist

🐦 @mattbray1 📍 @mattbrayarts ♿ NO



## MAP 16

### RICHARD CURTIS

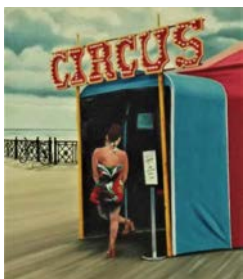
Studio 3, 1st Floor, Sun Pier House, Medway St, Chatham, ME4 4HF

My work is a reflection of my engagement with the local environment. My preferred materials and methods include painting in oils and drawing in ink, with a fine line pen.

	SAT	SUN	MON	TUE	WED	THU	FRI	SAT	SUN
FROM	10am	10am	X	X	X	X	X	10am	10am
UNTIL	5pm	5pm	X	X	X	X	X	5pm	5pm

☎ 077487 18997 ✉ richardcurtis@btinternet.com

📱 Richard Curtis & NO



## MAP 16

### LOUISE NEVETT

Studio 5, 1st Floor, Sun Pier House, Medway St, Chatham, ME4 4HF

Paintings, drawings, prints and collage exploring social issues and expectations relating to image, motherhood, family and food.

	SAT	SUN	MON	TUE	WED	THU	FRI	SAT	SUN
FROM	10am	10am	X	X	X	X	X	10am	10am
UNTIL	5pm	5pm	X	X	X	X	X	5pm	5pm

www.louisenevett.co.uk

✉ louise\_nevett7@btinternet.com & NO



## MAP 16

### JAMIE MCGRANE

Studio 6, 1st Floor, Sun Pier House, Medway St, Chatham, ME4 4HF

Subculture's photography from the Mod, Scooterist, Skinhead scenes. Each, with their own distinctive passion's for clothes, music and attitude. Colour, monochrome and pop art techniques used for my own unique photography.

	SAT	SUN	MON	TUE	WED	THU	FRI	SAT	SUN
FROM	9am	9am	X	X	X	X	X	9am	9am
UNTIL	5pm	5pm	X	X	X	X	X	5pm	5pm

☎ 07887 247394 ✉ jamiejdoggmccrane@gmail.com

www.2-jamie-mcgrane.pixels.com 📱 jamie.j.mcgrane & NO



MAP 16

## PETER COLLINS

Studio 2, 1st Floor, Sun Pier House, Medway St, Chatham, ME4 4HF  
Puppets, sets, storyboards, concept art and screenings of animation from music videos to fantasy stories exploring this fantastic medium.

	SAT	SUN	MON	TUE	WED	THU	FRI	SAT	SUN
FROM	10am	10am	X	X	X	X	X	10am	10am
UNTIL	5pm	5pm	X	X	X	X	X	5pm	5pm

© 07929 278691 ✉ [bluedinosauranimation@gmail.com](mailto:bluedinosauranimation@gmail.com) ♿ NO



MAP 16

## REFLEX PHOTOGRAPHIC CLUB

Sun Pier House Tearoom, 2nd Floor, Medway St, Chatham, ME4 4HF  
This exhibition is a collection of photographs taken by Club members. The Club's aim is to positively encourage the study and practice of photography. Members range from experienced to complete beginner, all with a passion for photography. New members are always welcome.

	SAT	SUN	MON	TUE	WED	THU	FRI	SAT	SUN
FROM	11am	11am	X	X	11am	11am	11am	11am	11am
UNTIL	4pm	4pm	X	X	4pm	4pm	4pm	4pm	4pm

© 07971 673707 ✉ [reflexphotoclub@gmail.com](mailto:reflexphotoclub@gmail.com)  
[www.reflexphoto.co.uk](http://www.reflexphoto.co.uk) ♿ NO



MAP 16

## MESS ROOM

Ground floor, Sun Pier House, Medway Street, Chatham, ME4 4HF  
MESS ROOM will show a selection of artworks from the Open Arts My Self group exhibition exploring identity. Art by deaf artists and those with sight loss and students from Danecourt, Barnsole and All Faith's. Take part in a drop-in workshop to create your own 'Wonky Portrait' £2 each.

	SAT	SUN	MON	TUE	WED	THU	FRI	SAT	SUN
FROM	11am	11am	X	X	X	X	X	11am	11am
UNTIL	3pm	3pm	X	X	X	X	X	3pm	3pm

☎ 07989 264768 ✉ mail@messroom.org.uk  
www.messroom.org.uk 📺 @MessRoomMedway  
📺 @MessRoomMedway 🐦 @MessRoomMedway ♿ Yes



MAP 16

## 35 YEARS OF VISUAL ARTS AT ROCHESTER INDEPENDENT COLLEGE

Sun Pier House Gallery, 2nd Floor, Medway St, Chatham, ME4 4HF  
This exhibition celebrates the art and design produced by students and staff at Rochester Independent College over the past 35 years. Showcasing painting, photography, graphic design, textiles, sculpture and ceramics. The school was founded in 1984 and now has an International reputation with staff and students coming from all over the world.

	SAT	SUN	MON	TUE	WED	THU	FRI	SAT	SUN
FROM	11am	11am	X	X	11am	11am	11am	11am	11am
UNTIL	4pm	4pm	X	X	4pm	4pm	4pm	4pm	4pm

<https://ricvisualarts.wordpress.com/> 📺 RochesterIndependentCollege  
📺 @rochesterindcollege/ 🐦 @rochesterindcol ♿ NO



MAP 17

## DEBORAH SMITH

16A, Nucleus Arts Centre, 272 High Street, Chatham, ME4 4BP  
Figurative drawing and painting using mixed media - mainly figures.

	SAT	SUN	MON	TUE	WED	THU	FRI	SAT	SUN
FROM	11am	11am	*	X	*	X	*	11am	11am
UNTIL	4.30pm	4.30pm	*	X	*	X	*	4.30pm	4.30pm

\*By Appointment only ✉ deborahsmith1st@gmail.com  
📺 @DeborahSmithArtist 📺 deborahsmith1st ♿ NO





MAP 17

## JONATHAN ASH

Studio 11B, Nucleus Arts Centre, 272 High Street, Chatham, ME4 4BP

Bright, bold and slightly cheeky acrylic paintings, prints, cards and mugs from Medway artist and colourblind chappie Jonathan Ash. People, places, animals and other bits and bobs. Come and see for yourself!

	SAT	SUN	MON	TUE	WED	THU	FRI	SAT	SUN
FROM	11am	11am	X	X	X	X	X	11am	11am
UNTIL	4pm	4pm	X	X	X	X	X	4pm	4pm

☎ 07784307107 ✉ jonathanash@mail.com

www.jonathanashart.etsy.com 📺 JonathanAshArt

📧 @JonathanAshArt 🐦 @JonathanAshArt ♿ NO



MAP 17

## ANNE TAYLOR

Studio 13/14B, Nucleus Arts Centre, 272 High St, Chatham, ME4 4BP

Contemporary landscape paintings. Working in acrylic paint on panel and canvas. Limited Giclee prints also available.

	SAT	SUN	MON	TUE	WED	THU	FRI	SAT	SUN
FROM	11am	11am	X	X	X	X	X	11am	11am
UNTIL	4pm	4pm	X	X	X	X	X	4pm	4pm

☎ 07772329646 ✉ atmyipad@gmail.com

📺 annetaylorartist ♿ NO



MAP 17

## LILIA ORLOVA-HOLMES

Studio 14, Nucleus Arts Centre, 272 High Street, Chatham, ME4 4BP

I paint flowers, the sunshine, cats sleeping in the garden, blue colour, the smell of green grass, emotions, feelings, thoughts and everything that makes me happy. I don't follow one style or subject, I am painting emotions and feelings, thoughts and memories evoked by the object.

	SAT	SUN	MON	TUE	WED	THU	FRI	SAT	SUN
FROM	11am	X	X	X	X	5pm	X	11am	X
UNTIL	5pm	X	X	X	X	7pm	X	5pm	X

www.artfinder.com/lilia-orlova-holmes 📺 orlovaholmesgallery

📧 liliaorlovaholmes 🐦 @Lilia67830043 ♿ NO



## MAP 17

### SIAN BOSTWICK JEWELLERY

Studio 17B, Nucleus Arts Centre, 272 High Street, Chatham, ME4 4BP  
Beautiful jewellery with delicate details and shimmering gemstones handcrafted with love. Enchanting fairytale jewels in silver, titanium & aluminium plus one off collections of unique jewellery. Multi award winning jewellery designs handmade in Chatham. Bespoke jewellery design & couples wedding ring classes available.

	SAT	SUN	MON	TUE	WED	THU	FRI	SAT	SUN
FROM	11am	11am	X	X	X	11am	11am	11am	11am
UNTIL	4pm	4pm	X	X	X	8pm	4pm	4pm	4pm

✉ [sian\\_bostwick@live.co.uk](mailto:sian_bostwick@live.co.uk) [www.sianbostwick.co.uk](http://www.sianbostwick.co.uk)

Facebook: [SianBostwickJewellery](#) Instagram: [sian\\_bostwick](#) Twitter: [@SianBostwick](#)

♿ Yes



## MAP 17

### MAGGIE OSBORN

Studio 3B, Nucleus Arts Centre, 272 High street, Chatham, ME4 4BP  
A theatre designer working with all mediums and experimenting with each piece of work. Paintings and sculptures. Framed prints and canvases will be exhibited.

	SAT	SUN	MON	TUE	WED	THU	FRI	SAT	SUN
FROM	11am	11am	X	X	X	12am	X	11am	11am
UNTIL	4pm	3pm	X	X	X	5pm	X	4pm	3pm

✉ [maggieosborn@hotmail.co.uk](mailto:maggieosborn@hotmail.co.uk) [www.nucleusarts.com](http://www.nucleusarts.com)

Facebook: [Maggie Osborn - Artist Osoarty](#) Instagram: [Osoarty](#) Twitter: [Osoarty](#) ♿ NO



## MAP 17

### HOLLY CHADD

Studio 6A, Nucleus Arts Centre, 272 High Street, Chatham, ME4 4BP  
Small scale sculptures in ceramic and mixed media deal with death, belief and nostalgia in a playful, tactile way.

	SAT	SUN	MON	TUE	WED	THU	FRI	SAT	SUN
FROM	11am	11am	X	X	X	5.30pm	X	11am	X
UNTIL	4pm	4pm	X	X	X	8pm	X	4pm	X

✉ [hmchadd@gmail.com](mailto:hmchadd@gmail.com) [www.hmchadd.com](http://www.hmchadd.com)

♿ selection\_box ♿ NO



MAP 17

## ANGELA LYON

Nucleus Arts Centre, 272 High Street, Chatham, ME4 4BP

The painting "Give me space" is inspired by the experience of walking in open spaces on wide expanses of beach, exposed to the elements. This is an acrylic painting on canvas measuring 110 x 40 cms.

	SAT	SUN	MON	TUE	WED	THU	FRI	SAT	SUN
FROM	11am	X	X	X	X	11am	X	X	X
UNTIL	5pm	X	X	X	X	5pm	X	X	X

✉ [lyonangela@hotmail.co.uk](mailto:lyonangela@hotmail.co.uk) ♿ Yes



MAP 17

## NICK ASHTON

Nucleus Arts Centre, Studio 8b, 272 High Street, Chatham, ME4 4BP

I'm a local artist who specializes in illustrating children's books, cartoon portraits and greetings cards. I also cater for weddings, new babies, leaving work cards and birthdays. Feel free to pop along and see my latest work.

	SAT	SUN	MON	TUE	WED	THU	FRI	SAT	SUN
FROM	10am	10am	X	X	10am	10am	10am	10am	10am
UNTIL	5pm	5pm	X	X	5pm	5pm	5pm	5pm	5pm

☎ 07916 161855 ✉ [nick\\_ashton81@hotmail.com](mailto:nick_ashton81@hotmail.com)

[www.chickenmonster.co.uk/illustration](http://www.chickenmonster.co.uk/illustration)

📘 chickenmonsterltd 📺 nick\_ashton812018/

🐔 ChickenMon1981 ♿ NO



MAP 17

## SHARON COOPER

Studio 4A, Nucleus Arts Centre, 272 High Street, Chatham, ME4 4BP

Stitched memories and cyanotype stories explore the personal history of this Medway artist. Sharon's reflections on her own life are intimate, yet offer a shrewd commentary on the portrayal of women in mass media, the choice of materials and techniques, like sewing, subverting familiar images.

	SAT	SUN	MON	TUE	WED	THU	FRI	SAT	SUN
FROM	11am	11am	X	11am	X	5.30pm	X	X	X
UNTIL	4pm	4pm	X	4pm	X	8pm	X	X	X

☎ 07784 196475 ✉ [sharonofchatham@gmail.com](mailto:sharonofchatham@gmail.com)

[www.sharonofchatham.com](http://www.sharonofchatham.com) 📺 scooperama ♿ NO



MAP 17

## TANYA OUTEN

Nucleus Arts Centre, 272 High Street, Chatham, ME4 4BP

I am an abstract artist inspired by the intense spirit of Asia along with the spiritual colours and feelings I experience within my dreams. I aspire to accomplish a transcendental, ethereal experience within my abstract paintings, working primarily with canvas, acrylic, slate, rock and resin.

	SAT	SUN	MON	TUE	WED	THU	FRI	SAT	SUN
FROM	11am	11am	X	X	X	X	X	11am	11am
UNTIL	4pm	4pm	X	X	X	X	X	4pm	4pm

☎ 07849 835148 ✉ tanyaoutenartist@gmail.com

www.saatchiart.com/tanyaouten 📺 @tanyaoutenartist

📞 @ts\_aart 🐦 @ts\_aart ♿ NO



MAP 17

## JAY FRANCOIS-CAMPBELL

Studio 2C, Nucleus Arts Centre, 272 High Street, Chatham, ME4 4BP

The documentation of The Strand in Gillingham and surrounding areas by using photographs to create a visual story on wearable period garments

	SAT	SUN	MON	TUE	WED	THU	FRI	SAT	SUN
FROM	10am	10am	X	X	X	6pm	X	10am	X
UNTIL	5pm	5pm	X	X	X	8pm	X	5pm	X

☎ 07956 903 708 ✉ jfrancois-campbell@outlook.com ♿ NO

📺 J Francois-Campbell 📞 JFrancois-Campbell 🐦 @FranCamp



MAP 18

## KENT ASSOCIATION FOR THE BLIND MEDWAY ART GROUP

Chatham Dockyard, The Cafe Gallery, Chatham, ME4 4TZ

The HLF funded Command of the Heights project has commissioned Medway artists with sight loss to create artworks inspired by Fort Amherst. These original artworks are on show until 10th August, the final artworks will be laser etched into slate and installed at the Fort for permanent display as part of the project.

	SAT	SUN	MON	TUE	WED	THU	FRI	SAT	SUN
FROM	10am	10am	10am	10am	10am	10am	10am	10am	10am
UNTIL	6pm	6pm	6pm	6pm	6pm	6pm	6pm	6pm	6pm

☎ 01634 823800 ✉ info@chdt.org.uk www.thedockyard.co.uk

📺 historic.chatham 🐦 @DockyardChatham ♿ Yes



## MAP 19

### PAM DODDS

3 Chamberlain Court, Wigmore, Gillingham, ME8 0SY

A maker in clay, I use porcelain most often and throw on the wheel. Pots will dominate but I also enjoy drawing, painting and a bit of papier mache. I will be in my garage.

	SAT	SUN	MON	TUE	WED	THU	FRI	SAT	SUN
FROM	11am	10am	X	X	12am	X	X	X	X
UNTIL	5pm	4pm	X	X	4pm	X	X	X	X

☎ 01634378692 ✉ [pam.dodds@blueyonder.co.uk](mailto:pam.dodds@blueyonder.co.uk)

📍 whiteskysilver sun

**Landscape Artist & Photographer**, Zahra Majid  
Chartered MCIPD. Fine Art Prints,  
Acrylics, Canvases for sale  
[www.photo4me.com/ZahraMajid](http://www.photo4me.com/ZahraMajid)

---

**Ann Palmer Original framed oil paintings.** *Seascapes, landscapes, flowers. Commissions. Happy to discuss your requirements.*

☎ 07831 547811

✉ [ann.loire@gmail.com](mailto:ann.loire@gmail.com)

[www.annpalmerartist.com](http://www.annpalmerartist.com)

---

**Jackie Trinder Artist, Tutor, Workshops, Demos.**

✉ [trinderjackie@gmail.com](mailto:trinderjackie@gmail.com)

[www.jackietrinder.com](http://www.jackietrinder.com)

---

*Sun Pier House* **CIC, Studios, Gallery, Venue, Workshops, Tearoom, varied**

*Events & Arts programme*

[www.sunpierhouse.co.uk](http://www.sunpierhouse.co.uk)

☎ 01634 401 549

📱 @SunPierHouse

---

**Professional illustrator,** *specializing in commercial art, cartoon portraits, children's books and greetings cards.*

[www.chickenmonster.co.uk/illustration](http://www.chickenmonster.co.uk/illustration)

☎ 07916161855

✉ [nick@chickenmonster.co.uk](mailto:nick@chickenmonster.co.uk)

---

**Craft & Chat** *with Unravel & Unwind.*  
*Enjoy craft with like-minded people.*  
*Learn-Share-Swap*

[www.unravelandunwind.co.uk](http://www.unravelandunwind.co.uk)

✉ [unravelandunwind@gmail.com](mailto:unravelandunwind@gmail.com)

---

**Sailing Charters, Events & unique Venue hire,** *historic Thames Sailing Barge, on River Medway.*

[www.TillerAndWheel.com](http://www.TillerAndWheel.com)

☎ 07814 950 442

✉ [tillerandwheel@gmail.com](mailto:tillerandwheel@gmail.com)

---

**Custom Silkscreen Stencils,** *print your own designs onto paper or textiles with lightweight thermofax screens.*

[www.printedwonders.co.uk](http://www.printedwonders.co.uk)

☎ 01634 753299 ✉ [xtinalamb@gmail.com](mailto:xtinalamb@gmail.com)

---

**Vinyl Sticker Signage / Decorations,** *custom choice of text / images and colour for exhibitions, wall decor, window displays, laptops, cars...*

[www.printedwonders.co.uk](http://www.printedwonders.co.uk)

☎ 01634 753299 ✉ [xtinalamb@gmail.com](mailto:xtinalamb@gmail.com)

---

**Printmaking Courses / Open Access** *screen printing, etching, linocut, Risograph, photopolymer, textiles... in friendly Rochester studio.*

✉ [medwayfineprintmakers@gmail.com](mailto:medwayfineprintmakers@gmail.com)

☎ 01634 753299

[www.medwayfineprintmakers.co.uk](http://www.medwayfineprintmakers.co.uk)

---

**Original Subculture Photography and Pop Art.** *I am active on the subculture scenes, extensively in the UK and Europe. Jamie McGrane*  
www.2-jamie-mcgrane.pixels.com

☎ 07887 247394

---

**Reflex Photographic Club in Rainham,** *encourages the study and practice of photography. All levels welcome.*

www.reflexphoto.co.uk ☎ 07971 673707

✉ reflexphotoclub@gmail.com

---

**Photography & Workshops: Nikki Price,** *Commercial Photographer, independent artist, workshop facilitator, Arts Award Advisor, Researcher.*

www.nikkipricephotography.com

✉ nikkipricephotography@gmail.com

---

**Sharon Pallent, Artist and Printer,** *Pen and Ink and Watercolour paintings, Linocuts and etchings*  
www.hazelnut-press.com

☎ 07910521716

✉ sharonpallent@blueyonder.co.uk

---

**Glass Commissions Undertaken.** *Bespoke Leaded windows to glass splash backs. Classes in Glass art also available.*

www.glassmania.co.uk

☎ 07968 090275

✉ karen@glassmania.co.uk

Nucleus Arts at The Halpern Conservancy Board Building, 15a High Street Rochester ME1 1PY  
**Studios, Boardroom, Gallery, Cafe Nucleus**

Nucleus Arts Hub,  
Military Road, Chatham -  
www.nucleusarts.com/creative-riverside-hub  
**Cafe Nucleus, Creative workspace, Studios**

Nucleus Arts Centre, 272 High Street, Chatham, ME4 4BP -  
www.nucleusarts.com

**Gallery, Studios, Meeting Room, Workshops, Cafe Nucleus**

Nucleus Arts Heart of the Community, Unit 67 (or First Floor), The Pentagon Centre, Chatham.  
www.nucleusarts.com/music-studios-1-1 F  
**Community space for hire**

\*To be added to the 2020 ARTS DIRECTORY email info@medwayopenstudios.co.uk; £10 for up to 15 words + website, email, phone. Up to 5 words in bold, with extra words 50p. No images\*



# **THE CITY OF ROCHESTER SOCIETY**

## **WE'RE DELIGHTED TO BE SPONSORING MEDWAY OPEN STUDIOS. AGAIN.**

Last year we enjoyed our involvement with Medway Open Studios & Arts Festival so much, we just had to do it again. For over 50 years we've been working hard to conserve, preserve and promote the quality of life in this city we love. And we always try to showcase local artists and photographers. So where better to view their work than during the Festival?

Join us to celebrate the very best Rochester has to offer.



**[info@city-of-rochester.org.uk](mailto:info@city-of-rochester.org.uk)**



**@CORochesterSoc**