

# PROJECT : "PLATFORM" M CUSTOMS SQUARE MECHLIN

## RECONVERSION TO THE ARRANGEMENT INTO A PARTY- AND EVENTHAL

**Client:**

City of Mechlin  
Building Service  
Bafferstraat  
2800 Mechlin

**Design:**

[Willy Goossens](#) and [Ilse Diddens](#). Architects  
Graaf van Egmontstr. 15/3  
2800 Mechlin

**Project data:**

Customs square  
2800 Mechlin

**Construction period:**

2006

**Contract value:**

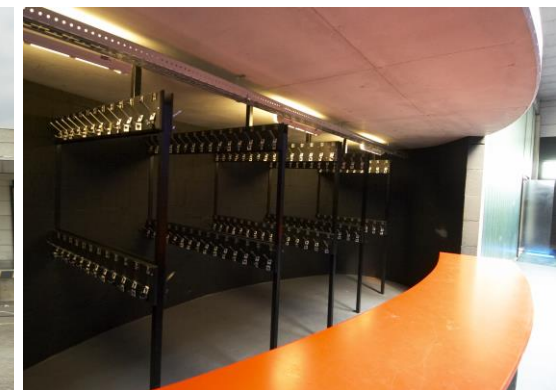
D Class 4

This contract was awarded mid 2006 to [RAMAST BOUW LTD CONSTRUCTION CY](#) after a public price request, launched by the City of Mechlin. In the beginning there was a railroad inside the building, that was kept intact. The bed was covered with glass and was enlightened. On top counters and some small sitting corners were installed, with trainwagon shape. The platform itself is the dance floor. There is room for 750 to 900 party goers, but also smaller parties can be organized.

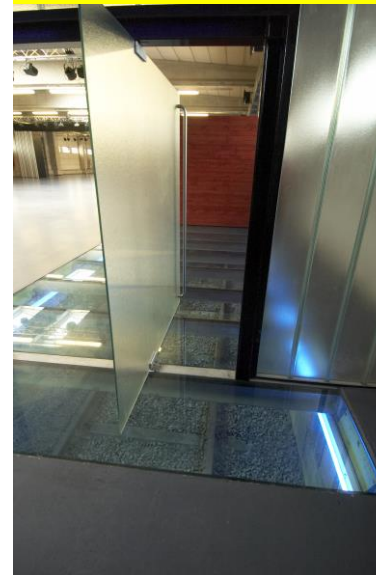
On the large car park approximately 290 parking places are available and about 200 fixed bicycle storages. Through the entrance you swing into the party hal. On the way you pass at your left hand side the equiped lobby (under the DJ-tower) and on your right hand side the toilets. Through the glass door you have access to the holy dance floor. If you are very attentive, you will observe that there are two magnificent counters and two cosy sitting wagons.

( yes, at Platform M everything is railway related! ).

[RAMAST LTD CONSTRUCTION CY](#) performed all the works, [building frame](#), [decoration](#), [special arrangements](#), [electricity](#), [safety](#), [sanitary plumbing](#) and [HVAC](#).



RAMAST = TAILORMADE CONSTRUCTION



RAMAST LTD CONSTRUCTION CY  
Industrieweg 17  
3190 Boortmeerbeek  
Tel. 016 65 90 90  
Fax 016 65 65 39  
E-mail : [info@ramastnv.be](mailto:info@ramastnv.be)  
VAT N° : BE 0461 471 461