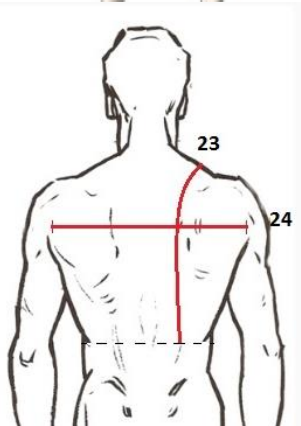
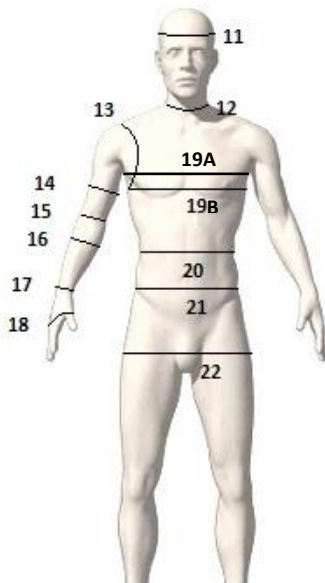
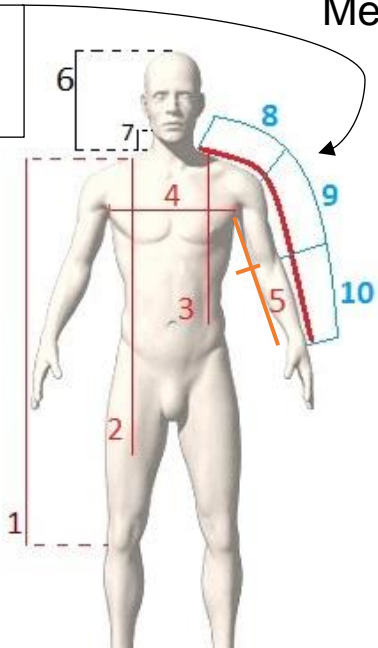


Measurement Chart - Male

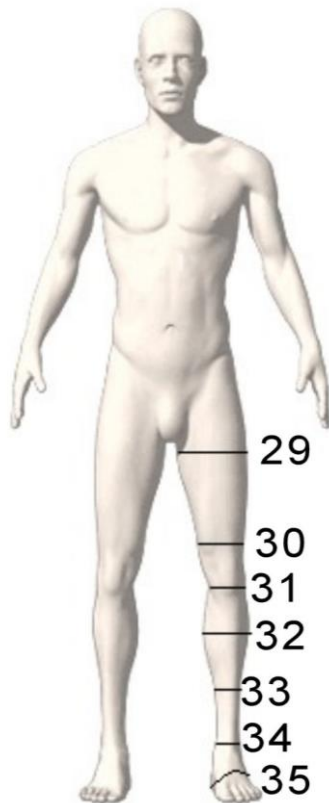
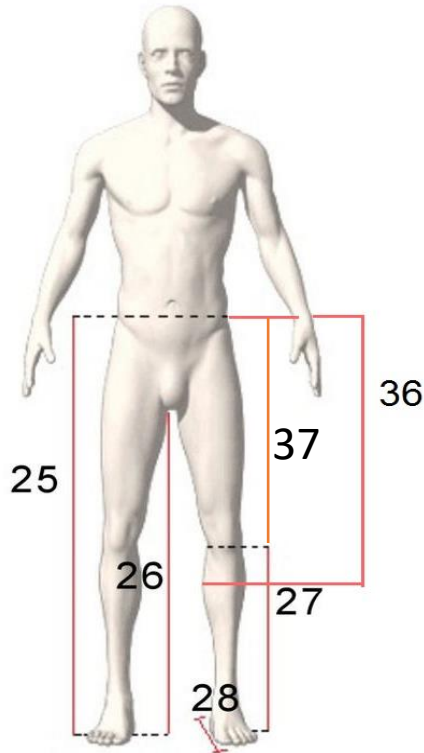
Important:

Take outer arm measurements with arm bent



| | | |
|-----|--|--|
| | HEIGHT (in cm or ft): | |
| | WEIGHT (in kg or pounds): | |
| 1 | Length from shoulder to knee | |
| 2 | Length of the gambeson / robe | |
| 3 | Length from the shoulder to the belly button | |
| 4 | Chest width between arms | |
| 5 | Full arm length - neck to wrist | |
| 5A | Armpit to wrist with straight arm | |
| 5B | Armpit to above elbow with bent arm | |
| 6 | Head height | |
| 7 | Collar height | |
| 8 | Neck to TOP of shoulder | |
| 9 | Top of shoulder to point of elbow | |
| 10 | Point of elbow to wrist | |
| 11 | Head circumference | |
| 12 | Neck circumference | |
| 13 | Armpit circuit | |
| 14 | Bicep circumference | |
| 15 | Elbow circumference | |
| 16 | Forearm circumference | |
| 17 | Wrist circumference | |
| 18 | Hand circumference | |
| 19A | Chest circumference under arms | |
| 19B | Chest circumference at nipple height | |
| 20 | True waist circumference | |
| 21 | Jeans waist circumference | |
| 22 | Hips / seat circumference | |
| 23 | Shoulder to true waist length on the back | |
| 24 | Back width | |

Measurement Chart - Male



| | | |
|-----|--|--|
| 25 | Waist to ground length -full leg length at front | |
| | Waist to ground length -full leg length at side | |
| | Waist to ground length -full leg length at back | |
| 26 | Inner leg length | |
| 27 | Knee to ground length | |
| 28 | Foot length / shoe size | |
| 29 | Thigh circumference | |
| 30 | Above knee / lower thigh circumference | |
| 31 | Knee circumference | |
| 32 | Calf circumference | |
| 33 | Under calf circumference | |
| 34 | Ankle circumference | |
| 35A | Circuit around heel & instep | |
| 35B | Circuit around instep (centre of foot) | |
| 36 | Waist to the beginning of calf | |
| 37 | Waist to knee – at front | |
| | Waist to knee – at side | |
| | Waist to knee – at back | |
| 38 | Rise | |

| | |
|---------------|---|
| Customer Name | |
| Declaration | I hereby declare that the details on this document are an accurate representation of my measurements and give permission for these to be used for the purpose of making such garments as ordered by me. Should these change I undertake to inform Quiverstock in writing in advance of production of my garments, with relation to the production date(s) agreed. |
| Signature | |
| Date | |