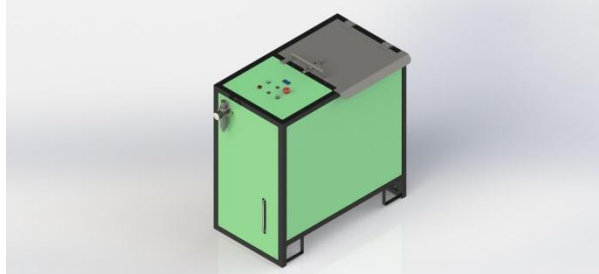


## CONTAINER WASHING UNIT series òTANKWASHERö

### TANKWASHER-W1



The best solution to clean bins, buckets, tanks or other containers with water, detergents or ecological solvents.

Fully pneumatic operation with timed cycle.

90 liter tank with filtering system.

A compact and easily transportable layout.

Developed with modular design, TankWasher-W1 can be upgraded to add external bin cleaning.

Automatic drain.

Sanitized rinse.

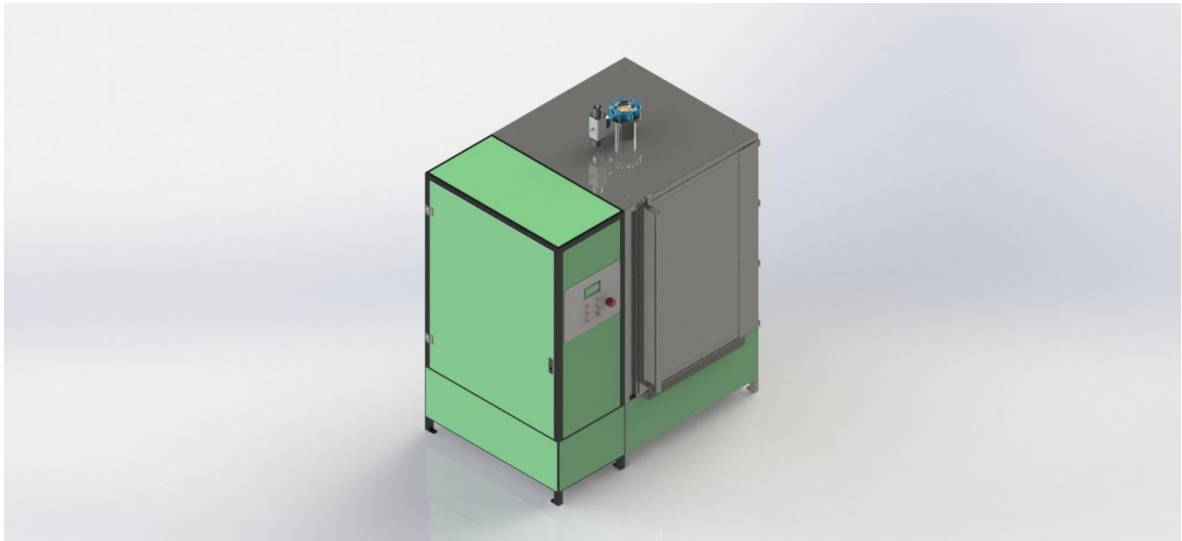
Tank heated and integrated with an efficient fluid treatment system.

Features:

- Average cleaning time 3 minutes
- 90 liter tank
- Cleaning chamber in stainless steel
- Transportable and easy to use
- Fully pneumatic
- Plug & Play
- Compact layout
- Economic



<p><b>WATER WASH</b></p> <ul style="list-style-type: none"> <li>• Dimensions: 1000x500xh 1000mm</li> <li>• Fully pneumatic</li> <li>• Air supply: 8 bar max</li> <li>• Cycle process: automatic timer (10 - 600 sec.)</li> <li>• Pneumatic pump: 8 Bar - 30 l/min</li> <li>• Maximum temperature of the product: 80 ° C</li> <li>• Filtering system: N ° 2 stainless steel filters + N ° 1 pre-filter</li> <li>• Complete with devices safety regulations in force</li> <li>• Average consumption per container: 0.1 l</li> </ul>	<p><b>WASHING WITH ECOLOGICAL/TRADITIONAL SOLVENTS</b></p> <ul style="list-style-type: none"> <li>• Dimensions: 1000x500xh 1000mm</li> <li>• Fully pneumatic</li> <li>• Air supply: 8 bar max</li> <li>• Cycle process: automatic timer (10 - 600 sec.)</li> <li>• Pneumatic pump: 8 Bar - 30 l/min</li> <li>• Filtering System: N ° 2 stainless steel filters + N ° 1 pre-filter</li> <li>• Complete with safety devices in force</li> <li>• Average consumption per container: 0.1 l</li> <li>• Available explosion-proof version</li> </ul>
---	--



## TANKWASHER-W2

The best solution for cleaning drums (plastic or metal/open top or 2 "Plug).

Developed with a modular design, the TankWasher-W2 can be configured to your specific needs and even upgraded if your production grows or changes over time.

The TankWasher-W2 can be configured to clean single or double drums with solvent/water through a medium/high pressure jet inside and outside the container.

Features:

- Average cleaning time 3 minutes
- 80% less waste disposal
- 75% reduction in workforce
- Improve safety and quality
- Modular design
- Easy to install
- Compact layout
- Economical



### WATER WASH

- Single cabin: 1800x1200xh 2000mm
- Double cabin: 3000x1200xh 2000mm
- 1000 liter tank for washing liquid and rinsing with mains water
- Power supply: 3x400V - 50Hz
- Power: 5KW up to 25KW
- Electrical insulation: IP55
- Air supply: 7 bar
- Cycle process: programmable via touch screen
- Washing pressure : 5 bar up to 200 bar
- Maximum temperature of the product: 80 ° C
- Filtering system: N ° 2 Bag filters with stainless steel case
- PLC-controlled cycle with intuitive HMI
- Complete with safety devices in force
- Average consumption per cycle: from 5 to 10 Lt

### WASHING WITH ECOLOGICAL / TRADITIONAL SOLVENTS

- Single cabin: 1800x1200xh 2000mm
- Double cabin: 3000x1200xh 2000mm
- No. 01 tank of 1000 liters for washing liquid
- No. 01 500-liter tank for rinsing liquid
- Power supply: 3x400V - 50Hz (different on request)
- Power: 0.75 kW up to 25 kW (depending on the configuration)
- Fully pneumatic units available
- Electrical insulation: IP67
- Air supply: 7 bar
- Cycle process: programmable
- Washing pressure: 5 Bar up to 40 Bar
- Maximum temperature of the product: 70 ° C
- Filtering system: N ° 2 Bag filters with stainless steel case
- PLC controlled cycle with intuitive HMI
- Complete with safety devices in force
- Available explosion-proof version
- Average consumption per cycle: from 3 to 5 Lt

## TANKWASHER-W3



The best solution for cleaning IBCs (plastic or metal) and mixing trays.

Developed with a modular design, the TankWasher-W3 can be configured to your specific needs and also upgrades as your production grows or changes over time.

The TankWasher-W3 washing machine can be configured to clean multiple products with solvent/water through a medium/high pressure jet or brushes.

Features:

- Average cleaning time 3 minutes
- 80% less waste disposal
- 75% reduction in workforce
- Improve safety and quality
- Modular design
- Easy to install
- Compact layout
- Economical



## WATER WASH

- Dimensions: 3000x2000xh 2500mm  
1000 liter tank for washing liquid and rinsing with mains water
- Power supply: 3x400V - 50Hz (different on request)
- Power: 5.5 kW up to 40 kW
- Electrical insulation: IP55
- Air supply: 7 bar
- Cycle process: programmable via touch screen
- Washing pressure: 6 bar up to 500 bar
- Maximum temperature of the product: 80 ° C
- Filtering system: 2 bag filters with stainless steel case
- PLC controlled cycle with intuitive HMI
- Complete with safety devices in force
- Average consumption per cycle: from 15 to 25 Lt

## WASHING WITH ECOLOGICAL / TRADITIONAL SOLVENTS

- Dimensions: 3000x2000xh 2500mm  
No. 01 tank of 1000 liters for washing liquid  
No. 01 tank of 500 liters for rinsing liquid
- Power supply: 3x400V - 50Hz (different on request)
- Power: 0.75 KW up to 25 KW
- Electrical insulation: IP67
- Air supply: 7 bar
- Cycle process: programmable
- Washing pressure: 6 bar up to 40bar
- Maximum temperature of the product: 70 ° C
- Filtering system: N ° 2 bag filters with stainless steel case
- PLC controlled cycle with intuitive HMI
- Complete with safety devices in force
- Available explosion-proof version
- Average consumption per cycle: from 3 to 5 Lt