

# RAWLNUT FLEXI PLUG

Easy-to-install plug giving exceptional resistance to vibration and corrosion



## FEATURES AND BENEFITS

Resistant to vibration and corrosion

Ideal for unknown substrates and irregular or oversized holes.

Flush collar ensures secure clamping

Made from synthetic rubber with a bonded brass insert for corrosion resistance

## BASE MATERIALS

Suitable for use in:



Solid Brick



Hollow Brick



Vertically-perforated clay block



Lightweight Concrete Block



Hollow Lightweight Concrete Block



Aerated Concrete Block



Plasterboard



Chipboard



Oriented Strand Board



Plastic





## APPLICATIONS

Lighting

Shelves

Trunking

Cable trays

Electrical fittings

Brackets, grips and hooks

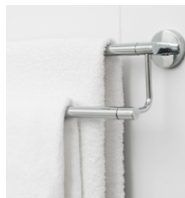
Pictures

Automobile, Yacht

Vending Machine

Laser Printer

Sign Stand

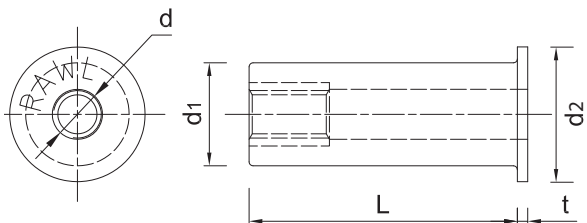


London, United Kingdom  
**Jubilee Line Extension**  
 RAWLNUT Flexi Plug

## INSTALLATION GUIDE

1. Drill appropriate hole. For solid materials, drill hole to length of screw. Clean out hole and remove sharp edges to avoid damaging fixing.
2. Insert the fixing up to its flange.
3. Place fixture in position. Insert screw and tighten to compress sleeve and form a secure fixing. Do not overtighten.
4. Work equally well in uniform or irregularly shaped holes.

## INSTALLATION DATA



## TECHNICAL DATA

Description	Product code	Plug				Screw	Fixture thickness (GRIP)
		Diameter		Length	Flange thickness	Diameter	
		d1	d2	L	t	d	
M4	R-RNT-M4/12	8	7,9	12,6	1,4	4	0 - 4
	R-RNT-M4/24	8	11	24	1,2	4	6 - 14
M5	R-RNT-M5/14	10	12,7	14,1	1,3	5	0 - 5
	R-RNT-M5/26	10	14	26,1	1,3	5	8 - 16
	R-RNT-M5/40	10	14	39,8	1,3	5	20 - 30
M6	R-RNT-M6/16	13	16	16	1,3	6	0 - 3
	R-RNT-M6/27	13	16,3	26,7	2	6	6 - 13
	R-RNT-M6/35	13	16	35	1,3	6	11 - 23
	R-RNT-M6/50	13	16	50	1,2	6	26 - 38
M8	R-RNT-M8/28	16	21,5	27,9	5	8	4 - 10
	R-RNT-M8/30	18	20,5	30	1,2	8	6 - 15
	R-RNT-M8/50	18	20	50	2	8	15 - 39
M10	R-RNT-M10/55	20	22,5	55	1,3	10	20 - 36
M12	R-RNT-M12/80	24	27	80	1,3	12	30 - 50

With screw

Description	Product code	Plug				Screw		Fixture thickness (GRIP)
		Diameter		Length	Flange thickness	Diameter	Length	
		d1	d2	L	t	d	l	
M3	R-RNT-M3X30	8	11	24	1,2	3	30	6 - 14
M4	R-RNT-M4X20	8	7,9	12,6	1,4	4	20	0 - 4
	R-RNT-M4X30	8	11	24	1,2	4	30	6 - 14
M5	R-RNT-M5X20	10	12,7	14,1	1,3	5	20	0 - 5
	R-RNT-M5X30	10	14	26,1	1,3	5	30	8 - 16
	R-RNT-M5X40-50	10	14	39,8	1,3	5	50	20 - 30

Material	Maximum recommended load (Kg)							
	R-RNT-M3X30	R-RNT-M4X30	R-RNT-M5X30	R-RNT-M5X40-50	R-RNT-M6/27	R-RNT-M8/30	R-RNT-M8/50	R-RNT-M10/55
plasterboard 9,5 mm	8	8	9		12	13		
plasterboard 12,5 mm	10	10	11		14	18		
blockwork Solid 7N/mm2				60			100	130
blockwork hollow 7N/mm3				40			65	70
blockwork Solid 3,5 N/mm4				30			50	60
blockwork hollow 3,5 N/mm5				20			30	40