

ALPLA

ALPLA





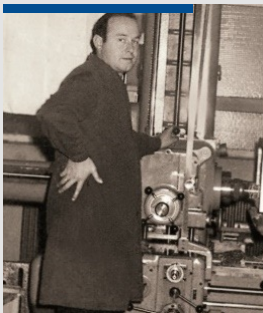
ALPLA



PETCORE CONFERENCE
Changing Supply and Demand
Viewpoint from the Value Chain

Marc de Voogd, 2nd June 2021

1955



**Alpenplastik
Lehner Alwin OHG**
was founded by Alwin
and Helmuth Lehner.

1964



First plant
outside Austria
(Markdorf, Germany).

1968



First plant
in Latin America
(San Joaquin,
Venezuela).

1985



First in-house plant
in Lomazzo, Italy.
PET replaces PVC.

1988



Opening of **Global
Technical Center**
(Hard, Austria).
Setting up further plants
in **Western Europe.**

1990



Expansion
in **Eastern Europe.**
Recycling of first
PCR bottle.

2001



First plant in **USA**
(Atlanta) and **Asia**
(Bangkok).

2007



Grand opening of the
100th ALPLA plant
(Tianjin, China).

2012



Opening of 7th
Technical Center
(Hyderabad, India).

2015



Acquisition of
PLASCO S.p.A. in
Italy and **Argo S.A.**
subsidiary in Egypt.

2016



Formation of a **joint
venture** with the
Egyptian group TABA.

2017



Acquisition of **Star
East Pet Romania.**
Acquisitions in **North
America, Italy and
South Africa.**

2018



Purchase of **Argo S.A.**
thus expanding
**expertise in
pharmaceutical
packaging.**

2020



Major extensions in
the field of **mechanical
PET and HDPE
recycling** as well as
**chemical PET
recycling.**

Facts & Figures Global Presence



3.7

billion euros – total sales 2020



45

different countries



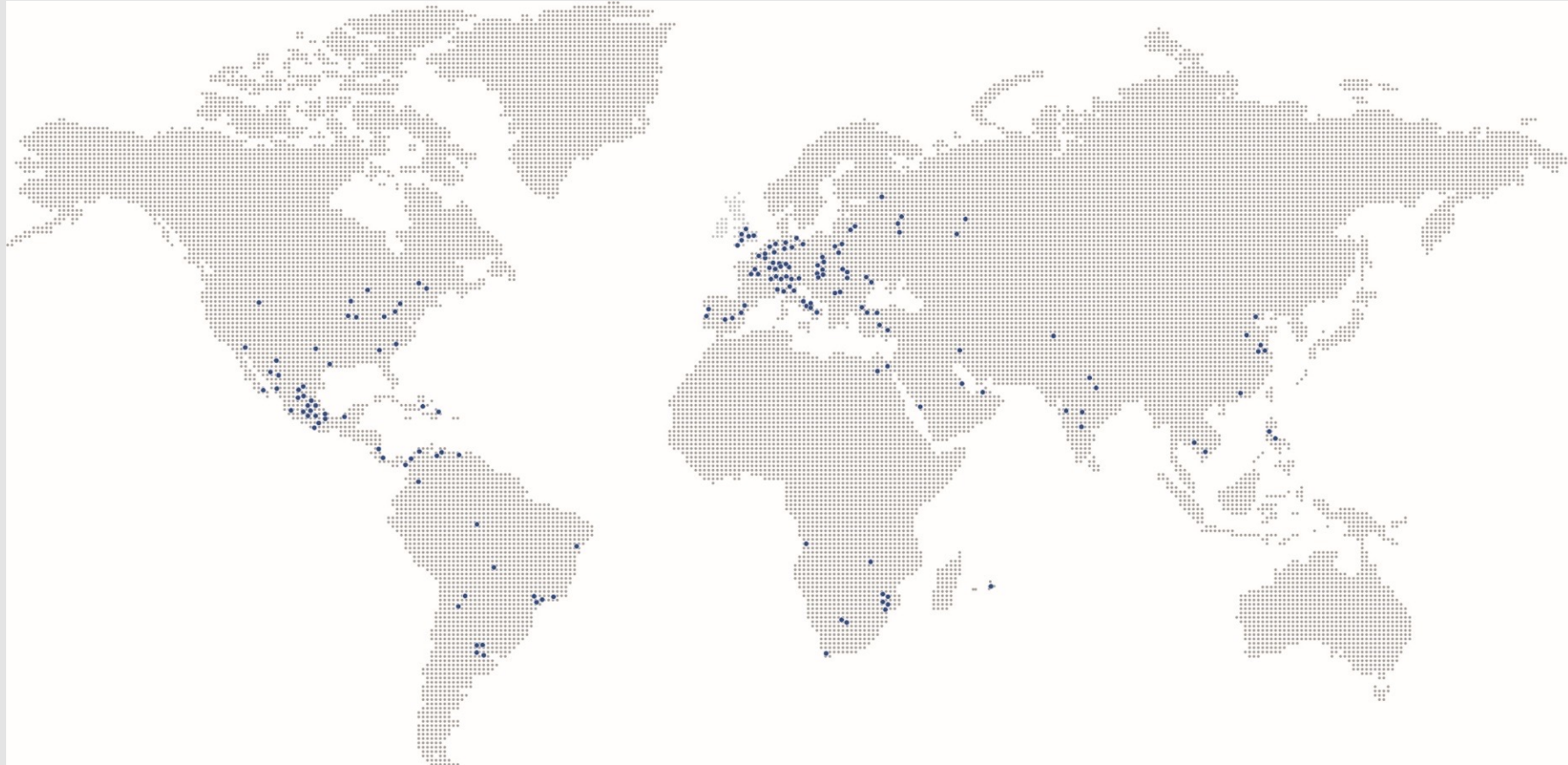
178

production plants



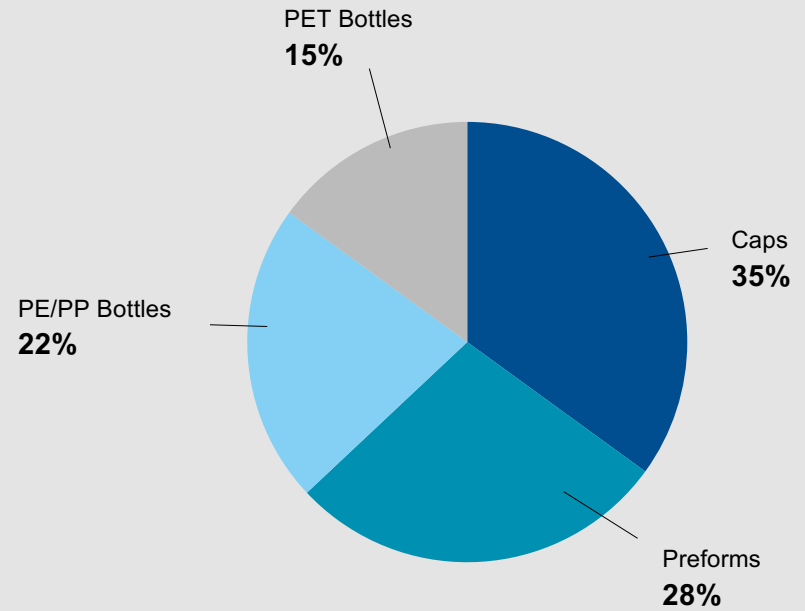
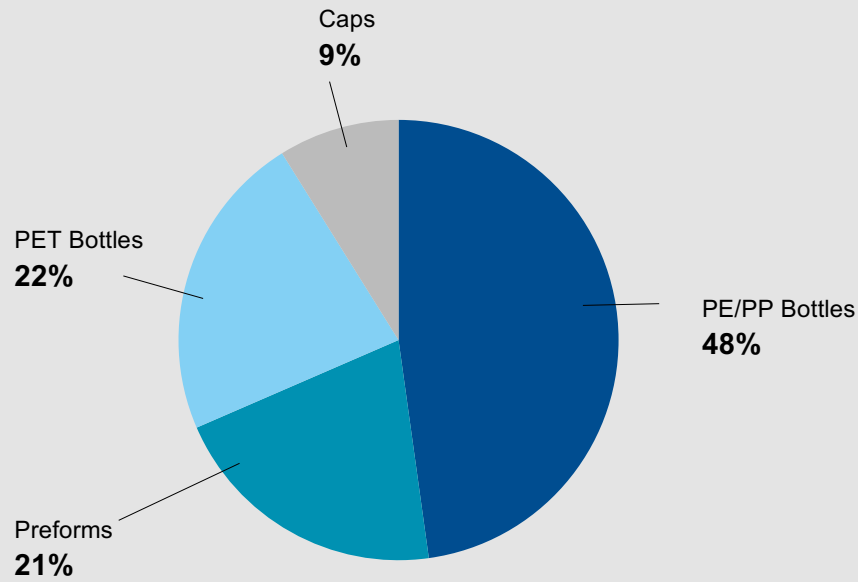
21,600

employees worldwide

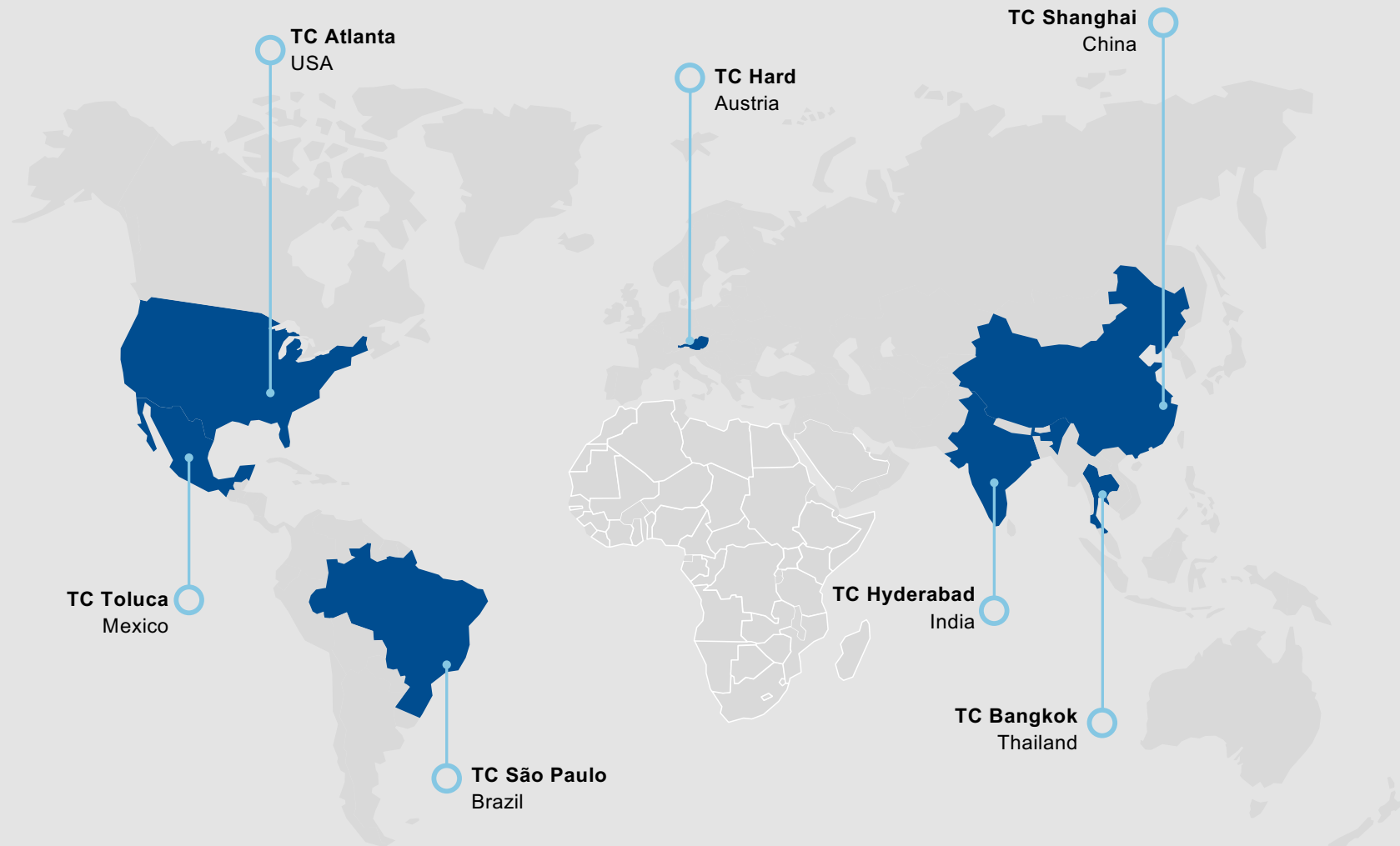


Sales Split 2020

By products: sales splits 2020 / produced pieces 2020



Technical Centers



Leader in Technology Everything from One Source



Development

- Design
- Rapid prototyping
- Sprint

Machines / Moulds

- Packaging machines
- Pilot moulds
- Production moulds

Logistics Solutions

- Inhouse and Wall-to-Wall production sites
- Transport solutions

System Supplier

- Caps & Bottles
(complete packaging systems)

Products and Technology: EBM, SBM, IM-PET, IM-Caps, IBM

Bottles

Materials:

- HDPE
- LDPE
- PP
- 6-layer coex
- PET
- PET-G



Caps

Customized moulds:

- Dosing caps
- 2-piece closures
- 2 component closures
- Flip Top's
- Round caps
- Tamper evident closures
- Sticks



Stock closures

Program:

- PCO 28
- PCO 38
- 48mm Cap
- 2 Starter
- 3 Starter



Preforms

Preform range:

- Water-, Soft drink-, Milk- a preforms
- Multilayer Preforms
- Special applications for all branches



Clients



All products and labels depicted on in this presentation may be protected by third parties and are subject to the regulations of the respective intellectual property laws and property rights of the respective owners.

Alpla will invest 50 Mio EUR/year on average between now and 2025 in further expanding its recycling activities
25 % of Alpla's worldwide total processed material will be PCR by 2025

IMER
MX, Toluca

ALPLArecycling Toluca
(Start-up Q4 2021)
MX, Toluca

PET Recycling Team
DE, Wolfen

TEXPLAST
DE, Bitterfeld-Wolfen

Suminco
ES, Montcada i Reixac
ES, Venta de Baños

PET Recycling Team
PL, Radomsko

PET Recycling Team
AT, Wöllersdorf

ALPLArecycling Anagni
(Start-up Q4 2021)
IT, Anagni

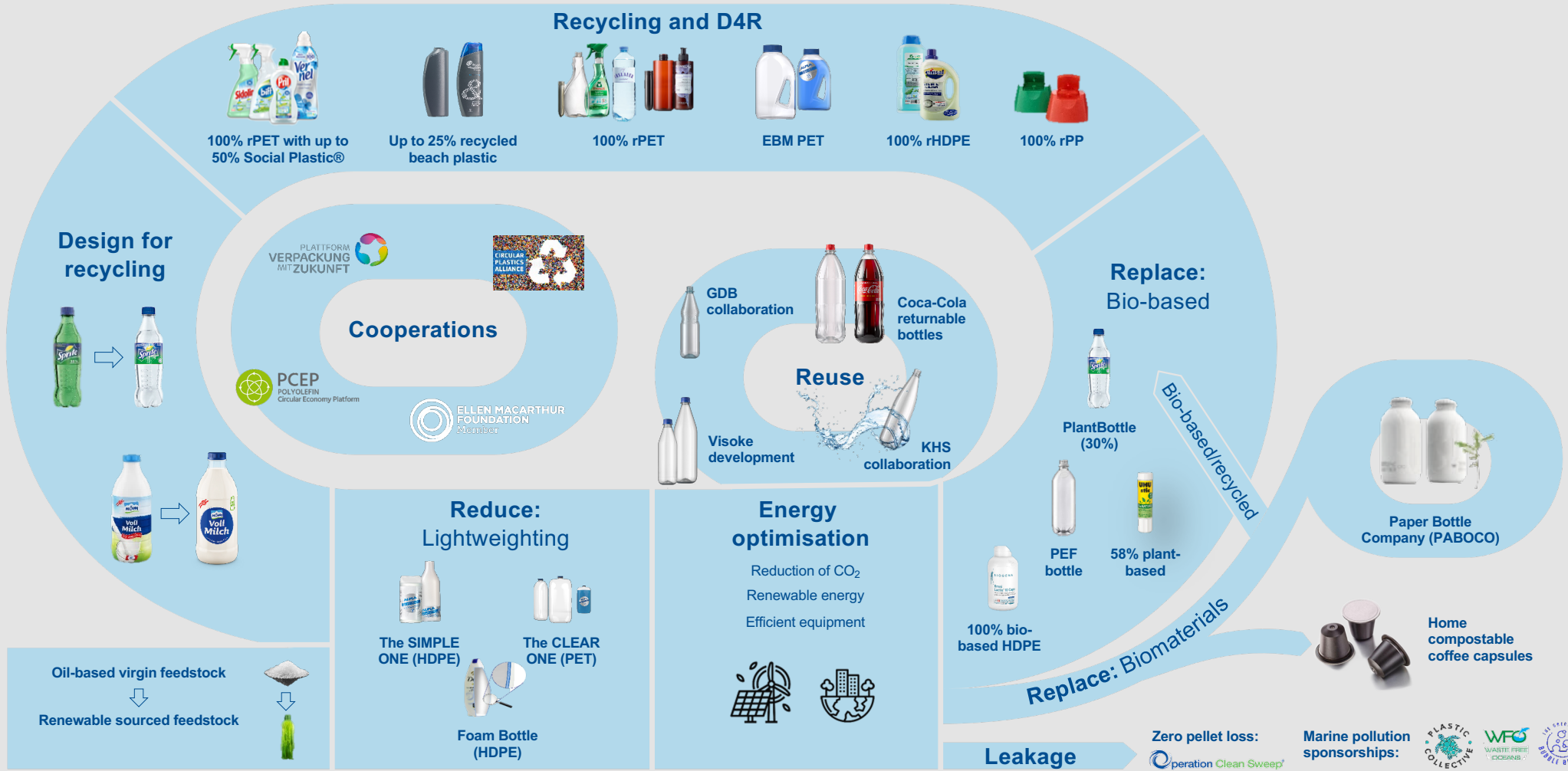
Envicco
(Start-up Q4 2021)
Thailand

Prospective overall recycling capacity

100,000 tonnes
of granules made of
post-consumer PET bottles

50,000 tonnes
of granules made of
post-consumer PE bottles

Alpla's Transition to the Circular Economy



Best Recycling practices at ALPLA



100% rPET

WERNER & MERTZ



100% rPET

VÖSLAUER



58% plant-based
46% decrease in CO₂ emission

UHU STIC RENATURE



Up to 100% recycled plastic

ECOVER



25% rHDPE

HENKEL



100% rHDPE from recycled plastic (Gelber Sack)

WERNER & MERTZ



Flip top closure 100% rPP

WERNER & MERTZ



Up to 25% recycled beach plastic

HEAD & SHOULDERS BY P&G



BOTTLEWALL
VORZUGLICHE FUNKTION
UND WENIGER PLASTIK
100% RECYCLIERBAR


Foam bottles, lighter by 15%
100% recyclable

UNILEVER



Super lightweight HDPE bottles
Up to 40% rHDPE

MILK MARKET UK




100% rPET

L'OREAL PARIS BOTANICALS



100% rPET

PEPSI



50% rPET

COCA-COLA COMPANY



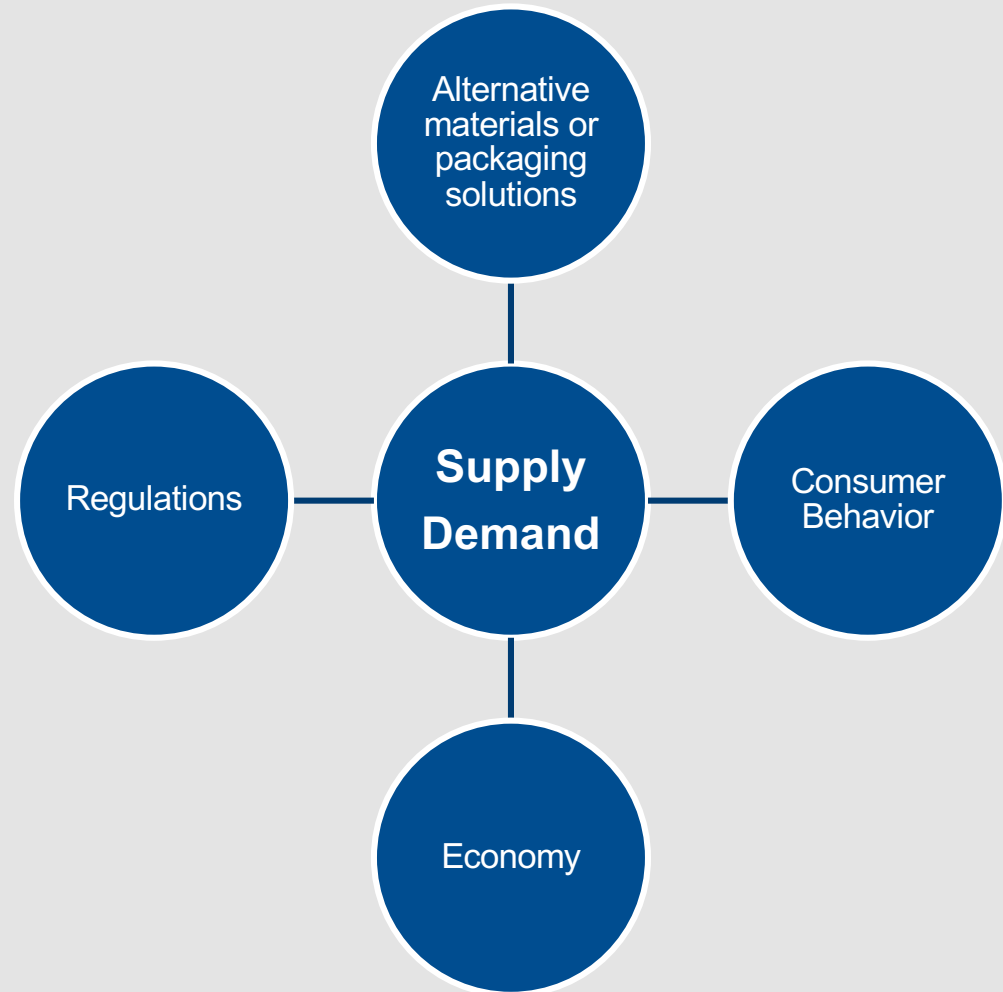
100% rPET
Up to 50% Social Plastic®

HENKEL

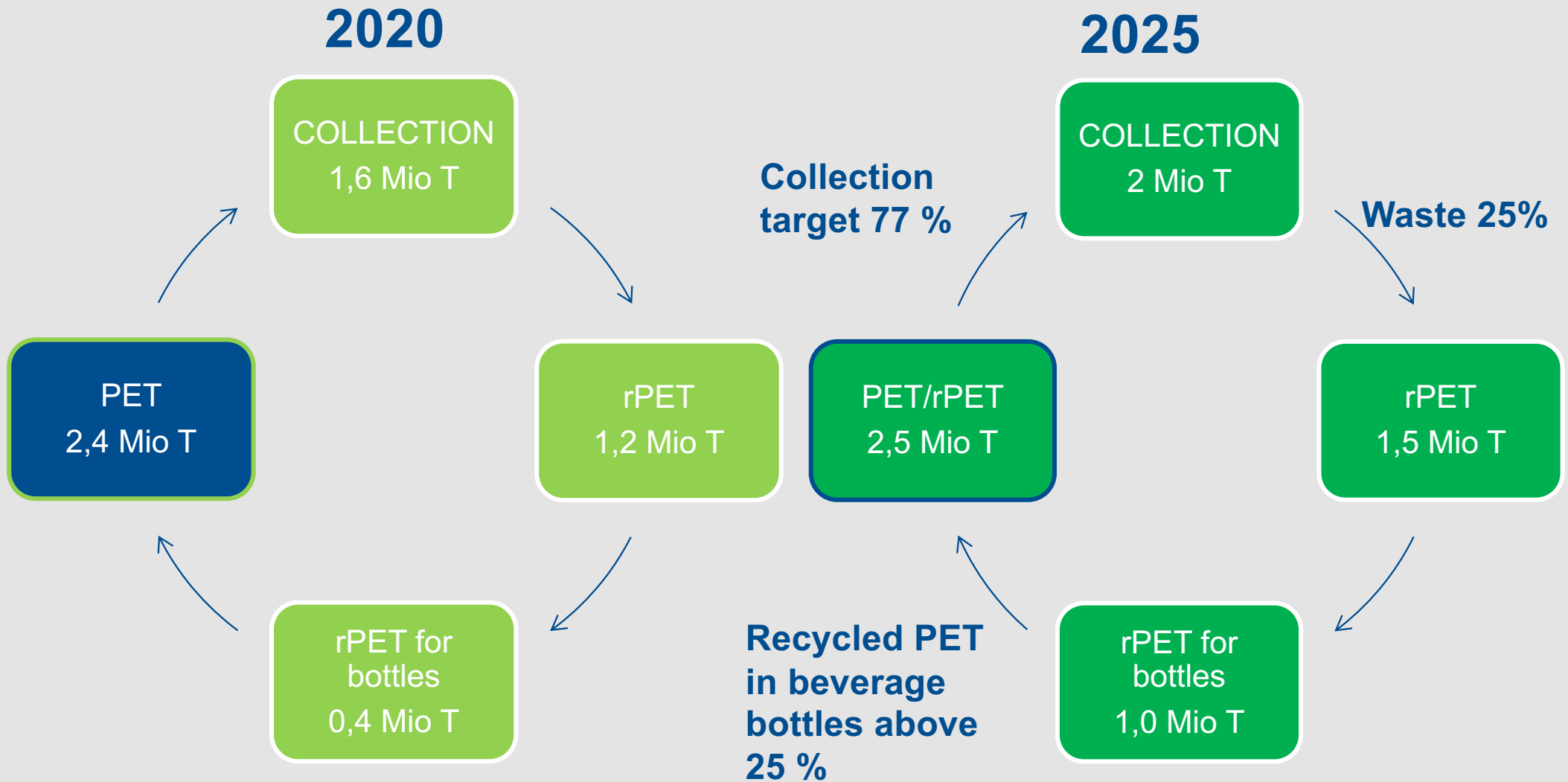
Supply/Demand PET/rPET factors of influence

Current status:

- **Global Production Overcapacity PET**
- **Collection rates too low - lack of rPET**
- **Small growth in demand mix PET/rPET**



PET cycle EU BOTTLES



PET cycle EU BOTTLES

VISION

Collection rate 99 %
(deposit system)

COLLECTION
2,48 Mio T

Waste rate reduced through
design for recycling, better
sorting and chemical recycling
to less than 10 %

rPET/PET
2,5 Mio T

rPET
2,2 Mio T

rPET for
bottles
2,2 Mio T

Full bottle to bottle recycling
possible through 70 %
mechanical and 30 % chemical
recycling

