



A cozy office and functional laboratory space strategically located just outside of the city center. Suitable for companies looking for a place to perform their operations in proximity to Karolinska Institutet, Karolinska Hospital and many biotech companies in the area.

OFFICE AND LABORATORY SPACE TO LEASE



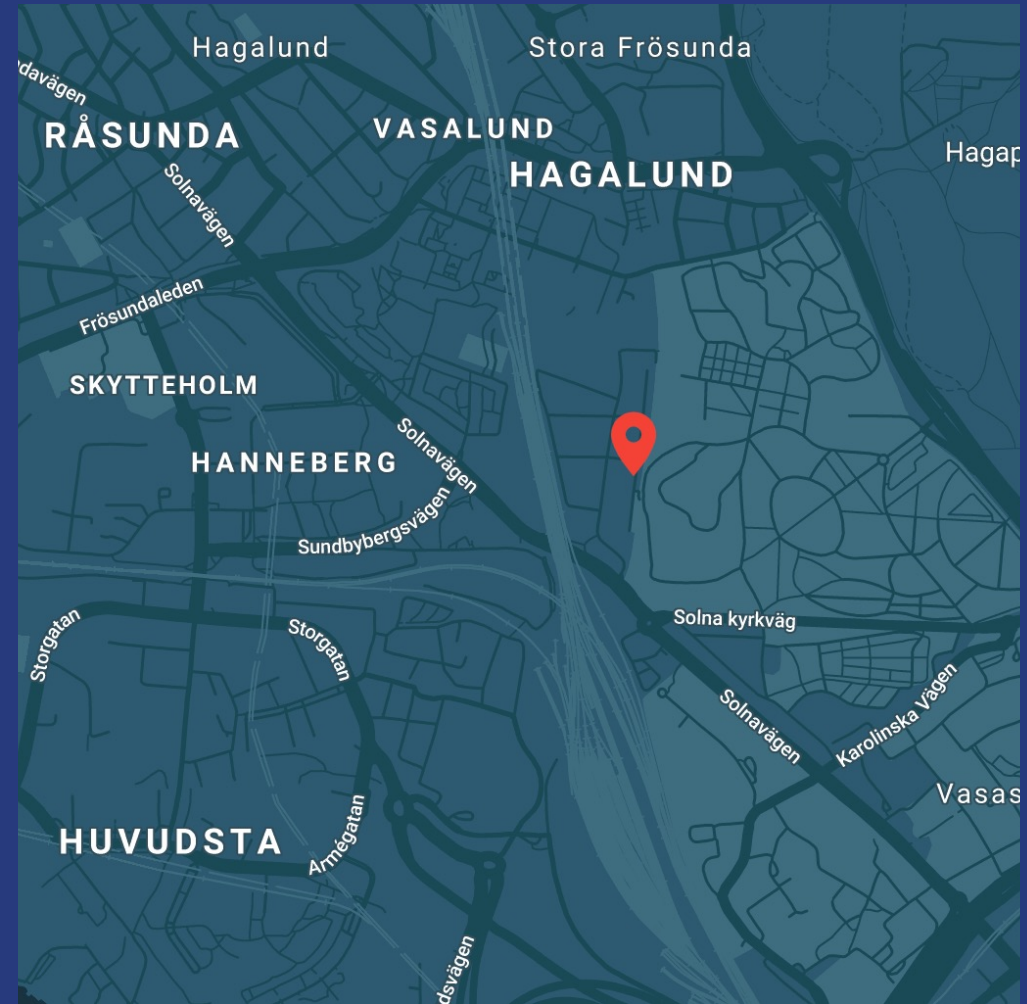
A PRIME LOCATION

Address: Banvaktsvägen 20, 171 48 Solna

THE FACILITIES are strategically located in Hagalund Business Area, only 1.5 km from Stockholm center and 1.5 km from Solna city center.

The area is going through a lot of development and will feature one of the new subway stations on the yellow line.

The proximity to Karolinska Hospital and Karolinska Institutet makes the facilities especially suitable for companies in the life science sector.



FLEXIBLE SPACE

THE FACILITIES offer a flexible space with a mix of lab and office areas divided into two floors with plenty of storage space.

FLOORS

We offer a lease of floors 3 and 4 with option for extra space on the 2nd floor for meetings.

STORAGE

Additional 25 m² of storage space is available in the basement.

SIZE

The total area to lease is 651 m² divided into two floors: 327 and 324 m² respectively.

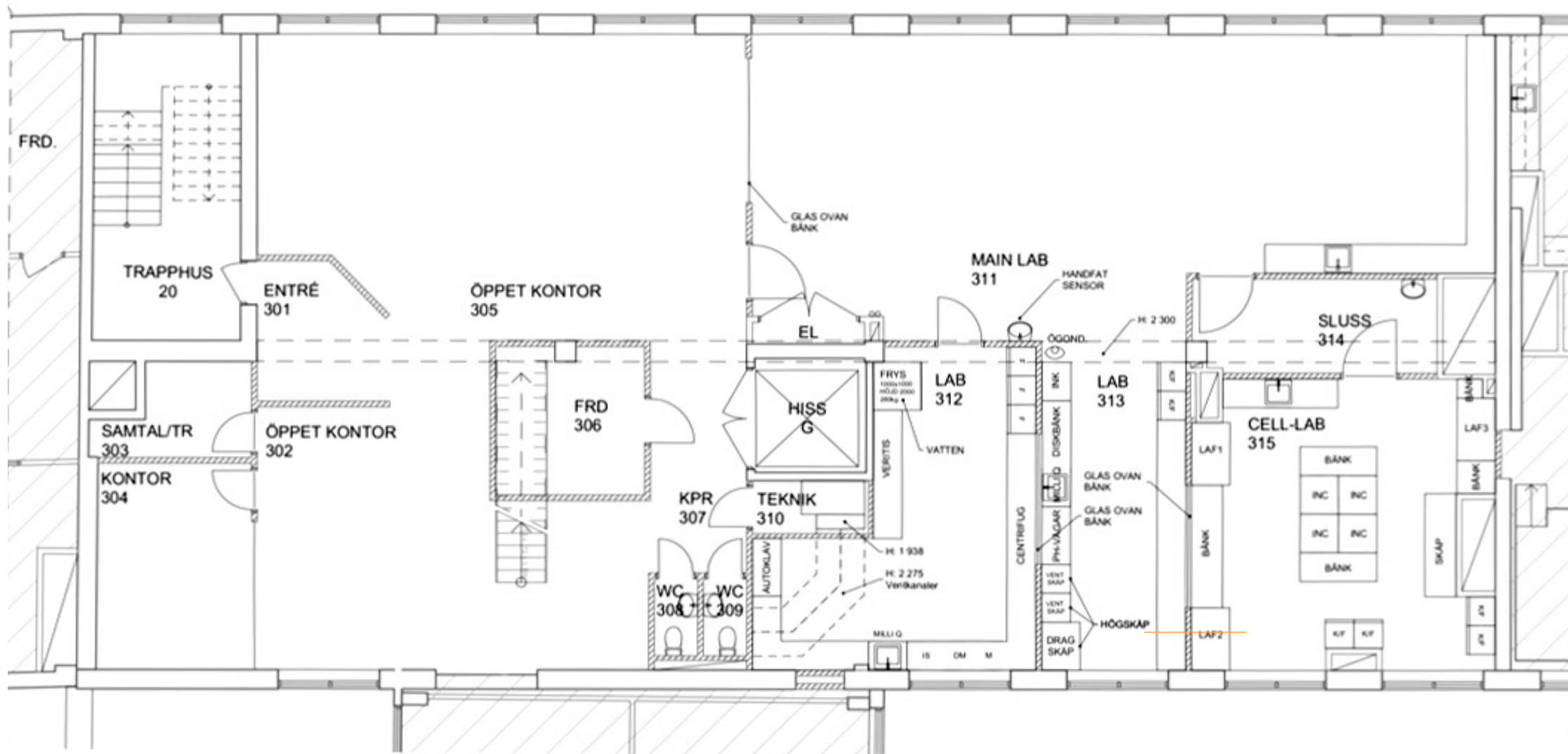
Space between laboratory and office areas is divided equally.

LAB ENVIRONMENT

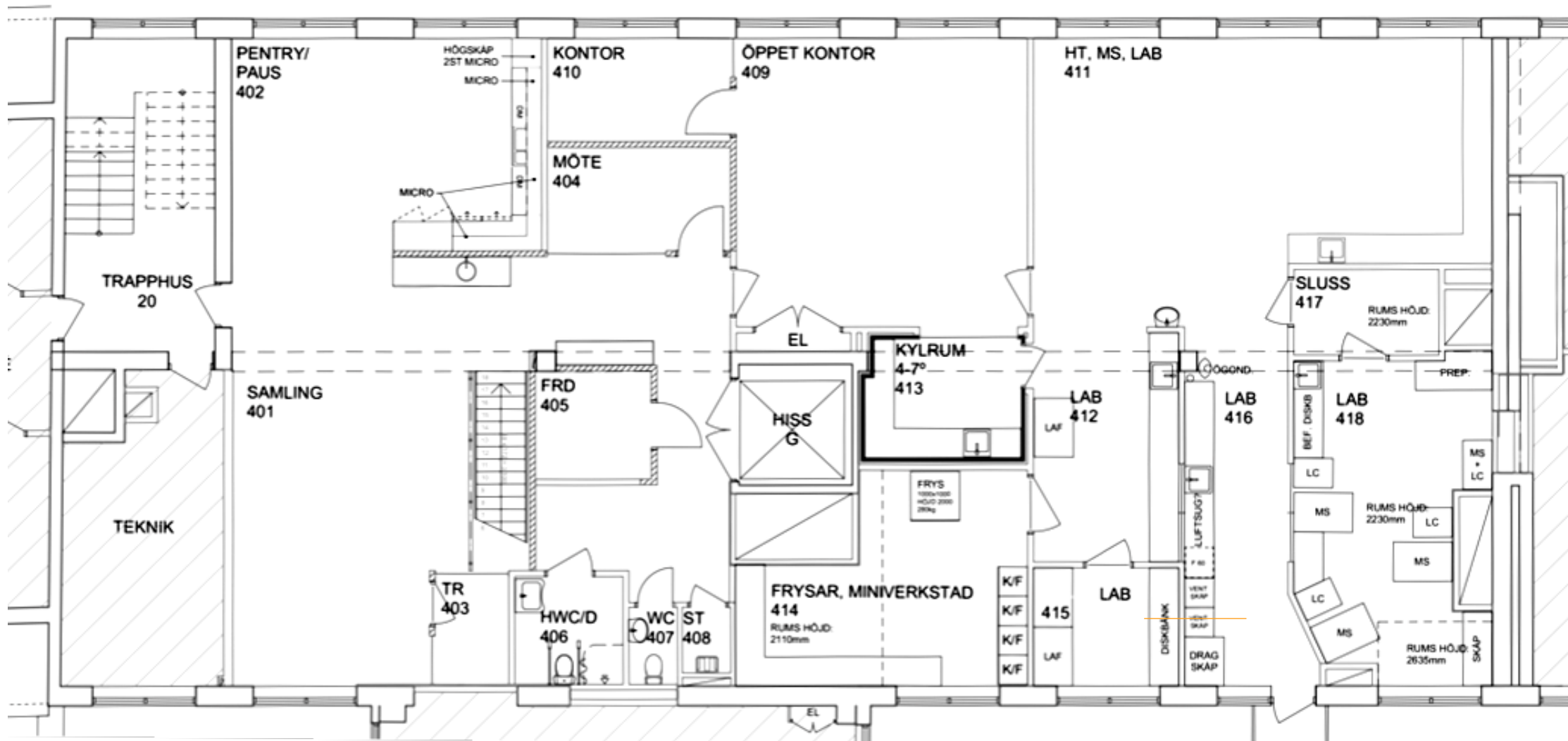
Electricity, heating, ventilation, de-ionized water, liquid nitrogen and gas are available.

Lab and office furniture can be included.

3rd FLOOR 327 m²



4th FLOOR 324 m²





CONNECTION

There is an electric bus that shuttles between Odenplan, St Eriksplan and Hagalund. There are busses to Solna Centrum and Odenplan nearby. E4 highway and Norra Länken / Essingeleden makes is easy for car commute as well.



PARKING

Parking in garage through landlord is available. There is also an option for a cheap parking on the street with Solna stad.



SERVICE

There are restaurants and a food truck in the area. Many additional services are available at Solna Centrum withing walking distance.

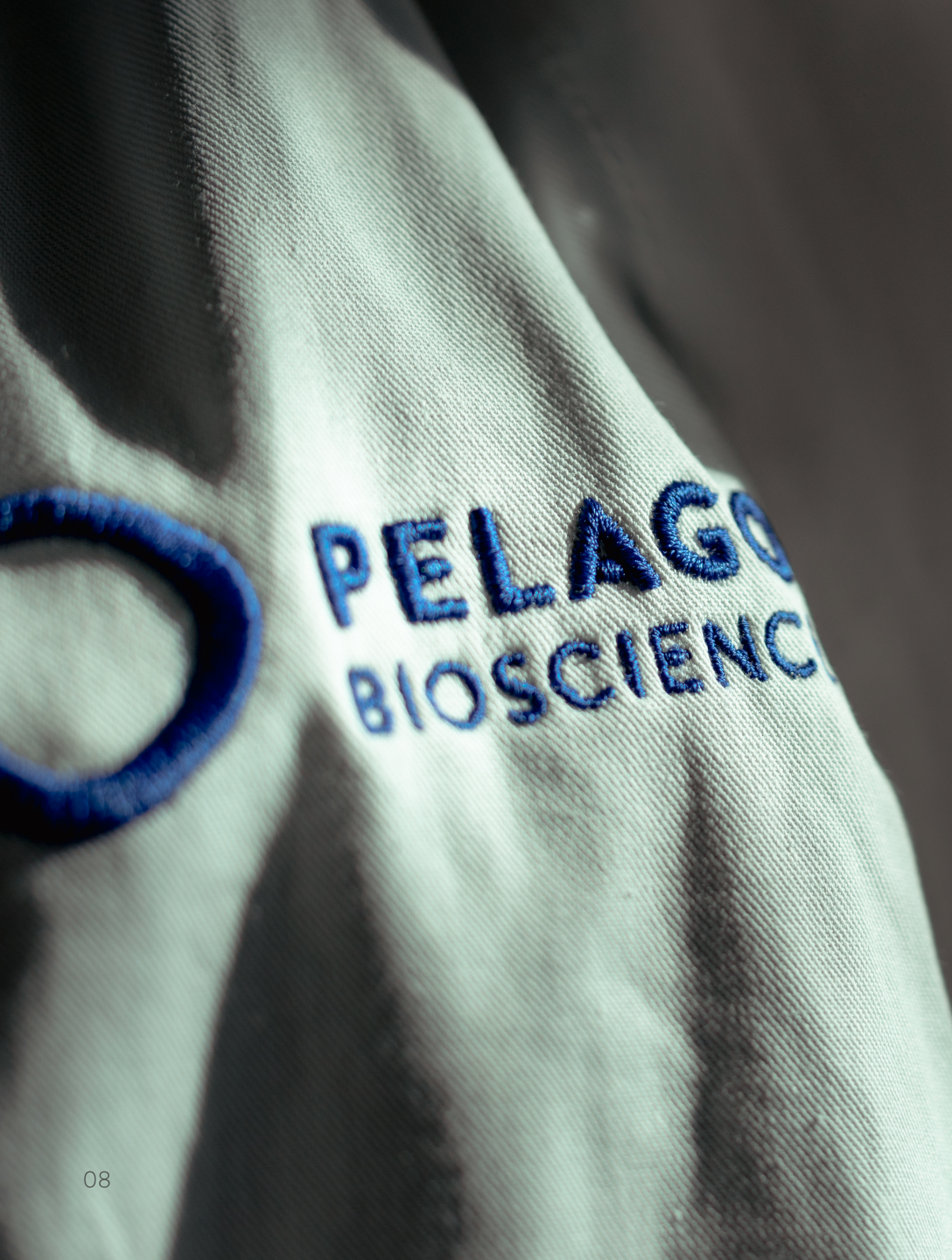
AVAILABILITY

START:

Around 1 March 2022
the starting date is
flexible and can be
negotiated.

END:

Current lease end date is
31 December 2023, but
the landlord has indicated
that an extension is
possible.



ABOUT PELAGO BIOSCIENCE

Pelago Bioscience was founded in 2013 with the aim to develop the patented Cellular Thermal Shift Assay (CETSA®) for maximum utility and customer value in drug discovery and diagnostics.

Today, we deliver in situ target engagement studies to accelerate preclinical and clinical drug discovery and development to a world-wide customer base.

CONTACT US



For more details and inquires,
please contact:

JOHAN KARLSSON

Finance Manager

+46 (0) 730 79 74 34

johan.karlsson@pelagobio.com

