

PROFESSIONAL DIPLOMA IN PASTORAL SUPERVISION 2026-2027



A course to develop understanding, theory, and skills in reflective supervision for pastoral and ministerial settings.

WHO IS THE COURSE FOR?

Clergy, Pastoral Care Team leaders, Lay Ministers, Counsellors, Psychotherapists, Chaplains, Pioneer Ministers and Spiritual Directors.

COURSE ETHOS

The Church in our current climate faces both crisis and opportunity. Reduced clergy numbers mean that the tasks of ministry need to be reviewed, prioritised and structured as never before.

The changing nature of local ministry increasingly requires both lay and ordained ministers to oversee teams and develop skills in reflective pastoral supervision, in order to enable one another to survive and thrive amidst the pressures of 21st century ministry. Pastoral supervision supports practitioners to increase their skills, develop wisdom and remain accountable to those they serve.

As the Church nationally recognises that ongoing support for ordained ministers and active lay people is more vital than ever, we endeavour to encourage and resource this important ministry of watching over one another in love.

DO YOU WANT TO...



Understand Pastoral Supervision?

Gain an in-depth understanding of the theory of pastoral supervision and how it can be effectively used to support ministry.



Develop Your Skills?

Foster and develop your supervisory skills through observing and participating in skills work practice.



Benefit from being part of a diverse learning community?

Learn alongside people of different backgrounds, both ecumenical and ministerial, and benefit from the range of experience held by learners and tutors.

I think it's probably the best put together course I have come across...I would really recommend it.



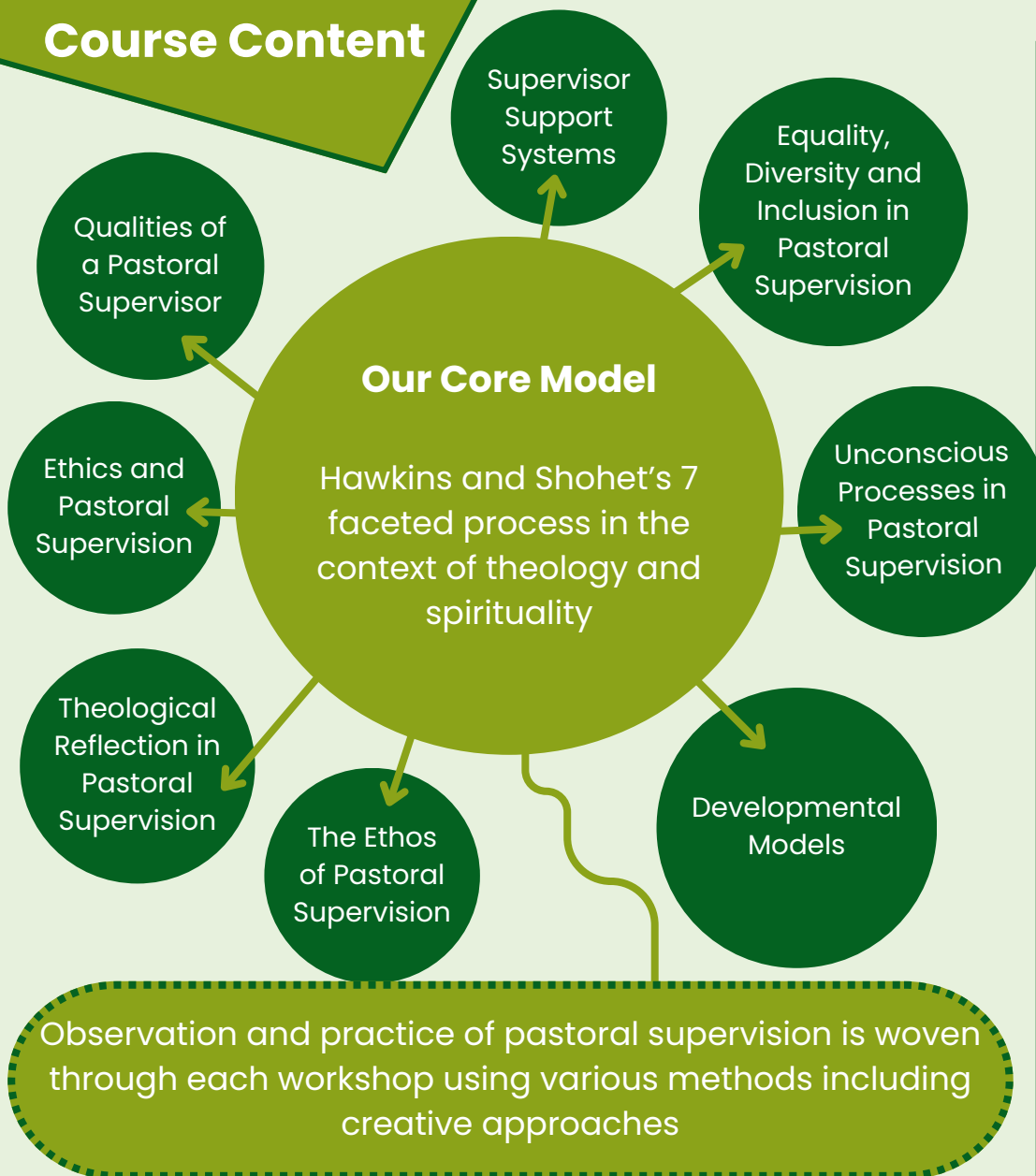
PDPS Course Graduate



Six two-day workshops delivered at six week intervals

Beginning Autumn 2026

Course Content



How will I learn?

The course operates as an ecumenical and multidisciplinary learning community, where your ministerial and life experience is valued as the raw material for learning. This is built upon through a variety of activities, including facilitator and student-led seminars, small group experiential tasks and pastoral supervision demonstrations.

Your development as a supervisor will be monitored through assignment writing, a seminar presentation, peer supervision activities and recorded sessions with ongoing feedback from your peers and summative assessment by group facilitators.

Assignments are designed to contribute to your practice and will combine to create a portfolio of evidence of professional competence in pastoral supervision.

What will I gain on completion?

- You will be able to give and receive pastoral supervision, working as a reflective practitioner with individuals and within groups.
- You will have met the training criteria for accreditation by the Association for Pastoral Supervisors and Educators (APSE) www.pastoralsupervision.org.uk
- The **Professional Diploma in Pastoral Supervision** is awarded to you by the Institute of Pastoral Counselling and Supervision (IPCS).



ONE COURSE – TWO MODES

We run two cohorts for PDPS via different modes. You can choose which mode of learning and workshop dates will suit you and your circumstances best.

HYBRID MODE

Three workshops taking place online via Zoom and three workshops taking place in person in Loughborough, UK.

Workshop 1 29–30 September 2026 (In Person)

Workshop 2 17–18 November 2026 (In Person)

Workshop 3 12–13 January 2027 (Online)

Workshop 4 23–24 February 2027 (Online)

Workshop 5 27–28 April 2027 (Online)

Workshop 6 15–16 June 2027 (In Person)

ONLINE MODE

All six workshops taking place online via Zoom.

Workshop 1 21–22 October 2026 (Online)

Workshop 2 2–3 December 2026 (Online)

Workshop 3 13–14 January 2027 (Online)

Workshop 4 3–4 March 2027 (Online)

Workshop 5 21–22 April 2027 (Online)

Workshop 6 19–20 May 2027 (Online)

How do I qualify?

This course is suitable for you if:

- You are currently engaged in pastoral and ministerial work in your context.
- You have supervisory responsibilities within your setting where you can practise and apply your learning.
- You have good listening skills.
- You comply with your professional Code of Ethics.

COURSE
FEE
£1,650

APPLY NOW

To find out more details and how to apply, please book on to one of our online Taster Sessions.

Monday 16th March 2026 10am –1pm

Tuesday 5th May 2026 1pm–4pm

Wednesday 3rd June 2026 1pm–4pm

Email kathryn.addis@pastoralcs.org.uk
for a booking link



"I have found the content invaluable both for pastoral supervision but also for pastoral ministry."

PDPS Course Graduate