




Sustainable packaging

Environmentally friendly products
and technologies

#ULMAweCare

A close-up photograph of a person's hands cupped together, holding a mound of dark, rich soil. A small, vibrant green seedling with three leaves is growing out of the soil. The background is dark and out of focus, suggesting an outdoor setting. The image is positioned on the right side of the slide, partially overlapping a diagonal white-to-black gradient.

IFFA 2019
May 4 – 9 | Frankfurt Am Main
Hall 11.0 – D81



#ULMAweCare

We are strongly committed to minimize the impact on the environment reducing the amount of packaging required by our solutions, while maintaining the benefits in terms of safety, long-term preservation of products, reduction of product waste, and using more recyclable and compostable materials.



Automation of packaging lines

Packaging inspirations from all over world

#ULMAweCare

Service

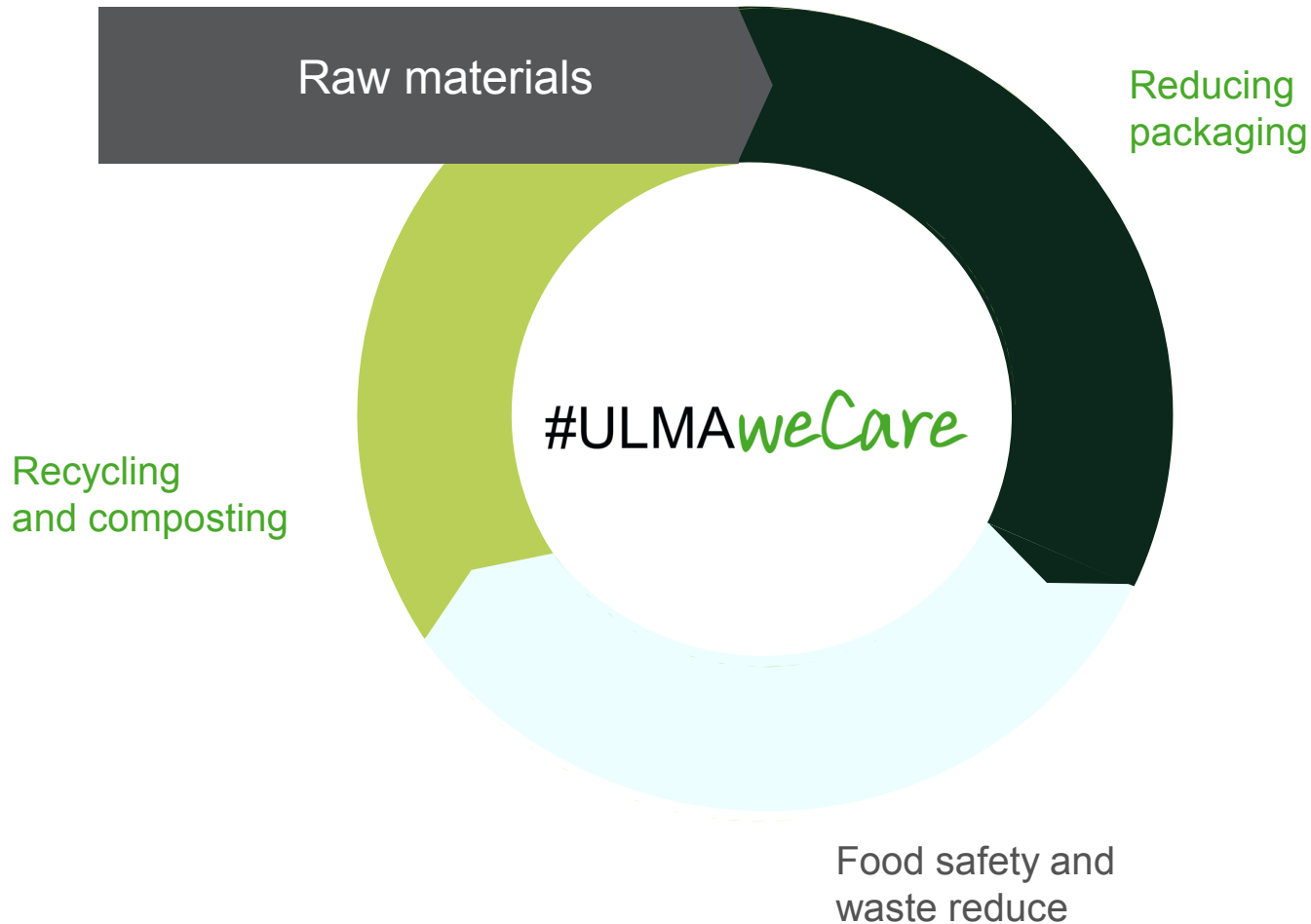
ULMA digital

#ULMAweCare

SUSTAINABLE
PACKAGING

IFFA

Sustainable packaging



#ULMAweCare includes several areas of research and development, such as the reduction of packaging, the use of thinner films, the incorporation of recyclable and compostable materials such as cardboard or cellulose, and the use of mono-material plastics to make recycling processes easier. All this guaranteeing flexible solutions, with high productivity ratios and without compromising the hygiene of the process to comply with all regulations and recommendations.

Sustainable packaging



#ULMAweCare benefits:

100% recyclable cardboard.

Up to 80% plastic reduction.

Fully separable materials.



Sustainable packaging



REDUCEDSCRAP™
#ULMAweCare

#ULMAweCare benefits:

Reduced use of plastic film.

Up to 40% film scrap reduction.



Sustainable packaging



#ULMAweCare benefits:

Reduced use of plastic film.

Bottom rigid support film replaced by paper based material.

Sustainable packaging



#ULMAweCare benefits:

Thinner gauge film.

Compostable tray.



Sustainable packaging



#ULMAweCare benefits:

Reduced packaging (trayless)



Sustainable packaging



#ULMAweCare benefits:

Reduced packaging (trayless)



Sustainable packaging



#ULMAweCare benefits:

Reduced use of plastic (cardboard tray)

Thinner gauge film.



Sustainable packaging



#ULMAweCare benefits:

Reduced packaging (thinner bottom film)

Recyclable carton base



Sustainable packaging



#ULMAweCare benefits:

100% compostable pack

Less plastic (cellulose tray)



Sustainable
packaging

#ULMAweCare

Find out more sustainable
solutions at our stand at IFFA



ULMA DIGITAL
for real business

#ULMAweCare

IFFA

ULMA DIGITAL

UPC 4.0

The new UPC 4.0 control platform has made machine operation easier than ever.

Ease of operation

- Several access levels and user validation by Active Directory or RFID
- Customized interface through which operators can rearrange the display with their favorite and most frequent shortcuts.
- Possibility to display machine's instruction manuals as well as videos in the same operation interface.
- SOP (Standard Operating Procedure) to find step-by-step guidance of the most common operations with pictures and videos.
- Seamless integration of devices such as printers, gas analysers etc in the operator panel.

Assistance for maintenance

- On-screen help.
- Integrated maintenance scheduler software.
- Logger following CFR21 part 11 recommendations.



INDUSTRY 4.0

ULMA DIGITAL

Connectivity

- Remote desktop access to operate as you were in front of the machine.
- FTP access for files (log, recipe files, manuals etc.).
- Seamless integration with MES and ERP systems via OPC Classic, OPC UA and Modbus TCP.
- Connectivity to the Cloud via MQTT.
- RSM (Remote Service Management) for remote assistance.

Increased productivity and OEE (Overall Equipment Effectiveness)

- PackML (OMAC) providing standardised state indicators.
- Set of tools oriented to increase productivity (UDAQ).

myULMA

Customer Portal

- Equipment's online and offline analytics with OEE monitoring through user friendly environment.
- Spare part navigator with shopping cart integrated.



INDUSTRY 4.0

SERVICE

taking care of the important things

#ULMA *weCare*

IFFA



Service

SERVICE

Taking care of the important things.

We know how important it is to ensure that our equipment operates with maximum efficiency, to bring added value to your business.

Our proximity: the best help is the closest one

Through our in-house service network and our network of distributors we are able to ensure that there is a technical service center near to every single one of our customers

System installation

- Optimal ground surface design.
- Installed by experts from ULMA.
- Multidisciplinary teams to guarantee success.
- Factory Acceptance Test (FAT).





SERVICE

Technical Assistance

- Immediate professional service.
- Service network of over 250 people.
- Local service in over 50 countries.
- Teams specialized in each product line.
- Support from an Expert Technical Committee.

Spare parts

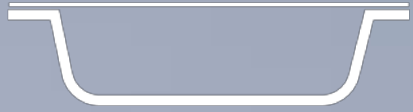
- Original spare parts that ensure compatibility and outstanding quality.
- Minimising downtime and maximising productivity.
- Stock of spare parts in more than 20 countries to expedite the delivery.
- Option to obtain a customised multi-level spare parts kit.
- Deliveries below 48h on more than 85% of parts.

Preventive maintenance

- Maintenance packages adapted to your needs.
- Equipment modernisation and improvement services.

Service





THERMOFORMING

#ULMA *weCare*

IFFA



TFS 700

The TFS 700 is a high production thermoformer for sliced products.

- High production: 120 ppm.
- MAP packing.
- Two double (top and bottom) labelers integrated.
- Multi-format machine with easy changeover.
- Designed to be integrated into a fully automated slicing line.

#ULMAweCare benefits:

Reduced use of plastic film. Low density top film.

Mono rPET bottom film based on up to 80% recycled material.





TFS 200 MSV

ALL IN ONE

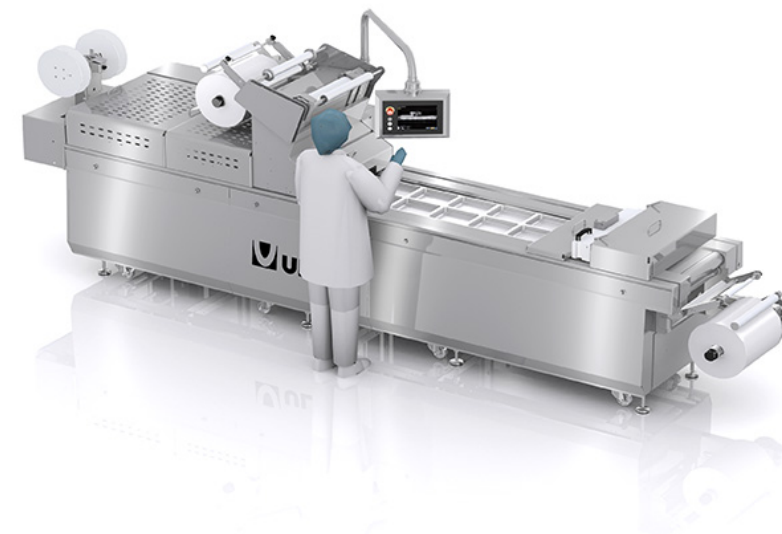
The TFS 200 MSV thermoformer is a highly versatile thermoformer ready to make MAP, SKIN and VACUUM packages.

- All in one: MAP, SKIN and VACUUM.
- Protruding up to 45 mm.
- Compatible with rigid and flexible materials.
- Combinations with carton materials are also possible.

#ULMAweCare benefits:

Reduced use of plastic film.

Bottom film rigid support replaced by paper based material.





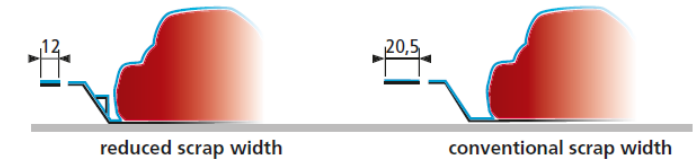
TFS 407 R

The TFS 407 R is a Darfresh® thermoforming machine that uses less film material than ordinary skin thermoforms.

- Up to 40% film scrap reduction.
- Up to 12% cycle speed increase.
- Maximum shelf life.
- Unique high quality and consistent “Easy Open”.

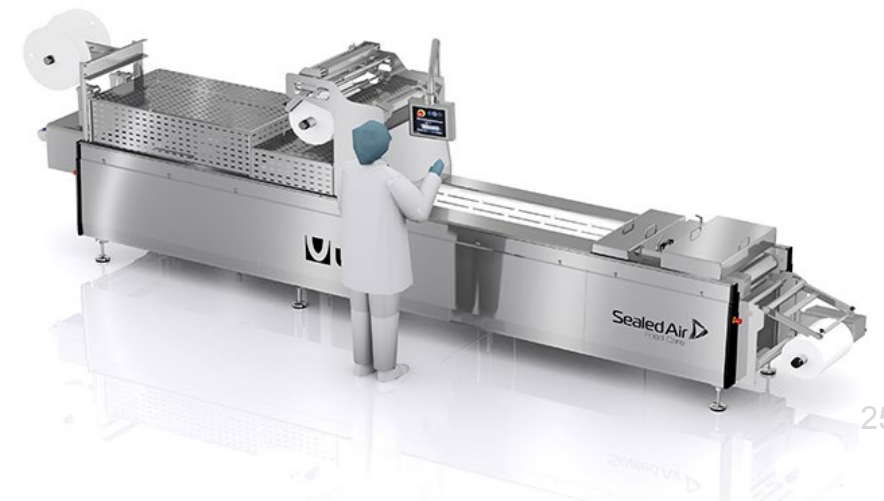


REDUCEDSCRAP™
#ULMAweCare



#ULMAweCare benefits:

Reduced use of plastic film.





FLOW PACK (HFFS)

#ULMA *weCare*

IFFA



FLOW-VAC® FV 55 SD

The FV 55 SD machine that creates one end open bags that exit the machine alternatively open on the front or on the back end. A 90° transfer system will transfer the products paired to the buffering belt of the vacuum chamber, so that whole productivity of the vacuum chamber can be achieved by profiting the use of both seal bars at vacuum chamber.

- Washdown version with minimum IP65 protection level in all components.
- All belt conveyors can be easily removed for sanitation.
- Process automation with high flexibility.
- Increased productivity.
- Less product handling and contamination.

#ULMAweCare benefits:

Packaging material optimization. Bag lengths are automatically sized according to product length.

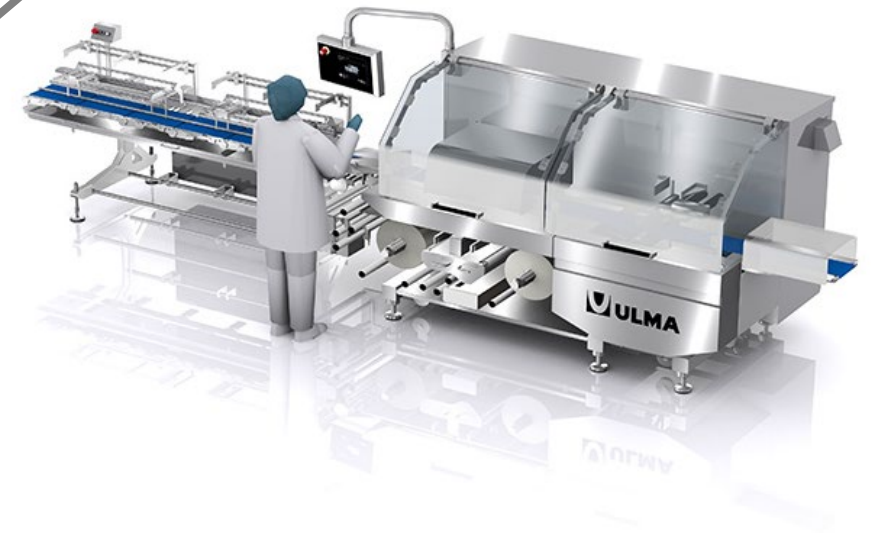
Low package reject rates.

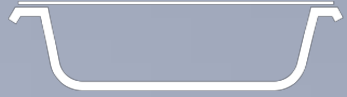


FM 405

High speed flow wrapper for MAP packing.

- MAP packing up to 250 ppm.
- Sturdy and reliable.
- Hygienic design and washdown conveyor.
- Feeding conveyor can be disassembled tool-less for cleaning.
- 'Easy-tape' based automatic reel change.





TRAYSEALING

#ULMA *weCare*

IFFA



TSB 300

New TSB 300 traysealer.

- Different packaging options: airpack, MAP, basic SKIN, SKIN protruding.
- Sealing area: 440 x 300 mm.
- Up to 14 cycles/min (CUT & SEAL), 10 cycles/min (MAP).
- Integrated vacuum pump.
- Washdown version with IP65 protection level.

#ULMAweCare benefits:

100% compostable pack.



TSA 1000 for LeafSkin™

New TSA 1000 traysealer with LeafSkin™ application.

- 100% recyclable flat cardboard tray.
- Attractive branding.
- Automatic product loading.
- Sealing area: 1000 x 330 mm.
- “Easy-open” and “recycling” corners.



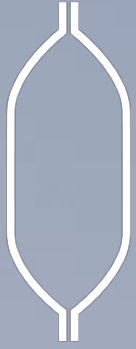
#ULMAweCare benefits:

100% recyclable cardboard.

Up to 80% plastic reduction.

Fully separable materials.





VERTICAL (VFFS)

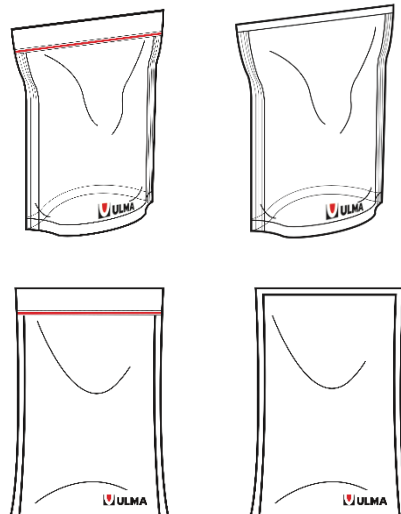
#ULMA *weCare*

IFFA

VTC 840 R

Rotated jaw system vertical wrapper.

- Bag with zipper.
- High speed: up to 80 ppm.
- Washdown frame.
- Universal cross sealing with easy and quick changeover.
- Automatic coder positioning.
- Automatic spot positioning system for film centering.



#ULMAweCare benefits:

100% recyclable mono-material film.



AUTOMATION of packaging lines

#ULMA *weCare*

IFFA

Traysealing complete line

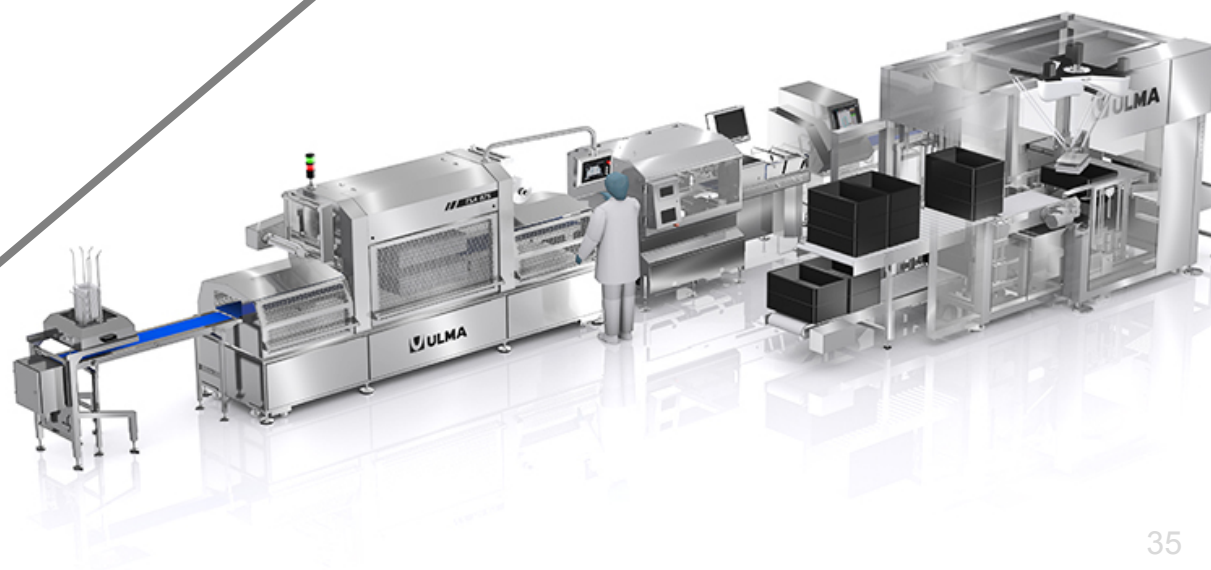
Complete line composed by a TSA 875 traysealer and a monoblock case packing cell.

- TSA 875 traysealer with automatic tray denesting system.
- High speed tray labeling machine from Marel.
- X-Ray and Seal Tester KXE 7510 from Anritsu.
- Monoblock cell for case packing of trays into rigid plastic crates.
- Crate de-stacking, case packing by 4 axis robot and crate stacking.
- Versatile solution for different mosaic configurations.

#ULMAweCare benefits:

100% recyclable mono PET trays.

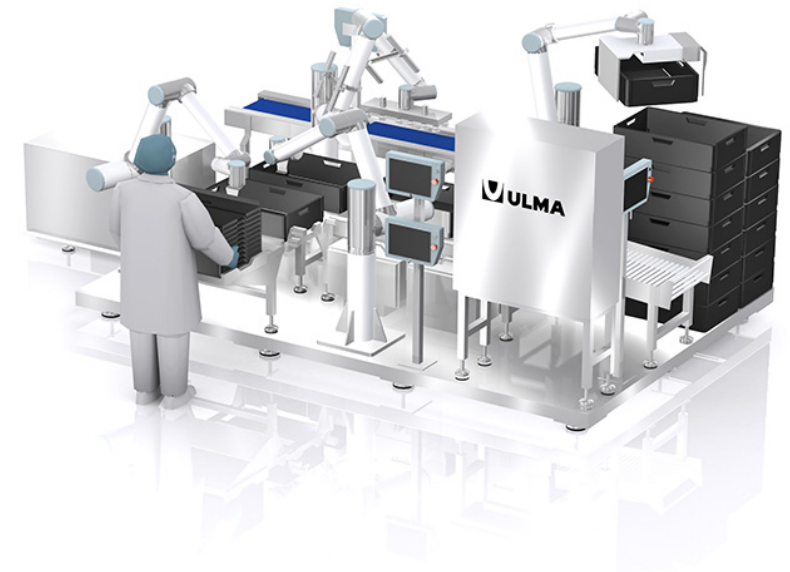
Super lightweight trays.



Collaborative robots cell

Automatic plastic crate erector, crate packing and palletizing.

- Monoblock cell. Flexible to move between production lines.
- Minimum footprint for end of line automation.
- 6-axis collaborative robots with different grippers to undertake different tasks.
- Versatile solution for different mosaic configuration.
- Dynamic detection of folded boxes level.
- No safety guarding needed.
- Full compliance with the norm EN ISO 10218-1, certified by TÜV NORD.





#ULMAweCare